

National Council on Family Relations

# report

Volume 32 Number 2

June, 1987

## Many factors affect families

by Roger H. Rubin, Ph. D.  
Member, NCFR Public  
Policy Committee

The quality of family life is affected by policies and programs formulated by government, the public and private sectors of the economy, and the legal, religious, education, and health institutions of society. For example, the Tax Reform Act of 1986 will affect personal exemptions, child care expenses, housing, education, health care, investments, and provide tax relief for the poorest families.

Much controversy exists over how public policies impact upon different family forms. The socially acceptable *prototype family*, against which other forms are often judged, is the traditional nuclear arrangement. However, the 1980 White House Conference on Families exposed the powerful political debate over definitions of the family and whether policies promote or discourage the formation of various family forms.

Policymakers often determine how the family is defined. Although marriage, biology, or adoption are usually used as the basis for defining the family, American communities usually regulate the composition of households. Such power most often impacts on those selecting non-traditional lifestyles.

For example, the purchasing or renting of property may be denied to cohabitators. Couples may be evicted upon discovery of their live-in relationship. Yet, the increase in non-marital heterosexual cohabitation over the past 20 years has been so great that in the future most Americans will probably experience a period of cohabitation.

Among the policy issues arising from cohabitation are property and inheritance rights, insurance benefits, bank account claims, the legal rights of children, custody and alimony decisions, and employment discrimination. Since no legal tradition exists between cohabiting couples, agreements must be entered into which begin to define the legal parameters of the relationship. Those living together may also be subjected to state sex laws, denial of credit and insurance, an inability to consent to medical treatment for the other, and no protection against legal testimony brought by the other.

Most states and the 1964 Civil Rights Act, Title VII, do not protect individuals from discrimination based upon marital status or living situations.

Obstacles exist even for the majority of singles who are not cohabitating. Betty Cogswell and Marvin Sussman studied bureaucratic responses to non-traditional family forms and found that social service agencies rely on a nuclear family model. For singles, this meant limits on legal assistance, housing and food.

For the gay and lesbian population, public policy has often been harsh. They are confronted with a level of societal hostility uncharacteristic of any other family form. Religious, legal, social, and economic forces have tended to suppress these interpersonal relationships. The most recent evidence of this was the 1986 United States Supreme Court decision upholding Georgia's anti-sodomy law. The court held that the constitutional right to privacy did not extend to homosexual activity.

Public policy has also focused on homosexual parenting. When their sexual orientation is known, approximately 15 percent of lesbian mothers retain custody of their children following a divorce. Gay fathers are less frequently assigned children. In addition, the inability of homosexual couples to marry denies social security and insurance benefits, inheritance rights, and major medical care for live-in lovers. Employment discrimination is not uncommon, and Title VII of the Civil Rights Act of 1964, forbidding discrimination by sex and race in the workplace, excludes sexual preference.

In some communities the barring of homeownership by individuals unrelated by blood or marriage has obvious consequences for homosexuals. The unacceptability of homosexuals in the military is a public policy with a clear bias. The growing public concern over Acquired Immune Deficiency Syndrome (AIDS) has focused policy issues on the contraction of the disease, health care and employment. Most victims reported thus far are gay males.

The single-parent family form has received considerable public attention. Ninety percent of such households are headed by females. Increases in out-of-wedlock births, divorces, and separation are the primary contributors to the dramatic rise in this social phenomenon since 1970. Today more than one-fourth of American families with children under age 18 are headed by a single-parent.

Financial problems are the major policy issue affecting single-parents.

Three million single mothers and their seven million children are poor. One reason is that divorced mothers experience a 43 percent drop in family income and a 53 percent drop occurs for separated women. Peter Stein has noted that the poorer wages of women, especially minority women, is another contributing factor. Thirty-five percent of single-mothers are minorities.

Edward Thompson and Patricia Gongla cite additional public policy explanations for the economic plight of single-parent mothers. These include child care costs, public assistance policies limiting eligibility, inadequacy of the child support system, employment discrimination against women, and the poorer benefits and greater unemployment of younger women. Thompson and Gongla believe the characterizing of single-parent families as deviant and incomplete has negative public policy implications. The lack of quality day care, housekeeping services, and financial discriminations such as the refusal to rent housing, credit problems, and loan and mortgage denials are examples. The insensitivity of health care, business, social service and educational institutions to the time and work logistics of being a single-parent further compound the situation.

### Double journals

Beginning June 1, all Student members of NCFR will begin receiving copies of BOTH NCFR journals--*Journal of Marriage and the Family* and *Family Relations*.

The NCFR Board of Directors approved reinstatement of dual journal receipt by students at its March, 1987, meeting.

Student members no longer will need to indicate their choice of one journal on their membership renewal forms.

Another change for students involves cost of Section memberships. Student members will pay \$3.00 per section per year while all other membership types will pay a \$5.00 fee. The ruling also was approved at the March, 1987, Board of Directors meeting.

Unwed teenage pregnancy has raised public concern. Non-marital  
See Policy on page 3

### David Olson elected new president-elect

Newly elected NCFR president-elect for 1988-1989 is David Olson of St. Paul, MN. Brent Miller is program vice president-elect, and Greer Litton Fox is secretary. Treasurer is Rebecca Smith, while Kay Young-McChesney is Student/Young Professional representative-elect.

Chair of the Nominating Committee is Sharon Price, and committee members elected are: William Doherty, Marilyn Ihinger-Tallman, Eleanor Macklin, and Alexis Walker.

At the Section level, new officers are:

Family Action: Charles Hennon, chair; Shirley Zimmerman, vice-chair; and Susan Coady, secretary/treasurer.

Research and Theory: David Klein, chair; Greer Litton Fox, vice-chair; Ronald Sabatelli, secretary/treasurer.

International: Dianne Kieren, chair; Karen Altergott, vice-chair; and Rosalie Norem, secretary/treasurer.

Ethnic Minorities: Harlan London, chair-elect; and Edith Lewis, secretary/treasurer.

A total of 1,201 ballots were returned in this year's election, compared with a return of 572 in 1986 and 815 in 1985.

Non-Profit Organization  
U.S. Postage  
PAID  
Cambridge, MN 55008  
Permit No. 30

NCFR  
1910 W. City Rd. B, Suite 147  
St. Paul, MN 55113

TIME DATED MATERIAL  
Please Deliver by June 30, 1987

# Board examines programs, budget



**Hamilton I. McCubbin**  
**NCFR President**

The Board of Directors has addressed some very important issues affecting the present and future of the National Council on Family Relations. In its two-and-a-half days of detailed discussions in Atlanta, Georgia, the Board decided to:

- (1) Phase out NCFR's Family Resources Database as a major activity of NCFR and to seek other agencies who may want to continue this activity as well as acquire it.
- (2) Provide additional support to student members of the National Council on Family Relations by restoring distribution of both journals without increasing the present \$40.00 Student Membership fee.
- (3) Examine alternative strategies for publishing and disseminating the work of its outstanding researchers, educators, and practitioners. The Publications Committee will be examining new alternatives that would enhance the revenue generating arm of NCFR as well as enhance NCFR's visibility.

While there are numerous motions and decisions made which will be shared with the National Council as a whole, these three reflect a major shift in the posture of the National Council on Family Relations and its decision-making. Specifically, the Board has been challenged to look more carefully at its budget and to make difficult decisions about its investments. It was very difficult for the Board to phase out an important National effort to

# REPORT

of  
The National  
Council on Family  
Relations

**Executive Director** Mary Jo Czapslewski  
**Editor** Kathy Collins Royce  
**Typesetting and** Sunshlne Graphics  
**Printing** Cambridge, MN

NCFR Report is published quarterly by the National Council on Family Relations, 1910 West County Road B., Suite 147, St. Paul, MN, 55113. Third-class postage permit.

Subscription rate is \$5, included in annual membership dues. \$8.00 per year postpaid individual rate.

**NEWS DEADLINES:** February 1 for March issue; May 1 for June issue; July 1 for August issue; November 1 for December issue.

share and disseminate information about family publications through its Family Resources Database. We have been privileged to have the leadership and unwavering commitment of Margaret Bodley, FRD director, and her team. Were it not for them, and particularly Margaret's commitment and efforts, FRD would not have been as successful as it was. Unfortunately, the revenues generated, while significant, were not sufficient and thus a decision was called for. We owe Margaret Bodley a round of applause for a job well done.

Membership remains a critical issue for the National organization. The Board has chosen to invest in future members and particularly those who are just being introduced to the field. This represents just the beginning of our National effort to improve upon recruiting new members and the retention of existing members. Dr. Sharon Houseknecht, membership chair, has taken this to be an important goal for her membership Committee.

In its deliberations, the Board discussed and recommended that the National Council on Family Relations Constitution be amended to make membership in NCFR a requirement for membership in the Association of Councils. As you will note, this brought strong reactions as well as

# NCFR members will vote on by-laws changes

NCFR members soon will receive ballots to vote on several constitutional by-laws changes. The proposed changes were approved at the March, 1987, Board of Directors meeting, and concern language changes for the Student/Young Professional representatives:

"That the Board of Directors recommend the following amendment to Article VIII, Section 4, of the NCFR Constitution (underscore indicates new language, overstrike indicates deleted language):

"Student Student/Young Professional  
representatives shall be elected at large  
by student members and young  
professionals. Each candidate must have  
been a student or individual member, as  
defined in Article III of the NCFR  
Constitution for a minimum of one year  
prior to being elected. ~~Each~~  
~~representative~~ The candidate receiving the  
highest number of votes shall serve a  
term of two years, the first as a junior  
(non-voting) non-voting  
("Representative-elect") member and the  
second as a senior (voting) voting  
("Representative") member.  
Representatives shall take office at the  
close of the annual meeting following  
their election. If for any reason an  
annual meeting is not held, they shall  
take office October 1. For the purpose  
of this section, "young professional"  
means a person who is not more than  
five years beyond the date of his or her  
most recent graduation from a degree  
program. The term does not imply a  
special membership category or special  
privileges except as specified in this  
section"

"That the Board of Directors recommend the following amendment to Article XIV, Section 1 of the NCFR

concerns from the State Councils asking for the Board's reconsideration of this motion. The Board of Directors has responded to this strong expression of concern and will be reviewing the entire situation before as well as during the forthcoming November annual conference of the National Council on Family Relations in Atlanta. To the members of the Association of Councils, you have been heard, and we look forward to discussing the matter further with you in November.

NCFR has many strengths, the most prominent of which is its Journals and related publications. Under the most able leadership of Dr. Charles Figley and the editors, Dr. Tim Brubaker and Dr. Alan Booth, we can expect that new ideas will emerge which not only showcase the quality of the work as well as the concerns of NCFR's membership, but we can expect new publications which will be placed for sale and for national distribution. This, the Publication Committee believes, is an important step forward to build upon the strengths that already exist.

In the months ahead we will be hoping to launch a new initiative in collaboration with the Consortium of Social Science Associations (COSSA). They have invited us to examine the possibility of co-sponsoring a

Congressional seminar with them. These seminars are intended to bring current family science research to the forefront, which could be useful for policy-makers, particularly around current legislative concerns. While the calendar for 1987 is full, we have been invited to participate in the planning for 1988. The Executive Director, Dr. Czaplewski, and the President-elect, Dr. Graham Spanier, will be working with the Executive Associate of COSSA, Susan Quarles, to work out details and plans.

It is exciting to work with the Board of Directors that has both the commitment and the dedication which are so important to the future of this organization. It is also reassuring to know that the Board is open to new ideas and suggestions and is willing to re-examine issues and decisions in light of new ideas and perspectives. With this in mind, we can anticipate that the Board will work closely with the Association of Councils and with the membership as a whole in creating a teamwork which is so necessary in shaping the future of our fine organization.

Hamilton I. McCubbin  
President.

# Rural families theme of conference

"Rural Families in the Midwest" is the theme for the seventh annual Working with Families Conference to be held November 3, 4, and 5, 1987, at KS State University. The conference will emphasize human service delivery strategies and assistance programs serving rural families, especially those impacted by the current economic instability in rural America. Over 50 professionals from throughout the U.S. will present workshops and presentations. The purpose of the conference is to provide professionals an opportunity to share and exchange programs, resource materials and experiences.

The Ruth Hoeftlin Forum on Family Issues is part of the conference. The 1987 Hoeftlin Scholar will be Dr. Jo Aldous from the University of Notre Dame where she is the William I. Kenan, Jr., Professor of Sociology. She is a family lecturer, researcher, and the immediate past president of the National Council on Family Relations. Dr. Aldous has published many articles in journals and several books including *Family Careers*, *The Politics and Programs of Family Policy* and *Dual Career Families and Beyond*. She is native of Manhattan, KS where both her parents were professors at KS State University.

For more information a registration material, write Cha Griffin or Steve Bollman, Farr Center, Justin Hall, KS St University, Manhattan, KS 66506 or toll free, in KS 800-432-8222 and ou state call 800-255-2757.

# Your ballots will arrive by Mail



## Letter to the editor

To The Editor, NCFR, Newsletter:

I am writing this letter to bring to the attention of the general membership an incredible (it really is very hard to understand) development.

In the last weeks, I have received a number of phone calls from shocked and angry Affiliated Councils' Presidents - shocked that there would be a unilateral board action to abolish state memberships in Affiliated Councils effective January 1, 1988. Angry that there was not 30 days' notice of such an item on the board agenda; and that this subject was not viewed as an area for participative discussion over a period of time.

About four years ago, I became Chairperson of a Development Committee for the Affiliated Councils. Our objectives were to develop a closer relationship with NCFR and its Board, and to also increase the effectiveness of the Affiliated Councils. Many of the recommendations were agreed to and passed. In my time on the Board as President-elect and President, I was very pleased that there was a real understanding of the state associations and increasing collaborative efforts.

The unique quality of NCFR, in my opinion, is its multidimensional aspect. Members represent different disciplines and perspectives. Members come from many states. Our strength has been a common commitment to family, with an underlying understanding that by talking together, we increase our recognition of different perspectives and have greater effectiveness. The key in family is to talk to each other. It is a surprise to hear that this event occurred which seems so contrary to NCFR purposes.

I hope the NCFR Board will reconsider its action to date and create a Task Force made up of NCFR and state association members to explore further the subject of state members who are not national members. Recommendations and next steps would evolve from that process.

I would be glad to help in whatever way is needed.

Matti Gershenfeld, Ed. D.  
Immediate Past President  
Association of State Councils

## Presenters

The AHEA program committee (Family Relations and Child Development Section) accepted a proposal from the NCFR office for a panel at the 1987 annual meeting (Monday, June 29, 3:15 p.m.).

The topic is "Family Life Education for the 21st Century: Content, Curriculum and Certification". The speakers are Margaret Arcus, Wesley Burr, Stephen Jorgensen and Joyce Portner.

## Donations

The following persons have contributed donations or gifts to NCFR from January 18, 1987, to May 1, 1987. NCFR thanks them for their generosity.

Katherine Allen, Lewisville, TX; Catherine Gilliss, San Francisco, CA; Brenda Johnson, Melrose Park, PA; Robert Keim, Dekalb, IL; Herbert Lingren, Lincoln, NE; and Joel Moss, Orem, UT.

## CFLE program deluged with applications

Over 175 applications for certification as a Family Life Educator have been received. Applications arrived from across the United States and Canada, from Puerto Rico and Australia. They were received from: clinicians in family agencies, mental health centers and private practice; college and university faculty, high school and elementary teachers; planned parenthood educators; ministers; and health personnel.

The Certification Review Committee will meet in mid-June to review these applications. The committee consists of Richard Hey, chair; Betty Barber, Marion Hill, Stephen Jorgensen, and Carol MacKinnon. Ex-officio members are Mary Jo Czaplewski, Hamilton McCubbin and Joyce Portner.

Two major factors are thought to account for this dramatic increase in

interest. The first is the Board's approval and adoption of the Experience Recognition Program proposal - a stream-lined certification application process for those with five or more years experience as a family life educator.

The second factor is the active promotion of the certification program by the NCFR over the last six months to appropriate professional groups. Groups informed of the certification program through brochure or newsletter include: NCFR active and suspended members; non-NCFR members of State Councils; family sections of AHEA; APA; APHA; ASA; ANA; NASW; AAMFT; Family Resource Coalition; ETR; Family Studies college and University departments; Family Service Association of America agencies; National Association for Parent

Involvement in Education; Ontario Family Life Educator's Association; Planned Parenthood; State Department of Education; Vocational Education; Parent Education Network.

Any suggestions for further professional groups to contact would be welcomed at the NCFR certification office. Contact Joyce Portner, NCFR Director of Family Life Education, 19 West County Road B, St. Paul, MN 55113.

## Policy from page 1

childbearing among adolescents carries with it greater risks of low birth weight associated with physical and mental handicaps, developmental deficits, increased school dropout rate, unemployment difficulties, related child care problems, and economic difficulties. For a nation historically more committed to preventing sexual activity than preventing pregnancy, American policy solutions for unwanted pregnancies remain highly debated.

A major policy response addressing the problems of single-parent families has been Aid to Families with Dependent Children (AFDC). The program, directed at poor, single-parent families, Benefit levels are determined by the states which provide poverty income except for Alaska.

Since 1984, Congress has required the states to begin attaching late child support payments. Title X of the Public Health Service Act of 1970, the Adolescent Health Services and Pregnancy Prevention Act of 1978 and Title XX of the Public Health Service Act of 1981 are examples of federal attempts at preventing unwanted pregnancies. Nutrition education programs, food supplements, and the 1987 Supreme Court decision upholding the concept of job protection for pregnant workers have implications improving conditions for single-parent families. Parent-education and father involvement, latch-key children, and job training are additional issues confronting policymakers. However, the United States lacks a coherent policy regarding children's allowances, day care facilities and parental leave when compared to other industrialized societies.

For those who remarry, a major issue will bring at least one child into the new marriage, creating a stepfamily. Little attention has been paid by policymakers to this growing family form. There is a need to clarify stepparent obligations regarding the support of stepchild. Kinship rights, such as grandparent visitations, illustrate the complex and challenging policy development where family relationships include a multi-generational mix of relatives from different marriages.

Traditional nuclear family forms, dual-earner families, widows, widowers, foster care and adoptive families, and families technologically created by methods such as surrogacy and conceptions, are among the many family forms affected by public policy. Recognizing this relationship should encourage creative solutions to difficult problems facing American families today.

## Football conference prompted NCFR's name

The NCFR was named the National Conference on Family Relations when it was founded in 1938. This paralleled the national football conferences in the eyes of Paul Sayre, professor of law at the University of Iowa, and one of NCFR's founders. Paul Sayre became NCFR's first president, and 43 others have followed him. You will have the opportunity to read about them in the historical publication of NCFR's first fifty years, being prepared by Ruth Jewson and James Walters.

Did you know that Margaret Mead was an early NCFR Advisory Council member? She was also slated to address an Annual Meeting, which was cancelled during the second World War, in cooperation with the Office of Civil Defense. How many Annual Meetings have you been able to attend? Have you noticed that the themes have been relevant to important issues of the times?

Can you name the past editors of the *Journal of Marriage and the*

*Family, Family Relations, Journal of Family History, and the Monograph Series?* Do you know that NCFR has a Family Resources Database and a Certification Program?

What has been NCFR's role in establishing Affiliated Councils, which early leaders envisioned would carry out the work of the organization between Annual Meetings?

Do you know why NCFR's Awards were established, and who has received them? What has NCFR done during its 50 years because of its concern for the well-being of families? What Position Papers have developed? What Sections have been established?

Based on NCFR's first fifty years, the challenge is for this interdisciplinary organization to position itself for a vital and committed role in the future. You may learn more about NCFR's history from this new and extensively illustrated booklet which will be available at the 1987 Annual Conference in Atlanta, GA. Ruth Jewson



## Stone Mountain

Stone Mountain near Atlanta, GA, is the largest exposed mass of granite in the world--more than five miles in circumference with 583 acres of exposed surface. It is estimated to be 285 to 294 million years old.

On the mountain is carved the world's largest relief sculpture depicting the mounted figures of from left, Confederacy President Jefferson Davis, and Confederate Generals Robert E. Lee (astride his horse, Traveller) and Thomas J. "Stonewall" Jackson. Photo by the Atlanta Convention and Visitors Bureau.

# Army funds study of family and work

The Army Research Institute for the Behavioral and Social Sciences has funded a major study of family wellness and its consequences for personnel retention and job performance. The study is designed to determine the extent to which family-related factors directly and indirectly impact upon work attitudes and behavior among members of the U.S. Army. This study will examine the consequences of family support programs for personnel and families and will look at the critical role of family wellness for individuals and for organizations that promote wellness.

The research contract was awarded to the Research Triangle Institute (RTI) of North Carolina, with major sub-contracts for research to be conducted by Caliber Associates and the Human Resources Research Organization of Washington, D.C., and the University of Georgia. NCFR member Dennis Orthner, director of the Center for Work and Family Issues at the University of Georgia, is chief scientist for the project. The project director is Al Cruse at RTI, and the associate project director is Jerry Croan of Caliber Associates. Other project scientists who are NCFR members include Janet Griffith at RTI, Barbara Janofsky at Caliber Associates, Cathy Stawarski at HumRRO, and Gary Bowen at the University of North Carolina. The initial funding for the project is approximately \$10 million dollars, but it may expand as additional tasks are required.

The project is built around the development and testing of a comprehensive conceptual model of family wellness and personnel retention and performance. The conceptual model is being built to include spouses and children as well as active duty personnel. It incorporates a variety of factors that impact upon the attitudes of family members toward their relationships with each other as well as to the work environment. Other factors that might also impact upon job performance are also being included in the study in order to determine the relative contribution of family factors on the husband/wife and parent/child relationships, but other social networks will also be examined.

There are four major tasks incorporated into the project. The first is to determine the factors that contribute to family wellness in the organizational environment of the Army. The second task involves examining the family and other variables that contribute to personnel retention decisions. The third task examines the variables that contribute to personnel performance and organizational unit productivity and readiness. The fourth task examines factors that impact upon spouse employment and the consequences of spouse employment for family wellness and for military personnel work attitudes and behavior.

The project will involve a variety of research strategies. First year efforts center around secondary analyses of

existing data sets, both military and nonmilitary. These are being used to test elements of the conceptual model and to provide early research results that can have an impact on program managers and policy makers, including military and Congressional leadership.

A longitudinal study of approximately 20,000 single and married personnel and their spouses is to begin in the second year with both husbands and wives included in the samples. Single individuals are to be studied in anticipation of marital decisions and the effect of their interpersonal relationships on work-related variables.

Between the survey waves,

intensive interviews will be conducted with sub-samples from the larger survey to examine family decision-making processes and to better understand the interpersonal relationship factors that impact upon job performance. Field experiments of model programs will be implemented and evaluated, as well, during the course of the study.

NCFR members will be kept informed about the progress of the study. If further information is needed, contact Dennis Orthner, Director, Center for Work and Family Issues, University of Georgia, 317 Dawson Hall, Athens, GA 30602.

## Calls for papers

Due May 15, 1988

The **Journal of Marriage And Family Review** announces a special issue on the topic "Corporations, Businesses and Families" to be edited by Marvin B. Sussman, editor-in chief of the journal, and Roma S. Hanks. Please forward submissions to Roma Hanks, Department of Individual and Family Studies, University of DE, Newark, DE 19716, by May 15, 1988.

The editors seek contributions that offer critical review of research and theoretical development in areas of interaction between families and corporations or other bureaucratic organizations. Areas of interest include the impact of labor market conditions on corporate policies that affect families and family initiation of change within the work place. A section of the issue will be devoted to family interaction in smaller organizations, particularly in family-owned businesses. A brief outline of topics follows:

I. Corporations and Families - Appropriate submissions could include a family perspective on employee assistance programs, retirement planning programs, corporate policies on family care, work schedules and emerging flexible benefits packages. Job requirements for corporate employees, such as business travel and frequent geographic relocation, are appropriate subjects for articles exploring corporate and individual initiative in work and family life. Historical, economic and sociological analyses of such changes in the work place as plant closings, plant relocations and job loss or retirement of middle management would enrich the issue. An ethical perspective on families and corporations could focus on issues such as nepotism, the reciprocal role of consumerism in shaping family life and corporate policy, worker equity over the life span or conflicts in values of the family and the corporation.

II. Businesses and Families - This section, primarily concerned with family businesses (farms, cottage industries, family-owned corporations, etc.) will contain articles that deal with the ways in which families meet the normative demands of business practice and filial responsibility. Of specific interest are reviews of research on women in family businesses, siblings as partners, and intergenerational relationships in minority family businesses. An article

could examine TV evangelism or the physician's office as a family business.

III. Occupations within Bureaucracies - This section explores the similarities and differences in the interaction of families with corporations and with bureaucratic organizations such as churches, universities, and the military. Comparative analyses of policy and programs are appropriate as are theoretical pieces on modern organizations.

Due July 15, 1987

The March, 1988, issue of the **Journal of Family Issues**, will be devoted to "Gender Stratification, Economics, and the Family."

Theoretical essays and reports of quantitative and qualitative research are invited. Four copies of each submitted paper should be sent to Professor Rae Lesser Blumberg, Issue editor, Department of Sociology, University of California, San Diego, La Jolla, CA 92023.

Submission deadline is July 15, 1987, unless other arrangements are made with the issue editor.

Due Sept. 1, 1987

Members of the International Union for the Scientific Study of Population and other scientists are encouraged to send two-page abstract proposals of papers for the Discussion Sessions of the Conference on Women's Position and Demographic Change in the Course of Development to be held in Oslo, Norway, June 15 through 18, 1988.

The deadline is September 1, 1987.

For more information contact B. Remiche, Secretary of the Organizing Committee, IUSSP, Rue des Augustins, 34, 4000 Liege, Belgium.

## INTRODUCING. . .

A Framework  
for Life Span  
Family Life  
Education!

### A COLORFUL WALL POSTER

defines family life education by specifying major content and learning concepts for family life education programs over the life span.

ALLOWS YOU TO SEE IN ONE  
BROAD SWEEP THE ENTIRE  
SCOPE OF FAMILY LIFE  
EDUCATION.

Order your poster today!  
Quantities are limited!



National Council on Family Relations  
1910 W County Road B  
St. Paul, MN 55113  
612-633-6933

Please send me the 24" x 36" Wall Poster of  
FAMILY LIFE EDUCATION FRAMEWORK

# \_\_\_\_\_ copies at \$4.95@ total \$ \_\_\_\_\_

\$1.50 postage and handling per poster total \$ \_\_\_\_\_

Total enclosed \$ \_\_\_\_\_

PREPAID orders only. Allow 30 days for delivery.

Name \_\_\_\_\_

Address \_\_\_\_\_

City \_\_\_\_\_ State/Zip \_\_\_\_\_

ALL PAYMENTS MUST BE IN U.S. FUNDS DRAWN ON A  
U.S. BANK.

NCFR  
Office

612-633-6933



# Organizing for family action



**Mary Jo Czaplewski**  
Executive Director

The climate of the 100th Congress of the United States raises vital interest in family policy issues as debate and collaborative efforts are made among law makers of both congressional houses on issues such as health care, welfare reform, parental laws, child care, AIDS, teenage pregnancy and the burgeoning feminization of poverty.

NCFR has also geared up for a more aggressive approach to family action.

## Sage offers books by members

Several NCFR members have books available through Sage Publications in Newbury Park, CA.

Richard J. Gelles is series editor of Family Studies Text Series, with Alexa A. Albert as series association editor. Both are at the University of RI.

Two new books in the series include **Remarriage** by Marilyn Ihinger-Tallman of WA State University, and Kay Pasley of the University of KY. This first textbook on the process and problems of remarriage provides a brief and clear synthesis of current knowledge about the "incomplete institution." The book includes discussion questions at the end of each chapter.

**Work and Family Life** by Patricia Voydanoff of the University of Dayton is another new book in the series. It provides a synthesis of current knowledge on work and family life, including topics such as marital satisfaction, family power, impact of playing multiple roles and family coping efforts.

Other books in the series are **Paths to Marriage** by Bernard I. Murstein of Connecticut College, **Family Research Methods** by Brent C. Miller, UT State University, **Becoming a Parent** by Ralph LaRossa, GA State University, **Intimate Violence in Families** (fifth printing) by Richard J. Gelles and Claire Pedrick Cornell, both of the University of RI, and **Later Life Families** (second printing) by Timothy H. Brubaker, Miami University.

The series was designed to examine topics relevant to a broad view of family studies.

For information on ordering the series titles, contact Sage Publications, P.O. Box 5084, Newbury Park, CA 91359; 805-499-0721.

Under Carla Howery's leadership, the **Public Policy subcommittee** has reorganized and has requested the NCFR Board of Directors to grant it full standing committee status. Members of the committee include Harold Feldman, co-chair and secretary; Hal Wallach, House Committee on Aging; Penny Maza (CWLA); Linda Rothleder, DOD Family Policy Officer; Margaret Feldman, Roger Rubin and Elaine Anderson, University of MD. Since January this committee has met monthly and drafted a family policy statement for NCFR, its own mission statement, and a set of goals and objectives for 1988. These will be presented to the Board in November along with a slate of the major NCFR focus areas for the 101st Congress. In addition, this committee is actively participating in activities of the Coalition of Family Organizations (COFO), the Generations United Coalition and the Child Care Alliance. These groups, representing prominent child and family-focused organizations, are working to keep child and family issues at the forefront in Washington.

The **Generations United Coalition** was initiated in 1986 through joint efforts of the Child Welfare League of America and the National Council on Aging. Over 100 other organizations, including NCFR, are members of this coalition. Its primary purpose is to unite at national, state and local levels on key public policy issues that address human needs across all generations; to raise public awareness of common issues faced by every

generation; to produce and disseminate programmatic information and materials that demonstrate the value of intergenerational cooperation; and to promote activities which unite generations for service to the community and to one another.

The Coalition meets regularly, and its work is divided into four major committees. NCFR's representatives on these committees are: Hal Wallach on the Public Policy Committee; Carla Howery and Margaret Feldman on Public Education; Ouida Westney on Program Development; and Matti Gershenfeld on the State and Local Support Committee.

The **Coalition of Family Organizations (COFO)** has been revitalized. NCFR joins AAMFT, AHEA, and FSA in representing over 41,000 family professionals nationwide in producing the quarterly COFO Memo. This year's COFO Memo is being sent to all congressional offices. Carla Howery has represented NCFR in monthly meetings of the coalition to discuss developments in legislative issues and the most effective ways of implementing COFO's mutual interests. This year again, NCFR is able to monitor national legislation through its COFO-shared subscription to **LEGISLATE - online**. A grant proposal to fund monthly breakfast seminars to educate congressional staff on the family implications of current bills and federal actions is near completion.

With these and other developments, NCFR has a unique opportunity to participate in the changing Washington

political climate. It is a professional responsibility to promote family well-being in the public policy arena. The efforts of NCFR and the Public Policy Committee are helping to strengthen lawmakers' perceptions of NCFR's commitment.

## NASW sets 1987 meeting

"On the Leading Edge--Social Work '87," NASW's meeting of the profession, is set for September 9 through 12 in New Orleans. Four "specialty conferences" are offered in one: Occupational Social Work Conference; Health and Mental Health Conference; Families, Children, Youth and Aging Conference; and Management Conference.

Speakers scheduled include Edwin Newman, former NBC correspondent and author; Carol H. Meyer, Ph.D., author and professor at Columbia University; Michael Harrington, author of **The Other American and The Next Left**; and Signey Barthelme, MSW, mayor of New Orleans.

For more information contact NASW 1987 Annual Conference, 7981 Eastern Ave., Silver Spring, MD, 20910; 301-565-0333 or 800-638-8799.

## Workshops

July 10, 1987

"The Price of Parenting: Divorce Ups the Ante," a workshop sponsored by the MN Institute of Legal Education, will present issues on child custody and child support, including joint custody and needs of children. The meeting will be held at the Holiday Inn International in Bloomington, MN. Contact: MILE, 29 S. Fifth St., Minneapolis, MN 55402; 612-339-6453.

July 15, 1987

"Family Law 1987" is designed for the experienced and beginning family lawyer and will include information on spousal maintenance, tax planning, pending legislation and dissolution hearings. Sponsored by the MN Institute of Legal Education, the meeting will be held at the Hotel Sofitel in Minneapolis. For more information contact MILE, 29 S Fifth St., Minneapolis, MN 55402; 612-339-6453.

July 27-29, 1987

"Counseling Women in Treatment and Recovery," will be held at Hazelden Center in Center City, MN. Among the issues to be discussed are multiple roles, P.M.S., depression and stress and their influence in women's treatment and recovery from chemical dependency. For more information contact Hazelden, Box 11, Center City, MN 55012; 800-822-0080 (in MN, 612-257-4010).

**NCFR INTRODUCES NEW EXPERIENCE RECOGNITION PROGRAM TO CERTIFY EXPERIENCED FAMILY LIFE EDUCATORS.**

# Wanted

**FAMILY LIFE EDUCATORS WITH 5 YEARS OR MORE EXPERIENCE.**

Let your family life educator experience work for you. **TAKE ADVANTAGE OF THIS SPECIAL LIMITED TIME OFFER.** You can become certified, based upon your experience, through NCFR's **EXPERIENCE RECOGNITION PROGRAM.**

**Certification is important to you. Benefits include:**

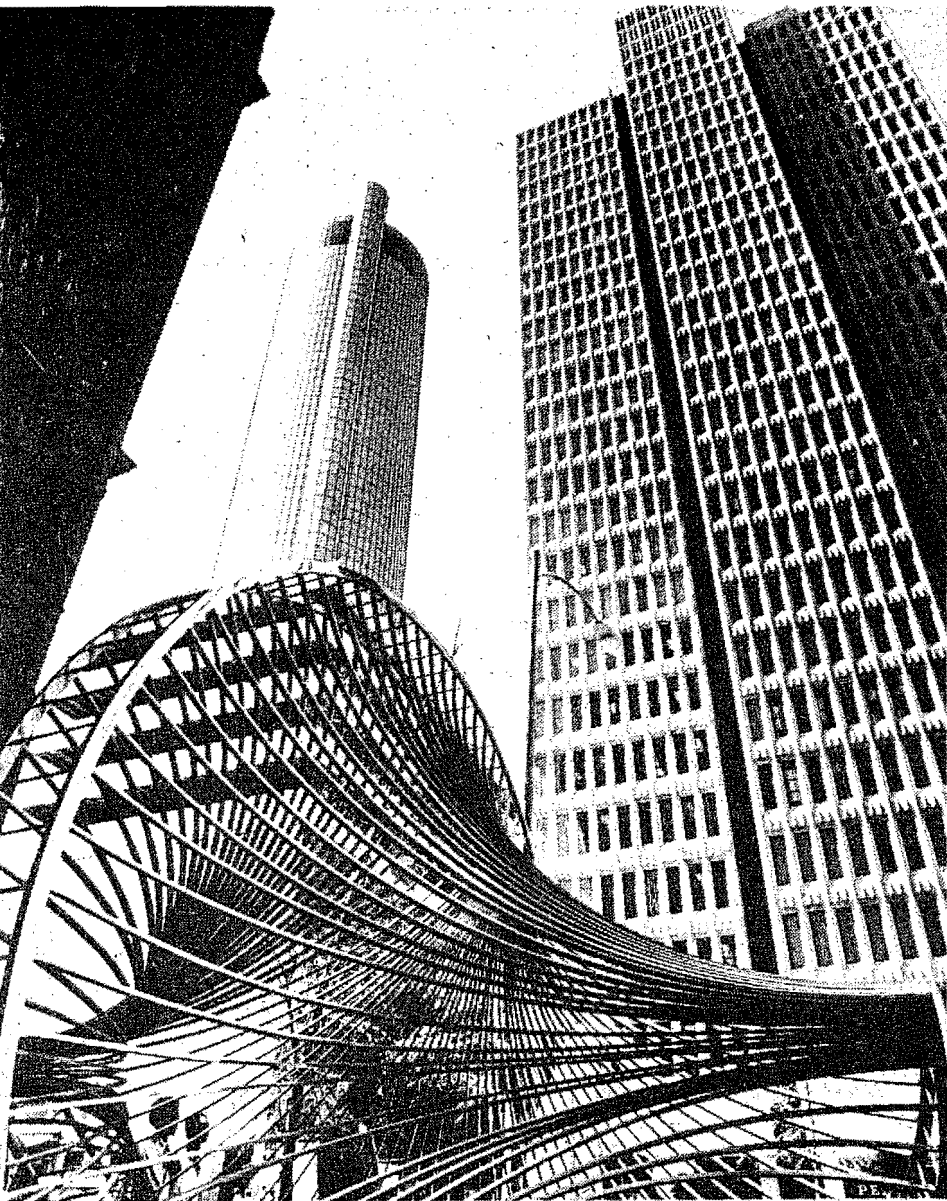
- Validating your experience as a professional family life educator.
- Documenting your competence to employers.
- Offering you career opportunities.
- Providing you with a framework for keeping updated.

**HURRY! COMPLETE YOUR APPLICATION MATERIALS BETWEEN NOW AND MAY 1, 1987. PAY ONLY \$100.** That's a \$50 SAVINGS off the Standard application fee.

**DO IT NOW!** Send \$3.50 for application materials packet to National Council On Family Relations or call 612-633-6933. We'll send them to you immediately.

SEND FOR YOUR APPLICATION MATERIALS, TODAY, TO National Council On Family Relations Certification Division 1910 West Co. Rd. B, Suite 147 St. Paul, MN 55113 612-633-6933





## Peachtree Center

Atlanta's Peachtree Center is an ever-expanding complex of office buildings, hotels, and retail, entertainment and dining establishments located in the heart of the city. It features a variety of artistic works including, "Early Mace," a one-ton stainless steel sculpture by Charles O. Perry.

Behind the sculpture rises the tallest hotel in the world--the 73-story, 723-foot Peachtree Plaza Hotel, site of NCFR's 1987 annual convention. Photo by the Atlanta Convention and Visitors Bureau.

### Authors! Sell Your Books!!

The NCFR Headquarters Office is coordinating the Exhibits for the 1987 Conference. A frequent comment heard by members attending the conference is, "I wonder why my publisher hasn't exhibited my book at this conference?" Here's where you - members and authors - can be key public relations channels! Publishers frequently tell us that they depend on clues from authors as to where their books should be exhibited. If you are a member who has published a book recently, **LET YOUR PUBLISHER KNOW THAT YOU WOULD LIKE TO**

**HAVE IT EXHIBITED AT THE 1987 CONFERENCE IN ATLANTA.** Then please tell us the name of a direct contact in your publishing firm (this is vital)! We will then personally let your publisher know that your books should be exhibited.

Take a few minutes today to fill out the form below and return to **Cindy Winter**, Conference Coordinator. Remember that personal contact is the most effective marketing tool available! Let's have your books in the 1987 Exhibit.

Return to: Cindy Winter, NCFR Conference Coordinator, 1910 West County Road B, Suite 147, St. Paul, MN 55113 (Phone 612-633-6933)

Please contact my publisher about exhibiting my book(s) in the 1987 Annual Conference:

Your Name \_\_\_\_\_

Title(s) of your book(s) published \_\_\_\_\_

Individual to contact at your publisher \_\_\_\_\_

Publisher \_\_\_\_\_

Publisher's Address \_\_\_\_\_

Publisher's phone number (\_\_\_\_) \_\_\_\_\_

## Association of Councils responds to board action

The Association of Councils is embarrassed! We, as local, state, and regional affiliates have not **done our part** to encourage our members to become NCFR members. We, as affiliates, have, by our inattention to the importance of NCFR membership, contributed to NCFR's current dilemma--a decline in membership and a decline in revenue.

Of course, we know that as we, the affiliates, get more NCFR members, we receive a larger rebate from NCFR. The current rebate is \$7.00 for each regular member and \$2.00 for each student or associate membership. I am embarrassed that the lack of new NCFR members coming through our affiliates would cause any NCFR Board of Directors member to suggest that all affiliate members **must** be NCFR members by January 1, 1988.

Such a motion was made at the March NCFR Board of Directors' meeting and to my astonishment--it passed. So, unless we, as affiliates, want to abide by this Board action, which necessitates a membership vote for implementation, we need to call for a rescinding of this motion.

I am not opposed to every affiliate member choosing to become a member of NCFR. I am opposed to the requirement to be an NCFR member.

Besides being embarrassed, I am also upset. I appealed to the Board to give this motion time and not to rush into action. Although I could not stop the vote, I am greatly concerned about the immediacy of the action. At the same time that the Board voted to require NCFR membership, the NCFR membership committee and the President of the Association of Councils had begun an all-out effort through means of a videotape to encourage NCFR membership. Also, the Association of Councils had encouraged affiliates to become part of our "Adopt-a-Neighbor" program where a "stronger" council encourages a "weaker" council through some joint participation. The outgrowth of the "Adopt-a-Neighbor" effort was to gain membership for NCFR and strengthen our affiliates.

Another issue that upsets me is that the President's Fund, which Matti Gershenfeld so ably used to assist some "almost" non-existent affiliates to come back to life, has not been seen by the NCFR Board as an expanding recruitment tool. The affiliates are far more important to the growth of NCFR than the recent Board action indicates.

I am not the only one who is upset about the new requirement for NCFR membership. I have heard from several affiliates in an official way. (I encourage anyone to write me at 4055 Glenavon Court, Ft. Worth, TX 76109). Some of the comments that have come to me include:

From both candidates Susan Meyers and Ethel Pickett (for President-elect of the 1987-88 Association of Councils):

"...The Association of Councils (formerly the Congress of Affiliated Councils) has adamantly opposed any suggestion that all affiliated council members **must** be (or are required to be) members of the NCFR. We have felt that affiliated membership allows

professionals in related organizations to become familiar with the activities of the NCFR, and to decide on the value of the NCFR to them. A portion of these members also become NCFR members. Since that has been the will of the affiliated councils for many years, we see no reason to change it. We want you to know that both of us (Ethel and Sue) will fight for the right of membership at the state, local, regional and provincial levels.

"Evidently the questions raised indicate lack of understanding of how the affiliated councils function and the role of the non-NCFR members in the councils. It is possible that some Board members (and perhaps some other NCFR members) think that all council members are rebated the money from NCFR memberships. In fact, only the NCFR members have a portion of their dues rebated to the affiliated councils. Some have expressed concern that the non-NCFR members of affiliated councils are "serviced" by NCFR with no payment into the organization. In fact, the NCFR provides services to the councils as a council (handbook, Feedback, administration of IRS status, etc.), which would be present whether or not there were non-NCFR members in the affiliated councils.

"Assuming that all council members would immediately join the NCFR is naive. If the requirement were enacted, the councils would probably lose many of their local members. Not only might energy be lost to the individual councils, but so might the membership connections providing liaisons to and from other human service organizations. These, by the way, provide some of the best potential for NCFR membership. With increased emphasis on early childhood and parent education, the potential for growth in the affiliated councils **and** the NCFR is great.

"Let us hope that the NCFR will not be 'penny-wise and pound-foolish.'"

From Connie Steele, president, TX Council on Family Relations:

"...In addition to those persons interested in NCFR as well as TCFR, we have individuals and agencies whose sole interest in joining TCFR is their interest in gaining skills in working with other families or within their own family context. These members are not wanting to subscribe to the family journals or other output from the national organization, but they are wanting to join a strong voice--TCFR--that supports families throughout the state of Texas. We need them in our organization! To require them to join NCFR when they have other foci will mean that they probably will not do so, and, therefore, the state organization will be weakened and less effective.

"We urge you to join TCFR's voice in opposing NCFR's move to require all state affiliate members to have NCFR membership. If NCFR finally approves this move, I have grave concerns not only about the persons who may not be

See Affiliates on page 7

# Affiliates from page 6

members of the state affiliate but also about how staunch, enthusiastic current members of both NCFR and TCFR will feel about such an obligatory and authoritative ruling-especially at a time when TCFR's memberships have substantially increased!"

At the TCFR (Texas) annual business meeting, the following resolution was adopted:

## Resolution Opposing Required NCFR Membership for TCFR Members

Whereas the Texas Council on Family Relations is a non-profit, educational and resource organization devoted to promoting healthy families;

Whereas TCFR provides a forum for the exchange of ideas, information and concerns on family issues;

Whereas TCFR provides a network for consultation and cooperation among organizations and individuals working with Texas families;

Whereas TCFR encourages and assists in the development of legislation and services for Texas families;

Whereas membership in TCFR provides an opportunity for members to present their own research and thoughts to colleagues by participating in TCFR conference programs;

Whereas membership is open to anyone affiliated with the National Council on Family Relations or to any one interested in gaining professional leadership skills in working with families, or to any one concerned about the well-being of Texas families;

Be it therefore resolved that the Texas Council on Family Relations (TCFR) go on record as opposing the National Council on Family Relations' move to require all state affiliate (TCFR) members to have membership in NCFR.

Be it also resolved that President Connie Steele so inform the Association of Council's President, Britton Wood; National President Hamilton McCubbin and the Board of NCFR; the National Membership Chairman, Sharon Houseknecht and Mary Jo Czaplewski, NCFR Executive Director, that TCFR desires to go on record as opposing required membership in NCFR as a prerequisite for membership in a state affiliate, said Texas Council on Family Relations.

Be it also resolved that President Steele's letter of proposed action to the NCFR officials be written within ten days of the final session of the 1987 Texas Council on Family Relations' annual meeting, or by 3:00 p.m., April 13, 1987.

Respectfully submitted

Dorothy Taylor

1987-1988 Membership Vice-President

Adopted by unanimous consent of the voting body of Texas Council on Family Relations, April 3, 1987, San Antonio, Texas

From the North Carolina Family Life Council, Inc., I received a letter from the new president, George Shackelford, who said,

"I am writing you as our N.C. Board

of Directors expressed great concern when informed of the proposed membership change.

"We are certainly desirous of promoting the National Council. We should not, however, require membership in the National in order to be a member of the State Council. We have many members that are interested in family life and all its components, but it is not their full time work. This would indeed be a burden on these people. Our N.C. Council would suffer tremendously. I'm not sure our organization could continue to operate under these conditions.

"The Board has directed me as its President to pass on our grave concerns. We urge you not to take such action."

William H. Reid, president of the Alabama Council on Family Relations, has written to protest the NCFR Board of Directors' action to require NCFR membership. He states,

"...You know of many of the struggles in keeping a state chapter active. Often our most dedicated workers have paid state dues only. Many would refuse to pay the high national dues and receive journals they can neither understand nor use.

"In Alabama, 44 percent of our members have paid state dues only. Implementing the new policy would cut our membership in half. It would also have a disheartening effect on state officers. We need the national's support, not have it weaken our efforts. Please reverse this decision."

So what does all of this feedback tell us? I cannot speak for you, but what these protests tell me is that:

(1) NCFR appears to be inconsiderate of its affiliates and the concerns of the affiliates. Some of our affiliates are doing outstanding work with many creative, practical ideas and programs.

(2) The NCFR Board of Directors needs to set up a dialogue with the presidents of the affiliates and receive "first hand" feedback on issues that pertain directly to the affiliates. A time can be allotted at the presidents' workshop this November to accommodate this idea.

(3) NCFR may be declining in membership and subscriptions to the journals because inadequate feedback has eroded the "usefulness" of NCFR's

services to many affiliate-only members.

(4) NCFR may not have adequately "marketed" its services to affiliate members to encourage NCFR participation. When we want new memberships in any organization, we usually go to our friends first. The Association of Councils wants to be considered friends and colleagues of members of NCFR.

(5) The NCFR Board of Directors needs to postpone a vote of the membership on the NCFR requirement until after the November annual conference. Why do we implement such action so abruptly to our friends?

(6) If the NCFR Board of Directors uses wise judgement in this matter, NCFR will be the better for it. I regret this conflict, but I do like the fact that much energy has been expended by affiliate members that indicates a healthy life among our affiliates. If the affiliates were "asleep" (which I do not think is

See Affiliates  
on page 8

F.E.I. No. 41-076-2436

## National Council on Family Relations

1910 West County Road B, Suite 147, St. Paul, Minnesota 55113

Phone: 612-633-6933

## NCFR Membership Application

Name \_\_\_\_\_  
Address (business \_\_\_\_\_ home \_\_\_\_\_) \_\_\_\_\_  
City \_\_\_\_\_ State \_\_\_\_\_ Province/Country \_\_\_\_\_ Zip \_\_\_\_\_  
Telephone (business \_\_\_\_\_ home \_\_\_\_\_) \_\_\_\_\_

### MEMBERSHIP TYPE:

- Receive both journals

	U.S. Per Year	British Columbia, Canada	Foreign & Other Canada	
Individual	\$ 70	\$ 79	\$ 72	\$ _____
2nd Family Member	\$ 40	\$ 42	\$ 42	\$ _____
Student	\$ 40	\$ 49	\$ 47	\$ _____
Organization	\$100	\$109	\$109	\$ _____

If you are retired or employed part-time, choose one of the membership types below:

- Receive choice of one journal. Journal choice: \_\_\_\_\_ JMF \_\_\_\_\_ FR

Associate:

Retired	\$ 40	\$ 49	\$ 47	\$ _____
Part-time Employed	\$ 40	\$ 49	\$ 47	\$ _____

Second journal (at reduced cost of \$27.00): \_\_\_\_\_ JMF; \_\_\_\_\_ FR \$ \_\_\_\_\_

Residents of Virginia, Maryland and DC may choose to have their affiliated council dues go to:

(check one): DC \_\_\_\_\_ Maryland \_\_\_\_\_ Virginia \_\_\_\_\_

### SECTIONS: (\$3.00 per section for student members; \$5.00 per section for all other membership types)

_____ Family Therapy	_____ Family Action	_____ Ethnic Minorities	_____ Family Discipline
_____ Education & _____ Enrichment	_____ Research & Theory	_____ Family & Health	_____ Feminism & _____ Family Studies
_____ International	_____ Religion & Family Life		
	Total for Sections		\$ _____

COFO Memo option (\$5.00 per year) \_\_\_\_\_ \$ \_\_\_\_\_

All payments must be made in U.S. funds drawn on a U.S. bank.

Contributions are tax deductible, as allowed by law.

Enclosed is my voluntary gift: \$200 \_\_\_\_\_ \$100 \_\_\_\_\_ \$50 \_\_\_\_\_ \$25 \_\_\_\_\_ Other \$ \_\_\_\_\_ \$ \_\_\_\_\_

Apply my gift to \_\_\_\_\_ fund or general fund \_\_\_\_\_

name of special fund \_\_\_\_\_

Payment by: Check \_\_\_\_\_ Visa \_\_\_\_\_ Master Card \_\_\_\_\_

Visa/Master Card Account Number \_\_\_\_\_ Expiration Date \_\_\_\_\_

I agree to pay an additional 7% service charge.

Signature \_\_\_\_\_  
(required for credit cards only)

Please send information about: \_\_\_\_\_ Standards and Criteria for Certification of Family Life Educators  
\_\_\_\_\_ Human Resource Bank





# Affiliated Councils activities

## California

The California Council on Family Relations held its annual conference on "The Intergenerational Family," at Chapman College in Orange.

Keynoting the Friday night session was Warren Farrell, Ph.D., author of *The Liberated Man*. His address, "Why Men Are the Way They Are," invited those present to "walk a mile in the moccasins of the other sex."

Saturday morning workshops included those on family mediation, meeting the challenges of the frail elderly, teenage issues, the adoptive family, fatherhood, parenting programs for pregnant minors, and stepparenting.

Afternoon sessions included an address, "The Family, The Future, and Aging," by Vern L. Bengtson, director of the Andrus Center Gerontology Research Institute.

## Florida

New President of the FCFR is Ken Ackerman, Marital and Family Therapy Center, 107 Sandels Bldg., FL State University, Tallahassee, FL 32306.

## Idaho-Montana

Dr. Dick Stellway is the new newsletter editor of the IMCFR. He is seeking member input for the newsletter to be published in June. Send him results of research applicable to members and their clients, book reviews, meeting announcements, job opportunities, new teaching ideas, or new programs. His

address is Sociology Dept., NW Nazarene College, Nampa, ID 83651.

## Illinois

President of the Illinois Council on Family Relations is Marcia Nelson, R #1 N 71, Ottawa, IL 61350; telephone 815-433-1323.

Laurent Gosselin is president-elect, with Jill Finn as secretary, Carol Armstrong as treasurer and Clareta Walker, membership chair.

## Michigan

"Exploring Family Strengths" was the theme of the recent annual conference of the Michigan Council on Family Relations.

Sessions included an address by Dr. Nancy Humphreys, "Exploring Family Strengths: Issues and Attitudes in Policy and Practice;" a panel discussion on "The Search for Competence: Focusing on Strengths in Family Systems;" and round tables on single parenting, the SKIP program, the family beyond divorce, strengths in families with newborn children, parenting skills, teenage pregnancy, caring for older family members, working with families of alcoholics, family problem solving effectiveness, strengths in the ethnic family, fatherhood, influencing family legislation in a positive way, and corporate child care.

The Michigan Council has 257 paid members. Of these, 160 are regular members, 5 are member couples, 5 are organizations, 69 are associate members, and 13 are life members.

Of the 30 Board members, 24 belong to NCFR, and 6 to the Michigan Council only. Of the officers, 6 belong to NCFR and one to Michigan only.

## New York

"Challenging the Barriers: Managing Family Life in a Changing World," is the theme of the 1987 annual conference of the New York Council on Family Relations. The meeting will be held October 22 and 23 in Rochester.

The conference has a two-fold focus: analysis of where families are and what they need in order to fulfill their social and personal roles at this time; and analysis of the social, political, and economic factors that inhibit and those that assist them in doing so.

## North Carolina

Recipient of the 1986 North Carolina Family Life Council's Distinguished Service Award is Dr. Miriam B. Moore, Greenville, NC.

Dr. Moore was honored during the annual awards luncheon at the Council's 39th annual conference, "Strengthening Families: What Works."

Dr. Moore came to North Carolina in 1962 as professor and department chair of East Carolina University (ECU). She was named the first Dean of the School of Home Economics at ECU when it was established in 1968. She received the B.S. and M.Ed. degrees from the University of GA and the Ph.D. degree from OH State University.

Before joining the ECU faculty, she chaired Home Economics at Berry College, GA. She also had several years of college and high school teaching in Braxton, Hahira, and Statesboro, GA.

Dr. Moore helped to formulate family policies while serving on the Governor's Task Force which developed North Carolina's report to the White House Conference on Families, while serving as an advisor to the American Home Economic Association's Center for the Family and as a participant in AHEA Workshops for low-income families. In 1979, she was named "The Most Outstanding Home Economist of North Carolina." ECU's School of Home Economics has established the Miriam B. Moore Scholarship Fund for her services as chair and dean.

President of the NCCFR is George Shackelford, Dept. of Public Instruction, Education Bldg., Raleigh, NC 27603. Leolia G. Spaugh is past president, with Dr. Janis B. Shea, first vice-president; Rev. Maurice Nason, second vice-president; Gwendolyn Paschall, secretary; and K. Isabelle Buckley, treasurer.

## Oregon

February 19, 1988, is the date for the Oregon Council on Family Relations 1988 annual conference. The suggested theme will be "Starting Up and Getting Funds." Marilyn Flick is president of the Council.

## South Carolina

President of the 1987-88 South Carolina Council on Family Relations is Dr. Lillie Glover, School of Home Economics, SC State College,

Orangeburg, SC 29115. Dr. Susan Webb is vice-president for membership, with Dr. Henry McKay as vice-president for programs.

Other officers are Ruth Martin, secretary/treasurer, and members-at-large Rebecca Mace, Dr. Brenda J. Vander Mey, and Dr. Elizabeth Norrell.

The annual conference in February drew 145 persons. Dr. Richard Gelles presented information on family violence. Rep. Parker Evatt gave a legislative update on child welfare, pornography with children, adoption, prohibition of distribution of birth-control materials in state schools, children's commitment law, child-support enforcement, and the Children's Trust Fund (which received \$240,000 in 1986 through voluntary contributions on the State tax form).

Three afternoon workshops were on sexual victimization of male children, alcohol abuse and child mistreatment, and intervention in domestic violence.

## Southeastern

"Choices for Stronger Families" was the theme of the 1987 SCFR annual conference in Baton Rouge, LA. Planning committee members were Rosalie Bivin, Peggy Draughn, Betty Fairchild, Eloise Futrell and Gladys Hildreth.

NCFR Executive Director Mary Jo Czaplewski opened the conference.

Keynote speaker on "Stronger Families through Informed Choices," was J. Ross Eshleman.

Four round table sessions were held in the morning, with Carroll Freeman, of Baptist Theological Seminary in New Orleans, giving the luncheon address.

In the afternoon, panelists explored ways that professional communities--ranging from the medical community to the extension service--are responding to the needs of families. Participants continued to explore these issues in five focus sessions.

Tuesday's keynote was by Alan Acock, professor of sociology at LSU. He spoke on "Different Family Structures as They Affect Adolescent Well-Being."

Sessions also were held on family communication and human sexuality; aging; family wellness; employment, work and the farm family; and children in the family.

See Councils on page 9

## Affiliates from page 7

the case), the NCFR Board of Directors has awakened them.

In conclusion, I do not apologize for the emphasis of this article or for the length of it. I could do nothing else but attempt to respond to what I see as my responsibility to convey what I see and how I view what is going on. Let us continue to encourage NCFR membership for our affiliate-only members, rather than require NCFR membership. Britton Wood President Association of Councils

### NCFR PUBLICATIONS

**THE SINGLE PARENT FAMILY**, a special issue of *Family Relations*. Edited by Shirley Hanson and Michael J. Sporkowski. January 1986. ISSN: 0197-6664. (No. 291). . . . . \$13.00

**THE FAMILY AND HEALTH CARE**, a special issue of *Family Relations*. Edited by William Doherty and Hamilton McCubbin. January 1985. ISSN: 0197-6664. (No. 290). . . . . \$13.00

**REMARRIAGE AND PARENTING**, a special issue of *Family Relations*. Edited by Kay J. M. Marlin and Thelma Tallman. . . . . \$13.00

**THE FAMILY WITH HANDICAPPED MEMBERS**, a special issue of *Family Relations*. Edited by Eileen M. Earhart and Michael J. Sporkowski. January 1984. ISSN: 0197-6664. (No. 288). . . . . \$13.00

**FAMILY LIFE EDUCATION**, a special issue of *Family Relations*, edited by J. Joel Moss and Ruth Brasher. October 1981. ISSN: 0197-6664. (No. 284). . . . . \$6.50

**A DECADE OF FAMILY RESEARCH AND ACTION - THE SEVENTIES**, a special issue of *Journal of Marriage and the Family*, edited by Felix Berardo. November 1980. ISBN: 0-916170-05-9. (No. 283). . . . . \$8.95

**A DECADE OF FAMILY RESEARCH AND ACTION, 1960-1969**, edited by Carl-fred B. Broderick. A paperback review of family theory, research, and social action during the 1960's. ISBN: 0-916174-00-X. (No. 252). . . . . \$6.50  
Double Volume Set . . . . . \$15.00

**FAMILY STRESS, COPING, AND ADAPTATION**, a special issue of *Family Relations*, guest edited by Hamilton I. McCubbin and Pauline G. Boss. October 1980. ISBN: 0-91617408-5. (No. 282). . . . . \$6.50

**FAMILY POLICY**, a special issue of *Journal of Marriage and the Family*, with Gerald W. McDonald and F. Ivan Nye as guest editors. Includes published sources of statistics on the family. August 1979. ISBN: 0-916174-04-2. (No. 277). . . . . \$6.50

**APPLICATION PROCEDURES AND COLLEGE AND UNIVERSITY CURRICULUM GUIDELINES FOR CERTIFICATION OF FAMILY LIFE EDUCATORS**. ISBN: 0-91617408-5. . . . . \$4.50

**GUIDE TO GRADUATE FAMILY PROGRAMS**, a guide highlighting programs, admission, and career information for masters and doctoral family programs operating in 71 U.S. and Canadian degree-granting institutions. Edited by Carolyn Love. May 1982. ISBN: 0-916174-07-7. (No. 258). . . . . \$4.50  
Students, \$3.50; Others, \$4.50

### PUBLICATIONS ORDER FORM

	Quantity	Quantity	Quantity
Please send me:	No. 291 _____	No. 284 _____	No. 282 _____
	No. 290 _____	No. 283 _____	No. 277 _____
	No. 289 _____	No. 252 _____	CFLE _____
	No. 288 _____	Double Volume Set _____	No. 258 _____

My check for \$ \_\_\_\_\_ is enclosed, including \$2.50 for postage/handling.  
Bill me. Add \$5.00 for postage/handling.

Name \_\_\_\_\_  
Street \_\_\_\_\_  
City \_\_\_\_\_ State/Province \_\_\_\_\_ Zip/Postal \_\_\_\_\_  
Phone ( ) \_\_\_\_\_

National Council on Family Relations  
1910 West County Road B, Suite 147  
St. Paul, MN 55113  
Phone: (612) 633-6933



## Councils from page 8

During its business meeting, the executive board approved funds to support the opening reception for NCFR in Atlanta in November, and plans were approved to encourage student participation through awards for outstanding presentation proposals for the next SCFR annual meeting.

President for 1987-88 is Sharon A. Sharp, with William H. Reid as first vice-president, finance, and William Mason, second vice-president, membership. Secretary is Mary Belle Tuten, and Evelyn Rooks-Weir is treasurer. Leo Hawkins is newsletter editor, and Peggy Draughn heads the nominating committee.

### Texas

April 1 through 3 were the dates of the 1987 Texas Council on Family Relations annual conference, "Religion and the Family."

Keynote speakers were Henry P. Cisneros, mayor of San Antonio, site of the meeting; Dr. James W. Fowler III, who spoke on "The Family as Ecology of Selfhood and Faith;" David L. Givens, "The Changing Definition of Father;" and the Rev. Ilene B. Dunn, "The Roles of Women in Religion."

Sessions also were held on enrichment programs for couples and families, individual growth issues, religion and special issues, androgynous images of God, parenting issues, clergy in counseling roles, family religiosity, faith, liberation of men and women, healthy families, family ministry, religious issues related to death, families in crisis, and issues in moral development and moral judgement.

NCFR Executive Director Mary Jo Czaplewski welcomed attendees during the Thursday banquet.

Texas Tech now has a council on Family Relations, thanks to the Texas Council. The university-recognized association has 80 members, a \$1,000 account, a \$5,000 scholarship benefit on the agenda, and enthusiastic support from the TX Tech Dept. of Human Development and Family Studies and TCFR, plus other family service oriented associations and counseling centers in the area.

Originally chartered as the Family Studies Association, the organization now also is known as the TX Tech Council on Family Relations, thanks to approval in the spring by the TCFR. President of the student group is Tim Bookout.

### Utah

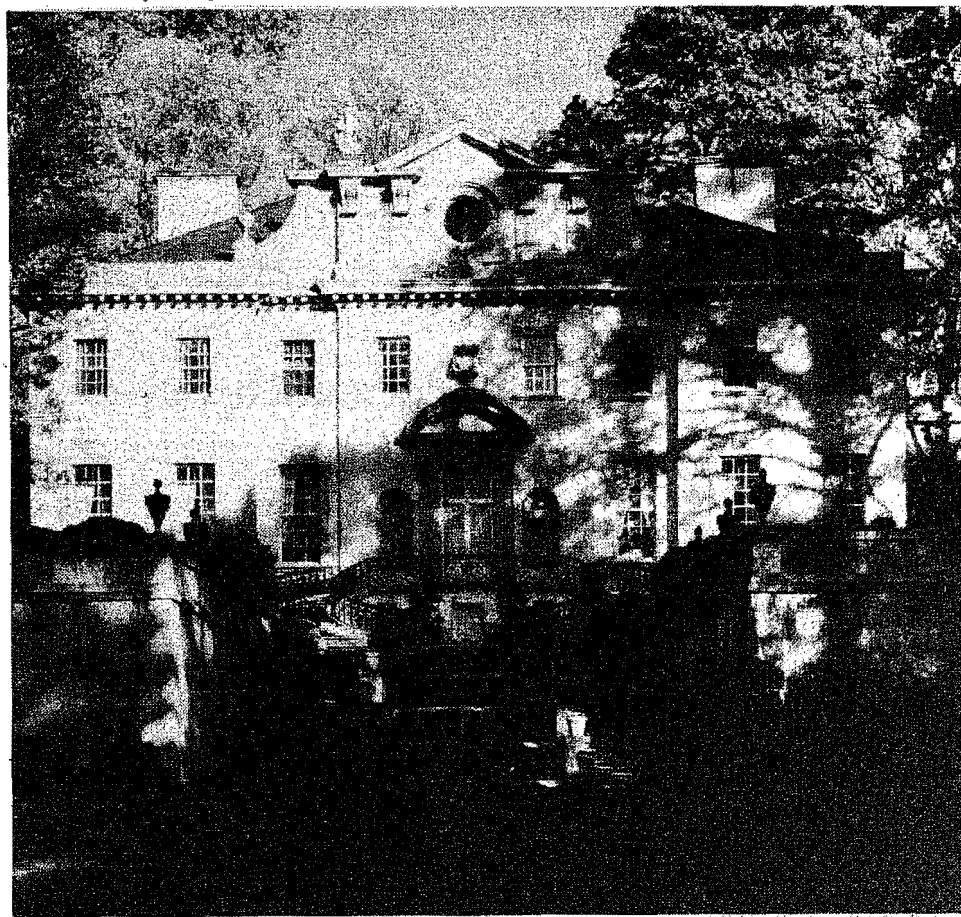
"Adolescents in Families," was the theme of the March annual meeting of the Utah Council on Family Relations.

The afternoon plenary session featured Steve McLaughlin, director of Health and Population Research Center in Seattle, WA, and Greer Fox, head of the Dept. of Child and Family Studies at the University of TN in Knoxville.

McLaughlin addressed, "An Overview of Batelle Seattle's Adolescent Research Program," while Fox's topic was "Mother-Daughter Communication in Relation to Adolescent Sex and Contraceptive Behavior."

Discussants were Art Elster, University of UT; Kathleen S. Bahr, Brigham Young University; and Stephan Wilson, MT State University.

Sessions also were presented on Assessment of Adolescent Beliefs, Identity and Decision Making; Intervention with Adolescents and Families; and Findings from Survey Research.



## Swan House

Swan House, located in residential Buckhead section of northwest Atlanta, is maintained by the Atlanta Historical Society, which has its headquarters within the surrounding 22-acres of terraced lawns, forest, flowers, gardens and winding footpaths. The mansion was built during the late 1920s in Italian Renaissance style and incorporated a swan motif into the architectural detail and the furnishings. Photo by the Atlanta Convention and Visitors Bureau.

# Classified Ads

### University of Wisconsin-Madison: Family Studies

The Department of Child and Family Studies, in the School of Family Resources (Hamilton I. McCubbin, Dean), is embarking on a major effort to strengthen and expand its program in family studies. We are seeking candidates for three openings in the area of family studies: (1) tenured Associate or Full Professor starting August, 1988; (2) tenure-track Assistant Professor, starting August, 1988; (3) tenure-track Assistant Professor, starting January, 1988. We invite applications from individuals with strong evidence of excellence in scholarship at the forefront of research in family studies. Research focus is open, but we are particularly interested in individuals conducting research on family processes and interactions and on the family's transactions with the broader environment. Responsibilities include teaching graduate and undergraduate courses, supervising of M.S. and Ph. D. students, and conducting high quality research. The department does not offer clinical or counseling training. Doctoral degree in family studies, family sociology, family science, psychology or related field. Application deadline for positions #1 and #2 is January, 1988; for position #3, October 15, 1987. Send vitae and three letters of reference to Prof. Laurence Steinberg, Chair, Family Studies Search Committee, Dept. of Child and Family Studies, 1430 Linden Dr., University of Wisconsin, Madison, WI 53706. Applicants for Assistant Professor positions should indicate whether they wish to be considered for position #2, position #3, or either. The University of Wisconsin-Madison, one of the nation's largest and strongest research institutions, is an Equal Opportunity/Affirmative Action Employer.

**MSW, MS, PhD with training and experience working with families,** couples, groups and individuals with interest in women's therapy issues. Immediate opening in community mental health clinic comprised of a psychiatrist, four PhD psychologists, three MSW's and three predoctoral interns, in a town with a university of 10,000 students and the World Headquarters of Sentry Insurance. Postprobationary annual salary: \$29,900 (PhD level) or \$28,000 (Masters level).

Send vita and three letters of reference to:

Portage County Personnel Office  
1516 Church Street  
Stevens Point, WI 55481

Deadline for applications is June 30, 1987; however, all qualified applicants may be accepted after that date.

Portage County is an Affirmative Action/Equal Opportunity Employer.

University of Hawaii, Department of Human Resources invites applications for two positions available August 1, 1987. 1) Tenure-track position in Family Resources. Teach undergraduate courses in Family Resources with major emphasis in parent-child relations, parenting, and family life education;

conduct family research and related scholarly activities; provide service to the university and community; contribute to program development and advise students. MQ: Doctorate in Family Relations or related field. Competence in teaching undergraduate courses in parent-child relations, parenting, and family development. Demonstrated ability to carry out family research. 2) Two-year temporary position in Family Life-cycle Development. Teach undergraduate life-span development courses, with major emphasis in adolescence through old age; may teach some family relations courses; conduct life-span development research; provide service to the university and community; contribute to program development and advise students. MQ: Doctorate in Family Relations, Human Development, Gerontology or related field. Competence in teaching life-span development and family relations courses at the undergraduate university level. Ability to carry out research. Send resume, official transcripts and three letters of recommendation to Dr. Audrey Gieseking-Williams, Chairperson, Department of Human Resources, 2515 Campus Road, Miller 110, University of Hawaii, Honolulu, Hawaii 96822. Inquiries (808) 948-8105. Deadline July 1, 1987 or until filled. University of Hawaii is an affirmative action/equal opportunity employer.

### EASTERN NEW YORK CORRECTIONAL FACILITY

Inmates at Eastern New York Correctional Facility need current issues of the *Journal of Marriage and the Family*. They have the opportunity to earn both graduate and undergraduate degrees while in prison. The State University of New York at New Paltz provides lending privileges of books from their library but journals do not circulate. If you are able to provide current issues on a continuing basis please contact John Glover (78B0069), Box 338, Napanoch, NY 12458.

### FAMILY LIFE EXTENSION SPECIALIST Department of Family Relations and Human Development

Tenure-track position, assistant or associate professor. 80% extension and 20% research, 12 month appointment. Starts: January 1, 1988. Ph.D. or equivalent in family science, human development, or closely related field. Successful professional experience in Cooperative Extension or related field preferred. Evidence of ability to work with varied audiences and to conduct scholarly research necessary. Send letter, resume, transcripts, and three letters of reference by September 30, 1987, to: Dr. Geoffrey Leigh, Department of Family Relations and Human Development, 1787 Neil Avenue, The Ohio State University, Columbus, OH 43210. The Ohio State University is an Equal Opportunity/Affirmative Action Employer.

See you  
in Atlanta

# 4 Master Lectures set for Atlanta

Four master lectures at the annual conference will feature:

The first Evelyn Millis Duvall Master Lectureship, sponsored by the University of South Florida at Sarasota, will be presented personally by Evelyn Millis Duvall, family life consultant, author and former NCFR executive secretary. Her topic will be "Family Development's First Forty Years."



Evelyn Millis Duvall

The Religion and Family Life Section is sponsoring a session featuring a lecture by **James Fowler**, director of the Center for Faith Development, Chandler School of Theology, Emory University, on "The Family as Ecology of Selfhood and Faith."

**Mirra Komarovsky**, emeritus professor, Barnard College, Columbia University, the 1986 Burgess Award Winner, will present the "Burgess Award Address."

**Alice Rossi**, noted author, researcher, and professor at the University of Massachusetts, who will speak Monday, November 16, at 5 p.m. on the theme, "Gender and Parent-Adult Relations in a Life Course Program." The Research and Theory Section is sponsoring this session.



Make plans now to be at the Annual Meeting in Atlanta and enjoy all that this exciting city has to offer! From the top of the Westin Peachtree Plaza Hotel, site of the annual conference, a spectacular view of the city gives you a glimpse of what's in store.

To the north, Midtown is the sight of the High Museum of Art and Symphony Hall. Midtown maintains a "neighborhood" feeling with its many sidewalk cafes and beautiful churches. The Fox Theatre in midtown schedules Broadway musicals each fall.

Beyond Midtown is Buckhead, filled with fabulous homes and varied night life. The Atlanta Historical Society in the heart of Buckhead, is the sight of a Civil War Museum, an 1800s authentic farm house, and the beautiful Swan House Mansion and gardens. Lenox Plaza and Phipps Plaza in Buckhead both offer glamorous specialty shops and department stores, such as Neiman Marcus, Saks' 5th Avenue and Lord & Taylor.

Further north is the historic town of Roswell, a heaven on earth for the antique lover. Visit the old town square if you want to see traditional southern crafts and primitive antiques, or want to sample some real southern cooking.

Just to the north of Roswell rise the beautiful Appalachian Mountains. Fall colors often peak in mid-November, so be sure to bring your camera! The small towns of north Georgia offer a wide variety of sights and sounds. Bluegrass music at the Georgia Mountain Festival, the European flavor of the Alpine Village in Helen, and Babyland General Hospital in Cleveland (where Cabbage Patch Dolls are born), are all within two hours by car of downtown Atlanta.

Now let's turn our attention to the west. On the west side of downtown is the Omni Complex, home of the Atlanta Hawks (who will be playing in November). You can also drop in on Ted Turner and his Cable News Network, or just visit the Omni's shops and restaurants.

Further west, among the beautiful Victorian homes of the "Westend" district, stands the "Wren's Nest" where Joel Chandler Harris, author of the Uncle Remus stories, lived. The Wren's Nest offers tours and also sponsors frequent story-teller's conventions, focusing particularly on the African storytelling traditions.

Looking east, we find the "Auburn Avenue" district. On "Sweet Auburn" stands the Ebenezer Baptist Church where Martin Luther King Jr. served as pastor, and the Martin Luther King Jr. Memorial where he is buried. Auburn Avenue is the sight of "King Fest" activities, including jazz, arts and crafts, and children's activities.

Also to the east is the Atlanta Civic Center, where during the week of the annual conference the Atlanta Ballet will be performing Carmina Burana. Further east is the Jimmy Carter Library, which includes a museum and a beautiful view of the city from the gardens. Near the Carter Center are the artists' colonies in

the "Virginia Highlands" and "Little Five-Points" district. Both areas contain restaurants, shops and night-life.

To the southeast is the "Grant Park" area, home of Zoo Atlanta, the Cyclorama Civil War Exhibit, and many beautifully restored Victorian homes. Just outside Atlanta on the east side is Stone Mountain, sight of an authentic antebellum mansion, river boat, steam train, beautiful woodlands, and of course, the mountain itself, with its Civil War Carving. In the historic town of Stone Mountain, you can find antiques and southern crafts.

Finally, we look south. In the southern part of downtown Atlanta stands the State Capital Building, with its gold dome. The gold for the Capital dome was mined in the north Georgia mountains. Near the Capital is the Fulton County Stadium, home of the Atlanta Falcons.

Are you asking yourself, how do I find all these places? Well, fortunately, Atlanta has a wonderful transportation system called MARTA. If you arrive at the Atlanta airport, you can catch a bus for a ten-minute ride to the southern-most MARTA rail station. From there, it's a short trip to the Peachtree Center station, near the Westin Peachtree Plaza Hotel (all for 60 cents!). If you arrive on AMTRACK, you are even closer to the hotel (on the same street!) and can go directly by bus.


When you're ready to see the city, MARTA can take you north to Midtown and Buckhead by train, and to Roswell by bus. You can also take a MARTA train to the Westend, Omni, Capital, and Stadium. Train and bus routes to restaurants and attractions will be available at the local information desk during the annual conference.

See you in Atlanta this November!  
Dana Scott,  
Local Arrangements Chair

## International visitors invited to local homes

The Westin Peachtree Plaza in Atlanta provides rates at a considerable savings to conference attendees. If it is necessary to find other housing, or if you know of International visitors who plan to attend the Conference and would like to stay in homes in the Atlanta area, please contact Luciano L'Abate, 2079 Deborah Drive, Atlanta, GA 30345 (phone 404-325-9484).

## Next deadline for REPORT is July 15


**THE WESTIN PEACHTREE PLAZA**  
Atlanta

**Registration**  
 Peachtree at International Boulevard, Atlanta, GA 30343-9986  
 (Telephone: 404-659-1400)  
 Welcomes the  
**National Council on Family Relations Annual Conference**  
 November 14-19, 1987

Name \_\_\_\_\_  
PLEASE PRINT

Address \_\_\_\_\_  
STREET

CITY \_\_\_\_\_ STATE \_\_\_\_\_ ZIP \_\_\_\_\_

Company \_\_\_\_\_

**Accommodations Desired:**  
 (check one)  
 Convention Rate:  
☐ \$76 Single (1 person))  
☐ \$88 Double (2 persons)  
☐ \$88 Twin (2 persons)

Name of Roommate \_\_\_\_\_

ARRIVAL \_\_\_\_\_

DEPARTURE \_\_\_\_\_

**Notice to our Guests:**  
 The management is not responsible for money, jewelry, or other valuables, unless deposited in safe deposit boxes provided for that purpose, subject to applicable liability limits.

**RESERVATION REQUESTS MUST BE RECEIVED 21 DAYS PRIOR TO ARRIVAL.** Reservations will be held until 6 pm unless accompanied by deposit or an accepted credit card number and signature.

Signature \_\_\_\_\_

Please indicate below how you will be settling your account.
 

☐ 1. American Express
 ☐ 5. Diners Club

☐ 2. Visa
 ☐ 6. Mastercard

☐ 3. Discover
 ☐ 7. Other \_\_\_\_\_

☐ 4. Cash

**FOR GUARANTEED RESERVATIONS ONLY**  
 I understand that I am liable for one night's room and tax which will be deducted from my deposit, or billed through my credit card in the event that I do not arrive or cancel on the arrival date indicated.

Signature \_\_\_\_\_

**PLEASE NOTE:**

- Mail reservations directly to the Westin Peachtree Plaza Hotel, Peachtree at International Boulevard, Atlanta, GA 30343-9986.
- Cutoff date for reservation requests is **October 24**. After that date NCFR's block of rooms will be released and requests will be honored on a **space available basis**, at the convention rate.
- Discounted convention rates are applicable from November 11-November 24. To receive discounted rates either mail in this form or call 404-659-1400. If calling be sure to **identify yourself as a NCFR Conference Attendee**.
- State and local taxes of 8% will be added to your daily room rate.

**For Hotel Use Only:**  
 Clerk: \_\_\_\_\_ Group: NCFR  
 Cashier: \_\_\_\_\_ AMT: \_\_\_\_\_

# AIDS task force organized by NCFR

In response to the AIDS epidemic, the NCFR AIDS Task Force was established at the last Board of Directors meeting. It will be chaired by Dr. Sandra L. Caron, and its membership will be composed of concerned persons from the various Sections. The AIDS Task Force will serve as an action group designed to educate and mobilize family professionals so that they might take appropriate action in their own sphere of influence.

The impetus for the NCFR AIDS Task Force came from an open forum on AIDS at the 1986 meeting in Dearborn, at which members of the AIDS Task Force of Groves discussed the current facts and issues. The Groves AIDS Task Force, chaired by Dr. Eleanor Macklin and consisting of a 45 member group of professionals representing a wide range of organizations and affiliations, met for five days in San Antonio in April, 1987, to develop plans for a forthcoming book, **AIDS: Implications for Families and Communities**. This document, to be published in the Fall, 1987, will delineate the issues and provide guidelines for action by family professionals and family-related organizations.

## Hotel, Airline rates set

With the changing tax laws it is important that conference attendees take advantage of the best hotel and airline rates. The 1987 NCFR Program Committee has made some program changes and contracts with airlines to help in reducing costs for attending the convention. The program was moved back a day so that travelers can come to Atlanta on Saturday and take advantage of the lowest maxi and super-saver fares. The second step in helping was to contract with Delta Airlines and Stratton Travel, Inc., Franklin Lakes, NJ to give NCFR the lowest possible rates.

Delta Airlines is giving a 5 percent savings off most Delta published round-trip super-saver and maxi fares, providing all rules and conditions of the airfares are met. (Some promotional fares discounted greater than 75 percent off the normal round-trip coach fares may not be included in this offer.) These fares are applicable when traveling to Atlanta between November 12-19, 1987. Seven days advance ticketing will be required.

For passengers not qualifying for any published discounts, a 40 percent discount will be offered on Delta's domestic system for travel to Atlanta. Canadian attendees will be delighted to learn that travel from Delta's Canadian cities will be discounted 35 percent. This discount will be based on the full non-discounted round trip day coach rates, and will require departure to Atlanta between November 12-19, 1987. Seven days advance ticketing will be required.

We encourage NCFR attendees to take advantage of this offer and contact Stratton Travel. If there are no Delta flights originating from your city, Stratton Travel will check the airlines which are available for you and find the lowest fare.

The Groves AIDS Task Force is divided into the following 5 panels:

- Epidemiology and Public Health (Richard Needle, chair)
- Education and Prevention (Jeri Hepworth, chair)
- Human Services and Treatment (Kay Tiblier, chair)
- Societal Implications (Bruce Carter, chair)
- Public Policy Issues (Elaine Andreson, chair)

The initial activity of the NCFR AIDS Task Force will be to provide an all-day pre-conference session, Saturday, November 14, at the 1987 meeting in Atlanta, entitled, "Responding to the AIDS Crisis." The program will consist of presentations by the chairs and various members of the Groves AIDS Task Force panels, to be followed by meetings of the various NCFR Sections to consider what action they wish to take with regard to the AIDS crisis. The program will be as follows:

### NCFR PRECONFERENCE WORKSHOP "RESPONDING TO THE AIDS CRISIS"

November 14, 1987

8:00 am - 8:30 am	Registration
8:30 am - 8:45 am	Welcome Sandra L. Caron, Chair of the NCFR AIDS Task Force
8:45 am - 9:30 am	Keynote "AIDS: Implications for Families" - Eleanor Macklin
9:30 am - 10:15 am	Epidemiology and Public Health Issues - Richard Needle*
10:15 am - 10:30 am	Break
10:30 am - 11:15 am	Education and Prevention - Jeri Hepworth*
11:15 am - 12:00 pm	Human Services and Treatment - Kay Tiblier*
12:00 pm - 1:00 pm	Lunch
1:00 pm - 1:45 pm	Societal Implications - Bruce Carter*
1:45 pm - 2:30 pm	Public Policy Issues - Elaine Anderson*
2:30 pm - 2:45 pm	Break
2:45 pm - 4:00 pm	Small Group Discussions: Divide into groups by NCFR Sections, Facilitators for the groups will be NCFR AIDS Task Force members
4:00 pm - 5:00 pm	Wrap-Up: Reports from each section by facilitator on where to go from here - how NCFR members plan to move forward, etc...

\* Please note: Each of the presentations will be in the form of a panel, chaired by the person listed (Richard Needle, Jeri Hepworth, Kay Tiblier, Bruce Carter, Elaine Anderson).

## No -host dinners planned in Atlanta

### Networking No-Host Dinners:

On Monday and Wednesday evenings the program committee has set aside time for meeting professionals and going out together (dutch treat) for the evening. NCFR Sections will have a representative to act as host. A member of the Local Arrangements Committee will also co-host the group and make the reservations at various restaurants. Sign-up sheets will be available at the Local Information Table in the eighth floor lobby of the Westin Peachtree Plaza Hotel.

The Westin Hotel has many good restaurants within walking distance, and the "MARTA" line is 1/2 block from the hotel. By taking the MARTA hundreds of restaurants are available within just a few minutes.

The pre-conference session on Saturday is open to all NCFR members and it is hoped that a majority of the membership will attend. Specific information will be included with the registration materials for the 1987 meeting in Atlanta.

In addition to the pre-conference session, the Sunday night plenary will consist of presentations on AIDS by Dr. James Curran, head of AIDS research, Center for Disease Control, Atlanta, GA, and a panelist who has dealt with AIDS on a personal level.

In order to coordinate national efforts, representatives from the NCFR AIDS Task Force will join forces with representatives of other related organizations to form the National Coalition on AIDS and Families, which will hold its first meeting on Sunday, November 15, at the NCFR conference in Atlanta.

Any persons interested in serving on the NCFR AIDS Task Force should contact their Section chair and have their name and address forwarded to Dr. Sandra L. Caron. Persons not belonging to a Section should contact Dr. Caron directly: Dr. Sandra L. Caron, Office of Residence Services, 202 Steele Hall, Syracuse, NY 13244-1120, (315) 423-3637.

## Hotel Reservations

A reservation form for the Westin Peachtree Plaza Hotel, Atlanta, GA, the Headquarters Hotel for the NCFR Conference, is printed in this copy of the **NCFR REPORT**. Rates are \$76 for a single and \$88 for a double/twin room. This represents a savings of 40 percent below the regular rate.

If you wish to call the Westin for reservations, be sure to state that you are attending the NCFR Annual Conference to receive these rates. Convention rates are valid from November 11 to November 24.

## Meeting

### Lincoln, NE

Stepfamily Association of America, Inc. will hold its sixth annual national conference, "Step into the Heartland: Building Stepfamily Strengths," at the Nebraska Center for Continuing Education, University of NE East Campus, Lincoln. Workshops and presentations are scheduled for stepfamily members and for all professionals who work with and research stepfamily relationships.

For conference registration materials and/or workshop proposal information contact: Sharon L. Hanna, Conference Chairperson, 6317 Deerwood Dr., Lincoln, NE 68516; 402-423-8705 or 402-423-4103.



**stratton travel inc.**

CENTURY OAKS BUILDING

777 FRANKLIN AVENUE • FRANKLIN LAKES

Phone: 201-891-3456 Nationwide 800-628-6668

STRATTON TRAVEL  
in cooperation with NCFR  
and Delta Airlines

offers you an exclusive  
MEETING SAVER FARE

To The National Council on  
Family Relations  
Conference in  
Atlanta, Georgia,  
November 14-19, 1987

For more information please mail this form to Attn: Group Dept., Stratton Travel, 777 Franklin Ave., Franklin Lakes, NJ 07417. Phone 201-891-3456, 800-628-6668.

Name \_\_\_\_\_

Address \_\_\_\_\_ Zip \_\_\_\_\_

Telephone-day \_\_\_\_\_ The Airport nearest to my home is \_\_\_\_\_

I wish to depart on \_\_\_\_\_ (date at \_\_\_\_\_ (time).

I wish to return on \_\_\_\_\_ (date at \_\_\_\_\_ (time).

Credit card number \_\_\_\_\_ Exp. date \_\_\_\_\_

Signature \_\_\_\_\_



# Sections plan annual events

## Education/Enrichment

### ATTENTION: ALL FAMILY LIFE EDUCATORS!

Marilyn Flick has been selected to organize a skills exchange workshop for Family Life Educators as part of the November NCFR Conference. Here is an excellent opportunity for program participation. The purpose of the workshop is to provide time for the experienced and new Family Life Educator to share teaching strategies and resources which are effective in teaching the content of their courses.

Are you a beginning educator searching for instruction strategies which will involve students in the learning process? Are you an experienced educator with a terrific method which helps students enjoy research and theory? Are you a curriculum specialist with a program to share? Are you a minister or counselor who has developed effective group processes? Are you interested in collecting new resources and teaching ideas?

If you have answered yes to any of the above questions - then this workshop is for you!

Contact Marilyn Flick, 4220 Hilyard, Eugene, OR 97405, (503) 343-8823...if you wish to participate in this workshop. Bring samples of innovative instructional strategies that work for you. Equipment needs must be requested before the conference.

Watch for the Education & Enrichment News item in the next NCFR Report for more sneak previews about the 1987 Program.

See you in Atlanta!  
Betty Barber

## Ethnic Minorities

The Ethnic Minorities Section is sponsoring a special presentation on Wednesday, November 18, from 1:30 to 3:15 p.m. on "Afro-American in Scholarship and Media: An Exercise in the Sociology of Knowledge." The lecturer will be John Sibley Butler, Ph.D., professor of Sociology, Department of Sociology, University of TX at Austin.

Peggye Dilworth-Anderson and Harriette McAdoo are soliciting manuscripts on Parent-Child Relations to be used by practitioners serving ethnic minority families through education, counseling, and community service. Manuscripts will be published in the July, 1988, issue of Family Relations. For manuscript guidelines please check page 116 in the January, 1987, issue of Family Relations. DEADLINE FOR SUBMISSION OF MANUSCRIPTS IS NOVEMBER, 1, 1987.

The Oral History of Ethnic Minorities will be presented on Wednesday evening, November 18, at 8:30 pm. Everyone is welcome to attend.

## Family Action

The Family Action Section has an exciting and diverse program scheduled for the Atlanta conference. There are paper sessions, panels, symposia, workshops, posters and focus group sessions scheduled throughout the week.

Paper sessions will address the following topics: adolescent pregnancy, child support, suicide, incest, work and unemployment, family caregiving of children and adults, family stress and satisfaction, day care, home-care and latch key children. There is a workshop on "media and family professionals", a symposium on the "quality of life in rural families", and a panel on "family therapy and low income families".

Several focus groups have planned informative programs. You are encouraged to attend the group of your choice. Meet other professionals with whom you share interests.

Plan to attend the Family Action business meeting. The new officers will be introduced, and your involvement is important. The results of the interest survey completed by Family Action members will be discussed by Charles B. Hennon.

There are many sessions oriented to professionals who want to assist families. Attend the Family Action sessions and learn information you can use in your work with families.

Timothy H. Brubaker

## Nurses Focus Group

The Nurses' Focus Group of the Family Action Section will be meeting in Atlanta. Shirley Hanson and Fred Bozett will report on their national study of family nursing curricula conducted over the past year.

The focus group provides an excellent forum for meeting other nurses whose special interest is in the family and family health. About fifty nurses yearly attend the annual conference, and this year we anticipate there will be even more.

If you are a nurse and are planning to attend the annual conference, be sure to mark your calendar so that you attend the focus group meeting. The report of the curriculum study is of great interest; you won't want to miss it.

Fred Bozett

## Family and Health

Plans are well underway for Family and Health-sponsored programs at the November conference in Atlanta. We are especially pleased to offer compact programming that begins on Monday morning, November 16, and concludes in the late morning Thursday, November 19.

Among the highlights of our program is an opening session on Information and Family Health featuring Drs. Janice Bell, Wendy Watson, and Lorraine Wright of the University of Calgary and Drs. Joan Patterson and Jeffery Zimmerman. Both papers will

address the use of circular questioning. Video tape demonstration of clinicians working with families will be included in these presentations.

Other sessions will feature an in-depth report on the California Family Health Project, panels on adolescent health care, ethnic and minority health concerns, family definitions of health problems, issues in family caregiving, and health topics across the life cycle. Many fine poster sessions and round tables will be offered. Start making your plans to be there!

The Family and Health Section's newsletter has been distributed to section members. Under the editorial direction of Dr. Sandra Burge and assisted by Catherine Chesla, this issue featured a lead story on AIDS by Dr. Jeri Hepworth and colleagues from the University of Connecticut and an in-process research report from Dr. Joan Patterson, University of Oklahoma. We solicit your contributions for the next issue which goes to press in June. Send these to Catherine Chesla and Sandra Burge/c/o Catherine L. Gilliss, University of California, San Francisco, Box 0606, San Francisco, California 94143-0606.

**Special Note:** Due to a printing error, the name of Shirley Hanson, vice-chair of the Family and Health Section, was inadvertently omitted from the last issue of NCFR REPORT. Dr.

Hanson has been active in NCFR for many years and is recognized as an organizer of the Family Nursing Focus Group. She will serve as Section Vice-Chair from November 1986 to November 1988.

Catherine Gilliss

## Feminism

The Feminism and Family Studies Section received 23 abstracts for consideration for presentation at the 1987 annual conference in Atlanta. Each abstract was reviewed by at least three Section members and reviewer comments were sent to the author(s).

We would like to thank the following individuals for serving as reviewers in this process: Jean Atkinson, Kristine Baber, Gloria Birn, Rosemary Blieszner, Sandra Burg, Sandra Caron, Linda Haas, Terri Juma, Sally Lloyd, Jay Mancini, Bob Milard, Karen C. Morgan, Karen Polonka, Margaret Ray, Suzanna Smith, Akemi Sugawara, Catherine Surra, Janet Teachman, Linda Thompson, and Ani Zvonkovic. The quality of the reviews was very high, and we feel certain they will contribute to very high quality sessions in November. There will be more about the program in the next newsletter.

Currently, our Section has 12

## STUDENT VOLUNTEERS NEEDED NCFR ANNUAL CONFERENCE

The National Council on Family Relations 1987 Annual Conference will be held November 15-19 at the Westin Peachtree Plaza Hotel, Atlanta, Georgia. Volunteers will be needed for both conference planning committees and for local arrangements at the time of the conference. Your help will be appreciated. For eight hours of work you will receive free registration. To be considered for a volunteer position, please complete this application form and return to:

Ms. Suzanna Smith  
Dept of Child and Family Development  
College of Home Economics  
University of GA  
Athens, GA 30602

Name \_\_\_\_\_ School \_\_\_\_\_

Address \_\_\_\_\_

Phone: Days \_\_\_\_\_ Evenings \_\_\_\_\_

Please check the areas in which you would be willing to assist:

<input type="checkbox"/> registration	<input type="checkbox"/> exhibits	<input type="checkbox"/> audio-visual & audio-taping
<input type="checkbox"/> local information	<input type="checkbox"/> student party	<input type="checkbox"/> miscellaneous
<input type="checkbox"/> Sunday reception	<input type="checkbox"/> employment service	<input type="checkbox"/> press room
<input type="checkbox"/> no preference	<input type="checkbox"/> poster session	<input type="checkbox"/> fund-raiser

Check which of the following times you'd be willing to volunteer:

Saturday (11/14)	Sunday (11/15)	Monday (11/16)	Tuesday (11/17)	Wednesday (11/18)	Thursday (11/19)
<input type="checkbox"/> morning	<input type="checkbox"/> morning	<input type="checkbox"/> morning	<input type="checkbox"/> morning	<input type="checkbox"/> morning	<input type="checkbox"/> morning
<input type="checkbox"/> afternoon	<input type="checkbox"/> afternoon	<input type="checkbox"/> afternoon	<input type="checkbox"/> afternoon	<input type="checkbox"/> afternoon	<input type="checkbox"/> afternoon
<input type="checkbox"/> evening	<input type="checkbox"/> evening	<input type="checkbox"/> evening	<input type="checkbox"/> evening	<input type="checkbox"/> evening	<input type="checkbox"/> evening

For more details or clarification, contact: Suzanna Smith (404) 542-4824  
Lily Paguro (404) 542-4939

# for Atlanta conference

members, up from 100 in December, 1986. We welcome new members and continue to encourage other NCFR members to join. We would like to encourage students, especially, to consider membership in the Feminism and Family Studies Section.

If anyone would like information about the Section before making a decision to join, please contact Alexis Walker, HDFS, Oregon State University, Corvallis OR 97331 (503) 754-4765.

Alexis Walker

## Religion/ Family Life

During the past several months, the officers of the Religion and Family Life Section have been occupied with the development of the section program for the annual NCFR Conference. We received a good response from our call for abstracts, and what we think is a very

interesting program has taken shape.

A highlight for our section will be the presentation on Wednesday afternoon, November 18, of a Master Lecture by James W. Fowler, director of the Center for Faith Development, Chandler School of Theology, Emory University. Dr. Fowler, well-known for his pioneering work on the stages of faith, will speak on the topic, "The Family as Ecology of Selfhood and Faith." Earlier in the week, Religion and Family Life will co-sponsor the Tuesday plenary address by David Snyder, social forecaster and life-styles editor to The Futurist magazine. The vice-chair for our section, Dr. Don Conroy, director of the National Institute for the Family in Washington, D.C., has visited with our plenary speaker regarding the interests of our section. Mr. Snyder has been most responsive and plans to integrate the aspect of religion and the family to his address.

A total of five sessions will be given to the presentation of papers. The broad

titles for the sessions are: "Media, Religious Beliefs and Social Behavior in the Family," "Impact of Religion on Marriage and Aging," "The Clergy Family System," and "Building Healthy Families: Strategies for Family Ministry and Counseling." Since it will include a presentation entitled "A Feminist Approach to Pastoral Counseling of Marital Rape Victims," this last session will be so-sponsored by Feminism and Family Studies. A team of six presenters, under the leadership of Gwendolyn Sorell of TX Tech University, will lead a symposium during the last session entitled, "Religious Systems and the Maintenance of Gender Roles."

Since the annual NCFR meetings begin earlier in the week this year than

in recent years, Religion and Family Life will sponsor an interdominational worship service on Sunday morning.

The abstracts submitted for the annual conference are encouraging, since they show a mix of research-oriented papers and presentations that will be of direct interest to practitioners. This is the kind of dual thrust we hope to foster. Our present section membership should find this annual conference well worth their time and expense, and others, who are not members, such as clergy, chaplains, counselors, religious educators and others who work with families in religious settings should also find these activities of our section of great interest.

Ronald M. Flowers, Section Chair

## Employment service organized

Looking for a top-notch employee to fill that position? Look no further than the employment service at the 1987 conference in Atlanta.

What is the NCFR employment service? It is a means for prospective employers and employees to learn about one another, leave messages, and have an opportunity to meet face to face.

How does it work? Employers submit position descriptions prior to the conference; prospective employees submit vitae. These are collected in

separate binders which are open for inspection at the employment desk. You can browse through vitae at your leisure for likely-looking prospects. See one you like? Leave a note on the message board for the person to contact you. Want to meet them? Space will be available for on-the-spot interviews.

What's the next step? Contact Cindy Winter at NCFR headquarters (612-633-6933) to request position listing forms. We're looking forward to seeing you in Atlanta!

## Networking prime reason for meetings

A national survey of convention attendees has indicated that the number one reason professionals attend conferences is to network with others in their field. The NCFR conference is no exception. As one walks through the halls of the hotel it is gratifying to see attendees talking with each other. The networking at NCFR provides opportunities for professionals and graduate students to interact. For a first-time attendee, a conference can be a lonely place until the opportunity arises to meet other professionals. This year's program committee is planning several events which will help attendees meet others.

**First-Timers Reception:**

On Sunday afternoon from 12:30 to 2:00, first-time attendees will have the

opportunity to meet members of the NCFR Board of Directors and become acquainted with the inner-workings of the National Council on Family Relations.

The last two events have been successful, and first-timers met other professionals, went to dinner together throughout the week, and formed friendships for the future. We encourage all those who are coming to the NCFR Conference for the first time to plan on attending this event.

**Printed Programs/Registration Forms:**

The complete printed program and registration form for the 1987 Conference will be mailed in late August. Be sure to take advantage of the Early Bird prices. You can save \$25 by registering before October 15.

Registration rates for this year are:

	Postmarked by October 15	Cost after October 15
NCFR Member	\$85	\$110
Second Family Member	\$55	\$ 80
NCFR Student Member	\$45	\$ 45
Non-NCFR Student Member	\$60	\$ 60
One-Day Registration	\$55	\$ 80
Special Package for non-NCFR Members (includes registration fee and 1 year's membership)	\$150	\$175
Special Package for non-NCFR Students (includes registration fee and 1 year's membership)	\$ 80	\$ 80

### NCFR 1987 ANNUAL CONFERENCE NOVEMBER 15-19, 1987 WESTIN PEACHTREE PLAZA HOTEL, ATLANTA, GA

Reservation Form for Student Rooms

NAME \_\_\_\_\_

ADDRESS \_\_\_\_\_

PHONE \_\_\_\_\_  
(Please Give Home and Office Numbers)

DATE/TIME ARRIVAL \_\_\_\_\_

DATE/TIME DEPARTURE \_\_\_\_\_

SMOKING \_\_\_\_\_ NON-SMOKING \_\_\_\_\_

ROOMMATE(S) - include name, address, phone \_\_\_\_\_

Please match me with \_\_\_\_\_ roommate(s) if possible

No additional roommates desired \_\_\_\_\_

Student Conference Room Rates:  
Triple \$89.00 + tax  
Double \$74.00 + tax  
Single \$64.00 + tax

Note: Other hotels in the downtown area have comparable rates since they are not able to offer student discounts.

Students must be responsible for their room costs; costs will not be assumed by NCFR or the hotel if the preferred room occupancy cannot be attained if roommates fail to attend the meeting. Proof of student status in NCFR will be needed if rooms are reserved directly with the hotel rather than through this service. Those making reservations with this service will be guaranteed to the hotel as having student status (following verification through NCFR). Reservations will be made through this service only until September 1, 1987. Any requests received after that time will be returned with instructions to make reservations directly with the hotel. Mail registration form and a deposit check for \$35.00, payable to Westin Peachtree Plaza Hotel, by September 1, 1987 to Jennie Barr, 1114 Frame, #6, Denton, TX 76201.

# Students/Young Professionals regain both journal

This is an easy and exciting column for us to write, because many positive actions were taken on behalf of students and young professionals at the March Board of Directors meeting. NCFR is working on solutions to difficult problems like membership retention and fund-raising. These solutions have included an increase in fees and reduction in some services, especially to students. But when the solution became part of the problem, the Board reversed its previous actions and strongly reconfirmed its commitment to students and young professionals.

We are delighted to announce that the Board decided to hold all student fees at their current levels and to offer, once again, both journals for one membership fee. There had been a great deal of concern throughout the entire membership when, as a cost-cutting measure, students were offered only one journal for their membership fee. By this action, the Board and NCFR made a renewed commitment to the professional development of students. NOW, we encourage you to renew or retain your membership in NCFR and to work with us to help our organization grow. Student membership is up already this year, and we hope to see even greater increases for the remainder of the year.

There were other important Board actions relative to students and young professionals. Each of the following issues was approved by the Board as a proposed constitutional amendment, to be passed along to the membership for approval:

(1) That the student/young professional representative to the Board

be elected by students and young professionals. At present, young professionals cannot vote for their representative to the Board; this amendment would remedy this serious oversight. The amendment defines "young professional" as a person who is not more than five years beyond the date of his or her most recent graduation from a degree program and does not imply a special membership category or special privileges except for voting;

(2) That each standing committee shall have two student/young professional representatives, each with a two-year term; the first year as a non-voting member and the second year as a voting member;

(3) That the officers of each section shall include student/young professional representation.

The issues numbered 2 and 3 were designed to put language into the constitution which will assure and protect student/young professional representation on committees and sections. A related motion, asking the Association of Councils to include in their by-laws a statement of policy concerning student/young professional representation, also passed. Another motion offered by your representatives, making "Student/Young Professional Representative" the official title for the position, to be used in all NCFR materials, also was approved by the Board. We hope you will support these amendments when they appear on the ballot, and that you will urge your colleagues to do so as well.

Plans for the annual meeting are coming along very well, and we

encourage your attendance in Atlanta. Please make your housing plans NOW! The student housing form appears in this issue of the REPORT and the deadline for submitting your request is **SEPTEMBER 1, 1987**. We are making a one-time-only offer for non-member students who attend the conference this year. For a total fee of \$80.00, non-member students can register for the conference AND receive a one-year membership in NCFR. This represents a 50 percent savings over regular membership costs. This is a special offer, and the membership will be renewed in subsequent years at the regular rate, but we hope you will take advantage of this offer if you are not a member, or tell your colleagues about it and encourage them to join NCFR.

A few quick notes to finish up...We will try to put our student/young professional nomination process on the same calendar as the rest of the nominations for NCFR offices this year. If you are interested in running for student/young professional representative either for 1987-88 or 1988-89, please contact us now. We also remind you to volunteer your time at the annual conference to receive free conference registration. Also, there is substantial interest in having students serve as co-chairs of various section meetings at the conference. Your interest in any of these activities can be indicated on the Student Interest Questionnaire which appears again in this issue of the REPORT. Just check the appropriate areas and return the form to us as soon as possible.

We saved the best for last: The

Board asked us to conduct a major survey of student/young professionals' needs before our meeting in November. Your responses will help us plan long-range policy and programs for students and young professionals. If you have ideas, questions, or issues you would like to see addressed by this survey, please write to us immediately. If you receive one of our questionnaires this summer, please complete and return it to us as quickly as you can. We will issue a full report of the results of this survey to the Board in November, and to you soon thereafter. Until then--Write Soon!

Pam Monroe  
LA House of Representatives  
Government Affairs  
P.O. Box 44486  
Baton Rouge, LA 70804

Jennie Barr  
Family and Consumer Studies  
TX Woman's University  
Denton, TX 76204

Two special events will be offered to the Students/Young Professionals at the annual conference in Atlanta. The Skills Exchange is presently scheduled for Monday night and the Informal Breakfast meeting is presently scheduled for Tuesday morning.

The Skills Exchange features a forum for interaction among students and new professionals. All members and conference attendees are invited to participate. A panel discussion on "Academic and Non-Academic Career Options for Students and Young Professionals in Family Science" will be moderated by Pamela A. Monroe and Jennie Barr. Student and Young Professional speakers will share their experiences in government, business consulting, counseling and teaching.

At the Informal Breakfast meeting students and young professionals will have an opportunity to hear two senior family professionals discuss the preparation and importance of resume and vita for academic and non-academic positions. Handouts with valuable tips on preparing resumes and vita will be available, and there will be time for discussion.

Don't forget to attend the Student/Young Professional party and dance. This is always a popular and fun event.

For more information on the program, contact Pam Monroe, LA House of Representatives, Governmental Affairs Division, PO Box 44486, Baton Rouge, LA 70804.

## AHEA sells abstracts

The 1987 AHEA Annual Meeting Research Abstracts will be available from Meridian Education Corporation.

These are abstracts of research received in response to a call for abstracts by the Research Section of AHEA and selected after peer review for presentation or poster session at the AHEA Annual Meeting in June in Indianapolis.

Send \$12.00 per copy plus \$2.00 for shipping and handling (total \$14.00) to Meridian Education Corp., 205 E. Locust St., Bloomington, IL, 61701. Checks should be payable to Meridian Education Corp.

## PBS special

"Degrassi Junior High", a coming series special on PBS, will begin broadcasts in September.

The programs offer teens views of topics of significance to them--dating, peer pressure, friendship, drugs and alcohol, sexuality, gossip.

A production of Playing with Time, Inc., and Taylor Productions, funding is by the Corporation for Public Broadcasting, public television stations, the Canadian Broadcasting Corp., and Telefilm, Canada. It is presented on public television by WGBH-Boston.

For more information contact WGBH Educational Foundation, Degrassi Junior High Project, 125 Western Ave., Boston, MA 02134; 617-492-2777 ext. 3848.

STUDENT INTEREST QUESTIONNAIRE	
Name _____	School Affiliation _____
Address _____	
Telephone Number: (Office) _____ (Home) _____	
Are you planning to attend the 1987 NCFR Annual Conference in Atlanta? _____ Yes _____ No	
If Yes, complete questionnaire and return to Pam Monroe (address below). If No, send Pam your ideas for future programs.	
Would you like to participate in the 1987 program? If so, indicate 1st, 2nd and 3rd choices:	
_____ Discussant for session of program (area _____)	
_____ Session Chair (area _____)	
_____ Annual conference student volunteer (8 hours in return for free conference registration)	
_____ Helping with student-sponsored party	
_____ Skills Exchange	
_____ Student/Young Professional Representative (Sections, Committees, Board of Directors, etc.)	
_____ Other _____	
Return questionnaire (at once) to:	
Pam Monroe Louisiana House of Representatives Governmental Affairs Division P.O. Box 44486 Baton Rouge, LA 70804	



# 'Tips' for presentations

Throughout the week of the NCFR Annual Conference, several hundred papers, symposia, workshops, carousel seminars (round tables), and posters will be presented, and between 500 to 600 individuals will be involved in the program. The following article, submitted by Jennie Barr, is being reproduced for the enjoyment of those who will be presenting papers:

- \*Read it word for word from single-spaced typed pages - otherwise it won't be precise enough.
- \*Give all the minutiae of procedure in great and exhaustive detail - even if you run out of allotted time before you get to your results.
- \*Never time your presentation in advance or run through a practice session, because there is a certain magic that will make everything turn out all right.
- \*Fill up all your allotted time, and ignore cutoff signals from the chairperson. Keep talking until you are physically removed from the podium.
- \*If, by remote chance, there is time for discussion, assume that all questions and comments are designed to cut you down - so respond defensively.
- \*The proper time to think about visual aids is about three days before the meeting. Take some quickie photos of typed tables, or better still, draw some rough graphs, on ground glass slides in your hotel room the night before the

paper is to be given.

- \*To ensure minimum visibility of data, make extensive use of opaque projectors or viewgraphs, which adequately distort most graphic material and which usually project any tabular material dimly enough so that most of the audience can ignore it. Another useful device is to switch back and forth several times between 2 x 2 and opaque or viewgraph projectors - the confusion engendered will suitably distract most of the audience so that your train of development (if any) will be totally lost to them.

- \*If you insist on preparing slides in advance, make sure that they are indecipherable. Tables should have tiny printing and at least thirty lines of numbers to ensure maximum invisibility of data - freeing you from the likelihood of challenge. Be sure to have tables photographed in dim light, slightly out of focus, so that the entire mess is fuzzy. Then leave the slide on the screen for a very short period, to thwart the eager types with excellent vision who may be seated near the front of the meeting room. Still another ploy, if you have not prepared slides at all, is to claim that they have been lost or damaged in the mail, or promised by a junior author but not delivered. This gives you an opportunity to scribble illegibly on a blackboard if one is

available in the meeting room, or to complain about its absence if one is not available.

- \*When you present the paper, act genuinely uninterested in the data and the audience; never, never give an indication of enthusiasm for your research; speak in a low monotone without pitch variation; and move away from the microphone whenever possible.

- \*If your paper is given in the late morning or afternoon, make sure that you start your presentation with a slide, and keep the room moderately to totally dark during the entire paper, with slides interspersed throughout. Many members of the audience will appreciate the opportunity to slip out of the room or to indulge in a short nap, and you will be reasonably free from unwelcome questions or comments when the last slide is shown and your paper ends simultaneously.

Happy preparation time to all this year's presenters! We're looking forward to your session.

# Marketing workshop planned

A two-part workshop on "Marketing Strategies for Family Programs," will be held Monday night, November 16 and Tuesday morning, November 17 during the conference in Atlanta.

The workshop includes a presentation of the basic principles of marketing as they apply to the development and delivery of family programs. Strategies will be developed and applied to the analysis of needs, segmentation, program development, pricing and promotion of family programs.

Workshop leader, Dr. Nelson Rosenbaum, is a graduate of Princeton and Harvard and president of CRG Research Institute and its parent organization, Center for Responsive Governance, in Washington, D.C.

Rosenbaum has been involved in research and training on the management of non-profit organizations for the last 10 years. He has written many articles and books on the topic of entrepreneurship and earned income in the voluntary sector. His latest book is **The State of the Voluntary Sector**, (CRG Press, forthcoming).

Rosenbaum is a member of the Board of the National Center for Charitable Statistics and the Advisory Committee of the National Association Fund Raising Council.

The workshop will be sponsored by Aid Association for Lutherans of Appleton, WI.

To Join  
NCFR  
call  
612-633-6933

## Child Care Form

Child care for infants and children up to 10 years of age will be available at the 1987 annual conference.

Care will be provided by a licensed child care service from 8 a.m. to noon and 1 to 5 p.m., Monday, November 16 through Friday, November 20.

Cost will be \$4.00 per hour per child. If you plan to use the service, complete the form below. Prepayments must accompany the registration form to reserve a slot.

Remember to return the form by September 15, 1987, to Cindy Winter at NCFR headquarters.

### Child Care Registration Form

1987 Annual Meeting

Return by September 15, 1987

Name of Parent(s) \_\_\_\_\_ Phone # (\_\_\_\_) \_\_\_\_\_  
 Name of Child \_\_\_\_\_ Age of Child \_\_\_\_\_  
 \_\_\_\_\_ Age of Child \_\_\_\_\_  
 \_\_\_\_\_ Age of Child \_\_\_\_\_

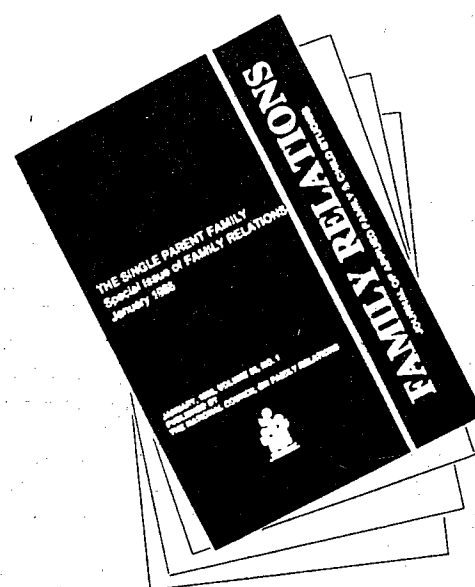
I need child care for:

_____ Monday, Nov. 16	_____ Thursday, Nov. 19
_____ Hours needed	_____ Hours needed
_____ Tuesday, Nov. 17	_____ Friday, Nov. 20
_____ Hours needed	_____ Hours needed
_____ Wednesday, Nov. 18	
_____ Hours needed	_____ Total Hours

Enclosed is my prepayment for child care at \$4.00 per hour per child for child care services.

\$ \_\_\_\_\_ Total Enclosed

Return form to: Cindy Winter  
 NCFR  
 1910 W. County Road B, Suite 147  
 St. Paul, MN 55113



"... One of the major contributions of the decade to the literature on Single Parent Families. This should be a part of the library of every family specialist in America."

Jim Walters, Ph.D.  
 U. of Georgia

"Without a doubt single parent families are a growing, viable family form. Congratulations, NCFR, for taking leadership in validating through the research, theory and applications in this issue, the need to recognize the uniquenesses of these families."

Pauline Boss, Ph.D.  
 U. of Minnesota

This special issue brings together the most current research, theory, and clinical observations on single parents and their children. It includes a range of topics on: legal, custody, health, financial and/or religious issues; children of single parents; never-married, widowed or divorced parents, parent-child relations, and more.

Call (612) 633-6933 to place your order by phone.

Yes, I Want to Take Advantage of This Offer

Please send me \_\_\_\_\_ copies of **Single Parent Family**, edited by Shirley Hanson and M. Michael Sporakowski.

Members: \$13.00 Non Members: \$15.00

\_\_\_\_\_ My check for \$ \_\_\_\_\_ is enclosed, including \$2.50 for postage/handling.

\_\_\_\_\_ Bill me. Add \$5.00 for postage/handling.

Name \_\_\_\_\_  
 Street \_\_\_\_\_  
 City \_\_\_\_\_ State/Province \_\_\_\_\_ Zip/Postal \_\_\_\_\_  
 Phone (\_\_\_\_) \_\_\_\_\_

National Council on Family Relations, 1910 West County Road B, Suite 147, St. Paul, MN 55113. Phone: (612) 633-6933



## Dickey House

This year's NCFR conference attendees may opt for a trip to the Dickey House, located in the 19-building Antebellum Plantation complex at Georgia's Stone Mountain Park. The 3,200 acre facility is only 16 miles from Atlanta. Photo by the Atlanta Convention and Visitors Bureau.

## Member named Distinguished Professor

The title Distinguished Professor recently was conferred on NCFR member Dr. Vern L. Bullough, dean of the Faculty of Natural and Social Sciences at Buffalo State College, by the State University of New York. To receive this recognition, a person must have achieved national or international prominence and a distinguished reputation within his or her chosen field through significant contributions to the research literature or through artistic performance or achievement.

Author of many books, articles, and papers on medicine, nursing, and various aspects of sex and sexuality, Dean Bullough came to Buffalo State in 1980 from CA State University at Northridge where he was a professor and the founder and director of the Center for Sex Research. Soon after his arrival in Buffalo, he was licensed as a registered nurse, making him twice co-equal with his wife, Dr. Bonnie Bullough, also a licensed nurse and the dean of the University at Buffalo School of Nursing.

Dr. Bullough, a graduate of the University of Utah with master's and doctoral degrees from the University of Chicago, was recognized in 1960 as an Outstanding Professor among those teaching in California State Universities and Colleges. In 1978 he also received the California State University President's Award.

With the recent announcement, he becomes the third person in the history of Buffalo State to join SUNY's most select group of educators. The first was the late Dr. Harold F. Peterson, professor of history, who was chosen in 1973, and the second, Dr. Irene M. Hulicka, professor of psychology, whose

recognition came in 1983.

Nominees for Distinguished Professor are evaluated on the basis of their work being of "such a character that his or her presence will tend to elevate the standards of scholarship of colleagues both within the academic field and beyond" and of "such quality that students and scholars on other campuses of the university (SUNY) could wish to benefit by lectures and seminars or other appropriate presentations."

After moving to the Buffalo area, Dean Bullough helped found and became the first president of the New York Association of Professionals Working in Human Sexuality. He also served as president of the National Society for the Scientific Study of Sex, which publishes the *Journal of Sex Research*, of which he is associate editor.

The Bulloughs, both singly and in collaboration, have written more than three dozen books. Recently an updated version of their *Women and Prostitution*, published in hardcover

## NCFR members comment on recent survey results

Results of the State of the American Home survey, a comprehensive, national study of topics ranging from home care to family activities, aspirations and values were released in March at the Drake Hotel in New York.

Representing NCFR at the meeting was Sheila Sussman of the NY Council on Family Relations.

## Theory and research pre-conference open

Registration remains open for the 17th annual pre-conference workshop on theory construction and research methodology to be held on Saturday and Sunday, November 14 and 15, 1987, at the Westin Peachtree Plaza Hotel in Atlanta, GA. All registrants will receive copies of the papers prior to the workshop. To register, send a check for \$20 to Walter Schumm, Justin Hall, Department of Human Development and Family Studies, Kansas State University, Manhattan, KS 66506.

This year, submissions for an experimental session to feature late breaking "research in progress" papers will be considered between June 1 and September 15; please see the annual newsletter for details. If you were not one of the 800 individuals on the mailing list who received the annual pre-conference newsletter this spring and if you would like to be sent a copy, please send a letter or postcard to the Chair. Furthermore, if you are interested in making some sort of contribution to the Contemporary Family Theory Project and have not yet contacted the Chair, please send your name, address, vita, relevant written materials and an explanation of your potential

contributions to the Chair, who forward them to the chair of the plan committee (not yet named as of 4/23). My thanks to all of you who submitted papers this year and/or volunteered to serve as presiders, discussants, as well as to the large number of early registrants!

After a careful peer review, following papers have been accepted for the 1987 pre-conference workshop (titles have been abbreviated to save space):

"Twenty-five Years Later, the Legend of Hill and Hansen," Sarah Ren Phillips and Keith Farrington (session A); "A Continuation of Program of a Phenomenological Sociology of the Family," Dona Swenson (session A); "The Conflict Tactics Scales," Murray Straus (session B); "Family Stress and Crisis Theory," Roy Rodgers (session C); "Time and Space Constraints in Everyday Routines," Mary Cann (session C); "Norms, Power, and Aggression," Maximilian Szinovacz (session D); "Linking Family Theory and Reality: A Bridge That Never Was," Jetse Sprey (session E); "Do Our Causal Models in Family Research Reflect Reality? Deborah Godwin (session E);

"A Theory of Problem Solving Applied to Families," Irving Tallman and Louis Gray (session F); "Arriving at a Method to Determine Phases of Family Problem Solving," Diana Kieren and Nancy Hurlbut (session F); "Objectivity in Feminist and Family Science," Linda Thompson (session G); "Application of Socialist Feminist Theory to Family Policy Development," Patricia Spakes (session G); "Qualitative Family Research," Katherine Allen and Jane Gilgun (session H);

"New Developments in Love Style Research," Keith Davis (session I); "A Developmental Model of Family Relationships," Jack Balswick and Cameron Lee (session I); "Implications of Post-Positivism for Theory-Method-Data Relationship in Family Studies," Joan Jurich (session J); "Interpersonal Perception in Families: A Review," Lyle Larson (session K); Special Session for "Progress Research" Papers (session L); "Saving the Family System Perspective," Jason Montgomery (session M);

"On the limits of Variation in Family Systems," Larry Constantine (session M); "Family Development and Change: a Family FIRO Model," William Doherty (session N); "Family of Origin Influences on Marital Selection," Frederick Wamboldt (session O); "Social Learning Theory as a Basis for Conceptualizing Intergenerational Family Relationships," Paula Dail and Leland Axelson (session O);

"Family Systems Theory," Wesley Burr (session P); "Robustness and Best Fit of Statistically-based Models," Suzanne Steinmetz (session Q); "Premarital Sexual Intercourse Among Females: Axiomatic Theory," J. Kenneth Davidson (session R); Walter Schumm, Chair Theory Construction and Research Methodology Pre-conference Workshop

in 1979, has been reissued in paperback by Prometheus Books, Inc. Among other ones Bullough has written are *Homosexuality: A History and Sexual Variance in Society and History*. He and his wife have co-authored *Sin, Sickness and Sanity: A History of Sexual Attitudes and Care of the Sick: The Emergence of Modern Nursing*, among many.

International attention has been given to Bullough's research into the disproportionate number of men to women in some societies. He discovered that the women seldom ate meat, were anemic and susceptible to infections, and often bled to death. However, where iron pots were used for cooking, more women survived.

Also, questioning the idea that girls are maturing younger and younger, he has been able to demonstrate that the age of menarche remains consistent at 13 or 14 and that the false idea resulted from a misreading of historical data.

Commenting on the results was NCFR member Dr. M. Janis Hogan, Family Social Science, University of MN, and chair of the Family Economics and Home Management Committee of the American Home Economics Association.

The survey was sponsored by Johnson Wax of Racine, WI.

## FRD report

# Search topic: Rural black families

The past two months we received search contest requests for information about art and family therapy, employed caregivers, phenomenological studies on the experience of work, common family values shared by different religions, characteristics of the American family, Black rural families, and gay fathers. We found citations about each of the above topics in the Family Resources Database.

One particularly timely request was made by Suzanna Smith of the Department of Child and Family Development at the University of Georgia. Ms. Smith is interested in

rural Black families, specifically family structures, kinship relationship and organization, economic relationships, and socialization. She also specified the inclusion of journal articles and books published since 1970.

Because we expected a limited number of items for this search, we used the general terms rather than include specific terms like: kinship, family structures, etc. The search syntax was as follows: (rural or farm\$ or small with town or extension) and (black or minority\$). This search yielded 58 documents and 16 are included here.

These 16 citations are just a sample, and the fields printed are limited to author, title, source and year, due to space limitations. If you need more information on a citation or other citations not included in this sample, please contact your library or search the database directly through BRS, DIALOG, or ETSI.

You can access the Family Resources Database (FRD) with the assistance of librarians in your local library. Or, you may access FRD directly with a computer terminal or personal computer connected to a modem. The FRD itself is available from three different companies: BRS Information Technologies, DIALOG Information Services, and Executive Telecom System, Inc. (ETSI). They all have identical copies of the database. You can choose which of these companies you will use. NCFR headquarters has an information packet telling how you can register to gain direct access to the FRD.

Your request could be the next winner! Just fill out and clip the request form and return it to headquarters. The purpose of this search contest is to familiarize our readers with the Family Resources Database and to show how the database can meet your information needs.

Rocky Ralebipi and  
Craig Roberts

Simon, A. (1986). Black students' perceptions of factors related to academic performance in a rural area of Natal Province, South Africa. *Journal of Negro Education*, 55, 535-547.

Peterson, G. W., Stivers, M. E., & Peters, D.F. (1986). Family versus nonfamily significant others for the career decisions of low-income youth. *Family Relations*, 35, 417-424.

Ward, W. E. (1986). Comment on Brown et al's "Locus of control, sex role orientation, and self-concept in black and white third- and sixth- grade male and female leaders in a rural community". *Developmental Psychology*, 22, 95-96.

Coleman, P. P. (1986). Separation and autonomy: Issues of adolescent identity

development among the families of black male status offenders. *American Journal of Social Psychiatry*, 6, 43-49.

Gaudin, J. M., & Davis, K. B. (1985). Social networks of black and white rural families: A research report. *Journal of Marriage and the Family*, 47, 1015-1021.

Burton, O. V. (1985). In my father's house are many mansions: Family and community in Edgefield, South Carolina. Chapel Hill, NC: Univ of NC Press.

Peterson, G. W., & Peters, D. F. (1985). The socialization values of low-income Appalachian white and rural black mothers - a comparative study. *Journal of Comparative Family Studies*, 16, 75-92.

Lee, C. C. (1985). Successful rural black adolescents: A psychosocial profile. *Adolescence*, 20, 129-142.

Jones, J. (1981). A bridge of "Bent backs and laboring muscles": Black working women in the rural south, 1880-1915. Wellesley, MA: Center for Research on Women, Wellesley College.

Dillman, D. A., & Hobbs, D. J. (Eds.). (1982). Rural society in the U.S.: Issues for the 1980s. Boulder, CO: Westview Press.

Kenkel, W. F. (1981). Factors affecting the life plans of low-income rural youth. ERIC Document Reproduction Service No. ED200371.

Martin, E. P., & Martin, J. M. (1978). The black extended family. Chicago, IL: Univ of Chicago Press.

Murari, T. (1980). Goin' home: A black family returns south. New York: G.P. Putnam's Sons.

Reiff, J. L., Dahlin, M. R., & Smith, D. S. (1983). Rural push and urban pull: Work and family experiences of older black women in southern cities. *Journal of Social History*, 16, 39.

Shifflett, C. A. (1975). The household of composition of rural black families: Louisa County, Virginia, 1880. *Journal of Interdisciplinary History*, 6, 235-260.

Scott, J., & Kivett, V. (1980). The widowed, black, older adult in the rural south: Implications for policy. *Family Relations*, 29, 83-90.

## John McAdoo honored by dyslexia institute

John McAdoo, Ph.D., recently was honored by the TRI-Services National Institute of Dyslexia with the Margaret Byrd Rawson achievement prize given annually to dyslexic adults for outstanding achievements.

McAdoo is a long-time NCFR member and has served on the Publications committee.

According to an article by Dorothy Gilliam that appeared in the May 11 *Washington Post*, McAdoo noted that evening, "In the past, I had always sought to keep it a secret. I was afraid that people would see me as abnormal and not accept me. This is the first time I have identified myself publicly as being learning disabled."

McAdoo, first black recipient of the Margaret Byrd Rawson award, is an authority on the family and an associate professor at the University of MD School of Social Work in Baltimore.

The award carried great meaning for McAdoo: "By saying this in public...it's saying that in spite of this you can still be somebody."

McAdoo grew up in Detroit, MI, and was placed in a class for mentally retarded students because he could not read. In the Gilliam article, he explained, "I memorized the Dick and Jane books. But my eye did not report back to my brain some of the words correctly. I had poor hand and eye coordination. I would jump whole lines and paragraphs. I was verbal and articulate, but these other problems were aggravating to teachers who didn't understand."

However, through the patience of the special education teacher, (who recognized that McAdoo was not retarded), McAdoo learned to read. Then the teacher insisted that the school system re-test him and put him back into the regular classroom. His reading test scores improved each year after fourth grade.

McAdoo's mother was a strong force in his life. Although she became paralyzed when he was seven years old, she was determined to raise her children. She encouraged McAdoo do his best. "She could sense when I was down, and she would sing and tell me stories or send me to the store to buy her a murder mystery. I never came back with the same book twice," McAdoo said. McAdoo's father worked two jobs to care

for the family and to pay his wife's hospital bills.

Some experts say that because of poverty and inadequate education, blacks are less likely to be diagnosed properly when they are dyslexic or to get the appropriate educational intervention once a determination has been made. While McAdoo has no statistical proof, he suspects that dyslexia, which is more common in men, is a culprit in the disproportionately high dropout and incarceration rates in black men.

"I would have probably ended up in jail if it hadn't been for so many people...who helped me along the way," he said. "It was tempting to get in trouble. It may well be (that) the only thing that saved me was that I had people who cared."

"But if you're black, poor and you don't have somebody to say none of this has anything to do with you, it's nearly impossible."

McAdoo received a bachelor's degree from Eastern MI University and a master's in social work and a doctorate in educational psychology from the University of MI.

He and his wife, Harriette, also a university professor, have four children. Each of their three sons inherited some elements of dyslexia. Two of the sons and the McAdoo's daughter either attend college or are recent graduates.

The youngest son attends the private Lab School of Washington. Since moving to the District a few years ago, McAdoo said he found the city's facilities for working with dyslexic children deficient. "Our son was almost prevented from getting the services he needed by bureaucratic inefficiency and negligence."

McAdoo's hard work and persistence against his learning disability has paid off in many ways, but he feels especially good about the second part of the award from TRI-Services National Institute of Dyslexia: A full scholarship in his name that will enable one minority child each year to attend the Institute.

To date, 13 children have applied for the honor.

### FAMILY RESOURCES DATABASE BIBLIOGRAPHY REQUEST

Name \_\_\_\_\_

Address \_\_\_\_\_

#### Specific Information Requested

Topic \_\_\_\_\_

Relevant key words \_\_\_\_\_

Scope \_\_\_\_\_

Type of document(s) \_\_\_\_\_

Publication year(s) \_\_\_\_\_

Mail to: Family Resources Database  
Bibliography Request  
NCFR  
1910 W. Co. Rd. B, Suite 147  
St. Paul, MN 55113



# Meetings

## Lake Tahoe, CA

The Association for the Behavioral Sciences and Medical Education will present a symposium devoted to explore "Behavioral Science and Chronic Illness," October 18 through 21 at Stanford Alumni Lodge, Fallen Leaf Lake, S. Lake Tahoe, CA.

The program will address theoretical models of chronic illness, highlight new research and developments in illustrative chronic diseases and present teaching models and curricula on the behavioral dimension of chronic illness.

For more information contact James Campbell, University of MO-Columbia, 137 Clark Hall, Columbia, MO 65211.

## Los Angeles, CA Chicago, IL

Two sessions of "Teaching Adolescents About: Teen Pregnancy, AIDS, Self-esteem, and Sexual Abuse" will be held in Los Angeles, July 20 through 24; and in Chicago August 3-7.

The sessions are sponsored by ETR Associates fourth annual Family Life Education Institute.

For more information contact ETR Associates/Training Dept., P.O. Box 1830, Santa Cruz, CA 95061-1830; 408-429-9822.

## Oakland, CA

"Taking Humanistic Psychology into the Mainstream," is the theme of the 25th annual meeting of the Association of Humanistic Psychology at Mills College in Oakland, CA., August 5 through 9.

For more information contact AHP, P.O. Box 7226, Stanford, CA, 94305-0164; 415-851-8411.

## Atlanta, GA

The 30th annual meeting of the Society for the Scientific Study of Sex will be held in Atlanta, November 5-7, 1987, at the Westin Peachtree Plaza. The central theme for this meeting is "Three Decades of Sex Research and Beyond: Public Policy, Freedom of Inquiry, Scientific Advancements."

Specifically, the meeting will explore such issues as 1) how has public policy related to sexuality been developed and how will it be implemented in the future, 2) what impact exploring sexual issues has on freedom of inquiry, 3) what have the major scientific advancements been in the past three decades and what are the directions for the future. However, a wide range of topics, beyond those related to the theme, will be included in the program.

The Program Committee welcomes submissions of proposals and attendance by anyone interested in the field of sexuality. For a copy of the call for presentations or for a copy of the program, contact: Dr. Kenneth D. George, Chair, 1987 Annual Meeting, University of PA, 3700 Walnut, Philadelphia, PA 19104; or call 215-898-5195.

## Chicago, IL

"Family Therapy Works," is the theme of the American Association for

Marriage and Family Therapy, 45th annual conference, October 29 through November 1 in Chicago, IL. Presenters include Carol Anderson, Bob Beavers, Luigi Boscolo, Pauline Boss, Gianfranco Cecchin, Paul Dell, Fred Duhl, Ed Friedman, Michael Goldstein, Jo-Ann Krestan, Steve Lankton, Joseph LoPiccolo, Monica McGoldrick, Carl Whitaker, and Lyman Wynne.

Contact AAMFT Conference at 1717 K St., NW, No. 407, Washington, DC 20006; 202-429-1825.

## Overland Park, KS

"Who Decides?" is the theme of the eighth annual conference of the Central States Coalition on Aging, August 30 through September 1 at the Marriott Hotel in Overland Park.

Scheduled speakers include Paul Kerschner, National Foundation for American Health Care; Arthur Flemming, Citizen's Commission on Civil Rights; John McDonald, American Association for International Aging; Michael Reagan, MO Dept. of Social Services; and Don Daughette, American Association of Retired Persons.

For more information contact the Coalition at 11901 W. 148th St., Olathe, KS 66062.

## Ottawa, ONT, Canada

"Networking and New Perspectives," the 7th biennial Educational Symposium on Employee Assistance Programs in the Workplace, will be held October 25 through 28 at the Chateau Laurier Hotel.

Topics to be discussed include drug screening, women's issues, computers in record keeping, AIDS, family issues, chemical dependency and the adolescent, stress and burnout, cocaine update, legal issues, and models of assessment and referral.

For more information contact INPUT '87 Headquarters, Conference and Seminar Services, Humber College, 205 Humber College Blvd., Etobicoke, ONT, Canada M9W 5L7; 416-675-5077.

## Directory lists services

The Children of Alcoholics Foundation has published the first National Directory of Resources for Children of Alcoholics. Based on a national survey of services for children of alcoholics, the Directory contains essential information on 259 programs for adult and young children of alcoholics in 158 cities and 34 states.

For each program, the Directory provides a summary of the services available, ages served, admission criteria, fees, financial aid, and referral information. The Directory is intended for use by organizations and associations concerned with children, families, alcoholism and alcohol abuse and is designed as a tool for family service workers, physicians and other health professionals, alcohol and drug abuse counselors, probation officers, social workers and mental health workers.

The Directory can be ordered from the Children of Alcoholics Foundation, P.O. Box 4185, Grand Central Station, New York, NY, 10163. The total cost of the 158-page volume, including postage, is \$20.00.



## 1987 NCFR Annual Conference Program November 15-19, 1987 Westin Peachtree Plaza Hotel, Atlanta, Georgia

### Saturday, November 14, 1987

8:00 am --	ONGOING EVENTS State Council Hospitality Room Local Information
8:30 am to 5:00 pm	Theory Construction and Research Methodology Workshop
8:30 am to 3:30 pm	Association of Councils Leadership Training Workshop
9:00 am to 5:00 pm	Pre-Conference Workshop - "Responding to the AIDS Crisis"
12:00 pm to 4:00 pm	ANNUAL CONFERENCE REGISTRATION
3:45 pm to 5:15 pm	Association of Councils Annual Business Meeting
5:00 pm to 11:00 pm	1986-87 NCFR Board Meeting
8:00 pm to 9:30 pm	Theory Construction and Research Methodology Workshop Business Meeting
9:30 pm --	Theory Construction and Research Methodology Workshop Reception

### Sunday, November 15, 1987

8:00 am --	ONGOING EVENTS Annual Conference Registration State Council Hospitality Room Press Room Local Information Employment Service Media Exhibit
8:15 am to 9:00 am	Interdenominational Church Service Sponsored by the Religion and Family Life Section
9:15 am to 12:15 pm	1986-87 NCFR Board of Directors Meeting
8:30 am to 12:00 pm	Theory Construction and Research Methodology Workshop continued
9:15 am to 11:00 am	Section Meetings I Education and Enrichment Session A Education and Enrichment Session B Ethnic Minorities Session A Family Action Session A Family Therapy Session A Family Therapy Session B Feminism and Family Studies Session A

Conference schedule continued on page

## Short's talk makes difference

NCFR member Dr. Ray E. Short, professor of sociology at the University of WI-Platteville, recently released survey results from a Wisconsin high school concerning pre-marital sexual activity.

Several days before Short was to present his message on "Love or Infatuation," to the high school students, they were asked, "In view of all the arguments for and against pre-marital sex, do you think sexual intercourse before is: very wise, wise, undecided, unwise, very unwise?"

The survey results indicated that 11 percent thought it very wise, 29 percent, wise; 40 percent undecided; 12 percent, unwise; and 8 percent very unwise.

Several days after Short's presentation, the same students were surveyed, using the same survey

questions, but the results were quite different:

Only 2 percent answered, very wise; 6 percent, wise; 38 percent, undecided; 45 percent, unwise; and 9 percent, very unwise.

Dr. Short is the author of *Love or Infatuation: How Can We Really Know?*, is cited in *American Men and Women of Science*, *Who's Who in America* and *Who's Who in the World*. He is married and the father of five children.

Short also is an ordained minister, chaired the Peace division in IA and United Methodist Conferences, and was a candidate for U.S. Congress in 1970 and 1972. He is vice-chair of the Governor's Commission on the UN and on the National Board of the Federalists Association.



Family Action Session A  
 Family Discipline Session A  
 Family and Health Session A  
 Family and Health Session B  
 Family Therapy Session A  
 Family Therapy Session B  
 Religion and Family Life Session A  
 Research and Theory Session A  
 Research and Theory Session B

12:30 pm to 2:00 pm **First-Timers Reception sponsored by the NCFR Board of Directors**

1:00 pm to 2:45 pm **Poster Session**  
 Education and Enrichment Section  
 Ethnic Minorities Section  
 Feminism and Family Studies Section

1:00 pm to 2:45 pm **Section Meetings II**  
 Family Action Session A  
 Family Therapy Session A  
 Research and Theory Session A  
 Research and Theory Session B

1:15 pm to 2:45 pm **FAMILY RESOURCES DATABASE DEMONSTRATION WORKSHOP**

2:00 pm to 2:45 pm **INFORMATION MEETING - NCFR FAMILY LIFE EDUCATOR CERTIFICATION: PROCESS AND CONTENT**

3:00 pm to 4:45 pm **Opening Plenary Session Sponsored by the Education and Enrichment Section**  
 Address: "Education's Most Vital Component: Families," **Richard Berendzen**, President, American University

5:00 pm -- **Opening Conference Reception Sponsored by the Georgia and Southeastern Councils on Family Relations**

5:30 pm to 7:30 pm **FAMILY DISCIPLINE SECTION ETHICS COMMITTEE MEETING**

6:00 pm to 7:30 pm **FOCUS GROUP MEETINGS**  
 Rural Families  
 Single Parent  
 Sexuality and the Family

7:30 pm to 9:00 pm **Plenary Session Sponsored by the NCFR Task Force on AIDS**  
 Special Plenary Session on "Responding to the AIDS Crisis," **James Curran**, Head, AIDS Research, Center for Disease Control, Atlanta

5:00 pm to 6:00 pm **Master Lecture Sponsored by the Research and Theory Section**  
 Address: "Gender and Parent-Adult Relations in a Life Course Program," **Alice Rossi**, Author and Professor, University of Massachusetts

6:00 pm -- **NETWORKING: NCFR CERTIFIED FAMILY LIFE EDUCATORS GATHERING**

6:00 pm -- **VIRGINIA COUNCIL ON FAMILY RELATIONS MEETING**

6:15 pm to 7:45 pm **FOCUS GROUP MEETINGS**  
 Middle Years  
 Remarriage and Stepfamilies  
 Family and Nursing

6:30 pm -- **OPTIONAL TOUR**

6:30 pm -- **"NO HOST NETWORKING DINNERS"**

7:15 pm to 8:45 pm **SPECIAL SESSION**  
 "Tips for Publishing in the Family Relations Journal," **Timothy Brubaker**

7:15 pm to 9:15 pm **Workshop sponsored by Aid Association for Lutherans**  
 "Marketing Strategies for Family Programs," **Nelson Rosenbaum**, president, Center for Responsive Governance Research Institute, Washington, D.C.

7:15 pm to 9:15 pm **FAMILY DISCIPLINE SECTION BUSINESS MEETING**

7:15 pm to 9:15 pm **Student Skills Exchange**  
 "Academic and Non-Academic Career Options for Students and Young Professionals"

9:00 pm -- **OPEN HOUSES**

9:00 pm -- **FAMILY THERAPY SECTION EXECUTIVE COMMITTEE MEETING**

**Monday, November 16, 1987**

8:00 am -- **ONGOING EVENTS**  
 Annual Conference Registration  
 State Council Hospitality Room  
 Press Room  
 Local Information  
 Employment Service  
 Media Exhibit

8:30 am to 10:30 am **Section Meetings III**  
 Education and Enrichment Session A  
 Ethnic Minorities Session A  
 Family Action Session A  
 Family Action Session B  
 Family and Health Session A  
 Family Therapy Session A  
 Family Therapy Session B  
 International Session A  
 Research and Theory Session A  
 Research and Theory Session B

10:45 am to 12:15 pm **Plenary Session sponsored by the Religion and Family Life Section**  
 Address: "Statistical Literacy and the Electronic Information-Structure Serving America's Families in a Decade of Revolution and Change," **David Pearce Snyder**, Social Forecaster, Life-Styles Editor, *The Futurist Magazine*

12:15 pm to 2:00 pm **Grand Opening of Exhibits**

2:00 pm to 3:00 pm **Evelyn Duvall Master Lecture Sponsored by the University of Southern Florida**  
 Address: "Family Development's First Forty Years," **Evelyn Duvall**, Consultant, Sarasota, Florida

3:15 pm to 5:00 pm **Section Meetings IV**  
 Education and Enrichment Session A

**Tuesday, November 17, 1987**

7:00 am to 8:30 am **Informal Breakfast Meeting of Students/Young Professionals**

7:30 am to 8:30 am **FEMINISM AND FAMILY STUDIES SECTION BUSINESS MEETING**

7:30 am to 8:30 am **EDUCATION AND ENRICHMENT SECTION BUSINESS MEETING**

8:00 am -- **ONGOING EVENTS**  
 Annual Conference Registration  
 State Council Hospitality Room  
 Press Room  
 Local Information  
 Employment Service  
 Media Exhibit

8:30 am to 10:30 am **Workshop sponsored by Aid Association for Lutherans**  
 "Marketing Strategies for Family Programs," **Nelson Rosenbaum**

8:30 am to 10:00 am **CAROUSEL SEMINARS Sponsored by Sections**

9:15 am to 10:00 am **INFORMATION MEETING - NCFR FAMILY LIFE EDUCATOR CERTIFICATION: PROCESS AND CONTENT**

10:00 am to 10:45 am **EXHIBITS BREAK**

10:45 am to 12:15 pm **Plenary Session Sponsored by the Family Action Section**  
 "Advances in Medical Technology: A Challenge to the Family," **Susan Wolf**, Associate for Law, Hastings Center, White Plains, NY

continued  
from page 19



12:15 pm to 1:15 pm	RESEARCH AND THEORY SECTION BUSINESS MEETING
12:15 pm to 1:15 pm	Poster Session Family Action Section Family Therapy Section
1:30 pm to 3:15 pm	Section Meetings V Education and Enrichment Session A Family Action Session A Family and Health Session A Family and Health Session B Family Therapy Session A Feminism and Family Studies Session A International Session A Religion and Family Life Session A Research and Theory Session A Research and Theory Session B
3:30 pm to 4:30 pm	NCFR Presidential Address
4:30 pm to 6:00 pm	Presidential Reception/Meet the Authors
6:00 pm to 7:30 pm	FOCUS GROUP MEETINGS Peace and the Family Family Centers Qualitative Family Research
6:00 pm to 7:15 pm	SPECIAL SESSION "The Gary Hart Phenomenon: Implications for Family Life Professionals," Matti Gershenfeld
7:45 pm to 10:30 pm	Fund Raiser Special Event
<b>Wednesday, November 18, 1987</b>	
7:30 am to 9:30 am	Association of Councils Workshop
7:30 am to 8:30 am	RELIGION AND FAMILY LIFE SECTION BUSINESS MEETING
7:30 am to 8:30 am	FAMILY AND HEALTH SECTION BUSINESS MEETING
8:00 AM --	ONGOING EVENTS Annual Conference Registration State Council Hospitality Room Press Room Local Information Employment Service Media Exhibit
8:30 am to 10:00 am	Section Meetings VI Education and Enrichment Session A Ethnic Minorities Session A Family Action Session A Family and Health Session A Family and Health Session B Family Therapy Session A International Session A Religion and Family Life Session A Research and Theory Session A Research and Theory Session B
10:00 am to 10:45 am	EXHIBITS BREAK
10:45 am to 12:15 pm	Invited Carousel Seminars
10:45 am to 12:00 pm	Burgess Award Address Address: Mirra Komarovsky, Emeritus, Barnard College, Columbia University
12:00 pm to 1:30 pm	Section Meetings VII Education and Enrichment Session A Family and Health Session A Feminism and Family Studies Session A Research and Theory Session A Research and Theory Session B
12:00 pm to 1:30 pm	Poster Session Family Discipline International Section Research and Theory Section
12:15 pm to 1:15 pm	FAMILY THERAPY SECTION BUSINESS MEETING

1:30 pm to 3:15 pm

#### Section Meetings VIII

Education and Enrichment Session A  
Ethnic Minorities Session A  
Family Action Session A  
Family and Health Session A  
Family Discipline Session A  
Family Therapy Session A  
International Session A  
Religion and Family Life Session A  
Research and Theory Session A  
Research and Theory Session B

3:30 pm to 4:30 pm

#### Master Lecture sponsored by the Religion and Family Life Section

Address: "The Family as Ecology of Selfhood and Faith," James Fowler, Director, Center for Faith Development, Chandler School of Theology, Emory University

4:30 pm to 5:30 pm

#### Closing of Exhibits

5:30 pm to 6:30 pm

#### ANNUAL NCFR BUSINESS MEETING

6:00 pm --

#### "NO-HOST NETWORKING DINNERS"

7:00 pm --

#### FOCUS GROUPS AND MISCELLANEOUS MEETINGS Adoption

7:00 pm to 8:30 pm

#### SPECIAL SESSION

"Publishing in Family Journals: Especially for People who have not yet Published in the *Journal of Marriage and the Family* and the *Journal of Family Issues* but Would Like to Do So (or Do So More Often)," Alan Booth, Gay Kitson, and Norval Glenn

7:00 pm to 9:00 pm

#### FAMILY DISCIPLINE SECTION MEETING ON TEEN PREGNANCY

7:30 pm to 8:30 pm

#### ETHNIC MINORITIES SECTION BUSINESS MEETING

8:30 pm to 10:00 pm

#### Ethnic Minorities Section Oral History

9:00 pm --

#### Student Sponsored Party and Dance

#### Thursday, November 19, 1987

7:30 am to 8:30 am

#### Poster Session

Family and Health Section  
Religion and Family Life Section

#### FAMILY ACTION SECTION BUSINESS MEETING

8:00 am --

#### ONGOING EVENTS

Annual Conference Registration  
State Council Hospitality Room  
Press Room  
Local Information  
Employment Service

8:30 am to 10:15 am

#### Section Meetings IX

Education and Enrichment Session A  
Ethnic Minorities Session A  
Family Action Session A  
Family and Health Session A  
Family Therapy Session A  
Family Therapy Session B  
International Session A  
Religion and Family Life Session A  
Research and Theory Session A  
Research and Theory Session B

10:30 am to 12:00 pm

#### Closing Plenary sponsored by the Association of Councils

Address: "In a Technological Society Credibility Begins at Home," Charles Petty, Family Humorist, President, Family Success Unlimited, Raleigh, NC

12:00 pm to 1:15 pm

#### ORIENTATION MEETING FOR NEW MEMBERS OF THE 1987-88 BOARD OF DIRECTORS

1:30 pm to 3:30 pm

#### 1987-88 NCFR BOARD OF DIRECTORS MEETING

1:00 pm --

#### POST CONFERENCE WORKSHOP "Children of Military Families"

#### Friday, November 20, 1987

All Day --

#### POST CONFERENCE WORKSHOP "Children of Military Families"