

NEWSLETTER

NATIONAL COUNCIL ON FAMILY RELATIONS

Volume 25, No. 3

Ruth H. Jewson, Editor

August 1980

NCFR ANNUAL MEETING

ANNUAL MEETING HIGHLIGHTS NCFR'S YEAR

October 22-25, 1980

Portland Hilton Hotel, Portland, Oregon

Theme: *"The Quality of Family Life:
Integrating Theory, Research and Application"*

The most important professional event of the year for people concerned about families will take place in October. This is of course, the NCFR Annual Meeting; and readers of this Newsletter will note the creative program planning of *Wesley Burr* and his committee. The Local Arrangements Committee has been equally diligent in planning for your pleasure, as you will see when you read about the Reception, the President's Party, and the scenic fall tour. The Alumni Celebration is noted on page 12. In addition, special pre- and post-conferences are described on pages 8-11.

We invite you to attend the 1980 Annual Meeting. Registration materials and a hotel form are enclosed. Plan to register by **September 30** to obtain a discount on your registration fee. Registration at the Annual Meeting will begin on Tuesday, October 21, 7:30 p.m.

The Plenary Sessions this year include the following:

"Launching a National Family Perspective," *John A. Calhoun*, Commissioner, Administration for Children, Youth, and Families, Department of Health and Human Services.

"Decade Preview: The Family Field and the 1980's." Presenters and Panelists: *Reuben Hill*, University of Minnesota; *Greer Litton Fox*, Wayne State University; *Felix Berardo*, University of Florida; *Jacqueline Wiseman*, University of California-San Diego. Presiding and Moderating: *Joan Aldous*, University of Notre Dame.

"Marriages in Crisis: A Systems Perspective on Treatment and Prevention," *Augustus Y. Napier*, Alliance for Counseling and Therapeutic Services, Atlanta, Georgia.

Burgess Award Address, *Glen Elder*, Cornell University, 1979 Burgess Award recipient.

NCFR Presidential Address, "Ideology and Sexuality," *Ira L. Reiss*, University of Minnesota, NCFR President.

The Ecology of Families with Young Children: "Environmental Stresses and Supports in Parent-Child Activities," *Urie Bronfenbrenner*, Schurman Professor of Human Development and Family Studies, and Psychology, Cornell University; "Informal Support Systems," *Moncrieff Cochran*, Cornell University.

PROGRAM

WEDNESDAY, OCTOBER 22, 1980

3:00 p.m. to 5:00 p.m.

ROUND TABLE COFFEES

(Please see the enclosed round table sheet for list of topics and instructions for registering. Round tables are limited to 10 persons and require advance registration.)

3:00 p.m. to 5:00 p.m.

DIDACTIC SESSION

(This is an in-service training session that will deal with using demographic data such as the 1980 Census and Population Surveys. Issues such as computer applications, problems and pitfalls, where to turn for help, and how to locate data will be covered.)

"Family Demography," *Graham B. Spanier*, Pennsylvania State University, and *Arthur Norton*, U.S. Bureau of the Census, Washington, D.C.

5:30 p.m. to 7:15 p.m.

RECEPTION FOR CONFERENCE DELEGATES

(Delegates may meet to make new friendships and renew old ones.)

Co-chairs: *Mary Cramer*, *Shari Davis*, and *June Henton*, Oregon State University

7:30 p.m. to 9:30 p.m.

OPENING PLENARY SESSION

(This session is co-sponsored by the Affiliated Councils and the Family Action Section. The address will focus on possibilities in the post-White House Conference era, followed by a dialogue.)

Welcome: *Ira L. Reiss*, University of Minnesota, NCFR President

Address: "Launching a National Family Perspective," *John A. Calhoun*, Commissioner for Children, Youth, and Families, Department of Health and Human Services

Discussants: *Carlfred B. Broderick*, University of Southern California, and *Ruth H. Jewson*, National Council on Family Relations

Presiding: *Wesley R. Burr*, Brigham Young University



John A. Calhoun

THURSDAY, OCTOBER 23, 1980

8:30 a.m. to 10:00 a.m.

SECTION MEETINGS I

Education

Session A

Improving the Quality of Sexual Life Among Adolescents and Young Adults

(This session will include presentations of results from three recent studies, followed by a discussion of sexual attitudes and behaviors of adolescents and young adults.)

"Sexual Scripts of Adolescents: Conservatism, Liberalism, and Gradualism," *Paul Cameron*, University of Nebraska-Lincoln

"Influence of Family on College Women's Attitudes Toward Sexual Behaviors," *Jill Ginsburg Palmeter*, Oregon State University; and *Sally A. Koblinsky*, San Diego State University

"Interaction, Modeling, and Social Exchange and Their Impact on the Development of Young Adult Sexuality," *Carol Darling and Mary Hicks*, Florida State University

Presiding and Discussion Leader: *Mary Hicks*, Florida State University

THURSDAY, OCTOBER 23, CONTINUED

8:30 a.m. to 10:00 a.m.

SECTION MEETINGS I CONTINUED

Education

Session B

Ethics in Teaching Marriage and Family Courses

(Three university professors and a teaching assistant will present divergent viewpoints on ethical issues facing teachers. Audience participation is encouraged.)

Panel Members: *Elizabeth Socha Davis*, University of Wisconsin-Madison; *John DeFrain*, University of Nebraska-Lincoln; and *Jetse Sprey*, Case Western Reserve University

Organizer and Moderator: *Judith O. Hooper*, University of Wisconsin-Madison

Family Action

Session A

Jealousy in Variant Life Styles

(A discussion of the theoretical meanings of jealousy, with formal papers being critiqued by a discussant.)

"Jealousy in Bisexual Marriages," *Lester Kirkendall*, Emeritus, Oregon State University

"Jealousy, Toward a Comprehensive Model," *Gary Hansen*, Louisiana State University, Baton Rouge

"Jealousy in Gay Father Relationships," *Frederick Bozett*, University of California-San Francisco

Discussant: *Bernard Murstein*, Connecticut College

Organizer and Moderator: *Gary Hansen*, Louisiana State University

Session B

The White House Conference on Families: Reactions and Implications

(Co-sponsored by the Affiliated Councils. Panel discussion on the substantive issues and political realities of the status of the family in 1980.)

Panel Members: *Ronald Daly*, U.S. Department of Agriculture, Washington, D.C.; *Ronald Pitzer*, University of Minnesota; *Vel Brook*, Corvallis, Oregon; and *Ildaura Murillo-Rohde*, University of Washington

Organizer and Moderator: *Sharon Alexander*, National Association of State Boards of Education, Washington, D.C.

Session C

Occupational Involvement, Work Schedules, and Family Interaction

(A panel discussion of current research on unemployment and family stress, dual career marriages and the impacts of work schedule changes on the quality of family life.)

"Unemployment as a Family Stressor," *Patricia Voydanoff*, Merrill-Palmer Institute

"From Night to Day: The Impact of a Shift Change on Family Life," *Jane Hood*, University of Wisconsin-Milwaukee

"Combining Marriage and Career: The Marital Adjustment of Professional Women," *Sharon Houseknecht* and *Annie Macke*, Ohio State University

Moderator: *Peggy Willis*, Pacific Lutheran University

Organizer: *Charles Cole*, Iowa State University

Family Therapy

Session A

Structured Preventive Intervention with Marital Dyads: Identifying Change-Inducing Components

(A panel of investigators will compare the results of recent research on three "enrichment programs" for couples—MCCP, RE, and BE. Following the presentation, each of the three projects will receive a critique.)

Panel Members: *Candyce Russell*, Kansas State University; *Gregory Brock*, University of Wisconsin-Stout; *Harvey Joanning* and *Edward Wilfong*, Texas Tech University; and *Dennis Bagarozzi*, University of Georgia

Discussants: *Jeanette Coufal*, University of Wisconsin-Stout, and *Kenneth Sell*, Catawba College, Salisbury, North Carolina

International

Session A

Family Fertility and Resources

(Panel discussion with a presentation of papers and ideas; and a discussion especially concerning the changing African family situation.)

Organizers: *Christine Oppong*, International Labor Organization, Geneva, Switzerland and *Helen Ware*, Australian National University

Session B

To Marry or Not to Marry

(Presentation of papers, discussion, and audience participation.)

"Childbearing Outside Marriage," *Elwood Carlson*, University of South Carolina-Columbia

"The Effects of Industrialization on Rates of Singleness: A Comparative Analysis," *Nancy A. Greenwood*, Washington State University (co-authored by *Gary R. Lee*, Washington State University)

"A Comparative Analysis of Family Formation in Asia," *Ronald Rindfuss*, University of North Carolina-Chapel Hill (co-authored by *Charles Hirschman*, University of North Carolina-Chapel Hill)

Research and Theory

Session A

Infants, Young Children and Their Parents

(An abstract session, new this year, focusing on interaction between parents and children. There will be 5-minute overviews of each research project, and printed abstracts will be handed out. Further discussions can be arranged informally.)

"Father-to-Infant Attachment Behavior in Prenatal Classes and Presence at Delivery," *Brent C. Miller*, Utah State University and *Sheila L. Bowen*, University of Tennessee

"Multiple Dimensions of Parental Control and Support," *Gary W. Peterson*, University of Tennessee; *Godfrey Ellis*, Oklahoma State University; *Boyd Rollins* and *Darwin Thomas*, Brigham Young University

"The Effects of Parents' and Teachers' Labeling in the Self-Esteem of Hearing-Impaired Children," *Godfrey J. Ellis*, Oklahoma State University and *Harvey C. Brooks*, Washington State University

"Perceptions of Parenthood by Mothers and Fathers," *Viktor Gecas*, Washington State University

Adolescents and Their Parents

"Individuation and Adolescent Development: Using a Family Systems Approach to the Study of Family Interaction," *Catherine R. Cooper* and *Harold D. Grotevant*, University of Texas-Austin

"Sibling Size, Spacing, Density and Birth Order and the Quality of the Parent-Adolescent Relationship," *Jeannie S. Kidwell*, Texas Tech University

"Family Problem-Solving: The Combined Effects of Interaction, History and Problem Characteristics of Family Solution Quality," *Richard J. Galligan*, University of Akron

Adult Children and Their Parents

"Intergenerational Exchange and Quality of Life Among the Elderly," *Gary R. Lee*, Washington State University

"Relationship Styles of Married Children and Their Parents," *Judith Fischer* and *Jeffrey Larson*, Texas Tech University

"Mothers and Mothers-in-Law," *Lucy Rose Fischer*, University of Minnesota

Chair: *Joan McCord*, Drexel University

Session B

New Developments in the Actuarial Assessment of Marital and Family Interaction

(This will be a panel discussion about measurement of marital and family interaction.)

"Multidimensional Assessment of Marital Interaction: Implications for Treatment and Research," *Douglas K. Snyder*, Wayne State University

"Assessment of Child and Adolescent Personality: an Actuarial Approach," *Charles Gdowski*, Lafayette Clinic, Detroit

THURSDAY, OCTOBER 23 CONTINUED

8:30 a.m. to 10:00 a.m.

SECTION MEETINGS I CONTINUED

Research and Theory

Session B Continued

"The Relationship of Marital Dysfunction to Psychiatric Disturbance in Children: An Empirical Analysis Using the MSI and PIC," *Douglas Snyder*, Wayne State University and *Charles Gdowski*, Lafayette Clinic, Detroit

"Assessing the Distribution of Affect Within Marital and Family Relationships," *Joseph C. Lowman*, University of North Carolina-Chapel Hill

Organizer and Moderator: *Douglas K. Snyder*, Wayne State University

Session C

Family Stress and Coping—Impact on Children

(This is a panel discussion focusing on stress and coping from both the child and parent perspective.)

"Family Stress and Adolescent Drug Use," *Richard Needle*, *Mark Hochhauser*, and *Hamilton McCubbin*, University of Minnesota

"Parental Stress and Coping—Impact on Children with Chronic Illness," *Robert Nevin*, Indiana University at Indianapolis; *Joan Patterson*, *Joan Comeau* and *Betsy Cauble*, University of Minnesota

"Family Coping with Social Stress—Impact on Children in Black Families," *Grace Massey*, University of Connecticut and *Marie Peters*, Toddler-Infant Experiences, Oakland, California

"Low-Income Families—Coping and Effects on Children," *Diane Dill*, Harvard University

Organizer and Moderator: *Hamilton McCubbin*, University of Minnesota

Minorities Session

Organizer and Chair: *David Baptiste*, New Mexico State University

10:15 a.m. to 11:45 a.m.

PLENARY SESSION II

Decade Preview—The Family Field and the 1980's

(Each panel member will present a prescriptive analysis of the family field in the 1980's. A dialogue between presenters and with the audience will follow.)

Panel Members: *Reuben Hill*, University of Minnesota; *Greer Litton Fox*, Wayne State University; *Felix M. Berardo*, University of Florida; *Jacqueline Wiseman*, University of California-San Diego

Presiding and Moderating: *Joan Aldous*, University of Notre Dame

Presentation of the Osborne Award, *Mary Lou Purcell*, Auburn University, presenter

12:00 noon to 1:30 p.m.

ROUND TABLE LUNCHEONS

(Please see the enclosed round table sheet for list of topics and instructions for registering. Round tables are limited to 10 persons and require advance registration.)

2:00 p.m.

SCENIC AUTUMN TOUR

(Bus trip up the beautiful Columbia Gorge and around to the Timberline Lodge on Mount Hood. Some will stay for dinner and return at 8:00. Some will return at 5:00 to have dinner in town.)

Chair: *Helen Hartness*, Emeritus, Lewis and Clark College

8:30 p.m. to midnight

ALUMNI CELEBRATION

Chair: *Candace Fake*, Burlington County College, New Jersey

(Annual party sponsored by NCFR Students for all conference delegates.)

FRIDAY, OCTOBER 24, 1980

8:30 a.m. to 10:00 a.m.

SECTION MEETINGS II

Education

Session A

Meeting Governmental and Professional Demands for Research-Evaluation in Family Life Education

(This session will be a presentation of a study followed by group discussion of issues involved in evaluation and research of educational programs.)

"Family Life Education and Attitudes Change in Adolescents," *Margaret E. Arcus*, University of British Columbia, and *Thomas Abernathy, Jr.*, University of Saskatchewan

Discussants: *Arthur W. Avery*, University of Arizona and *Brent Miller*, Utah State University

Organizer and Discussion Leader: *J. Joel Moss*, Brigham Young University

Session B

Applying Experiential Learning to Improving the Quality of Life

(Educational demonstrations in experiential learning will be led by educators. The audience will also be involved in learning new skills and concepts.)

"A Cognitive-Behavioral Approach to Strengthening Self-Image," *Marcelle Straatman*, Oregon State University

"A Cognitive-Behavioral Approach to Social Skills Training with Shy Persons," *Lynda A. Haynes-Clements*, Louisiana Tech University and *Leanne Lamke*, Arizona State University

"Creativity in the Classroom Through Literature," *Cecilia D. Gray*, California State University-Sacramento

Presiding: *Marjorie Brownwright*, Oregon State University

Session C

Families Cope with a Changing Society

(A presentation and discussion of several issues illustrating how families react to changing social conditions.)

"Surviving a Move: Family Coping Strategies," *Paul Ammons* and *John Wodarski*, University of Georgia

"Perception of Self as a Parent by Childfree Men and Women," *Kaye L. Zuengler* and *Richard N. Hey*, University of Minnesota

"Socialization for Family Violence," *Ira W. Hutchison*, University of North Carolina-Charlotte

Presiding: *Gladys K. Phelan*, University of Idaho

Family Action

Session A

Midlife Transitions and the Impact on the Quality of Marriage and Family Life

(A colloquium panel discussion of current research and theory on the midlife period of the family life cycle in terms of policy implications.)

"Conceptualization of the Midlife Era: Is it Stagnation, Maintenance or Transition," *Rosalie Ackerman*, Iowa State University

"Role Strain and Depression in Two-Job Families," *Pat Keith* and *Robert Schafer*, Iowa State University

"Marital Consequences of Women's Educational and Career Re-entry," *Jeanne Smith*, University of California-Davis

"Governmental Policies Impacting on Husband-Wife Dyad in the Family System Context," *Peggy Draughn*, Louisiana State University

Organizer and Moderator: *Rosalie Ackerman*, Iowa State University

Session B

Forum on Premarital Counseling and Enrichment Programs

(This session will be a discussion of current trends in pre-marital counseling and enrichment programs with regard to assessing the effectiveness of the programs and suggestions will be made for improving the effectiveness in future programs.)

"In-Lawing Made Easier," *Glen Jensen*, Utah State University

FRIDAY, OCTOBER 24 CONTINUED

8:30 a.m. to 10:00 a.m.

SECTION MEETINGS II CONTINUED

Family Action

Session B Continued

"Evaluating the Effectiveness of a Premarital Enrichment Program: An Assessment of Relationship Adjustment," *Carl Ridley, Stephen Jorgensen, Anita Morgan and Arthur Avery*, University of Arizona

"Education for Marriage: Evaluation and Program Implications," *Rosalie Norem*, Iowa State University

"Pre-Marriage Evaluation," *David Fournier*, Oklahoma State University

Organizer and Moderator: *Charles Hennon*, University of Wisconsin-Madison

Session C

Remarriage: Second Families Assessing the Quality of Family Life

(A dialogue of panelists discussing current research, theory, and practice on remarriage, with social policy implications)

Panel Members: *Kay Pasley and Marilyn Ihinger-Tallman*, Washington State University; *David Mills*, Seattle, Washington; and *Daniel Safran*, San Francisco Center for the Study of Parent Involvement

Moderator: *Irving Tallman*, Washington State University

Organizers: *Marilyn Ihinger-Tallman and Kay Pasley*, Washington State University

Family Therapy

SECTION BUSINESS MEETING

(Section members will enjoy coffee, juice, and rolls)

Presiding: *Marcia Lasswell*, University of Southern California, Section Chair

International

Session A

We as Individuals or as a Group

(Presentation of papers and discussion by a prepared discussant as well as the audience.)

"Marital Relations in Colombia," *Bron Ingoldsby*, Kent State University

"Intimacy as a Part of Family Interaction," *Floyd M. Martinson*, Gustavus Adolphus University, St. Peter, Minnesota

"Marital Integration: Its Definition and Measurement," *Sylvia Viljoen*, University of Pretoria, South Africa

Presiding: *Maximiliane Szinovacz*, Florida State University

Session B

Equals or Equally Good

(Presentation of papers and discussion by a prepared discussant as well as the audience.)

"Measurement of Egalitarianism of University Students in USA, Egypt, Germany, and Israel," *Virginia Frei Grundstrom*, Northern Michigan University

"Managers and Their Wives: A Cross Cultural Replication," *Mildred Weil*, Patterson College, New Jersey

"Parental Sharing of Child Care Tasks in Sweden," *Linda Haas*, Indiana University

"Employment Role and Division of Household Tasks in Korean Immigrant Families," *Kwang Chung Kim*, Western Illinois University (co-authored by *Won Mao Hu*)

Presiding: *Eugen Lupri*, University of Calgary

Research and Theory

SECTION BUSINESS MEETING

(Continental breakfast will be served to Section members. Also an award will be announced for the "outstanding research paper" for 1979.)

Presiding: *Pauline Boss*, University of Wisconsin-Madison, Section Chair

10:15 a.m. to 11:45 a.m.

PLENARY SESSION III

Marriages in Crisis: A Systems Perspective on Treatment and Prevention

(This will be a discussion of the major systems dynamics that are associated with marital breakdown, and the use of family therapy in the treatment of marital crisis. The use of family therapy as a preventive approach will also be discussed. Specific recommendations will be made for programs aimed at preventing marital stress.)

Address: "Marriage System," *Augustus Napier*, Alliance for Counseling and Therapeutic Services, Atlanta, Georgia

Presentation of the Distinguished Service to Families Award and the Commendation Award, *Cecilia Gray*, California State University-Sacramento, presenter

Presiding: *Gerhard Neubeck*, University of Minnesota

12:00 noon to 1:00 p.m.

STUDENTS AND YOUNG PROFESSIONALS BUSINESS MEETING

Presiding: *Nancy Bueche*, University of North Carolina-Greensboro

1:00 p.m. to 2:30 p.m.

SECTION MEETINGS III

Education

Session A

Holistic Health and the Middle Years

(Presentation of four components of holistic health in the middle years (45-65), followed by audience participation.)

"Gerontological Research and Holistic Health," *George Fitzelle*, University of Rhode Island

"Stress and Nutrition in the Middle Years," *Mark Tager*, Health Promotion Consultant, Kaiser-Permanente Medical Foundation, Portland, Oregon

"Human Sexuality and Optimum Health in the Middle Years," *Joseph Trainer*, University of Oregon School of Medicine, Portland

"Physical Activity as it Affects Health and Longevity at Midlife," *Johnette Peery*, Portland Community College

Organizer and Chair: *Dean K. Hoffman*, Indian Health Service, U.S. Public Health Service, Reno, Nevada

Session B

Improving Communication Skills

(Presentation of two models of communication skills training, illustrating how university students and community groups benefited.)

"Communication as a Process: Empirical Findings and Field Experience," *John Strong*, Iowa State University

"A Model for Communication Skill Training Through Parent Education Practicum Within a University Parent Education Course," *Robert E. Keim*, Northern Illinois University

Presiding: *Walter Beam*, Indiana University

Family Action

Session A

Marriage Enrichment: Explanation and Demonstration

(A workshop on marriage enrichment with a brief explanation of what it means and a demonstration with audience participation of how to conduct marriage enrichment workshops.)

Organizers and Leaders: *David and Vera Mace*, A.C.M.E., Winston-Salem, North Carolina

Presiding: *Anna Cole*, Marriage Counseling Associates, Ames, Iowa

Session B

Meeting the Needs of Aging Families: Applying Theory and Research—A Panel Discussion in Honor of Muriel Brown

(Focal concerns of older persons and families in the decade ahead: a panel discussion and assessment of the needs of older persons and their families in the 1980's.)

Panel Members: *Clifton Barber*, Colorado State University; *Jane Oyer*, Michigan State University; *Wayne Seelbach*, Lamar University; *Timothy Brubaker*, Miami University, Ohio; and *James DeBurger*, University of Louisville

Organizers and Co-chairs: *James DeBurger*, University of Louisville, and *Timothy Brubaker*, Miami University, Ohio

FRIDAY, OCTOBER 24 CONTINUED

1:00 p.m. to 2:30 p.m.

SECTION MEETINGS III CONTINUED

Family Action

Session C

Military Families: Stresses and Supports

(A symposium discussion of researchers on the military family, addressing the issues of special problems and stresses of being a military family and assessing the effectiveness of programs and support systems provided for them.)

"Gender Roles and Wives' Coping Patterns," *Joan Patterson and Hamilton McCubbin*, University of Minnesota

"Navy Separations and Physical Illness: A Failure to Conform," *D. Stephen Nice*, Naval Health Research Center

"Factors Contributing to Divorce in Air Force Marriages," *John Williams*, U.S. Air Force Academy, Colorado

"Attitudes Toward Family Support Programs Among Military Families," *Dennis Orthner and Gary Bowen*, University of North Carolina-Greensboro

"Navy Family Service Centers: Development and Implementation," *Ann O'Keefe*, Department of the Navy

Presiding: *Dennis Orthner*, University of North Carolina-Greensboro

Family Therapy

Session A

Family Law as a Counseling Issue

(A symposium on Family Law. The program will investigate the interface between lawyers, judges, legislators, family researchers and therapists.)

Panel Members: *Joyce Cohen*, Oregon State Legislature; *Jay Folberg*, Lewis and Clark University Law School; *Mark Lohman*, Divorce Mediator, McLean, Virginia; and *Nancy Ann Holman*, Judge, King County Superior Court, Seattle

Presiding: *Stephen Bahr*, Brigham Young University

Session B

Theoretical Variations on Counseling

(Three theoretical positions on counseling will be presented as well as a scale for assessing attributes of family therapists.)

"Friendly Persuasion: A Social-Psychological Model of Counseling," *Janis Pulliam-Krager*, California State University-Long Beach

"You Can Go Home Again—A Family Systems Approach for Victims of Sexual Abuse," *Marilyn Mason*, Private Practice, Minneapolis, Minnesota

"Are We Born Lovers?" *Terry Smith Hatkoff*, California State University-Northridge

"Orientations Scale: Assessing the Beliefs, Behaviors, and Personality Attributes of Family Therapists," *Robert Green*, Virginia Commonwealth University

Presiding: *Arthur Williams*, Private Practice, Anamosa, Iowa

Session C

Similarities and Differences in Adjustment Following Divorce From or Death of a Spouse

(A panel on how the grief process operates following either divorce or the death of a spouse. There are special similarities as well as important differences.)

"Man in Crisis—The Widower," *Jane Burgess-Kohn*, University of Wisconsin-Waukesha

"A Comparison of the Grief Process in Divorce with the Bereavement Model of Elizabeth Kubler-Ross," *John Crosby*, University of Kentucky

Moderator: *Gerald Larue*, University of Southern California

International

SECTION BUSINESS MEETING

Presiding: *Jan Trost*, University of Uppsala, Sweden, Section Chair

Research and Theory

The Meaning and Measurement of Interaction

(This special session focuses on two old-fashioned issues—reliability and validity. Much is written about ways of recording sequences of interactive behaviors reliably, but little is said about the problem of choosing what to focus on and how to distill information from descriptive records. Our guest presenters say they can't claim answers, but at least they will define and discuss the crucial issues.)

Presenters: *Michael Lamb*, University of Michigan, and *Gordon Stephenson*, University of Wisconsin-Madison

Presiding: *Pauline Boss*, University of Wisconsin-Madison

2:45 p.m. to 3:45 p.m.

BURGESS AWARD LECTURE AND PRESENTATION

Presentation of Burgess Award, *Murray Straus*, University of New Hampshire, presenter

Address, *Glen Elder*, Cornell University, 1979 Burgess Award Recipient

Presiding: *Murray Straus*, University of New Hampshire

4:00 p.m. to 5:30 p.m.

BURGESS AWARD RECEPTION AND DISCUSSION

Presiding: *Murray Straus*, University of New Hampshire

4:00 p.m. to 5:30 p.m.

SECTION MEETINGS IV

Education

Session A

From Research to Educational Programming at the Work-Family Interface

(This workshop will begin by identifying various work-family role dilemmas. Small group sessions focusing on educational program ideas for schools and community agencies will follow.)

"Problem Perception and Problem Solving Strategies for Dual Career Couples," *Dianne K. Kieren*, University of Alberta

"Workaholism and Personal and Family Health," *Jane Ligowski*, University of Alberta

"Job Sharing: Maximizing Career and Family Potentials," *Brenda and Gordon Munro*, University of Alberta

"Designing After Hours Services for Dual Work Families," *Doris Badir*, University of Alberta

Presiding: *Barbara Jeffrey*, University of Alberta

Session B

Getting Family Life Education to the People

(This "how to do it" panel will present various methods to deliver family life education to lay audiences.)

"A Community Council Provides Education Through Volunteers," *C. Daniel Fisher*, Family Life Council of Greater Greensboro

"The Use of Radio," *Lynn Scoresby*, Brigham Young University

"The Use of Public Schools," *Terrance Olson*, Brigham Young University

"The Use of Community Consortia," *Frank Apolonio*, Weber State University

"Using the Cooperative Extension Service," *T. Scott Lane*, University of Georgia

Organizer and Moderator: *Brent Barlow*, Brigham Young University

Session C

Strengthening Families to Redirect Drug-Prone Youth

(A social learning intervention approach with youth will be illustrated with slides followed by a demonstration of family strengthening techniques.)

Presenters: *Robert H. Coombs* and *Ted Eckman*, University of California-Los Angeles

Family Action

SECTION HOSPITALITY HOUR AND BUSINESS MEETING

Presiding: *Charles Cole*, Iowa State University, Section Chair

FRIDAY, OCTOBER 24 CONTINUED

4:00 p.m. to 5:30 p.m.

SECTION MEETINGS IV CONTINUED

Family Therapy

Session A

Clinical Sociology: Contributions to Family Therapy

(A symposium on the revival of this topic. The participants will review the history, the present, and the future of the application of sociology in clinical pursuits.)

Panel Members: *William F. Kenkel*, University of Kentucky; *Sandra Schrader*, University of Connecticut; *C. Ray Fowler*, American Association for Marriage and Family Therapy, Upland, California; and *John Hudson*, Arizona State University

Moderator: *Thomas Lasswell*, University of Southern California

Session B

Divorce Therapy: The First Decade Review of Research and Implications for Practice

(A symposium on outcome research in divorce therapy will focus on a critique of empirical research and on research needs for the future.)

Panel Members: *Cheryl Storm*, Purdue University and *Ann Coetting*, Western Kentucky University

Organizer and Moderator: *Douglas Sprenkle*, Purdue University

International

Session A

Family and Disaster

("Family and Disaster" was the theme of an international seminar held at Uppsala, Sweden, June 1980. The seminar was co-sponsored by the Committee on Family Research of the International Sociological Association and the International Section of the NCFR. A panel will present some of the main ideas from the Uppsala seminar, which dealt with families and disaster from practical, theoretical, and research perspectives.)

Panel Members: *Wilfried Dumon*, University of Louvain, Belgium; *Pauline Boss*, University of Wisconsin-Madison; *Hamilton McCubbin*, University of Minnesota; and *Jan Trost*, Uppsala University, Sweden

Discussant: *Charles Figley*, Purdue University

Organizer: *Orjan E. Hultaker*, Uppsala University, Sweden

Session B

Pre- and Post-Planning

(Presentation of papers and discussion by a prepared discussant as well as with the audience.)

"Issues in Cross-Cultural Therapy: The Case of International Graduate Student Families," *Ephraim A. Frankel*, University of Wisconsin-Madison (co-authored by *Imogene Higbie*, University of Wisconsin-Madison)

"The Permanent Availability Model: Canadian-American Comparisons," *Jean Veevers*, University of Western Ontario

"Preparation for and Satisfaction with Retirement Among Canadians," *Thomas J. Abernathy*, University of Saskatchewan (co-authored by *Margaret Arcus*, University of British Columbia)

"Effects of the Hospitalization of a Child on the Family," *Sandra Levy*

Presiding: *Constantina Safilios-Rothschild*, Pennsylvania State University

Research and Theory

Session A

The Current Status of Theories of Black Family Life

(This panel session provides an integration of research on Black families, toward the development of a theoretical base for further understanding of Black family structure and interaction.)

"New Perspectives on the Afro-American Family Experience," *Walter Allen*, University of Michigan

"Changing Theoretical Perspectives and Future Directions of Black Family Research," *Leonor B. Johnson*, The Urban Institute, Washington, D.C.

"Existing Gaps in Black Family Theory and Research," *Harriette P. McAdoo*, Howard University

"Theories of Black Family Life and the African Imperative," *Wade W. Nobles*, Black Family Research Projects, San Francisco

Discussant: *Robert Staples*, University of California-San Francisco

Organizer: *Noel Cazenave*, Temple University

Session B

Poster Session

(This type of session is a new format being tried this year. The researchers will be spread out through the room, with posters identifying the titles of their projects. The audience can move about the room, interacting personally with the authors as they explain their research. The researchers on the east side will emphasize Sex Roles, and Gender as they relate to the quality of family life. The researchers on the west side will focus on Interaction Between the Larger Political/Social Environment and the Family and on Interaction Inside the Family System Itself.)

"Consistency of Sex Role Attitudes of Women, 1962-1977," *Arland Thornton and Deborah Freedman*, University of Michigan

"Time Use and Family Life: The Relationship of Household Division of Labor and Perceived Quality of Family Life," *Karen P. Goebel*, *Charles B. Hennon* and *Norleen M. Ackerman*, University of Wisconsin-Madison

"Sex Role Norms and Behavior in Single Parent Families," *Marie Richmond-Abbott*, Eastern Michigan University

"Career and Family Roles of High Achieving Women and Their Husbands," *Jo-Ann Nicola*, University of California-Davis

"Values and Costs of Children Before and After the First Child," *Brent C. Miller*, Utah State University; *Donna L. Sollie*, Texas Tech University; and *Randy M. Jones*, Utah State University

"Sexual Inequality and the Quality of Family Life in American States," *Murray A. Straus and Kersti Yllo*, University of New Hampshire

"Familism: A Comparison of Mexican American and Anglo Family Togetherness in a Southwestern Community," *David E. Jorgenson*, Southwest Texas State University

"The Relation Between Marital Adjustment and the Use and Abuse of Alcohol by Married Women," *Diane Logan*, University of Georgia

"The Relationship Between Family Environment and Dysfunctional Eating Behavior: Toward Identification of Pre-Anorexic Families," *Nancy E. Johnson and Pauline C. Boss*, University of Wisconsin-Madison

"The Status of Women and Wife-Beating in the U.S.: A Multi-Level Analysis," *Kersti Yllo*, University of New Hampshire

"The Effect of Marital Communication Styles Upon Marital Problems," *Albert Banwart*, University of Wyoming

"Sexual Interaction Sequences in Ongoing Relationships," *David L. Weis*, Douglass College, Rutgers University

"Assessing Equity and Rewards in Intimate Relationships," *Rodney M. Cate*, *June M. Henton*, and *Sally Lloyd*, Oregon State University

"Marital Satisfaction of Token Women in a Segmented Labor Force," *Pamela Riley and Bryan Spylcerman*, Utah State University

"Family Altruism and Family Stress: The Related Kidney Donor," *Roberta C. Simmons*, University of Minnesota

Presiding: *Maximiliane Szinovacz*, Florida State University, and *Randall Day*, South Dakota State University

Session C

Networks and Dyads: Close Relationships in Social Context

(This session will be a panel that will focus on interaction with pre-marital as well as family social networks.)

"Dyadic and Social Networks Interaction from Premarriage to Marriage," *Catherine A. Surra*, Utah State University

"A Longitudinal Study of Social Activity Among Dating Partners and Their Social Networks," *Robert M. Milardo*, Pennsylvania State University

FRIDAY, OCTOBER 24 CONTINUED

4:00 p.m. to 5:30 p.m.

SECTION MEETINGS IV CONTINUED

Research and Theory

Session C

- "The Role of Parents in Premarital Relationships Development," *Leigh A. Leslie*, Yale University
 "Reciprocal Processes of Parent-Child Influence," *Beverly Purrington*, Denison University
 Organizers: *Michael P. Johnson and Ted L. Huston*, Pennsylvania State University

5:00 p.m. to 6:00 p.m.

ETHNIC MINORITIES SECTION BUSINESS MEETING AND SOCIAL

Presiding: *David Baptiste*, New Mexico State University



Ira L. Reiss

8:00 p.m. to 9:00 p.m.

PRESIDENTIAL ADDRESS

"Ideology and Sexuality," *Ira L. Reiss*, University of Minnesota, NCFR President

9:00 p.m. to midnight

A NIGHT AT THE CABARET

(Presidential reception with combo, refreshments and Dutch treat bar.)

Chair: *Helen Thun Hartness*, Emeritus, Lewis and Clark College

SATURDAY, OCTOBER 25, 1980

7:45 a.m. to 8:30 a.m.

EDUCATION SECTION BUSINESS MEETING

(Continental breakfast will be served to members of the Section while business is being conducted.)

Presiding: *George P. Rowe*, University of Nebraska-Lincoln, Section Chair



Urie Bronfenbrenner

8:30 a.m. to 10:00 a.m.
PLENARY SESSION IV

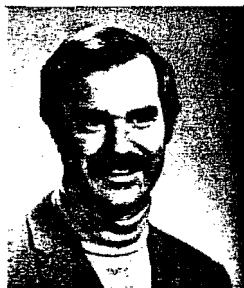
(This session is sponsored by the Students and Young Professionals. The presentations will examine the nature of support systems of families with young children, and then explore methods of intervening in these systems.)

Address: "Environmental Stresses and Supports in Parent-Child Activities," *Urie Bronfenbrenner*, Schurman Professor of Human Development and Family Studies and Psychology, Cornell University

Address: "Informal Support Systems," *Moncrieff Cochran*, Cornell University

Presentation of the Student Award, *Steve Elliott*, Bowman Gray School of Medicine, presenter

Presiding: *Carolyn Love*, J. C. Penney Company, New York



Moncrieff Cochran

10:15 a.m. to 10:45 a.m.

NCFR BUSINESS MEETING

Presiding: *Ira L. Reiss*, University of Minnesota, NCFR President

11:00 a.m. to 12:30 p.m.

SECTION MEETINGS V

Education

Session A

Parent Education: Past, Present, and Future

(The historical development of parent education will be reviewed, followed by two empirical studies of parents with infants. Implications for the future will be discussed with the audience.)

"Historical Development of Parent Education in the U.S. from the Colonial Period Through 1979," *Catherine Chilman*, University of Wisconsin-Milwaukee

"Childrearing in Black Families: Potential Continuities and Discontinuities Between Home and School," *Marie F. Peters*, Toddler-Infant Experiences Studies, Oakland, California

"Influencing the Reciprocal Interaction Between Parents and the Infant," *Sherry T. Boyd*, University of Oregon Health Science Center, Portland

Facilitator: *Anita F. Stafford*, Texas Woman's University

Session B

Improving the Quality of Life in the Later Years

(Two models will be presented to improve life for older persons. A panel will focus on marital interaction and then a group-work approach for families with aged relatives will be described.)

"The Quality of Marital Interaction of Older Couples: From Theory to Education," *Francis D. Glamser*, University of Southern Mississippi, *Norah Keating and Pat Leginsky*, University of Alberta

"The Development and Evaluation of Community Based Support Groups for Families of Aged Persons," *Alida G. Silverman*, Child and Family Services of Brighton, Michigan (*Carl Brahm and Joel Leon*, University of Michigan, co-authors)

Presiding: *Vicki L. Schmall*, Oregon State University

Family Action

Session A

Self-Disclosure and Relationship Quality

(A panel of researchers discuss the conceptual meanings of self-disclosure and examine research findings in light of theories of self-disclosure.)

"Breadth and Depth of Self-Disclosure as a Function of Length and Type of Relationship," *Donna Sollie*, Texas Tech University

"Sex Roles and Situational Influences on Self-Disclosure and Marital Satisfaction," *Stephen Jorgensen*, University of Arizona

"Self-Disclosure, Self-Other Esteem and Dyadic Adjustment Among Nonmarried Cohabiting Couples," *Charles Cole and Stephen Goettsch*, Iowa State University

Moderator: *Sharon Houseknecht*, Ohio State University

Organizer: *Charles Cole*, Iowa State University

Session B

Divorce and Beyond: Establishing a New Identity

(A symposium on post divorce life adjustments.)

"The Binuclear Family: An Emerging Life Style for Postdivorce Families," *Constance R. Ahrons*, University of Wisconsin-Madison

"Personal Reflections on a Journey Through Divorce," *Charles B. Hennon*, University of Wisconsin-Madison

Organizer: *Emily Brown*, Divorce and Marital Stress Clinic, Arlington, Virginia and the Focus Group on Divorce and Divorce Reform

Discussant: *Stephanie Cooney*, University of Maryland

Presiding: *Diane Flynn*, Iowa State University Extension, Sioux City

Family Therapy

Session A

Assessment Scales as Counseling Tools

(This session will focus on four new assessment scales with discussions of their use in varied therapeutic settings.)

"Assessing Parent Satisfaction," *Helen K. Cleminshaw*, University of Akron

SATURDAY, OCTOBER 25 CONTINUED

11:00 a.m. to 12:30 p.m.

SECTION MEETINGS V CONTINUED

Family Therapy

Session A

"Use of the Circumplex Model of Marital and Family Systems in a Diagnostic Interview with a Local Honolulu Family," *Philip Mark*, Makiki Christian Church, Honolulu

"Conflict: Diagnosis and Strategies for Treatment," *Richard Berrett*, Private Practice, Fresno, California

"Assessing the Serious Juvenile Offender and His Family," *Bernard Davidson*, Texas Tech University

Session B

Counseling Issues in Relationship

(Four papers on counseling issues in relationships including premarital and marital sex, and parental influence.)

"Relationship Enhancement for Single Females: Interpersonal Network Intervention," *Debi Hegi*, Texas Tech University

"Premarital Sexual Guilt," *Edward Herold*, University of Guelph

"Parental Influence on Love, Sexual Behavior and Sexual Satisfaction of Never-Married College Students," *Carol Darling*, Florida State University

"The Dynamics of Client Sabotage and Resistance in Sex Therapy,"

Laura Schlessinger, private practice, Los Angeles, California
Presiding: *Bunny Duhl*, Boston Family Institute, Massachusetts

International and Family Therapy

Parents Without Custody

(This is a discussion session headed by a panel of colleagues who are interested in divorce, the dynamics of single parent family life, and the situation of parents without custody. Panel members will raise key issues, but the emphasis will be on an exchange of ideas with those attending the session. Central themes for discussion include: problems of non-custodial parents; the dynamics of the "new family" relationships between ex-spouses and between children and parents who do not have custody; and related policy issues in visitation, custody, and support.)

Panel Members: *Joan Aldous*, University of Notre Dame; *Robert S. Weiss*, Harvard Medical School; *Jan Trost*, Uppsala University; *Frederick Duhl*, Boston Family Institute; *Rona Klein*, Wellesley College; *Wilfried Dumon*, University of Louvain, Belgium; and *Stanley Cohen*, University of Oregon

Organizer and Moderator: *Susan Anderson-Khleif*, Wellesley College

Research and Theory

Session A

Behavioral Assessment of Marital Interaction

(This panel presents the "state of the art" regarding the measurement of couple interaction theory. Hardware and software will be discussed.)

"Affective Responsiveness in Marital Interaction," *John Gottman*, University of Illinois

"Assessing Couple Interaction: The Dyadic Interaction Scoring Code," *Erik Filsinger*, Arizona State University

"Mechanically Aided Data Collection," *Richard Holm*, University of Washington

"Recent Theoretical Developments in Couple's Therapy," *Robert Weiss*, University of Oregon

"Critical Overview of Papers Presented and Issues Raised," *Robert Lewis*, Arizona State University

Organizers: *Robert Lewis* and *Erik Filsinger*, Arizona State University

Session B

Abstract Session

(This session focuses on the Stress of Family Boundary Changes. Five minute reviews will be given for each paper by the author, followed by distribution of the abstract to the audience. Discussions will follow.)

"Blended Families: Parental Power and Role Structures," *Jean Giles-Sims*, Texas Christian University

"Life Satisfaction and Well-Being: A Study of Recently Divorced Men and Women," *Rite Erishkine*, Cascade Research Center, Vancouver, Washington

"Family Relationship and Coping Styles of the Corporate Family," *Thomas P. Gullotta* and *Kevin Donohue*, University of Connecticut, and *Scott Stevens*, Gastonbury Youth Services

"The Quality of Family Life: Offenders and Their Families," *Robert L. Hampton*, Connecticut College

"Effects of Relocation on Employees of the National Headquarters of the Boy Scouts of America," *H. Bruce Ayars*, Boy Scouts of America National Office, Irving, Texas

"Parents and Children: Varying Perceptions of the Decision to Divorce," *Lisa Baker*, Purdue University

"Coping Behavior in Families with Acquisition of a New Member by Birth," *Jacqueline Ventura*, University of Wisconsin-Madison
Presiding: *Leanne K. Lamke*, Arizona State University

PRE-CONFERENCE WORKSHOPS

FAMILY PROBLEMS AS SEEN IN CHILDREN'S BOOKS

This workshop, sponsored by the Family Therapy Section, will be devoted to a review and critique of current books for children dealing with family problems such as divorce, death, alcoholism, sibling rivalry. Books will be on display and a bibliography will be available to each participant. This session will be held on Wednesday, October 22, from 1:00 to 3:00 p.m. The Leader is *Bernice Hunt*, Bedford, New York, a children's book author and editor-in-chief of a children's book publishing house. Pre-registration is required. The workshop is free to members of the Family Therapy Section; \$5.00 for all others.

REGULATION OF MARITAL AND FAMILY THERAPY: STRATEGIES FOR CERTIFICATION AND LICENSURE

The workshop, co-sponsored by the Family Action and Family Therapy Sections, will be a working forum, with didactic presentations on the current status of licensing and certification of marital and family therapy throughout the U.S. It will be led by *William C. Nichols*, president-elect of the AAMFT and a past president of the NCFR. Dr. Nichols is in private practice in Birmingham, Michigan. The workshop is from 8:00 a.m. to noon on Wednesday, October 22. Registration is open.

QUALITY OF FAMILY LIFE IN THE MILITARY.

The purpose of this workshop is to provide persons interested in family services, education and research an opportunity to explore seriously issues related to improving the quality of life among military families. The workshop will encourage meaningful and continuing dialogue between interested professionals in and out of the military.

Representatives of the Navy, Marines, Air Force, and Army will explain their current family programs and needs. Presentations will also be made on military family research priorities and attitudes toward family support programs among military families. Discussion oriented workshop sessions will be organized around the following topics: Military Family Research, Military Family Policy/Impacts, Marriage and Family Enrichment Programs, Military Family Stress, and Counseling Military Families. In each of these areas the groups will focus on the priorities, resources, and strategies needed to strengthen families.

Anyone interested in military families is invited to participate. The workshop begins at 9:00 a.m. on Tuesday, October 21. The program is as follows:

9:00 to 10:30 a.m.

Orientation to Military Family Programs and Policy

Introduction: *Dennis K. Orthner*, University of North Carolina-Greensboro

U.S. Navy: *Cdr. Robert Moffit*, Navy Family Program
 U.S. Marines: *Maj. Charles Bellis*
 U.S. Air Force: *Cecile Landrum*, Department of the Air Force
 U.S. Army: Army Community Center representative

Discussion and Questions:

Moderator: *Barbara A. Chandler*, LCDR (ret.), Arlington, Virginia

11:00 a.m. to 12:00 noon

Changing Dimensions of Military Family Life

"Attitudes Toward Family Support Programs Among Military Families," *Richard Brown*, University of North Carolina-Greensboro
 "Research Needs of Military Families: Priorities and Prospects," *Gerald Croan*, Westinghouse National Issues Center
 Presiding: *Dennis K. Orthner*, University of North Carolina-Greensboro

1:30 to 4:00 p.m.

Workshops on Military Families

- A. Military Family Research: *Dennis K. Orthner*, University of North Carolina-Greensboro
- B. Military Family Policy/Family Impacts: *Robert M. Rice*, Family Service Association of America
- C. Marriage and Family Enrichment: *Chaplain Capt. David Hunsicker*
- D. Military Family Stress: *Hamilton McCubbin*, University of Minnesota

Workshop objectives: (1) determine critical issues and priorities; (2) examine obstacles to development; (3) assess major resources; (4) evaluate strategies for bringing about improvements for families.

4:00 to 5:00 p.m.

Presentation and Discussion of Workshop Results

Co-Moderators: *Dennis K. Orthner* and *Barbara A. Chandler*

7:30 to 9:00 p.m.

Presentation - "Play for Living"

(This is a drama designed to portray family dynamics associated with deployment and separation in the military.)

Audience interaction and discussion to follow.

Reception for Participants - Sponsored by the Navy League

The workshop coordinators are *Dennis K. Orthner*, military family researcher and educator; and *Barbara A. Chandler*, LCDR (ret.), family life educator.

There is no charge for participating in the workshop, but pre-registration is required. Write to *Dennis K. Orthner*, *Military Family Workshop*, 3700 Chadford Place, Greensboro, NC 27410 for further information and registration forms.

THREE LEARNING DOMAINS INTEGRATED INTO EFFECTIVE FAMILY LIFE EDUCATION

This workshop, sponsored by the Education Section, will allow participants to interact with the curriculum development process of an integrated K-12 Family Life Education Program in the Calgary Public Schools, where Family Life and Sex Education programs have been available since the early 1960s. In Calgary programs include communication skills, exercises to enhance self-concept and self-esteem, values and decision making, as well as human sexuality. The leaders are *Bunny Gow* and *Craig Fraser*, program teachers in Calgary, and the coordinator is *Barbara MacDougall*, curriculum specialist with the Calgary Board of Education.

The workshop will be held Wednesday morning, October 22, from 9:30 a.m. to 12:30 p.m. Registration is open.

Registration remains open for the annual workshop on *Theory Construction and Research Methodology*, to be held on October 21-22. For registration write the chair, *David M. Klein*, Department of Sociology and Anthropology, University of Notre Dame, Notre Dame, IN 46556.

The program is as follows:

THEORY CONSTRUCTION AND RESEARCH METHODOLOGY

TUESDAY, OCTOBER 21

8:30 a.m. to 10:00 a.m.

Session A

Theoretical Perspectives on Boundary Maintenance in Intimate Relationships

"Jealousy and Trust: Unexplored Dimensions of Social Exchange Dynamics," *Gerald W. McDonald* and *Marie Withers Osmond*, Florida State University

"Friendship and Marriage: An Interactional, Developmental Perspective," *Judith L. Fischer*, *Donna L. Sollie*, and *Jane Cardea*, Texas Tech University

Discussants: *Carla B. Howery*, University of Wisconsin-Milwaukee and *Michael P. Johnson*, Pennsylvania State University

Presiding: *Marilyn Ihinger-Tallman*, Washington State University

Session B

Practicum on Research Design and Execution

"The Management of P-Technique with Marital Dyads," *Marsha L. Roberts*, Washington State University

Discussants: *David M. Klein*, University of Notre Dame and *Murray A. Straus*, University of New Hampshire

Presiding: *William T. Southerly*, Purdue University

Session C

The Family's Conception of Itself

"Family Identity and Normalcy: An Exploration," *Katrina Johnson*, University of Notre Dame

"Family Pride," *Elizabeth Socha Davis*, University of Wisconsin-Madison

Discussants: *Karen Altergott*, University of Minnesota and *Orjan Hultaker*, Uppsala University

Presiding: *Dennis Guernsey*, Fuller Theological Seminary

10:30 a.m. to 12:00 noon

Session D

Conundrums of Interaction, Perception, and Meaning in Marriage and Family Life

"Topographical Analysis of Marital Interaction," *James M. White*, University of Calgary

"Paradoxes, Double-binds, and Reflexive Loops: A Comparison of Two Theoretical Perspectives and a Suggested Methodology," *Vernon E. Cronen*, *Kenneth M. Johnson*, *John Lannamann*, and *W. Barnett Pearce*, University of Massachusetts

Discussants: *Mary Fitzpatrick*, University of Wisconsin-Madison and *David H. Olson*, University of Minnesota

Presiding: *Richard J. Gelles*, University of Rhode Island

Session E

Removing Obstacles to the Utility of Exchange Theory for the Analysis of Marriage and Family Life

"Conceptual Issues in the Integration of Economic and Social Exchange Theories for Application to Family Research," *Kathryn D. Rettig*, University of Illinois

"Beyond Utilitarian Exchange: Toward an Interpretive Theory of Exchange and Power," *Kenneth E. Morris*, University of Georgia
 Discussants: *Ephraim Frankel*, University of Wisconsin-Madison and *Thomas A. Cornille*, Florida State University

Presiding: *Maximiliane Szinovacz*, Florida State University

Session F

Rationality and Reproduction

"The Process of Decision-Making and Fertility," *Jan Trost*, Uppsala University

Discussants: *Pauline Boss*, University of Wisconsin-Madison and *Gary R. Lee*, Washington State University

Presiding: *Brent C. Miller*, Utah State University

PRE-CONFERENCE WORKSHOPS CONTINUED
THEORY CONSTRUCTION AND RESEARCH METHODOLOGY
TUESDAY, OCTOBER 21 CONTINUED
 1:30 p.m. to 3:00 p.m.

Session G

Competent Persons and Intimate Relationships

"Distinctiveness of Interpersonal Competence in Long-Versus Short-Term Relationships," *Erik Filsinger*, Arizona State University
 "Personality and Marriage: Toward a Theoretical Linkage," *William J. Doherty*, University of Iowa
 Discussants: *Lyle E. Larson*, University of Alberta and *Sharon Price-Bonham*, University of Georgia
 Presiding: *Charles Cole*, Iowa State University

Session H

The History and Future of Theorizing About the Family in Sociology and Psychology

"Family Theory: From Roots to Falling Leaves," *Darwin L. Thomas* and *Jean E. Kleber*, Brigham Young University; and *Richard Galligan*, University of Akron
 Discussants: *Joan Aldous*, University of Notre Dame and *Carl Fred Broderick*, University of Southern California
 Presiding: *Viktor Gecas*, Washington State University

Session I

Intergenerational Linkages in Individual and Family Development

"Lineages as Units of Analysis: New Avenues for the Study of Individual and Family Careers," *Gunhild O. Hagestad* and *Roger A. Dixon*, Pennsylvania State University
 Discussants: *Glen Elder*, Cornell University and *Roy Rodgers*, University of British Columbia
 Presiding: *Judith O. Hooper*, University of Wisconsin-Madison

3:30 p.m. to 5:00 p.m.

Session J

The Effects of Family Relationships on Personality and Its Development in the Adolescent and Young Adult Years

"Familial Contexts of Adolescent Development," *Stuart Hauser*, *Sally Powers*, *Joseph Schwartz*, *Alan Jacobson*, and *Gil Noam*, Harvard University
 "Changing Family Relationships and Psychological Development During the Young Adult Years," *Kathleen M. White* and *Joseph C. Spiesman*, Boston University
 "Family Influence on Well-Being from Late Adolescence to Early Adulthood," *Jeylan T. Mortimer* and *Jon Lorence*, University of Minnesota
 Discussants: *Gary W. Peterson*, University of Tennessee and *Lynda Henley Walters*, University of Georgia
 Presiding: *Luther B. Otto*, Boys Town Center for the Study of Youth Development

Session K

Beyond the Limits of Logical-Positivism

"Toward a Critical Science of the Family," *Beatrice Paolucci* and *Margaret M. Bubolz*, Michigan State University
 Discussants: *Anton Jacobs*, University of Notre Dame and *David A. Schulz*, University of Delaware
 Presiding: *Marie Withers Osmond*, Florida State University

Session L

Issues in Analyzing Data on Marital Quality

"Sexual Tensions and Satisfaction as Dimensions of Marital Quality," *Vaughn R. A. Call*, Boys Town Center for the Study of Youth Development
 "Multicollinearity: Problems and Solutions—Application to a Model of Marital Satisfaction," *Jeannie Kidwell*, Texas Tech University and *Lynn Brown*, Purdue University
 Discussants: *Wesley R. Burr*, Brigham Young University and *Robert Larzelere*, University of New Hampshire
 Presiding: *Graham B. Spanier*, Pennsylvania State University

8:00 p.m. to 9:30 p.m.

Theory and Methods Workshop Business Meeting
 Presiding: *David Klein*, University of Notre Dame

WEDNESDAY, OCTOBER 22

8:30 a.m. to 10:00 a.m.

Session M

Theorizing About Parenthood

"A Theoretical Model of Differential Parenting Inputs for Children with Special Needs," *Barbara H. Settles*, University of Delaware
 Discussants: *Victor A. Christopherson*, University of Arizona and *Anita Sue Kolman*, Augsburg College, Minneapolis
 Presiding: *Candace S. Fake*, Burlington County College, New Jersey

Session N

Order, Conflict, and Violence in the Family

"Family Conflict and Evolutionary Theory," *Jetse Sprey*, Case Western Reserve University
 "A Developmental Approach to Family Violence: A Theoretical Integration," *Nancy Sederberg*, Valparaiso University
 "Demystifying the Double Bind: Patterned Disorder in Domestic Violence," *Linda Harris* and *Murray Straus*, University of New Hampshire
 Discussants: *David Fournier*, Oklahoma State University and *Stephen Jorgensen*, University of Arizona
 Presiding: *Keith Farrington*, Whitman College

Session O

Coordinating Work and Family Careers

"Work-Family Life Cycles," *Patricia Voydanoff*, Merrill-Palmer Institute
 "The 'Life-Cycle Squeeze' Concept: An Appraisal," *Phyllis Moen*, Cornell University
 Discussants: *John Scanzoni*, University of North Carolina-Greensboro, and *Irving Tallman*, Washington State University
 Presiding: *Dianne Kieren*, University of Alberta

10:30 a.m. to 12:00 noon

Session P

Refinements and Applications of Family Role Transition Theory

"Building Developmental Theory: A Propositional Inventory About Stepfamily Transitions," *Craig L. Roberts*, Arizona State University
 "A Theory of Ease of Role Transitions in the Acquisition of the Filial Role in Middle Age," *Helen J. Mederer*, University of Minnesota
 Discussants: *Ann Jache*, University of Notre Dame and *Candyce Russell*, Kansas State University
 Presiding: *Geoffrey K. Leigh*, University of Iowa

Session Q

Practicum on the Travails of the Family Theorist

"Problems in Unifying Theory: The World Through Four-Color Glasses," *Larry L. Constantine*, Tufts University
 Discussants: *Bert N. Adams*, University of Wisconsin-Madison and *Robert Ryder*, University of Connecticut
 Presiding: *Reuben Hill*, University of Minnesota

Session R

Theorizing About Post-Divorce Adjustment and Remarriage

"Building Theory About Post-Divorce Adjustment," *Randal D. Day*, South Dakota State University and *Helen J. Raschke*, Austin College, Texas
 "A Theory of Mate Selection Among Divorced Women," *Jean Atkinson*, Pennsylvania State University and *Maximiliane Szinovacz*, Florida State University
 Discussants: *Gay C. Kitson*, Case Western Reserve University and *Philip R. Kunz*, Brigham Young University
 Presiding: *J. Ross Eshleman*, Wayne State University

POST CONFERENCE WORKSHOP

FAMILIES OF DIVORCE

Dr. Robert Menninger, The Menninger Foundation, Topeka, Kansas, will present a one-half day workshop on Saturday afternoon, October 25. Dr. Menninger is concerned with educating parents to realize the stress divorce places on their children. Courts and judges send families to the Menninger Foundation before divorce occurs. He offers two-day workshops for the whole family, at which parents as well as children are encouraged to talk. He is also interested in the violence that may occur with divorce. The NCFR workshop will deal in particular with his methods for helping families handle their pain. The Family Therapy Section is sponsoring this special session. Pre-registration is required. Family Therapy Section members may attend without cost; for others the cost is \$10.00.

NCFR AFFILIATED COUNCILS ACTIVITIES

TUESDAY, OCTOBER 21

6:30 p.m. to 9:00 p.m.

Affiliated Councils Forum and Dinner

Annual Business Meeting

Presiding: *Leo Hawkins*, North Carolina State University, Raleigh
Address: "The COFO Family Violence Project," *Wallace C. Fulton*, Equitable Life Assurance Society, New York City

WEDNESDAY, OCTOBER 22

9:00 a.m. to 12:00 noon

Membership Workshop for Affiliated Councils Chairs

Leaders: *Leland Axelton*, Virginia Tech, and *Donna Berardo*, Florida Junior College at Jacksonville

NCFR COMMITTEE AND BOARD MEETINGS

TUESDAY, OCTOBER 21

1:00 p.m. to 2:00 p.m.

NCFR Finance Committee

Presiding: *Kate Garner*, Greensboro, North Carolina, NCFR President-Elect

2:00 p.m. to 6:00 p.m.

NCFR Publications Committee

Presiding: *William C. Nichols*, private practice, Birmingham, Michigan

3:00 p.m. to 6:00 p.m.

NCFR Membership Committee

Presiding: *Leland Axelton*, Virginia Tech

WEDNESDAY, OCTOBER 22

8:00 a.m. to 9:00 a.m.

1980 NCFR Nominating Committee

10:00 a.m. to 11:00 a.m.

Student and Young Professional Representatives

Presiding: *Carolyn Love*, J. C. Penney Company, New York City

10:00 a.m. to 12:00 noon

Journal of Marriage and the Family Editors' Meeting

Presiding: *Felix M. Berardo*, University of Florida

Family Relations Editors' Meeting

Presiding: *James Walters*, University of Georgia

Journal of Family History Editors' Meeting

Presiding: *Tamara Hareven*, Clark University

Monograph Series Editors' Meeting

Presiding: *John Scanzoni*, University of North Carolina-Greensboro

1:00 p.m. to 5:30 p.m.

1979-80 NCFR Board of Directors Meeting

Presiding: *Ira L. Reiss*, University of Minnesota, NCFR President

1:00 p.m. to 2:30 p.m.

Round Table Leaders Orientation

Presiding: *Sharon Price-Bonham*, University of Georgia

5:30 p.m. to 6:30 p.m.

Student Representatives Meeting

Presiding: *Carolyn Love*, J. C. Penney Company, New York City

THURSDAY, OCTOBER 23

7:00 a.m. to 8:30 a.m.

NCFR White House Conference on Families Committee

Presiding: *Sharon Alexander*, National Association of State Boards of Education, Washington, D.C.

7:30 a.m. to 8:30 a.m.

Journal of Family Issues Editors' Meeting

Presiding: *Graham Spanier*, Pennsylvania State University

FRIDAY, OCTOBER 24

7:00 a.m. to 8:30 a.m.

1981 Annual Meeting Program Committee

Presiding: *Sharon Price-Bonham*, University of Georgia

SATURDAY, OCTOBER 25

1:00 p.m. to 2:30 p.m.

1980-81 NCFR Board of Directors

Presiding: *Kate Garner*, Greensboro, North Carolina, 1980-81 President

FOCUS GROUPS MEET

Several focus groups will meet during the Annual Meeting. Please check the final program for the location of the Focus Groups Headquarters. Anyone who has an interest in these particular topics is invited to meet with the respective groups.

Law and the Family, Wednesday, October 22, 1:30-2:30 p.m., *Stephen Bahr*, Brigham Young University, presiding.

Health and the Family, Wednesday, 2:30-3:30 p.m., *William J. Doherty*, University of Iowa Medical School, presiding.

Middle-age and Middlecence, Wednesday, 3:30-4:30 p.m., *Dean K. Hoffman*, Indian Health Service, Reno, Nevada, and *Rosalie Ackerman*, Iowa State University, presiding.

Adoption, Wednesday, 4:30-5:30 p.m., *G. C. Sponaule and Hamilton McCubbin*, University of Minnesota, presiding.

Aging, Thursday, October 23, 12:00 noon-1:00 p.m., *James De Burger*, University of Louisville, presiding.

Divorce and Divorce Reform, Thursday, 1:00-2:00 p.m., *Emily Brown*, Divorce and Marital Stress Clinic, Alexandria, Virginia, presiding.

Single Parent Families, Friday, October 24, 8:00-9:00 a.m., *Joan Hess Russell*, Single Parents on Campus and Community, Boulder, Colorado, presiding.

Marriage Enrichment, Friday, 9:00-10:00 a.m., *Anna L. Cole*, Marriage Counseling Associates, Ames, Iowa, and *David and Vera Mace*, ACME, Winston-Salem, North Carolina, presiding.

Divorce and Divorce Reform, Friday, 12:00 noon-1:00 p.m., *Helen Raschke*, Austin College, Texas, presiding.

MINORITIES SESSIONS

The Minorities Section will meet on Thursday, October 23 from 8:30-10:00 a.m. The business meeting and social hour will be Friday, October 24, from 5:00-6:00 p.m. *David Baptiste*, New Mexico State University, Minorities Chair, is planning these sessions.

OTHER SIGNIFICANT FEATURES AT THE ANNUAL MEETING

RECEPTION—Plan to socialize with NCFR members at a reception on the opening day, Wednesday, October 22, from 5:30 to 7:15 p.m. This event is being planned for your enjoyment by *Mary Cramer*, *Shari Davis* and *June Henton*, Oregon State University.

ALUMNI CELEBRATION—Be sure to come to the Alumni Celebration, the NCFR Annual Meeting Party, on Thursday evening, Oc-

tober 23, 8:30 p.m. to midnight. The **Celebration**, sponsored by the Students of NCFR, will feature tables set up by region of schools, music, cash bar and refreshments. Eight regional representatives will be helping to coordinate this party. Contact *Candace Fake, Burlington County College, E.C. 115, Pemberton, NJ 08068 (609-894-9311, Ext. 203)* if you wish to participate actively in helping with the Celebration. Hope to see you there!

A SCENIC AUTUMN TOUR OFFERED:

The Columbia River Gorge, the Columbia River Historic Highway, a coffee break at the charming Columbia River Gorge Hotel built in the Twenties, Mt. Hood Loop Drive, scenic Hood River Valley, Mt. Hood with Timberline Lodge at its base, a Bavarian dinner at the Lodge, an enchanting sunset and then picturesque Portland seen at night resting quietly on the banks of the Willamette River—all this is for your enjoyment on Thursday, October 23, from 2:00 p.m. to 10:00 p.m. by tour bus with driver guide leaving from the Hilton Hotel. *Helen Hartness, Lewis and Clark College*, has selected a delightful buffet dinner at Timberline Lodge. However, for those who do not wish to have dinner there, special buses will cover the same route, but will return following the visit to Timberline, arriving at the Hilton, around 8:00 p.m.

You will enjoy the 35-mile panoramic view from the Crown Point, high above the mighty Columbia, and Multnomah Falls cascading 620 feet to the Gorge floor. At the 6,000 foot level of Mt. Hood, you will view Mt. Jefferson and several other high Cascade mountains with new fallen snow. The return trip from the mountain will continue through forests and farm countryside to Portland.

A NIGHT AT THE CABARET—This colorful cabaret social event with delicious and appropriate foods and beverages available during the evening will follow the Presidential Address on Friday evening, October 24. A snappy Combo orchestra will provide music for dancing and general enjoyment. Plan to spend a fun evening with *President Ira Reiss* and your many friends. This event will take place at the Hilton Hotel. *Helen Hartness*, is chair of this event.

EMPLOYMENT SERVICE—Do not miss the once-a-year opportunity to post your department's or organization's vacancies at this largest gathering of qualified professionals, the NCFR Annual Meeting. This will also be the ideal occasion to make that job change which you may have been contemplating. NCFR's Annual Meeting Employment Service, complete with interview room and message center (sans usual photocopier,

however) will be functioning in its usual effective manner in Rooms 323-324 at the Portland Hilton. To list with the employment service as either a candidate or an employer, write, requesting the appropriate form, to *Betty C. Morrison, Coordinator, NCFR Employment Service, 1219 University Avenue SE, Minneapolis, MN 55414*. Only two copies of candidates' vitae will be required this year.

TAPES—*Jerry Lienknecht* of Salt Productions, Meridian, Idaho, will be taping all major sessions of the Annual Meeting. These tapes will be available in the Book Exhibit Room for \$4.00 each immediately after each session.

BOOK EXHIBIT—*Harve Horowitz* is heading up this exhibit. Use the form at the end of the Newsletter to let Mr. Horowitz know what you have published, or write your publisher directly.

FILM EXHIBIT—Plan to visit the film and filmstrip exhibit to view new materials available this year. You will want to see in particular the award-winning entries in the NCFR Annual Film and Filmstrip Competition. The conference exhibit is chaired by *Deryck Calderwood*, New York University, and *Martha Calderwood*, C.M.D.N.J., New Jersey Medical School, Newark.

INTERNATIONAL HOUSING—Housing in private homes will be available for delegates coming from other countries. *Sherry Boyd*, University of Oregon Health Sciences Center, Portland, is chair.

PLEASE NOTE—Due to circumstances beyond our control, NCFR will NOT have its own conference photocopier this year. The Portland Hilton does have a photocopying center for its guests, but plan to allow yourselves sufficient time, and change, for its use.

PORTLAND ATTRACTIONS

Tour Portland's unique Pittock Mansion, located 1,000 feet above the city and the Willamette river, with sweeping views of the city of Portland, four snow-capped mountains, and two states. The former home of the first owner of the Oregonian newspaper is a must to see for visitors. Located at 3229 NW Pittock Drive, Portland, Oregon 97210.

The International Rose Test Gardens in Washington Park are one of the most spectacular sights in the city, featuring over 10,000 varieties of roses. The Western Forestry Center, also located in Washington Park, has a talking tree conceived to act as the spokesman for all trees to emphasize the partnership of the forest industry and nature to maintain a vigorous productive and renewable timber source. The Forest Store, located in the center, specializes in the very

rare and beautiful Oregon Myrtlewood, which grows on the southern coast of Oregon. Located at 4033 SW Canyon Road, Portland, Oregon 97221,

While visiting Washington Park, be sure to see the Portland Zoo. The Portland Zoo is world-renowned for its reproductive elephant herd.

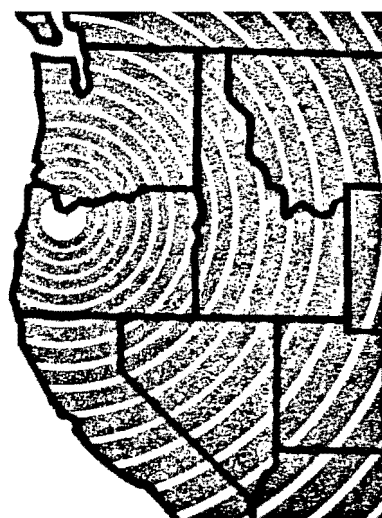
The Japanese Gardens also located in Washington Park contain five formal gardens which recapture the mood of ancient Japan, meandering over 5-1/2 acres of woodland that opens onto a breathtaking view of Portland and the mountains beyond.

The Oregon Museum of Science and Industry, another Washington Park feature, is an experiment in living science. More than a museum, OMSI is a full-scale science education center specializing in the hands-on approach to learning. Science enrichment classes, summer camps, seminars, field trips and laboratory research give students of all ages first-hand proof that "Science is fun."

The Portland Art Museum can be a highlight of a visit to Portland. Permanent collections include European paintings and sculptures, dating from the Renaissance to the Twentieth century. Nineteenth and Twentieth century American painting and sculpture, English silver, Northwest Coast Indian, pre-Columbian, Cameroon, West African, Asian, and classical Greek art. The Museum Gift Shop has interesting replicas of museum jewelry, books, crafts, and prints for enthusiastic collectors.

The Oregon Historical Society with its library and museum of early Oregon photos, books, and artifacts makes an interesting stop on any tour.

PORTLAND WELCOMES NCFR



NCFR AFFAIRS

WHITE HOUSE CONFERENCE ON FAMILIES

The main purpose of this White House Conference will be to examine the strengths of American families, the difficulties they face, and the ways in which family life is affected by public policies. The Conference will examine the important effects that the world of work, the mass media, the court system, private institutions and other major facets of our society have on American families.....*President Jimmy Carter*, January 30, 1978

The final gavel has fallen on the last of three regional White House Conferences on Families. It is all over now except the compiling, assessing, and hopefully, legislating. Whether President Carter's stated purpose of the WHCF achieved fruition is still a matter of conjecture and, on the part of a majority of the delegates, optimism.

We have all followed with rapt interest media accounts of recommendations passed in Baltimore, Minneapolis, and Los Angeles ...accounts which were spiced in the usual way of media hype with descriptions of dissent and walk-outs among the delegates. There was indeed an organized group who cried "Rigged" at each of the conferences; however, their combined voice was but a whimper compared to the voices of the majority of delegates, who represented every facet of American life, and whose sincerity was palpable. Sixty percent were not professionals in family-related fields; 13% were from low-income families (less than \$8,000 annually); and 25% represented racial minorities. For the first time these people were offered a forum in which to express their concerns for the needs of the most important element in their lives: their families. Most, who had never before made a public address, spoke eloquently and to effect.

There was the young couple who had driven to Minneapolis from Illinois with their 6 months' old baby. The mother was the delegate. The father tended the baby. There was the woman from Tennessee, a poverty-level single parent, whose 18 months' son was at her side at all times. And there was the blind delegate, attended by husband, infant, and seeing eye dog. In addition, there was an 80 year old black woman from Detroit, impressive with dignity and age. And most of all, there was the black man from Indiana who, after hearing critical comments concerning federal government intervention in the family area, proclaimed, "I thank God for the federal government! If it were not for the federal government, we wouldn't be

here now. If everything was left at the community level, my people would be where they were 140 years ago."

Those people are what the White House Conference on Families was all about.

Betty Morrison, NCFR Staff

The three White House Conferences on Families which were held in Baltimore (June 5-7), Minneapolis (June 19-21), and Los Angeles (July 10-12), each approved more than 55 recommendations on how to strengthen, assist, and protect families in our society. For example, the delegates at all three conferences strongly supported the development and implementation of substance abuse programs, the importance of studies assessing the impact of public policies on the family, help for families with handicapped members, and increased availability of child care.

There were over 500 delegates at each conference, as well as press, invited guests, and observers from the general public. There were three stages for developing, approving and prioritizing recommendations: issue groups, topic groups, all delegates. To begin, the delegates were divided into 20 different issue groups to develop recommendations and prioritize their top three to be sent to the topic groups. Next, the delegates were divided into four topic groups to discuss and approve these recommendations. Then, approved recommendations were heard, discussed and voted on by all delegates. The votes were tallied and rank ordered according to the number of affirmative votes each received, thereby prioritizing them for the entire conference.

There were three major controversial issues at each conference: 1) abortion, 2) the ERA, and 3) the definition of "family." Abortion as an alternative was accepted at the conferences, but by slim margins. Although the ERA was endorsed, it also received many negative votes. The issue of defining the "family," in which inclusion or exclusion of homosexuality was the critical factor, was sidestepped in Baltimore and Los Angeles. Only in Minneapolis was family defined, using the definition of persons related by blood, heterosexual marriage or adoption. Because these issues were controversial and split the delegates, they are low on the list of priorities for future action.

To assess the recommendations made by the three conferences, a task force will meet in Washington, D.C., August 19-20. This group will consist of 55 delegates from the states and territories, the 40 members of the National Advisory Committee, and 22 at-large delegates appointed by the Conference chair. *Kate Garner* will be on the task force, representing North Carolina. *Ruth Jewson* will be an at-large delegate.

If you would like to hear more about

the WHCF, there will be two sessions at our conference in Portland on this topic, and we invite you to attend. We will keep you posted on further developments.

Sharon Alexander, Chair, NCFR White House Conference on Families Committee

STUDENT NEWS AND VIEWS

All members of NCFR who attend the Annual Meeting in Portland can experience the benefits of two student-sponsored "big events"! One is the student-sponsored Plenary Session with *Dr. Urie Bronfenbrenner* and his colleague, *Dr. Moncrieff Cochran*. The other is the Alumni Celebration, Thursday evening, for all members, sponsored by the student membership. The Celebration will feature tables set up by region of school, music, a cash bar and refreshments. These second annual student-sponsored events promise to be both stimulating and fun. We hope to see you there.

Student members can attend the Student and Young Professional Business Meeting Friday from noon to 1:00 p.m., visit our Lounge Room, and can be a part of the employment service by writing *Betty Morrison* at the NCFR office. Congratulations to all student members involved in presenting research or participating in the exchange of ideas at the conference.

Several key ideas came from the Student Membership Lapse Study we conducted. These will be reported at the Board meeting in October. The hard work of this year's representatives recently stimulated some encouraging responses from different student members. One student member wrote "I just want to mention that I'm pleased to note that NCFR gives student representatives a place on committees, councils, and the Board of Directors. It is good to see that students are encouraged to participate and that their special needs/interests are recognized." Another wrote, "I have been impressed with student involvement and representation to date. I am most satisfied with my student membership in NCFR." We appreciate these comments and encourage any feedback.

Let us once again restate our desire to help you be as involved as possible and to have effective input. Send us a line or give us a call. The addresses and phone numbers of your student reps are below:

Carolyn Love, Educational Relations, Consumer Affairs Department, J.C. Penney Company, Inc., 1301 Avenue of the Americas, New York, NY 10019 (212-957-0286)

Steve Elliott, Department of Psychiatry (Marital Health Section), Bowman Gray School of Medicine, Winston-Salem, NC 27103 (919-727-4281)

Nancy Bueche, Department of Child Development and Family Relations, University of North Carolina, Greensboro, NC 27412 (919-855-3925)

Jeri Hepworth, 28-C Anton Road, Storrs, CT 06268 (208-487-0674)

MANUSCRIPTS FOR THE NCFR-SAGE MONOGRAPH SERIES

Manuscripts (130 to 300 typed pages) are solicited for publication in the NCFR-SAGE Monograph Series. The series welcomes a variety of types of work from scholars in all disciplines dealing with any aspect of family in its broadest possible senses, including qualitative or quantitative empirical studies; theoretical or methodological treatises; public policy or clinical analyses; and cross-cultural or historical studies. An author should submit TWO copies of a manuscript for consideration to the Series Editor, *Professor John Scanzoni, Stone 207, University of North Carolina, Greensboro, NC 27412.*

CALL FOR PAPERS

Family Relations: Journal of Applied Family and Child Studies announces the publication of a special issue on "Family Life Education" for October 1981. Guest editors will be *J. Joel Moss and Ruth E. Brasher*. The issue will focus on both substantive and process materials. Family life educators, researchers, therapists, physicians, anthropologists, sociologists, psychologists, attorneys, health educators, and policy makers are encouraged to submit.

Send three (3) copies of your manuscript, 10-20 pages, double spaced, no later than December 31, 1980 to *Drs. J. Joel Moss and Ruth E. Brasher, College of Family Living, Brigham Young University, Provo, UT 84602.*

BLACK FAMILIES

The 1980 *Directory of Professionals and Researchers in the Area of Black Families*, including child socialization and child-rearing has been completed for the NCFR by *Marie F. Peters*. To order your copy, send \$1.50 to her at *Toddler-Infant Experiences Study, 1322 Webster Street, Oakland, CA 94612.*

AGGRANDIZE NCFR

Our organization can only be as renowned as you, our illustrious members, choose to make it. When a biography, no matter how brief, is requested, please remember to list your membership in the National Council on Family Relations among your credits. Be an NCFR name-dropper!

WANTED

Kate Garner, NCFR President-elect, needs the following issues of *The Family Coordinator*: 1971, July and October; 1972, July and October. If you can give or sell her these four copies, please write her at: *11 Piccadilly Circle, Greensboro, NC 27410.*

IN MEMORIAM

Gladys Hoagland Groves, a pioneer among educators in counseling on sex and marriage and former professor of family relations at University of North Carolina at Chapel Hill, died in July at Bayside Hospital in Virginia Beach, Virginia. She was 86 years old and lived in Virginia Beach.

Mrs. Groves was co-founder with her late husband, Ernest R. Groves, of the Groves Conference on Marriage and the Family. She was the author of "Marriage and Family Life," published in 1942, a college textbook, and co-author with Dr. R. A. Ross of "The Married Woman," published in 1936, and republished in 1942 as "A Practical Guide to a Happy Marriage."

She and her husband, who died in 1946, were past presidents of the NCFR. They also wrote a number of books on preparation for marriage and sex counseling which have been used as texts or reference works in college courses.

In recent years, after her retirement from university teaching, she had taught at elementary schools in Virginia Beach.

William D. Ferguson, of San Jose, California, passed away recently. He was a counselor in private practice, and had been a NCFR member for several years.

NCFR AFFILIATED COUNCILS

Regional Representatives: *Leo F. Hawkins*, chair, Affiliated Councils, has appointed *Helen Hartness*, Oregon, to review the work of Regional Representatives. She will make a report at the Portland meeting.

ARIZONA, TUCSON: A balanced 18 member delegation represented Arizona at the White House Conference on Families (WHCF) in Los Angeles. Included was *Frank Williams*, Tucson Council president, *Cooperative Extension Service, University of Arizona, Tucson, AZ 85721*...As a prelude to programming, the Council is discussing this year the nine ground rules for family policy development and formulation prepared by *Robert Rice*, Director of the Division of Policy Analysis and Development, Family Service Association of America.

CALIFORNIA: The CCFR Annual Meeting will be held at the Sheraton Santa Barbara Hotel and Spa in Santa Barbara, September 26-28, with *Bob Perry* serving as conference chair. *Frank Cox* is local arrangements chair. The theme will be "The Family: Its Challenges and Strengths." Speakers will include *Marcia* and *Thomas Lasswell*, making a presentation on "Positive Directions for the Family," and *California State Assemblyman John Vasconcellos*, speaking on "Moving Toward a More Nour-

ishing Individual and Family Context."... The CCFR has adopted an attractive new logo...The Council is preparing a new membership directory to be made available to members at cost. President is *Nona Cannon, 3904 Milan Street, San Diego, CA 92103.*

GEORGIA: In the latest issue of the GCFR Quarterly Report (July 1980), *Don Bower*, president, *P.O. Box 4061, Ft. Valley State College, Ft. Valley, GA 31030*, asks members whether the Council should play an advocacy role regarding social issues affecting families, in addition to the traditional state council role. He suggests that the Georgia Council can positively affect legislation and social policy by making its positions known to other professional groups and policy makers.

INDIANA: The ICFR's attractive membership brochure lists the following services: Annual Meeting (with major speakers, workshops, round tables, book exhibit, *Betty Jackson Student Award*, Family Life Award, teacher exchange, and film previews); Newsletter (with schedules of other conferences, Indiana legislative news, job exchange, book reviews, and items of interest); and a Speaker's Bureau. President is *Howard Kauffman, Goshen College, Goshen, IN 46526.*

LOUISIANA: *Hamilton McCubbin*, University of Minnesota, addressed several issues in regard to family stress and coping strategies at the Annual Meeting in February. President is: *Zoe Ann Sparks, Family Life and Environment, School of Home Economics, Louisiana State University, Baton Rouge, LA 70803.*

MINNESOTA: The MnCFR's Annual Meeting will be held on December 12. *Robert Lepp* has announced that the theme will be "People Helping Themselves." President is *Linda Budd, 2261 Gordon Avenue, St. Paul, MN 55108.*

MISSISSIPPI: Officers include *Frances McCuffee, P.O. Box 4054, Clinton, MS 39058*, president; *Louella Milner*, president-elect; *J. Gipson Wells*, second vice-president; *Lynette Tuggle*, secretary-treasurer; *Bettye R. Coward*, newsletter editor; and *Gerald Buchanan, Bernice C. Griffin*, and *Doris R. Chambers*, directors.

NEW JERSEY: A New Jersey Council conference is planned for October 4 at Stockton State College, Pomona, New Jersey, on the theme of "Sex Education and Sex Research: What Relationship?" *Ira L. Reiss*, NCFR President, will be the keynote speaker. Concurrent sessions led by Council members will be held. *Rose I. Ford, 94 Market Street, Salem, NJ 08079* is president.

NORTH CAROLINA: *Mel Markowski*, president, *School of Home Economics, East*

Carolina University, Greenville, NC 27834, in an extensive article in The Council Record, discusses the WHCF. He says in conclusion: "In order to continue the concern for families that the State and National Conferences on Families has generated, the North Carolina Family Life Council is taking the following steps: (1) It is devoting the present issue of the Council Record to the White House and State Conferences on Families. (2) It will build the Annual Meeting on September 19-20 in Charlotte around the White House Conference themes. (3) It will publish a final report on the WHCF's recommendations and implementation in a future issue of the Council Record. Finally, the North Carolina Family Life Council expresses its appreciation to the President of the U.S., the Chair and Executive Secretary of the WHCF, the Governor of North Carolina, the State Coordinator and the Co-chairs of the State Conference, and to each of the 165 North Carolina Families Task Force members for the time, energy and thoughtfulness that went into developing the North Carolina Families Task Force Report. It is a document that the families of North Carolina can look to with pride."

NORTH CAROLINA-GREENSBORO: The Annual Meeting of the Family Life Council of Greater Greensboro was held April 22. Grady Nutt, television personality, author of *Family Time*, and humorist, was guest speaker. The Council continues to offer a wide variety of programs at the community level. *Claudette Burroughs, 1301 North Elm Street, Greensboro, NC 27401* is president.

SOUTHEASTERN: The 1980 annual edition of "Books of Interest to Family Specialists: A Classified and Annotated Bibliography," prepared by John T. Greene and John H. Curtis, is available for \$5.00 from Dr. Greene at 2918 Woodside Drive, Tallahassee, FL 32312...*Michael Sporakowski, 201 Wallace Annex, Virginia Tech, Blacksburg, VA 24061* is Council president.

TEXAS: New officers have been announced. *Nelwyn Moore, Department of Home Economics, Southwest Texas State University, San Marcus, TX 78666* is president. Loy M. Simpkins, Baylor University School of Law, is president-elect. Jenny Reinhardt is secretary. Nancy V. Wedemeyer is treasurer...The Texas Council had "Families: Foundation of the Future" as its Annual Meeting theme. John and Tommie Lawhon were conference chairs...The TCFR has adopted a statement on family life education which resolves "That a comprehensive and sequential Family Life program which actively involves parents and communities should be a planned part of the public school curriculum from pre-school through college; That the Texas Council assisted by other interested groups provide a

network of in-service programs to raise the level of knowledge and skills of present teachers and persons interested in working with families; That when appropriate, the Texas Council promoted the establishment of community-wide Family Life Education programs involving cooperation of the family, church, school and family — serving agencies and individuals; That the Texas Council in cooperation with other interested professional groups in Texas adopt a set of Family Life Education competencies that may ultimately be included in all teacher preparation programs in Texas."

WISCONSIN: The Annual Meeting of the WCFR will be held November 7-8 at the Civic Center Inn, Eau Claire, on the theme "The Quality of Family Life in the 1980s." J. Kenneth Davidson, Sr., University of Wisconsin-Eau Claire, is conference chair...President *Chuck Adam, Family Service of Milwaukee, 2819 West Highland Boulevard, Milwaukee, WI 53208*, recently included the following comments in a letter to WCFR members: "WCFR is beginning a real process of change from what it used to be as the Wisconsin Family Life Association. There is energy here in ways which I haven't experienced before. It is characterized by a lot of intangibles which I value: like an appreciation of collaboration between professionals and non-professionals, between academicians and clinicians, between theorists and practitioners. Something in the form of new energy is bubbling from the bottom up. The group process is at work here, modeling the involvement of the grass roots movement...Where we will go remains to be seen. We will need the strong backing of the established long-time members to help determine the best possible directions. And, your immediate opportunity is in the Annual Meeting, making presentations of your knowledge. Grass roots energy is fine; but it needs to be informed by the establishment's wisdom!"

POSITIONS AVAILABLE

ALABAMA:

AUBURN UNIVERSITY: Director of Marriage and Family Therapy Master's Program and Assistant Professor, tenure track. Appointment: 9 months in Department of Family and Child Development, School of Home Economics, Auburn University, Auburn, AL 36849.

Salary and rank commensurate with qualifications and experience. Earned doctorate in family relations and/or marriage and family therapy. Experience in teaching undergraduate and graduate level courses preferred. Strong background in teaching, research, and publication. Direct masters' theses and supervise graduate students' practicum experiences. Supervisor's status in

AAMFT preferred. The Auburn MFT program has full accreditation from AAMFT.

Starting date: January 1, 1981. Apply with resume, transcript, and 3 letters of recommendation by November 1, 1980, or until qualified candidate is found, to: Dr. Mary Lou Purcell, Professor and Head, Department of Family and Child Development, School of Home Economics, Auburn University, Auburn, AL 36849.

For additional information, call Dr. Purcell at 205-826-4151.

Auburn University is an Equal Opportunity Employer.

BRITISH COLUMBIA, CANADA:

UNIVERSITY OF BRITISH COLUMBIA: Family Science. Assistant professor, tenure track position. Graduate and undergraduate courses in Contemporary Family, Family Research Methods, and other courses to be determined in family area. Successful applicant must be competent in computer techniques and will be expected to serve as consultant on computer methods for other faculty in the School. New building scheduled for completion 1981-82 with excellent teaching and research facilities. Freedom to develop own research program. Experience in the Canadian setting preferred. The Family Science program at the University of British Columbia emphasizes life-span human development within the context of the family. Appointment effective July 1, 1981. Starting salary negotiable. Filling of this position is subject to final authorization for funding by the University. The University of British Columbia is an equal opportunity employer. Send curriculum vitae, references, publications, and letter describing current scholarly interests to: R. H. Rodgers, Ph.D., Director, School of Home Economics, 6221 University Boulevard, University of British Columbia, Vancouver, BC V6T 1W5.

UNIVERSITY OF BRITISH COLUMBIA: Human Development/Family Sciences. Professor/Associate Professor. To provide leadership in newly approved graduate program in Family Studies which begins September 1981. Must have extensive experience in teaching at the graduate level and established scholarly record. Teaching at both the graduate and undergraduate level. Freedom to pursue own research program. New building with excellent research and teaching facilities scheduled for completion 1981-82. Experience in the Canadian setting preferred. The Family Studies program at the University of British Columbia emphasizes life-span human development within the context of the family. Appointment effective July 1, 1981. Salary subject to negotiation. Attractive teaching load, research leave, and fringe benefits. The University of British Columbia is an equal opportunity employer. Send curriculum vitae, references, publications, and letter describing current scholarly interests to: R. H. Rodgers, Ph.D.,

Director, School of Home Economics, 6221 University Boulevard, University of British Columbia, Vancouver, BC V6T 1W5.

FLORIDA:

FLORIDA STATE UNIVERSITY. Associate Professor tenure-track position with specialization in family sociology. Require substantial record of research and scholarly publication, and post-Ph.D. experience commensurate with appointment at Associate Professor rank. Salary dependent upon qualifications. Begin Fall, 1981. We encourage minorities and women to apply. Send vita and four letters of reference to: J. Michael Armer, Chair, Department of Sociology, Florida State University, Tallahassee, FL 32306. Closing date for consideration of applicants: November 15, 1980. Affirmative Action/Equal Opportunity Employer.

ILLINOIS:

FIRST PRESBYTERIAN CHURCH, BELLEVILLE: Human Services Psychologist. Must have Ph.D. in clinical psychology from APA-approved program. Skills needed in testing alcoholics and their families. Must be able to develop EAP Program. Send resume to Selection Committee, First Presbyterian Church, 1303 Royal Heights Road, Belleville, IL 62221.

MINNESOTA:

UNIVERSITY OF MINNESOTA. Assistant or Associate Professor, Family Social Science, Nine-month tenure track appointment, effective September 16, 1981. Responsibilities include teaching in and coordination of marriage and family counseling sequence, and the conduct of independent research. Doctorate and clinical membership AAMFT required; supervisory status preferred. Salary and range commensurate with qualifications and experience. Deadline for application December 15, 1980. Write to Dr. Gerhard Neubeck, Chair, Search Committee, Family Social Science Department, 290 McNeal Hall, University of Minnesota, St. Paul, MN 55108. Phone 612-373-1685.

ASSORTED ITEMS

***CHEMICAL DEPENDENCY AND FAMILY AFTERCARE WORKSHOP** at the Johnson Institute, November 9-14. The workshop will focus on the family and the issues that arise during the process of recovery from alcoholism and drug dependency. Participants will identify skills for counseling recovering families and have opportunities to practice these skills. Specific counseling methods such as family sculpturing and multiple family therapy will be demonstrated. Victimization, sexual behavior, and several other common client problems will

also be discussed. For registration information contact: Roseshel Howe, Aftercare Workshop Coordinator, Johnson Institute, 10700 Olson Memorial Highway, Minneapolis, MN 55441. Phone 612-544-4165.

***MENNINGER FOUNDATION FAMILY THERAPY WORKSHOP IN FLORIDA:** Didactic and experiential training emphasizing structural and strategic approaches - January 12-14, 1981 - Colonnades Beach Hotel (Ocean Front) Singer Island, Florida. Hotel costs - \$21.00 per person, per day, based upon double occupancy. Fee - \$235.00. Limit 60 persons. Contact: Family Therapy Workshop, Parent-Child Study Center of the Palm Beaches, Inc., 4802-4 East Avenue, West Palm Beach, FL 33407.

AMA Accreditation Approved - AAMFT CEC Applied For.

***FELLOWSHIP ANNOUNCEMENT: SOCIOLOGISTS.** Interdisciplinary Training Program on Family Violence for a one year postdoctoral fellow beginning July 1, 1981. We seek a sociologist with strong background in two or more of the following areas: family, deviant behavior, research methods, child and family development. Please direct inquiries in confidence to: Eli H. Newberger, M.D., Director, Family Development Study, 300 Longwood Avenue, Boston, MA 02115.

***ACTION IN HOME ECONOMICS, MARRIAGE AND FAMILY ENRICHMENT** (19 pp.) is a booklet designed to provide awareness of the marriage and family enrichment movement. It includes a synthesized presentation of literature, history and status of the movement; definitions, goals, and assumptions; and a summary of agencies and resources through which enrichment opportunities and skill attainment may be sought. Write: Home Economics Center for Research, School of Home Economics, University of North Carolina at Greensboro (UNC-G), Greensboro, NC 27412. Price: 1-9 copies, \$.60; 10 or more, \$.50.

GUIDE FOR RESEARCHING HETEROSEXUAL RELATIONSHIPS: The University of Minnesota Family Study Center has just published a new Technical report (No. 4) entitled: "A Guide for Researching Heterosexual Relationships," and authored by: Ira L. Reiss, Robert H. Walsh, Mary Zey-Ferrell, William M. Tolone, and Ollie Pocs. It is 98 pages long and discusses the major aspects of sexual research by reference primarily to twelve of the recent research studies which have been carried out in the areas of premarital, marital and extramarital sexuality. The aim is to assist those who wish to carry out research of their own on sexuality by showing them how various research problems in sexual research (such

as research design, conceptualization, hypotheses, measurement and sampling) have been handled by others. This report is available from the Minnesota Family Study Center, 1014 Social Science Building, 267 19th Avenue South, University of Minnesota, Minneapolis, MN 55455. The price for the report is \$2.95. Please make check payable to the Minnesota Family Study Center.

FAMILIES TODAY—A Research Sampler on Families and Children, Eunice Corfam, Editor. This publication, NIMH Science Monograph I, provides a sampler of the hundreds of family studies ongoing in universities and research institutions across the United States. Volume I (Stock No. 017-024-00955-5) is \$6.50; Volume II (017-024-00956-3) is \$8.00. Write Superintendent of Documents, U.S. Government Printing Office, Washington, D.C. 20402.

COLLEAGUES AND FRIENDS OF FLO KERCKHOFF: Several of you expressed a desire to be notified if and when a Memorial was established in Flo's name. The Governing Board of the Indiana Association for the Education of Young Children has approved a proposal to administer a graduate level scholarship in early childhood/parent education. In the meantime the idea emerged for a book of readings to be written by friends of Flo. The sale of such a book would permit the scholarship fund to be ongoing. The IAEYC has now opened a savings account in the name of "The Florence G. Kerckhoff Memorial Fund." An initial amount contributed by Dick Kerckhoff will be used to print the book. The book's subsequent earnings plus contributions will be for the annual scholarship and any additional printings. If you or someone you know would be interested in making a contribution to this memorial to Flo, please make your check payable to: IAEYC Florence G. Kerckhoff Memorial Fund and send it to: Genie Mobley, Director Housing Authority, Child Development Services, 2949 Ijams Drive, Terre Haute, IN 47802. For additional information contact Loretta M. Hatfield, Child Development and Family Studies Building, Purdue University, West Lafayette, IN 47907.

CONSULTATION AND TECHNICAL ASSISTANCE AVAILABLE: The Center for Early Adolescence provides training, technical assistance and information to professionals of diverse disciplines who work with young people 10-15 years of age. Through a grant from the Lyndhurst Foundation, specialized consultants (Center Fellows) are available to a small number of sites for short term (3-5) days assistance. For additional information, please contact: Dick J. Geldof Center for Early Adolescence, UNC-Chapel Hill, Suite 223, Carr Mill Mall, Carrboro, NC 27510. Phone 919-966-1148.

*Paid for by sponsoring organization

AGING RESOURCE CENTER REQUESTS DOCUMENTS TO EXPAND DATA BASE: The Service Center for Aging Information (SCAN) requests gerontology researchers, educators, analysts, and practitioners to submit reports and studies which describe research or program experience. Reports should emphasize the social practice and social-behavioral science areas. SCAN is especially interested in studies, reports, and conference presentations that are not usually published or widely circulated. SCAN routinely acquires documents to expand and update its bibliographic data base. Documents and inquiries can be submitted to: SCAN Resource Centers, Acquisitions/Department N.R., P.O. Box 168, Silver Spring, MD 20907 or by calling 301-565-4269 or 800-638-2051.

REFERENCE LIBRARY OF SOCIOLOGY is a new series of reference (bibliographies, etc.) volumes to be published by Garland Publishing, Inc., New York. Proposals for specific titles are solicited. Areas include: Marriage and the Family, Inequality and Social Mobility, Crime and Deviance, Race and Ethnic Relations, Medical Sociology, Sociology of Education, Sociology of Art, Sex Roles, Sociology of Population. Other areas open. Contact series editor: Dr. Dan A. Chekki, Professor of Sociology, University of Winnipeg, Winnipeg, Manitoba R3B 2E9.

MARITAL RAPE: David Finkelhor, of the Family Violence Research Program at the University of New Hampshire, is interested in building a network of people who have a research interest in marital rape. Send your name and a brief description about your research to David Finkelhor, Family Violence Research Program, University of New Hampshire, Durham, NH 03824. When the list is completed, he will send a copy back to you.

ADOPTION BUILDS FAMILIES, a project of Social Science Education Consortium, Inc. and Children's Home Society of Minnesota, has published "Understanding Adoption: Resources and Activities for Teaching Adults About Adoption." This sourcebook contains more than 25 activities for use in teaching adults about adoption. Also available are two units for teaching about self, families, parenting, and related decisions: "Family Development" (elementary) and "Decisions About Self and Family" (secondary). For cost and ordering information, please contact Social Science Education Consortium, Inc., 855 Broadway, Boulder, CO 80302.

SEX/FAMILY LIFE EDUCATION IN THE SCHOOLS: AN ANALYSIS OF STATE POLICIES. The June 1980 edition of *Family Planning/Population Reporter*, published by the Alan Guttmacher Institute, 1220 19th Street NW, Washington, D.C. 20036 features an analysis of state family life/sex education policies and a table sum-

marizing each state's policy on the topic. This comprehensive article was written by Asta M. Kenney and Sharon J. Alexander.

PLEASE NOTE

The inclusion of an item in this newsletter does not necessarily imply that it has the endorsement of NCFR.

CALENDAR

CALIFORNIA:

Los Angeles County Superior Court/Los Angeles County Bar Association—Family Law Section/California Chapter Association of Family Conciliation Courts: Annual Family Law Colloquium, Los Angeles, November 6-8. Title: "The Changing Family—Implications for the Law." Write: Hugh McIsaac, Colloquium Program Co-Chair, Los Angeles County Conciliation Court, 111 North Hill Street, Room 241, Los Angeles, CA 90012.

COLORADO:

Menninger Foundation: Beginning Workshops, Aspen, September 22-25, and November 10-13. Subject: "Marriage and Family Therapy." Write: Division of Continuing Education, The Menninger Foundation, P.O. Box 829, Topeka, KS 66601.

DISTRICT OF COLUMBIA:

National Committee on Women's Issues, National Association of Social Workers: National Conference on Social Work Practice with Women, Washington, September 14-16. Theme: "Social Work Practice in Sexist Society." Write: National Association of Social Workers, 1425 H Street NW, Suite 600, Washington, DC 20005.

ILLINOIS:

City of Chicago, Office for Senior Citizens and Handicapped: National Conference, Chicago, September 8-10. Theme: "Senior Self Help: Chicago Style." Write: Idelle Goode, Director, Office for Senior Citizens and Handicapped, 180 LaSalle Street, Chicago, IL 60601.

Family Service Association of America: Symposium on Family Practice, Chicago, October 8-11. Theme: "Building Theory for Family Practice." Write: Jacqueline M. Atkins, Family Service Association of America, 44 East 23rd Street, New York, NY 10010.

IOWA:

Older Women's League Educational Fund: White House Mini-Conference on Older Women, Des Moines, October 9-10. Theme: "Growing Numbers: Growing Force." Write: Older Women's League Educational Fund, 3800 Harrison Street, Oak-

land, CA 94611.

KENTUCKY:

Rational Behavior Therapy Center: Intensive Training Course in S.A.F.E. Sex Therapy for the Office Practice, Lexington, October 13-17, 1980 and March 9-13, 1981. Write: Rational Behavior Therapy Center, University of Kentucky, College of Medicine, Lexington, KY 40503.

MASSACHUSETTS:

Annual Roundtable Conference for Professional Women: Wentworth-by-the-Sea (Near Boston), October 16-18. Theme: "White-Water Living: Career and Life Planning in the 1980's." Write: Elizabeth Dodson Gray, Dodson Gray Roundtable Conference for Women, 4 Linden Square, Wellesley, MA 02181.

Orton Society: Annual Conference, Boston, November 13-15. Theme: "Dyslexia and Language Communication." Write: 31st International Orton Society Headquarters, c/o E. Dailey, New England Host Branch, 11 Temple Street, Wellesley, MA 02181.

MINNESOTA:

Department of Continuing Education in Social Work: Workshop, Minneapolis, October 2-3. Theme: "Applying Andrological Concepts to Continuing Social Work Education and Staff Development Programs in the Human Services." Write: Shirley Zimmerman, Assistant Director, Continuing Education in Social Work, University of Minnesota, 338 Nolte Center, 315 Pillsbury Drive SE, Minneapolis, MN 55455.

Johnson Institute: Chemical Dependency Workshops, Minneapolis, various dates. Write: Johnson Institute, 10700 Olson Memorial Highway, Minneapolis, MN 55441.

Whole Person Associates: Workshop, St. Paul, September 16-17. Theme: "Stress Skills." Write: Whole Person Associates, Inc., P.O. Box 1334, Oakbrook, IL 60521.

MISSOURI:

Forum for Death Education and Counseling: National Conference, Kansas City, October 31-November 2. Theme: "Enhancing Quality of Life: Death Education and Counseling in the Nuclear Age." Write: Joan McNeil, Program Chair, 2020 Huntington, Manhattan, KS 66502.

MISSISSIPPI:

Center for Early Adolescence/Mississippi School Study Council: Workshop, Biloxi, November 3-5. Title: "Learning and Teaching Styles: The Teacher and the Young Adolescent." Write: Center for Early Adolescence, University of North Carolina at Chapel Hill, Suite 223, Carr Mill Mall, Carrboro, NC 27410.

NATION-WIDE:

Institute for Family Research and Education: National Family Sex Education

Week, October 5-11. Theme: "Preparing Today's Youth for Tomorrow's Family." Write: Institute for Family Research and Education, 760 Ostrom Avenue, Syracuse, NY 13210.

NEW YORK:

Ackerman Institute for Family Therapy: International Conference, New York, June 11-12, 1981. Theme: "The Flowering of Family Therapy." Write: Carol C. Tofel, Director of Administration, Ackerman Institute for Family Therapy, 149 East 78th Street, New York, NY 10021.

Social Science History Association: Annual Meeting, Brockport, November 7-9. Write: Owen S. Ireland, History Department, State University of New York, College at Brockport, Brockport, NY 14420.

PENNSYLVANIA:

Family Therapy Institute of Western Psychiatric Institute and Clinic/School of Social Work, University of Pittsburgh: Conference in honor of International Year of the Family, Pittsburgh, October 26-27. Theme: "The Family: Rooted or Uprooted." Write: University of Pittsburgh, Western Psychiatric Institute and Clinic, 3811 O'Hara Street, Pittsburgh, PA 15261.

Society for the Scientific Study of Sex, Inc.: Eastern Region Conference, Philadelphia, April 10-12, 1981. Write: Daniel Herzog, Executive Director, 16 Evergreen Court, Glen Ridge, NJ 07028.

TENNESSEE:

National Council on the Aging: Annual Conference, Nashville, March 29-April 1. Write: National Council on the Aging, 1828 L Street NW, Washington, DC 20036.

TEXAS:

National Association of State Units on Aging/National Association of Area Agencies on Aging: Joint Annual Training Conference, Houston, August 25-28. Write: Kay Samec, National Association of Area Agencies on Aging, 1828 L Street NW, Washington, DC 20036.

North American Council on Adoptable Children: North American Conference on Adoptable Children, Houston, October 9-11. Theme: "Permanence Through Teamwork." Write: Council on Adoptable Children of Texas, Inc., P.O. Box 842, Houston, TX 77001.

UTAH:

Weber State College: Family Education Conference, Ogden, September 17-19. Theme: "Families Alive! Roots and Wings of Relationships." Write: Department of Child and Family Studies, Weber State College, Ogden, UT 84408.

VIRGINIA:

National Public Law Training Center: Classes, Alexandria, October 6-10. Subject:

"Law and the Elderly." Write: Rosalyn Voige, National Public Law Training Center, 2000 P Street NW, Suite 600, Washington, DC 20036.

WISCONSIN:

Family Service of Milwaukee/Lutheran Social Services: Conference, Milwaukee, October 16-18. Theme: "Understanding Families." Write: Autumn Institute Registrar, Family Service of Milwaukee, P.O. Box 08434, Milwaukee, WI 53208.

Region V Child Abuse and Neglect Resource Center/National Center on Child Abuse and Neglect: National Conference on Child Abuse and Neglect, Milwaukee, April 5-8, 1981. Write: Region V Child Abuse and Neglect Resource Center, School of Social Welfare, University of Wisconsin-Milwaukee, P.O. Box 786, Milwaukee, WI 53201.

ABROAD:

THE NETHERLANDS:

International Society for Prevention of Child Abuse and Neglect/The Dutch Society for Prevention of Cruelty to Children: International Congress on Child Abuse and Neglect, Amsterdam, April 21-25, 1981. Theme: "Violence to Children in the Family." Write: Third International Congress on Child Abuse and Neglect, Congress Office, Free University, P.O. Box 7161, 1007 MC Amsterdam, The Netherlands.

NETHERLANDS ANTILLES:

Americas Institute of Adlerian Studies: Annual Winter Institute, Curacao, December 26-January 2. Write: Americas Institute of Adlerian Studies, 600 North McClurg Court, Suite 2502-A, Chicago, IL 60611.

NCFR FAMILY RESOURCE/ REFERRAL CENTER

The primary objective of the Family Resource/Referral Center (hereafter referred to as FR/RC) is to provide ready access to materials and information for professionals in the family field, the media and interested others throughout the country.

The latest development within NCFR's Family Resource/Referral Center is the creation of a computerized online (public access) bibliographic database hopefully operational by early 1981.

In cooperation with David Olson, Editor of the *Inventory of Marriage and Family Literature*, the FR/RC plans to merge the IMFL with the FR/RC. The major responsibility of the IMFL project is to contribute relevant journal articles to the FR/RC file. FR/RC will be responsible for bibliographic data in the following formats: books/monographs; government documents; instructional materials; organizations; programs; reports; periodicals; audio-

visuals; study centers; community resource centers; selective databases and information regarding upcoming annual meetings and conferences.

FR/RC will also be responsible for the publication of a guide to information sources in marriage and family literature, excluding journal articles which the IMFL will continue to publish.

Throughout the educational community, today's predominant themes are the acceleration of educational improvement and increased learning opportunities. Improved curricula, programs, literature, new media and more effective teaching methods and services are being designed and developed in laboratories, research programs, community organizations and classrooms throughout the country. These activities are going on at a rate unprecedented in the history of education. All this recent and expanding activity has produced much valuable information in the family field. This information is contained in documents that have not always reached the people who need them.

Concurrent with the quantity of available information and the increased number of requests for family materials and services has been the development of faster and more efficient retrieval methods through machine searching. Computer searching is especially valuable when the topic to be searched is complex and contains combinations of several concepts or is interdisciplinary in nature. Because of the great demand for materials and information (thousands of such requests and inquiries have come to NCFR in the last few years) and the interdisciplinary nature of the field and its consequent complexities, it is imperative that such a service be developed to help identify, organize and disseminate family-related materials.

After careful research the services offered by BRS (Bibliographic Retrieval Services, Inc.) became the first choice of available services. Since its entry into the online information industry in 1977, BRS has become known as one of the most innovative and cost-effective online service vendors.

Compared to the cost of manual processing, it becomes clear that computerized databases offer many advantages. Some primary advantages are: (1) Because of the large number of citations the machine can hold, in relation to restrictions of manual files, the Center can become more all-inclusive. (2) The Center can be kept current by continuous online updating. (3) A computerized file allows for faster retrieval of information and more comprehensive retrieval, and information can be accessed in many different ways. (4) The Center will have the ability to handle unlimited numbers of requests through our own terminal (specific and/or custom searches). (5) By becoming public, users across the country will have ready access to our database through their

local libraries, universities and colleges which brings the Center's resources into many communities, large and small, across the nation. (6) Database programs are available for print-ready copy, which will make the publishing of our manual less costly to produce and allow us to publish cost-effective future editions.

Since September, the Center identified some 20,000 journal articles (including the IMFL), 1,000 family-related organizations, approximately 8,000 books (c1970-on), 150 databases with bits and pieces of family information, and substantial bibliographic data representing the remaining formats in fulfilling our objective in Phase I (first year) of the project. To date we have over 200 NCFR members willing to act as consultants to the FR/RC in their various specialties. Since the survey is not complete it is expected that the number will grow substantially. The development and operation of a computerized online bibliographic file is the primary objective of Phase II (second year) of the project and the primary objective of Phase III, the final development year, is to edit, publish and disseminate an information guide to family literature and programs. At the end of the development years, FR/RC staff will be responsible for the maintenance and updating of the bibliographic file and respond to requests for literature searches and to make referrals when necessary. The staff will also be responsible for all future guide editions. A fee will be charged to access the database.

Comprehensive answers to inquiries are not possible at this time since we are still in the development stage of our project. However, it is FR/RC's responsibility to respond with whatever information is presently available throughout the development years.

FR/RC would like to develop strong communication links with target audiences regarding such things as services needed, information available and satisfaction with services. A special thank you to all of you who have contributed bibliographies and other information to the Center file. Cooperation among the producers and users of family resources is vital to the building and updating of a database that is truly representative of the family field.

If you have questions, suggestions or information, please contact: *Margaret Bodley, Project Director, Family Resource/Referral Center, 1219 University Avenue SE, Minneapolis, MN 55414.*

NATIONAL COUNCIL ON FAMILY RELATIONS
1219 University Avenue Southeast
Minneapolis, Minnesota 55414

Return Postage Guaranteed
Address Correction Requested

Nonprofit Organization
U.S. Postage
PAID
Minneapolis, Minnesota
Permit No. 1806

1980 ANNUAL MEETING BOOK EXHIBIT

Please let *Harve Horowitz*, NCFR Book Exhibits representative, know about books you have written which will be of interest to your colleagues, and which should be displayed at the 1980 NCFR Annual Meeting. Write your publisher a note, and keep Harve informed about your recommendations. His address is *10369 Currycomb Court, Columbia, MD 21044*. (Telephone: 301-997-0763) We sincerely hope that delegates will have the opportunity to review YOUR books in Portland. Use the form below.

Dear Publisher:

Please contact *Harve C. Horowitz, NCFR Advertising/Exhibits Representative, 10369 Currycomb Court, Columbia Maryland 21044 (301-997-0763)* concerning promotion of my title(s) published with your press at the Annual Meeting of the **National Council on Family Relations**, October 22-25, 1980, Portland:

Title	Publisher
_____	_____
Title	Author/Member NCFR
_____	_____

To: *Harve C. Horowitz, NCFR Advertising/Exhibits Representative, 10369 Currycomb Court, Columbia, Maryland 21044.*

From:

Please contact the following publisher(s) concerning title(s) I have authored which would be of interest to my colleagues and appropriate for display or advertising at the National Council on Family Relations Annual Meeting, October 22-25, 1980, Portland:

Title	Publisher
_____	_____
Title	Publisher
_____	_____

NATIONAL COUNCIL ON FAMILY RELATIONS
1219 University Avenue Southeast
Minneapolis, Minnesota 55414

Return Postage Guaranteed
Address Correction Requested

Nonprofit Organization
U.S. Postage
PAID
Minneapolis, Minnesota
Permit No. 1806

NEW MEXICO:

Association for Experiential Education: Annual Conference, Santa Fe, October 24-27. Theme: "Experiential Education in the 1980's." Write: AEE, Box 4625, Denver, CO 80204.

NEW YORK:

Ackerman Institute for Family Therapy: Two Year Clinical Externship Program in Family Therapy, New York City, beginning July 8. Write: AIFT, 149 East 78th Street, New York, NY 10021.

International Psychohistorical Association: Annual Convention, New York City, June 12-14. Write: Jacques Szaluta, IPA Convention Chair, Department of Humanities, U.S. Merchant Marine Academy, Kings Point, NY 11024.

PENNSYLVANIA:

Gerontology Center, Pennsylvania State University: Summer Series, University Park, July 7-18. Write: Dennis Kameister, Summer Series in Gerontology, Amy Gardner House, Pennsylvania State University, University Park, PA 16802.

TEXAS:

Southwest Region Family Service Association of America: Practice Institute, San Antonio, June 1-4. Write: J. B. Brannon, Child and Family Service, 419 West Sixth

Street, Austin, TX 78701.

WISCONSIN:

Family Cluster Lab: Family Life Conference, Green Lake, August 9-16. Write: Lawrence Janssen, American Baptist Assembly, Green Lake, WI 54941.

ASSORTED LOCATIONS:

Cancer Counseling and Research Center: Educational Program for Professionals, Boston, July 25-27; Seattle, July 25-27; New York City, September 26-28. Theme: "Phase I: Stress, Psychological Factors, and Cancer." Write: CCFR, 1300 Summit Avenue, Suite 710, Ft. Worth, TX 76102.

Interpersonal Communication Programs, Inc.: Instructor Workshops, various locations and dates throughout 1980. Write: ICP, 300 Clifton Avenue, Minneapolis, MN 55403.

The Women's Project in Family Therapy: Conferences, Richmond, May 30-31; Chicago, June 20-21. Theme: "The Dilemma of Women in Families: Implications for Family Therapy." Write: The Women's Project in Family Therapy, 6812 Chester Avenue, Philadelphia, PA 19142.

ABROAD:

DENMARK:

United Nations: World Conference for

the U.N. Decade for Women, Copenhagen, July 14-30. Write: Vivian L. Derryck, Director, U.S. Secretariat for the World Conference of the U.N. Decade for Women, 1980, M/WCW, Room 1004, Department of State, Washington, DC 20520.

ENGLAND:

Texas Woman's University/American Institute for Foreign Study: Study Course on British Families and Mental Health, London, July 11-August 14. Write: Paula House, International Program Office, Sawyer and Oakland Streets, Room 119, Fine Arts Building, TWU, Denton, TX 76204.

IOWA:

As president of the ICFR, I warmly greet each state member and invite you to help in our efforts to revitalize our state Council. The officers have held Board meetings on February 1, 8; March 29; and April 26. Bi-monthly meetings are scheduled for the rest of the year. At the Iowa WHCF, group leaders were Eloise Rippie, law, Dorothy Pinsky, Charles L. Cole, and Rosalie J. Ackerman, work place; group recorders were John Strong, energy, Sharon Bieschke, work place, and Dianne Flynn and Ronald Jones, health. Ron Jones has plans for a September statewide meeting which is yet to be announced. Rosalie J. Ackerman, Department of Psychology, Iowa State University, Ames, IA 50011, president.