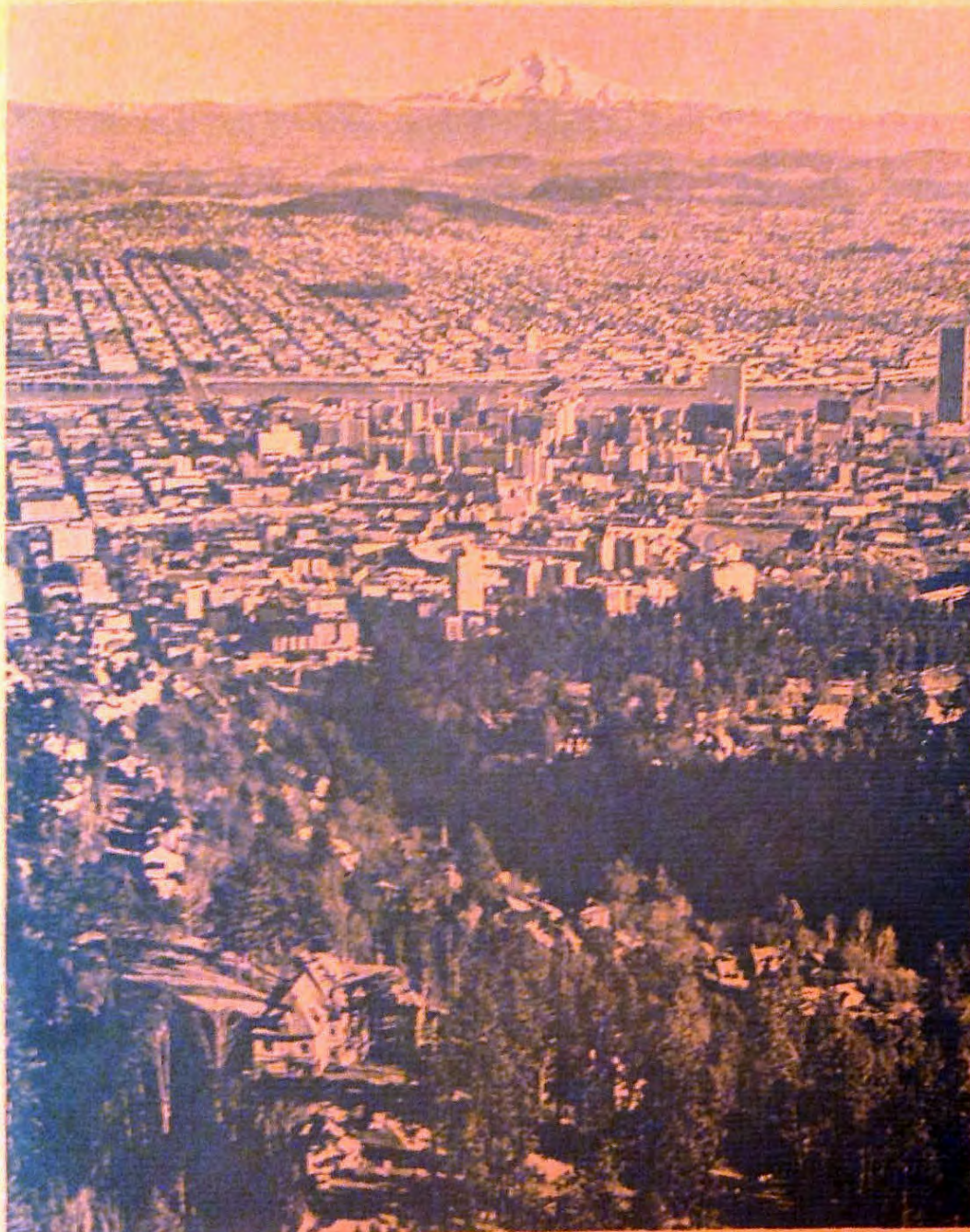


# NATIONAL COUNCIL ON FAMILY RELATIONS

Annual Meeting  
October 22-25, 1980

The Quality of Family Life:  
Integrating Theory,  
Research and Application

PORTLAND HILTON HOTEL  
PORTLAND, OREGON





## 1980 NCFR ANNUAL MEETING PROGRAM COMMITTEE

General Program Chair . . . . .	Wesley R. Burr, Brigham Young University
Education Section Meetings . . . . .	George Rowe, University of Nebraska-Lincoln
Family Action Section Meetings . . . . .	Charles Lee Cole, Iowa State University
Family Therapy Section Meetings . . . . .	Marcia W. Lasswell, University of Southern California
International Section Meetings . . . . .	Jan E. Trost, Uppsala University, Sweden
Research and Theory Section Meetings . . . . .	Pauline G. Boss, University of Wisconsin-Madison
Combined Book Exhibit . . . . .	Harve Horowitz, Columbia, Maryland
Film, Filmstrip, and Video-tape Exhibit . . . . .	
. . . . . Martha Calderwood, C.M.D.N.J.—New Jersey Medical School, Newark, and Deryck Calderwood, New York University	
Affiliated Councils Seminars . . . . .	
. . . . . E. M. Rallings, University of North Carolina-Greensboro, and Leo Hawkins, North Carolina State University-Raleigh	
Round Tables . . . . .	Sharon Price-Bonham, University of Georgia
Theory Construction and Research Methodology Workshop . . . . .	David Klein, University of Notre Dame
Student Functions . . . . .	Carolyn Love, J. C. Penney Company, New York City, Stephen Elliott, Bowman-Gray School of Medicine
. . . . . Nancy Bueche, University of North Carolina-Greensboro, Jeri Hepworth, University of Connecticut	
. . . . . Candyce Fake, Burlington County College, New Jersey, Scott Lane, University of Georgia	
Recording Services . . . . .	Jerry Sienknecht, Salt Productions, Meridian, Idaho

## 1980 LOCAL ARRANGEMENTS CHAIRS

Local Information . . . . .	John Bruce
Registration . . . . .	Marsha Roberts and Rodney Cate
Hosts and Hostesses . . . . .	Marsha Roberts
Opening Reception . . . . .	Mary Cramer, Shari Davis, and June Henton
Scenic Autumn Tour, and A Night at the Cabaret . . . . .	Helen Thun Hartness
Housing for International Visitors, and Liaison for Emergencies . . . . .	Sherry Boyd
Publicity and Press . . . . .	Mary Cramer, June Henton, and Peter Vennewitz
Audio-Visuals . . . . .	Commercy Warrell
General Assistance . . . . .	Martha Lambert

## NCFR PRESIDENTS

President, 1979-80 . . . . .	Ira L. Reiss, University of Minnesota
President-Elect, 1979-80 . . . . .	Kate B. Garner, Greensboro, North Carolina
Past Presidents:	
Paul C. Glick, Gerhard Neubeck, William C. Nichols, Carlfred B. Broderick, Richard K. Kerckhoff, Leland J. Axelson, Murray A. Straus, Eleanore B. Luckey, Gerald R. Leslie, Richard N. Hey, Elizabeth S. Force, William F. Kenkel, William M. Smith, Jr., F. Ivan Nye, Clark E. Vincent, Blaine R. Porter, Wallace C. Fulton, David R. Mace, Harold T. Christensen, Henry A. Bowman, Aaron L. Rutledge, Mildred I. Morgan, David B. Treat, Judson T. Landis, Gladys H. Groves, Dorothy Dyer, Robert G. Foster, John O'Grady, Nadina Kavinoky, Ernest G. Osborne, Lawrence K. Frank, Sidney E. Goldstein, Ernest W. Burgess, Ernest R. Groves, Adolph Meyer, Paul Sayre	

We wish to thank the Portland, Oregon Chamber of Commerce for the cover photo.

ANNUAL MEETING  
October 22-25, 1980  
Portland, Oregon

NATIONAL COUNCIL ON FAMILY RELATIONS  
1219 University Avenue Southeast  
Minneapolis, Minnesota

## THE QUALITY OF FAMILY LIFE: INTEGRATING THEORY, RESEARCH AND APPLICATION

### CONTENTS

#### ANNUAL MEETING PROGRAM

A Night at the Cabaret . . . . .	16
Alumni Celebration . . . . .	8
Burgess Award Lecture and Presentation . . . . .	13
Burgess Award Reception and Discussion . . . . .	13
Didactic Session . . . . .	1
Education Section Sessions . . . . .	3,9,11,13,14,16,17
Family Action Section Sessions . . . . .	4,9,10,11,12,14,17
Family Therapy Section Sessions . . . . .	4,10,12,13,14,18
Focus Groups . . . . .	26
International Section Sessions . . . . .	5,10,13,14,18
Minorities Sessions . . . . .	6,16
NCFR Affiliated Councils Sessions . . . . .	28
NCFR Annual Business Meeting . . . . .	16
Opening Evening Reception . . . . .	3
Plenary Sessions . . . . .	3,6,11,16
Presidential Address . . . . .	16
Post-Conference Workshop—Family Therapy Section . . . . .	25
Pre-Conference Workshop—Education Section . . . . .	24
Pre-Conference Workshop—Family Action and Family Therapy Sections . . . . .	24
Pre-Conference Workshop—Family Therapy Section . . . . .	24
Pre-Conference Workshop—Military Families . . . . .	19,20
Pre-Conference Workshop—Theory Construction and Research Methodology . . . . .	20,21,22,23,24
Research and Theory Section Sessions . . . . .	5,6,11,13,15,16,18,19
Round Table Coffees . . . . .	1,2,3
Round Table Luncheons . . . . .	6,7,8
Scenic Autumn Tour . . . . .	8
State Council Meetings (Oregon and Texas) . . . . .	8,9
Students and Young Professionals Business Meeting . . . . .	11

#### FINDING PEOPLE AND PLACES

Annual Meeting Registration . . . . .	25
Annual Meeting Tapes . . . . .	25
Combined Book Exhibit . . . . .	26
Employment Service . . . . .	25
Film, Filmstrip, and Video-tape Exhibit . . . . .	26
Focus Group Headquarters . . . . .	26
Message Center . . . . .	25
Press Room . . . . .	25
Snack Bar and Lounge . . . . .	25
Student Headquarters . . . . .	26

#### NCFR AFFAIRS AT THE ANNUAL MEETING

1981 Annual Meeting Program Committee Meeting . . . . .	27
Family Relations Editors' Meeting . . . . .	27
Journal of Family Issues Editors' Meeting . . . . .	27
Journal of Marriage and the Family Editors' Meeting . . . . .	27
Monograph Series Editors' Meeting . . . . .	27
NCFR Board of Directors Meetings . . . . .	27,28
NCFR Constitution Revision Committee Meeting . . . . .	28
NCFR Finance Committee Meeting . . . . .	26
NCFR Membership Committee Meeting . . . . .	27
NCFR 1981 Nominating Committee Meeting . . . . .	27
NCFR Public Policy Committee Meeting . . . . .	27
NCFR Publications Committee Meeting . . . . .	26
NCFR White House Conference on Families Committee Meeting . . . . .	27
Orientation for Round Table Leaders . . . . .	27
Students and Young Professionals Representatives Meeting . . . . .	27

#### BEHIND THE SCENES

Annual Meeting Program Committee . . . . .	a
Local Arrangements Chairs . . . . .	a
NCFR Board of Directors, 1979-80 . . . . .	29
NCFR Board of Directors, 1980-81 . . . . .	30
NCFR Presidents . . . . .	a
NCFR Regional Representatives . . . . .	31
NCFR Staff . . . . .	31
Regional, State, and Local Chairs . . . . .	31

#### NOTE NAME TAG COLORS

Yellow—First-time delegates  
Green—Part-time delegates  
White—All others

Dots on the name tags indicate Section membership—Orange, Education; Yellow, Family Action; Blue, Family Therapy; Green, Research and Theory

NOTE: Subdivision I AAMFT Credit applies for portions of the program. Check at the NCFR Registration Desk.

# ANNUAL MEETING PROGRAM IN BRIEF

## TUESDAY, OCTOBER 21, 1980

- 8:30 a.m. to 12:00 noon  
Theory Construction & Research Methodology Workshop
- 9:00 a.m. to 12:00 noon  
Pre-Conference Workshop on Military Families
- 1:00 p.m. to 2:00 p.m.  
NCFR Finance Committee Meeting
- 1:30 p.m. to 5:00 p.m.  
Theory Construction & Research Methodology Workshop Continued
- Pre-Conference Workshop on Military Families Continued
- 2:00 p.m. to 6:00 p.m.  
NCFR Publications Committee Meeting
- 4:00 p.m. to 6:00 p.m.  
NCFR Membership Committee Meeting
- 6:30 p.m. to 9:30 p.m.  
NCFR Affiliated Councils Dinner & Seminar
- 7:30 p.m. to 9:00 p.m.  
Annual Meeting Registration
- 7:30 p.m.  
Pre-Conference Workshop on Military Families Meeting and Reception
- 8:00 p.m. to 9:30 p.m.  
Theory Construction & Research Methodology Business Meeting

## WEDNESDAY, OCTOBER 22, 1980

- 8:00 a.m. to 7:30 p.m.  
Annual Meeting Registration
- 8:00 a.m. to 6:00 p.m.  
Film, Filmstrip & Video-Tape Exhibit
- 8:00 a.m. to 9:00 a.m.  
1981 NCFR Nominating Committee Meeting
- 8:00 a.m. to 10:00 a.m.  
Membership Workshop for NCFR Affiliated Councils Chairs
- 8:30 a.m. to 12:00 noon  
Theory Construction & Research Methodology Workshop Continued
- 9:00 a.m. to 12:00 noon  
Pre-Conference Workshop on Regulation of Marital and Family Therapy: Strategies for Certification and Licensure
- 9:30 a.m. to 12:30 p.m.  
Pre-Conference Workshop on Three Learning Domains Into Successful Family Life Education
- 10:00 a.m. to 11:00 a.m.  
Student and Young Professional Representatives Meeting
- 10:00 a.m. to 12:00 noon  
Journal of Marriage and the Family Editors' Meeting
- Family Relations Editors' Meeting
- Monograph Series Editors' Meeting
- 12:00 noon to 1:00 p.m.  
Marriage Studies Consortium

- 12:00 noon to 6:00 p.m.  
Book Exhibit
- 1:00 p.m. to 2:30 p.m.  
Round Table Leaders Orientation
- 1:00 p.m. to 3:00 p.m.  
Pre-Conference Workshop on Family Problems as Seen in Children's Books
- 1:00 p.m. to 5:30 p.m.  
1979-80 NCFR Board of Directors Meeting
- 1:30 p.m. to 2:30 p.m.  
Law and the Family Focus Group Meeting
- 2:30 p.m. to 3:30 p.m.  
Health and the Family Focus Group Meeting
- 3:00 p.m. to 5:00 p.m.  
Didactic Session
- Round Table Coffees
- 3:30 p.m. to 4:30 p.m.  
Middle-Age and Middlescence Focus Group Meeting
- 4:30 p.m. to 5:30 p.m.  
Adoption Focus Group Meeting
- 5:30 p.m. to 6:30 p.m.  
Student and Young Professional Representatives Business Meeting
- 5:30 p.m. to 7:15 p.m.  
Reception for Conference Delegates
- 7:30 p.m. to 9:30 p.m.  
Opening Plenary Session

## THURSDAY, OCTOBER 23, 1980

- 7:00 a.m. to 9:30 a.m.  
NCFR White House Conference on Families Committee Meeting
- 7:30 a.m. to 8:30 a.m.  
Journal of Family Issues Editors' Meeting
- 8:00 a.m. to 2:00 p.m.  
Annual Meeting Registration
- 8:00 a.m. to 6:00 p.m.  
Film, Filmstrip, & Video-Tape Exhibit
- 8:30 a.m. to 5:30 p.m.  
Book Exhibit
- 8:30 a.m. to 10:00 a.m.  
Section Meetings I
- NCFR Minorities Session
- 10:15 a.m. to 11:45 a.m.  
Plenary Session
- 12:00 noon to 1:30 p.m.  
Round Table Luncheons
- 12:00 noon to 1:00 p.m.  
Aging Focus Group Meeting
- 1:00 p.m. to 2:00 p.m.  
Divorce & Divorce Reform Focus Group Meeting
- Directors of Family Centers Meeting
- 2:00 p.m.  
Scenic Autumn Tour
- 2:00 p.m. to 3:00 p.m.  
Oregon Council Meeting
- 8:30 p.m. to Midnight  
Alumni Celebration

## FRIDAY, OCTOBER 24, 1980

- 7:00 a.m.  
Texas Council Meeting
- 7:00 a.m. to 8:30 a.m.  
1981 NCFR Annual Meeting Program Committee Meeting
- 8:00 a.m. to 4:00 p.m.  
Annual Meeting Registration
- 8:00 a.m. to 6:00 p.m.  
Film, Filmstrip, & Video-Tape Exhibit
- 8:00 a.m. to 9:00 a.m.  
Single Parent Families Focus Group Meeting
- 8:30 a.m. to 5:30 p.m.  
Book Exhibit
- 8:30 a.m. to 10:00 a.m.  
Section Meetings II
- 9:00 a.m. to 10:00 a.m.  
Marriage Enrichment Focus Group Meeting
- 10:15 a.m. to 11:45 a.m.  
Plenary Session
- 12:00 noon to 1:00 p.m.  
Student & Young Professionals Business Meeting
- Divorce & Divorce Reform Focus Group Meeting
- 1:00 p.m. to 2:30 p.m.  
Section Meetings III
- 2:45 p.m. to 3:45 p.m.  
Burgess Award Address
- 4:00 p.m. to 5:30 p.m.  
Burgess Address Discussion and Reception
- Section Meetings IV
- 5:30 p.m. to 8:00 p.m.  
NCFR Public Policy Committee Meeting
- 6:00 p.m. to 7:00 p.m.  
Minorities Reception and Business Meeting
- 8:00 p.m. to 9:30 p.m.  
NCFR Presidential Address
- 9:30 p.m. to 11:30 p.m.  
A Night at the Cabaret

## SATURDAY, OCTOBER 25, 1980

- 7:00 a.m. to 8:30 a.m.  
NCFR Constitution Revision Committee
- 7:45 p.m. to 8:30 p.m.  
Education Section Business Meeting
- 8:00 a.m. to 11:00 a.m.  
Annual Meeting Registration
- 8:30 a.m. to 10:00 a.m.  
Plenary Session
- 10:15 a.m. to 10:45 a.m.  
NCFR Annual Business Meeting
- 11:00 a.m. to 12:30 p.m.  
Section Meetings V
- 1:00 p.m. to 3:00 p.m.  
1980-81 NCFR Board of Directors Meeting
- 1:00 p.m. to 5:00 p.m.  
Post-Conference Workshop on Divorce

## PROGRAM

### 1980 ANNUAL MEETING

#### THE NATIONAL COUNCIL ON FAMILY RELATIONS

Portland-Hilton Hotel, Portland, Oregon—October 22-25

CONFERENCE THEME: *THE QUALITY OF FAMILY LIFE: INTEGRATING THEORY, RESEARCH AND APPLICATION*

#### WEDNESDAY, OCTOBER 22, 1980

3:00 p.m. to 5:00 p.m.  
North Galleria

##### DIDACTIC SESSION

"Family Demography," *Graham B. Spanier*, Pennsylvania State University, and *Arthur Norton*, U.S. Bureau of the Census, Washington, D.C.

(This is an in-service training session which will deal with using demographic data such as the 1980 Census and Population Surveys. Issues such as computer applications, problems and pitfalls, where to turn for help, and how to locate data will be covered.)

3:00 p.m. to 5:00 p.m.  
Ballroom A

##### ROUND TABLE COFFEES

##### LEADERSHIP ROUND TABLES

1. "The Responsibility of Children for Their Own Behavior: The Need for Higher Adult Expectations," *John Bruce*, E. C. Brown Foundation, Portland, Oregon
2. "Family and Social Policy: Some Key Issues," *J. Ross Eshleman*, Wayne State University
3. "Family Violence," *Richard Gelles*, University of Rhode Island
4. "Health and Welfare Implications of Changing Familial Statuses of Black Women," *Jacquelyne Johnson Jackson*, Duke University Medical Center and Howard University
5. "Second Coupling (Remarriages)," *Barbara James*, University of North Carolina-Chapel Hill
6. "The Life Plans of Low Income Girls," *William Kenkel*, University of Kentucky
7. "As the Culture Goes—So Goes the Family, or Vice Versa?" *Eleanore B. Luckey*, University of Utah
8. "Family Decision-Making and the Establishment of Internal Family Policies," *Gerald W. McDonald*, Florida State University
9. "Mate Selection the Second Time Around (Remarriage): A Negative Research Area," *Bernard Murstein*, Connecticut College
10. "Open Marriage: A Closed Case," *Gerhard Neubeck*, University of Minnesota
11. "Marital Power and Emotional States: Exploring a Sociology of Emotions," *Marie Withers Osmond*, Florida State University
12. "Family Life Programs: Relating to Related Disciplines," *Mary Lou Purcell*, Auburn University
13. "Pulling Together Theory in Divorce, Adjustment," *Helen Raschke*, Austin College, Texas, and *Randal Day*, South Dakota State University
14. "Family Ritual: Building and Connecting the Links," *Jay D. Schvaneveldt*, Utah State University
15. "Traditions as a Source of Strength in Pacific/Asian Families," *Sylvia Y. Schwitters*, University of Hawaii at Manoa
16. "The Challenge of Stepparenting," *Kenneth D. Sell*, Catawba College

**WEDNESDAY, OCTOBER 22, 1980 CONTINUED**  
**ROUND TABLE COFFEES CONTINUED**  
 3:00 p.m. to 5:00 p.m.  
 Ballroom A

17. "Getting Undergraduate Students Involved in Research," *Barbara H. Settles*, University of Delaware
18. "The State and Regional Data Archives: A National Resource for Family Research," *Murray Straus*, University of New Hampshire
19. "Title IV-D Child Support Enforcement: Can We Separate Those Who Can From Those Who Can't," *Cecelia Sudia*, Administration for Children, Youth and Families, HHS, Washington, D.C. and *Leonard Systma*, Oregon Child Support Enforcement Program, Portland
20. "The Family and Informal Support Systems," *Marvin B. Sussman and Kris Jeter*, University of Delaware
21. "Attitudes Toward the Timing of Parenthood—Extension and Elaboration," *Jacqueline Voss*, North Dakota State University

**EDUCATION SECTION ROUND TABLES**

- South Galleria
22. "Educational Effectiveness in Changing Family Passenger Safety: Interrelationships Among Knowledge, Attitudes, and Behaviors," *Jo Lynn Cunningham and Sandra Miller*, University of Tennessee, *Christy Hughes*, National Safety Council, Chicago, and *Carol Culler*, Iowa State University
  23. "The Marital Inventory: An Assessment Technique to Determine Couple Compatibility and Readiness for Marriage," *Brenton G. Yorgason*, Brigham Young University, and *Thomas B. Holman*, University of Wisconsin-Stout

**FAMILY ACTION SECTION ROUND TABLE**

24. "Family Involvement in Providing Day Care for the Elderly," *Peggye Dilworth-Anderson*, Northeastern Illinois University

**FAMILY THERAPY SECTION ROUND TABLES**

25. "Working with Military Families," *Dannis D. Cooper*, Hardin-Simmons University
26. "Rural Family Therapy Practice," *Robert O. Rich*, Eastern Washington University
27. "The Effects of a Group Counseling Experience on Post-Divorce Adjustment," *Jacqueline Simpson and Lynn Earl*, Texas Woman's University
28. "Evaluating the Skills of the Marriage and Family Counselor or Therapist in Actual Marriage and Family Counseling," *C. Jay Skidmore*, Utah State University
29. "Adoption Builds Families," *Marietta Spencer*, Children's Home Society, St. Paul
30. "Comprehensive Treatment of Runaway Children and their Parents," *John Wodarski and Paul Ammons*, University of Georgia

**INTERNATIONAL SECTION ROUND TABLES**

31. Are the Views of Family Specialists Represented in Family Law?" *Richard K. Kerckhoff*, Purdue University
32. "China Revisited," *Norma L. Newmark*, Private Practice, Middletown, New York

**ROUND TABLES**

33. "Family Researchers in Offender Rehabilitation: Integrating Theory, Research, and Practice," *David Dosser and Raymond Yang*, University of Georgia, and *Bernard Davidson*, Texas Tech University

# WEDNESDAY, OCTOBER 22, 1980 CONTINUED

3:00 p.m. to 5:00 p.m.  
South Galleria

## ROUND TABLE COFFEES CONTINUED

34. "The Impact of Adult Role-Transition on Family Functioning: Who Does the Dishes?" *Judith Hooper*, University of Wisconsin-Madison
35. "Family Lifestyles and Energy: Current Trends and Projections for the Future," *Joan Keith and Mari Wilhelm*, Michigan State University
36. "Spanking: Model or Deterrent of Children's Aggression?" *Robert E. Larzelere*, Western Conservative Baptist Seminary, and *Barbara Carson*, University of New Hampshire

5:30 p.m. to 7:15 p.m.  
Pavilion Room

## RECEPTION FOR CONFERENCE DELEGATES

Sponsors: *E. C. Brown Foundation; Teen-Age Parents-Western Region Education Committee; Sociologists for Women in Society; Washington Alliance Concerned with School Age Parents; Oregon Council on Family Relations; Washington Council on Family Relations; Oregon Association for Marriage and Family Therapy; Oregon Home Economics Association; Pacific Power and Light Company; Meier and Frank; Fred Meyer; Family Life Department Faculty, Oregon State University*  
Co-Chairs: *Mary Cramer, Shari Davis, and June Henton*, Oregon State University

7:30 p.m. to 9:30 p.m.  
Ballroom A

## OPENING PLENARY SESSION

Welcome: *Ira L. Reiss*, University of Minnesota, NCFR President

Address: "Launching a National Family Perspective," *John A. Calhoun*, Chief of the Children's Bureau, Commissioner for Children, Youth, and Families, Department of Health and Human Services, Washington, D.C.

Discussants: *Carlfred B. Broderick*, University of Southern California, and *Ruth H. Jewson*, National Council on Family Relations, Minneapolis

Presiding: *Wesley R. Burr*, Brigham Young University

(This session is co-sponsored by the Affiliated Councils and the Family Action Section. The address will focus on possibilities in the post-White House Conference era, followed by a dialogue.)

# THURSDAY, OCTOBER 23, 1980

8:30 a.m. to 10:00 a.m.

Education  
Session A  
Galleria 2

## SECTION MEETINGS I

Improving the Quality of Sexual Life Among Adolescents and Young Adults

"Sex Education: Will it be Liberalism, Conservatism, or Gradualism?" *Paul Cameron*, University of Nebraska-Lincoln

"Influence of the Family on College Women's Attitudes Toward Sexual Behaviors," *Jill Ginsburg Palmeter*, Oregon State University, and *Sally A. Koblinsky*, San Diego State University

"Parent Messages: Educational Techniques for Enhancing the Quality of Sexual Life for Young Adults," *Carol Darling and Mary Hicks*, Florida State University

Presiding and Discussion Leader: *Mary Hicks*, Florida State University

(This session will include presentations of results from three recent studies, followed by a discussion of sexual attitudes and behaviors of adolescents and young adults.)

Session B  
Council Suite

Ethics in Teaching Marriage and Family Courses

Panel Members: *Elizabeth Socha Davis*, University of Wisconsin-Madison, *John DeFrain*, University of Nebraska-Lincoln, *Jetse Sprey*, Case Western Reserve University, and *Susan Powers-Alexander*, University of Nebraska-Lincoln

Organizer and Moderator: *Judith O. Hooper*, University of Wisconsin-Madison

(Three university professors and a teaching assistant will present divergent viewpoints on ethical issues facing teachers. Audience participation is encouraged.)

THURSDAY, OCTOBER 23, 1980 CONTINUED

8:30 a.m. to 10:00 a.m.

Family Action

Session A

Studio Suite

SECTION MEETINGS I CONTINUED

Jealousy in Variant Life Styles

"Jealousy in Bisexual Marriages," *Lester Kirkendall*, Emeritus, Oregon State University  
 "Jealousy, Toward a Comprehensive Model," *Gary Hansen*, Louisiana State University, Baton Rouge  
 "Jealousy in Gay Father Relationships," *Frederick Bozett*, University of California-San Francisco

Discussant: *Bernard Murstein*, Connecticut College

Organizer and Moderator: *Gary Hansen*, Louisiana State University, Baton Rouge

(A discussion of the theoretical meanings of jealousy, with formal papers being critiqued by a discussant.)

Session B

Galleria 3

The White House Conference on Families: Reactions and Implications

Panel Members: *Ronald Daly*, U.S. Department of Agriculture, Washington, D.C., *Ronald Pitzer*, University of Minnesota, *Zel Brook*, Linn-Benton Education Service District and Corvallis, Oregon School Board, and *Ildaura Murillo-Rohde*, University of Washington

Organizer and Moderator: *Sharon Alexander*, National Association of State Boards of Education, Washington, D.C.

(Co-sponsored by the Affiliated Councils. Panel discussion on the substantive issues and political realities of the status of the family in 1980.)

Session C

Parlor C

Occupational Involvement, Work Schedules, and Family Interaction

"Unemployment as a Family Stressor," *Patricia Voydanoff*, Merrill-Palmer Institute

"From Night to Day: The Impact of a Shift Change on Family Life," *Jane Hood*, University of Wisconsin-Milwaukee

"Combining Marriage and Career: The Marital Adjustment of Professional Women," *Sharon Houseknecht* and *Anne Macke*, Ohio State University

Moderator: *Peggy Willis*, Pacific Lutheran University

Organizer: *Charles Cole*, Iowa State University

(A panel discussion of current research on unemployment and family stress, dual career marriages and the impacts of work schedule changes on the quality of family life.)

Family Therapy

Session A

Pavilion Room

Structured Preventive Intervention with Marital Dyads: Identifying Change-Inducing Components

Panel Members: *Candyce Russell*, Kansas State University, *Gregory Brock*, University of Wisconsin-Stout, *Harvey Joanning* and *Edward Wilfong*, Texas Tech University, and *Dennis Bagarozzi*, University of Georgia

Discussants: *Jeanette Coufal*, University of Wisconsin-Stout, and *Kenneth Sell*, Catawba College, Salisbury, North Carolina

(A panel of investigators will compare the results of recent research on three "enrichment programs" for couples—MCCP, RE, and BE. Following the presentation, each of the three projects will receive a critique.)



THURSDAY, OCTOBER 23, 1980 CONTINUED

8:30 a.m. to 10:00 a.m.  
International  
Session A  
Parlor E

SECTION MEETINGS I CONTINUED

To Marry or Not to Marry

"Childbearing Outside Marriage," *Elwood Carlson*, University of South Carolina-Columbia

"The Effects of Industrialization and Rates of Singleness: A Comparative Analysis," *Nancy A. Greenwood*, Washington State University (co-authored by *Cary R. Lee*, Washington State University)

"The Timing of Marriage and First Birth in Four Asian Societies," *Ronald Rindfuss*, University of North Carolina-Chapel Hill (co-authored by *Charles Hirschman*, Duke University)

There will be a student discussant.

Presiding: *Wilfried Dumon*, University of Louvain, Belgium

(Presentation of papers, discussant, and audience participation.)

Research and Theory  
Session A  
Ballroom A

Abstract Session

Infants, Young Children and Their Parents

"Father-to-Infant Attachment Behavior in Prenatal Classes and Presence at Delivery," *Brent C. Miller*, and *Sheila L. Bowen*, University of Tennessee

"Multiple Dimensions of Parental Control and Support," *Gary W. Peterson*, University of Tennessee, *Godfrey Ellis*, Oklahoma State University, *Boyd Rollins* and *Darwin Thomas*, Brigham Young University

"Ascriptive Status of the Hearing-Impaired: Its Effects on Self-Esteem," *Godfrey J. Ellis*, Oklahoma State University, and *Harvey C. Brooks*, Washington State University

"Perceptions of Parenthood by Mothers and Fathers," *Viktor Gecas*, Washington State University

Adolescents and Their Parents

"Individuation and Family Development: Using a Family Systems Approach to the Study of Family Interaction," *Catherine R. Cooper* and *Harold D. Grotevant*, University of Texas-Austin

"Sibling Size, Spacing, Birth Order and Sex of Sibling, and the Quality of the Parent-Child Relationships," *Jeannie S. Kidwell*, Texas Tech University

"Family Problem-Solving: The Combined Effects of Interaction, History, and Problem Characteristics on Family Solution Quality," *Richard J. Calligan*, University of Akron

Adult Children and Their Parents

"Intergenerational Exchange and Quality of Life Among the Elderly," *Cary R. Lee*, Washington State University

"Relationship Styles of Married Children and Their Parents," *Judith Fischer*, Texas Tech University, and *Jeffrey Larson*, Iowa State University

"Mothers and Mothers-in-Law," *Lucy Rose Fischer*, University of Minnesota

Chair: *Joan McCord*, Drexel University

(An abstract session, new this year, focusing on interaction between parents and children. There will be 5-minute overviews of each research project, and printed abstracts will be handed out. Further discussions can be arranged informally.)

**THURSDAY, OCTOBER 23, 1980 CONTINUED**

8:30 a.m. to 10:00 a.m.

Research and Theory

Session B

Directors' Suite

**SECTION MEETINGS I CONTINUED**

New Developments in the Actuarial Assessment of Marital and Family Interaction

"Multidimensional Assessment of Marital Interaction: Implications for Treatment and Research," *Douglas K. Snyder*, Wayne State University

"Assessment of Child and Adolescent Personality: An Actuarial Approach," *Charles Gdowski*, Lafayette Clinic, Detroit

"The Relationship of Marital Dysfunction to Psychiatric Disturbance in Children: An Empirical Analysis Using the MSI and PIC," *Douglas Snyder*, Wayne State University, and *Charles Gdowski*, Lafayette Clinic, Detroit

"Assessing the Distribution of Affect Within Marital and Family Relationships," *Joseph C. Lowman*, University of North Carolina-Chapel Hill

Organizer and Moderator: *Douglas K. Snyder*, Wayne State University

(This will be a panel discussion about measurement of marital and family interaction.)

Session C

Galleria 1

Family Stress and Coping—Impact on Children

"Family Stress and Adolescent Drug Use," *Richard Needle*, *Mark Hochhauser*, and *Hamilton McCubbin*, University of Minnesota

"Parental Stress and Coping—Impact on Children with Chronic Illness," *Robert Nevin*, Indiana University at Indianapolis, *Joan Patterson*, *Joan Comeau* and *Betsy Cauble*, University of Minnesota

"Family Coping with Social Stress—Impact on Children in Black Families," *Grace Massey*, University of Connecticut, and *Marie Peters*, Toddler-Infant Experiences, Oakland, California

"The Impact of the Environment on the Coping Efforts of Low-Income Mothers," *Diana Dill* and *Ellen Feld*, Harvard University

Organizer and Moderator: *Hamilton McCubbin*, University of Minnesota

(This will be a panel discussion focusing on stress and coping from both the child and parent perspective)

Minorities Session

Parlor D

Organizer and Chair: *David Baptiste*, New Mexico State University

10:15 a.m. to 11:45 a.m.

Ballroom A

**PLENARY SESSION II**

Decade Preview—The Family Field and the 1980's

Panel Members: *Reuben Hill*, University of Minnesota, *Greer Litton Fox*, Wayne State University, *Felix M. Berardo*, University of Florida, *Jacqueline Wiseman*, University of California-San Diego

Presiding and Moderating: *Joan Aldous*, University of Notre Dame

Presentation of the Osborne Award, *Mary Lou Purcell*, Auburn University, presenter

(Each panel member will present a short paper that will be a prescriptive analysis of the family field in the 1980's. A dialogue between presenters and with the audience will follow.)

12:00 noon to 1:30 p.m.

Pavilion Room

**ROUND TABLE LUNCHEONS**

**LEADERSHIP ROUND TABLES**

37. "Publish or Perish: Some Guidelines for the Novice," *Felix M. Berardo*, University of Florida
38. "The Meaning of Trends in Marriage and Divorce," *Paul C. Glick*, U.S. Bureau of the Census, Washington, D.C.
39. "Childfree Choice—Breaking a Family Rule," *Richard N. Hey*, University of Minnesota

# THURSDAY, OCTOBER 23, 1980 CONTINUED

12:00 noon to 1:30 p.m.  
Pavilion Room

## ROUND TABLE LUNCHEONS CONTINUED

40. "Marriages That Have Lasted Over 50 Years," *Marcia Lasswell*, University of Southern California
41. "Preparing Manuscripts for Publication," *James Walters and Lynda Henley Walters*, University of Georgia

## AFFILIATED COUNCILS AND FAMILY ACTION SECTION ROUND TABLES

42. "Beyond the White House Conference: Implications and Directions for State and Local Family Life Councils," *Jane Dill*, Orange Unified School District, California
43. "Beyond the White House Conference: Implications and Directions for State and Local Family Life Councils," *Barbara Gunn and Emma Yancy*, University of Nevada Extension Service
44. "Beyond the White House Conference: Implications and Directions for State and Local Family Life Councils," *Helen Hartness*, Emeritus, Lewis and Clark College, and *Alice Simpson*, Metro Youth Commission, Portland, Oregon
45. "Beyond the White House Conference: Implications and Directions for State and Local Family Life Councils," *Sander Latts*, University of Minnesota
46. "Beyond the White House Conference: Implications and Directions for State and Local Family Life Councils," *Dorothy Martin*, Colorado State University
47. "Beyond the White House Conference: Implications and Directions for State and Local Family Life Councils," *Arlinda McCumber*, South Dakota State University
48. "Beyond the White House Conference: Implications and Directions for State and Local Family Life Councils," *Michael Sporakowski*, Virginia Tech
49. "Beyond the White House Conference: Implications and Directions for State and Local Family Life Councils," *Godfrey Ellis*, Oklahoma State University

## FAMILY THERAPY SECTION ROUND TABLE

50. "Aids to Counseling with Reconstituted Families: The Use of Masks," *David Baptiste*, New Mexico State University

## ROUND TABLES

Galleria

51. "The Reconstituted Family: Research Findings and Implications," *Nancy J. Bell, Ann Chambers, James Anderson, Robert Bell*, Texas Tech University, *Joe Reaves*, West Texas College, and *Jeffrey Larson*, Iowa State University
52. "The Hospice: A Health Care Program for the Dying and Their Families," *George E. Bodine*, Syracuse University
53. "Growing Up Without Father: The Cognitive and Social Development of Children in Single Parent Families," *Gene Brody and Zolinda Stoneman*, University of Georgia
54. "Sexual Exploitation in the Workplace," *Vaughn R. A. Call*, Boys Town Center for the Study of Youth Development
55. "Women and Retirement," *Peggy J. Cavaghan*, California State University-Sacramento
56. "Coping With Sexual Jealousy," *David P. Drechsler*, David P. Drechsler and Associates, Oak Park, Illinois
57. "The Aging and Aged Developmentally Disabled," *Robert A. Famighetti*, Kean College of New Jersey
58. "Impact of Australian Government and Agencies on Marriage Counseling," *Leslie V. Harvey*, Attorney General's Department, Canberra, Australia

# THURSDAY, OCTOBER 23, 1980 CONTINUED

12:00 noon to 1:30 p.m.  
Galleria

## ROUND TABLE LUNCHEONS CONTINUED

59. "Interactions in Shared Intergenerational Family Living," *Gladys J. Hildreth*, Louisiana State University and *Vicki Schmall*, Oregon State University
60. "Incarcerated Adults and Their Families," *Anita Sue Kolman*, Augsburg College, Minneapolis
61. "Mid-Life Transitions for Men and Women: Facts or Fallacies?" *Herbert Lingren*, University of Nebraska-Lincoln
62. "Sudden Infant Death Syndrome: The Familial Impact," *Betty McEntire*, State of Florida Department of Health and Rehabilitative Services
63. "The Future of the Family: What People Want and What They Expect—Bridging the Gap," *Patsy Morris and Bron Ingoldsby*, Kent State University
64. "An Ecological Approach to Research on the Quality of Family Life," *Kathryn Rettig*, University of Illinois, and *Margaret Bubolz*, Michigan State University
65. "The Development of Intimate Relationships: The Case of Long-Term Unmarried Cohabitation," *Richard K. Kerckhoff*, Purdue University
66. "Helping Husbands Adjust as Wives Change Their Roles," *Craig L. Roberts*, Arizona State University
67. "Ethical and Methodological Problems in Conducting Research in Sex Offenses," *Vicki M. Rose and Susan Randall*, Southern Methodist University
68. "A Framework for Viewing the Quality of Family Life," *Gordon Shipman*, Emeritus, University of Wisconsin-Stevens Point
69. "Gay Men's and Women's Perceptions of Their Relationships with Parents and Early Family Life," *Patsy Skeen*, University of Georgia, *Bryan E. Robinson*, University of North Carolina-Charlotte, and *Carol Flake-Hobson*, University of South Carolina
70. "The Decision Making Process and the Quality of Life for the Elderly Family Member," *Mary Jane S. Van Meter*, Wayne State University
71. "Measuring the Quality of Relationships," *Karen Smith Wampler and Glean S. Powell*, University of Georgia
72. "An Empirical Analysis of Attempts to Pass Federal Legislation for Children and Families (1970-80)," *Raymond Yang, Charles Welch, Maureen Killeen, and John Schacke*, University of Georgia
73. "Equity, Inequity, and Depression Among Married Couples," *Robert Schafer*, Iowa State University

2:00 p.m. to 3:00 p.m.  
Council Suite

## OREGON COUNCIL ON FAMILY RELATIONS FALL MEETING

Presiding: *Peter Fennewitz*, Oregon Council President

2:00 p.m.  
Meet in Hotel Lobby

## SCENIC AUTUMN TOUR

Chair: *Helen Hartness*, Emeritus, Lewis and Clark College

(Bus trip up the beautiful Columbia Gorge and around to the Timberline Lodge on Mt. Hood. Some will stay for dinner and return at 8:00. Some will return at 5:00 to have dinner in town.)

8:30 p.m. to midnight  
Ballroom A

## ALUMNI CELEBRATION

Chair: *Candace Fake*, Burlington County College, New Jersey

(Annual party sponsored by NCFR Students for all conference delegates.)



FRIDAY, OCTOBER 24, 1980

7:00 a.m.  
Hilton Coffee House

# TEXAS COUNCIL ON FAMILY RELATIONS MEETING

Presiding: *Nelwyn Moore*, Texas Council President

8:30 a.m. to 10:00 a.m.

Education  
Session A  
Studio Suite

## SECTION MEETINGS II

Meeting Governmental and Professional Demands for Research-Evaluation in Family Life Education

"Family Life Education and Attitudes Change in Adolescents," *Margaret E. Arcus*, University of British Columbia, and *Thomas Abernathy, Jr.*, University of Saskatchewan

Discussants: *Arthur W. Avery*, University of Arizona, and *Brent Miller*, Utah State University

Organizer and Discussion Leader: *J. Joel Moss*, Brigham Young University

(This session will be a presentation of a study followed by group discussion of issues involved in evaluation and research of educational programs.)

Session B  
Ballroom A

Applying Experiential Learning to Improving the Quality of Life

"A Cognitive-Behavioral Approach to Strengthening Self-Image," *Marcelle Straatman*, Oregon State University

"A Cognitive-Behavioral Approach to Social Skills Training with Shy Persons," *Lynda A. Haynes-Clements*, Louisiana Tech University, and *Leanne Lamke*, Arizona State University

"Integrating Theory and Research: Creativity in the Classroom," *Cecilia D. Gray*, California State University-Sacramento

Presiding: *Marjorie Brownwright*, Oregon State University

(Educational demonstrations in experiential learning will be led by educators. The audience will also be involved in learning new skills and concepts.)

Session C  
Parlor E

Families Cope with a Changing Society

"Surviving a Move: Family Coping Strategies," *Paul Ammons*, *John Wodarski*, and *Josie Nelson*, University of Georgia

"Perception of Self as a Parent by Childfree Men and Women," *Kaye L. Zuengler* and *Richard N. Hey*, University of Minnesota

"Socialization for Family Violence: Beliefs and Disbeliefs," *Ira W. Hutchison*, University of North Carolina-Charlotte

Presiding: *Cladys K. Phelan*, University of Idaho

(A presentation and discussion of several issues illustrating how families react to changing social conditions.)

Family Action  
Session A  
Council Suite

Midlife Transitions and the Impact on the Quality of Marriage and Family Life

"Conceptualization of the Midlife Era: Is It Stagnation, Maintenance or Growth?" *Rosalie Ackerman*, Iowa State University

"Role Strain and Depression in Two-Job Families," *Pat Keith* and *Robert Schafer*, Iowa State University

"Marital Consequences of Women's Educational and Career Reentry," *Jeanne Smith*, University of California-Davis

"Governmental Policies Impacting on Husband-Wife Dyad in the Family System Context," *Peggy Draughn*, Louisiana State University

Organizer and Moderator: *Rosalie Ackerman*, Iowa State University

(A colloquium panel discussion of current research and theory on the mid-life period of the family life cycle in terms of policy implications.)

# FRIDAY, OCTOBER 24, 1980 CONTINUED

8:30 a.m. to 10:00 a.m.

Family Action

Session B

Parlor D

## SECTION MEETINGS II CONTINUED

### Forum on Premarital Counseling and Enrichment Programs

"In-Lawing Made Easier," *Glen Jensen*, Utah State University

"Evaluating the Effectiveness of a Premarital Enrichment Program: An Assessment of Relationship Adjustment," *Carl Ridley, Stephen Jorgensen, Anita Morgan, and Arthur Avery*, University of Arizona

"Education for Marriage: Evaluation and Program Implications," *Rosalie Norem*, Iowa State University

"Premarital Evaluation," *David Fournier*, Oklahoma State University

Organizer and Moderator: *Charles Hennon*, University of Wisconsin-Madison

(This session will be a discussion of current trends in pre-marital counseling and enrichment programs with regard to assessing the effectiveness of the programs, and suggestions will be made for improving the effectiveness in future programs.)

Session C

Galleria 1

### Remarriage: Second Families Assessing the Quality of Family Life

Panel Members: *Kay Pasley and Marilyn Ihinger-Tallman*, Washington State University; *David Mills*, Seattle, Washington; and *Daniel Safran*, San Francisco Center for the Study of Parent Involvement

Moderator: *Irving Tallman*, Washington State University

Organizers: *Marilyn Ihinger-Tallman and Kay Pasley*, Washington State University

(A dialogue of panelists discussing current research, theory, and practice on remarriage, with social policy implications.)

Family Therapy

Galleria 2

## SECTION BUSINESS MEETING

Presiding: *Marcia Lasswell*, University of Southern California, Section Chair

(Section members will enjoy coffee, juice, and rolls.)

International

Session A

Pavilion Room

### We as Individuals or as a Group

"Marital Relations in Colombia," *Bron Ingoldsby*, Kent State University

"Intimacy as a Part of Family Interaction," *Floyd M. Martinson*, Gustavus Adolphus College, St. Peter, Minnesota

"Measuring Marital Integration," *Sylvia Viljoen*, University of South Africa

Discussant: *Maren Choate*, Modesto, California

Presiding: *Maximiliane Szinovacz*, Florida State University

(Presentation of papers and discussion by a prepared discussant as well as the audience.)

Session B

Parlor C

### Equals or Equally Good

"And the Lord said, 'Behold, the People is One': An Investigation in Human Feelings and Esteem, One for Another, Among University Students in the Middle East, West Germany, and the United States," *Virginia Frei Grundstrom*, Northern Michigan University

"Managers and Their Wives: A Cross Cultural Replication," *Mildred Weil and Martin Laurence*, Paterson College, New Jersey

"Parental Sharing of Child Care Tasks in Sweden," *Linda Haas*, Indiana University

"Employment Role and Division of Household Tasks in Korean Immigrant Families," *Kwang Chung Kim*, Western Illinois University (co-authored by *Won Moo Hurh*, Western Illinois University)

Discussants: *Brenda and Gordon Munro*, University of Alberta

Presiding: *Eugen Lupri*, University of Calgary

(Presentation of papers and discussion by prepared discussants as well as the audience.)

**FRIDAY, OCTOBER 24, 1980 CONTINUED**

8:30 a.m. to 10:00 a.m.

**Research and Theory**

Galleria 3

**SECTION MEETINGS II CONTINUED**

**SECTION BUSINESS MEETING**

Presiding: *Pauline Boss*, University of Wisconsin-Madison, Section Chair

(Continental breakfast will be served to Section members. Also an award will be announced for the "out-standing research paper" for 1979.)

10:15 a.m. to 11:45 a.m.

Ballroom A

**PLENARY SESSION III**

Marriages in Crisis: A Systems Perspective on Treatment and Prevention

Address: "Marriage System," *Augustus Napier*, The Family Workshop, Atlanta, Georgia

Presentation of the Distinguished Service to Families Award and the Commendation Award, *Cecilia*

*Gray*, California State University-Sacramento, presenter

Presiding: *Gerhard Neubeck*, University of Minnesota

12:00 noon to 1:00 p.m.

Directors' Suite

**STUDENTS AND YOUNG PROFESSIONALS BUSINESS MEETING**

Presiding: *Nancy Bueche*, University of North Carolina-Greensboro

1:00 p.m. to 2:30 p.m.

**Education**

Session A

Ballroom A

**SECTION MEETINGS III**

Holistic Health and the Middle Years

"Gerontological Research and Holistic Health," *George Fitzelle*, University of Rhode Island

"Stress and Nutrition in the Middle Years," *Mark Tager*, Kaiser-Permanente Medical Foundation, Portland, Oregon

"Sexuality as a Health Entity in the Middle Years," *Joseph Trainer*, University of Oregon Medical School, Portland

"Physical Activity as it Affects Health and Longevity at Midlife," *Johnette Peery*, Portland Community College

Organizer and Chair: *Dean K. Hoffman*, Indian Health Service, U.S. Public Health Service, Reno, Nevada

(Presentation of four components of holistic health in the middle years (45-65), followed by audience participation.)

Session B

Parlor C

Improving Communication Skills

"Communications as a Process Vis-a-Vis the Quality of Life: Empirical Findings and Field Experience,"

*John Strong*, Iowa State University

"A Model for Communication Skills Relationship Enhancement Training/Parent Education Practicum Within a University Parent Education Course," *Robert E. Keim*, Northern Illinois University

Presiding: *Walter Beam*, Indiana University

(Presentation of two models of communication skills training, illustrating how university students and community groups benefited.)

**Family Action**

Session A

Pavilion Room

Marriage Enrichment: Explanation and Demonstration

Organizers and Leaders: *David and Vera Mace*, A.C.M.E., Winston-Salem, North Carolina

Presiding: *Anna Cole*, Marriage Counseling Associates, Ames, Iowa

(A workshop on marriage enrichment with a brief explanation of what it means and a demonstration with audience participation of how to conduct marriage enrichment workshops.)

# FRIDAY, OCTOBER 24, 1980 CONTINUED

1:00 p.m. to 2:30 p.m.

Family Action

Session B

Council Suite

## SECTION MEETINGS III CONTINUED

Meeting the Needs of Aging Families: Applying Theory and Research—A Panel Discussion in Honor of Muriel Brown

Panel Members: *Clifton Barber*, Colorado State University, *Jane Oyer*, Michigan State University, *Wayne Seelbach*, Lamar University, *Timothy Brubaker*, Miami University, Ohio, *James DeBurger*, University of Louisville, and *Jerome Waldie*, Executive Director, White House Conference on Aging, Washington, D.C.

Organizers and Co-chairs: *James DeBurger*, University of Louisville, and *Timothy Brubaker*, Miami University, Ohio

(Focal concerns of older persons and families in the decade ahead; a panel discussion and assessment of the needs of older persons and their families in the 1980's.)

Session C

Parlor D

Military Families: Stresses and Supports

"Gender Roles and Wives' Coping Patterns," *Joan Patterson and Hamilton McCubbin*, University of Minnesota

"Navy Family Separations and Physician Utilization," *D. Stephen Nice*, Naval Health Research Center, San Diego

"Factors Contributing to Divorce in Air Force Families," *John Williams*, U.S. Air Force Academy, Colorado

"Attitudes Toward Family Support Programs Among Military Families," *Dennis Orthner and Gary Bowen*, University of North Carolina-Greensboro

"Navy Family Service Centers: Development and Implementation," *Ann O'Keefe*, Department of the Navy

Presiding: *Dennis Orthner*, University of North Carolina-Greensboro

(A symposium discussion of researchers on the military family, addressing the issues of special problems and stresses of being a military family and assessing the effectiveness of programs and support systems provided for them.)

Family Therapy

Session A

Galleria 1

Family Law as a Counseling Issue

Panel Members: *Joyce Cohen*, Oregon State Legislature, *Jay Folberg*, Lewis and Clark University Law School, *Mark Lohman*, Divorce Mediator, McLean, Virginia, and *Nancy Ann Holman*, Judge, King County Superior Court, Seattle

Presiding: *Stephen Bahr*, Brigham Young University

(A symposium on Family Law. The program will investigate the interface between lawyers, judges, legislators, family researchers and therapists.)

Session B

Parlor E

Theoretical Variations on Counseling

"Friendly Persuasion: A Social-Psychological Model of Counseling," *Janis Pulliam-Krager*, California State University-Long Beach

"You Can Go Home Again—A Family Systems Approach for Victims of Sexual Abuse," *Marlynn Mason*, Private Practice, Minneapolis, Minnesota

"Are We Born Lovers?" *Terry Smith Hatkoff*, California State University-Northridge

"Orientations Scale: Assessing the Beliefs, Behaviors, and Personality Attributes of Family Therapists," *Robert Green*, Virginia Commonwealth University

Presiding: *Arthur Williams*, Private Practice, Anamosa, Iowa

(Three theoretical positions on counseling will be presented as well as a scale for assessing attributes of family therapists.)



FRIDAY, OCTOBER 24, 1980 CONTINUED

1:00 p.m. to 2:30 p.m.

Family Therapy

Session C

Studio Suite

SECTION MEETINGS III CONTINUED

Similarities and Differences in Adjustment Following Divorce From or Death of a Spouse

"Men in Crisis—Widowers," *Jane Burgess-Kohn*, University of Wisconsin-Waukesha

"A Comparison of the Grief Process in Divorce with the Bereavement Model of Elizabeth Kubler-Ross," *John Crosby*, University of Kentucky

Moderator: *Gerald Larue*, University of Southern California

(A panel on how the grief process operates following either divorce or the death of a spouse. There are special similarities as well as important differences.)

International

Galleria 3

SECTION BUSINESS MEETING

Presiding: *Jan Trost*, University of Uppsala, Sweden, Section Chair

Research and Theory

Galleria 2

The Meaning and Measurement of Family Interaction

Presenters: *Michael Lamb*, University of Utah, and *Gordon Stephenson*, University of Wisconsin-Madison

Presiding: *Pauline Boss*, University of Wisconsin-Madison

(This special session focuses on two old-fashioned issues—reliability and validity. Much is written about ways of recording sequences of interactive behaviors reliably, but little is said about the problem of choosing what to focus on and how to distill information from descriptive records. Our guest presenters say they can't claim answers, but at least they will define and discuss the crucial issues.)

2:45 p.m. to 3:45 p.m.

Pavilion Room

BURGESS AWARD LECTURE AND PRESENTATION

Presentation of Burgess Award, *Murray Straus*, University of New Hampshire, presenter

Address: "History and the Family," *Glen Elder*, Cornell University, 1979 Burgess Award Recipient

Presiding: *Murray Straus*, University of New Hampshire

4:00 p.m. to 5:30 p.m.

Pavilion Room

BURGESS AWARD RECEPTION AND DISCUSSION

Presiding: *Murray Straus*, University of New Hampshire

4:00 p.m. to 5:30 p.m.

Education

Session A

Parlor C

SECTION MEETINGS IV

From Research to Educational Programming at the Work-Family Interface

"Problem Perception and Problem Solving Strategies for Dual Career Couples," *Dianne K. Kieren*, University of Alberta

"Work Stress and Personal-Family Health," *Jane Ligowski*, University of Alberta

"Job Sharing: Maximizing Career and Family Potentials," *Brenda and Gordon Munro*, University of Alberta

"Designing After Hours Services for Dual Work Families," *Doris Badir*, University of Alberta

Presiding: *Barbara Jeffrey*, University of Alberta

(This workshop will begin by identifying various work-family role dilemmas. Small group sessions focusing on educational program ideas for schools and community agencies will follow.)

Session B

Room 416

Getting Family Life Education to the People

"A Community Council Provides Education Through Volunteers," *C. Daniel Fisher*, Family Life Council of Greater Greensboro

"The Use of Radio," *Lynn Scoresby*, Brigham Young University

"The Use of Public Schools," *Terrance Olson*, Brigham Young University

"Family Education: A Consortium Approach," *Frank Apolonio*, Weber State University

"Using the Cooperative Extension Service," *T. Scott Lane*, University of Georgia

Organizer and Moderator: *Brent Barlow*, Brigham Young University

(This "how to do it" panel will present various methods to deliver family life education to lay audiences.)

# FRIDAY, OCTOBER 24, 1980 CONTINUED

4:00 p.m. to 5:30 p.m.  
Education  
Session C  
Studio Suite

## SECTION MEETINGS IV CONTINUED

### Strengthening Families to Redirect Drug-Prone Youth

Presenters: *Robert H. Coombs and Ted Eckman*, University of California-Los Angeles  
(A social learning intervention approach with youth will be illustrated with slides followed by a demonstration of family strengthening techniques.)

Family Action  
Galleria 1

## SECTION HOSPITALITY HOUR AND BUSINESS MEETING

Presiding: *Charles Cole*, Iowa State University, Section Chair  
(Section members are encouraged to participate in this session.)

Family Therapy  
Session A  
Galleria 2

### Clinical Sociology: Contributions to Family Therapy

Panel Members: *William F. Kenkel*, University of Kentucky, *Sandra Schrader*, University of Connecticut, *C. Ray Fowler*, American Association for Marriage and Family Therapy, Upland, California, and *John Hudson*, Arizona State University

Moderator: *Thomas Lasswell*, University of Southern California

(A symposium on the revival of this topic. The participants will review the history, the present, and the future of the application of sociology in clinical pursuits.)

Session B  
Council Suite

### Divorce Therapy: The First Decade Review of Research and Implications for Practice

Panel Members: *Cheryl Storm*, Purdue University, and *Ann Goetting*, Western Kentucky University

Organizer and Moderator: *Douglas Sprenkle*, Purdue University

(A symposium on outcome research in divorce therapy will focus on a critique of empirical research and on research needs for the future.)

International  
Session A  
Parlor D

### Family and Disaster

Panel Members: *Wilfried Dumon*, Catholic University of Louvain, Belgium, *Pauline Boss*, University of Wisconsin-Madison, *Hamilton McCubbin*, University of Minnesota, and *Jan Trost*, Uppsala University, Sweden

Discussant: *Charles Figley*, Purdue University

Organizer: *Orjan E. Hultaker*, Uppsala University, Sweden

("Family and Disaster" was the theme of an International seminar held at Uppsala, Sweden, June 1980. The seminar was co-sponsored by the Committee on Family Research of the International Sociological Association and the International Section of NCFR. A panel will present some of the main ideas from the Uppsala seminar, which dealt with families and disaster from practical, theoretical, and research perspectives.)

Session B  
Directors' Suite

### Pre- and Post-Planning

"Issues in Cross-Cultural Therapy: The Case of International Graduate Student Families," *Ephraim A. Frankel*, University of Wisconsin-Madison (co-authored by *Imogene Higbie*, University of Wisconsin-Madison)

"The Permanent Availability Model for Marriage: Canadian-American Comparisons," *Jean Veevers*, University of Western Ontario

"Preparation for and Satisfaction with Retirement Among Canadians," *Thomas J. Abernathy*, University of Saskatchewan (co-authored by *Margaret Arcus*, University of British Columbia)

"Effects of Acute Hospitalization of a Child on His Family," *Sandra Catts-Levy*, Haifa University, Israel

There will be a student discussant.

Presiding: *Constantina Safilios-Rothschild*, Pennsylvania State University

(Presentation of papers and discussion by a prepared discussant as well as with the audience.)

# FRIDAY, OCTOBER 24, 1980 CONTINUED

4:00 p.m. to 5:30 p.m.

Research and Theory

Session A

Parlor E

## SECTION MEETINGS IV CONTINUED

### The Current Status of Theories of Black Family Life

"New Perspectives on the Afro-American Family Experience," *Walter Allen and Richard English*, University of Michigan

"Changing Perspectives on Black Families in Empirical Research," *Leonor B. Johnson*, The Urban Institute, Washington, D.C.

"Stress Factors in Middle Class Black Families," *Harriette P. McAdoo*, Howard University

"Theories of Black Family Life and the African Imperative," *Wade W. Nobles*, Black Family Research Projects, San Francisco

Discussant: *Robert Staples*, University of California-San Francisco

Organizer: *Noel Cazenave*, Temple University

(This panel session provides an integration of research on Black families, toward the development of a theoretical base for further understanding of Black family structure and interaction.)

Session B

Ballroom A

### Poster Session

"Consistency of Sex Role Attitudes of Women, 1962-1977," *Arland Thornton and Deborah Freedman*, University of Michigan

"Time Use and Family Life: The Relationship of Household Division of Labor and Perceived Quality of Family Life," *Karen P. Goebel, Charles B. Hennon, and Norleen M. Ackerman*, University of Wisconsin-Madison

"Sex Role Norms and Behavior in Single Parent Families," *Marie Richmond-Abbott*, Eastern Michigan University

"Career and Family Roles of Dual Career Couples: Women in Academia and Their Husbands," *Jo Ann Nicola*, California State University-Sacramento

"Values and Costs of Children Before and After the First Child," *Brent C. Miller*, Utah State University, *Donna L. Sollie*, Texas Tech University, and *Randy M. Jones*, Utah State University

"Sexual Inequality and the Quality of Family Life in American States," *Murray A. Straus and Kersti Yllo*, University of New Hampshire

"The Relation Between Marital Adjustment and the Use and Abuse of Alcohol by Married Women," *Diane Logan*, University of Georgia

"The Relationship Between Family Environment and Dysfunctional Eating Behavior: Toward Identification of Pre-Anorexic Families," *Nancy E. Johnson and Pauline G. Boss*, University of Wisconsin-Madison

"The Status of Women and Wife-Beating in the U.S.: A Multi-Level Analysis," *Kersti Yllo*, University of New Hampshire

"The Effect of Marital Communication Styles Upon Marital Problems," *Albert Banwart*, University of Wyoming

"Sexual Interaction Sequences in Ongoing Relationships," *David L. Weis*, Douglass College, Rutgers University

"Equity, Equality and Reward Levels as Predictors of Premarital Satisfaction," *Rodney M. Cate, June M. Henton, and Sally Lloyd*, Oregon State University

"The Effect of Occupational Experience on Marital Satisfaction of Token Women," *Pamela Johnson Riley and Bryan Spykerman*, Utah State University

"Family Altruism and Family Stress: The Living Related Kidney Donor," *Roberta G. Simmons*, University of Minnesota

Presiding: *Maximiliane Szinovacz*, Florida State University, and *Randal Day*, South Dakota State University

(This type of session is a new format being tried this year. The researchers will be spread out through the room, with posters identifying the titles of their projects. The audience can move about the room, interacting personally with the authors as they explain their research. The researchers on the east side will emphasize Sex Roles, and Gender as they relate to the quality of family life. The researchers on the west side will focus on Interaction Between the Larger Political/Social Environment and the Family and on Interaction Inside the Family System Itself.)

# FRIDAY, OCTOBER 24, 1980 CONTINUED

4:00 p.m. to 5:30 p.m.  
Research and Theory  
Session C  
Galleria 3

## SECTION MEETINGS IV CONTINUED

### Networks and Dyads: Close Relationships in Social Context

"Dyadic and Social Network Interaction from Premarriage to Marriage," *Catherine A. Surra*, Utah State University

"The Development of Premarital Relationships: Changing Patterns of Interaction Among Dating Partners and Their Social Networks," *Robert M. Milardo*, University of Southern California

"The Role of Parents in Premarital Relationship Development," *Leigh A. Leslie*, Yale University

"Reciprocal Processes of Parent-Child Influence," *Beverly Purrington*, Denison University

Organizers: *Michael P. Johnson and Ted L. Huston*, Pennsylvania State University

(This session will be a panel that will focus on interaction with premarital as well as family social networks.)

6:00 p.m. to 7:00 p.m.  
Council Suite

## NCFR ETHNIC MINORITIES SECTION BUSINESS MEETING AND SOCIAL HOUR

Presiding: *David Baptiste*, New Mexico State University

8:00 p.m. to 9:00 p.m.  
Ballroom A

## NCFR PRESIDENTIAL ADDRESS

Address: "Ideology and Sexuality," *Ira L. Reiss*, University of Minnesota, NCFR President

Presiding: *Kate B. Garner*, Greensboro, North Carolina, NCFR President-Elect

9:00 p.m. to Midnight  
Pavilion Room

## A NIGHT AT THE CABARET

Chair: *Helen Thun Hartness*, Emeritus, Lewis and Clark College, Portland, Oregon

(A reception with combo, refreshments and Dutch treat bar.)

# SATURDAY, OCTOBER 25, 1980

7:45 a.m. to 8:30 a.m.  
Galleria 2

## EDUCATION SECTION BUSINESS MEETING

Presiding: *George P. Rowe*, University of Nebraska-Lincoln, Section Chair

(Continental breakfast will be served to members of the Section while business is being conducted.)

8:30 a.m. to 10:00 a.m.  
Ballroom A

## PLENARY SESSION IV

### The Ecology of Families with Young Children

Address: "Environmental Stresses and Supports in Parent-Child Activities," *Urie Bronfenbrenner*, Schurman Professor of Human Development and Family Studies and Psychology, Cornell University

Address: "Informal Support Systems," *Moncrieff Cochran*, Cornell University

Presentation of the Student Award, *Steve Elliott*, Bowman Gray School of Medicine, presenter

Presiding: *Carolyn Love*, J. C. Penney Company, New York City

(This session is sponsored by the Students and Young Professionals. The presentations will examine the nature of support systems of families with young children, and then explore methods of intervening in these systems.)

10:15 a.m. to 10:45 a.m.  
Ballroom A

## ANNUAL NCFR BUSINESS MEETING

Presiding: *Ira L. Reiss*, University of Minnesota, NCFR President



# SATURDAY, OCTOBER 25, 1980 CONTINUED

11:00 a.m. to 12:30 p.m.

## Education

Session A  
Ballroom A

## SECTION MEETINGS V

### Parent Education: Past, Present, and Future

"A Brief History of Parent Education and Participation," *Catherine Chilman*, University of Wisconsin-Milwaukee

"Childrearing in Black Families: Potential Continuities and Discontinuities Between Home and School," *Marie F. Peters*, Toddler-Infant Experiences Studies, Oakland, California

"Influencing the Reciprocal Interaction Between Parents and the Infant," *Sherry T. Boyd*, University of Oregon Health Science Center, Portland

Facilitator: *Anita F. Stafford*, Texas Woman's University

(The historical development of parent education will be reviewed, followed by two empirical studies of parents with infants. Implications for the future will be discussed with the audience.)

Session B  
Galleria 3

### Improving the Quality of Life in the Later Years

"The Quality of Marital Interaction of Older Couples: From Theory to Education," *Francis D. Glamser*, University of Southern Mississippi, *Norah Keating and Pat Leginsky*, University of Alberta

"You and Your Aging Parent: A Community Education Project," *Vicki Schmall*, Oregon State University

Presiding: *Sheila Ames*, Oregon State University

(Two models will be presented to improve life for older persons. A panel will focus on marital interaction and then a group-work approach for families with aged relatives will be described.)

## Family Action

Session A  
Parlor C

### Self-Disclosure and Relationship Quality

"Breadth and Depth of Self-Disclosure as a Function of Length and Type of Relationship," *Donna Sollie*, Texas Tech University

"Sex Roles and Situational Influences on Self-Disclosure—Marital Satisfaction Relationship," *Stephen Jorgensen*, University of Arizona

"Self-Disclosure, Self-Other Esteem and Dyadic Adjustment Among Nonmarried Cohabiting Couples," *Charles Cole and Stephen Goettsch*, Iowa State University

Moderator: *Sharon Houseknecht*, Ohio State University

Organizer: *Charles Cole*, Iowa State University

(A panel of researchers discuss the conceptual meaning of self-disclosure and examine research findings in light of theories of self-disclosure.)

Session B  
Parlor E

### Divorce and Beyond: Establishing a New Identity

"The Binuclear Family: An Emerging Life Style for Postdivorce Families," *Constance R. Ahrons*, University of Wisconsin-Madison

"Journey Through Divorce: Personal Reflections," *Charles B. Hennon*, University of Wisconsin-Madison

Organizer: *Emily Brown*, Divorce and Marital Stress Clinic, Arlington, Virginia, and the Focus Group on Divorce and Divorce Reform

Presiding: *Dianne Flynn*, Iowa State University Extension, Sioux City

(A symposium on post-divorce life adjustments.)

# **SATURDAY, OCTOBER 25, 1980 CONTINUED** **SECTION MEETINGS V CONTINUED**

11:00 a.m. to 12:30 p.m.

**Family Therapy**  
**Session A**  
**Parlor D**

## Assessment Scales as Counseling Tools

- "Assessing Parent Satisfaction," *Helen K. Cleminshaw*, University of Akron
  - "The Use of the Circumplex Model of Family Systems in a Diagnostic Interview with a Honolulu Family," *Philip Mark*, Makiki Christian Church, Honolulu
  - "Family Conflict: Detection Strategies," *Richard Berrett*, Private Practice, Fresno, California
  - "Assessing the Serious Juvenile Offender and His Family," *Bernard Davidson*, Texas Tech University, *David Dosser and Rand Conger*, University of Georgia (*Keith Bramlett, Raymond Yang, Joe Pittman, Joseph Weber*, University of Georgia, co-authors)
- (This session will focus on four new assessment scales with discussions of their use in varied therapeutic settings.)

**Session B**  
**Galleria I**

## Counseling Issues in Relationships

- "Relationship Enhancement for Single Females: Interpersonal Network Intervention," *Debi Hegi*, Texas Tech University
  - "Premarital Sexual Guilt," *Edward Herold*, University of Guelph
  - "Parental Influence on Love, Sexual Behavior and Sexual Satisfaction of Never-Married College Students," *Carol Darling*, Florida State University
  - "The Dynamics of Client Sabotage and Resistance in Sex Therapy," *Laura Schlessinger*, private practice, Los Angeles, California
- Presiding: *Bunny Duhl*, Boston Family Institute, Massachusetts
- (Four papers on counseling issues in relationships including premarital and marital sex, and parental influence.)

**International and Family**  
**Therapy**  
**Galleria 2**

## Parents Without Custody

- Panel Members: *Joan Aldous*, University of Notre Dame, *Robert S. Weiss*, University of Massachusetts-Boston, *Jan Trost*, Uppsala University, *Frederick Duhl*, Boston Family Institute, *Rona Klein*, Wellesley College, *Wilfried Dumon*, Catholic University of Louvain, Belgium, and *Stanley Cohen*, University of Oregon
- There will be a student discussant.

Organizer and Moderator: *Susan Anderson-Khleif*, Wellesley College

(This is a discussion session headed by a panel of colleagues who are interested in divorce, the dynamics of single parent family life, and the situation of parents without custody. Panel members will raise key issues, but the emphasis will be on an exchange of ideas with those attending the session. Central themes for discussion include: problems of non-custodial parents; the dynamics of the "new family" relationships between ex-spouses and between children and parents who do not have custody; and related policy issues in visitation, custody, and support.)

**Research and Theory**  
**Session A**  
**Studio Suite**

## Behavioral Assessment of Marital Interaction

- "Affective Responsiveness in Marital Interaction," *John Gottman*, University of Illinois
  - "Assessing Couple Interaction: The Dyadic Interaction Scoring Code," *Erik Filsinger*, Arizona State University
  - "Mechanically Aided Data Collection," *Richard Holm*, University of Washington
  - "Recent Theoretical Developments and Challenges for Couple's Therapy," *Robert L. Weiss*, University of Oregon
  - "Inventive Behavioral Approaches to the Study of Marital Quality and Interaction," *Robert Lewis*, Arizona State University
- Organizers: *Robert Lewis and Erik Filsinger*, Arizona State University
- (This panel presents the "state of the art" regarding the measurement of couple interaction theory. Hardware and software will be discussed.)

## SATURDAY, OCTOBER 25, 1980 CONTINUED

11:00 a.m. to 12:30 p.m.  
Research and Theory  
Session B  
Forum Suite

### SECTION MEETINGS V CONTINUED

#### Abstract Session

- "Blended Families: Parental Power and Role Structures," *Jean Giles-Sims*, Texas Christian University
- "Life Satisfaction and Well-Being: A Study of Recently Divorced Men and Women," *Rita Erskine*, Cascade Research Center, Vancouver, Washington
- "Family Relationships and Coping Styles of the Corporate Family," *Thomas P. Gullotta and Kevin Donohue*, University of Connecticut, *Scott Stevens*, Glastonbury Youth Services, and *Vicki Clark*, University of Connecticut
- "The Quality of Family Life: Offenders and Their Families," *Robert L. Hampton*, Connecticut College and Children's Hospital Medical Center, Boston
- "Husbands and Wives: Varying Perceptions of the Decision to Divorce," *Lisa Baker*, Purdue University
- "Changing Family and Changing Family Policy," *Wilfried Dumon*, Catholic University of Louvain, Belgium
- "Coping Behavior in Families with Acquisition of a New Member by Birth," *Jacqueline Ventura*, University of Wisconsin-Madison

Presiding: *James Koval*, Oregon State University

(This session focuses on the Stress of Family Boundary Changes. Five minute reviews will be given for each paper by the author, followed by distribution of the abstract to the audience. Discussions will follow.)

## PRE-CONFERENCE WORKSHOPS

### TUESDAY, OCTOBER 21, 1980

9:00 a.m. to 10:30 a.m.  
Parlors C and D

#### QUALITY OF FAMILY LIFE IN THE MILITARY

##### Orientation to Military Family Programs and Policy

Introduction: *Dennis K. Orthner*, University of North Carolina-Greensboro

U.S. Navy: *Cdr. Robert Moffit*, Navy Family Program

U.S. Marines: *Maj. Charles Bellis*, Marine Corp Family Service Program, Washington, D.C.

U.S. Air Force: *Cecile Landrum*, Department of the Air Force

U.S. Army: Army Community Center representative

Discussion and Questions:

Moderator: *Barbara A. Chandler*, LCDR (ret.), Arlington, Virginia

11:00 a.m. to 12:00 noon  
Parlors C and D

#### Changing Dimensions of Military Family Life

"Attitudes Toward Family Support Programs Among Military Families," *Richard Brown*, University of North Carolina-Greensboro

"Research Needs of Military Families: Priorities and Prospects," *Gerald Croan*, Westinghouse National Issues Center

Presiding: *Dennis K. Orthner*, University of North Carolina-Greensboro

# PRE-CONFERENCE WORKSHOPS CONTINUED

TUESDAY, OCTOBER 21, 1980 CONTINUED

1:30 p.m. to 4:00 p.m.

## QUALITY OF FAMILY LIFE IN THE MILITARY CONTINUED

### Workshops on Military Families

Parlors C & D

Parlor E

Room 416

Council Suite

- A. Military Family Research: *Dennis K. Orthner*, University of North Carolina-Greensboro
- B. Military Family Policy/Family Impacts: *Robert M. Rice*, Family Service Association of America, New York City
- C. Marriage and Family Enrichment: *Captain David Hunsicker*, Chaplain, Navy Family Service Center, Norfolk, Virginia
- D. Military Family Stress: *Hamilton I. McCubbin*, University of Minnesota  
Workshop objectives: (1) determine critical issues and priorities; (2) examine obstacles to development; (3) assess major resources; (4) evaluate strategies for bringing about improvements for families.

4:00 p.m. to 5:00 p.m.

Parlors C & D

### Presentation and Discussion of Workshop Results

Co-Moderators: *Dennis K. Orthner*, University of North Carolina-Greensboro, and *Barbara A. Chandler*, LCDR (ret.), Arlington, Virginia

7:30 p.m. to 9:00 p.m.

Galleria 2

### Presentation -- "Play for Living"

(This is a drama designed to portray family dynamics associated with deployment and separation in the military.)

Audience interaction and discussion

9:00 p.m.

Galleria 3

### Reception for Participants

Sponsored by the Navy League, *Captain William F. Ingraham*, USN (Ret), Milwaukie, Oregon, chair

(The purpose of this workshop is to provide persons interested in family services, education, and research an opportunity to explore seriously issues related to improving the quality of life among military families. The workshop will encourage meaningful and continuing dialogue between interested professionals in and out of the military.)

TUESDAY, OCTOBER 21, 1980 THROUGH WEDNESDAY NOON, OCTOBER 22, 1980

8:30 a.m. to 10:00 a.m.

Session A

Galleria 1

## THEORY CONSTRUCTION AND RESEARCH METHODOLOGY WORKSHOP

### Theoretical Perspectives on Boundary Maintenance in Intimate Relationships

"Jealousy and Trust: Unexplored Dimensions of Social Exchange Dynamics," *Gerald W. McDonald and Marie Withers Osmond*, Florida State University

"Friendship and Marriage: An Interactional, Developmental Perspective," *Judith L. Fischer, Donna L. Sollie, and Jane Cardea*, Texas Tech University

Discussant: *Michael P. Johnson*, Pennsylvania State University

Presiding: *Marilyn Ihinger-Tallman*, Washington State University

Session B

Galleria 2

### Practicum on Research Design and Execution

"The Management of P-Technique with Marital Dyads," *Marsha L. Roberts*, Washington State University

Discussants: *David M. Klein*, University of Notre Dame, and *Murray A. Straus*, University of New Hampshire

Presiding: *William T. Southerly*, Purdue University



## PRE-CONFERENCE WORKSHOPS CONTINUED

### TUESDAY, OCTOBER 21, 1980 CONTINUED

8:30 a.m. to 10:00 a.m.

Session C

Galleria 3

#### THEORY CONSTRUCTION AND RESEARCH METHODOLOGY WORKSHOP CONTINUED

##### The Family's Conception of Itself

"Family Identity and Normalcy: An Exploration," *Katrina Johnson*, University of Notre Dame

"Family Pride," *Elizabeth Socha Davis*, University of Wisconsin-Madison

Discussants: *Karen Altergott*, University of Minnesota, and *Orjan Hultaker*, Uppsala University

Presiding: *Dennis Guernsey*, Fuller Theological Seminary

10:30 a.m. to 12:00 noon

Session D

Galleria 1

##### Conundrums of Interaction, Perception, and Meaning in Marriage and Family Life

"A Topographical Analysis of Marital Interaction," *James M. White*, Brandon University, Manitoba

"Paradoxes, Double-binds, and Reflexive Loops: A Comparison of Two Theoretical Perspectives and a Suggested Methodology," *Vernon E. Cronen*, University of Massachusetts, *Kenneth M. Johnson*, University of Kansas-Lawrence, *John Lannamann* and *W. Barnett Pearce*, University of Massachusetts

Discussants: *Mary Fitzpatrick*, University of Wisconsin-Madison, and *David H. Olson*, University of Minnesota

Presiding: *Richard J. Gelles*, University of Rhode Island

Session E

Galleria 2

##### Removing Obstacles to the Utility of Exchange Theory for the Analysis of Marriage and Family Life

"Conceptual Issues in the Integration of Economic and Social Exchange Theories for Application to Family Research," *Kathryn D. Rettig*, University of Illinois

"Beyond Utilitarian Exchange: Toward an Interpretive Theory of Exchange and Power," *Kenneth E. Morris*, University of Georgia

Discussants: *Ephraim Frankel*, University of Wisconsin-Madison, and *Thomas A. Cornille*, Florida State University

Presiding: *Maximiliane Szinovacz*, Florida State University

Session F

Galleria 3

##### Rationality and Reproduction

"The Process of Decision-Making and Fertility," *Jan Trost*, Uppsala University

Discussants: *Pauline Boss*, University of Wisconsin-Madison, and *Gary R. Lee*, Washington State University

Presiding: *Brent C. Miller*, Utah State University

1:30 p.m. to 3:00 p.m.

Session G

Galleria 1

##### Competent Persons and Intimate Relationships

"Distinctiveness of Interpersonal Competence in Long- Versus Short-Term Relationships," *Erik Filsinger*, Arizona State University

"Personality and Marriage: Toward a Theoretical Linkage," *William J. Doherty*, University of Iowa

Discussants: *Lyle E. Larson*, University of Alberta, and *Sharon Price-Bonham*, University of Georgia

Presiding: *Charles Cole*, Iowa State University

## PRE-CONFERENCE WORKSHOPS CONTINUED

### TUESDAY, OCTOBER 21, 1980 CONTINUED

1:30 p.m. to 3:00 p.m.

Session H  
Galleria 2

#### THEORY CONSTRUCTION AND RESEARCH METHODOLOGY WORKSHOP CONTINUED

The History and Future of Theorizing About the Family in Sociology and Psychology

"Family Theory: From Roots to Falling Leaves," *Darwin L. Thomas* and *Jean E. Kleber*, Brigham Young University, and *Richard Calligan*, University of Akron

Discussants: *Joan Aldous*, University of Notre Dame, and *Carlfred Broderick*, University of Southern California

Presiding: *Viktor Cecas*, Washington State University

Session I  
Galleria 3

#### Intergenerational Linkages in Individual and Family Development

"Lineages as Units of Analysis: New Avenues for the Study of Individual and Family Careers," *Gunnild O. Hagestad* and *Roger A. Dixon*, Pennsylvania State University

Discussants: *Glen Elder*, Cornell University, and *Roy Rodgers*, University of British Columbia

Presiding: *Judith O. Hooper*, University of Wisconsin-Madison

3:30 p.m. to 5:00 p.m.

Session J  
Galleria 1

#### The Effects of Family Relationships on Personality and Its Development in the Adolescent and Young Adult Years

"Familial Contexts of Adolescent Development," *Stuart Hauser*, *Sally Powers*, *Joseph Schwartz*, *Alan Jacobson*, and *Gil Noam*, Harvard University

"Changing Family Relationships and Psychological Development During the Young Adult Years," *Kathleen M. White* and *Joseph C. Spiesman*, Boston University

"Family Influence on Well-Being from Late Adolescence to Early Adulthood," *Jeylan T. Mortimer* and *Jon Lorence*, University of Minnesota

Discussants: *Gary W. Peterson*, University of Tennessee, and *Lynda Henley Walters*, University of Georgia

Presiding: *Luther B. Otto*, Boys Town Center for the Study of Youth Development

Session K  
Galleria 2

#### Beyond the Limits of Logical-Positivism

"Toward a Critical Theory of the Family," *Beatrice Paolucci* and *Margaret M. Bubolz*, Michigan State University

Discussants: *Anton Jacobs*, University of Notre Dame, and *David A. Schulz*, University of Delaware

Presiding: *Marie Withers Osmond*, Florida State University

Session L  
Galleria 3

#### Issues in Analyzing Data on Marital Quality

"Sexual Tensions and Satisfaction as Dimensions of Marital Quality," *Vaughn R. A. Call*, Boys Town Center for the Study of Youth Development

"Ridge Regression as a Technique for Analyzing Models with Multicollinearity," *Jeannie Kidwell*, Texas Tech University, and *Lynne Brown*, Purdue University

Discussants: *Wesley R. Burr*, Brigham Young University, and *Robert Larzelere*, Western Conservative Baptist Seminary, Portland

Presiding: *Graham B. Spanier*, Pennsylvania State University

8:00 p.m. to 9:30 p.m.

Galleria 1

Theory and Methods Workshop Business Meeting

Presiding: *David Klein*, University of Notre Dame

# PRE-CONFERENCE WORKSHOPS CONTINUED

WEDNESDAY, OCTOBER 22, 1980

8:30 a.m. to 10:00 a.m.

Session M

Galleria 1

## THEORY CONSTRUCTION AND RESEARCH METHODOLOGY WORKSHOP CONTINUED

### Theorizing About Parenthood

"A Theoretical Model of Differential Parenting Inputs for Children with Special Needs," *Barbara H. Settles*, University of Delaware

Discussants: *Victor A. Christopherson*, University of Arizona, and *Anita Sue Kolman*, Augsburg College, Minneapolis

Session N

Galleria 2

### Order, Conflict, and Violence in the Family

"Family Conflict and Evolutionary Theory," *Jetse Sprey*, Case Western Reserve University

"A Developmental Approach to Family Violence: A Theoretical Integration," *Nancy Sederberg*, Valparaiso University

"Demystifying the Double Bind: Patterned Disorder in Domestic Violence," *Linda Harris and Murray Straus*, University of New Hampshire

Discussants: *David Fournier*, Oklahoma State University, and *Stephen Jorgensen*, University of Arizona

Presiding: *Keith Farrington*, Whitman College

Session O

Galleria 3

### Coordinating Work and Family Careers

"Work-Family Life Cycles," *Patricia Voydanoff*, Merrill-Palmer Institute

"The 'Life-Cycle Squeeze' Concept: An Appraisal," *Phyllis Moen*, Cornell University

Discussants: *John Scanzoni*, University of North Carolina-Greensboro, and *Irving Tallman*, Washington State University

Presiding: *Dianne Kieren*, University of Alberta

10:30 a.m. to 12:00 noon

Session P

Galleria 1

### Refinements and Applications of Family Role Transition Theory

"Building Developmental Theory: A Propositional Inventory About Stepfamily Transitions," *Craig L. Roberts*, Arizona State University

"A Theory of Ease of Role Transitions in the Acquisition of the Filial Role in Middle Age," *Helen Mederer*, University of Minnesota

Discussants: *Ann Jache*, University of Notre Dame, and *Candyce Russell*, Kansas State University

Presiding: *Geoffrey K. Leigh*, University of Iowa

Session Q

Galleria 2

### Practicum on the Travails of the Family Theorist

"Uncinate Processes in Large Scale Theory Integration," *Larry L. Constantine*, Tufts University

Discussants: *Bert N. Adams*, University of Wisconsin-Madison, and *Robert Ryder*, University of Connecticut

Presiding: *Reuben Hill*, University of Minnesota

# PRE-CONFERENCE WORKSHOPS CONTINUED

WEDNESDAY, OCTOBER 22, 1980

10:30 a.m. to 12:00 noon  
Session R  
Galleria 3

## THEORY CONSTRUCTION AND RESEARCH METHODOLOGY WORKSHOP CONTINUED

Theorizing About Post-Divorce Adjustment and Remarriage  
"Building Theory About Post-Divorce Adjustment," *Randal D. Day*, South Dakota State University,  
and *Helen J. Raschke*, Austin College, Texas  
"A Theory of Mate Selection Among Divorced Women," *Jean Atkinson*, Pennsylvania State University,  
and *Maximiliane Szinovacz*, Florida State University  
Discussants: *Gay C. Kitson*, Case Western Reserve University, and *Philip R. Kunz*, Brigham Young University  
Presiding: *J. Ross Eshleman*, Wayne State University

\*\*\*\*\*

9:00 a.m. to 12:00 noon  
Studio Suite

## REGULATION OF MARITAL AND FAMILY THERAPY: STRATEGIES FOR CERTIFICATION AND LICENSURE

Workshop leader: *William C. Nichols*, private practice, Birmingham, Michigan  
Resource persons: *Marcia Lasswell*, University of Southern California, *Charles Cole*, Iowa State University, *Veon Smith*, University of Utah, *Thomas Clarke*, Bowman Gray School of Medicine, and *Steven Alexander*, California Association for Marriage and Family Therapy, San Diego  
Presiding: *Charles Cole*, Iowa State University

(The workshop, co-sponsored by the Family Action and Family Therapy Sections, will be a working forum, with didactic presentations on the current status of licensing and certification of marital and family therapy throughout the U.S. William Nichols, the workshop leader, is president-elect of the AAMFT and a past president of the NCFR. Registration is open.)

\*\*\*\*\*

9:30 a.m. to 12:30 p.m.  
Council Suite

## THREE LEARNING DOMAINS INTEGRATED INTO SUCCESSFUL FAMILY LIFE EDUCATION

Workshop leaders: *Bunny Gow* and *Craig Fraser*, Calgary, Alberta, Public Schools  
Coordinator: *Barbara MacDougall*, Calgary Board of Education

(This workshop, sponsored by the Education Section, will allow participants to interact with the curriculum development process of an integrated K-12 Family Life Education Program in the Calgary Public Schools, where Family Life and Sex Education programs have been available since the early 1960s. In Calgary programs include communication skills, exercises to enhance self-concept and self-esteem, values and decision making, as well as human sexuality. Registration is open.)

\*\*\*\*\*

1:00 p.m. to 3:00 p.m.  
North Galleria

## FAMILY PROBLEMS AS SEEN IN CHILDREN'S BOOKS

Workshop leader: *Bernice Hunt*, Dandelion Press, and free-lance writing, Bedford, New York  
Presiding: *Marcia Lasswell*, University of Southern California

(This workshop, sponsored by the Family Therapy Section, will be devoted to a review and critique of current books for children dealing with family problems such as divorce, death, alcoholism, sibling rivalry. Books will be on display, and a bibliography will be available to each participant. Pre-registration is required. It is free to members of the Family Therapy Section; \$5.00 for all others. Check at the NCFR registration desk.)

\*\*\*\*\*

## POST-CONFERENCE WORKSHOP

SATURDAY, OCTOBER 25, 1980

1:00 p.m.  
South Galleria

### FAMILIES OF DIVORCE

Battling Parents and Victimized Children

Workshop leader: *Robert Menninger*, The Menninger Foundation, Topeka, Kansas  
Presiding: *Marcia Lasswell*, University of Southern California

(Dr. Menninger is concerned with educating parents to realize the stress divorce places on their children. Courts and judges send families to the Menninger Foundation before divorce occurs. He offers two-day workshops for the whole family, at which parents as well as children are encouraged to talk. He is also interested in the violence that may occur with divorce. This workshop will deal in particular with his methods for helping families handle their pain. The Family Therapy Section is sponsoring this special session. Pre-registration is required. Family Therapy Section members may attend without cost; for others the cost is \$10.00. Check at the NCFR Registration desk.)

## ONGOING EVENTS THROUGHOUT THE CONFERENCE

Ballroom Foyer

### ANNUAL MEETING REGISTRATION

Tuesday, 7:30 p.m. to 9:00 p.m.; Wednesday, 8:00 a.m. to 7:30 p.m.; Thursday, 8:00 a.m. to 2:00 p.m.; Friday, 8:00 a.m. to 4:00 p.m.; Saturday, 8:00 a.m. to 11:00 a.m.

Ballroom Foyer

### MESSAGE CENTER FOR CONFERENCE REGISTRANTS

There is a message center for all conference registrants in the registration area. Please use the special forms provided for writing notes.

Ballroom Foyer

### SNACK BAR AND LOUNGE

A snack bar and lounge is an innovation this year. Snack Bar hours: Tuesday, 10:00 a.m.—1:30 p.m.; Wednesday, 10:00 a.m.—1:30 p.m.; Thursday, 8:00 a.m.—2:30 p.m.; Friday, 8:00 a.m.—7:30 p.m.

Ballroom B

### ANNUAL MEETING TAPES

*Jerry Sienknecht*, Salt Productions, Meridian, Idaho, will be taping all major sessions: plenaries and Section meetings. Tapes will be available for sale immediately after each session and throughout the conference. The cost is \$4.00 each, or \$175.00 for tapes of the entire conference. The display is located in the book exhibit area.

Petite Suite

### NCFR EMPLOYMENT SERVICE

Wednesday, Thursday, and Friday, 8:00 a.m. to 5:00 p.m.; Message Center, Saturday, 8:00 a.m. to 11:00 a.m.

Co-Chairs: *Scott Lane*, University of Georgia, and *Betty Morrison*, NCFR

Room 307

### PRESS ROOM

Wednesday, 8:00 a.m. to 10:00 p.m.; Thursday, 8:00 a.m. to 1:30 p.m.; Friday, 8:00 a.m. to 6:00 p.m.; Saturday, 8:00 a.m. to 11:00 a.m.

Co-Chairs: *June Henton* and *Mary Cramer*, Oregon State University, and *Betty Morrison*, NCFR

# ONGOING EVENTS THROUGHOUT THE CONFERENCE CONTINUED

- Ballroom B** **COMBINED BOOK EXHIBIT**  
 Wednesday, 12:00 noon to 6:00 p.m.; Thursday and Friday, 8:30 a.m. to 5:30 p.m.  
 Chair: *Harve Horowitz*, Columbia, Maryland
- Forum Suite** **FILM, FILMSTRIP, AND VIDEO-TAPE EXHIBIT**  
 Wednesday, Thursday, and Friday, 8:00 a.m. to 6:00 p.m.  
 Co-Chairs: *Martha Calderwood*, C.M.D.N.J.—New Jersey Medical School, Newark, and *Deryck Calderwood*, New York University
- Directors' Suite** **STUDENT HEADQUARTERS**  
 Tuesday, 12:00 noon to 6:00 p.m.; Wednesday, Thursday, and Friday, 8:00 a.m. to 6:00 p.m.
- Room 416** **FOCUS GROUP HEADQUARTERS**  
**Law and the Family Focus Group:** Wednesday, 1:30 p.m. to 2:30 p.m.  
 Presiding: *Stephen Bahr*, Brigham Young University  
**Health and the Family Focus Group:** Wednesday, 2:30 p.m. to 3:30 p.m.  
 Presiding: *William J. Doherty*, University of Iowa Medical School  
**Middle-Age and Middlecence Focus Group:** Wednesday, 3:30 p.m. to 4:30 p.m.  
 Presiding: *Dean K. Hoffman*, Indian Health Service, U.S.P.H.S., Reno, Nevada, and *Rosalie Ackerman*, Iowa State University  
**Adoption Focus Group:** Wednesday, 4:30 p.m. to 5:30 p.m.  
 Presiding: *G. C. Sponaugle and Hamilton McCubbin*, University of Minnesota  
**Aging Focus Group:** Thursday, 12:00 noon to 1:30 p.m.  
 Presiding: *James DeBurger*, University of Louisville  
**Divorce and Divorce Reform Focus Group:** Thursday, 1:00 p.m. to 2:00 p.m.  
 Presiding: *Emily Brown*, Divorce and Marital Stress Clinic, Alexandria, Virginia  
**Single Parent Families Focus Group:** Friday, 8:00 a.m. to 9:00 a.m.  
 Presiding: *Joan Hess Russell*, Single Parents on Campus and Community, Boulder, Colorado  
**Marriage Enrichment Focus Group:** Friday, 9:00 a.m. to 10:00 a.m.  
 Presiding: *Anna L. Cole*, Marriage Counseling Associates, Ames, Iowa, and *David and Vera Mace*, A.C.M.E., Winston-Salem, North Carolina  
**Divorce and Divorce Reform Focus Group:** Friday, 12:00 noon to 1:00 p.m.  
 Presiding: *Helen Raschke*, Austin College, Texas

## NCFR COMMITTEE MEETINGS

**TUESDAY, OCTOBER 21, 1980**

1:00 p.m. to 2:00 p.m.  
 Room 406

### NCFR FINANCE COMMITTEE MEETING

Presiding: *Kate Garner*, Greensboro, North Carolina, NCFR President-Elect

2:00 p.m. to 6:00 p.m.  
 Room 406

### NCFR PUBLICATIONS COMMITTEE MEETING

Presiding: *William C. Nichols*, private practice, Birmingham, Michigan



## NCFR COMMITTEE MEETINGS CONTINUED

**TUESDAY, OCTOBER 21, 1980**

4:00 p.m. to 6:00 p.m.  
Studio Suite

**NCFR MEMBERSHIP COMMITTEE MEETING**  
Presiding: *Leland Axelson*, Virginia Tech

**WEDNESDAY, OCTOBER 22, 1980**

8:00 a.m. to 9:00 a.m.  
Room 406

**1981 NCFR NOMINATING COMMITTEE MEETING**

10:00 a.m. to 11:00 a.m.  
Directors' Suite

**NCFR STUDENT AND YOUNG PROFESSIONAL REPRESENTATIVES MEETING**  
Presiding: *Carolyn Love*, J. C. Penney Company, New York City

10:00 a.m. to 12:00 noon  
Parlor C

**JOURNAL OF MARRIAGE AND THE FAMILY EDITORS' MEETING**  
Presiding: *Felix M. Berardo*, University of Florida

10:00 a.m. to 12:00 noon  
Parlor D

**FAMILY RELATIONS EDITORS' MEETING**  
Presiding: *James Walters*, University of Georgia

10:00 a.m. to 12:00 noon  
Parlor E

**NCFR MONOGRAPH SERIES EDITORS' MEETING**  
Presiding: *John Scanzoni*, University of North Carolina-Greensboro

1:00 p.m. to 5:30 p.m.  
Council Suite

**1979-80 NCFR BOARD OF DIRECTORS MEETING (Past Presidents welcome)**  
Presiding: *Ira L. Reiss*, University of Minnesota, NCFR President

1:00 p.m. to 2:30 p.m.  
Studio Suite

**ROUND TABLE LEADERS ORIENTATION**  
Presiding: *Sharon Price-Bonham*, University of Georgia

5:30 p.m. to 6:30 p.m.  
Directors' Suite

**NCFR STUDENT AND YOUNG PROFESSIONAL REPRESENTATIVES MEETING**  
Presiding: *Carolyn Love*, J. C. Penney Company, New York City

**THURSDAY, OCTOBER 23, 1980**

7:00 a.m. to 9:30 a.m.  
Hilton Coffee House

**NCFR WHITE HOUSE CONFERENCE ON FAMILIES COMMITTEE MEETING**  
Presiding: *Sharon Alexander*, National Association of State Boards of Education, Washington, D.C.

7:30 a.m. to 8:30 a.m.  
Room 416

**JOURNAL OF FAMILY ISSUES EDITORS' MEETING**  
Presiding: *Graham Spanier*, Pennsylvania State University

**FRIDAY, OCTOBER 24, 1980**

7:00 a.m. to 8:30 a.m.  
Hilton Coffee House

**1981 NCFR ANNUAL MEETING PROGRAM COMMITTEE MEETING**  
Presiding: *Sharon Price-Bonham*, University of Georgia

5:30 p.m. to 8:00 p.m.  
Meet at NCFR Registration Desk

**NCFR PUBLIC POLICY COMMITTEE MEETING**  
Presiding: *Sharon Alexander*, National Association of State Boards of Education, Washington, D.C.

## NCFR COMMITTEE MEETINGS CONTINUED

**SATURDAY, OCTOBER 25, 1980**

7:00 a.m. to 8:30 a.m.  
Hilton Coffee House

**NCFR CONSTITUTION REVISION COMMITTEE**  
Presiding: *Helen Hartness*, Emeritus, Lewis and Clark College, Portland

1:00 p.m. to 3:00 p.m.  
North Galleria

**1980-81 NCFR BOARD OF DIRECTORS MEETING** (Past Presidents welcome)  
Presiding: *Kate Garner*, Greensboro, North Carolina, NCFR President-Elect

## NCFR AFFILIATED COUNCILS ACTIVITIES

**TUESDAY, OCTOBER 21, 1980**

6:30 p.m. to 9:30 p.m.  
Pavilion Room

**AFFILIATED COUNCILS FORUM AND DINNER**

Address: "The COFO Family Violence Project," *Wallace C. Fulton*, Equitable Life Assurance Society, New York City

Annual Business Meeting

Report of Nominating Committee, *Ronald Pitzer*, University of Minnesota

Appointment of Nominating Committee for 1980-81

Distinguished Service to Families and Commendation Awards Report, *Cecilia Gray*, California State University-Sacramento

Review of Roles of Regional Representatives, *Helen Hartness*, Emeritus, Lewis and Clark College  
Presiding: *Leo Hawkins*, North Carolina State University-Raleigh

**WEDNESDAY, OCTOBER 22, 1980**

8:00 a.m. to 10:00 a.m.  
Pavilion Room

**MEMBERSHIP WORKSHOP FOR AFFILIATED COUNCILS AND NCFR MEMBERSHIP COMMITTEE**

Workshop leaders: *Leland J. Axelson*, Virginia Tech, and *Donna Hodgkins-Berardo*, Florida Junior

## MISCELLANEOUS MEETINGS

**WEDNESDAY, OCTOBER 22, 1980**

12:00 noon to 1:00 p.m.  
Parlor D

**MARRIAGE STUDIES CONSORTIUM**

**THURSDAY, OCTOBER 23, 1980**

1:00 p.m. to 2:00 p.m.  
Parlor C.

**DIRECTORS OF FAMILY CENTERS MEETING**  
Presiding: *Richard J. Calligan*, University of Akron

# 1979-80 NCFR BOARD OF DIRECTORS

President .....	<i>Ira L. Reiss</i> , University of Minnesota
President-Elect .....	<i>Kate B. Garner</i> , Greensboro, North Carolina
Annual Meeting Program Vice President .....	<i>Wesley R. Burr</i> , Brigham Young University
Membership Vice President .....	<i>Leland J. Axelson</i> , Virginia Tech
Publications Vice President .....	<i>William C. Nichols</i> , Private Practice, Birmingham, Michigan
Past President .....	<i>Paul C. Click</i> , U. S. Bureau of the Census
Secretary .....	<i>Susan S. Meyers</i> , University of Minnesota
Treasurer .....	<i>Richard N. Hey</i> , University of Minnesota
Section Chairs:	
Education .....	<i>George P. Rowe</i> , University of Nebraska-Lincoln
Family Action .....	<i>Charles Lee Cole</i> , Iowa State University
Family Therapy .....	<i>Marcia W. Lasswell</i> , University of Southern California
International .....	<i>Jan E. Trost</i> , Uppsala University, Sweden
Research and Theory .....	<i>Pauline G. Boss</i> , University of Wisconsin-Madison
Editors:	
<i>Journal of Marriage and the Family</i> .....	<i>Felix M. Berardo</i> , University of Florida
<i>Family Relations</i> .....	<i>James Walters</i> , University of Georgia
<i>Journal of Family History</i> .....	<i>Tamara Hareven</i> , Clark University
<i>Monograph Series</i> .....	<i>John Scanzoni</i> , University of North Carolina-Greensboro
Affiliated Councils Chair .....	<i>Leo Hawkins</i> , North Carolina State University, Raleigh
Affiliated Councils Chair-Elect .....	<i>Betty Barber</i> , Eastern Michigan University
Minorities Representative .....	<i>David A. Baptiste</i> , New Mexico State University
Members at Large:	
.....	<i>Greer Litton Fox</i> , Wayne State University
.....	<i>William Marshall</i> , University of Wisconsin-Madison
.....	<i>Ruth H. Jewson</i>
.....	<i>Steven Engelberg</i>
Executive Officer .....	
Washington Representative .....	
Student and Young Professional Representatives:	
.....	<i>Carolyn Love</i> , J. C. Penney Company, New York City
.....	<i>Stephen Elliott</i> , Bowman Gray School of Medicine
.....	<i>Nancy Ann Bueche</i> , University of North Carolina-Greensboro
.....	<i>Jeri Hepworth</i> , University of Connecticut
.....	

# 1980-81 NCFR BOARD OF DIRECTORS

President . . . . .	<i>Kate B. Garner</i> , Greensboro, North Carolina
President-Elect . . . . .	<i>Wesley R. Burr</i> , Brigham Young University
Annual Meeting Program Vice President. . . . .	<i>Sharon Price-Bonham</i> , University of Georgia
Membership Vice President . . . . .	<i>Barbara E. James</i> , University of North Carolina-Chapel Hill
Publications Vice President . . . . .	To be announced
Past President . . . . .	<i>Ira L. Reiss</i> , University of Minnesota
Secretary . . . . .	<i>Susan S. Meyers</i> , University of Minnesota
Treasurer . . . . .	To be announced
Section Chairs:	
Education . . . . .	<i>Margaret E. Arcus</i> , University of British Columbia
Family Action . . . . .	<i>Charles Lee Cole</i> , Iowa State University
Family Therapy . . . . .	<i>Frederick Duhl</i> , Boston Family Institute
International . . . . .	<i>Jan E. Trost</i> , Uppsala University, Sweden
Research and Theory . . . . .	<i>Pauline G. Boss</i> , University of Wisconsin-Madison
Minorities . . . . .	<i>Harriette McAdoo</i> , Howard University, Washington, D.C.
Editors:	
<i>Journal of Marriage and the Family</i> . . . . .	<i>Felix M. Berardo</i> , University of Florida
<i>Family Relations</i> . . . . .	<i>James Walters</i> , University of Georgia
<i>Journal of Family History</i> . . . . .	<i>Tamara Hareven</i> , Clark University
<i>Monograph Series</i> . . . . .	<i>John Scanzoni</i> , University of North Carolina-Greensboro
Affiliated Councils Chair. . . . .	<i>Betty Barber</i> , Eastern Michigan University
Affiliated Councils Chair-Elect. . . . .	To be announced
Member at Large. . . . .	<i>Greer Litton Fox</i> , Wayne State University
Executive Officer . . . . .	<i>Ruth H. Jewson</i>
Washington Representative . . . . .	<i>Steven Engelberg</i>
Student and Young Professional Representatives:	
. . . . .	<i>Nancy Ann Bueche</i> , University of North Carolina-Greensboro
. . . . .	<i>Jeri Hepworth</i> , University of Connecticut
. . . . .	<i>Diane Logan</i> , University of Georgia

## REGIONAL REPRESENTATIVES

Region I (Connecticut, Maine, Massachusetts, New Hampshire, Rhode Island, Vermont) . . . . .	<i>Russell Smart</i> , Emeritus, University of Rhode Island
Region II (New York, New Jersey, Puerto Rico, Virgin Islands) . . . . .	<i>Irene Von Cseh</i> , Herbert Lehman College, C.U.N.Y.
Region III (Delaware, Maryland, Pennsylvania, Virginia, Washington, D.C., West Virginia) . . . . .	<i>Ned Gaylin</i> , University of Maryland
Region IV (Alabama, Florida, Georgia, Kentucky, Mississippi, North Carolina, South Carolina, Tennessee) . . . . .	<i>Michael Sporakowski</i> , Virginia Tech
Region V (Indiana, Illinois, Michigan, Minnesota, Ohio, Wisconsin) . . . . .	<i>Sander Latts</i> , University of Minnesota
Region VI (Arkansas, Louisiana, New Mexico, Oklahoma, Texas) . . . . .	<i>Carl Andersen</i> , Texas Tech University
Region VII (Iowa, Kansas, Missouri, Nebraska, North Dakota, South Dakota) . . . . .	<i>Candyce Russell</i> , Kansas State University
Region VIII (Colorado, Montana, Utah, Wyoming) . . . . .	<i>J. Richard Connelly</i> , University of Utah
Region IX (Arizona, California, Hawaii, Nevada, Wake Island, Guam) . . . . .	<i>Thomas Frankum</i> , Henry Gunn High School, California
Region X (Alaska, Idaho, Oregon, Washington) . . . . .	<i>Helen Thun Hartness</i> , Emeritus, Lewis and Clark College, Portland
Region XI (Canada) . . . . .	<i>Maryanne Doherty</i> , University of Alberta

## STATE, REGIONAL, AND LOCAL COUNCIL CHAIRS

Alabama—*Mary Lou Purcell*  
 Alberta, Canada—*Norah Keating*  
 Arizona—*Jack Martin*  
 British Columbia, Canada—  
     *Thomas Abernathy*  
 California—*Nona Cannon*  
 Connecticut—*Leslie Strong*  
 District of Columbia—*Ned Gaylin*  
 Florida—*Catherine Duncan*  
 Georgia—*Donald Bower*  
 Hawaii—*James Allen*  
 Idaho—*Carol Harvey*  
 Illinois—*Sterling Alam*  
 Indiana—*Howard Kauffman*  
 Iowa—*Rosalie Ackerman*  
 Kentucky—*Donna L. Jordan*  
 Louisiana—*Zoe Ann Sparks*  
 Maine—*Walter McIntire*  
 Maryland—*Alice Kjer*  
 Massachusetts—*M. Lawrence Rawlings*  
 Michigan—*Margaret Bubolz*  
 Minnesota—*Linda Budd*

Mississippi—*Frances McGuffee*  
 Missouri—*John Howell*  
 Montana—*William J. Taylor*  
 Nebraska—*K. F. King*  
 Nevada—*Dean K. Hoffman*  
 New Jersey—*Rose Ford*  
 New Mexico—*Kathleen Eastman*  
 New York—*Norma Newmark*  
 North Carolina—*Edward Markowski*  
 Ohio—*Sara Derrick*  
 Oregon—*Peter Vennewitz*  
 Pennsylvania—*Nathan W. Turner*  
 Rhode Island—*Russell C. Smart*  
 South Carolina—*Ingram Parmley*  
 South Dakota—*Orlando Coering*  
 Tennessee—*William Balch*  
 Texas—*Nelwyn B. Moore*  
 Utah—*J. Craig Peery*  
 Virginia—*Susan Molumphy*  
 Washington—*Peggy Willis*  
 Wisconsin—*Charles Adam*  
 Rocky Mountain—*Joseph Turner*

Southeastern—*Michael Sporakowski*  
 Tri-State—*M. Patricia Duffy*  
 Arizona:  
     Maricopa County—*Theron Weldy*  
     Greater Tucson—*Frank R. Williams*  
 Southern Counties, California—  
     *James Heidecke*  
 North Carolina:  
     Charlotte—*Mary Martin*  
     Choanoke Area—*James Felton*  
     Greater Greensboro—  
         *Claudette Burroughs*  
     Greater High Point—*Shirley Cromwell*  
     Salisbury-Rowan—*Betty Sell*  
     Watauga County—*Joyce Stine*  
 Student Councils:  
     University of Wisconsin-Stout—  
         *Joyce Mulcahy*  
     Montclair State College—  
         *Karen Bergmann and Frances*  
         *Bognatz*

## NATIONAL COUNCIL ON FAMILY RELATIONS HEADQUARTERS STAFF

*Ruth Adams*  
*Margaret Bodley*  
*James Haugen*

*Susan Havelak*  
*Loree Hood*  
*Betty Morrison*

*Sarah Pavlik*  
*Carol Schwartzau*  
*Cynthia Winter*

# INDEX TO PROGRAM PARTICIPANTS

Abernathy, Thomas, 9,14,31  
 Ackerman, Norleen M., 15  
 Ackerman, Rosalie, 9,26,31  
 Adam, Charles, 31  
 Adams, Bert, 23  
 Ahrons, Constance R., 17  
 Alam, Sterling, 31  
 Aldous, Joan, 6,18,22  
 Alexander, Sharon, 4,27  
 Alexander, Steven, 24  
 Allen, James, 31  
 Allen, Walter R., 15  
 Altergott, Karen, 21  
 Ames, Sheila, 17  
 Ammons, Paul, 2,9  
 Andersen, Carl, 31  
 Anderson, James, 7  
 Anderson-Khleif, Susan, 18  
 Apclonio, Franklin, 13  
 Arcus, Margaret E., 9,14,30  
 Atkinson, Jean, 24  
 Avery, Arthur W., 9,10  
 Axelson, Leland J., 27,28,29  
  
 Badir, Doris, 13  
 Bagarozzi, Dennis A., 4  
 Bahr, Stephen, 12,26  
 Baker, Lisa Carol, 19  
 Balch, William, 31  
 Banwart, Albert, 15  
 Baptiste, David, 6,7,16,29  
 Barber, Betty, 29,30  
 Barber, Clifton E., 12  
 Barlow, Brent, 13  
 Beam, Walter, 11  
 Bell, Nancy, 7  
 Bell, Robert W., 7  
 Bellis, Charles, 19  
 Berardo, Donna Hodgkins, 28  
 Berardo, Felix, 6,27,29,30  
 Bergman, Karen, 31  
 Berrett, Richard, 18  
 Bodine, George E., 7  
 Bognatz, Frances, 31  
 Boss, Pauline, 11,13,14,15,21,29,  
 30,a  
 Bowen, Gary Lee, 12  
 Bowen, Sheila, 5  
 Bower, Donald, 31  
 Boyd, Sherry T., 17,a  
 Bozett, Frederick, 4  
 Brock, Gregory, 4  
 Broderick, Carlfred B., 3,22  
 Brody, Gene, 7  
 Bronfenbrenner, Urie, 16

Brook, Zel, 4  
 Brooks, Harvey, 5  
 Brown, Emily M., 17,26  
 Brown, Lynne, 22  
 Brown, Richard, 19  
 Brownwright, Marjorie, 9  
 Brubaker, Timothy, 12  
 Bruce, John, 1,a  
 Bubolz, Margaret, 8,22,31  
 Budd, Linda, 31  
 Bueche, Nancy Ann, 11,29,30,a  
 Burgess-Kohn, Jane, 13  
 Burr, Wesley A., 3,22,29,30,a  
 Burroughs, Claudette, 31

Calderwood, Deryck, 26,a  
 Calderwood, Martha, 26,a  
 Calhoun, John A., 3  
 Call, Vaughn, 7,22  
 Cameron, Paul, 3  
 Cannon, Nona, 31  
 Cardea, Jane, 20  
 Carlson, Elwood, 5  
 Carson, Barbara, 3  
 Cate, Rodney M., 15,a  
 Catts-Levy, Sandra, 14  
 Cauble, Betsy, 6  
 Cavaghan, Peggy J., 7  
 Cazenave, Noel, 15  
 Chambers, Ann, 7  
 Chandler, Barbara, 19,20  
 Chilman, Catherine, 17  
 Choate, Maren, 10  
 Christopherson, Victor A., 23  
 Clarke, Thomas, 24  
 Clark, Vicki, 19  
 Cleminshaw, Helen K., 18  
 Cochran, Moncrieff, 16  
 Cohen, Joyce, 12  
 Cohen, Stanley N., 18  
 Cole, Anna, 11,26  
 Cole, Charles L., 4,11,14,17,21,24,  
 29,30,a  
 Comeau, Joan, 6  
 Conger, Rand, 18  
 Connelly, J. Richard, 31  
 Constantine, Larry, 23  
 Coombs, Robert H., 14  
 Cooper, Catherine R., 5  
 Cooper, Dannis D., 2  
 Cornille, Thomas A., 21  
 Coufal, Jeanette, 4  
 Cramer, Mary W., 3,25,a  
 Croan, Gerald, 19

Cromwell, Shirley, 31  
 Cronen, Vernon E., 21  
 Crosby, John, 13  
 Culler, Carol, 2  
 Cunningham, Jo Lynn, 2

Daly, Ronald, 4  
 Darling, Carol, 3,18  
 Davidson, Bernard, 2,18  
 Davis, Elizabeth Socha, 3,20  
 Davis, Shari Lynn, 3,a  
 Day, Randal D., 1,15,24  
 De Burger, James, 12,26  
 De Frain, John, 3  
 Derrick, Sara, 31  
 Dill, Diana, 6  
 Dill, Jane R., 7  
 Dilworth-Anderson, Peggye, 2  
 Dixon, Roger A., 22  
 Doherty, William J., 21,26,31  
 Donohue, Kevin, 19  
 Dosser, David, 2,18  
 Draughn, Peggy, 9  
 Drechsler, David P., 7  
 Duffy, M. Patricia, 31  
 Duhl, Bunny S., 18  
 Duhl, Frederick, 18,30  
 Dumon, Wilfried A., 5,14,18,19  
 Duncan, Catherine, 31

Earl, Lynn, 2  
 Eastman, Kathleen, 31  
 Eckman, Ted, 14  
 Elder, Glen, 13,22  
 Elliott, Stephen, 16,29,a  
 Ellis, Godfrey, 5,7  
 Engelberg, Steven, 29,30  
 English, Richard, 15  
 Erskine, Rita, 19  
 Eshleman, J. Ross, 1,2,24

Fake, Candace, 8,23,a  
 Famighetti, Robert, 7  
 Farrington, Keith, 23  
 Feld, Ellen, 6  
 Felton, James, 31  
 Figley, Charles, 14  
 Filsinger, Erik, 18,21  
 Fischer, Judith L., 5,20  
 Fischer, Lucy Rose, 5  
 Fisher, C. Daniel, 13  
 Fitzelle, George, 11  
 Fitzpatrick, Mary A., 21  
 Flake-Hobson, Carol, 8  
 Flynn, Diane K., 17

Folberg, Jay, 12  
 Ford, Rose, 31  
 Fournier, David, 10,23  
 Fowler, C. Ray, 14  
 Fox, Greer Litton, 6,29,30  
 Frankel, Ephraim A., 14,21  
 Frankum, Thomas, 31  
 Fraser, Craig, 24  
 Freedman, Deborah, 15  
 Fulton, Wallace C., 28

Galligan, Richard J., 5,22,28  
 Garner, Kate B., 16,26,28,29,30,a  
 Gaylin, Ned, 31  
 Gdowski, Charles, 6  
 Gecas, Viktor, 5,22  
 Gelles, Richard J., 1,21  
 Giles-Sims, Jean, 19  
 Glamser, Francis D., 17  
 Glick, Paul C., 6,29  
 Goebel, Karen, 15  
 Goering, Orlando, 31  
 Goetting, Ann, 14  
 Goettsch, Stephen, 17  
 Gottman, John, 18  
 Gow, Bunny, 24  
 Gray, Cecilia D., 9,11,28  
 Green, Robert, 12  
 Greenwood, Nancy A., 5  
 Grotevant, Harold, 5  
 Grundstrom, Virginia Frei, 10  
 Guernsey, Dennis, 21  
 Gullotta, Thomas P., 19  
 Gunn, Barbara, 7

Haas, Linda L., 10  
 Hagestad, Gunhild, 22  
 Hampton, Robert L., 19  
 Hansen, Gary L., 4  
 Hareven, Tamara, 29,30  
 Harris, Linda, 23  
 Hartness, Helen Thun, 7,8,16,28,31,a  
 Harvey, Carol, 31  
 Harvey, Les V., 7  
 Hatkoff, Terry Smith, 12  
 Hauser, Stuart, 22  
 Hawkins, Leo, 28,29,a  
 Haynes-Clements, Lynda A., 9  
 Hegi, Debra, 18  
 Heidecke, James, 31  
 Hennon, Charles B., 10,14,17  
 Henton, June, 3,15,25,a  
 Hepworth, Jeri, 29,30,a  
 Herold, Edward S., 18  
 Hey, Richard N., 6,9,29



# INDEX TO PROGRAM PARTICIPANTS CONTINUED

Hicks, Mary, 3  
Higbie, Imogene, 14  
Hildreth, Gladys J., 8  
Hill, Reuben, 6,23  
Hirschman, Charles, 5  
Hochhauser, Mark, 6  
Hoffman, Dean K., 11,26,31  
Holm, Richard, 18  
Holman, Thomas B., 2,12,18  
Hood, Jane, 4  
Hooper, Judith O., 3,22  
Horowitz, Harve, 26,a  
Houseknecht, Sharon K., 4,17  
Howell, John, 31  
Hudson, John W., 14  
Hughes, Christy, 2  
Hultaker, Orian E., 14,21  
Hunsicker, David, 20  
Hunt, Bernice, 24  
Murh, Won Moo, 10  
Huston, Ted L., 16  
Hutchison, Ira W., 9

Ihinger-Tallman, Marilyn, 10,20  
Ingoldsby, Bron, 8,10  
Ingraham, William F., 20

Jache, Ann, 23  
Jackson, Jacquelyne Johnson, 1  
Jacobs, Anton, 22  
Jacobson, Alan, 22  
James, Barbara, 1,30  
Jeffrey, Barbara, 13  
Jenson, Glen, 10  
Jeter, Kris, 2  
Jewson, Ruth H., 3,29,30  
Joanning, Harvey, 4  
Johnson, Katrina, 21  
Johnson, Kenneth M., 21  
Johnson, Leonor, 15  
Johnson, Michael P., 16,20  
Johnson, Nancy E., 15  
Jones, Randy, 15  
Jordan, Donna L., 31  
Jorgensen, Stephen, 10,17,23

Kauffman, Howard, 31  
Keating, Norah, 17,31  
Keim, Robert Eugene, 11  
Keith, Joanne, 3,9  
Keith, Pat, 9  
Kenkel, William F., 1,14  
Kerckhoff, Richard K., 2,8  
Kidwell, Jeannie S., 5,22  
Kieren, Dianne K., 13,23  
Killeen, Maureen, 8

Kim, Kwang Chung, 10  
King, K. F., 31  
Kirkendall, Lester, 4  
Kitson, Gay C., 24  
Kjer, Alice, 31  
Kleber, Jean E., 22  
Klein, David M., 20,22,a  
Klein, Rona, 18  
Koblinsky, Sally A., 3  
Kolman, Anita Sue, 8,23  
Koval, James, 19  
Kunz, Philip R., 24

Lamb, Michael, 13  
Lamberts, Martha, a  
Lamke, Leanne, 9  
Landrum, Cecile, 19  
Lane, T. Scott, 13,25,a  
Lannamann, John, 21  
Larson, Jeffry, 5,7  
Larson, Lyle E., 21  
Larue, Gerald, 13  
Larzelere, Robert, 3,22  
Lasswell, Marcia, 7,10,14,24,25,  
29,a

Lasswell, Thomas, 24  
Latts, Sander, 7,31  
Laurence, Martin, 10  
Lee, Gary R., 5,21  
Leginsky, Pat, 17  
Leigh, Geoffrey, 23  
Leslie, Leigh, 16  
Lewis, Robert, 18  
Ligowski, Jane, 13  
Lingren, Herbert G., 8  
Lloyd, Sally, 15  
Logan, Diane, 15,30  
Lohman, Mark, 12  
Lorence, Jon, 22  
Love, Carolyn, 16,27,29,a  
Lowman, Joseph C., 6  
Luckey, Eleanore, 1  
Lupri, Eugen, 10

MacDougall, Barbara, 24  
Mace, David R., 11,26  
Mace, Vera, 11,26  
Macke, Anne, 4  
Mark, Philip, 18  
Markowski, Edward, 31  
Marshall, William, 29  
Martin, Dorothy H., 7  
Martin, Jack, 31  
Martin, Mary, 31  
Martinson, Floyd M., 10

Mason, Marilyn, 12  
Massey, Grace, 6  
McAdoo, Harriette P., 15,30  
McCord, Joan, 5  
McCubbin, Hamilton, 6,12,14,20,  
26  
McCumber, Arlinda, 7  
McDonald, Gerald W., 1,20  
McEntire, Betty, 8  
McGuffee, Frances, 31  
McIntire, Walter, 31  
Mederer, Helen J., 23  
Menninger, Robert, 25  
Meyers, Susan S., 29,30  
Milardo, Robert, 16  
Miller, Brent C., 5,15,21  
Miller, Sandra W., 2  
Mills, David, 10  
Moen, Phyllis, 23  
Moffit, Robert, 19  
Molumphy, Susan, 31  
Moore, Nelwyn, 9,31  
Morgan, Anita, 10  
Morris, Kenneth, 21  
Morris, Patsy, 8  
Morrison, Betty, 25  
Mortimer, Jeylan, 22  
Moss, J. Joel, 9  
Mulcahy, Joyce, 31  
Munro, Brenda, 10,13  
Munro, Gordon, 10,13  
Murillo-Rohde, Ildaura, 4  
Murstein, Bernard, 1,4

Napier, Augustus, 11  
Needle, Richard, 6  
Nelson, Josie, 9  
Neubeck, Gerhard, 1,11  
Nevin, Robert, 6  
Newmark, Norma, 2,31  
Nice, D. Stephen, 12  
Nichols, William C., 24,26,29  
Nicola, Jo-Ann, 15  
Noam, Gil, 22  
Nobles, Wade W., 15  
Norem, Rosalie, 10  
Norton, Arthur J., 1

O'Keefe, Ann, 12  
Olson, David H., 21  
Olson, Terrance, 13  
Orthner, Dennis, 12,19,20  
Osmond, Marie Withers, 1,20,22  
Otto, Luther B., 22  
Oyer, Jane, 12

Palmeter, Jill Ginsburg, 3  
Paolucci, Beatrice, 22  
Parmley, Ingram, 31  
Pasley, Kay, 10  
Patterson, Joan, 6,12  
Pearce, W. Barnett, 21  
Peery, J. Craig, 31  
Peery, Johnette, 11  
Peters, Marie, 6,17  
Peterson, Gary W., 5,22  
Phelan, Gladys K., 9  
Pitzer, Ronald, 4,28  
Powell, Gleam S., 8  
Powers, Sally, 22  
Powers-Alexander, Susan, 3  
Price-Bonham, Sharon, 21,27,30,a  
Pulliam-Krager, Janice, 12  
Purcell, Mary Lou, 1,6,31  
Purrrington, Beverly, 16

Rallings, E. M., a  
Randall, Susan, 8  
Raschke, Helen, 1,24,26  
Rawlings, M. Lawrence, 31  
Reaves, Joe R., 7  
Reiss, Ira L., 3,16,27,29,30,a  
Rettig, Kathryn, 8,21  
Rice, Robert, 20  
Rich, Robert O., 2  
Richmond-Abbott, Marie, 15  
Ridley, Carl, 10  
Riley, Pamela Johnson, 15  
Rindfuss, Ronald R., 5  
Roberts, Craig L., 8,23  
Roberts, Marsha, 20,a  
Robinson, Bryan, 8  
Rodgers, Roy, 22  
Rollins, Boyd C., 5  
Rose, Vicki, 8  
Rowe, George P., 16,29,a  
Russell, Candyece, 4,23,31  
Russell, Joan Hess, 26  
Ryder, Robert, 23

Safilios-Rothschild, Constantina, 14  
Safran, Daniel, 10  
Scanlon, John, 23,27,29,30  
Schacke, John, 8  
Schaefer, Robert B., 8,9  
Schlessinger, Laura C., 18  
Schmall, Vicki, 8,17  
Schrader, Sandra, 14  
Schulz, David A., 22  
Schvaneveldt, Jay, 1  
Schwartz, Joseph, 22  
Schwitters, Sylvia Y., 1

# INDEX TO PROGRAM PARTICIPANTS CONTINUED

Scoresby, Lynn, 13  
 Sederberg, Nancy, 23  
 Seelbach, Wayne C., 12  
 Sell, Betty, 31  
 Sell, Kenneth D., 1,4  
 Settles, Barbara, 2,23  
 Shipman, Gordon, 8  
 Sienknecht, Jerry, 25,a  
 Simmons, Roberta G., 15  
 Simpson, Alice, 7  
 Simpson, Jacqueline, 2  
 Skeen, Patsy, 8  
 Skidmore, C. Jay, 2  
 Smart, Russell, 31  
 Smith, Jeanne, 9  
 Smith, Veon, 24  
 Snyder, Douglas K., 6  
 Solle, Donna L., 15,17,20  
 Southerly, William, 20  
 Spanier, Graham B., 1,22,27  
 Sparks, Zoe Ann, 31  
 Spelsman, Joseph C., 22  
 Spencer, Marietta, 2  
 Sponaugle, G. C., 26  
 Sporakowski, Michael, 7,31  
 Sprengle, Douglas, 14  
 Sprey, Jetse, 3,23  
 Spykerman, Bryan, 15  
 Stafford, Anita F., 17  
 Staples, Robert, 15  
 Stephenson, Gordon, 13  
 Stevens, Scott, 19  
 Stine, Joyce, 31  
 Stoneman, Zolinda, 7  
 Storm, Cheryl, 14  
 Straatman, Marcelle, 9  
 Straus, Murray, 2,13,15,20,23  
 Strong, John, 11  
 Strong, Leslie, 31  
 Sudia, Cecelia E., 2  
 Surra, Catherine A., 16  
 Sussman, Marvin B., 2  
 Sytsma, Leonard, 2  
 Szinovacz, Maximillane, 10,15,21,24  
  
 Tager, Mark J., 11  
 Tallman, Irving, 10,23  
 Taylor, William J., 31  
 Thomas, Darwin, 22  
 Thornton, Arland, 15  
 Trainer, Joseph, 11  
 Trost, Jan, 13,14,18,21,29,30,a  
 Turner, Joseph, 31  
 Turner, Nathan W., 31

Van Meter, Mary Jane, 8  
 Veevers, Jean, 14  
 Vennewitz, Peter, 8,31,a  
 Ventura, Jacqueline, 19  
 Viljoen, Sylvia, 10  
 Von Cseh, Irene, 31  
 Voss, Jacqueline, 2  
 Voydanoff, Patricia, 4,23  
  
 Waldie, Jerome, 12  
 Walters, James, 7,27,29,30  
 Walters, Lynda Henley, 7,22  
 Wampler, Karen Smith, 8  
 Warrell, Commery, a  
 Well, Mildred, 10  
 Wels, David L., 15  
 Weiss, Robert L., 18  
 Weiss, Robert S., 18  
 Welch, Charles, 8  
 Weldy, Theron, 31  
 White, James M., 21  
 White, Kathleen M., 22  
 Wilfong, Edward, 4  
 Wilhelm, Marl, 3  
 Williams, Arthur R., 12  
 Williams, Frank R., 31  
 Williams, John, 12  
 Willis, Peggy, 4,31  
 Wiseman, Jacqueline, 6  
 Wodarski, John, 2,9  
  
 Yancy, Emma, 7  
 Yang, Raymond K., 2,8  
 Yllo, Kersti, 15  
 Yorgason, Brent, 2  
  
 Zuengler, Kaye L., 9

## VISIT THE NCFR BOOK EXHIBIT

An exhibition of books, periodicals and literature about films and services related to the study of Family Relations will be located in Ballroom B. A lounge and refreshment area will be available in Parlor F immediately adjacent to the exhibits. The Exhibits will be open Wednesday, Noon to 6:00 p.m., Thursday and Friday, 8:30 a.m. to 5:30 p.m. Book orders will be accepted on a convention discount basis in accord with individual publisher's policies. The Directory of Exhibitors cited below is a partial listing, reflecting those participants reserving space in advance of this program announcement.

Abingdon Press  
Addiction Research Foundation  
Allyn & Bacon, Inc.  
American Trust Publications  
Association for Humanistic Psychology  
Auburn House Publishing Company  
Ballantine/Vintage Books  
Beacon Press  
Brunner/Mazel, Inc.  
Child Defense Fund  
Child Welfare League  
Maxi Cohen/First Run Features  
E. P. Dutton

Family Service Association of America  
Good Samaritan Hospital  
Halsted Press  
Harper & Row  
D.C. Heath & Company  
Herald Press  
Human Sciences Press  
Ideals  
International Library  
Interpersonal Communication Programs  
Kendall/Hunt Publishing Company  
Longman, Inc.  
Mobius Productions

Oxford University Press  
Pilgrimage, Inc.  
Princeton Book Company  
Sage Publications  
Charles C. Thomas, Publishers  
University of Chicago Press  
University of Minnesota Press  
Van Nostrand Publishers  
Wadsworth Publishing Company  
Westminster Press  
Westview Press  
John Wiley & Sons  
Worth Publishers

### Late additions

The Department of Health & Human Services, Human Development Services  
E. P. Dutton Company  
Family Resources Institute  
Greenwood Press

The H.R.A.F. Press  
Johns Hopkins University Press  
Kenkoh Sandals  
Motion, Inc.  
National Organization for an American Revolution

Nelson Hall, Inc.  
Parents Without Partners, Inc.  
University of Chicago Press, Journals  
University Press of America

## VISIT THE NCFR FILM/FILMSTRIP/VIDEOTAPE EXHIBIT

All films, filmstrips and videotapes will be shown in the Forum Suite, Wednesday, Thursday, and Friday, from 8:00 a.m. to 6:00 p.m. A schedule will be posted near the door each day. The awards from the 1980 Film/Filmstrip/Videotape Competition will be indicated on the schedule. Films, filmstrips and videotapes are listed below with the name of the producer or distributor.

- |   |   |  |
|---|---|--|
| ABC Wide World of Learning, Inc.<br><i>Born Drunk: Fetal Alcohol Syndrome</i> - 20/20 (10 minutes)<br><i>Why Do I Feel This Way?</i> (48 minutes) VT                | Fanlight Productions<br><i>Trying Times: Crisis in Fertility</i> (33 minutes)   | Learning Corporation of America<br><i>Is That What You Want for Yourself?</i> (13 minutes)<br><i>A Rainy Day</i> (35 minutes)<br><i>Whose Child Is This?</i> (28 minutes)  |
| Adelphi University Center on Aging<br><i>Rose By Any Other Name</i> (15 minutes)  | Filmakers Library<br><i>David</i> (28 minutes)  | Martha Stuart Communications, Inc.<br><i>Are You Listening/Children of Working Mothers</i> (29 minutes) VT<br><i>Are You Listening/Widows</i> (29 minutes) VT  |
| Anti-Defamation League of B'nai B'rith<br><i>American Story: The Gromada Family</i> (22 minutes)<br><i>American Story: The Spanakos Family</i> (22 minutes)         | First-Run Features<br><i>Joe and Mari</i> (78 minutes)  | Memphis Planned Parenthood<br><i>Adrienne's Man</i> (5 minutes)<br><i>Boys Don't Do That</i> (6 minutes)<br><i>Friends of Carl</i> (5 minutes)<br><i>Wayne's Decision</i> (6 minutes)<br><i>What's To Understand</i> (4 minutes) |
| Barr Films<br><i>Child Abuse: The People Next Door</i> (20 minutes)<br><i>Not My Problem</i> (18 minutes)   | Focus International, Inc.<br><i>After the Game</i> (19 minutes)<br><i>Female Masturbation</i> (6 minutes)<br><i>Responding</i> (6 minutes)  | Mobius International<br><i>Taking Chances - Teen Sexuality and Birth Control</i> (22 minutes)  |
| Benchmark Films, Inc.<br><i>Sami Herders</i> (28 minutes)   | Franciscan Communications<br><i>Family in Focus</i> (7 minutes)<br><i>This Time Forward</i> (12½ minutes)<br><i>Time for Us</i> (16 minutes)  | Motion, Inc.<br><i>Breastfeeding: A Special Closeness</i> (23 minutes)   |
| Billy Budd Films<br><i>Hospice - An Alternative Way to Care for the Dying</i> (26 minutes)  | Gerald T. Rogers Productions, Inc.<br><i>Why Is It Always Me?</i> (14½ minutes)   | Multi Media Resource Center<br><i>Five Women, Five Births: A Film About Choices</i> (29 minutes)   |
| Brigham Young University, Media Marketing<br><i>The Drop Card</i> (14 minutes)<br><i>The Emmett Smith Story</i> (24 minutes)<br><i>The Trophy Case</i> (24 minutes) | Good Samaritan Hospital and Medical Center<br><i>Changing Home Behaviors: A Program for Parents</i> (60 minutes) VT<br>Hospice Institute for Education, Training and Research, Inc.<br><i>As Long As There Is Life</i> (40 minutes) | National AudioVisual Center<br><i>And We Were Sad, Remember</i> (30 minutes)   |
| Butterick Publishing<br><i>Child Abuse and Neglect</i> (12 minutes) FS  | Human Relations Media<br><i>The Addictive Personality: Who Uses Drugs and Why?</i> (26 minutes) FS<br><i>Depression: Recognizing It, Treating It</i> (41 minutes) FS  | New Day Films<br><i>Am I Normal?</i> (23 minutes)  |
| Carousel Films<br><i>Teenage Homosexuality</i> (11 minutes)   | <i>Eight Stages of Human Life: Prenatal to Late Childhood . . . Adolescence to Old Age</i> (115 minutes) FS   | Parents of Adult Schizophrenics of San Diego County<br><i>Welcome Home - Maybe</i> (30 minutes) VT   |
| Cavalcade Productions, Inc.<br><i>Child Abuse: Police Intervention</i> (27½ minutes)  | Jamil Simon Productions<br><i>Smiley</i> (20 minutes)   | Paulist Productions<br><i>A Family of Winners</i> (28 minutes)<br><i>Princess</i> (28 minutes)   |
| Centron Films<br><i>It's Up to Laurie</i> (21 minutes)<br><i>Not Only Strangers</i> (23 minutes)<br><i>U-D-Play it Safe</i> (14 minutes)                            | Janus Films, Incorporated<br><i>The Legacy: Children of Holocaust Survivors</i> (23 minutes)  | Perennial Education, Inc.<br><i>Seasons of Sexuality</i> (14 minutes)<br><i>Special Time for Parents and Children</i> (15 minutes)   |
| Churchill Films<br><i>Rosey Grier: The Courage To Be Me</i> (23 minutes)  | KUTV, Inc./Documentary<br><i>The Plan</i> (54 minutes)  |  |
| E.C. Brown Foundation<br><i>How To Be A Good Kid</i> (24 minutes)   |   |  |

Pyramid Films  
*Board and Care* (27 minutes)  
S-L Film Productions  
*Shatter the Silence* (29 minutes)  
Sunburst Communications, Inc.  
*Alcohol and Teenagers: Why? Why Not?* (36 minutes) FS  
*His Baby Too: Problems of Teenage Pregnancy* (38 minutes) FS  
*Surviving Your Parents' Divorce: A Teenager's Guide* (27 minutes) FS

United Documentary Films  
*Between Men* (57 minutes)  
University of Wisconsin - Extension  
*Birth Place* (47 minutes)

Victoria Films  
*Pals* (15 minutes)  
Barton Cox Junior Films  
*Youth Sports: Is Winning Everything?* (28½ minutes)

## COMING!

January 1981

NCFR's New National Family Resource Information Clearinghouse

### FAMILY RESOURCE & REFERRAL CENTER (FR&RC)\*

#### What Can FR&RC Do For You?

Save valuable time and keep you current on any number of family-related topics by machine searching the online FR&RC information file. You can access the file by (1) contacting the Reference Dept. of your local university or state libraries; (2) contact FR&RC for custom searches.

#### What Is Included In FR&RC's Information File?

Bibliographic data related to the family from the last decade, 1970-current, with historic or useful but dated information included. Data sources include the following formats: journal articles from over 800 journals (INVENTORY OF MARRIAGE AND FAMILY LITERATURE included); books and monographs; instructional materials, i.e., curricula, guides, audiovisuals; government documents; organizations; newsletters; programs; reports; research centers and other major databases used for referrals. Many of the citations are annotated, are coded by subject, and are classified by type and reader audience. Updated regularly. Number of holdings: approx. 35,000 records.

#### What Makes FR&RC Different?

(1) This is the first attempt to gather in one information file, a comprehensive collection of bibliographic data representing the family field. (2) FR&RC has identified hundreds of referral sources which are keyed to act as guides to a comprehensive listing of contact sources and bibliographic data.

#### How Much Does This Service Cost?

Not much when compared to time-consuming manual searching without the aid of subject specialists. Contact your local library for search fees. For custom search fees, contact FR&RC.

**TARGET AUDIENCES INCLUDE:** Family life educators; educational and professional organizations; students; libraries; research centers; human service organizations; counselors; the clergy; and the news media.

\*This service made possible by a grant from the Charles Stewart Mott Foundation

## The NATIONAL COUNCIL ON FAMILY RELATIONS

Announces Two Special Issues

A Decade of Family Research and Action — The Seventies, *Journal of Marriage and the Family*, November 1980. Authors and tentative titles are:

Family Theory, *Wesley Burr*  
Sex Roles, *John Scanzoni*  
Premarital Sexual Behavior, *Ira Reiss*  
Mate Selection, *Bernard I. Murstein*  
Teen-Age Parenting, *Catherine Chilman*  
Family Power, *Gerald McDonald*  
Parent-Child Relationships, *James and Lynda Walters*  
Marital Satisfaction, *Graham Spanier and Robert Lewis*  
Family Stress and Coping, *Hamilton I. McCubbin*  
Violence and the Family, *Richard Gelles*  
Variant Marital and Family Structures, *Eleanor D. Macklin*  
Kinship, *Gary Lee*  
Aging and the Family, *Gordon F. Streib*  
Divorce, Desertion and Remarriage, *Sharon Price-Bonham*  
Family Therapy, *David Olson*  
Cross-National Research and the Family, *Marie Osmond*  
The NCFR: Decade of the Seventies, *Ruth Jewson*

Stress and the Family, *Family Relations*, October 1980. Articles and authors include the following:

Rape: A Family Crisis, *Priscilla White and Judith C. Rollins*  
Coping as Divorced Single Parents: A Comparative Study of Fathers and Mothers, *John Defrain and Rod Eirick*  
Normal Stresses During the Transition to Parenthood, *Brent Miller and Donna Sollie*  
The 'Home Treatment': The First Steps to Trying to Cope With an Alcoholic Husband, *Jacqueline Wiseman*  
Application of a Bicultural Assessment Framework to Social Work Practice With Latinos, *Joan Velasquez and Cesar Velasquez*  
Family Life and the Police Profession Coping Patterns Wives Employ in Managing Job Stress and the Family Environment, *Peter Maynard, Nancy Maynard, Hamilton McCubbin and D. Shao*  
Stress Absorbing Systems in Black Families, *Harriette McAdoo*

Write:

National Council on Family Relations  
1219 University Avenue Southeast  
Minneapolis, Minnesota 55414

\$6.50 each



# THE NATION'S FAMILIES: 1960-1990

George Masnick, Harvard University

Mary Jo Bane, Harvard University

*One of a series of projects sponsored by the Joint  
Center for Urban Studies of MIT and Harvard University.*

This important book identifies current population, household, and lifestyle trends and interprets the implications of these trends for future policy planning and institutional accommodation. The authors set aside several misconceptions about recently observed changes in the American family and suggest changes in store over the next decade. Among the factors of family life measured and projected are principal householders' marital status, household structure, women's participation in the labor force, contributions to household income, personal relationships, and lifestyles. Special attention is given to trends and differentials in the behavior of birth cohorts of individuals as they age over the life course. The text is highlighted by over 50 graphs and tables.

Paperback edition, May, 1980      197pp.      8½" x 11"

ISBN 0-86569-051-0      \$10.00

Casebound edition, October, 1980      ca. 200pp.      6½" x 9¼"

ISBN 0-86569-050-2      \$17.95

The paperback edition is available for purchase only and is on display at the cooperative book exhibit. Examination copies of the casebound edition are available at 50% off suggested list price. Payment will be refunded upon evidence of multi-copy purchase of either edition for class use.



Address orders to  
**Auburn House Publishing Company**  
131 Clarendon Street  
Boston, Massachusetts 02116  
Telephone 617-247-2650

**NEW BOOKS**  
from  
**INTERNATIONAL LIBRARY**

---

**UNMARRIED  
COHABITATION**

**Jan Trost**  
206 pp. \$ 12.50, 1979

Jan Trost (chairperson of the  
International Section of NCFR)  
knows all about marriage and  
cohabitation i Danmark, France  
Sweden, USA etc.

---

**THE FAMILY  
IN CHANGE**

**Ed. by Jan Trost**  
app. 250 pp. \$ 15.—, fall 1980

Chapters by Pauline Boss,  
Harold Christensen, Hamilton  
McCubbin, John Mogey, Ira  
Reiss, Murray Strauss, Irving  
Tallman, Jacquelin Wiseman etc.

---

**International Library  
Stallhagsgatan 7  
S-724 60 Västerås  
Sweden**

# Joe and Maxi

A FILM BY MAXI COHEN AND JOEL GOLD

A LIFE AFFIRMING FILM ABOUT  
FAMILY RELATIONSHIPS, CHILD PARENT SEPARATION AND  
COPING WITH DEATH AND DYING

"Touching, engrossing, brave and courageous" —Jeffrey Lyons (NYC, NJ) Radio

BLUE RIBBON WINNER — AMERICAN FILM FESTIVAL

For bookings and press sales contact:

First-Run Features

419 Park Avenue South, New York City 10016  
(212) 685-6262 J

## "TAKING CHANCES"



Teen Sexuality and Birth Control

22 minutes — 16mm — color

Presenting

A valuable new teaching tool already  
in use across America

WINNER — NCFR AWARDS 1980  
BEST PRODUCTION  
SEXUALITY & SEX EDUCATION

For purchase or rental, contact:

MOBIUS INTERNATIONAL,  
P.O. Box 315,  
Franklin Lakes, N.J.,  
07417 (201) 891-8240



## American Trust Publications

10900 West Washington St.  
Indianapolis, IN 46231

Given the great scarcity of unbiased Islamic literature in the West, the American Trust Publications seeks to remedy the situation by publishing standard books on Islamic themes by responsible Muslims and non-Muslim scholars.

### **The Bible, The Qur'an and Science**

By Maurice Bucaille — 253 pages  
hardcover, paperback

An objective analysis of the Bible and the Quran which shows how the scientific assertions in the two books measure up to accepted and proven theories of modern science. Deals also with the origins and preservation of the two books through history. HB \$11.95 PB 7.95

### **On The Political System of The Islamic State**

By Mohamed S. El-Awa — 144  
pages paperback

Well researched in terms of the Qur'an and Hadith, the book contains illuminating sections on the place of shura in the system and the meaning of accountability of the Head of State of Muslim citizens.  
\$3.75

### **Islam and Alcoholism**

By Dr. M. B. Badre — 68 pages  
paperback

Describes the Islamic methodology for curing alcoholism. Gives the actual historic facts and relates them to modern therapies on alcoholism.  
\$1.95

### **Family Structure in Islam**

By Hammudah Abdal-Ati — 360  
pages hardcover

A fully researched work on the Islamic family. It deals with all aspects of the Islamic family system in depth and historical perspective. Chapters on marriage, rights and duties of spouses and of parents and children, on forms of divorce, and inheritance and succession.  
\$10.95

### **AMSS Outlines of Islamic Economics,** 143 pages, Tables, charts.

Proceedings of the First Symposium on the Economics of Islam in North America. Theoretical issues of Islamic Economics and problems of economic policy in Muslim countries critically examined.  
\$5.00

### **Studies in Early Hadith Literature**

By Mohamed Mustafa Azami — 342  
+ 164 pages paperback

An illuminating and thoroughly researched work in the discovery, verification and evaluation of smaller collections of traditions ante-dating the Six Principals. Explodes misleading conclusions about hadith including those of orientalist. \$8.25

### **Studies in Hadith, Methodology and Literature**

By Mohamed Mustafa Azami — 122  
pages hardcover and paperback

The book contains chapters dealing with the meaning of the term hadith, its authority, its learning and diffusion, its process of gathering, recording and compilation, and much more. HB \$6.00 PB 4.50

### **AMSS, Proceedings — First Symposium on Islam and Psychology, 1977**

63 pages — tables, diagrams and references. Islamic insights on mental health issues affecting society. A pioneering effort of six muslims to interpret selected issues of a social change in terms of Islamic values with bearing on psychology.  
\$2.95

## **ISLAMIC BOOK SERVICE**

10900 West Washington St. Indianapolis  
INDIANA 46231

Tel: (317) 839-7669 — (317) 839-9278

For Order and information  
write or call to:



