

National Council on Family Relations

report

Volume 35 Number 1

March 1990

The family...where the future touches now.'

Conferences address work, privacy issues

Two conferences this recently with some of the same issues -- work/family and women, lifestyle and privacy.

The first conference, sponsored by the Federation of Organizations of Professional Women, concerned the "Mommy Track," the name given to the concepts described by Felice Schwartz in Harvard Business Review. As you know, unlike men who are considered committed if they are married and have children, women who marry and choose to have children are denied promotion or even hiring and are thought to be less committed to the job.

The continuity of higher pay for men, more scrutiny of women's activities and less chance of promotion are all part of women's professional experience. The latest hazard for women is to be quizzed not only on their children, but also their mother. Welcome the "Daughter Track!" Even though lifestyle and maternal status cannot legally be asked, privacy is being denied by subterfuge, such as discovering a woman has children if she takes the family plan for medical benefits.

The Review Essay by Linda Thompson and Alexis Walker in the November 1989, issue of *The Journal of Marriage and the Family* addresses the beliefs and actions of women and men in marriage in regard to paid work and family work. This excellent article has a telling sentence which reflects the attitudes of the men and women studied. "Most women 'help' men with provision, and many men 'help' women with family work and parenting, although partners collude to sustain belief that men are primary providers but parenting is shared." (p 864)

Employers may agree women only

'help' with provision, which means they are not serious, but would they agree that parenting is shared? Family caregiving is perceived as women's responsibility, and this makes women less reliable.

The second conference was sponsored by the National Consumer League on the topic of privacy. The new technology not only allows intensive monitoring of performance, but also allows the creation of networks of information about the things we buy, the health services we use, our finances, and the organizations we belong to, all of which indicate our lifestyles. Even though much of this information is incorrect, it is passed along to other networks and becomes extremely difficult to correct.

From these conferences it became clear that issues of family and lifestyles, reproductive rights, and credit are the main focus of the privacy issue and of women's and sometimes men's, opportunities in the work force.

The provision of health benefits, maternity, and family leave is indeed a major cost to employers. If the primary value is the bottom line and the costs of benefits are to be born by the company alone, then it is not surprising that companies are unwilling to hire women who they perceive as those with the responsibility for the children and older people.

The ultimate solution to part of this dilemma is to have a national health plan which removes the loss to the company if it provides health care, including maternity. By March, 1990, the Pepper Commission is to formulate a plan for a long term care system, but the group is being heavily lobbied to turn their

recommendations into a plan for a national system of health care.

Such a system may improve opportunities for women, and perhaps older people, but I wonder if anyone has seen research from Canada, for instance, to document whether indeed there is a change in attitude of employers?

More than this, it seems to me it is imperative that our society comes to the realization that we need all the human resources possible, and that it is the total community's responsibility to see that children are reared healthfully, and older people are cared for in their later years.

NCFR members quoted in Newsweek

"The 21st Century Family," the Winter/Spring 1990 special edition of *Newsweek* magazine, featured a number of NCFR members and journal subscribers.

Actually, the Washington, D.C., bureau of *Newsweek* has been a subscriber to *Journal of Marriage and the Family* for a number of years.

Among the other NCFR members or subscribers featured in the issue are: Larry Bumpass (page 16); Dr. John Demos (page 17); Sheila Kamerman (page 20); John and Emily Visser (page 27); Patricia Papernow (page 30); Elizabeth Einstein (page 34); Andrew Cherlin (page 34); Paul Glick (page 39); David Popenow (page 54); Glen Elder (page 57); Maris Vinovskis (page 60); and Jay Belsky (page 89).

But we also need to release the creativity of all our in-betweens, the workers and parents, whose lives are stunted by intensive monitoring and restrictions on privacy. Is a person less capable as a worker if she/he is in an unconventional partnership arrangement? The balance between individual rights of privacy and needs of the employer to know in order to provide benign benefits is elusive, but necessary for us to consider.

This is the American problem. Unlike the people of the Eastern block countries who are trying to get out of governmental "Big Brotherism," we are also trying to avoid corporate intrusion and control, at the same time we try to get governmental help for the social needs we require.

What new structures or attitudes do we need to make it possible for more companies to address the bottom line as well as family and individual privacy rights? How can the bottom line be enhanced by investment in human capital and democracy?

Margaret Feldman

NCFR Washington Representative

Candidates' vitas for 1990 elections begin on page 15

Contributions received from 33 members

Thirty-three persons contributed gifts to NCFR from November 1 through December 31, 1989. Their generosity enables NCFR to continue its programs and projects.

Contributions may be made to specific funds or to a non-restricted account. All gifts are tax deductible as allowed by law. For more information on how YOU can support NCFR, contact Mary Jo Czaplowski, NCFR executive director, 3989 Central Ave. N.E., Suite 550, Minneapolis, MN 55421, or call her at 612-781-9331.

Thank you to these contributors:

Richard Kerckhoff, Sarasota, FL;
Barbara Germino, Chapel Hill, NC;

James DeBurger, Jeffersonville, IN;
Hyman Rodman, Greensboro, NC;
Tae Kyun Kim, Seoul, S. Korea;
Ronald Maynard, Kasota, MN;
Robert L. James, West Hill, Ont., Canada; and Margaret Bubolz, E. Lansing, MI; all non-restricted account donations.

Robert Kelley, Claremont, CA; Family Discipline Kelley Award.

Beth Kuehn, Gilbert, PA; Peggy Quinn, Lewiston, NY; Patricia J. Thompson, Bronx, NY; Loretta Young Silvia, Winston-Salem, NC; Debra L. Berke, Newark, DE; William S. Aquilino, Madison, WI; Sally S. Martin, Reno, NV; Colleen Murray, Reno, NV; Elizabeth J. Bergen, Madison, WI;

Constance Shehan, Gainesville, FL; Jay Teachman, University Park, MO; Harriette McAadoo, Washington, DC; Elaine A. Anderson, Takoma Park, MD; Alexis J. Walker, Salem, OR; Donna L. Sollie, Auburn, AL; Shelley MacDermid, W. Lafayette, IN; Vicki Loyer-Carlson, Morgantown, WV; Linda Tiedje, Lansing, MI; Leigh A. Leslie, Silver Spring, MD; Shirley M. Huck, Ames, IA; Maureen Perry-Jenkins, Urbana, IL; Carolyn Woodhouse, E. Stroudsburg, PA; Edith A. Lewis, Ann Arbor, MI; and Katherine Allen, Blacksburg, VA; all donating to the Feminism and Family Studies Small Grants Award fund.

Non-Profit Organization
U.S. Postage
PAID
Cambridge, MN 55008
Permit No. 30

NCFR
3989 Central Ave. N.E.
Suite #550
Minneapolis, MN 55421
TIME DATED MATERIAL
Please Deliver by
April 1, 1990

Colleagues encouraged to promote NCFR



M. Janice Hogan
1989-90 NCFR
President

Dear Colleagues:

It is exciting to be one of your elected leaders and involved with the upward spiral of events. I want to share with you the news of program submissions for the annual conference theme, "Children and

Their Families," the latest journals, and an update on strategic planning.

I am impressed with the rate of participation in planning for our annual conference. A record number of submissions for programs are reported (588), led by the Family and Health and Research and Theory Sections. Cindy Winter, NCFR conference coordinator, indicates that all Sections have a pool of abstracts from which selections will be made. The Section chairs will work with annual conference vice-president Jay Schvaneveldt to make final selections for the November, 1990, meeting. We thank all of you who submitted an abstract for your leadership in the production of new knowledge and your willingness to give us a chance to feature you on the program.

Which articles in the last issue of *Family Relations* and *Journal of Marriage and the Family* did you find most helpful? In my own work, the articles on gender roles were of immediate interest. Please let your non-member colleagues know about useful research, theory, and application that you read in the journals. They may not know that these journals are published by NCFR and are membership benefits. In effect, when we sell the benefits of NCFR, we are telling

others about the best interdisciplinary organization for family professionals.

We are indebted to the editors, Alan Booth (JMF) and Tim Brubaker (FR), for their volunteer service and leadership. They are proud of the journals and would welcome wider promotion by all of us. The future of NCFR as a premier organization for family professionals is receiving special attention by your Board of Directors this year. We are identifying the strengths such as the interdisciplinary family journals, the annual conference participation rate, the growth potential, a permanent headquarters and professional staff, the inter-member relations and the opportunities to be a better resource center

for family professionals. Unfortunately, over the years we have committed NCFR to more projects and have more ideas for new initiatives than we have revenue sources. The Strategic Planning Committee is examining different scenarios with balanced budgets. President-elect Lynda Walters chairs the committee and will present the plan to the Board of Directors when we meet in April.

I hope you enjoy reading this newsletter. Perhaps you will want to pass it on to a colleague who might join NCFR. Your assistance in promoting NCFR is valuable.

M. Janice Hogan
NCFR President, 1989-90

Two long-time members die

Dean
Dr. Dwight G. Dean, a member of NCFR for 38 years, died December 5, 1989, in his home in Ames, IA, at the age of 70 of cancer. He was born in Crooksville, OH, December 9, 1918. He received his training as a sociologist at Northwestern University (M.A., 1947) and OH State University (Ph.D., 1956), specializing in marriage and family and social psychology.

He was professor of sociology at IA State University from 1968 to 1988. Prior to that he held faculty appointments at Denison University, Capital University and OH State University. At IA State he served as major professor for 25 masters and doctoral students. Among his former students are several family sociologists who have made contributions to NCFR and the field. Two of his former students are past recipients of the NCFR Outstanding Student Award: Graham Spanier and Charles Cole.

Dwight Dean was a creative teacher researcher whose love of knowledge and scientific inquiry influenced both his

students and colleagues. He was the author of four books and more than thirty journal articles. Perhaps his best known contributions were in the areas of alienation, marital adjustment, and emotional maturity.

He was a highly respected member of numerous sociological associations, holding many leadership positions (e.g., a fellow in the American Sociological Association, a past president of the North Central Sociological Association, member of editorial board and publications committee of the Midwest Sociological Association) throughout his career.

Mason

Dr. William C. Mason, Jr., of Emory, VA, died February 17, 1990, at the age of 64. He was the chaplain at Emory and Henry College.

He had been a member of NCFR for more than 35 years.

No other information was available at press time.

Changing families topic of annual symposium

Families are changing in ways that affect many aspects of our society. Understanding these changes and learning how to cope with their effects will be the focus of a series of annual two-day symposia beginning in the summer of 1991.

A Woods Charitable Fund award of \$36,000 over a two-year period will help bring the country's leading family researchers to the University of Nebraska-Lincoln campus to participate in the symposia. Each symposium will also include experts in applying research findings to the solution of family problems.

The symposia are intended for program administrators, planners, research scholars, and graduate students as well as educators, legislators, and journalists.

Professor of Sociology Alan Booth, who will direct the symposia, said that although the first year's topic has not yet been decided, issues to be considered include single parent families, teen pregnancy, family support for the elderly, declining family income, divorce and remarriage, and child care. Because each symposium will also be an integral part of a three-week summer course, graduate students from around the country can

attend and obtain course credit for the specialized training they receive at Nebraska.

NCFR's Board of Directors approved co-sponsorship at its April, 1989, Board meeting in New Orleans. "Co-sponsorship gives us the opportunity to help plan this important event and at the same time gives us wider exposure as an organization without significant financial obligations," said Mary Jo Czaplewski, NCFR executive director.

A committee of NCFR members will be appointed to help plan the first symposium. Other members of the committee will be from the co-sponsoring University of NE Department of Human Development and the Family, Psychology's Center for the Study of Law and the Child, and the Sociology Department.

Papers sought for meeting on gender, family

Papers are needed for the International Conference on Gender and the Family to be held February 6, 7, and 8, 1991, at Brigham Young University in Provo, UT.

The Women's Research Institute and the Center for Studies of the Family at Brigham Young are jointly sponsoring the conference.

Proposals up to one page in length must be received by August 1, 1990. They may be for original research, position papers, or conference sessions (several papers with chair submitting the proposal).

Conference participants will be notified by October 31, 1990. Issues relating to any area of gender and the family are appropriate for research or position papers and for conference sessions.

Please send proposals to Dr. Barbara Vance, Women's Research Institute, 945 SWKT, Brigham Young University, Provo, UT 84602; 801-378-3338.

REPORT of The National Council on Family Relations

Executive Director
Editor
Typesetting and
Printing

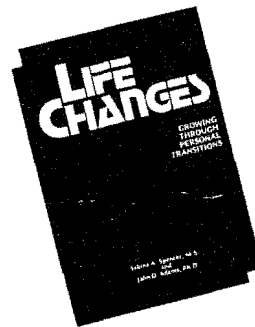
Mary Jo Czaplewski
Kathy Collins Royce
Sunshine Graphics
Cambridge, MN

NCFR Report is published quarterly by the National Council on Family Relations, 3989 Central Ave. N.E., Suite 550, Minneapolis, MN 55421. Third-class postage permit.

Subscription rate is \$5, included in annual membership dues. \$12.00 per year postpaid individual rate.

NEWS DEADLINES: February 1 for March issue; May 1 for June issue; August 1 for September issue; November 1 for December issue.

New Client Resources



LIFE CHANGES: Growing Through Personal Transitions

Sabina A. Spencer, M.S. and
John D. Adams, Ph.D.

Here's valuable help for clients experiencing a divorce or separation, death of a loved one, relocation, major job change, retirement, or any other significant life transition.

LIFE CHANGES identifies and explains the seven predictable stages we all go through during a major life change: *Losing focus; Denial; Questioning; Letting go; Testing new limits; Searching for meaning; Integrating.* Spencer and Adams are internationally-recognized organization consultants and workshop leaders.

\$8.95 paperback April, 1990

REBUILDING: When Your Relationship Ends — Audio Version

Bruce Fisher, Ed.D.

More than 300,000 copies of Bruce Fisher's book, **REBUILDING: When Your Relationship Ends**, have provided support and nurturance for people recovering from the ending of a love relationship. Now Fisher discusses his "divorce process rebuilding blocks" on audiotape, using the same 15-step model, with the added bonus of Bruce's warm and reassuring voice.

\$9.95 April, 1990



Ask your local bookseller, or order direct: add \$2.25 shipping for first book, .25 for each additional book; CA residents add 6 1/4 %.

WRITE FOR OUR FREE CATALOG!

Impact Publishers
Post Office Box 1094
San Luis Obispo, California 93406

State coordinator program started



Dawn Cassidy
Certification Director

Did you know that there are over 515 Certified Family Life Educators in 46 states, Canada, Taiwan, New Zealand, Australia, France and Puerto Rico? The

Papers sought for articles on Hill's work

A special issue of *Journal of Early Adolescence*, will feature "Theoretical and Empirical Papers Dedicated to the Work of John P. Hill."

The late John Hill was past president of the Society for Research on Adolescence and contributed to the field of adolescence as a teacher, researcher and theoretician.

All scholars, including Dr. Hill's past students, who have been influenced by his work are asked to submit theoretical or empirical manuscripts in the area of social development and family relations during adolescence. Especially welcome will be work relating to parenting issues and attachment and autonomy during the second decade of life. Particularly relevant topics include the effects of biological maturation on social relations.

Papers relating to policy considerations (in the area of adolescence) or manuscripts that take into account Dr. Hill's recommendations in the 1983 paper, "Early Adolescence: A Research Agenda," (*Journal of Early Adolescence*, 3, 1-21) would also be appropriate.

Papers submitted or invited for the special issue must be received by May 1, 1990. Editors will be Grayson N. Holmbeck and Dale A. Blyth, in accordance with the Instructions to Authors in the *Journal of Early Adolescence*.

Manuscripts should not exceed 30 pages, typed, double-spaced, including tables, figures, and references, and must conform to the guidelines in the *Publication Manual of the American Psychological Association* (3rd Edition).

Please state in a cover letter how the manuscript is influenced by Dr. Hill's work.

Send five copies to Grayson N. Holmbeck, Loyola University of Chicago, Dept. of Psychology, 6525 N. Sheridan Rd., Chicago, IL 60626; 312-508-2967.

most highly represented areas are Texas (49), Ohio (36), California (30), Pennsylvania (30) and Canada (27).

I will soon be contacting NCFR State Affiliate chairs and members to enlist their help in spreading the word about the CFLE program. I'll also be looking for information on licensing requirements for

Papers sought on teaching about families

Family Relations will feature a special collection of papers on "Innovative Ways and Controversial Issues in Teaching About Families." It will include articles on new methodology in teaching about families in early childhood programs; elementary school, high school, undergraduate and graduate education; adult and community education; and articles that address the uniqueness of family studies pedagogy and the challenge of teaching about families.

The collection might include issues like teaching small versus large classes, teaching across disciplines or from a multidisciplinary or multicultural perspective, feminist pedagogy, family life education in diverse settings, or the challenge of teaching about families as part of a liberal education curriculum or in a department where family courses are not taught traditionally.

Manuscripts need to be grounded in literature, and preference will be given to manuscripts demonstrating empirical support.

Manuscripts should be no longer than 20 pages, double-spaced, and follow American Psychological Association style. All manuscripts will be reviewed anonymously. Manuscripts must be postmarked by March 1, 1991.

Send manuscripts to: Margaret Crosbie-Burnett, Dept. of Counseling Psychology, 321 Education Bldg., 1000 Bascom Mall, University of WI, Madison WI 53706, 608-262-0461; or Katherine Allen, Dept. of Family and Child Development, 104 Wallace Annex, VA Tech, Blacksburg, VA 24061-0416; 703-231-6526.

family life educators in each state.

When the Certification Review Committee members met in New Orleans last November, they discussed the idea of marketing the CFLE program on a state-by-state basis. The CFLE State Coordinators program evolved from this discussion.

The program will work as follows: Each state, or in some cases region, will have a "State Coordinator." On a regular basis, the state coordinator will receive a listing of family life educators in their state or region who have ordered the CFLE Application Packet. The Coordinator will be responsible for calling these potential

CFLEs to see if they have any questions regarding the application process. This call will be a reminder to the applicant of the application deadline and will allow them to speak with someone personally about any questions or concerns they might have.

Directory of Certified Family Life Educators

A directory of Certified Family Life Educators will soon be issued to all CFLEs. It will provide them with a way to contact other family life educators in their area and around the world.

Don't forget: The deadline for the next CFLE Review is April 30! Call me if you have any questions or need an application.

Dawn Cassidy
Director

Welcome new CFLEs!



Congratulations to the following Family Life Educators who were certified as part of the November, 1989, CFLE review:

Ruth F. Charlesworth
Director of Family Life
Vermont Catholic Charities

Philip A. Coyle, Ed. D.
Minister of Family Life & Counseling
Manley Baptist Church

Betty Lou Hartlein
Interpersonal Relations Consultant
Creative Christian Seminars

Thomas Peter Ipes, Jr., D. Min.
Clinical Director
The Christian Counseling & Educational Center

David L. Johnson, Ed. D.
Associate Professor of Psychology
Raymond Walters College

Forrest C. Mobley, Jr.
Director
Lake Martin Episcopal Retreat

Conee P. Nelson
Senior Program Associate
Parents Anonymous of Delaware

Cynthia A. Power
President
Life Enrichment Services, Inc.

Clarence Walker, Ph.D.
Marriage & Family Therapist
Clarence Walker Ministries

Elizabeth S. Wietholter
Developmental Therapist
Kairos Counseling Center

Raiford Woods III
Director
New Life Family Health Ministry

Jill Carlson Zimmerman, M.S.
Director
Turning Point

Family Life Education Framework



This colorful 24" by 36" wall poster describes family life education by specifying major content and learning concepts for family life education programs over the life span.

IDEAL FOR:

- curriculum design
- program development
- continuing education
- classroom instruction
- career development
- program assessment

TOPIC AREAS:

1. Family Interaction
2. Interpersonal Relationships
3. Human Development and Sexuality
4. Education About Parenthood
5. Family Resources Management
6. Ethics
7. Family and Society

\$7 each (includes 1st class postage & handling)

Contact:

National Council on Family Relations
3989 Central Avenue N.E., Suite 550
Minneapolis, MN 55421
(612) 781-9331 • FAX (612) 781-9348

Colleagues encouraged to promote NCFR



M. Janice Hogan
1989-90 NCFR
President

Dear Colleagues:

It is exciting to be one of your elected leaders and involved with the upward spiral of events. I want to share with you the news of program submissions for the annual conference theme, "Children and

Their Families," the latest journals, and an update on strategic planning.

I am impressed with the rate of participation in planning for our annual conference. A record number of submissions for programs are reported (588), led by the Family and Health and Research and Theory Sections. Cindy Winter, NCFR conference coordinator, indicates that all Sections have a pool of abstracts from which selections will be made. The Section chairs will work with annual conference vice-president Jay Schvaneveldt to make final selections for the November, 1990, meeting. We thank all of you who submitted an abstract for your leadership in the production of new knowledge and your willingness to give us a chance to feature you on the program.

Which articles in the last issue of *Family Relations* and *Journal of Marriage and the Family* did you find most helpful? In my own work, the articles on gender roles were of immediate interest. Please let your non-member colleagues know about useful research, theory, and application that you read in the journals. They may not know that these journals are published by NCFR and are membership benefits. In effect, when we sell the benefits of NCFR, we are telling

others about the best interdisciplinary organization for family professionals.

We are indebted to the editors, Alan Booth (JMF) and Tim Brubaker (FR), for their volunteer service and leadership. They are proud of the journals and would welcome wider promotion by all of us. The future of NCFR as a premier organization for family professionals is receiving special attention by your Board of Directors this year. We are identifying the strengths such as the interdisciplinary family journals, the annual conference participation rate, the growth potential, a permanent headquarters and professional staff, the inter-member relations and the opportunities to be a better resource center

for family professionals. Unfortunately, over the years we have committed NCFR to more projects and have more ideas for new initiatives than we have revenue sources. The Strategic Planning Committee is examining different scenarios with balanced budgets. President-elect Lynda Walters chairs the committee and will present the plan to the Board of Directors when we meet in April.

I hope you enjoy reading this newsletter. Perhaps you will want to pass it on to a colleague who might join NCFR. Your assistance in promoting NCFR is valuable.

M. Janice Hogan
NCFR President, 1989-90

Two long-time members die

Dr. Dwight G. Dean, a member of NCFR for 38 years, died December 5, 1989, in his home in Ames, IA, at the age of 70 of cancer. He was born in Crooksville, OH, December 9, 1918. He received his training as a sociologist at Northwestern University (M.A., 1947) and OH State University (Ph.D., 1956), specializing in marriage and family and social psychology.

He was professor of sociology at IA State University from 1968 to 1988. Prior to that he held faculty appointments at Denison University, Capital University and OH State University. At IA State he served as major professor for 25 masters and doctoral students. Among his former students are several family sociologists who have made contributions to NCFR and the field. Two of his former students are past recipients of the NCFR Outstanding Student Award: Graham Spanier and Charles Cole.

Dwight Dean was a creative teacher researcher whose love of knowledge and scientific inquiry influenced both his

students and colleagues. He was the author of four books and more than thirty journal articles. Perhaps his best known contributions were in the areas of alienation, marital adjustment, and emotional maturity.

He was a highly respected member of numerous sociological associations, holding many leadership positions (e.g., a fellow in the American Sociological Association, a past president of the North Central Sociological Association, member of editorial board and publications committee of the Midwest Sociological Association) throughout his career.

Mason

Dr. William C. Mason, Jr., of Emory, VA, died February 17, 1990, at the age of 64. He was the chaplain at Emory and Henry College.

He had been a member of NCFR for more than 35 years.

No other information was available at press time.

Changing families topic of annual symposium

Families are changing in ways that affect many aspects of our society. Understanding these changes and learning how to cope with their effects will be the focus of a series of annual two-day symposia beginning in the summer of 1991.

A Woods Charitable Fund award of \$36,000 over a two-year period will help bring the country's leading family researchers to the University of Nebraska-Lincoln campus to participate in the symposia. Each symposium will also include experts in applying research findings to the solution of family problems.

The symposia are intended for program administrators, planners, research scholars, and graduate students as well as educators, legislators, and journalists.

Professor of Sociology Alan Booth, who will direct the symposia, said that although the first year's topic has not yet been decided, issues to be considered include single parent families, teen pregnancy, family support for the elderly, declining family income, divorce and remarriage, and child care. Because each symposium will also be an integral part of a three-week summer course, graduate students from around the country can

attend and obtain course credit for the specialized training they receive at Nebraska.

NCFR's Board of Directors approved co-sponsorship at its April, 1989, Board meeting in New Orleans. "Co-sponsorship gives us the opportunity to help plan this important event and at the same time gives us wider exposure as an organization without significant financial obligations," said Mary Jo Czaplewski, NCFR executive director.

A committee of NCFR members will be appointed to help plan the first symposium. Other members of the committee will be from the co-sponsoring University of NE Department of Human Development and the Family, Psychology's Center for the Study of Law and the Child, and the Sociology Department.

Papers sought for meeting on gender, family

Papers are needed for the International Conference on Gender and the Family to be held February 6, 7, and 8, 1991, at Brigham Young University in Provo, UT.

The Women's Research Institute and the Center for Studies of the Family at Brigham Young are jointly sponsoring the conference.

Proposals up to one page in length must be received by August 1, 1990. They may be for original research, position papers, or conference sessions (several papers with chair submitting the proposal).

Conference participants will be notified by October 31, 1990. Issues relating to any area of gender and the family are appropriate for research or position papers and for conference sessions.

Please send proposals to Dr. Barbara Vance, Women's Research Institute, 945 SWKT, Brigham Young University, Provo, UT 84602; 801-378-3338.

REPORT of The National Council on Family Relations

Executive Director
Editor
Typesetting and
Printing

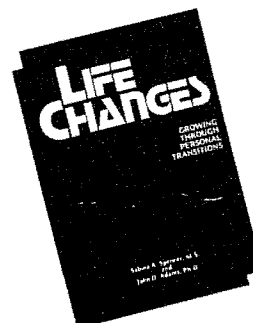
Mary Jo Czaplewski
Kathy Collins Royce
Sunshine Graphics
Cambridge, MN

NCFR Report is published quarterly by the National Council on Family Relations, 3989 Central Ave. N.E., Suite 550, Minneapolis, MN 55421. Third-class postage permit.

Subscription rate is \$5, included in annual membership dues. \$12.00 per year postpaid individual rate.

NEWS DEADLINES: February 1 for March issue; May 1 for June issue; August 1 for September issue; November 1 for December issue.

New Client Resources



LIFE CHANGES: Growing Through Personal Transitions

Sabina A. Spencer, M.S. and
John D. Adams, Ph.D.

Here's valuable help for clients experiencing a divorce or separation, death of a loved one, relocation, major job change, retirement, or any other significant life transition.

LIFE CHANGES identifies and explains the seven predictable stages we all go through during a major life change: *Losing focus; Denial; Questioning; Letting go; Testing new limits; Searching for meaning; Integrating.* Spencer and Adams are internationally-recognized organization consultants and workshop leaders.

\$8.95 paperback April, 1990

REBUILDING: When Your Relationship Ends — Audio Version

Bruce Fisher, Ed.D.

More than 300,000 copies of Bruce Fisher's book, **REBUILDING: When Your Relationship Ends**, have provided support and nurturance for people recovering from the ending of a love relationship. Now Fisher discusses his "divorce process rebuilding blocks" on audiotape, using the same 15-step model, with the added bonus of Bruce's warm and reassuring voice.

\$9.95 April, 1990



Ask your local bookseller, or order direct: add \$2.25 shipping for first book, .25 for each additional book; CA residents add 6 1/4 %.

WRITE FOR OUR FREE CATALOG!

Impact Publishers
Post Office Box 1094
San Luis Obispo, California 93406

State coordinator program started



Dawn Cassidy
Certification Director

Did you know that there are over 515 Certified Family Life Educators in 46 states, Canada, Taiwan, New Zealand, Australia, France and Puerto Rico? The

Papers sought for articles on Hill's work

A special issue of *Journal of Early Adolescence*, will feature "Theoretical and Empirical Papers Dedicated to the Work of John P. Hill."

The late John Hill was past president of the Society for Research on Adolescence and contributed to the field of adolescence as a teacher, researcher and theoretician.

All scholars, including Dr. Hill's past students, who have been influenced by his work are asked to submit theoretical or empirical manuscripts in the area of social development and family relations during adolescence. Especially welcome will be work relating to parenting issues and attachment and autonomy during the second decade of life. Particularly relevant topics include the effects of biological maturation on social relations.

Papers relating to policy considerations (in the area of adolescence) or manuscripts that take into account Dr. Hill's recommendations in the 1983 paper, "Early Adolescence: A Research Agenda," (*Journal of Early Adolescence*, 3, 1-21) would also be appropriate.

Papers submitted or invited for the special issue must be received by May 1, 1990. Editors will be Grayson N. Holmbeck and Dale A. Blyth, in accordance with the Instructions to Authors in the *Journal of Early Adolescence*.

Manuscripts should not exceed 30 pages, typed, double-spaced, including tables, figures, and references, and must conform to the guidelines in the *Publication Manual of the American Psychological Association* (3rd Edition).

Please state in a cover letter how the manuscript is influenced by Dr. Hill's work.

Send five copies to Grayson N. Holmbeck, Loyola University of Chicago, Dept. of Psychology, 6525 N. Sheridan Rd., Chicago, IL 60626; 312-508-2967.

most highly represented areas are Texas (49), Ohio (36), California (30), Pennsylvania (30) and Canada (27).

I will soon be contacting NCFR State Affiliate chairs and members to enlist their help in spreading the word about the CFLE program. I'll also be looking for information on licensing requirements for

Papers sought on teaching about families

Family Relations will feature a special collection of papers on "Innovative Ways and Controversial Issues in Teaching About Families." It will include articles on new methodology in teaching about families in early childhood programs; elementary school, high school, undergraduate and graduate education; adult and community education; and articles that address the uniqueness of family studies pedagogy and the challenge of teaching about families.

The collection might include issues like teaching small versus large classes, teaching across disciplines or from a multidisciplinary or multicultural perspective, feminist pedagogy, family life education in diverse settings, or the challenge of teaching about families as part of a liberal education curriculum or in a department where family courses are not taught traditionally.

Manuscripts need to be grounded in literature, and preference will be given to manuscripts demonstrating empirical support.

Manuscripts should be no longer than 20 pages, double-spaced, and follow American Psychological Association style. All manuscripts will be reviewed anonymously. Manuscripts must be postmarked by March 1, 1991.

Send manuscripts to: Margaret Crosbie-Burnett, Dept. of Counseling Psychology, 321 Education Bldg., 1000 Bascom Mall, University of WI, Madison WI 53706, 608-262-0461; or Katherine Allen, Dept. of Family and Child Development, 104 Wallace Annex, VA Tech, Blacksburg, VA 24061-0416; 703-231-6526.

family life educators in each state.

When the Certification Review Committee members met in New Orleans last November, they discussed the idea of marketing the CFLE program on a state-by-state basis. The CFLE State Coordinators program evolved from this discussion.

The program will work as follows: Each state, or in some cases region, will have a "State Coordinator." On a regular basis, the state coordinator will receive a listing of family life educators in their state or region who have ordered the CFLE Application Packet. The Coordinator will be responsible for calling these potential

CFLEs to see if they have any questions regarding the application process. This call will be a reminder to the applicant of the application deadline and will allow them to speak with someone personally about any questions or concerns they might have.

Directory of Certified Family Life Educators

A directory of Certified Family Life Educators will soon be issued to all CFLEs. It will provide them with a way to contact other family life educators in their area and around the world.

Don't forget: The deadline for the next CFLE Review is April 30! Call me if you have any questions or need an application.

Dawn Cassidy
Director

Welcome new CFLEs!



Congratulations to the following Family Life Educators who were certified as part of the November, 1989, CFLE review:

Ruth F. Charlesworth
Director of Family Life
Vermont Catholic Charities

Conee P. Nelson
Senior Program Associate
Parents Anonymous of Delaware

Philip A. Coyle, Ed. D.
Minister of Family Life & Counseling
Manley Baptist Church

Cynthia A. Power
President
Life Enrichment Services, Inc.

Betty Lou Hartlein
Interpersonal Relations Consultant
Creative Christian Seminars

Clarence Walker, Ph.D.
Marriage & Family Therapist
Clarence Walker Ministries

Thomas Peter Ipes, Jr., D. Min.
Clinical Director
The Christian Counseling & Educational Center

Elizabeth S. Wietholter
Developmental Therapist
Kairos Counseling Center

David L. Johnson, Ed. D.
Associate Professor of Psychology
Raymond Walters College

Raiford Woods III
Director
New Life Family Health Ministry

Forrest C. Mobley, Jr.
Director
Lake Martin Episcopal Retreat

Jill Carlson Zimmerman, M.S.
Director
Turning Point

Family Life Education Framework



This colorful 24" by 36" wall poster describes family life education by specifying major content and learning concepts for family life education programs over the life span.

IDEAL FOR:

- curriculum design
- program development
- continuing education
- classroom instruction
- career development
- program assessment

TOPIC AREAS:

1. Family Interaction
2. Interpersonal Relationships
3. Human Development and Sexuality
4. Education About Parenthood
5. Family Resources Management
6. Ethics
7. Family and Society

\$7 each (includes 1st class postage & handling)

Contact:

National Council on Family Relations
3989 Central Avenue N.E., Suite 550
Minneapolis, MN 55421

(612) 781-9331 • FAX (612) 781-9348

Affiliates share ideas, programs

Indiana

The IN Council on Family Relations met February 9 to discuss "Health Over the Family Life Cycle: Private Troubles and Public Issues," in a meeting co-sponsored with the IN State Board of Health in Indianapolis.

William J. Doherty, Ph.D., presented the keynote address, "Families and Health: Old Truths and New Discoveries," and the luncheon address was by Woodrow A. Myers, Jr., M.D., IN State Health Commissioner.

Sessions were presented on self-renewal, drug abuse prevention, family violence, grief, family coping in balancing work and family, infant mortality, family therapy and health behavior problems, HIV/AIDS on the college campus, access to health care, environmental pollutants, and intervention with families affected by dependency on alcohol or other drugs.

Papers were given on impaired fertility, life cycle housing, and marital and family adjustment of headache patients and spouses.

Thirty-two different luncheon roundtables were offered, including ones on rural health issues, health ministries, spirituality, international health, elderly parents of the adult mentally retarded, home care services, eating disorders, reproductive health issues, Alzheimer's disease, family health and fitness, and health issues facing minorities.

Michigan

"Family Futures: Implications for Practice," is the theme of the joint annual meeting of the MI Council on Family Relations and the MI Home Economics Association, April 23 in Lansing.

M. Janice Hogan, NCFR president, will speak on "Family Diversity by 2010," and Sharon A. Wallace, will address "Technology in the Future of the Family."

Sessions will be held on television and the family, food futures, blended

families, new consumer skills, adolescent counseling and sexuality, forming public and private partnerships for affordable housing, financing for the future, and the aging population.

Contact the MI Home Economics Association, P.O. Box 547, Haslett, MI 48840-0547 for more information.

Ohio

The OH Council on Family Relations and the OH Division of the American Association for Marriage and Family Therapy held a joint meeting recently.

Five sessions were presented on parent-child, marital, and intergenerational issues. Dr. Mario Tontl, director of community services at Bellfaire Jewish Children's Bureau, Shaker Heights, OH, was the keynote speaker.

Persons interested in working on plans for the fall, 1990, meeting should contact Tim Brubaker, Family and Child Studies Center, Miami University, Oxford, OH 45056.

Utah

"Children, Adolescents, and the Family," is the theme of the 1990 annual meeting of the UT Council on Family Relations. The event will be held May 4 at Weber State College.

In addition to planning sessions that focus on issues, trends, concerns, and capabilities of children, adolescents and families, the Council will present an award to the outstanding undergraduate student and outstanding graduate student in the field of family and human development.

The criteria include scholastic performance, leadership, ability of student to initiate projects, ability to work independently, ability to work as a team member, rating of student in comparison to his/her peers, community service, personal qualities, professional prominence, and professional promise.

The awards will be presented by UT Council president Tom Holman during the meeting.

Minnesota

"Shaping Tomorrow's Families" was the theme of the annual conference of the MN Council on Family Relations held December 1, 1989. It included addresses by futurist Li Rauk Broberg on "The Future Ain't What It Used to Be: Trends Affecting Tomorrow's Families," and David Olson, professor in Family Social science at the University of Minnesota on "2001: Preparing Families for the Future."

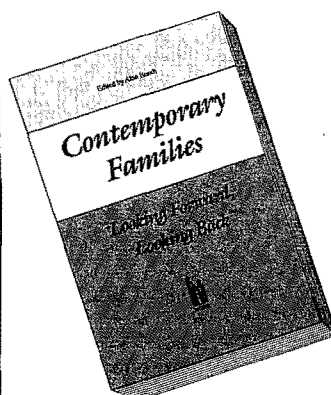
A series of innovative sessions were offered entitled, "Looking Through Different Windows: Lenses for Environmental Scanning," which provided opportunities for participants to become more familiar with certain lenses or ways to look at the world and the families in that world.

Other conference sessions focused on family and household structure; children, youth and parents; intimate relationships and gender issues; and work-family interface.

Sheila Moriarty, executive director of

the Minnesota Council on Children, Youth, and Families, concluded the conference with comments on, "Vision and Reality: Some Remarks on Getting There From Here."

The MCFR Ruth Hathaway Jewson Distinguished Service to Families Award was presented to the Minnesota Chapter of MADD (Mothers Against Drunk Driving), and the MCFR Friend of the Family Award was presented to Lois Engstrom, supervisor of Adult and Family Education within the Community Education Division of the Minnesota State Department of Education. She directs a statewide program, Early Childhood Family Education (ECFE), designed to serve all children from birth to kindergarten enrollment and their parents. The ultimate goal of ECFE is to strengthen families by enhancing the skills and understandings of parents to better provide for their children's learning and development and by providing opportunities for children to develop to their full potential. Engstrom has also served as treasurer of MCFR.



CONTEMPORARY FAMILIES: LOOKING FORWARD, LOOKING BACK

The National Council on Family Relations continues its tradition of publishing authoritative information on families with its third book in the **Decade in Review** series.

This collection of original articles surveys outstanding research on family issues in the 1980s with trend projections for the decade ahead.

Topics include: • Trends and Directions in Family Research • Child care • Remarriage and Stepfamilies • Families in Later Life • Adolescent Sex, Pregnancy, and Parenting • Work and Family Life • Impact of Divorce on Children • Domestic Violence and Sexual Abuse • Minorities • Health • Policy • Therapy

FEATURED AUTHORS

Felix Berardo
M. Belinda Tucker
Patricia Noller
Brent C. Miller
Linda Thompson
Jon R. Conte
Jay Belsky
Karen Goldstein
Leslie A. Morgan
Glenna Spitz
Marilyn Coleman
Patricia Voydanoff
Timothy Brubaker
Fred P. Piercy
Darwin L. Thomas
Pamela Maxson

Linda M. Chaters
Norval Glenn
William Vega
Catherine A. Surra
Richard Gelles
Myra Ferree
John Mirowsky
Gay C. Kitson
Toby L. Parcel
Alan C. Acocck
Karen Booth
Viktor Gecas
Wilfred Dumon
Rosemary Blieszner
Bernard Guernsey, Jr.
Robert Joseph Taylor

Jetse Sprey
Edith Lewis
Mary Anne Fitzpatrick
Kristin A. Moore
Alexis J. Walker
Catherine E. Ross
Lynn White
Elizabeth G. Menaghan
David H. Demo
Sara McLanahan
Lawrence Ganong
Joan Aldous
Jay A. Mancini
Douglas H. Sprenkle
Marie Cornwall

"*Contemporary Families; Looking Forward, Looking Back* is a valuable resource for family studies. As a decade review of the 1980s, the volume brings together the work of leading scholars and presents impressive testimony about the progress of family studies today. It will be especially useful to advanced undergraduates, graduate students, scientists, and policy makers who wish to keep abreast of the latest developments in research on families."

Graham Spanier, Ph.D.
Provost Oregon State University

RELEASE DATE: JANUARY 1991

Call (612) 781-9331
for information

Contemporary Families will be available for use as a text in the spring semester next year.



National Council on Family Relations
3989 Central Avenue N.E. Suite #550
Minneapolis, MN 55421

**KEEP THIS BOOK IN MIND WHEN ORDERING TEXTBOOKS
FOR NEXT YEAR!**

SYRACUSE UNIVERSITY

Summer Sessions

1990 WORKSHOPS IN FAMILY RELATIONS

Families in Flux: The Changing Context of Caregiving

May 14-June 22

Quality Infant/Toddler Caregiving Workshop

June 11-15

Sexual Issues for the Helping Professional

May 15-25

Divorce Mediation Workshop

May 7-11



For more information, complete this coupon & mail it to Syracuse University,
Div. of Summer Sessions, Suite 230, 111 Waverly Ave., Syracuse, NY 13244-2320.
Or, telephone (315) 443-4181.

For specific information on workshop content, telephone (315) 443-2063.

☐ Yes! I'm interested in summer professional workshops at Syracuse University.

Please send me registration information & an application.

Name _____

Address _____

City _____

State _____

Zip _____

I am interested in the following workshop(s): _____

NCFR

COFO reorganizes, publishes new report



Margaret Feldman
NCFR Washington Representative

With a new legislative session has come one new proposal: Senator Moynihan's to roll back the Social Security tax to bring about what we might call "truth in lending." Now that the President's budget is out, it is clear there is going to be a good deal of conflict before a budget is approved by Congress. Among the citizenry, there is a growing belief that government won't work no matter who is in office or what programs are proposed.

Even so, the proposed budget does not reflect much of the thinking of family proponents. Our NCFR Presidential Report, "2001: Preparing Families for the Future," sent to all members of Congress, included many programmatic issues to improve the efficacy of families. In addition to the fine suggestions there, we need to become advocates for a high minimum wage and more income for families. How to make government work is another problem!

According to a Washington Post-ABC News poll (Washington Post Jan. 21, 1990), the core problem today is "the breakdown of the family," which has caused the drug problem, among others, mainly because mothers are no longer at home to provide supervision and love for the children.

Programs to help mothers and fathers care for their children, the ABC bill to provide good child care, and the Family and Medical Leave Act, are expected to be introduced again this session and advocates are expressing hope for their passage.

A Young Americans Act, introduced by Claude Pepper before his death, and modeled after the Older Americans Act, is supported by Generations United, one of several coalitions of which NCFR is a member. Another is the Consortium of Social Science Associations which focuses on monitoring and lobbying for funding of social science research. Their excellent, fact-filled newsletter recently featured NCFR's Presidential Report, mentioned above. Still another is the Alliance for Better Childcare to promote the ABC bill.

COFO, now called the Consortium of Family Organizations, is our main coalition. To our group of Washington representatives, we have recently welcomed Kathleen Sheehan from AHEA. She has a Master's degree in Human Development Research from Maryland, directed a child care center, worked in CYF on the International Year of the Child, worked for Children's Defense Fund, and ran the Council of Governor's Child Care Resource Referral Service before joining AHEA this year.

Another new member of the COFO team is Susan Golonka, working with Theodora Ooms to staff the state initiative of the Family Policy Seminars. Seminars here in Washington have educated Congressional staffers about family

issues, particularly adolescent issues such as health, pregnancy, foster care and children with special needs. Susan comes with excellent experience in working with the states as Washington Representative of Governor Kean of New Jersey when he was working with other governors to develop a states' response to the child care and welfare reform bills in Congress. Susan is looking for strong state organizations with staff to take the lead in developing similar seminars for state legislators.

The spring season in Washington is a time for conferences -- and this year many are overlapping and very expensive. For example, Child Welfare League of America (\$275 early registration), is meeting at the same time as Children's Defense Fund (\$210 early registration). There is overlap in mission and one afternoon is joint, but it is impossible to do both.

The National Council on Aging (\$175 early registration, \$20 for retirees) is meeting at the same time as Generations United (\$100 one day). These two fit together and complement each other, since NCOA is one of the lead

organizations, with Child Welfare League, of Generations United. The Gray Panthers are meeting this spring on national health, but a meeting on Healthcare for All Americans, postponed from October, 1989, to May, 1990, is no longer scheduled. Perhaps they are waiting for the report of the Rockefeller Committee report on Long Term Care due in March.

With the above conference costs, NCFR is a real bargain! Make your plans to be with us in Seattle, November 9 to 14 and help develop a policy response to "Children and Their Families," this year's theme.

Margaret Feldman
Washington Representative

Working with Families meets in Kansas

The annual Working With Families Conference at KS State University celebrates its 10th anniversary with the theme, "Rural Families: Legacies for the Future."

The conference will be held September 26 through 28 on the KS State University campus in Manhattan.

Over 2,000 professionals working with American families have attended the previous nine meetings. Keynote speakers at the past conferences have included five current or former NCFR presidents. This year's conference will cover a variety of rural issues, including children at risk, leadership contributions of rural women, public policies affecting rural families, and the challenges facing rural families in the 1990s.

For more information contact Steve Bollman or Charlie Griffin at 913-532-6984, or write to them at The Family Center, Justin Hall, Manhattan, KS 66506.

NEW AND IMPROVED!

COFO IS BACK!

The Consortium of Family Organizations offers a new and better Policy newsletter:

THE COFO FAMILY POLICY REPORT

The Report reflects a new change from the former Coalition of Family Organizations. The four founding organizations -- American Home Economics Association, American Association for Marriage and Family Therapy, Family Service America, and the National Council on Family Relations -- welcome a new member - Family Resource Coalition - and a new name: The Consortium of Family Organizations.

The COFO FAMILY POLICY REPORT promotes a family perspective in public policy and human services, and will assist policymakers in evaluating legislation and social programs from this family perspective.

Publication Dates:

Spring, Summer, Fall and Winter

A one-year subscription is \$12.00 through the COFO office in Washington, D.C.,

but NCFR members can get a **17 percent discount** with this coupon.

Return the order form below and receive the **POLICY REPORT**

for just \$10.00.

Return the coupon by April 15, 1990, and get the very first issue of the year!

~~~~~

**\_\_\_ Yes! I want COFO FAMILY POLICY REPORT**

\_\_\_ One year \$10.00 (U.S.)  
Foreign & Canadian \$12.00

\_\_\_ Two years \$20.00 (U.S.)  
Foreign & Canadian \$24.00

Name \_\_\_\_\_

Address \_\_\_\_\_

City \_\_\_\_\_ State/Province \_\_\_\_\_ Zip/Postal Zone \_\_\_\_\_

Telephone Number (\_\_\_\_) \_\_\_\_\_

Method of Payment\*: Check enclosed \_\_\_ VISA/MasterCard \_\_\_

VISA/MasterCard Number \_\_\_\_\_ Expiration Date \_\_\_\_\_

Signature \_\_\_\_\_ Date \_\_\_\_\_

(I will pay a 7% service charge on credit card orders.)

\*U.S. funds drawn on U.S. banks only. Bank or postal money orders accepted.



National Council on Family Relations  
3989 Central Avenue N.E., Suite 550  
Minneapolis, MN 55421  
Telephone: (612) 781-9331

# Classified ads ... Classified ads

## Assistant Professor School of Home Economics and Family Ecology

The University of Akron is seeking candidates for an assistant professor position in the Family & Child Development Division of the School of Home Economics & Family Ecology. This is a nine month tenure-track position available Fall semester, 1990. Applicants should be teaching specialists in both theoretical and applied undergraduate and graduate courses, including parent education, parent/child relations, parenting skills, plus at least one additional area (family relationships over the lifespan, families in later life, or other area). The position also requires undergraduate and graduate student advising, research activity, direction of theses, curriculum development, grant writing, and service on school, college and university committees. Salary is commensurate with academic preparation and professional experience. Qualifications include a completed doctorate in Family Development, or closely related field with one degree in Home Economics; and demonstrated excellence in teaching, research, computer skills, publications, and service to the university and community. Send letter of application and credentials to Chair, Family & Child Development Search Committee, School of Home Economics and Family Ecology, The University of Akron, Akron, OH 44325-6103. Credentials should include vita, samples of recent publications or papers, transcripts of academic work and three letters of recommendation. The deadline for applications is April 15, 1990 or until position is filled. The University of Akron is an Equal Education and Employment Institution.

## Family Studies/Child Development

Tenure-track position in the Department of Home Economics available August 1, 1990. Teach undergraduate courses in family and child areas which may include human development, parenting, day care perspectives, family relations. Ph.D. in Family Studies/Child Development. Higher education teaching experience preferred as well as evidence of research and/or publication. Salary and rank commensurate with qualifications and experience. Send letter of application, vita, all transcripts, 3 letters of recommendation by April 1, 1990 to: Dr. Dellmar Walker, Search Committee, Box 86, Middle Tennessee State University, Murfreesboro, TN 37132. MTSU is an affirmative action, equal opportunity employer.

**Family Studies/Psychology:** Assistant/Associate Professor (Ph.D. required, A.A.M.F.T. clinical membership desirable). Candidates must be able to plan and teach courses on the Master's Degree level in Family Studies and on the undergraduate level in Psychology. Rank and salary are commensurate with teaching and professional experience. Letters of interest with vita should be sent by April 1, 1990 to: Dr. James Matthews, Dean, College of Arts & Sciences, Friends University, 2100 University, Wichita, KS 67213. EOE.

## Family Relations/Child Development

Two positions beginning Fall, 1990.  
1. Assistant Professor: full time, tenure track, nine-month position. Earned doctorate preferred with consideration given to doctoral candidate near completion. Doctorate required for promotion and tenure. Salary range \$27,588-\$38,136.  
2. Lecturer: one year, full time, nine-month position with possible extension of one year. Earned doctorate preferred, master's required. Salary commensurate with training and experience. Qualifications: Academic background and teaching and/or professional experience in Family Relations and Child Development required. One degree or experience in Home Economics or comparable field is preferred. Must have an understanding of and appreciation for all areas of study of Home Economics. Responsibilities: Teach undergraduate and graduate courses in Family Relations and Child Development. Ability to combine effective teaching with a commitment to research, creative activity and university and public service is necessary. Application deadline: March 1, 1990 or until position is filled, but not later than August 1, 1990. Include full academic and employment resume with at least three letters of recommendation from persons familiar with your work. Send to: Dr. Audrey Clark, Chair, Department of Home Economics, California State University, Northridge, Northridge, CA 91330, an equal employment opportunity/affirmative action Title IX, Section 504 institution.

## Play Therapy Workshop - 1990

April 26-27, Columbia, SC; May 18-19, Richmond, VA; June 18-19, Philadelphia, PA; July 13-14, Detroit, MI; Aug. 10-11, Cincinnati, OH; Sept. 21-22, Toronto, Canada; Contact: Family Psychological Consultants, 1750 25th Ave. Suite 200, Greeley, CO 80631. 303-351-6688.

## Graduate Assistantships

Ph.D. specializations in Marriage and Family Therapy, Family Studies, and Human Development. MS in Family Studies and Human Development. Nine months stipend; out-of-state tuition waived. Contact: Dr. Jean Scott, Department of Human Development and Family Studies, Texas Tech University, Lubbock, TX 79409-1162. 806-742-3000.

## Instructor/Assistant Professor Home Economics

Teach undergraduate and graduate courses in family development throughout the lifespan, child and infant development, early childhood education. Supervise student teachers. Advise students. Share department, school and college committee activities. Research expected. Full-time tenure track. Teaching 12 credits per semester. Doctorate or near completion. Demonstrated successful experience in college teaching. Experience in nursery school/primary teaching preferred. Publications and research preferred. At least one degree in Home Economics. \$21,749-\$30,446 - Instructor; \$26,437-\$37,014 - Assistant Professor. Rank and Salary dependent upon qualifications. Starting date: September 4, 1990. Send letter and resume to: Dr. Elaine Flint, Chairperson, Department of Home

Economics, Montclair State College, Box C316 V-15, Upper Montclair, NJ 07043. Review of applications and resumes will begin on February 2, 1990 and continue until an appointment is made.

Montclair State College is a multipurpose public college founded in 1908. It includes five schools: Business Administration, Fine and Performing Arts, Humanities and Social Sciences, Mathematical and Natural Sciences, and Professional Studies. The Bachelor of Arts, Bachelor of Fine Arts, Bachelor of Music, Bachelor of Science, Master of Arts, Master of Arts in Teaching, Master of Business Administration and Master of Education degrees are offered to approximately 12,500 full and part-time students.

Montclair State College is situated on a 200 acre campus in Upper Montclair, New Jersey. This area of northern New Jersey is linked by public transportation to

New York City which makes it possible to take advantage of the opportunities and resources of the city, just 14 miles away. The surrounding suburban communities also provide a wide variety of commercial, educational, cultural and religious facilities.

Montclair State College is in Compliance With All Relevant Federal and State Civil Rights Legislation. An Equal Opportunity/Affirmative Action Institution.

*More ads  
on page 7*

|                               |                                                                                                                                                                                                                                                                                                                                                                                                                                                                                                                                                                                                                                                                                                                                                                                                                                                                                                        |
|-------------------------------|--------------------------------------------------------------------------------------------------------------------------------------------------------------------------------------------------------------------------------------------------------------------------------------------------------------------------------------------------------------------------------------------------------------------------------------------------------------------------------------------------------------------------------------------------------------------------------------------------------------------------------------------------------------------------------------------------------------------------------------------------------------------------------------------------------------------------------------------------------------------------------------------------------|
| <b>POSITION</b>               | Dean, School of Home Economics<br>University of Wisconsin-Stout                                                                                                                                                                                                                                                                                                                                                                                                                                                                                                                                                                                                                                                                                                                                                                                                                                        |
| <b>DATE</b>                   | The position will become available July 1, 1990. Screening of applications will begin on March 20, 1990, and will continue until the position is filled.                                                                                                                                                                                                                                                                                                                                                                                                                                                                                                                                                                                                                                                                                                                                               |
| <b>GENERAL QUALIFICATIONS</b> | <ul style="list-style-type: none"> <li>Earned doctorate in one of the disciplines represented in the School or in a closely related discipline.</li> <li>Exemplary record of full-time teaching, research, and scholarly publications.</li> <li>Appropriate experience in higher education to include personnel supervision, budget, curriculum development, and policy planning.</li> <li>Successful experience with grantsmanship.</li> <li>Understanding and acceptance of the specialized mission of the School and the University.</li> <li>Awareness and concern for the needs of the students.</li> <li>Ability to work cooperatively and positively with faculty, academic and administrative staff, and off-campus constituencies.</li> <li>Understanding of shared governance.</li> <li>Commitment to equal opportunity/affirmative action in employment, services, and programs.</li> </ul> |
| <b>SALARY</b>                 | The Deanship is a twelve-month position with a salary range of \$60,000-\$75,000 and benefits.                                                                                                                                                                                                                                                                                                                                                                                                                                                                                                                                                                                                                                                                                                                                                                                                         |
| <b>SCHOOL DESCRIPTION</b>     | Four departments serve programs in Apparel Design/Manufacturing, Child Development & Family Life, Dietetics, Early Childhood Education, Fashion Merchandising, Food Service Administration, Food Science & Nutrition, Home Economics in Business, Home Economics Educational Services, Hotel Restaurant & Management, and Hospitality & Tourism. There are approximately 2,675 undergraduates, 70 graduate students, and 70 faculty positions in the School of Home Economics.                                                                                                                                                                                                                                                                                                                                                                                                                         |
| <b>UNIVERSITY DESCRIPTION</b> | Founded in 1891, the University of Wisconsin-Stout is located in West Central Wisconsin, 60 miles East of Minneapolis/St. Paul. With an enrollment of 7,100 undergraduate and 575 graduate students, it is one of 13 degree-granting institutions with the University of Wisconsin System. Stout is nationally and internationally recognized for its undergraduate and graduate programs leading to professional careers in industry, commerce, education, and human services through the study of home economics, technology, applied science, industrial management, and human behavior, while integrating the humanities, arts and natural, physical and social sciences into its programs. The university places a high priority on the creation of an environment supportive of women, minorities, and persons with disabilities.                                                                |
| <b>CONTACT</b>                | Interested candidates should submit a letter of application, resume, and three references (including address and telephone number) to Dr. J. Jafari, Chair, Dean Search & Screen Committee, Office of the Vice Chancellor, University of Wisconsin-Stout, Menomonie, Wisconsin 54751, USA. Telephone: (715) 232-2339; FAX: (715) 232-1416; E-Mail: jafari@uwstout.bitnet.<br><br>The University of Wisconsin-Stout is an equal opportunity, affirmative action institution committed to cultural diversity in its people and programs.                                                                                                                                                                                                                                                                                                                                                                 |



# Sections plan for conference

**Education and Enrichment Section**  
"Children and Their Families," theme of the 1990 NCER annual conference, will be of particular interest to members of the Education and Enrichment Section.

Especially timely, in relation to the social issue agenda of the next decade, the theme lends itself to a wide array of issues and concerns relevant to family life educators and researchers. Family relationships inevitably involve the concerns of children throughout the life cycle whether in the role of parent or child or both.

The 1990 program will feature two tracks: one that should appeal to researchers in which empirical papers are presented, and the other focusing on issues, methods and materials relevant to family life educators.

We will again hold workshops within the program. Another change will be a day-long, pre-conference workshop on family law. As indicated by Dawn Cassidy, CFLE director, the reviewers, and individuals submitting materials, continuing education is a need in this area. Judith Myers-Walls is coordinating the workshop plans.

Make your plans now to join us in Seattle.

Patricia K. Knaub  
Section Chair

## Family Action Section

A name change is being considered for the Family Action Section. Some members have expressed opinions that the present name lacks clarity and meaning in terms of members' concerns and interests.

To gain a broader sense of how members felt about the proposal, the Section membership was surveyed. As of

February 12, 37 members had responded (about 19 percent). One vote was unequivocally unfavorable to the proposed change, six were unsure, and 28 were unequivocally favorable towards the change.

The proposed name change was Family Action/Policy Research Section.

Five members favoring a name change suggested instead: Family Policy Research and Action Section (3), or Family Issues/Policy Research Section (1), or Family Action and Policy Research Section (1).

Four members expressing some uncertainty suggested instead: Family Policy and Policy Research Section (1), Family Policy Research Section (1), Applied and Policy Research Section (1), and Family Issues/Policy Research Section (1). One member noted an interest in aging and asked where that topic was addressed within NCER.

Three members were opposed to the name change but suggested: Family Action and Policy Section, Family Policy and Action Section, and Family Advocacy/Policy Research Section.

The proposed name change is on the agenda for the April 7 board meeting, and members who have not yet responded are encouraged to do so. If you don't respond, it will be determined that you favor the new name, Family Policy Research and Action Section, which garnered the most support (3 votes).  
Shirley L. Zimmerman  
Section Chair

## Family and Health Section

Writing newsworthy items on the Family and Health Section for the NCER REPORT (four times a year) and the Family and Health Newsletter (several times a year) is one of the fun and challenging parts of being chair of our Section.

As I write this, I am sitting at one of the most inspirational and scenic locations in the world. For those of you not familiar with the north coast of Oregon, I am sitting in the family condominium at

Cannon Beach, overlooking Haystack Rock and the Pacific Ocean. A winter storm has blown the surf to within 30 feet of my bay window. I marvel at the strength and consistency of the ocean and our beautiful earth home. I am reminded how important Mother Nature is to maintaining our mental and physical health. It is difficult to think of anything more important than that to tell you at this moment.

However, our 1990 program committee is hard at work. Five of us have met for several months in Portland to think through the abstract review process and ideas for programs and speakers at the annual conference planned for November. Committee members are Marsha Heims, Linda Ladd, Louise Martell, Doris Julian and myself.

As of February 27, a total of 147 abstracts were received for our Section, and distributed to four different review teams. The team members are: Janice Bell, Tom Campbell, Barbara Elliot, Maureen Frey, Barbara Germino, Marsha Heims, Linda Ladd, Louise Martell, Helen Moriarty, and Doris Julian.

A new abstract evaluation form was developed this year to enable us to provide more meaningful and accurate assessment and feedback to abstract submitters. After a tentative program is organized, I will travel to NCER headquarters in Minneapolis, MN, in April to meet with the entire conference program planning committee. We work together to finalize the conference program.

The Family and Health Section program committee is pursuing several special speakers and ideas. We know that Kristine Gebbie, new administrator for the

WA State Dept. of Health, will be one of our speakers. The Section also is planning a party on Sunday evening, November 11. Save the date!

As you know, the Nursing Focus Group will become a subgroup of our Section this year. The approximately 50 members will need to join the Family and Health Section. Perri Bomar and Susan Murphy, who are chairing the activity this year, are planning a program in Seattle entitled, "Teaching Strategies and Program Outcomes in Family Nursing Curricula." Look for that new addition when the preliminary program is mailed to you.

Some of the goals outlined for this year include updating the Section bylaws, increasing sources of funding, publishing two copies of the newsletter, exploring the idea of a special award for the Section, developing an exciting program for the Seattle conference, building membership (and increasing the multidisciplinary nature) and electing 1990-1992 officers.

Let me know what you would like to see and what you would like to do. This is your Section, and we need your help and interest. Happy Spring!  
Shirley Hanson  
Section Chair

**More Section  
News on  
page 11**

## Classified ad from page 6

### Family Sciences

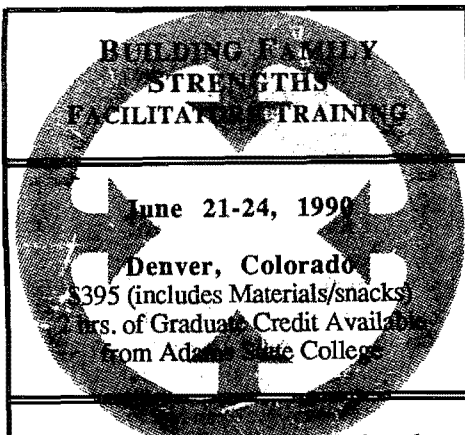
The Department of Family and Community Development in the College of Human Ecology at the University of Maryland, College Park is currently recruiting for a full-time tenure track faculty position effective Fall, 1990 or Spring, 1991. Rank and salary are open. The vacant position is in the area of family sciences.

Candidates for this position must have an earned doctorate plus teaching and research expertise in areas such as human service program management, family policy analysis and work and family issues.

The Department is an interdisciplinary unit with focus on the study of the family in contemporary society. It offers undergraduate and graduate degrees in family studies, and a nationally accredited program in marriage and family therapy. It currently has over 275 undergraduate majors, 60 graduate students, and 13 full-time faculty members. A Ph.D. Program in Family Sciences is currently in the planning stages.

The University of Maryland, College Park is located in Prince George's County just 28 miles from the city of Baltimore and 8 miles from Washington, D.C.

For full consideration, applicants should submit a letter, resume and three letters of reference by **March 30, 1990** to Chair, Faculty Search Committee, Department of Family and Community Development, University of Maryland, College Park, MD 20742. Applications will be accepted until the position is filled. The University is an Affirmative Action, Equal Opportunity Employer.



This dynamic workshop is designed to prepare professionals for certification as BFS facilitators.

You will gain powerful insights and tools for making positive changes in the lives of those with whom you live and work! Developed at the University of Nebraska; the program focuses on accessing and developing the strengths of individuals and families. The content focuses on the Traits of Strong Families: commitment, wellness, ability to cope with stress, conflict and crises, communication, appreciation and time together.

For registration and/or more information, contact:  
Linda Tharp, Ed. D.  
350 Arapahoe #5  
Boulder, CO 80302  
(303) 447-0953

## The Minnesota Institute of Family Dynamics

begins its eighth year  
as a training center for

### Bowen Theory & Therapy

the appropriate theory for understanding  
three to ten generations of family

- a four-times-a-year program (three consecutive days each quarter)
- 1990-91 class begins in April
- lecturers are:

**Murray Bowen, M.D.**

**Michael Kerr, M.D.**

**G. Mary Bourne, A.C.S.W.**

**additional Georgetown staff**

- includes group supervision of trainees' extended family work

for further information contact  
G. Mary Bourne, Director of Training  
Minnesota Institute of Family Dynamics  
6950 France Avenue South,  
Minneapolis, MN 55435  
(612) 927-5499

# New realities--tomorrow's focus



Mary Jo Czaplewski  
Executive Director

Broad, sweeping, economic, social, demographic and technological forces are occurring so rapidly that the winds of change are difficult to forecast. As the pages of this last decade of the 20th century are turned, associations of every type and size are taking on the challenges of "future analysis," or strategic planning, for the purpose of helping their professions/industries step into the 21st century. For example, trend gurus have released their newest crystal ball books - Drucker: *The New Realities*; Naisbitt: *Megatrends 2000*; Dunlop: *Leading the Association*.

NCFR is in step with the drummers. Heralding the focus on our future was David Olson's edited monograph of "2001: Preparing Families for the Future." Concurrently, the Board of Directors began strategic planning in 1988 and will release its plan for NCFR's future at the April, 1990, board meeting.

Soothsayers of the association industry have much to say about professional organizations of the future, based on the broad societal forces mentioned above. These trends will figure significantly into the changes that will be implemented for NCFR and which will impact NCFR's future. Briefly, all factors affecting the work force (both paid and volunteer), such as gender and race issues, insurance, benefits, hours and environment, will be more prominent. Shifting societal values and attitudes of the baby boomers will dominate. They are more open to change, experimental, interested in self-fulfillment rather than denial, expect social justice, and demand quality of time, products, information and life style.

Information technologies and visual imagery will become a must for all associations as this first cohort to grow up with TV and computers takes the driver's seat. As the education system continues to lag 15 to 20 years behind new demands, different educational models and sources will become more prominent, and corporations and associations like NCFR will increase their roles in training and educating their members in their professions. Thus, the certification of family life educators takes on new significance.

The globalization and dropping of barriers of the Eastern and Western worlds give rise to common interests and issues that associations cannot ignore. NCFR has international members, but now, more than ever, must reach out to them. Information technology (the Family Resources Database, for example) will become a vested tool for the "multinational" association, solving language barriers and problems of communicating over distance and time.

Amid these changes is the increasing trend of regulation of industries and professions. The association's role will be to assess and interpret those regulations and to inform its members.

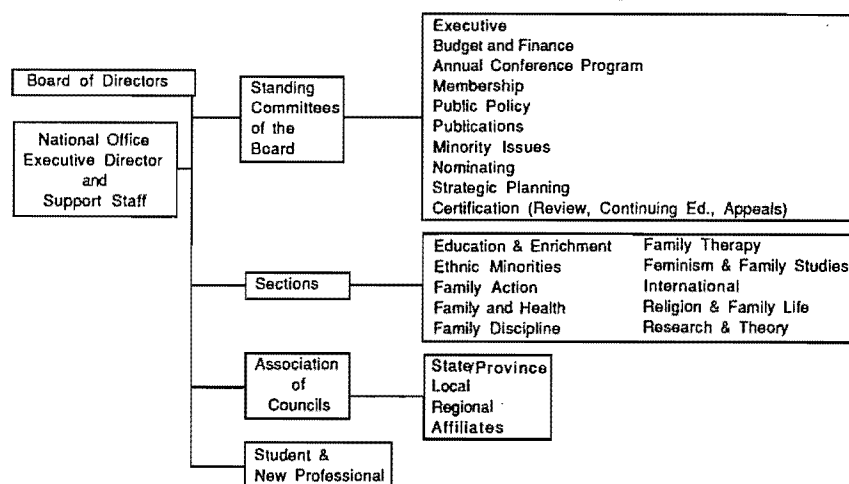
These societal trends dictate significant changes in the way associations will be run and in the modes of leadership in them. James Dunlop in *Leading the Association* cites seven major changes occurring in association management and leadership in the next ten years.

1. **Associations, especially professional member societies, will become more staff driven.** As organizations become more complex, and increase their political roles, staff will need to be better-trained and educated, more bottom-line oriented and computer based. Volunteer leaders will look to staff as decision makers as operational pace accelerates too rapidly to depend on volunteers' decisions.
2. **Chief elected officers' roles will be seen as board chairs** working in close contact with the chief staff executive.
3. **Titles will change.** The shift in responsibilities and roles of the professionalization of association management will result in the chief staff executive also carrying the title of president or executive vice president.
4. **Operations will be more businesslike** -- more internal control over costs, more detailed reporting of operations to the Board, greater emphasis on efficiency and attention to the bottom line. More decisions will be based on market and member research involving comparisons of projected revenues with initial investments required to generate those revenues. Associations will be viewed as collectors and purveyors of information of all kinds.
5. **Governing units will change.** Governing boards that operate as management committees will give way to policy making. Large boards will be streamlined and delegate assemblies will emerge. Legal counsel will become a necessity.
6. **Accountability will improve.** Greater annual reporting to members will be required.
7. **New consensus mechanisms** of intra-organizational relationships will develop to solve problems and handle disagreements. Greater emphasis on clarifying the interests and mission of the association and its members will emerge as more organizations form coalitions with others.

## Graduate students invited to apply for assistantship

A graduate assistantship is available in educational psychology for a doctoral student. A Master's degree in family studies or related field is desirable.

Contact Dr. Anne McCreary Juhasz, director, M.Ed., program in Family Studies, Loyola University, School of Education, 820 N. Michigan Ave., Chicago, IL 60611, 312-915-6011.



This chart of NCFR's current governance structure is shown above. It is large and cumbersome. As the Board and committee work to streamline and to redefine the mission, goals, and structure of NCFR, they need to hear from members like YOU. Call or write to Lynda Walters, Chair of the Strategic Planning Committee, before April 1 with your dreams, advice, and visions for NCFR. Her address is: Associate Dean, University of Georgia, Dawson Hall, Athens, GA 30602, and her phone number is 404-542-4859.

It takes members with common interests and goals to make an organization such as NCFR. As the above trends impact upon all of us, NCFR needs to answer your needs as professionals in facing tomorrow's challenges. Let us hear from you.

Mary Jo Czaplewski  
Executive Director

Dunlop, James J., *Leading the Association: Striking the Balance Between Staff and Volunteers*. American Society of Association Executives, 1989. Pp. 139 ff.

## Loyola University offers master's plan

Loyola University of Chicago offers a master's of education degree in Family Studies. The new program has a multidisciplinary, lifespan orientation to the study of the family throughout the life cycle. It prepares educators and school-related health care professionals who can facilitate understanding, communication, and problem solving within families and

between families and community organizations with whom they interact.

Contact Anne McCreary Juhasz Ph.D., director, M.Ed. Program in Family Studies, Loyola University, School of Education, 820 N. Michigan Ave., Chicago, IL 60611, 312-915-6011, for more information.



Guilford Publications, Inc.  
72 Spring Street  
New York, N.Y. 10012  
(212) 431-9800

## \$500 GUILFORD STUDENT/NEW PROFESSIONAL BOOK MANUSCRIPT AWARD OFFERED

Are You...

- ...a student or new professional with a manuscript in progress?
- ...a member of NCFR?
- ...Is your manuscript not yet contracted with any other publisher?
- ...Are you actively working towards a Ph.D. OR have received your Ph.D. in the last five years?

If you answered "yes", you are eligible to enter a new annual competition offered by Guilford Press in conjunction with NCFR!!

Winning manuscripts will be published by Guilford in the "Perspectives on Marriage and the Family" series. A \$500 award will be presented at the NCFR Annual Conference.

Manuscripts will be judged on:

Potential contribution to knowledge about marriage and family life.

**Deadline: June 1, 1990**

**Submit:**

- 2 copies of the manuscript
- 1 copy of your curriculum vita
- Cover letter certifying NCFR membership, and your professional status
- Name, address, telephone number of your academic advisor

**Send To:**

Sharon Panula  
Senior Editor, Guilford Publications, Inc.  
72 Spring St.  
New York, NY 10012  
1-800-365-7006



# Database serves ABC, CBS, CNN



**Rocky Ralebipi**  
FRD Director

Today, more than anytime in history, access to information affects our ability to function as professionals and as human beings. It is as common these days to suffer from an information overdose as from information starvation. Nevertheless, it can still be difficult to find information pertinent to your own area of interest if you do not know where or how to look for it.

Did you know that some of the leading information providers are associations? With information becoming the number one commodity in the American culture and abroad, it comes as no surprise that associations with information technology will be on the cutting edge. To quote two of the leading experts in the association industry:

"The use of computer technology will drive the decisions of associations. They will be seen as the collectors and purveyors of information of all kinds."

James L. Dunlop, **Leading The Association: Striking the Right Balance Between Staff & Volunteers**. 1989, p. 141.

"In the 1990s, major trends affecting all associations are ...technological innovation, especially information technologies... and the growth of a global economy.... Information technology and visual imagery will become the important tools for associations, especially if brought in early and rigorously explored for new uses...in the collection and distribution of educational information."

Jarrett & Mahaffie. "Trends that will reshape associations," **Association Management**. January 1990, p. 34.

NCFR is playing its rightful role in today's information industry. Through the Family Resources Database (FRD), NCFR has become visible as a major resource in the family field. Based on the telephone calls and other information requests received at headquarters, more than 70 percent come from the media, especially television networks.

We have provided resource support to television programs such as Peter Jennings' **American Agenda** on ABC; Lifetime Television's **Jane Wallace Show**; and "Don't Divorce the Children," a Family Matters Special hosted by Timothy Busfield of

"thirtysomething." We have also provided resource information to the "Oprah Winfrey Show" on CBS and family programs on CNN.

One of the most exciting requests came from a pharmaceutical company in New York looking for experts in the family field who would be willing to participate in their symposium.

The hottest topic seems to be families and children, especially with regard to the drug epidemic. Because of this growing concern and several family issues being addressed by our clients, we have been referring these people to NCFR members, especially those listed in the Human Resource Bank (HRB).

If you are involved in a program, project, or research that we might have missed, (even if you are still working on it), let us know about it. Be part of the 1,012 family professionals who participate in the HRB. All you need to do is call us and ask for an HRB form, complete it and return it to us. If you are already participating in the HRB, and have a new area of specialization, tell us so that we can update your profile. It is that simple, and it is free.

Call us about your own information needs. For only \$20.00, NCFR members (\$30.00 for non-members) can order online searches and receive results promptly. The fee includes the online search time, telecommunications, mail, and print charges for a maximum of 25 documents. Did you know that we can help you obtain reprints of dissertations and journal articles appearing in the database? Just ask us how.

The following is a sample search in the FRD on the question of drug abuse (especially crack/cocaine) and children.

- 1\_: (Drug or Crack or Cocaine) WITH abuse  
count: 964 documents.
- 2\_: 1 and Children (Statement #1 above cross-referenced with children).  
count: 173 documents
- 3\_: 2 and JA.PT. (Only journal articles selected).  
count: 39 documents
- 4\_: ..P ti/all (Browse by looking at titles only).
- 5\_: ..P bibl/1, 2, 5, 12, 13.

1. O'Connell, David F. Treating the High Risk Adolescent: A Survey of Effective Programs & Interventions. **Journal of Chemical Dependency Treatment**. 1988/89, 2, 1, 49-67.

2. Browne, Angela Christine. The Chemical Family Affair: Families & Drugs. **Employee Assistance Quarterly**. 1988, 4, 1, p. 87-95.

3. Bromley, Mary Ann & Riolo, John A. Complying With Mandated Child Protective Reporting: A Challenge for Treatment Professionals. **Alcoholism Treatment Quarterly**, 1988, 5, 3, p. 83-96.

4. Beaulieu, Michelle A. & Jason, Leonard A. Drug Abuse Prevention Program Aimed at Teaching Seventh Grade Students Problem-Solving Strategies. **Children and Youth Services Review**, 1988, 10, 2, p. 131-150.

5. Quinn, William H., Kuehl, Bruce P. & Thomas, Franklin, et. al. Families of Adolescent Drug Abusers: Systemic Interventions to Attain Drug-Free Behavior. **American Journal of Drug & Alcohol Abuse**. 1988, 14, 1, p. 65-87.

Notice that only a sample of search results is printed due to space limitations, even though 964 documents (these include persons or human resources) have been identified. This search took a total of seven minutes from connecting to the computer to printing the selected documents, and cost only \$20.00.

For more information regarding the FRD, call the NCFR headquarters office at 612-781-9331. I look forward to hearing from you.

Rocky Ralebipi  
Director

## Bereavement topic of Conference

The King's College ninth International Conference on Death and Bereavement has issued a call for papers.

This year's special emphasis is bereavement. Send a two-page proposal and a 25-word summary to Dr. John D. Morgan, coordinator of Death Education Conference, King's College, 266 Epworth Ave., London, Ont., Canada N6A 2M3. Please include a curriculum vitae.

Proposals must be received before October 1, 1990.

## Authors, Exhibit Your Books At the NCFR Conference!

The NCFR Office and Ollie Pocs (Illinois State University) are coordinating the 1990 Exhibits at the NCFR Annual Conference in Seattle, November 9-14. This year's Exhibits promise to be larger than ever and are placed in a high-traffic area.

As an author, you have a wonderful opportunity to gain exposure for you and your books and at the same time help NCFR enlarge its exhibits. Publishers have frequently informed NCFR that they depend on clues from authors for exhibiting their books. You, as an author, can be that key public relations channel. The process is easy. Simply fill out the form below and mail it to your publisher. Send a copy to the NCFR Exhibits, 3989 Central Ave. N.E., Suite #550, Minneapolis, MN 55421. Have your publisher contact the NCFR Office for specific information about the exhibits.

Publishers who reserve full exhibit booths will be given first chance to feature their authors in the "Meet the Authors" program on Tuesday, November 13. Other authors will be featured on a first-come-first-serve basis and will require an additional fee.

Fill out the form today! Continue to encourage your publisher to exhibit at NCFR and give your colleagues an opportunity to look at your latest books.

To: \_\_\_\_\_  
of \_\_\_\_\_  
(Publisher)

Publisher's Phone Number: \_\_\_\_\_

Publisher's Address: \_\_\_\_\_

I am requesting that you publicize my book(s) at the National Council on Family Relations Annual Conference, November 9-14, 1990 in Seattle. Please contact the NCFR Exhibits Coordinator, 3989 Central Ave. N.E., Suite #550, Minneapolis, MN 55421 by May 30, 1990. An exhibits brochure will be mailed to you from NCFR.

Name of Author(s): \_\_\_\_\_

Address of Author: \_\_\_\_\_

Phone of Author: \_\_\_\_\_

Title(s) of my book(s) I wish to have exhibited at the 1990 NCFR Annual Conference: \_\_\_\_\_

Date of Publication: \_\_\_\_\_

(To Author(s): Please mail a copy of this request to NCFR.)

Telephone: 612-781-9331  
FAX: 612-781-9348

**National Council on Family Relations**  
3989 Central Ave. N.E.  
Suite #550  
Minneapolis, MN 55421





# Students, new professionals invited to Seattle

Greetings! We hope that you are having a progressive year and are readily making plans to attend the annual conference in Seattle in November. We are very excited about the opportunities for participation for students and new professionals to become involved in NCFR. Several ways are possible: discussant, presiders at sessions, presenters, skills exchange participants, and other ways.

The students and new professionals are the future senior members of the organization and play an essential role in its growth and development. If you have not indicated your willingness to serve the organization, call or write to your Section chair, or me -- DO IT NOW! We need your help.

What is a "new" professional and what is the "student" category? New professionals are persons who are within five years of their last graduation date. Students are classified as those who are pursuing a degree and may maintain this designation for a period of four years. These are important distinctions for

several reasons. Upon graduation, there are adjustments and additional socialization practices that occur.

The transition from student to new professional to senior professional is most often gradual if one is prepared -- abrupt if you are not. The Board of Directors recognizes this fact and has made significant strides to provide avenues that are beneficial in the adjustment process.

It is not too late to indicate your willingness to run for the office of S/NP representative to the Board, or other meaningful participation. Decisions on the slate of candidates will be made in Seattle.

DID YOU KNOW that you are eligible for REDUCED HOUSING, FREE CONFERENCE

REGISTRATION, INDIVIDUAL SECTION AWARDS, AND STUDENT OF THE YEAR AWARDS? These are opportunities that should be given your attention. You cannot afford to miss them (see this issue of the **REPORT** for details). You have a great deal to contribute and share.

Here are the Student room rates for the 1990 conference in Seattle: \$108, triple (\$36 per student per night plus tax); and \$123, quad (\$30.75 per student per night, plus tax).

We look forward to hearing suggestions and recommendations from you soon. The mid-year Board meetings will be held in April. Recommendations are made for continued growth and professionalism in the organizations. Are

there issues you wish raised? Write or call with your news.

We are organizing an excellent program for this year's conference and we look forward to seeing you in Seattle.

Norma Bond Burgess, Ph.D.  
Student/New Professional Representative  
P.O. Drawer C  
Mississippi State University  
Mississippi State, MS 39762  
601-325-2495

Patricia A.H. Dyk  
Dept. of Family and Human Development  
College of Family Life  
Utah State University  
Logan, Ut 84322-2905  
801-750-1544

**Check the  
Student Volunteer  
form on page 11.**

## Dissertation Support Awards available

Doctoral candidates in the social and behavioral sciences and related disciplines may be eligible for a Dissertation Support Award from the American Foundation for the Blind (AFB).

The Dissertation Support Awards, which total \$4,000, are presented annually by AFB to promote social research on blindness and visual impairment. The number and size of awards, which are granted on a competitive basis, are determined by merit and the financial requirements of the winning proposals.

"We welcome doctoral dissertation proposals in such areas as sociology, psychology, education, social work and gerontology," said Katherine A. Nelson, senior research associate and coordinator of the Dissertation Support Award program.

Priority topics include literacy, access to services, socioeconomic opportunities and other quality of life issues.

Applicants must submit a completed application form; a proposal that includes a time-table, budget and plan for human subjects' protection (if appropriate); and an advisor's letter confirming departmental acceptance of the proposal.

For more information and to obtain an application form, contact Katherine A. Nelson, Senior Research Associate, Social Research Department, American Foundation for the Blind, 15 West 16th St., New York, NY 10011; 212-620-2142. Qualified candidates must submit applications by April 20, 1990. Awards will be announced on June 18, 1990.

### STUDENT/NEW PROFESSIONAL QUESTIONNAIRE

Name: \_\_\_\_\_

Address: \_\_\_\_\_

Telephone Number: (Office) \_\_\_\_\_ (Home) \_\_\_\_\_

Are you planning to attend the 1990 Annual Conference in Seattle?  
\_\_\_\_\_ Yes \_\_\_\_\_ No

If Yes, complete questionnaire and return to Norma Burgess.  
If No, send Norma Burgess your ideas for future programs.

Would you like to participate in the 1990 program? If so, indicate 1st, 2nd and 3rd choices:

- \_\_\_\_ Student/New Professional Representative to Board of Directors
- \_\_\_\_ Student/New Professional Representative to Sections/Committees (Section: \_\_\_\_\_)
- \_\_\_\_ Skills Exchange
- \_\_\_\_ Discussant for session of program (area: \_\_\_\_\_)
- \_\_\_\_ Session Chair (area: \_\_\_\_\_)
- \_\_\_\_ Annual conference student volunteer (8 hours in return for free conference registration)
- \_\_\_\_ Helping with student-sponsored party
- \_\_\_\_ Other

Return questionnaire (at once) to:

Norma J. Burgess, Ph.D.  
Department of Sociology/Anthropology  
Mississippi State University  
P.O. Drawer C  
Mississippi State, MS 39762

### STUDENT HOUSING INFORMATION NCFR 1990 Annual Conference November 9-14, 1990 Westin Hotel, Seattle, WA

#### Reservation Form for Student Housing

Name \_\_\_\_\_

Address \_\_\_\_\_

Phone \_\_\_\_\_  
(Please Give Home and Office Numbers)

Date/Time Arrival \_\_\_\_\_

Date/Time Departure \_\_\_\_\_

Roommate(s) (include name, address, phone, date of arrival and departure)

Please match me with \_\_\_\_\_ Roommate(s) if possible.

Number of additional Roommates Desired \_\_\_\_\_

Smoking \_\_\_\_\_ Non-Smoking \_\_\_\_\_

Student Conference Room Rates:

|        |          |
|--------|----------|
| Triple | \$108.00 |
| Quad   | \$123.00 |

Student members will be responsible for their room costs; costs will not be assumed by NCFR or the hotel if the preferred room occupancy cannot be attained or if roommates fail to attend the meeting. Proof of student status in NCFR will be needed if rooms are reserved directly with the hotel rather than through this service. Those making reservations with this service will be guaranteed with the hotel as having student status (following verification through NCFR). Reservations will be made through this service only until September 1, 1990. Any request received after that time will be returned with instructions to make reservations directly with the hotel. Mail registration form and a \$35.00 deposit check made out to the Westin Hotel by September 1, 1990, Norma Burgess, P.O. Drawer C, Mississippi State, MS 39762.

### NCFR STUDENT OF THE YEAR AWARD

## STUDENTS!!!!

Have you been a member of NCFR for two years or more?  
Are you an outstanding student?  
Do you have the potential to be a leader in your field?

**THEN**

Wait no longer! Ask a valued faculty member to nominate you for the  
**NCFR STUDENT OF THE YEAR AWARD**

The winner receives national recognition and a \$500 cash award.  
The faculty member's nomination should be sent to:

Norma Bond Burgess, Ph.D.  
P.O. Drawer C  
Mississippi State University  
Mississippi State, MS 39762

Nominating letter must be postmarked by April 30, 1990.  
For more information, call Norma at 601-325-2495.

# Section News from page 7

## Family Discipline

The Family Discipline Section is exploring the possibility of a name change. Discussion of names that may more accurately reflect the Section's mission began at the 1989 annual conference in New Orleans. More information on the proposal will be printed in the Section newsletter, with a final decision occurring at the annual conference in Seattle in November.

The Section's conference program will include a session on teaching family science as well as a panel discussion on "Where Should Family Science Go in the 1990s?"

The Section will co-sponsor a Teaching Family Science conference, May 18 to 20 in Bloomington, IN. Individuals who teach family science are invited to meet with others interested in sharing information, building curricula, developing teaching activities, and increasing awareness about the topics and issues of family science teaching. (seep 14)

Proposals for papers, panels, or demonstrations are being solicited. The deadline for submissions is April 8. Send them to Teaching Family Science, Randal D. Day, Dept. of Child, Consumer and Family Studies, College of Family Science, 107D White Hall, WA State University, Pullman, WA 94164-2010. Bill Meredith  
Section Chair

## Family Therapy Section

NCFR's Family Therapy Section has activated plans for the annual conference in Seattle in November. Submissions are coming in, and Section members are looking for a master lecturer.

Rick Miller, KS State University, has begun work on a Section newsletter. Persons with ideas or articles should contact him at the Dept. of Human Development and Family Studies, Justin Hall, KS State University, Manhattan, KS

66506-1403.

The Section has formally begun a mentor program. Students who would like to be paired with a Family Therapy Section member at a university or in private practice, or any Section member interested in beginning a mentoring relationship should contact Tony Jurich, Dept. of Human Development and Family Studies, Justin Hall, KS State University, Manhattan, KS 66506-1403.

The goal is to pair the students and mentors to enable students to have another resource in the field as they begin their professional careers.

Tony Jurich  
Section Chair

## Feminism

During the past two months, the Feminism and Family Studies Section members have been laboring to implement Section goals. As a reminder, please submit feminist teaching materials to Donna Solie as soon as possible. (Family and Child Development, 203 Spidle Hall, Auburn University, Auburn, AL 36849.

Section members who are willing to participate in the mentoring program should contact Alexis Walker, HDFS, OR State University, Corvallis, OR 97331.

Perhaps the most pressing issue regarding deadlines is to encourage submissions to the "Outstanding Contribution to Feminist Scholarship Paper Award," and the "Outstanding Research Proposal from a Feminist Perspective Award." Since this is the first year for the awards, please help publicize them. Post the announcements in your department; take a moment to urge a colleague (especially new professionals and graduate students) to submit; volunteer to lighten their work in the next month so that they can finish a paper or proposal; be creative!

The deadline for the award submissions is April 30. Please send materials to Dr. Polly Fassinger, Awards committee chair, Dept. of Sociology, Concordia College, Moorhead, MN 56560.

Finally, the Section Endowment committee has been working on plans for a special fund-raising evening in Seattle. Jessie Bernard has already graciously

accepted our invitation to participate.

The Section received 40 submissions for the 1990 program -- a very good number!

Karen A. Polonko  
Section Chair

See Sections  
on page 12

## Feminism/Family Studies Section announces special awards

### Paper Award

The Feminism and Family Studies Section of NCFR is seeking applicants for their first "Outstanding Contribution to Feminist Scholarship Paper Award."

Applications for the non-monetary award are open to all graduate students and new professionals (with up to five years post-doctoral work). Papers should demonstrate contribution to feminist scholarship and use of feminist frameworks and methods.

Applicants should be sole author or first author of the published or unpublished paper. To apply, please submit five copies of the paper to Dr. Polly Fassinger, Awards Committee Chair, Dept. of Sociology, Concordia College, Moorhead, MN 56560 (telephone: 218-299-3549).

The application deadline is April 30. The award will be presented at the 1990 NCFR annual conference in Seattle in November. A summary of the paper will be published in the Feminism and Family Studies Section newsletter.

### Research Proposal

The Feminism and Family Studies Section is seeking applicants for the first "Outstanding Research Proposal from a Feminist Perspective Award." Graduate students and new professionals (with up to five years of post-doctoral work) are encouraged to apply for the \$500 award.

Proposals will be evaluated for their potential contribution to feminist scholarship and use of feminist frameworks and methods.

Applications should include: 1) an abstract of 100 words or less, 2) a five-page (maximum) proposal outlining the project's theoretical foundation, research methods, and potential contributions to feminist scholarship, and 3) a half-page budget.

Please send five copies to Dr. Polly Fassinger, Awards Committee Chair, Dept. of Sociology, Concordia College, Moorhead, MN 56560 (218-299-3549).

The deadline for applications is April 30. The award will be presented at the 1990 NCFR annual conference in Seattle in November. A summary of the recipient's research results will be published in the Feminism and Family Studies Section newsletter.

## Students: volunteer work earns free registration

Each year during the Annual Conference, NCFR student members have the opportunity to volunteer their services for 8 hours in exchange for a "free" Conference registration. The number of positions is limited: Send in your form soon!!

### What is a Student Volunteer?

- A representative of the National Council on Family Relations to those who attend the conference.
- Someone who exchanges 8 hours of work during the conference for a refund of the student registration fee (\$50).
- A new professional/student who would like to observe the behind-the-scenes activities of a national Conference.
- Someone who would like additional opportunities to network with other students and professionals.
- A person who is committed to making attendees welcome and who wants to help others.

### What are the Responsibilities of a Student Volunteer?

- Attend training sessions before beginning work as a volunteer.
- Check in at the student volunteer desk upon arrival at the conference.
- Be at your assigned position 15 minutes before you are scheduled to work to be briefed on the day's progression of events and information pertinent to your job and shift.
- Be willing to do any task necessary for the smooth operation of your specific assigned project and the conference as a whole. (Note: Some positions may include lifting and moving boxes and equipment.)
- Read the Conference program in advance so you are able to answer questions which may be asked by attendees.

To be considered for a volunteer position, please complete the application form and return to: David Bird, Oregon State University, Department of Human Development and Family Sciences, Milam 322, Corvallis, OR 97331 (phone: 503-737-4765).

### STUDENT VOLUNTEER FORM

The National Council on Family Relations 1990 Annual Conference will be held November 9-14 at the Westin Hotel, Seattle, WA. Student volunteers will be needed for behind-the-scenes jobs during the conference. Your help will be appreciated.

DEADLINE FOR SUBMISSIONS: SEPTEMBER 15, 1990

Name \_\_\_\_\_ School \_\_\_\_\_

Address \_\_\_\_\_

Phone: Day \_\_\_\_\_ Evening \_\_\_\_\_  
(include Area Code)

Rank order the areas in which you would be willing to volunteer your time:

- |                        |                                              |                            |
|------------------------|----------------------------------------------|----------------------------|
| ___ registration       | ___ host/hostess                             | ___ special events set-ups |
| ___ local information  | ___ audio-visual set-ups &                   | ___ miscellaneous          |
| ___ employment service | ___ audio taping                             | ___ exhibits               |
| ___ press room         | ___ general errands (I have access to a car) |                            |

Please check the following times you would be willing to volunteer your time: (A total of 8 hours is required - you must work a minimum of 4 hours at a time.)

- |                            |                              |                               |
|----------------------------|------------------------------|-------------------------------|
| <u>Friday, November 9</u>  | <u>Saturday, November 10</u> | <u>Sunday, November 11</u>    |
| ___ afternoon              | ___ morning                  | ___ morning                   |
|                            | ___ afternoon                | ___ afternoon                 |
|                            |                              | ___ evening                   |
| <u>Monday, November 12</u> | <u>Tuesday, November 13</u>  | <u>Wednesday, November 14</u> |
| ___ morning                | ___ morning                  | ___ morning                   |
| ___ afternoon              | ___ afternoon                |                               |
| ___ evening                |                              |                               |

For more details or clarification, contact David Bird (503-737-4765).

Students who work 8 hours will receive a refund of their conference registration fees for the NCFR Annual Conference.

# Section News from page 11

## Religion and Family Life Section

Proposals for our Section's sponsorship of lecturer(s) and of symposia, workshops, posters, and paper presentations around the theme, "Children and Their Families," at the 1990 NCFR conference in Seattle are being thoughtfully reviewed. I'm confident that the Religion and Family Life Section's contributions to the program will give a special focus to the ways in which children are part of our spiritual (as well as familial) experience -- beginning with a delightful Sunday worship service with children's singing and families' participation.

Your officers for the 1990-1992 term are: Chair, Connie Steele, Child and Family Studies, University of Tennessee, Knoxville; Vice-Chair, Ruth C. Hatch, 7106 Waverly Court, Kansas City, KS 66109; Secretary-Treasurer, Jo Lynn Cunningham, Child and Family Studies, University of Tennessee, Knoxville; Student Representatives -- Senior New Professional Sandra F. Dunnington, College of Nursing, University of Delaware, Newark, DE; and Junior New Professional Rosanne Farnden, British Columbia Council for the Family, Vancouver, B.C.; and past-Chair, Ron Flowers, General Conference of Seventh-Day Adventists, Silver Spring, MD. We are enthusiastic about providing the Section program that will serve you well!

Look at what we had last year at NCFR in New Orleans led by 1987-89 Religion and Family Life Chair, Ron Flowers: Our section contributed substantially to the 1989 theme, "Families and Sexuality." The Interfaith Service on Sunday morning was inspired by the "Rhythms" of meditation thoughts from Louise Bates Evans and Dixieland jazz playing the familiar, "Just a Closer Walk with Thee" and "Amazing Grace." An audience of more than 250 heard our co-sponsored Distinguished Lecturer, Sol Gordon, champion "Raising Your Child with Values in a Permissive Society." Family Therapy and our Section co-sponsored Ed Bader's workshop, "Changing Family Patterns at Family Transition Points," and Jeremiah Strouse led a symposium regarding "Gender Differences in the Relationship between Religiosity and Premarital Sexual Permissiveness." Others spoke about Religiosity and Sexuality, Sexuality in Today's Youth and Adolescents, Sex Education in the Church, Family as Faith Transmitter, Family in Hymns, and other topics.

With the 1989 business meeting report of 221 members in the Section, Dr. Ruth Hatch consented to compile and send two newsletters during 1990 -- one in February and another in September. For the first issue, some of you suggested that all send the following, so that we could network and more easily collaborate on research, preparation of group work, and plan to meet your needs for the NCFR Annual Conference:

- (a) list of your research interests and areas of expertise;
- (b) reviews of new, recommended publications and resources -- e.g. annotated and/or church-related Family Life Education programs;
- (c) suggested films, workshop, study books;
- (d) recommendations of speakers you want to hear at NCFR;
- (e) NCFR symposia and pre-conference workshops desired.

As your chair, I am enthusiastic about what the future decade of the 1990s can accomplish for families. At last I believe that our national Congress is considering the family as the entity it must attend to in appropriate legislation. Families within other nations are also clamoring for attention and are changing their worlds.

While all that the family needs may never receive full measure, our never losing faith in being advocates for families and their children may, in reality, be the critical factor.

Please be in touch to guide and find what you want our Religion and Family Life Section to do this year.

Connie Steele  
Chair

## Research and Theory Section

The main activity of the Research and Theory Section since November has been the transition from the leadership of Section Chair David Klein. David, as always, was abundantly prepared for the transition, and turned over to me a 12-inch stack of files, each labeled and organized. During the last few months, I have been absorbed with reading those files and getting my feet on the ground as chair of the Section.

As I am writing this item in Early February, I await copies of the abstracts and proposals submitted for presentation at the Research and Theory Section sessions at the annual conference in Seattle. Based on advice from David Klein and Vic Gecas, I expect we will receive an abundance of excellent proposals and abstracts. I know we will need volunteers to serve as presiders and discussants for the sessions, and I ask that Section members who would like to be either a presider or discussant write to me in the next few weeks and identify an area or areas in which they feel comfortable participating.

Alexis Walker, chair of the Reuben Hill Award Committee, has recently completed nominating new members to the committee. Letters informing them of their appointment went out last week, and Alexis and her committee will shortly be getting down to the arduous job of selecting the winner of the 1990 award.

Since 1990 is also a year in which the Burgess Award is given, Marie Osmond and her committee will be reviewing candidates for that award.

At the 1989 Research and Theory Section business meeting Gay Kitson and Suzanne Steinmetz were appointed to examine the feasibility of creating a Research and Theory Section newsletter. Section members who have ideas or suggestions on that matter should contact either Gay or Sue, or write to me, and I will pass the letters along. The possibility of awarding student travel grants was also discussed. Finally, Section members approved the motion that the Section sponsor a "distinguished

lecture" by a nationally recognized scholar in the area of "Children and Their Families" at the 1990 conference. At the moment, we are exploring possible speakers and co-sponsorship with other Sections.

The discussion of selecting a nationally recognized scholar in the area of children and their families prompted me to think about the individuals that Section members would identify as the leading, or most articulate, spokespersons on families and children. I posed the following question to a number of colleagues in New Orleans, "Who are the three leading spokespersons, from the point of view of Research and Theory, about families (or, about children and families)?" I would like to say that there was unanimity in the responses I received, but I have to admit, no one I spoke with would answer my question. Therefore, I have decided to put the question to the Section membership and conduct a truly unscientific poll. Consider who you think are the three major spokespersons on the subject of (1) families, and (2) children and families, and send me your responses. Assuming I receive anything, I will report the results in a future issue of NCFR *REPORT*.

Richard J. Gelles  
Section Chair

## Single Parent Focus Group

Plans are underway to identify three program models to provide education and enrichment for single parents and their children. The models will be presented during the Single Parent Focus Group meeting at the annual conference in Seattle in November.

If you are involved in model programs and would like to share your ideas, please submit a summary for review by May 1 to Brenda Hayes Johnson. The one-page summary should include (1) a statement of program goals and target audience; (2) program format and structure; (3) description of efforts to train other professionals in program implementation, if any; and (4) evaluation.

Programs which include children will be given special consideration, and pilot programs which have not been evaluated are also welcome. They may provide opportunities for networking between family life educators and researchers.

New co-chairs of the focus group were selected at the November annual conference. Our thanks to Helen Clemishaw and Maureen Culkin Rhyne for leadership over the past two years.

The new co-chairs are Brenda Hayes

Johnson, Psychological Serv., and Hum. Dev. Center, 220 Commerce Dr., Suite 408, Ft. Washington, PA 19034; (215-540-5860); and Sheila Sussman, Center for Family Resources, 384 Clinton St., Hempstead, NY 11550; 516-489-3716.

Brenda Hayes Johnson  
Focus Group co-chair

## Work and Family Focus Group

The Work and Family Focus Group sponsored a panel discussion on "Family-Responsive Corporate Policy" during the 1989 annual conference in November. Participants were Donna Klein, program director, Dept. of Work and Family Life, Marriott Corp., and Von Johnston, director of personnel, People Division, Wal-Mart Stores.

Klein reported the results of a recent employee survey on work and family needs. Johnston described Wal-Mart's "Resources for Living" program, an employee hotline.

Leslie Koepke, University of WI-Stout, and Roma S. Hanks, University of DE, co-chaired the session and introduced speakers. Dennis Orthner, University of NC, summarized and suggested future directions for research and program development.

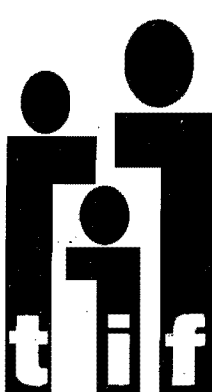
Members agreed to apply for sponsorship by the Family Action Section. A program committee was formed for next year. Please send program suggestions to Koepke, or to Roma Hanks (Dept. of Individual and Family Studies, Amy Rextrew House, University of DE, Newark, DE 19716; 302-451-8511).

Roma Hanks  
Section co-chair

## Meetings

April 26-27, 1990 -- Harrisburg, PA: "The Sexual Victimization of Children, Youth and Adults," theme of fifth annual conference sponsored by the PA Coalition Against Rape. Keynotes: Byllye Avery, Arlene Violet. Contact PCAR, 1-800-692-7445 in PA; or 717-232-6745 outside PA.

May 2-4, 1990 - Seattle, WA: "Your City's Kids" a national conference on children and youth. Contact Richard McConnell, program development chair, 2201 Sixth Ave., Mailstop 32, Seattle, WA 98121-2500; 206-442-0482.



# Identify yourself

as a member of the  
**National Council on Family Relations**

OUR GOLD EMBOSSED LAPEL PIN  
FEATURES NCFR'S LOGO SET ON  
A 3/4-INCH HIGH BACKGROUND.  
ONLY \$6.00 EACH

**National Council on  
Family Relations**  
3989 Central Avenue N.E.  
#550 Mpls., MN 55421  
(612) 781-9331  
(612) 781-9348 FAX



# All roads lead NCFR to Seattle

All roads lead to Seattle and the 1990 NCFR annual conference, November 9-14 at the Westin Hotel, with the relevant theme of "Children...and Their Families."

Jay D. Schvaneveldt, program vice-president, and his committee, are hard at work planning the event. Nearly 600 proposals were received at NCFR headquarters and have been dispersed to the various program committee chairs who are now in the process of blind reviewing and choosing the proposals to be presented at the conference. The entire program committee will meet April 5 and 6 to finalize the plans. Anyone who submitted applications will be notified by May 1 about their proposal.

The program will be superb this year, and we encourage you to make plans now to attend the conference. In addition to the sessions, the conference provides an



opportunity for family professionals to "rub shoulders" with leaders in the field. Tuesday evening will be left open to allow attendees time to enjoy Seattle scenery or

to participate in a boat trip to Blake Island and Tillicum Village for a salmon buffet dinner. The salmon steaks are prepared by an Indian chef who has a secret way of cooking over an open fire. During the evening, attendees will be treated to authentic Indian dances.

Don't wait until the last minute to reserve a room at the Westin Hotel. Last year NCFR's block of rooms sold out one month before the cut-off date. Additional rooms have been added to this year's block, but all signs indicate that attendance will be higher than ever, and the hotel may fill up early again. Call the Westin at (206) 728-1000 and ask to reserve a room at the NCFR convention rate. Remember to identify yourself as an NCFR attendee to take advantage of these

conference rates:

Single - \$82, plus tax per day  
Double - \$93, plus tax per day

Registration Rates for this year are:

| Type of Registration   | Rate  |
|------------------------|-------|
| Member                 | \$110 |
| Non-member             | \$175 |
| Member Student         | \$ 50 |
| Non-member Student     | \$ 70 |
| Emeritus               | \$ 75 |
| Second Family Member   | \$ 80 |
| One-Day                | \$ 75 |
| One-Day Student        | \$ 25 |
| Membership Package     | \$185 |
| Student Member Package | \$ 90 |

## 1991 conference in Denver

It's not too soon to begin thinking about the 1991 NCFR annual conference in Denver, the Carnation Capital of the World.

We'll be in Colorado, the state that was named for the Spanish word for the river drawing its color from the area's red soil. Colorado is the only place in the nation where four states join borders: Utah, Arizona, New Mexico and Colorado.

Colorado has the highest average elevation - 6,800 feet - with 53 mountains above 14,000 feet. Known as the "Mother of Rivers," more rivers begin in Colorado than in any other state. Within its borders are two national parks, two national grasslands and 12 national forests.

Denver, on the South Platte River, is 12 miles east of the Rocky Mountains. Although the city averages 59 inches of snow annually, it also averages 300 days of sunshine - more than Miami or San Diego. Golf and tennis are played all year, and Denver boasts more sporting goods stores than any other U.S. city. The city also has the largest park system.

Surprisingly, there are more federal

government offices in Denver than anywhere else except Washington, D.C. The city is home for the Denver Center for the Performing Arts, the Botanic Gardens, the Denver Zoological Gardens, and the Denver Zoo (and animal nursery). The Denver Art Museum has a world-renowned collection of Native American art, while the Black American West Museum and Heritage Center has an outstanding photography collection of Black cowhands and pioneers.

The museum of Western Art and the Colorado State History Museum both have major collections on pioneers,

cowhands, and Native Americans. Other attractions are the Denver Museum of Natural History, Elitch Gardens Amusement Park, the Children's Museum, and the "Unsinkable" Molly Brown House Museum, home of the woman who rescued many from the sinking Titanic.

Plan to arrive early or stay after the conference to enjoy Denver and other parts of Colorado. I'll look forward to seeing you there.

Alexis Walker

1991 Annual Meeting Program Vice-President-Elect

## Meetings

May 11-14, 1990 -- Malta: "Violence and Families: Managing Conflict," international session of the IUFO Commission on Marriage and Interpersonal Relations. Contact Christopher Clulow, IUFO, 28, Place Saint-Georges, 75009 Paris, France.

May 17-20, 1990 -- Philadelphia, PA: North American Society of Adlerian Psychology annual convention and workshops with featured speakers David D. Burns and Letty Cottin Pogrebin. Contact: Linda L. Wise, Convention Coordinator NASAP '90, 5353 Manhattan Circle, Suite 103, Boulder, CO 80303; 303-499-2299.

The next  
deadline  
for REPORT  
is  
May 15, 1990

**National Council on Family Relations  
Annual Conference**

Where: Westin Hotel  
Seattle, Washington - "The Kids Place"

When: November 9-14, 1990

Jay D. Schvaneveldt, Utah State University,  
Program Vice President

**Major Speakers...**

**JUDITH S. WALLERSTEIN**  
"The Long-term Effects of Divorce on Children and Their Families"  
Psychologist, researcher, lecturer, well-known author, founder and director, Center for the Family in Transition, Corte Madera, CA

**JENNIFER JAMES**  
"A Cross-cultural Perspective on America's Children and Their Families"  
Cultural anthropologist, lecturer, newspaper columnist, talk show host, Seattle, WA

**JAY BELSKY**  
"Childhood Experiences, Interpersonal Development, Sexuality and Reproduction: Recasting Extant Data in a Biosocial Perspective"  
Professor, author, expert witness on child care issues, Pennsylvania State University

**KAREN A. POLONKO**  
"Implications of Feminist Scholarship for the Study of Families and Children"  
Award winning writer, researcher, and speaker in family primary relationships, feminist issues, professor, Old Dominion University

For more information contact:

Conference Coordinator  
**National Council on Family Relations**  
3989 Central Avenue, NE, Suite 550  
Minneapolis, MN 55421  
(612-781-9331)

**MEET THE AUTHORS**

The "Meet the Authors" program will be back again in 1990. This year the program will take place on Tuesday, November 13 from 4:45 to 5:45 p.m. in the Exhibits area as part of the concluding ceremonies of the Exhibits.

If you have published a book which relates to the conference theme and would like to be featured as an author, please complete the following steps:

1. Fill out the form below and return to the NCFR Conference Coordinator by **July 15, 1990**.
2. Notify your publisher about this program.
3. Books which were featured in the "Meet the Authors" previous showcases will not be eligible for the 1990 program.
4. Publishers who have reserved full exhibit space at the conference will be given first priority for the authors they wish to feature and will not be charged the \$25 fee. The remainder of authors will be on a first-come-first-serve basis.
5. There is a \$25 fee for being featured in the "Meet the Authors" program. In addition, publishers who have not reserved full exhibit space must enter the book to be featured in the Combined Book Display at a cost of \$50.

---

I would like to be featured in the "Meet the Authors" program at the 1990 conference. Please contact my publisher and make arrangements.

Name of Author(s): \_\_\_\_\_

Address: \_\_\_\_\_

\_\_\_\_\_

Name of Publisher: \_\_\_\_\_ Contact Person: \_\_\_\_\_

Address of Publisher: \_\_\_\_\_

\_\_\_\_\_

Publisher's Phone Number (include area code): \_\_\_\_\_

Title of Book: \_\_\_\_\_

Date of Publication: \_\_\_\_\_

\_\_\_\_\_

Mail form by **July 15, 1990** to Conference Coordinator, NCFR, 3989 Central Ave. N.E., Suite 550, Minneapolis, MN 55421.

# Teaching Family Science Conference meets

You are invited to participate in the 1990 Teaching Family Science Conference and Workshop, May 18 to 20 in Bloomington, IN. Last year's meeting held in Provo, UT, was an exciting opportunity to meet with others interested in sharing information, building curricula, developing teaching activities, and increasing awareness about the topics and issues of family science teaching.

Sessions utilized a number of formats and focused on such varied topics as developing classroom activities, innovative use of media in the classroom, streamlining internship supervision, increasing proficiency of graduate students serving as instructors, and family education as an intervention with at-risk teenaged students. The meeting offered participants the opportunity to network with others interested in and committed to quality instruction in family science.

This pattern will continue this year by encouraging individuals involved in teaching family science at all educational levels to participate. If you want to put more emphasis on the teaching parts of the field, or if you have been waiting for a conference or workshop on teaching methods to share your ideas or join with

others in working on innovations, please attend. You also may submit a proposal to the program committee. If you are unable to get involved, but know of a colleague who might want to attend and/or make a presentation, please pass along this invitation.

Proposals for papers, panels, or demonstrations are being solicited, and topics of these are limited only in that they must relate to family science education. The deadline for submitting proposals is April 8, 1990. Proposals should be sent to: Teaching Family Science, Randal D. Day, Department of Child, Consumer and Family Studies, College of Family Sciences, 107 D. White Hall, Washington State University, Pullman, WA 99164-2010. If you wish, you may submit your proposal via Bitnet to: DAY@SUVM1.BITNET.

Participants are encouraged to bring copies of materials, i.e., classroom activities, handout, syllabi, etc., to share with others who attend.

If you are intrigued and would like to know more about the conference-workshop, send your name, address, telephone number, and, if possible, your Bitnet address.

The conference is sponsored jointly by the Family Discipline and Education and Enrichment Sections of the National Council on Family Relations. Arrangements are being made for the conference to provide continuing education credits for maintaining certification in NCFR's family life education certification program.

The conference will be held at the Fourwinds, Clarion Resort, on Lake Monroe near Bloomington, IN. In addition to the conference meetings, participants will be able to participate in the lake's recreational activities and to meet informally in spectacular scenery.

The registration fee for the conference is \$25. For those flying into the Indianapolis International Airport, it is possible that a free or low cost shuttle service may be provided to the conference site. Lodging is available at the Fourwinds for \$80 per room per night. Up to four persons may occupy a room.

A limited number of rooms have been set aside for the meeting, and in order to receive the reduced conference rate, you must make your reservation by April 18. If you would like to control your

costs by sharing a room, but do not know anyone who is going to the conference, contact Kathleen Gilbert. Dept. of Applied Health Science, HPER 116, IN University, Bloomington, IN 47405; or call 812-855-5209, GILBERTK@IUBACS.BITNET as soon as possible. She will then attempt to match you with others interested in having a roommate for the conference.

## Meeting

April 9-11, 1990 - Milwaukee, WI: "From Victim to Advocate Through Recovery," National Association of Adult Children of Dysfunctional Families, first conference. Keynoters: Dan Sexton, national Child Abuse Hotline chair from Hollywood; John Friel, Ph.D., author; and Ann Smith, author. Contact NAACDF, 842 Forest Circle, Fond du Lac, WI 54935; 414-923-7606 or 921-6991.

### HONOR YOUR COLLEAGUES!

#### CALL FOR NOMINATIONS FOR 1990 NCFR AWARDS!

##### DISTINGUISHED SERVICE TO FAMILIES AWARD

This award recognizes those who have provided exceptional leadership and/or service to the cause of better family living. The contributions in "action" programs represent the importance of family relationships in the future rather than the past. Nominations may be made for national leaders in the family field, political figures, entertainers, volunteers who have played significant roles in helping families. Nominees need not be NCFR members to be eligible for this award, which is sponsored by the Association of Councils.

Mail nomination form and supporting documents to: John Conger, 3901 Granny White Pike, Nashville, TN 37204 (615-269-1000).

##### MARIE F. PETERS ETHNIC MINORITIES OUTSTANDING ACHIEVEMENT AWARD

The Marie F. Peters Ethnic Minorities Outstanding Achievement Award is presented in memory of Marie F. Peters, a distinguished scholar, researcher and practitioner, who served NCFR with distinction. This award is given to an NCFR member in recognition of excellence in contributions made in the area of Ethnic Minority Families.

Criteria for Selection: 1) Leadership; 2) Scholarship and/or service - research, publication, teaching and community service; 3) Contribution to the Ethnic Minorities Section; and 4) Contribution to the National Council on Family Relations.

The Award is presented to an individual, but nominations are encouraged in all areas identified above.

Send nomination form and attached statement to indicate basis of nomination, listing names and addresses of three additional people to document nominee's qualifications. Return all nomination forms to: Alice Coner-Edwards, 1825 Sudbury Ln. NW., Washington, DC 20012-2202 (202-882-8625)

##### ERNEST W. BURGESS AWARD

The Burgess Award is given to an individual who has shown a distinguished career in the field of family research and scholarship. Please note this is a career award, and not an award for a single meritorious contribution. Please attach a statement to the nomination form with data supporting your nomination. Return all data to Marie Osmond, Dept. of Sociology, FL State University, Tallahassee, FL 32306 (904-644-6416).

##### STUDENT AWARD

This award is given to an NCFR graduate student member who has demonstrated excellence as a student with high potential for contribution to the field of family studies.

Criteria for selection: 1) A student currently enrolled in a Graduate Program whose work shows promise of a significant contribution to family studies. It is not assumed that research projects or other work be completed at the time of nomination. 2) Membership in NCFR for at least two years. Qualified students who are nominated will receive instructions for supplying other supporting credentials including: a) three additional letters of recommendations; b) brief (1-3 page) statement defining an important problem they see in the field of family studies and outlining possible steps towards its solution; c) a brief (1-3 page) description or summary of a personal program, research project, publication which they have done that is representative of the quality of their work and area of interest.

Nominations should be sent to Norma Bond Burgess, PO Drawer C, Mississippi State University, Mississippi State, MS 39762 (601-325-2495).

#### STUDENT/NEW PROFESSIONAL SMALL GRANT AWARD SPONSORED BY THE FEMINISM AND FAMILY STUDIES SECTION

The Feminism and Family Studies Section is sponsoring a new award which recognizes a research proposal that makes an outstanding contribution to feminist scholarship. The "Outstanding Research Proposal from a Feminist Perspective Award" is open to graduate students and new professionals (with up to five years post-doctoral work). A \$500 award is made. Proposals will be evaluated for their potential contribution to feminist scholarship and use of feminist frameworks and

Applications should include: a) an abstract of 100 words or less; b) a five-page (maximum) proposal outlining the project's theoretical foundation, research methods, and potential contribution to feminist scholarship; and c) a half-page budget. Please submit FIVE copies of your application.

The Award will be presented at the 1990 NCFR annual conference. A summary of the recipient's research results will be published in the Feminism and Family Studies Section newsletter.

Mail application form and supporting materials to Polly Fassinger, Department of Sociology, Concordia College, Moorhead, MN 56560 (218-299-3549).

### NCFR AWARDS NOMINATION FORM

Instructions: Use one form for each person/organization you wish to nominate, and attach any additional documentation, credentials or materials which would support your nomination. Mail all materials to the chair designated for each award. Please duplicate this form and enclose with each separate nominee.

Deadline for Nominations For All Awards: April 15, 1990.

Name of Award for which you are nominating \_\_\_\_\_

Name of Nominee \_\_\_\_\_

Title \_\_\_\_\_  
(if student, indicate program and institution)

Address \_\_\_\_\_

Phone Number \_\_\_\_\_

Names of 3 additional persons to document nominee's qualifications:  
Name Address Phone

Signature of person nominating \_\_\_\_\_

Title and address of nominator \_\_\_\_\_

Phone number of nominator \_\_\_\_\_

# Candidates submit vitas

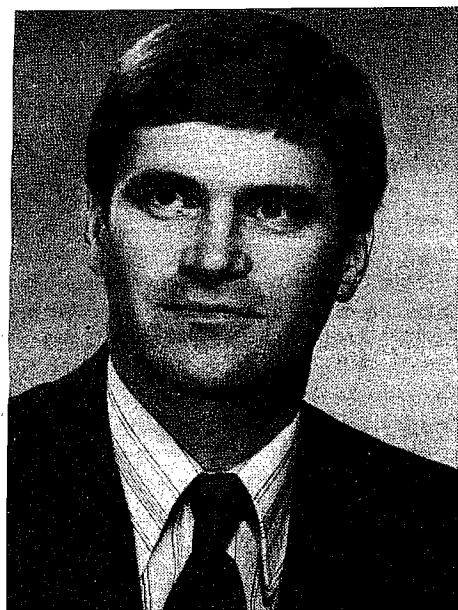
Here are biographical sketches for candidates for office in NCFR. In addition to races for national offices and the national nominating committee, elections are being held by the following Sections: Education and Enrichment, Ethnic Minorities, Family and Health, Family Discipline, Family Therapy, Feminism and Family Studies, and Research and Theory. Photos are included where candidates have submitted them.

Biographical data is included on the following points:

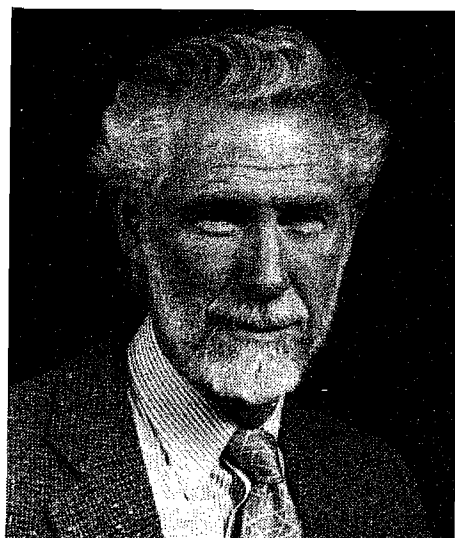
- (1) candidate's present professional position;
- (2) candidate's immediate past professional position;
- (3) past and present participation in NCFR activities;
- (4) past and present related activities;
- (5) publications -- books, chapters, articles.

Ballots will be sent by April 1, 1990 to active NCFR members. All ballots must be returned to NCFR headquarters with postmarks no later than May 1, 1990.

## President-elect

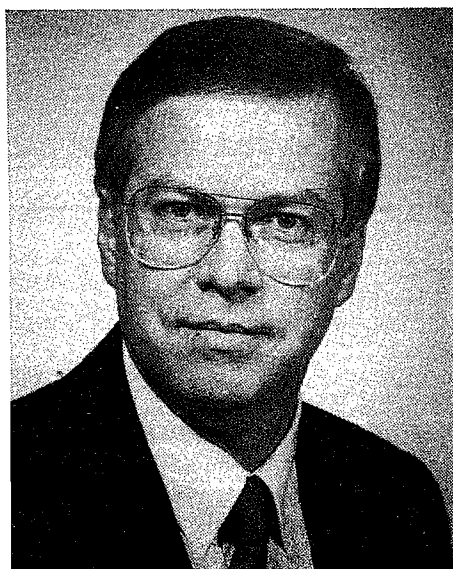


**Brent C. Miller, Ph.D.,** (1) Professor of Family and Human Development, UT State University. (2) Visiting scientist at Battelle Human Affairs Research Centers, Seattle, WA, and Demographic and Behavioral Sciences Branch, NICHD. (3) Program vice-president, publications vice-president; search committee for executive director; chair and secretary/treasurer of Research and Theory Section; chair of Reuben Hill award Committee; presenter at several annual conferences and participated in MN, Southeast, and UT Councils on Family Relations; past president of UT Council. (4) Reviewer for many journals and two federal agencies (National Institutes of Health and Office of Adolescent Pregnancy Programs); member of National Advisory Panel for Data Archive on Adolescent Pregnancy and Pregnancy Prevention; chair, National Advisory Panel, Family Data Archive produced by Sociometrics; member, American Sociological Association, Population Association of America, and Society for Research on Adolescence. (5) Author or editor of five books; author of 14 chapters in books; many articles in journals.



**Robert G. Ryder, Ph.D.,** (1) Professor of Family Studies, University of CT. (2) Dean, School of Family Studies, University of CT. (3) Numerous annual conference presentations and informal presentations; former associate editor, *NCFR Monograph Series*; president, CT Council on Family Relations. (4) Member, American Association for Marriage and Family Therapy; American Association of Sex Educators, Counselors and Therapists, American Psychological Association, Groves Conference on Marriage and the Family, International Federation for Parent Education, International Society for the Study of Personal Relationships, Sigma Xi, Phi Kappa Phi; Groves board of directors, program chair, president, corporate representative and board member; ISSPR advisory council; Family Process board of directors; Marriage Research Centre Academic Committee; Women's Studies advisory board, University of CT; Licensing and/or Certification and/or Fellow or Diplomat status as psychologist, marriage and family therapist, sex therapist; associate/advisory editorships, seven, in various publications (four currently). (5) Books, chapters, articles: 45 to 50 items on marriage, intimate relationships, therapy, and research methodology.

## Program VP

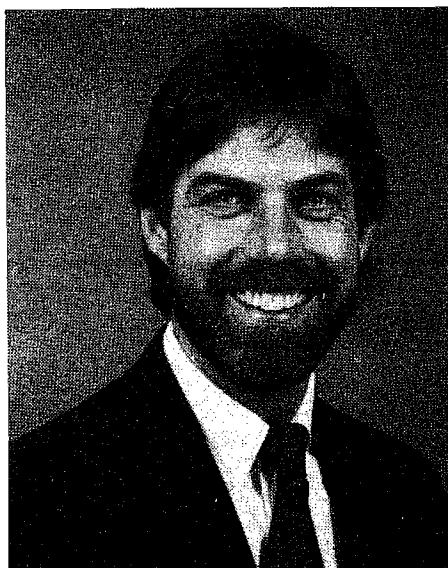


**William J. Doherty, Ph.D.,** (1) Associate professor, Family Social Science Dept., University of MN. (2) Associate professor, Dept. of Family Medicine, University of OK. (3) Chair, Family and Health Section; Nominating Committee. (4) AAMFT, chair, Research Committee Program Committee, Task Force on Family Therapy and the Health Care System. (5) Four books on families and health, including (with T. Campbell) *Families and Health*; articles on theory, health, divorce and other topics in a variety of journals in family science, psychology, and medicine.



**Patricia Voydanoff, Ph.D.,** (1) Director, Center for the Study of Family Development, University of Dayton. (2) Chair, Dept. of Family and Community Studies, Merrill-Palmer Institute. (3) Publications committee; Nominating committee; chair, workshop on Theory Construction and Research Methodology; chair, Reuben Hill Award Committee; Board member, OH Council on Family Relations and MI Council on Family Relations; editor, *Journal of Family Issues*; associate editor, *Journal of Marriage and the Family*. (4) Chair-elect, secretary, Family Section, American Sociological Association; chair, Family Division, Society for the Study of Social Problems; association editor, *Journal of Comparative Family Studies, Alternatives: Family and Economics Issues*; co-editor, special issues of *Family Perspective*. (5) *Work and Family Life*; editor, *Work and Family*; co-editor, *Families and Economic Distress*; author of over 30 articles and book chapters.

## Member VP



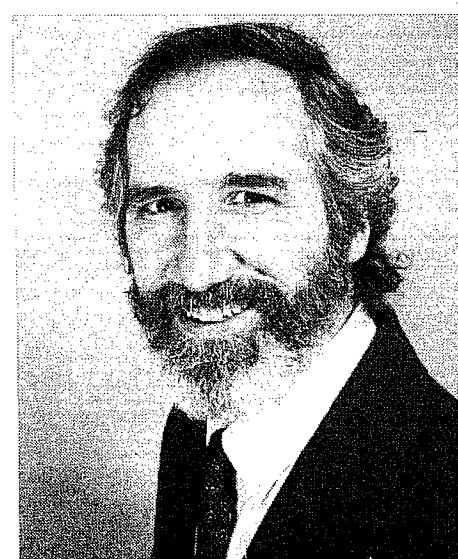
**Gary L. Bowen, Ph.D.,** (1) Associate professor and chair, Families and Children Specialization, School of Social Work, University of NC-Chapel Hill. (2) Senior research scientist, Organizational and Marketing Research Group, Westat, Rockville, MD. (3) Research chair, NC Family Life Council; editorial board, *Family Relations*; co-chair, post-conference on Military Youth; committee member, President's Commission on Structure of NCFR; Student Award Committee. (4) Fellow, Armed Forces and Society; member, National Association of Social Workers, National Academy of Certified Social Workers; consultant to federal and state governmental agencies, including DoD and HHS, business organizations and

community social service agencies; served in key technical and management positions on over 25 federal and state contracts over the last decade, totalling more than 5M. (5) Co-editor, *The Organization Family*; author of more than 100 research and professional publications, including articles in *Journal of Marriage and the Family*, *Family Relations*, *Journal of Family Issues*, *Family Perspective*, *Family Science Review*, and *Journal of Comparative Family Studies*.



**Patrick C. McKenry, Ph.D.,** (1) Professor, Dept. of Family Relations and Human Development, The OH State University. (2) Post-doctoral fellow, University of GA. (3) Chair, Continuing Education Certification committee; chair, Film Competition; member, Finance Committee; editorial board, *Family Relations*; chair, Nominating Committee, Family Discipline Section; chair Roundtables Section. (4) Member, American Sociological Association, American Public Health Association, and Groves Conference on Marriage and the Family. (5) Published over 50 refereed journal articles, several book chapters, and co-authored one book.

## Publications VP



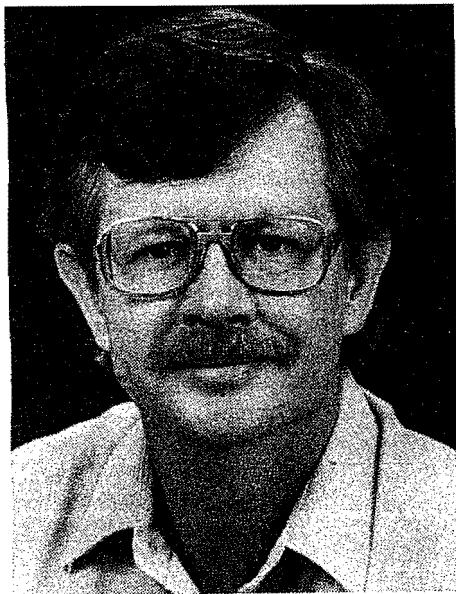
**Ralph LaRossa, Ph.D.,** (1) Associate professor, GA State University, Dept. of Sociology. (2) Assistant professor, GA State University, Dept. of Sociology. (3) Associate editor *Journal of Marriage and the Family*; chair, Theory Construction and Research Methodology Workshop; president, GA Council on Family Relations; board of directors, GA Council on Family Relations; Reuben Hill Award Committee. (4) Guest editor, *Journal of Contemporary Ethnography*;

*See Elections on page 16*



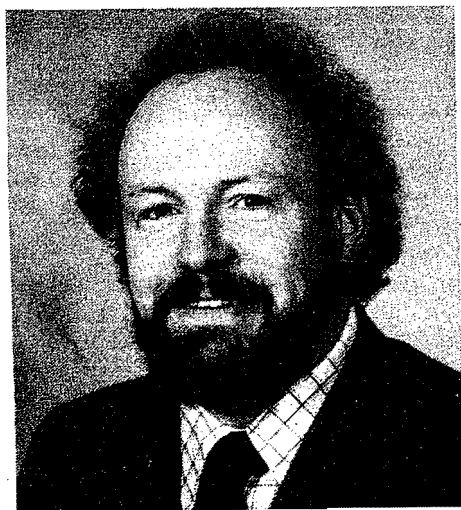
## Elections from page 15

review editor, *Symbolic Interaction*; member, American Sociological Association, Society for the Study of Symbolic Interaction, Southern Sociological Society; principal investigator, National Science Foundation research grant, "A Social History of Fatherhood in America." (5) Books: *Conflict and Power in Marriage*; co-author, *Transition to Parenthood*; *Family Case Studies*; *Becoming a Parent*; *Sourcebook of Family Theories and Methods* (forthcoming), co-editor; chapters in *The Social Cases of Husband-Wife Violence*; *Gender in Intimate Relationships*; *Family Systems in Medicine*; articles in *Journal of Marriage and the Family*, *Family Relations*, *Journal of Family Issues*, *Family Studies*, *Journal of Contemporary Ethnography*, *Journal of Sex Research*, *Journal of Communication*, *Sociology and Social Research*, *Teaching Sociology*, *Alternative Lifestyles*.



**Gary R. Lee, Ph.D.**, (1) Professor of Sociology, University of FL. (2) Professor of Sociology and rural sociologist, WA State University. (3) Chair, International Section; member, Board of Directors; member, Reuben Hill Award Committee; Association editor, *Journal of Marriage and the Family*; (4) Member, American Sociological Association; roundtable session organizer, ASA Family Section; associate editor of *Journal of Comparative Family Studies*, *Journal of Family Issues*, and *Research on Aging*; occasional reviewer for eight additional journals. (5) three books: *Family Systems in America*, *The Elderly in Rural Society*, *Family Structure and Interaction: A Comparative Analysis*; and author of 60 refereed journal articles and book chapters.

## Public policy VP



**Charles B. Hennon, Ph.D.**, (1) Professor, Family and Consumer Studies, and associate director of the Family and

Child Studies Center, Miami University, Oxford, OH. (2) Chair, Family and Consumer Sciences, Miami University. (3) Associate editor, *Family Relations*; Distinguished Service to Families Award Committee; Board of Directors; Chair, executive committee and vice-chair and committee member, Family Action Section; Annual Program Committee, 1987-89; Guest co-editor, *Family Relations* special issue on "Rural Families"; *Family Relations* editorial board and manuscript reviewer; Reviewer of Research and Theory Section papers for annual conference; poster session coordinator for annual conference Family Action Section; Awards Selection Committee, annual Filmstrip/Videotape/Slide Set Awards competition; annual conference workshop organizer, chair, and moderator; Task Force on Aging member; chair of Task Force on Business and Industry's Impact on the Family; presented papers at NCFR annual conference; faculty advisor to Miami University Council on Family Relations; newsletter editor, OH Council on Family Relations. (4) Editor, *Lifestyles: Family and Economic Issues*; member of Groves Conference on Marriage and the Family, American Council on Consumer Interest, American Home Economics Association; editorial board, *Home Economics Research Journal*; guest co-editor, *Lifestyles: A Journal of Changing Patterns*, special issue on "Diversity in the Lifestyles of Older People"; chair and organizer Symposium for Family Research/Child Development Section of American Home Economics Association, "The Impact of Employment on Families: Implications for Home Economists"; guest editor, *Alternative Lifestyles* special issue. (5) Co-editor of *Lifestyles of the Elderly: Diversity in Relationships, Health and Caregiving*; *Families in Rural America: Stress Adaptation and Revitalization*; chapters in seven books, including *Family Relationships in Later Life* and *Women's Retirement: Policy Implications of Recent Research*; over 20 other publications including articles in *Family Relations*, *Home Economics Research Journal*, *Journal of Consumer Affairs*, *Cybernetica*, and *Young Children*; several Cooperative Extension publications and newspaper articles.



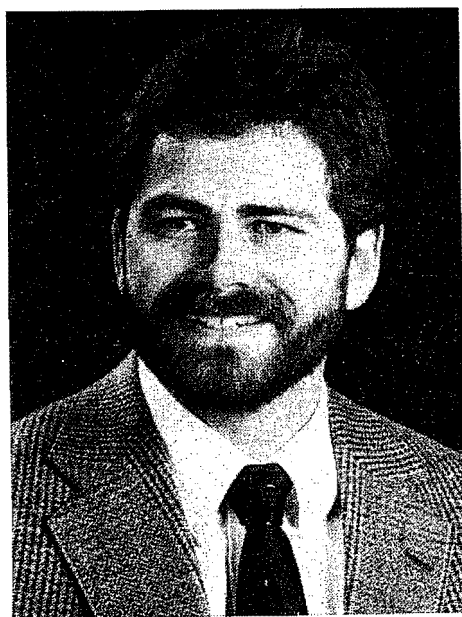
**Roger H. Rubin, Ph.D.**, (1) Associate professor of Family and Community Development and director, Family Research Center, University of MD. (2) Assistant professor, Child Development and Family Relations, University of TN. (3) Chair, Public Policy Committee; board of directors; publications board; chair Task Force on Income Maintenance; membership committee; founding member, Family Action Section; Regional Planning Commission; associate editor, *Family Relations*; local planning committee; Student Award Committee; president, DC Metropolitan Area Council on Family Relations; CDFR program committee; Nominating Committee. (4) Groves Conference on Marriage and the Family;

president, board member, secretary, associate program chair, program committee; American Association for Marriage and Family Therapy; public member, Commission on Supervision; editorial boards: *Marriage and Family Review* and *Journal of Lifestyles*. (5) Co-editor, *Contemporary and Alternative Lifestyles: Handbook on Research and Theory*; edited seven book chapters; over 12 professional articles.

## S/NP rep.



**D. Terri Heath, Ph.D.**, (Candidate A.B.D.), (1) doctoral student in the Dept. of Family Relations and Human Development, The OH State University and graduate associate for OH Cooperative Extension Service. (2) Family Therapist, Huckleberry House, Inc., Columbus, OH, and graduate teaching associate, The OH State University, Columbus. (3) NCFR Student Skills Exchange in 1988 and 1989. (4) Adjunct faculty, The OH State University, Capital University and University of WI-Stevens Point; Jane Shanely Graduate Fellow, The OH State University; Phi Kappa Phi Honor Society; Phi Upsilon Omnicron Honor Society; The OH State University Committee on Academic Misconduct; College of Human Ecology Committee on Academic Studies, The OH State University; medical social work in Marshfield, WI. (5) Co-author of a chapter in *Childhood Education*.



**Robert J. Volk, Ph.D.**, (1) Assistant professor of Family Medicine, University of OK. (2) Research associate, Dept. of Child Development and Family Studies, Purdue University. (3) 1988 NCFR Student of the Year Award recipient; reviewer for *Family Relations*. (4) Editorial Advisory Board, *Journal of Marital and Family Therapy*; member, Society for Research on Adolescence; student representative Graduate Committee, Dept. of Child Development and Family Studies, Purdue University. (5) Author of three articles published in *Family Relations*, 1989; numerous presentations at national conferences including NCFR and AAMFT.

## Nominating Comm.



**JoLynn Cunningham, Ph.D.**, (1) Professor, Dept. of Child and Family Studies, University of TN, Knoxville. (2) Assistant professor, College of Human Ecology, MI State University. (3) Religion and Family Life Section secretary; Research and Theory Section nominating committee, Reuben Hill Award committee; Employment services committee; TN Council on Family Relations, president, secretary. (4) American Home Economics Association, Leadership Development committee, Family Research Priority Issues Committee, Undergraduate commission, Certification Panel of Experts, Executive Administrators workshop planning committee; member, American Psychological Association, Groves Conference on Marriage and the Family, Home Economics Education Association, National Association for the Education of Young Children, National Passenger Safety Association, Society for Human Ecology, World Federation for Mental Health, World Future Society; Florence Crittenton Agency, Knoxville, board of directors, president, secretary; Mental Health Association of Knox County, board of directors, second vice-president, president-elect; forum member, 1970 White House Conference on Children. (5) Author of 13 books and chapters, 20 refereed articles and 20 research reports.



**David G. Fournier, Ph.D.**, (1) Associate professor and interim department head, Family Relations and Child Development, OK State University. (2) Assistant professor, Family Relations and Child Development, OK State University. (3) Program presenter and participant in annual conference; Research and Theory, Family Therapy, Education and Enrichment, Family Action, Family and Health Sections, member; Membership and Recruitment Committee member; 1978 runner-up in Student of the Year; contributor to Theory Construction and Research Methodology Workshop; OK Council on Family Relations, member, past-president and program chair; MO



Council and MN Council on Family Relations, past member. (4) American Association for Marriage and Family Therapy, member; member and past treasurer, OK Association for Marriage and Family Therapy; member, American Home Economics Association. (5) Author of over 60 scholarly paper presentations, chapters and articles; author/co-author of seven assessment instruments on marital, premarital and family diagnosis.



**Leonor Boulton Johnson, Ph.D.**, (1) Associate professor, AZ State University. (2) Senior research scientist at Westat, Inc., (3) Ethnic Minorities Section, chair, nomination committee, pictorial history, vice-chair, editor; board of directors; member, Publication committee, Membership committee, Public Policy committee; coordinator, Grant workshop; numerous annual conference presentations. (4) Ford Foundation Postdoctoral Minority Fellow; associate editor, *Family Relations*; reviewer, National Science Foundation, National Research Council, National Institute for Mental Health; consultant, Merit Systems Protection Board (Sexual Harassment in the Federal Workplace National Survey). The Urban Institute in Washington, DC; Nellum Associates (teenage pregnancy project); state researcher in FL on "Contribution of Black Women to America: 1976-1977." (5) Numerous articles/chapters which appear in *Journal of Marriage and the Family*, *Family Relations*, *Journal of Social Issues*, *The Review of Black Political Economy*, *Journal of Social and Behavioral Sciences*, *The Western Journal of Black Studies*, *Spectrum*, and *Journal of Police Science and Administration*; chapters in *Black Families*, *The Black Family: Essays and Studies*, *The Black Family: Contemporary Issues and Concerns*, and *The Sexually Oppressed*; conference proceedings in *Education for Living and Family and Kinship in Middle America and the Caribbean*.

**Joanne G. Keith, Ph.D.**, (1) Associate professor, Dept. of Family and Child Ecology, MI State University. (2) Assistant professor, Dept. of Family and Child Ecology, MI State University. (3) MI Council on Family Relations, member, treasurer. (4) College and departmental committees; Parent Education Committee for North Central 12 state region; reviewer 4-H PRK National Database; Research Planning Committee for North Central 12 State Region; Youth at Risk ad hoc committee for 4-H Youth Programming and Home Economics; Human Development and Family Life Education, MI Home Economics Education programming; Energy Steering Committee for Cooperative Extension service; advisory committee Eastern MI University Dept. of Human, Environmental and Consumer Resources; Parent Talk, advisory board Detroit Free Press; associate professor in graduate education for MI State University

in Okinawa, Japan. (5) book chapters, bulletins, technical reports, monographs; articles in *Adolescence*, *Human Ecology Bulletin*, *News and Views*, *Consumer Studies and Home Economics*, *Marriage and Family Review*, *Journal of Home Economics*; educational materials.

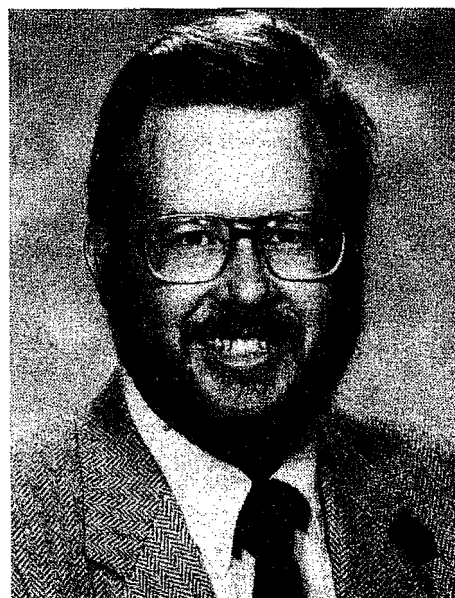


**Thomas Lasswell**. (1) Professor emeritus of Sociology, University of Southern CA. (2) Professor of Sociology, University of Southern CA; senior research consultant, CA Family Study Center. (3) IA Council on Family Relations, executive committee, vice-president. (4) Family Section, American Sociological Association, member, chair, nominating committee; Family Research committee, International Sociological Association, member; Certified sex educator, AASECT; AAMFT clinical member, board of directors, fellow; Groves conference, board of directors; International Childbirth Education Association, sustaining member; licensed marriage, family and child counselor, CA; Prof. James A. Peterson, Human Relations Center, University of Southern CA; Committee on Child Care, USC. (5) (with Marcia E. Lasswell) *Love, Marriage, Family; Marriage and the Family*; numerous articles or chapters, published tapes, radio and television presentations, seminars and workshops.

**John L. McAdoo, Ph.D.**, (1) Associate professor, School of Social Work and Community Planning, University of MD. (2) Associate professor, School of Social Work, Howard University. (3) Presented papers, chaired sessions at annual conferences; Ethnic Minorities nominating committee; Publications committee. (4) Groves Conference on Marriage and the Family; American Orthopsychiatric Association; Council on Social Work Education; editorial reviewer for *Journal of Child Development*; reviewed articles for *Journal of Public Health*; member, American Public Health Association, Gerontological Society; Empirical Black Psychologists; delegate to White House Conference on Families; participated in National Urban League summit. (5) Numerous articles, chapters, presentations; editor with Harriette McAdoo, *Black Children: Social, Educational and Parental Environments*; conference papers.

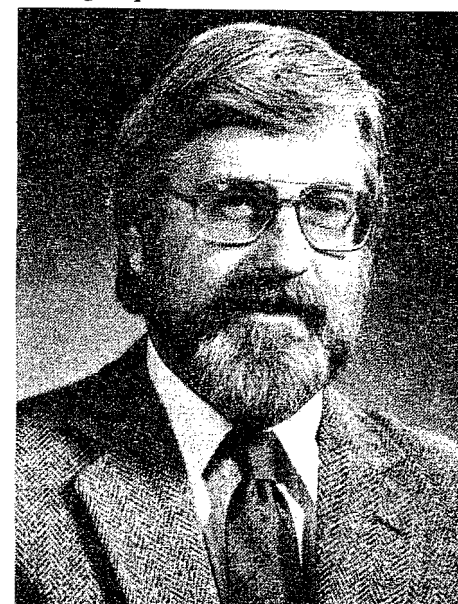


**J. Elizabeth Norrell, Ph.D.**, (1) Assistant professor of Psychology and Sociology, Erskine College. (2) Graduate student, University of GA. (3) Member, Religion and Family Life (also secretary), Family Discipline (also coordinator of Small Academic Programs Network and chair of Committee to develop Code of Ethics), Research and Theory and Feminism and Family Studies Sections; SE Council on Family Relations, program and research chair; SC Council on Family Relations, executive board member, program planning committee. (4) Member of and grant recipient from the Society for the Scientific Study of Religion; member of American Sociological Association, American Association of University Women; current research projects include cognitive and relational development in college students, clergy families, professional issues for family scientists (ethical issues, mentoring, work and family stress, maternity leave issues), and developing undergraduate research programs. (5) Guest co-editor of *Family Science Review* special issue on "Religion and the Family"; articles on Clergy Family Satisfaction, Pubertal and Cognitive Influences on Parent-Adolescent Interaction, and the Development of Quantitative Measure of Family from Self-Report of Family Members



**D. Kim Openshaw, Ph.D.**, (1) Associate professor of Family and Human Development and associate director of the Laboratory for Research on Adolescence, UT State University. (2) Assistant professor of Family and Human Development and director of the Marriage and Family Therapy program, UT State University. (3) UT State University representative to NCFR; president and membership chair, UT Council on Family Relations, program chair, UT annual meeting; chair, Family Therapy Section. (4) Licensed Certified Social Worker and licensed marriage and family therapist, UT; clinical member and approved supervisor, American Association of Marriage and Family Therapy; American Society of Clinical Hypnosis; associate editor, *Family Perspective*; journal referee, *Parenting Studies*; member, UT Association for Marriage and Family Therapy; National Marriage Study

Consortium; UT Society of Clinical Hypnosis; National Association of Social Workers; Society for Research in Child Development; committee on the formulation of a marriage and family therapy licensure exam, UT. (5) Five peer-refereed articles; six Extension articles; more than 80 speeches and/or workshop presentations on family and marriage topics.



**Ronald L. Pitzer**. (1) Extension family sociologist, MN Extension Service/Rural Sociology, University of MN. (2) Instructor in Family Studies, University of MN. (3) Board of directors; membership committee chair; program committee; Congress of Affiliated Councils chair; Education Section nominating committee chair, program committee; Family Action Section secretary/treasurer; MN Council on Family Relations, board of directors, annual conference chair, president; MN Council on Family Relations Distinguished Service to Families Award, 1977; associate editor, *Family Relations*; NCFR Family Resource and Referral Center Advisory committee. (4) MN Governor's Advisory Committee on Families; MN Governor's Task Force on Stress and Families; chair, MN Governor's Task Force on Work and Families; chair, Extension system national coordinating Committee on Child at Risk; service on numerous boards, advisory committees and task forces; frequent speaker to professional, leadership and citizen groups. (5) Author, *Preparing Children for the 21st Century*; co-author/editor: *Stress and Work*; co-editor, *Parent Education -- State of the Art*; producer/writer/host/narrator of three television series; editor/author of two regular newsletters: *Young Families and Family Childcare Newsletter*; author of dozens of articles, Extension Service fact sheets and curriculum modules, Experiment Station bulletins on parenting, family strengths, marriage, work and family, stress-crisis management.

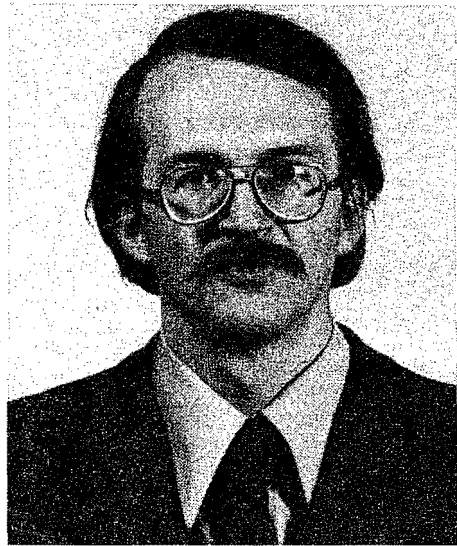


**Denise A. Skinner, Ph.D.**, (1) Professor of Family Science, University of WI-Stout, Menomonie. (2) Graduate

*See Election on page 18*

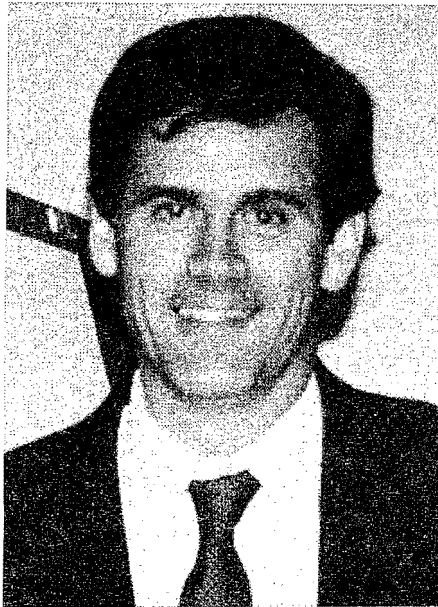
## Elections from page 17

research associate, Family Stress and Coping Project, University of MN. (3) Member, Family Action and Education and Enrichment Sections; presented papers at NCFR annual conference; presider and discussant at Family Action and Education and Enrichment sessions and past master lecture; reviewed papers for annual conference presentation; member, WI Council on Family Relations. (4) Member, Groves Conference on Marriage and the Family; American Home Economics Association (member and review editor of *Journal of Home Economics*); WI Home Economics Association, Research Section chair. (5) Author of numerous articles on dual career stress and coping and work/family issues in professional journals (*Family Relations*, *Home Economics Research Journal*); chapters in *Family Studies Review Yearbook*; *Work and the Family*, *Family Stress, Coping and Social Support*; *Annual editions: Marriage and the Family*; *Family Self and Society*; *Family Stress, Coping and Resources: Tools for Research, Education and Clinical Intervention*; *Coping with Life Crises: New Perspectives, Stress and the Family*.



**Kay Michael Troost, Ph.D.,** (1) Associate professor of Sociology, Anthropology and Social Work, and NC Japan Center Faculty Fellow, NC State University. (2) Assistant professor, NCSU. (3) President, NC Family Life Council; past associate editor, *Journal of Marriage and the Family*; past review, *International*, and *Theory and Method*; NC Council, past board member; guest editor, *The Council Record*; chair, research committee; chair, Child Policy ad hoc committee of Associated Councils; chair, legislative action, board member, SE Council on Family Relations; member, International, Feminism and Family Studies, Research and Theory Sections. (4) Initiated bill creating Modern Family Legislative Study Commission, NC; presented first testimony, ASA workshop: teaching marriage and family, 1989; familial presentations: AAS, ASA, Groves, IUSSP, JPN Sci Tea Assn, MassSS, MinnSS, Midwest S, NCSA, NSTA, SCFR; Fulbright: Japan, 1980; visiting researcher, Tokyo. (5) senior author of article in *Sourcebook on Family Theories and Methods*; article in IUSSP 1988 volume; other articles on family and learning, Japanese family and education, biosocial family, androgyny, international divorce, family problem solving, and family policy.

## Educ./Enrich. Chair



**Rob Lees, Ed. D.,** (1) President, Integra Counseling Group, Inc.; sessional lectural (part-time) Dept. of Counseling Psychology, University of British Columbia, Canada. (2) Private practice, Marriage and Family Therapy. (3) Past president, BC Council for the Family; chair, The Marriage Preparation Advisory Committee, BC Council for the Family. (4) Board member, BC Association for Marriage and Family Therapy; school trustee. (5) Author, *The Growth in Marriage Handbook*; produces a weekly radio feature, "Notebook," a commentary on contemporary family relations; president and editor of *The Changing Family*, a radio program.



**Judith A. Myers-Walls, Ph.D.,** (1) Associate professor and Extension specialist, Child Development, Purdue University. (2) -- (3) member of Education and Enrichment, Feminism and Family Studies and International Sections; IN Council on the Family, president, secretary, program chair; Affiliated Councils program chair; secretary-treasurer of Education and Enrichment Section, 1988-90. (4) National Association for the Education of Young Children, member; National Organization on Adolescent Pregnancy and Parenting; Society for Research in Child Development; Family Resource Coalition. (5) Co-author of two books, *Young Peacemakers Project Book* and *Peace Works*; author or co-author of 12 research articles or chapters, 17 Extension publications, six major teaching packages, and several videotapes and slide shows.

## Vice-chair



**Dave Brewer, M.A.,** (1) Program specialist, The Aring Institute for Strengthening Families/Beech Acres, Cincinnati, OH. (2) Child and family therapist/private practice in psychology. (3) Certified Family Life Educator; workshop and paper presentations at annual conferences; active in Education and Enrichment Section and Stepfamilies Focus Group. (4) Development and executive of family life education programs and support groups for families in transition, and training and development programs for the professionals who serve them; serve on local boards and committees, newsletter editor. (5) Speaker and workshop leader for hundreds of presentations to family members, students and professionals.



**Carol A. Darling, Ph.D.,** (1) Associate professor of Family and Child Sciences, Dept. of Family, Child and Consumer Sciences, FL State University. (2) Assistant professor of Home and Family Life, FL State University. (3) Nominating committee; committee to Develop the Standards and Criteria for Certification of Family Life Educators; Implementation Committee for Standards and Certification of Family Life Educators; Certification Review Committee for Certification of Family Life Educators; Certified Family Life Educator; Education and Enrichment Section, editor; Affiliated Councils nominating committee; co-adviser FL State University Council on Family Relations; several presentations at annual conferences; plenary speaker for LA NCFR/AHEA annual meeting; participant in MN, MI, FL and Southeast Councils. (4) American Home Economics Association; Groves Conference on Marriage and the Family; National Association for the Education of Young Children; and Society for the Scientific Study of Sex. (5) Author of over 30 research and professional publications on human sexuality, family life education, sex education, and parent-child interaction.

## Sec./Treas.



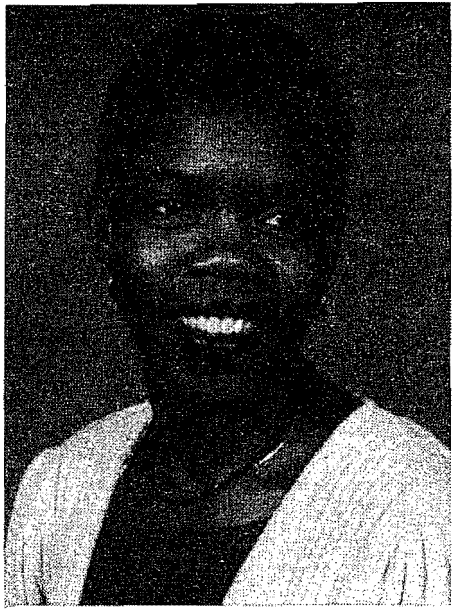
**Irene K. Lee, Ph.D.,** (1) Extension Family and Child Development Specialist, Cooperative Extension Service, University of AR, Pine Bluff. (2) -- (3) Co-chair, Planning Committees: Family Life Specialists annual meeting, NCFR annual conference; Certified Family Life Educator; Certification Review Committee of the Certified Family Life Educator Program. (4) American Home Economics Association: chair, Ethics Committee; membership committee; Contracts and Grants Committee; Liaison Committee, Family Relations/Child Development Section; national secretary, Family Relations/Child Development Section; Research Abstract Reviewer; juror, Moran Research Award; juror, New Achievers Award; member AR Home Economics Association, International Federation of Home Economics, American Vocational Association, American Family Society, Society for the Study of Social Problems, American Association for Higher Education, Groves Conference on Marriage and the Family. (5) Author of over 70 research and professional publications.

**Linda S. McConahey, Ph.D.,** (1) Private practice, marriage and family enrichment, South Boston, VA; and adjunct professor, Averett College and Southside Community College. (2) Director of Mental Health and Substance Abuse Services, Community Mental Health Center, South Boston, VA. (3) Certified Family Life Educator; chair of Marriage and Family Enrichment focus group; member of VA Council on Family Relations. (4) Association for Couples in Marriage Enrichment, board of directors, and co-president; member, American Psychological Association, American Association of Sex Educators and Therapists, American Association of Counseling and Development and American Association of Marriage and Family Therapists. (5) Author of numerous articles on marriage relationships and assessment inventories used in marriage enrichment.

**Active Members  
will receive  
their ballots  
in April.**



## Ethnic Minorities Chair-elect



**Edith A. Lewis, Ph.D.,** (1) Assistant professor, School of Social Work, University of MI. (2) Director of Social Services, RFDF-Orchard Hill, Fitchburg, WI. (3) Secretary/treasurer, Ethnic Minorities Section; Nominations committee, Feminism and Family Studies Section; member, Family Action Section; board of directors, MI Council on Family Relations. (3) National Association of Black Social Workers, member and past officer; National Center on Multi-Ethnic Study, co-founder and senior partner; Program on Conflict Management Alternatives, core faculty member. (5) Author of professional publications on families, women of color, and ethnic- and gender-sensitive practice.



**Fariyal Ross-Sheriff, Ph.D.,** (1) Associate professor, Social Work, Howard University, Washington, DC. (2) -- (3) Presenter at annual conference; chaired sessions; discussant; member, Ethnic Minorities, Religion and Family Life, Research and Theory Sections; member and chair of Marie Peters Award committee; participant in the DC NCFR group; secretary, Ethnic Minorities Section. (4) Council on Social Work Education, elected member to Asian American Social Work Educator's group and chaired Symposia; elected member of the House of Delegates, presented papers, chaired sessions on teenage pregnancy and parenting, Muslim families and adolescents, and displaced populations; member, National Association of Social Work, Society for Research in Child Development, Society for Research on Adolescence; board member in several organizations serving minority families and children; founder and co-director of Al-Ummah, a cultural, educational summer program for Muslim youth in America (program being replicated internationally in Britain, Canada, Portugal and France). (5) Articles or chapters in *Encyclopedia of Social Work*, *Muslim Families in North America*; co-author and co-editor of *Social Work Practice with Asian Americans* (forthcoming), *Problems Confronting Hispanic Youth: A Needs Assessment Survey*, *Mental*

Health and People of Color, and Teenage Parenting: A Teaching Guide.

## Sec./Treas.

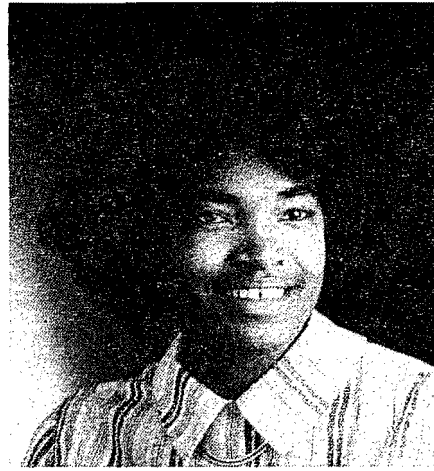


**Louise Bates Evans, Ph.D.,** (1) Director, Family and Children's Ministries, Christian Church (Disciples of Christ). (2) Assistant professor, Family Relations VA Polytechnic Institute and State University. (3) Secretary and charter member, Ethnic Minorities Section; member, IN Council on Family Relations, vice president and board member. (4) American Home Economics Association; National Council of Churches of Christ, Commission on Family Ministries and Human Sexuality, executive committee; Parenting for Peace and Justice, board of directors; Association of Couples for Marriage Enrichment. (5) Author of articles related to practice in life stage development, moral development in religious and parenting publications.



**Patricia M. Wilson, Ph.D.,** (1) Assistant professor, Family Resource and Human Development, AZ State University. (2) Research associate, College of Home Economics, OK State University. (3) Made several research presentations at NCFR annual conferences. (4) American Home Economics Association, member; section chair; Colleges and Universities State Association (AZ); advisor, Student Member Section. (5) Published in *Family Relations* and the *Home Economics Research Journal*.

## Member. chair



**Norma J. Burgess, Ph.D.,** (1) Assistant professor, sociology, MS State University. (2) Graduate student. (3) Member, Ethnic Minorities Section, Research and Theory Section; session organizer, presenter, presider, NCFR annual conference; Student/New professional representative, NCFR; member, SE Council on Family Relations, program chair, research section chair, newsletter editor. (4) Session organizer, presenter and discussant in family section, Southern Sociological Association and Midsouth Sociological Society, National Association for Ethnic Studies, program evaluation consultant for Teen Life Community Project, faculty mentor for incoming freshman students; MS Association for Women in Higher Education. (5) Principal investigator, three grants, National Science Foundation, "The Use of Films in Teaching Sociology of the Family," *Sociological Research Symposium Vol. 15*; article in *Journal of Family Issues*.



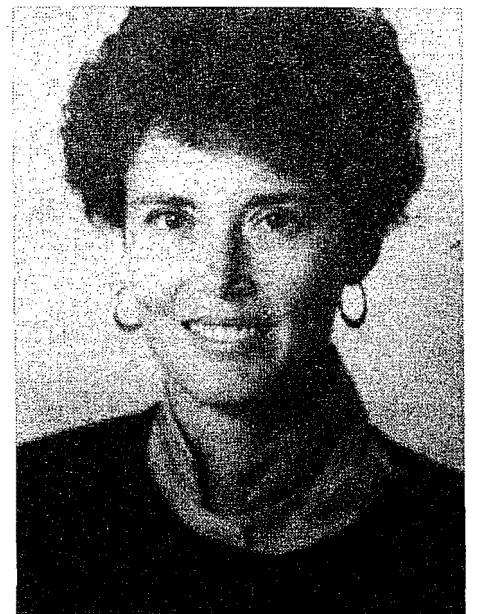
**Willie Melton, Ph.D.,** (1) Associate professor of Sociology, MI Technological University. (2) Senior research fellow, Institute for Social Research, Institute for Social Research, University of MI. (3) Ethnic Minorities Section nominations committee. (4) -- (5) Authored and co-authored several published research articles and reviews.

**The next  
deadline  
for REPORT  
is  
May 15, 1990**

## Family Health chair



**Sandra K. Burge, Ph.D.,** (1) Assistant professor of Family Practice, University of TX Health Science Center at San Antonio. (2) Post-doctoral Research Fellow in Family and Community Medicine, University of CA-San Francisco. (3) NCFR Student Award recipient, 1983; Family and Health Section newsletter editor; Feminism and Family Studies Section nominating committee; IN Council on Family Relations board of directors and membership chair. (4) Groves Conference on Marriage and the Family; Society of Behavioral Medicine; Association of Medical Education and Research in Substance Abuse; Society of Teachers of Family Medicine; Society for Traumatic Stress Studies; Program committee, North American Primary Care Research Group; *Lifestyles: Family and Economics Issues* editorial board. (5) Author of over 50 publications and presentation, including articles in *Journal of Marital and Family Therapy*; *Family Process*; *Family Practice Research Journal*; *Victimology*; *Journal of Traumatic Stress*; *Family Medicine*; *Journal of the American Medical Association*; and *Alcoholism: Clinical and Experimental Research*.



**Barbara A. Elliott, Ph.D.,** (1) Director of Behavioral Sciences and Research, Family Practice Residency, Duluth. (2) Assistant professor, Dept. of Behavioral Sciences, Medical School, University of MN-Duluth. (3) Family and Health section; co-editor, *Family Health News* (newsletter); member, Research and Theory, International, and Religion and Family Life Sections. (4) Kellogg National Fellow; UN delegate developing the Convention on the Rights of the Child, and the World Conference on Education for All; Hastings Center Visiting Scholar; Society for Teachers of

**See Elections  
on page 20**

## Elections, from page 19

**Family Medicine:** Family Task Force, International Task Force; **Family Practice Research Journal**, editorial reviewer. (5) Author of over 20 research and professional publications in the medical literature including articles on ethical issues, family issues in clinical practice, physician participation in health curricula, and cross-cultural issues in health education.

### Vice-chair

**Barbara B. Germino, Ph.D.,** (1) Associate professor, School of Nursing, University of NC at Chapel Hill. (2) Research and teaching assistant, University of WA (during doctoral study); assistant professor, School of Nursing, University of South FL. (3) Secretary-treasurer, Family and Health Section; member, Family and Health, Research and Theory Sections; Qualitative Family Research Network; presenter, discussant and moderator at NCFR conferences; **Family Relations** editorial board. (4) Current research and teaching are focused on family responses to chronic, life-threatening illness and to dying and death. Recently completed a research project funded by NIH, National Center for Nursing Research, which involved both instrument development and descriptive work focused on the concerns and communication patterns of adult families in which there has been a recent cancer diagnosis. This is a part of an ongoing program of research in development of the Family Concerns Inventory, an instrument designed to measure family members concerns and disclosure from multiple member perspectives. (5) Chapters in **Cancer Nursing, Living With Cancer**, and the **Proceedings of the First National Conference on Cancer Nursing Research**.

**Marcia Gruis Killien, Ph.D., R.N.** (1) Associate professor, Dept. of Parent and Child Nursing, University of WA. (2) Not available. (3) Member, Research and Theory and Family and Health Sections. (4) Principal investigator of "Returning to Work: Impact on Postpartum Mothers' Health," a five-year grant funded by the National Center for Nursing Research; member, review boards for **Health Care of Women International, Research in Nursing and Health, JOGNN, Family Relations**, and **Journal of Public Health HN Nursing**. (5) --.

### Sec./Treas.



**Nancy Trygar Artinian, Ph.D.,** (1) Assistant professor of Nursing, Wayne State University, Detroit, MI. (2) Assistant professor of Nursing, Mercy College of Detroit. (3) Family Health Section member; Family Health Section abstract review committee; moderator at two annual conferences. (4) Member, Midwest Nursing Research Society

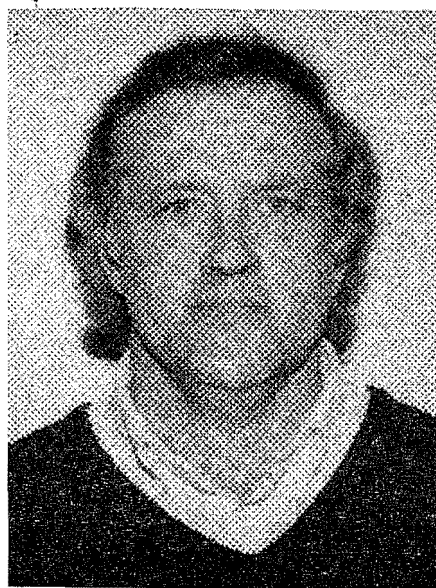
Family Health Section and Secretary of Stress Research Section; member, American Association of Critical Care Nurses; active member of Nursing Research Section, American Heart Association of MI. (5) Articles in **Focus on Critical Care, Family Theory in Nursing: An Anthology, Professional Nursing Practice: A Conceptual Approach**, and **Nursing Science Quarterly**.

**Perri J. Bomar, Ph.D.,** (1) Associate professor of Family Health Nursing, University of San Diego, Philip Y. Hahn School of Nursing. (2) Associate professor of Family Health Nursing, University of Akron, College of Nursing. (3) Co-chair, NCFR Nursing Focus Group; member, Family and Health and Ethnic Minorities Sections; abstracts reviewer for Family and Health and Ethnic Minorities Sections. (4) Member, American Nurses Association; past second vice-president CA, Region 2; member, CNA Awards Committee; past president, Sigma Theta Tau, Zeta Mu Chapter; member, Phi Delta Gamma; Reviewer for **Journal of Professional Nursing**. (5) Editor, **Nurses and Family Health Promotion: Concepts, Assessment, and Interventions**; author in the area of family health promotion.



**Kathleen R. Gilbert, Ph.D.,** (1) Assistant professor of Applied Health Science, IN University, Bloomington. (2) Visiting instructor, Dept. of Psychiatry, University of TX Health Science Center, San Antonio. (3) IN Council on Family Relations, board of directors and secretary; TX Council on Family Relations, registration chair for annual meeting. (4) Society for the Study of Social Problems, member; International Society for the Study of Social Problems, member; Teaching Family Science Conference and workshop co-chair; Advisory Board member, **Annual Editions: Marriage and Family**, Guilford, CT; Dushkin Publishing Group, Inc; ad hoc reviewer for special issue of **Lifestyles** on family health and economics. (5) Forthcoming, with L. Smart, **Couple Bereavement Following Pregnancy Loss and Infant Death**, and chapter in **Death Studies**.

### Family Discipline Chair



**Gary W. Peterson** (1) Professor and chair of Dept. of Family Resources and Human Development, AZ State University. (2) Associate professor of Child and Family Studies, University of TN, Knoxville. (3) Member of Reuben Hill Award Committee; Nominating Committee; secretary-treasurer Family Discipline Section; president, TN Council on Family Relations. (4) Presenter at annual conference; recipient of faculty Excellence Award for Teaching, Research and Service, College of Human Ecology, Knoxville, TN, 1985. (5) Author of 40 research and scholarly publications.

**Suzanne K. Steinmetz, Ph.D.,** (1) Professor of Sociology, Director of Family Research Institute, IN University, Indianapolis. (2) Professor of Individual and Family Studies, University of DE. (3) Chair, Theory and Methodology Workshop; active in establishment of Family Discipline Section; associate editor of **Family Science Review**; editorial board of **Sourcebook of Family Theory and Methods: A Contextual Approach**, sponsored by NCFR Theory and Methods Workshops. (4) Program chair, annual meeting of Society for the Study of Social Problems; president, DE Academy of Sciences; president, Sigma Xi, University of DE; chair, family section, ad hoc Minority Committee; editor, **Family Forum**, newsletter of the Family Section of ASA; delegate to Surgeon General's Task Force on Health Promotion and aging; Surgeon General's Task Force of Violence and the Public Health; NATO-sponsored conference of "Determinants and Origins of Aggressive Behavior;" editor of Praeger special series "Changing Issues in the Family." (5) Author/editor: **Marriage and Family Reality: Historical and Contemporary Analysis; Duty Bound: Elder Abuse and Family Care; Family and Support Systems Across the Life Span; Handbook of Marriage and Family; Behind Closed Doors: Violence in American Families; Cycle of Violence: Assertive, Aggressive and Abusive Family Interaction; Violence in the Family**; over 60 chapter, articles and other publications.

### Vice/chair



**Kenneth V. Hardy, Ph.D.,** (1) Executive director, Commission on Accreditation for Marriage and Family Therapy Education, AAMFT. (2) Assistant professor of Individual and Family Studies, University of DE; adjunct faculty, Family and Child Development, VA Tech University, Falls Church. (3) Member of Family Therapy and Ethnic Minorities Sections. (4) Member and fellow, AAMFT; former member of AAMFT Continuing Education Committee; former member, AAMFT Task Force on Ethnic Minority Concerns; editorial board **Family Science Review**; editorial board, **Journal of Marital and Family Therapy, Contemporary Family Therapy, and Journal of Psychotherapy and the Family**. (5) Article in **Journal of Marriage and the Family** forthcoming, **Psychotherapy and the Family**, and **Journal of Marital and Family Therapy**.

**James J. Ponzetti, Jr., Ph.D.,** (1) Assistant professor, Family Studies Program, Central WA University, Ellensburg. (2) Assistant professor, Marriage and Family, University of NM. (3) President, NM Council on Family Relations; presented papers at an NCFR annual conference. (4) International Society for the Study of Personal Relationships; National Organization on Adolescent Pregnancy and Parenting; American Society on Aging; Gerontological Society of America; American Association for Marriage and Family Therapy; President, NM Association for Marriage and Family Therapy; board of directors, NMAMFT; member, WA Home Economics Association Research Committee; board of directors, Hospice for Kittitas County; advisory council, HY2 Teen Pregnancy and Parenting Program, Kittitas County Action Council; member, High Education Task Force on child welfare issues and initiatives, Dept. of Social and Health Services, State of WA; counsel and trainer, PREPARE-ENRICH Inc. (5) Articles in professional journals such as **Family Relations, Journal of Gerontological Social Work, Lifestyles: Family and Economic Issues, Child Study Journal, Journal of Divorce, Child Care Quarterly, Family Therapy**; manuscripts in preparation.

**Remember:  
Ballots  
will be mailed  
to you in  
April  
and must be  
returned by  
May 1, 1990.**

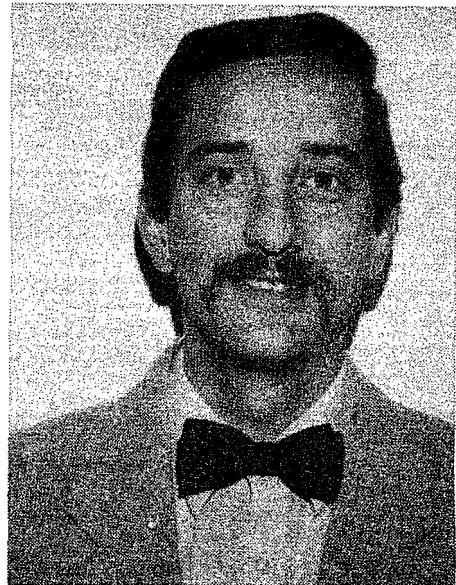
**Call  
NCFR Headquarters  
at  
612-781-9331  
if you have  
membership  
questions.**



## Sec./Treas.



**Colleen I. Murray, Ph.D.,** (1) Assistant professor, Human Development and Family Studies, University of NV, Reno. (2) Assistant professor, Family Studies, University of Akron. (3) Member, executive board, OH Council on Family Relations; member, nominating committee, Feminism and Family Studies Section; presented papers at NCFR annual conferences; presider and discussant; moderator, Theory Construction and Research Methodology pre-conference. (4) Program planning committee, Groves Conference on Marriage and the Family; member, Society for Research on Adolescence, SRCD, AHEA; reviewer, *Journal of Adolescent Research*; director, Nevada Balancing Work and Family project. (5) Author of a dozen research and professional publications.



**Stephan M. Wilson, Ph.D.,** (1) Associate professor, Dept. of Family and Child Development, Northern VA Graduate Center, VA Tech, Falls Church. (2) Associate professor, Dept. of Home Economics, IL State University. (3) Co-chair, Rural Families Focus Group; past board member of TN Council on Family Relations; secretary/treasurer, ID/MT Council on Family Relations; co-conference chair for IMCFR annual meeting. (4) Member, NCFR, VCFR, AHEA, SRA. (5) Author of 15 research and professional publications.

## Family Therapy Chair

**Dr. Russell Crane, Ph.D., CFLE,** (1) Associate Professor and director of the Marriage and Family Therapy programs, Dept. of Family Sciences, Brigham Young University. (2) Assistant professor of Marriage and Family Therapy, Dept. of Human Development and Family Studies, TX Tech University. (3) Chair, membership committee and member of Advisory Committee, Family Therapy Section;

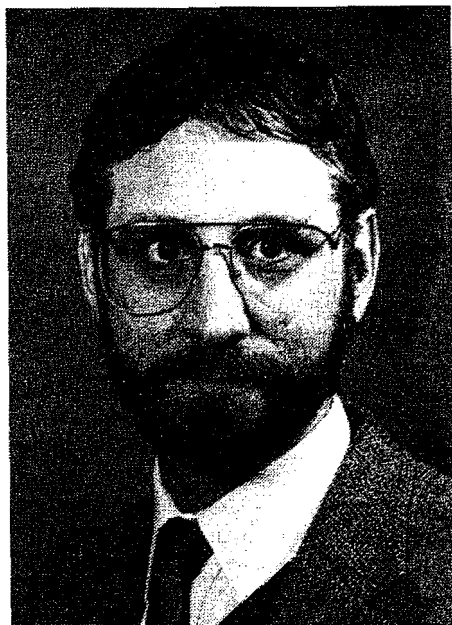
member, membership committee; member, board of directors, UT Council on Family Relations. (4) Fellow, approved supervisor and clinical member, American Association for Marriage and Family Therapy; director, Enuresis Treatment program, Charter Canyon Hospital; consultant, Child and Adolescent Treatment programs, UT Valley Regional Medical Center; director of Family Therapy Training, Child and Adolescent Psychiatric Unit, UT Valley Regional Medical Center. (5) Author of articles in *Journal of Marriage and the Family*, *Journal of Marital and Family Therapy*, *The American Journal of Family Therapy*, *Family Process* and others; research interests are in marital and family therapy, assessment, and divorce.



**Janice Linn, M.A.,** (1) Private practice, Lubbock, TX and instructor TX Tech University. (2) Private practice, Coudersport, PA; consultant, Guidance Center, Bradford, PA. (3) Vice-chair, Family Therapy Section; secretary/treasurer, Family Therapy Section; assisted with Working Conference on Assessment of Family Therapy. (4) Clinical member, American Association of Marriage and Family Therapy; recipient of University Summer Research Grant to study inequity in relationships. (5) --.

## Vice-chair

**Eugenia (Jennie) Barr, Ph.D.,** (1) Core faculty, CA School of Professional Psychology, Los Angeles. (2) Assistant professor, TX Woman's University, Denton. (3) Board of directors: Student/New Professional representation; publications committee; membership committee; public policy committee; Research and Theory student/new professional representative chair, Student Award; Association of Councils; Nominating committee, TX Council on Family Relations; reviewer, *Family Relations*; member, Family Therapy, Research and Theory and Family and Health Sections; Guilford Student/New Professional book award committee. (4) Clinical member, American Association for Marriage and Family Therapy; consultant, Hispanic Family Intervention Grant (Simon Foundation). (5) Several manuscripts in progress.



**David W. Wright, Ph.D.,** (1) Assistant professor, Human Development and Family Studies, KS State University. (2) Doctoral student, University of GA. (3) Past president, KS Council on Family Relations; nominating committee for KS Council; CA Association for Marriage and Family Therapy, Orange County chapter board of directors. (4) Member, AAMFT, KAMFT, KCFR. (5) Author of numerous professional publications.

## Sec./Treas.



**Jeffrey H. Larson, Ph.D.,** (1) Associate Clinical professor, Counseling and Development Center and Dept. of Family Sciences, Brigham Young University. (2) Director, Marriage and Family Therapy program, MT State University, and Extension Family Life Educator, IA State University; taught in the Dept. of Health and Human Development at MSU. (3) Program presenter at annual conference; section discussant, presider and research proposal evaluator; served on committee on role and scope of Family Therapy Section; research presentation evaluator for Family Therapy Section annual meeting; UT Council on Family Relations, board of directors; past president, ID-MT Council on Family Relations, and public relations chair, IA Council on Family Relations; member, editorial board, *Family Relations*. (4) Licensed marriage and family therapist, UT; approved supervisor and clinical member, AAMFT; Certified Family Life Educator; newsletter editor for UT Council and UAMFT newsletter; practicing marriage and family therapist; member AAMFT Accreditation site visitation team, Commission on Accreditation. (5) Over a dozen research publications in *Journal of Marriage and the Family*, *Family Relations*, *American Journal of Family Therapy*, *Journal of Family Issues*; book: *Effective Stepparenting*, and book chapter in *Building Family Strengths*.



**Karen S. Wampler, Ph.D.,** (1) Professor and director, Marriage and Family Therapy Program, Dept. of Human Development and Family Studies, TX Tech University. (2) Associate professor and director, Marriage and Family Therapy Program, Dept. of Child and Family Development, University of GA. (3) Vice-chair, Family Therapy Section; Reuben Hill Award committee; editorial board, *Journal of Marriage and the Family*; presented at annual conference. (4) Chair, MFT Training Directors Organizing committee; approved supervisor, AAMFT; AAMFT research committee; president-elect GA Association for Marriage and Family Therapy; treasurer, GA Association for Marriage and Family Therapy; editorial board, *Journal of Marriage and Family Therapy*. (5) Articles in *Marriage and Family Sourcebook* and *Family Process*.

## Member-at-large

**Scot M. Allgood, Ph.D.,** (1) Assistant professor, *Marriage and Family Therapy*, Dept. of Family and Child Development, Auburn University, AL. (2) -- (3) AL Council on Family Relations, Research Committee chair; Young Professional representative for Family Therapy Section. (4) American Association for Marital and Family Therapy, clinical member; Student/Associate member board of directors, UT Association for Marital and Family Therapy; newsletter editor, AL Association for Marital and Family Therapy. (5) Published one chapter and three articles on therapy related topics (intimacy, assessment and interventions).

**Larry Dumka, Ph.D.,** (1) Assistant professor of Child and Family Development, director of Clinical Training Marriage and Family Therapy Program, University of GA. (2) Director, The Marriage Project, Vancouver, BC, Canada. (3) -- (4) Clinical member, American Association for Marriage and Family Therapy; member, Executive Committee, Pre-professional Certificate Program in Marriage and Family Therapy, University of GA; member, program committee, NE Chapter, GA Association for Marriage and Family Therapy; member, American Psychological Association. (5) Titles include: *Choosing a Graduate Program in Marriage and Family Therapy*; *strengthening the Pleasure Bond: Using Sexual Enhancement as an Adjunct in Marital Therapy*; *Tools for the Trade: Using Assessment Instruments in Family Therapy*; *HOPES: A New Instrument to Measure the Role of Client Expectancies in Therapy Process and Outcome*.

**See Elections  
on page 22**



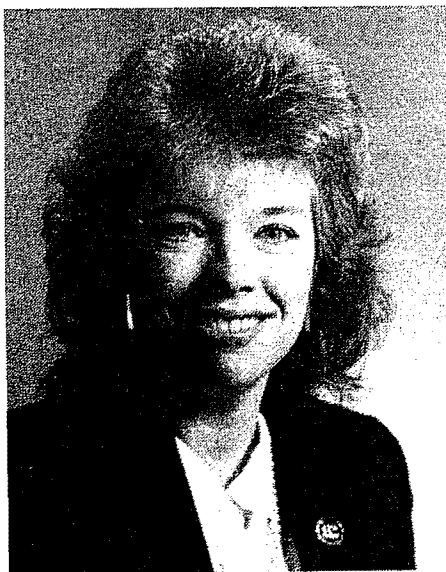
## Feminism/Family Chair

**Leigh A. Leslie, Ph.D.,** (1) Associate professor of Family and Community Development, University of MD. (2) Assistant professor of Counseling Psychology, Fordham University. (3) Awards committee and nominating committee, Feminism and Family Studies Section; treasurer, DC Council on Family Relations; advisory council, clinical section. (4) Editorial board, *Journal of Family Issues*; advisory board, *Journal of Social and Personal Relationships*; American Association of Marriage and Family Therapy, Task Force on Health Care and Family. (5) Author of over 20 publications.



**Constance L. Shehan, Ph.D.,** (1) Associate professor, Dept. of Sociology, University of FL. (2) Assistant professor, Dept. of Sociology, University of FL. (3) FL Council on Family Relations, past secretary; Reuben Hill Award Committee, member; Feminism and Family Studies and Research and Theory Sections, member; presenter, presider, discussant at annual conference. (4) Associate editor, *Journal of Family Issues*, *Family Relations*, *Journal of Marriage and the Family*. (5) Articles in *Journal of Marriage and the Family*, *Family Relations*, *Journal of Family Issues*, *Parenting Studies*, *Sex Roles*, *American Sociological Review*, *Work and Occupations*, *Sociological quarterly*, *Journal of Gerontology*, *Research on Aging*, and others; recent chapters in *Handbook of Family Measurement Techniques*, *Source-book on Family Theories and Methods*, and *Aging Parents and Adult Children*.

## Vice-chair



**Katherine R. Allen, Ph.D.,** (1) Associate professor of Family and Child Development, VA Tech. (2) Associate professor of Family and Consumer Studies, TX Woman's University. (3) Feminism and Family Studies Section

newsletter editor; Qualitative Family Research Network Steering committee; NCFR nominating committee, fundraising committee, publications committee; *Family Relations* editorial board; *Journal of Marriage and the Family* reviewer; Certified Family Life Educator; 1984 NCFR Student of the Year; NCFR Student/New Professional representative; Research and Theory, FFS Section member; TX Council on Family Relations vice-president for programs; SE Council on Family Relations member; Reuben Hill award committee. (4) Educational Gerontology editorial board; Gerontological Society; Groves; National Women's Studies Association member; VA Tech Women's Studies advisory council. (5) Articles in *Journal of Marriage and the Family*, *Family Relations*, *Educational Gerontology*, *Journal of Applied Gerontology*, *Marriage and Family Review*, *Current Perspectives on Aging and the Life Cycle*, *Single Women/Family Ties: Life Histories of Older Women*.



**Margaret Crosbie-Burnett, Ph.D.,** (1) Associate professor of Counseling Psychology and Counselor Education, University of WI-Madison. (2) Part-time faculty member, School of Business, San Jose State University. (3) Co-chair, Focus Group on Remarriage and Stepfamilies; editorial board, *Family Relations*. (4) Chair of Equity Action committee for two years, School of Education, University of WI-Madison; licensed psychologist, WI; president, WI Association of Counselor Education and Supervision; post-secondary vice-president, WI School Counselors' Association; member, American Psychological Association; member, American Orthopsychiatric Association; member, Association of Family and Conciliation Courts; member, American Association of Counseling and Development. (5) Author of numerous data-based and conceptual articles and book chapters, the themes of which are stepfamily adjustment and the interface between schools and non-traditional families.

## Sec./Treas.



**Polly A. Fassinger, Ph.D.,** (1) Assistant professor of Sociology,

Concordia College, Moorhead, MN. (2) Instructor of Sociology, Concordia College. (3) Feminism and Family Studies Section, Student/New Professional representative, Awards Committee chair; ND Council on Family Relations; film reviewer for annual National Filmstrip Competition. (4) American Sociological Association, member, Family Studies Section and Sex and Gender Section; Sociologists for Women in Society; National Women's Studies Association; Midwest Sociological Society. (5) Articles on chapters in *Family Relationshipism, Gender in Intimate Relationship* (recipient of the first annual Dissertation Paper Award of the ASA, Section on Sex and Gender, 1987), and *Day In, Day Out: Women's Lives in North Dakota*.

## Newsletter ed.



**Kristine M. Baber, Ph.D.,** (1) Assistant professor of Family Studies, and Women's Studies, University of NH. (2) -- (3) Feminism and Family Studies and Research and Theory Sections, member. (4) American Psychological Association Division 35, Sociologists for Women in Society, and Society for the Scientific Study of Sex, member. (5) Publications regarding fertility decisions, delayed childbearing; book in progress on women's experiences in families.

## S/NP rep.



**Vicki L. Loyer-Carlson, Ph.D.,** (1) Assistant professor of Family Studies, WV University, Morgantown. (2) Lecturer, San Francisco State University. (3) Annual conference presenter, presider, recorder; program committee member, Feminism and Family Studies; Mentoring Committee member, Feminism and Family Studies. (4) American Psychological Association; Society for the Study of Social Problems; American Home Economics Association; advisor, Student chapter of the American Home Economics Association, San Francisco State University; Research and Theory program committee member, CA

Home Economics Association. (5) Article in *Perceptual and Motor Skills*; Ph.D. dissertation; work in progress with colleagues, "Stability in Casual-Dating Relationships."



**Maureen Perry-Jenkins, Ph.D.,** (1) Assistant professor of Family Studies, Division of Human Development and Family Studies, University of IL. (2) Graduate student at PA State University. (3) Member of Feminism and Family Studies award committee; 1987 NCFR Student of the Year. (4) Society for Research in Child Development and International Society for the Study of Personal Relationships, member. (5) Articles in *Journal of Family Issues* and *Family Relations*; co-authored articles in *Developmental Psychology*, *Child Development*, *Journal of Family Issues*, and *Basic and Applied Social Psychology*.

**Suzanna Smith, Ph.D.,** (1) Assistant professor, Human Development, Home Economics Dept., University of FL, Gainesville. (2) Training coordinator, Sexual Abuse Intervention Project, Southeastern Network for Runaway Services. (3) Co-chair, Student Volunteers committee, 1987 annual meeting program committee; member of Feminism and Family Studies, International and Family Action Sections; FFS paper reviewer; SE Council on Family Relations, first vice-president, long-range planning committee; FL Council on Family Relations. (4) GA Association of Social Workers, student representative; University of FL, chair, Women in Agriculture Fellowship Selection committee; Fulbright Selection committee, member; ERA-Athens, GA, chair, membership committee; Amnesty International, Athens, chair, membership committee; Rape Crisis Center, Wheeling, WV, board member. (5) Book chapter, articles, and paper presentation, particularly on women and agricultural development and women and unemployment; Extension publications on work and family stress and coping.



**Marlana Studer, Ph.D.,** (1) Assistant professor of Sociology, Tulane University, New Orleans, LA. (2) Doctoral student, University of MI, Ann Arbor. (3) Co-chair, 1989 Hospitality reception, Feminism and Family Studies Section; roundtable presenter, 1989. (4) American Sociological Association and Family Section and Society for Research on Child Development, member; affiliate, MI Program on Child Development and Social Policy. (5) Publications in the areas of adolescent religiosity and contraceptive usage in *Journal of Marriage and the Family*; and battered women, *International Journal of Women's Studies*.

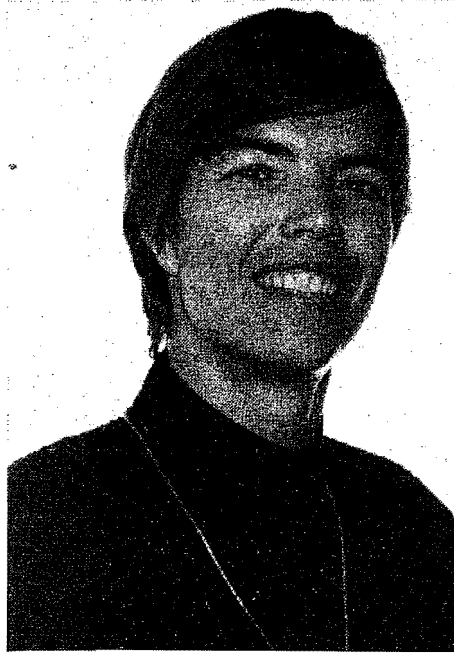
## Research/Theory Reuben Hill Chair-elect



**Elizabeth Menaghan, Ph.D.** (1) Associate professor of Sociology, adjunct associate professor, Center for Human Resource Research, The OH State University. (2) Assistant professor, the OH State University. (3) Member, Reuben Hill Award committee; vice-chair, Research and Theory Section; member, Feminism and Family Studies Nominations Committee; member, Nominations Committee; member, Publications Committee. (4) Organizer, Family Sociology Roundtables, ASA; member, Family Sociology Nominations Committee. (5) Research in social stress, family relations, and human development; work and family; coping. Publications in *Journal of Marriage and the Family*, *Journal of Family Issues*, *Journal of Health and Social Behavior* and *Social Forces*.

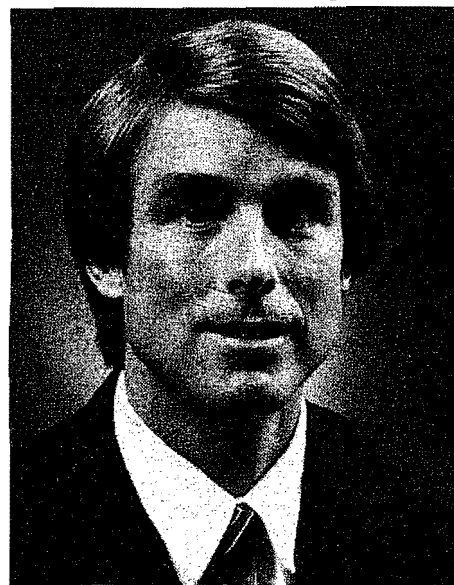
**Roy H. Rodgers, Ph.D.** (1) Professor of Family Science, University of British Columbia, Canada. (2) Professor of Sociology, University of OR. (3) Research and Theory Section; International Section; Family Action Section; Remarriage and Stepparenting Focus Group; Executive Committee; MI Council on Family Relations, president and board member; Hill Award Committee, member; Research and Theory Section chair; editor of Articles in Brief in *Journal of Marriage and the Family*; associate editor of *Family Relations*; pre-conference Theory and Methods workshop participation; Pacific Northwest Council on Family Relations board of directors. (4) Editorial board, *Sociometry*; *Canadian Journal of Sociology* associate editor; *Canadian Journal of Home Economics* editorial panel of Research Section; Social Sciences and Humanities Research Council of Canada, Grants Review Panel, Family and Socialization of Children. (5) Co-author with Constance Ahrons of *Divorced Families*; *Family Interaction and Transaction*; chapters and articles on family disruptions, family development, theory, family stress.

## Nominating Committee



**Becky L. Glass, Ph.D.** (1) Assistant professor of Sociology, SUNY at Geneseo. (2) Visiting professor of Sociology, NC State University. (3) Research and Theory Section conference paper reviewer; Reuben Hill Award Committee; International Liaison committee; reviewer for *Journal of Marriage and the Family*; member, Research and Theory and Feminism and Family Studies Sections. (4) American Sociological Association, *Sociologists for Women in Society*, editorial board of *Work and Occupations*, reviewer for five additional journals. (5) Articles in *Journal of Marriage and the Family*, *Southern Women*, *Women's Studies International Forum*, *Sociological Spectrum*, and *Journal of Family Issues*.

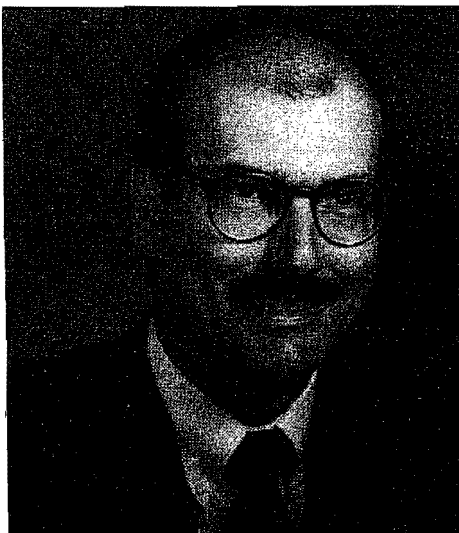
**Michael P. Johnson, Ph.D.** (1) Associate professor, sociology and Women's Studies, PA State. (2) -- (3) Member, Feminism and Family Studies and Research and Theory Sections; presented papers, discussant, organized sessions for NCFR conference; active in Theory and Methods Pre-conference Workshop; member, Reuben Hill Award Committee. (4) Member, American Sociological Association, National Women's Studies Association, *Sociologists for Women in Society*. (5) Published in *Journal of Marriage and the Family*, *Journal of Personality and Social Psychology*, *Quarterly, Sociological Quarterly* on (a) commitment to close relationships and (b) networks and close relationships.



**Stephen Jorgensen, Ph.D.** (1) Professor, Dept. of Human Development and Family Studies and associate dean, College of Home Economics, TX Tech University. (2) Associate professor, division of Child Development and Family Relations, University of AZ. (3) Member, Research and Theory Section; Family Life Council of Greater Tucson, member; member, TX Council on

Family Relations; member, NCFR Committee on Standards and Certification, 1980-84; member of Family Life Education Certification Review Committee, and chair, 1987-88; member, Publications Committee; regular contributor of research papers at annual NCFR conference, plus regular service discussant and session chair roles. (4) Chair, search committee for *Family Relations* editor; workshop on NCFR Family Life Educator Certification, presented at the annual meeting of the American Home Economics Association; associate editor, *Journal of Marriage and the Family*; associate editor, *Family Relations*; associate editor of four other scholarly journals, and currently editor of *Home Economics Research Journal*; member, American Sociological Association and Population Association of America. (5) Author of over 60 published articles and papers presented at professional meetings; author of two marriage and family texts; Research and applied work focuses on the quality and stability of marriage; adolescent fertility-related behavior; sex and family life education; and the fertility regulation of Mexican American women.

**Sally A. Lloyd, Ph.D.** (1) Associate professor of Family and Consumer Studies, University of UT. (2) Ph.D. student, Human Development and Family Studies, OR State University. (3) Reuben Hill Awards Committee; Nominating committee for Research and Theory Section; reviewer of program abstracts for Feminism and Family Studies Section; editorial board, *Family Relations*; board of directors, UT Council on Family Relations; board of directors and newsletter editor, OR Council on Family Relations. (4) Member, American Home Economics Society, International Society for the Study of Personal Relationships, IA Network on Personal Relationships; UT State Domestic Violence Advisory Board; editorial board, *Journal of Social and Personal Relationships*. (5) Author of over 25 journal articles and chapters on courtship, conflict and violence.



**Jay A. Mancini, Ph.D.** (1) Professor and head, Dept. of Family and Child Development, VA Tech. (2) Professor of Family Studies, VA Tech. (3) Board of directors, Young Professional representative; Affiliated Councils, Young Professional representative; associate editor, *Journal of Marriage and the Family*; editorial board, *Family Relations*. (4) Consultant on family and human development, USDI National Park Service, U.S. Dept. of the Air Force, Educational Guidance Institute. (5) Author of *Aging Parents and Adult Children*; articles in *Journal of Marriage and the Family*, *Research on Aging*, *Educational and Psychological Measurement*; chapters in *Families in Later Life*, *Family Systems in Medicine*, *Independent Aging*; author over 40 research and professional publications.

**Barbara H. Settles, Ph.D.** (1) Professor of Family Studies, University of DE, Newark. (2) Assistant professor of Home Economics and Sociology, Otterbein College, OH. (3) Research and Theory Section chair; program vice president; Board of Directors; presented papers at Annual conferences; secretary and vice-chair, Family Action Section; Task Force on Aging; Public Relations committee. (4) Groves Conference on Marriage and the Family; president-elect, membership chair, board member, local arrangements co-chair, program committee, program chair, Awards committee chair; American Sociological Association, section officer, chapter president, collective bargaining team; American Association of University Professors. (5) *Cost and Quality of Foster Family Care with Culley and Van Nome*; articles in professional journals.

## Violence theme of upcoming journal issue

A special collection on Violence and Sexual Aggression in Courtship will appear in a future issue of *Family Relations*. The submission deadline is **June 1, 1990** and the collection will appear in mid to late 1991.

Especially welcome will be empirical studies of how relationship issues, social networks, or sociocultural factors affect courtship aggression. Theoretical, conceptual or qualitative pieces are also appropriate.

Less interesting would be studies of the incidence of aggression, personality factors, or demographics. Please note that all manuscripts must contain implications for intervention, in keeping with the applied nature of *Family Relations*.

Please send manuscripts to Dr. Timothy Brubaker, editor, *Family Relations*, Family and Child Studies Center, Miami University, Oxford, OH 45056. Note in the cover letter that the manuscript is for the special collection on courtship aggression. All manuscripts will be subject to blind review.

You need not wait until June 1 to submit, as manuscripts will be reviewed as they are received. The final decision concerning publication will be made by the editor of *Family Relations*.

The special collection will consist of approximately 7 to 10 articles.

For more information, contact Dr. Sally Lloyd, Family and Consumer Studies, University of UT, Salt Lake City, UT 84112; 801-581-7491; or Dr. Rodney Cate, Child Consumer and Family Studies, WA State University, Pullman, WA 99164; 609-335-3773.

## Meetings

June 6-9, 1990 -- Gallaudet University: "Substance Abuse and Recovery: Empowerment of Deaf Persons," training in specialized areas. Contact: Jackee Roth Kinner, conference coordinator, Gallaudet University Regional Center, 800 Florida Ave. NW, Washington, DC 20002-3625; 202-651-5351.

June 11-17, 1990 -- Gallaudet University: "Preparing for Tomorrow," how to start and expand a successful community service organization. Contact Jackie Roth Kinner, Gallaudet University, 800 Florida Ave. NW, Washington, DC 20002-3625; 202-651-5351.



# From Space Needle to museums

Convention delegates will quickly discover that Seattle offers a wide range of attractions and activities. Since downtown is pedestrian-scale, many of the attractions and activities - shopping, Pike Place Market, Pioneer Square, the Waterfront - are within easy walking distance of the convention center and major convention hotels.

Several separate interest areas lie just beyond the downtown core. To the north, just 90 seconds by monorail, is the 605-foot Space Needle, Seattle's distinctive landmark with its revolving restaurant.

The Seattle Center, the city's 74-acre urban park, a legacy of the 1962 World's Fair, lies at the base of the Space Needle. The center features Center House with its 50 shops and restaurants, the Northwest Craft Center, the Children's Museum, Seattle Art Museum Pavilion and the

Pacific Science Center with its hands-on science displays and wide-screen theater. Most of the city's major cultural events - opera, theater, symphony, ballet - also take place at the center.

The Pike Place Market, one of the last authentic farmer's markets in the country, has been called the "soul" of Seattle and is one of the city's top attractions. Colorful stalls are filled with mountains of fresh fruit, produce, fish and shellfish. Shops sell spices, flowers, meats, cheeses, wines, arts and crafts and a host of other items. Visitors can arrange to have fresh salmon packed in ice for shipment home. There are several excellent restaurants in the market with views of Elliott Bay.

Just downhill from Pike Place, the Waterfront stretches for a mile-and-a-half between Pier 52 and Pier 70. Vintage

trolleys whisk passengers along the waterfront, or you can stroll past import shops, seafood restaurants, the city's fireboats, the aquarium with its underwater viewing dome and piers where the big green-and-white automobile ferries depart for Bremerton and Bainbridge Island. Sightseeing tour boats of the harbor depart from Piers 56 and 57.

Pioneer Square, at the south end of downtown, is the city's historic district. Here, in an area about 30 blocks square, handsome old sandstone and brick buildings have been preserved and renovated to house boutiques, art galleries, bookstores, coffee houses, restaurants and offices. The entire district is on the National Register of Historic sites and it contains four National Historic Landmarks. The Seattle unit of Klondike Gold Rush National Historic Park has a

gold rush museum and interpretive programs. Underground Tours leads you beneath the streets for a fascinating look at relics from Seattle prior to the disastrous fire of 1889 that destroyed the town.

The Seattle Art Museum in Volunteer Park crowns the hill just to the east of downtown and houses an outstanding collection of Oriental art and jade. A tour of the museum could be a prelude to a shopping tour to the adjacent Broadway district.

About 45 minutes east of Seattle by interstate is Salish Lodge, an elegant restaurant and luxury hotel that perches on the rim of 268-foot Snoqualmie Falls. The lodge features an enormous country-style brunch. A vintage steam train pulls excursions over several miles of track near the lodge. A tour and wine-tasting at Chateau Ste. Michelle and Columbia wineries in Woodinville, would be an attractive addition to this tour. Stop by Gilman Village, on the return trip, and browse through numerous specialty stores.

Newest attraction in Seattle's visitor package is the Museum of Flight, located between downtown and Seattle-Tacoma International Airport. The museum with airplanes suspended from the ceiling in its glassed-in Great Gallery has been acclaimed by museum critics as one of the finest of its kind in the world. Its location makes it easy to include in a day on which departures or arrivals are scheduled at Sea-Tac Airport. Just beyond the museum, Longacres racetrack offers a complete program of thoroughbred racing.

## Restaurants

There are some 300 restaurants in downtown Seattle and 500 spread throughout the entire metropolitan area. Although the city's eating establishments offer of a full spectrum of international cuisines, Seattle has been known historically for its superb seafood and, in recent years, as the capital of the Northwest cuisine that has won so many accolades from the national press. Its fortunate location on salt-water with a mild maritime climate suitable for producing the finest fruits and vegetables translates into award-winning cuisine for the visitor. Local seafood specialties that delight the gourmand are several varieties of salmon, oysters, Dungeness crab, clams and halibut. Seattle's large Asian community results in a real diversity of Chinese, Japanese, Vietnamese, Filipino, Korean, Thai and East Indian restaurants.

## Culture and Entertainment

Seattle is especially strong in performing arts. There are more equity acting companies in Seattle than anywhere outside of New York City. In the immediate Puget Sound area there are 35 dance, 120 musical and 45 theater groups. The Seattle Symphony offers a series of 12 concerts and five Friday evening Pops concerts from September through May. The First Chamber Dance Company, consisting of seven soloists and principals from the American Ballet Theatre, City center, Joffrey Ballet, New York City Ballet and San Francisco Ballet, offers performances year around, as does the Pacific Northwest Ballet.

## Meeting

June 11 through August 24, 1990 -- Atlanta, Chicago, Dallas, San Diego, Washington, D.C. and Boston; five-day sessions with speakers Sol Gordon, Peggy Brick, Allen Mendler, Nancy Abbey, and Sharon Scott on Adolescent Life Skills in the 1990s. Contact ETR association Associates, PO Box 1830, Santa Cruz, CA 95061-1830.

## NCFR Membership Application



Name \_\_\_\_\_ Address \_\_\_\_\_  
City \_\_\_\_\_ State/Province \_\_\_\_\_ Zip/Postal Code \_\_\_\_\_  
Home Phone (\_\_\_\_) \_\_\_\_\_ Business Phone (\_\_\_\_) \_\_\_\_\_

### MEMBERSHIP TYPE:

|                                                                            | U.S.  | British Columbia<br>Canada** | Foreign &<br>Other Canada** |                |
|----------------------------------------------------------------------------|-------|------------------------------|-----------------------------|----------------|
| Receive both Journals                                                      |       |                              |                             |                |
| Individual                                                                 | \$ 80 | \$ 87                        | \$ 85                       | \$ _____       |
| Student                                                                    | 45    | 52                           | 50                          | \$ _____       |
| Organization                                                               | 110   | 117                          | 115                         | \$ _____       |
| 2nd Family Member*                                                         | 50    | 50                           | 50                          | \$ _____       |
| *2nd Family Members do not receive Journal copies; spouses receive copies. |       |                              |                             | TOTAL \$ _____ |

### CHOOSE THESE MEMBERSHIP TYPES ONLY IF YOU ARE RETIRED OR EMPLOYED PART-TIME:

Receive choice of one Journal: ☐ Journal of Marriage and the Family or ☐ Family Relations

|                                        | U.S.  | British Columbia<br>Canada** | Foreign &<br>Other Canada** |                |
|----------------------------------------|-------|------------------------------|-----------------------------|----------------|
| Choose one:                            |       |                              |                             |                |
| Retired                                | \$ 50 | \$ 59                        | \$ 55                       | \$ _____       |
| Employed part-time                     | 50    | 59                           | 55                          | \$ _____       |
| Second Journal at reduced cost of \$30 |       |                              |                             | Total \$ _____ |

**SECTION MEMBERSHIP:** (Cost is \$5 per section, \$3 per section for student members.) It is highly recommended that you choose membership in at least one section.

- |                                                 |                                            |                                                    |
|-------------------------------------------------|--------------------------------------------|----------------------------------------------------|
| <input type="checkbox"/> Family Therapy         | <input type="checkbox"/> International     | <input type="checkbox"/> Religion & Family Life    |
| <input type="checkbox"/> Education & Enrichment | <input type="checkbox"/> Ethnic Minorities | <input type="checkbox"/> Family Discipline         |
| <input type="checkbox"/> Family Action          | <input type="checkbox"/> Family & Health   | <input type="checkbox"/> Feminism & Family Studies |
| <input type="checkbox"/> Research & Theory      |                                            |                                                    |

TOTAL FOR SECTIONS \$ \_\_\_\_\_

Residents of Virginia, Maryland and DC may choose to have their affiliated council dues to (check one):  
DC ☐ Maryland ☐ Virginia ☐

**CONTRIBUTION:** (All contributions are tax deductible as allowed by law.)

Enclosed is my voluntary gift: \$200 ☐ \$100 ☐ \$50 ☐ Other \$ \_\_\_\_\_

Apply my gift to \_\_\_\_\_ general fund \_\_\_\_\_  
special fund name \_\_\_\_\_

CONTRIBUTION TOTAL \$ \_\_\_\_\_

Payment by: Check ☐ VISA/MasterCard ☐

**TOTAL AMOUNT ENCLOSED** \$ \_\_\_\_\_  
(Add total of all boxed areas)

VISA/MasterCard Number \_\_\_\_\_ Exp. Date \_\_\_\_\_  
(I agree to pay 7% service charge)

Signature \_\_\_\_\_ Date \_\_\_\_\_  
(required for credit cards only)

\*\*Foreign and Canadian orders: U.S. funds drawn on U.S. banks only \*Affiliate Council Membership available in this province

Please return form to: National Council on Family Relations,  
3989 Central Ave. N.E., Suite 550, Minneapolis, MN 55421  
Phone 612-781-9331 FAX 612-781-9348

1990 NL