

National Council on Family Relations

report

Volume 36 Number 1

March 1991

The family...where the future touches now.'

Wilson to address poverty issues at meeting

William Julius Wilson, this year's Evelyn Duvall Distinguished Lecturer, will deliver his address Tuesday, November 19, during NCFR's annual conference in Denver, CO. His topic is "Urban Poverty, Joblessness, and Social Isolation: Challenges to the Inner-City Ghetto Family."

He is editor of *The Ghetto Underclass: Social Science Perspectives* and has authored or co-authored many articles and book chapters.

He currently directs a \$2.8 million study on Poverty, Joblessness and Family Structure in the Inner City funded by a consortium of foundations including Ford, Rockefeller, Carnegie, Joyce, William T. Grant, Spencer, Lloyd A. Fry, and the Woods Charitable Fund. He is a Lucy Flower University professor of sociology and public policy and director of the Study of Urban Inequality and Public Policy at the University of Chicago.

Dr. Wilson has written several books including *The Truly Disadvantaged: The Inner City, The Underclass, and Public Policy*, which was selected by the editors of *The New York Times Book Review* as one of the 16 best books published in 1987. The volume also was one of the winners of *The Washington Monthly's* 18th annual Book Award, received the North Central Sociological Association's Scholarly Achievement Award, and was the winner of the Society for the Study of Social Problems's C. Wright Mills Award.

The Truly Disadvantaged "far surpasses other attempts to explore" the development of the underclass according to Robert Greenstein. Emmett D. Carson noted in the May/June, 1990, issue of *Foundation News* that Dr. Wilson "argues



William Julius Wilson

that a relevant explanation of Black poverty is the entry of a substantial number of Blacks into the labor force at an inopportune time. His book, *The Truly Disadvantaged*...suggests that because of historic discrimination that slotted Blacks into certain occupations, Blacks were disproportionately affected by the economic downturn in the Seventies.

"Simply put, as industries laid off only recently hired Black workers, Black men without jobs provided little economic stability for Black women who had access to public welfare. In addition, as better-off Blacks pursued emerging opportunities outside of the inner city, poor Blacks were left without the benefit and example of middleclass Blacks' work ethic and social values as well as their social institutions, e.g., schools and churches.

"This social isolation of poor Blacks fostered an environment in which dysfunctional behavior, e.g., welfare

dependency, sporadic employment, etc., became the acceptable norm in many inner-city neighborhoods. Wilson concludes that only more employment opportunities, particularly for Black males, will create the necessary environment in which those Blacks for whom the American dream is perhaps more aptly described as a daily nightmare can escape poverty."

Dr. Wilson also has written *Power, Racism, and Privilege: Race Relations in Theoretical and Sociohistorical Perspectives* and *The Declining Significance of Race: Blacks and Changing American Institutions* which received the American Sociological Association's Sydney S. Spivack Award in intergroup relations.

Dr. Wilson has been a Fellow at the Center for the Advanced Study in the Behavioral Sciences at Stanford University and held the French-American

Foundation's American Studies Chair at the Ecole des Hautes en Sciences Sociales in Paris.

He is a MacArthur Prize Fellow, a Fellow of the American Academy of Arts and Sciences, a Fellow of the American Association for the Advancement of Science, past president of both the American Sociological Association and the Sociological Research Association. He delivered the 1988 Godkin Lectures at Harvard University's Kennedy School of Government.

He earned his doctorate in sociology from WA State University in 1966. He has received honorary doctorates from Columbia College in Chicago, Loyola College in MD, Mt. Holyoke College, and the universities at Long Island, Santa Clara, Marquette, DePaul, and Amherst. In 1988 he was awarded the Regents Distinguished Alumnus Award at WA State.

Inside...

Free search time	page 3
Conference news	page 5
Classified ads	pages 8-9
Candidates' vitas	pages 10-15
Awards forms.....	page 16
Section news	pages 18-20

17 contribute donations

The following persons and organizations contributed gifts to NCFR from November 15 to December 31, 1990. Their generosity furthers NCFR's purposes and activities.

Contributions are tax deductible according to law, and may be made to a general donation fund or to several special funds. For more information contact Mary Jo Czaplowski at NCFR headquarters, 612-781-9331.

Barbara B. Germino, Chapel Hill, NC; Robert G. Ryder, Storrs, CT; University of MD, College Park, MD; and Holly Latty-Mann, Columbia, SC, non-restricted account.

Shirley Hanson, Portland OR, to the Fred Bozett Memorial Fund.

Nelwyn Moore, San Marcos, TX; Greenwood Publishing Group, Inc., Westport, CT; Jessie Bernard, Washington, DC; Jake Thiessen, Grantham, PA; Matilda White Riley, Bethesda, MD; Paul Vaughn CFLE, Madison Lake, MN; Edith Lewis, Ann Arbor, MI; Eileen Polonko, Norfolk, VA; Jacqueline Polonko, Norfolk, VA; McCune Foundation, Newbury Park, CA; University of IL, Urbana, IL; and Michael Johnson, University Park, PA; all to Jessie Bernard Endowment fund.

Watch for your survey!

A survey of NCFR members will be conducted in early May. The primary purpose of the activity is to help the NCFR Board of Directors and headquarters staff respond effectively to the needs and interests of NCFR's diversified professional membership.

The results of the survey will be presented to the Board of Directors during the 1991 annual conference in November. Members also will be given the opportunity to review the findings during the conference.

When you receive your survey, please give it priority. Your response will help ensure that NCFR remains a viable and responsive organization to its members.

Gary L. Bowen
NCFR Membership vice president

Non-Profit Organization
U.S. Postage
PAID
Cambridge, MN 55008
Permit No. 30

NCFR
3989 Central Ave. N.E.
Suite #550
Minneapolis, MN 55421
TIME DATED MATERIAL
Please Deliver by
April 1, 1991

The mission of NCFR: think about it



Lynda Henley Walters
1990-91 President

At the end of my column in the December, 1990, issue of **REPORT**, I reported that at the Spring Board meeting, we will be discussing the mission of NCFR. Our Constitution and by-laws contain a statement of purpose, but no mission statement. There is a difference between the two. Our purpose is found in Article II. You may not have your Constitution and by-laws handy, so let me refresh your memory:

Article II Purpose

SECTION 1

The NCFR shall be a non-profit educational and professional organization, incorporated in the State of Illinois, and shall have perpetual existence.

SECTION 2

The objectives of the NCFR are to provide opportunities for individuals, organized groups, and agencies interested in family life to: 1) plan and act together on concerns relevant to all forms of marriage and family relationships; 2) establish professional standards; 3) promote and coordinate efforts in education and therapy; 4) encourage research; 5) disseminate information; and 6) further effective social action to strengthen family well-being.

The mission should be reflected clearly in the statement of purpose, and the mission statement should serve as a guide for the development of objectives. Our mission and objectives should be consistent with each other. We need a statement of our mission that is visionary and that reflects the uniqueness of the NCFR.

As you might guess, I have been thinking a lot about our mission lately. Probably because I have been thinking about it, recently I have seen numerous references to the importance of mission. For example, in a periodical called **Association Management**, the 50 qualities that distinguish a first class

association, according to association executives, were listed (Myers, 1991, p. 56). The first quality was *"Has a clear and specific understanding of why it exists and what it is trying to accomplish, a clear vision of where it wants to go, and a system that evaluates and adjusts that understanding on a periodic basis. All members and relevant others clearly understand that mission."*

The second quality was *"Has a compelling vision of the future that is shared by members and staff. It knows what it wants to be in the next 5-10 years and anticipates and prepares for future trends."* Most of the other 48 qualities mentioned could not be maintained in an organization without the first two.

A related issue I have been thinking about is the developmental trajectory of a volunteer organization of professionals like the NCFR. When the Stevens Group, our consultants for the Strategic Plan, met with the Board in November, 1989, they explained that organizations like ours all follow a similar developmental pattern. In the beginning, members are zealous about the reasons they have come together. They are not necessarily all alike in terms of occupation, etc., but they are homogeneous in their commitment to a mission. They give substantially of their time, energy, and financial resources; and, as a result, the organization flourishes and grows. More people join, professional staff are employed, and members enjoy their association and their success. This is exactly what has happened in the NCFR.

The NCFR was organized in April, 1938; eleven people were present. Originally called the National Conference on Family Relations, its purpose was "to advance the cultural values that are now principally secured through family relations for the advantage of the individual and the strength of the nation." In its first year, 200 people became members. Between 1938 and 1974, the NCFR membership grew to 5763. The Constitution and by-laws were revised at least three times. The executive secretary worked for years without pay, and when paid, it was a pittance. One member contributed 10 percent earned from all paid lectures and encouraged others to do so also. Another member made a sizable loan and donation in order to keep the organization afloat. There were problems during these years, but the problems obviously did not outweigh the value of the association - the membership kept growing.

Back to the developmental pattern of organizations like NCFR: As organizations reach their peak, the growth levels off. This period of stability may last for a number of years. (*In NCFR, membership was 5763 in 1974, 5035 in 1976, and 5176 in 1978; the years from 1974 to 1978 were peak years of membership.*) At this point, an organization is likely to be characterized by (a) greater heterogeneity in their understanding of the mission, and (b) increased expectation that the professional staff will carry the burden of supporting the organization. (*Indeed, our Executive Secretary became a fulltime position in 1970, and the number of paid staff increased throughout the 1970s and early 1980s.*) When growth has stopped and begins to decline (*in 1984 membership was 3922, and by 1987, 3663*), there is, usually only one direction left for the path of the trajectory; it is down. Notice I said usually.

Organizations are not static; they are dynamic, and they change. They can grow and flourish or they can wither and cease to exist. Once an organization begins the downward curve, it is virtually impossible

to reverse its direction, but it can regroup and begin another growth cycle. In fact, our membership has started to increase: It was at 3860 at the end of November, 1990. If the increase in membership does not continue, and if our developmental pattern follows that which has been experienced by other organizations like ours, we would conclude that we have two choices. We can wither and watch ourselves fall apart, or we can regroup and begin a new surge of growth. We cannot go back to what we were, but we can incorporate what we believe is important from the past as a viable part of the future. I would like for you to join me and the Board in our discussions of mission.

On a personal note, I confess to you: NCFR is integral to my professional identity. Many of my most valued professional colleagues - and friends - I see only at NCFR meetings. It is difficult for me to face the possibility that we might not be able to regroup and get on with our life. I find that I think nearly every day about how to capture the distinctiveness and the value of the NCFR in words. In trying to do that, I have recognized a couple of things that I think are important.

First, I have my own vision of the NCFR. But I have learned that there are many visions of who and what we are and can be, and they are not all the same as mine. I find myself wanting to listen to more and more points of view and to listen more intently than I ever have before. I want to be able to recognize the underlying assumptions that support our varied views. For some reason, I think that in those assumptions, there are some clues about our mission. Don't misunderstand me - I do not think our mission is a laundry list of views, and I do not necessarily think that all of the assumptions will ultimately contribute equally to an emergent mission. (I challenge you to have a mission and to be truly open to the visions of others.)

Second, I have realized, more than I have ever needed to before, the value of diversity of opinion. We do not always have to agree with each other - maybe we shouldn't. I love it that we all bring a uniqueness that enriches the whole. But what must we do to move forward? What is it we share that we can rally 'round; what is it that will move us arm-in-arm into the future? As I read our history, I am inspired by the commitment and the wisdom that has been and continues to be represented in our membership; I am confident of the potential we share.

As you think about our mission with me, let's try to avoid the obvious. Families are central to everything we do, and we are all committed to "families." But what is it that makes us want to get together once a year? What do we find at an NCFR meeting that we do not find at other meetings? There are a number of professional organizations that include family issues in their programming. Is the NCFR just another one of those? Is it a clone of another, perhaps larger, professional organization? What is it that makes the NCFR unique? What is the distinctive quality that keeps us coming back for more? Think about it.

In an article in the 1964 volume of JMF on the "Developmental Tasks of the NCFR - 1963-1988," Jessie Bernard discussed what she perceived to be the limitations and strengths of the NCFR. Among other things, she concluded, *"NCFR is, in contrast to an action group or a professional association, a council. The essential thing about a council is that it is educational, advisory in nature. Its members come together to think about problems, to teach one another, to learn from one another,"* and *"To meet the needs*

of the family today and tomorrow, NCFR members must never permit themselves to canonize or stereotype knowledge, to espouse a creed, to take a formal stand, or to discourage outrageous ideas; they must always welcome creativity no matter how brash it may seem. If or when NCFR thinks it has all the answers, if then when it ceases to examine values in a searching way, if or when it shrinks from controversy, it will have ceased to serve a useful function." That was in 1964; what would we say about the NCFR today?

At the beginning of this column, I mentioned that at the Spring Board meeting, we will be discussing a mission statement. The meeting is scheduled for April 20 and 21. Like me, you have probably already given this some thought. We now have a little more than one month to think more about what you believe does and should characterize the distinctive value of the NCFR. Think about it.

This is one of those things that we easily choose to put off until tomorrow. But tomorrow is nearly here. Write to me, to another Board member, or to the NCFR office in Minneapolis. Tell us what you think our mission should be, and be sure to give your reasons so that we can better understand your views.

In this last year, we have had more discussion of what the NCFR is and "should be" than I have ever heard before. I think it is healthy. It means that we can move forward as an organization of friends and colleagues who do not always agree, but who recognize that we share interests that override our disagreements. NCFR is worthy of our finest thinking, and I think that through such an effort we will regroup and create even greater meaning for our association with each other.

Think now. Write within a few weeks. It is up to us. We are the NCFR.
Lynda Henley Walters
NCFR President
Myers, E.M. (January, 1991). To be the best. *Association Management*, pp. 55-58

BUILDING FAMILY STRENGTHS FACILITATOR TRAINING

June 10-13, 1991

Denver, Colorado

\$395 (includes Materials/snacks)
2hrs. of Graduate Credit Available
from Adams State College

This dynamic workshop is designed to prepare professionals for certification as BFS facilitators.

You will gain powerful insights and tools for making positive changes in the lives of those with whom you live and work! Developed at the University of Nebraska; the program focuses on accessing and developing the strengths of individuals and families. The content focuses on the Traits of Strong Families: commitment, wellness, ability to cope with stress, conflict and crises, communication, appreciation and time together.

For registration and/or more information, contact:
Linda Tharp, Ed. D.
350 Arapahoe #5
Boulder, CO 80302
(303) 447-0593

REPORT of The National Council on Family Relations

Executive Director Mary Jo Czapski
Editor Kathy Collins Royce
Typesetting and Printing Sunshine Graphics
Cambridge, MN

NCFR Report is published quarterly by the National Council on Family Relations, 3989 Central Ave. N.E., Suite 550, Minneapolis, MN 55421. Third-class postage permit.

Subscription rate is \$5, included in annual membership dues. \$12.00 per year postpaid individual rate.

NEWS DEADLINES: February 1 for March issue; May 1 for June issue; August 1 for September issue; November 1 for December issue.

CFLE Task Force submits plan to Board



Dawn Cassidy
Certification Director

The CFLE Task Force has been busy working on a plan which would allow the CFLE program to remain within NCFR. The Task Force met in Dallas, TX the weekend of January 13 and 14 and put together several proposals which would enable the CFLE program to break even in the year 1992. The plan includes the following:

- * Raise the application fee from \$125 for the Experience Recognition application and \$150 for the Standard Application to a flat fee of \$175.
- * Revise the application process to make it more "user-friendly." The actual requirements of the designation will remain the same; the process of documenting the appropriate background will be simplified.
- * Raise the yearly renewal fee from \$20 to \$30.
- * Market the Provisional Certification extensively to new graduates.
- * Reduce the reliance on mass marketing and ask that NCFR members and CFLEs take a more active part in recruiting new applicants. Reactivate the State Coordinators program.
- * Reduce the expenditures for support staff at NCFR by eliminating one quarter-time position and reducing other staff time.
- * Propose a membership service fee to come from the NCFR dues of CFLE members.
- * Establish a non-member application fee that would be higher than the member fee plus dues.
- * Develop and sell a "teacher's kit" from lesson plans and program ideas donated by active CFLEs and NCFR members.

The Task Force proposal will be presented to the NCFR Board of Directors for vote at the April Board meeting.

The summary of the Task Force's proposal has been sent to all CFLEs for their input. In addition, a survey was sent

to all CFLEs requesting information which was useful to the Task Force in developing and confirming their plan.

The CFLE grass roots task force, led by Carol Mertens, CFLE, and Steve Bollman, CFLE, has been instrumental in helping the Task Force gather necessary information. Because of their efforts, CFLEs now have their own focus group! This means that CFLEs will have time and meeting space at the November, 1991, annual conference in Denver to meet and discuss the CFLE program and family life education. In addition, a symposium has

been submitted for presentation at the annual conference. This presentation will cover "Issues Pertinent to the Continuation of the Certified Family Life Educator Program in NCFR." It's very exciting to see the CFLEs joining together!

Steve Bollman, CFLE, initiated a pledge campaign to show support of the CFLE program. The pledge form, which was included in the latest **NETWORK** and is available through the NCFR office or Steve Bollman, invites interested family life educators to show their support for the

CFLE program. The form reads, "I pledge to apply for the designation of Certified Family Life Educator (CFLE) if the program is continued by NCFR, or if another organization takes responsibility for its administration." If you are interested in applying for the CFLE designation and want to show your support, request a pledge form or send a letter, stating your intentions.

I'll report on the results of the April Board meeting in the next **REPORT**.
Dawn Cassidy
Certification Director

Free Search Time On Network

From March 24 to April 20, the Human Resource Information Network (HRIN), a subsidiary of the Bureau of National Affairs, is giving free search time to subscribers wishing to search NCFR's Inventory of Marriage and Family Literature online database. A total of 15 minutes per day will be allowed.

You may search the database under the option code network listing of FAMRES. Call 1-800-421-8884, Executive Telecom Services Inc., to obtain the password.

Call NCFR for a copy of the User Guide for searching the database - 612-781-9331.

All nominations for the Marie F. Peters Ethnic Minorities Award must be made by **April 30**.

Please contact Alice F. Coner-Edwards at 202-882-8625 or 624-7879 for more information.

Family Life Education Framework

Attractive 3-color glossy-finished poster describes major content & learning concepts for family life education programs over the life span.

Ideal for • curriculum design
• program development
• classroom instruction
• program assessment

Topic Areas
• Family Interaction • Interpersonal Relationships • Human Development & Sexuality • Parenting • Family Resource Management • Ethics • Families and Society.

\$7 includes postage & handling



National Council on
Family Relations
3989 Central Ave. N.E., #550
Minneapolis, MN 55421
(612) 781-9331
(612) 781-9348 FAX

Call For Nominations and Applications for the position of EDITOR

**Family Relations: Journal of Applied
Family and Child Studies**

The Publications Committee of the National Council on Family Relations is accepting nominations and applications for the position of Editor of the journal **Family Relations**. The term of the current editor, Timothy Brubaker, will be completed with the publication of the October, 1992, issue. The four-year term of the new editor will begin with the publication of the January, 1993, issue. However, editorial responsibilities, including processing of manuscripts, will be transferred to the new editor beginning approximately June of 1992.

NCFR anticipates making the selection of the new editor at the annual conference in November, 1991, in Denver, CO. A detailed position description may be obtained by writing to the Family Relations Editors' Screening Committee, National Council on Family Relations, 3989 Central Avenue NE, Suite 550, Minneapolis, MN 55421 (612-781-9331). Nominations and applications, which should include a curriculum vitae and a letter of application, should be sent to the above address by **July 15, 1991**. The new editor must be a member of the National Council on Family Relations.

Available
now for
Classroom
Adoption

CONTEMPORARY FAMILIES:

LOOKING FORWARD, LOOKING BACK

Edited by Alan Booth, University of Nebraska

The National Council on Family Relations continues its tradition of publishing authoritative information on families. This collection of original articles, previously published in the November, 1990, **Decade in Review** issue of the *Journal of Marriage and the Family*, surveys outstanding research on family issues in the 1980s and provides the most recent update of family theory. **Contemporary Families** includes an additional 120 pages of information plus trend projections for the decade ahead.

Topics include: Trends and Directions in Family Research • Child Care • Remarriage and Stepfamilies • Families in Later Life • Adolescent Sex, Pregnancy, and Parenting • Work and Family Life • Impact of Divorce on Children • Domestic Violence and Sexual Abuse • Minorities • Health • Policy • Therapy.

Order Today! **\$23.95 for non-members — \$19.95 for members and orders of 10 or more.** Price includes postage and handling for U.S. orders only. Canadian orders must add 7% GST. Foreign and Canadian orders add \$2 per book.

Enclosed is \$_____ for _____ copies of *Contemporary Families* at \$_____ each.

★ ★ ★ ★ ★ ★ ★ ★

Name _____

Address _____

City _____ State _____ Zip _____

Telephone (_____) _____ NCFR Membership # _____

VISA # _____ Exp. Date _____

Signature _____ Date _____

(I agree to pay 2.65% service charge on credit card orders)
All orders must include a check or money order payable to NCFR (U.S. funds drawn on U.S. banks). Postal money orders accepted.



National Council on Family Relations
3989 Central Avenue N.E., Ste. 550
Minneapolis, MN 55421
(612) 781-9331 • (612) 781-9348 FAX

FAMILY LIFE EDUCATION CURRICULUM GUIDELINES

Offers guidelines for developing or assessing family life education programs over the life span. Includes college and university curriculum guidelines in addition to other helpful resources. A must-have for anyone involved in family life education program development or assessment.

Areas covered include:

- Families in Society
- Internal Dynamics of Families
- Human Growth & Development
- Human Sexuality
- Interpersonal Relations
- Family Resource Management
- Parent Education & Guidance
- Ethics
- Family Life Education Methodology

Articles, references and more. \$12.95

For ordering information, contact:
National Council on Family Relations
3989 Central Ave. N.E. - Suite 550
Minneapolis, Minnesota 55421

(612) 781-9331



State of the Association - - 1990



Mary Jo Czaplewski
Executive Director

The 1987 NCFR Board of Directors requested that each March this column be devoted to a summary description of the State of NCFR as an association in preparation for the ensuing year.

The year 1990 could be characterized as one of "soul searching" as the Board of Directors undertook the difficult task of strategic planning to focus NCFR's mission and programs for the 21st century. It was also a year of dynamic

communication as NCFR members voiced their opinions about what NCFR's future should be - and the Board listened, and read, and read. At the conclusion, it can be said that NCFR is privileged to have many members who really care about its future directions and a cadre of leaders who are committed to making NCFR the very best family focused organization possible. Struggles have ensued, but with them some progress has occurred in many aspects of the organization.

Of greatest significance is the fact that in 1990, NCFR retired its \$93,000 fund balance deficit (a paper deficit), reaching that goal two years ahead of schedule. NCFR now has a positive fund balance of \$49,000, permitting the NCFR Board for the first time to invest its capital in longer term growth funds. (These are unaudited figures.) In addition, in 1990, NCFR's gross income topped the million dollar mark due to increased sales of non-member journal subscriptions; the success of NCFR's best seller, **2001: Preparing Families for the Future**—now in its 3rd printing; the sale of family life education posters and curriculum packets; and continued sales of the **Inventory of Marriage and Family Literature** (Vols. 13, 14, and 15).

NCFR's headquarters staff has been downsized as a result of the Strategic Plan.

Despite an increased workload brought about by the Plan and greatly increased product sales, two fulltime positions have been eliminated: the director of the Family Resources Database and a clerical/certification support staff. The new computer system which integrates financials with all NCFR programs has required significant staff shifts and additional training. A short-term loan on the new computer hardware was paid off 24 months in advance.

In December, the **Inventory of Marriage and Family Literature** production was transferred to an NCFR professional editorship at Texas Christian University. John Touliatos is now the editor and has completed the editing of Volume 16 published this month. Dr. Touliatos will be restructuring both the online database and the hardcopy Volume 17 during 1991.

NCFR assumed a leadership role as the lead coordinating organization of the Consortium of Family Organizations under the able guidance of Dr. Margaret Feldman, NCFR's Washington representative. During 1990, a new Consortium member was added: the Family Resource Coalition. The consortium's latest project is working with government agencies on family data

collection used as a basis for research on families. NCFR and its members are challenged now to prepare for the 199 U.N. Year of the Family!

The continuation of the Family Life Education Certification program was reviewed by a special task force appointed by the Board of Directors last November. Their recommendations will be forthcoming at the April, 1991, Board meeting.

The NCFR Board of Directors began its work on a mission statement of NCFR and will also be resubmitting constitutional changes to the membership in 1991. The membership committee, headed by Gar Bowen, plans to poll the entire membership about subsequent change needed to improve NCFR's member services. 1990 was indeed a year of upheaval and great discussion, but it lay the foundation for constructive change in 1991 and in the future.

Mary Jo Czaplewski
Executive Director

BUILD YOUR PRACTICE WITH CLIENT-ORIENTED NEWSLETTERS

TODAY'S FAMILY IS A PRACTICE-BUILDING NEWSLETTER that offers a favorable perspective on marriage and family therapy to your current and prospective clients. Using laypersons' language, each issue addresses a specific theme via stimulating articles, short features, and a pertinent bibliography.

USEFUL AS A GENTLE AND ETHICAL PROMOTIONAL TOOL, the quarterly, four-page newsletter can be personalized to identify you and your practice to potential clients. For a minimal charge, we will imprint each issue with your name, address and phone number on the back cover. Imprinted or plain, **TODAY'S FAMILY** is suitable for office display or professional mailings.

Save 15% by Ordering A One-Year Subscription!

25 copies (min.) x 4 issues ..\$42.50/yr.
50 copies\$85/yr.
100\$163/yr.
500\$765/yr.

PERSONALIZED

100 copies x 4 issues\$364
500 copies x 4 issues\$1065

Non-Subscription Price

1 copy\$.75
(Minimum= 25 copies)
25-50\$.50 each
51-100\$.48 each
101-500\$.45 each

PERSONALIZED

100 copies (min.)\$ 115.
500 copies\$ 310.

ALL ORDERS MUST BE PREPAID



ISSUE #1: STEPFAMILIES

- *Stepfamily rituals*
- *Stepteens adjusting*
- *Adding a baby in marriage*

ISSUE #2: ADOLESCENT PROBLEMS

- *Getting along with parents*
- *Drug and alcohol abuse*
- *School/parent cooperation*

**Make check payable to "AAMFT" and send to: AAMFT • Dept. A-3
1100 17th St., NW • Tenth Floor • Washington, DC 20036**

Keynote speakers to address poverty issues



Alexis Walker
1991 Program Chair

Preparations are underway for the 1991 annual conference on "Families and Poverty." We are delighted to have three outstanding individuals as keynote speakers for the meeting.

Michael B. Katz, the Stanley I Sheerr Term professor of history and director of the Urban Studies Program at the University of PA, will address the conference on Sunday, Nov. 17. He earned his Ed.D. in the history of education from Harvard University in 1966.

Professor Katz has been a Visiting Scholar with the Russell Sage Foundation, a Fellow at the Shelby Cullum Davis Center (Princeton), a Guggenheim Fellow, a Jacobus Program Lecturer at the University of VA, Armitage Lecturer at Case Western Reserve University, Busch Lecturer at the University of MI, and Landsdowne Visitor at the University of Victoria. His research has been funded by the National Institutes of Mental Health, the National Institute of Education, the Rockefeller-Ford Foundation, and the Spencer Foundation.

He has published 12 books, including *Poverty and Policy in American History* (1983); *In the Shadow of the Poorhouse: A Social History of Welfare in America* (1986); and *The Undeserving Poor: From the War on Poverty to the War on Welfare* (1990). He has written numerous articles and book chapters.

Frances Fox Piven, author and activist, will address the annual conference on Monday, Nov. 18. She is professor of political science in the Graduate School and University Center at City University of



Michael B. Katz

NY. She earned her Ph.D. from the University of Chicago in 1962 and received an Honorary Doctor of Humane Letters from Adelphi University. She has held visiting professorships at the University of Amsterdam, Hebrew University, and the Institute for Advanced Studies in Vienna. She has been vice president of the American Political Science Association and both vice president and president of the Society for the Study of

Social Problems.

She received a Ford Foundation Study award, a Guggenheim Fellowship, a Walter E. Meyer Research Fellowship from NY University School of Law, and a fellowship from the American Council of Learned Societies.

In addition to myriad articles on political theory and institutional analysis, Professor Piven is co-author of *Regulating the Poor: The Functions of Public Welfare* (1971), which won the C. Wright



Frances Fox Piven

Mills Award of the Society for the Study of Social Problems and the Notable Books Council Award from the American Library Association; *The Politics of Turmoil: Essays on Class, Race, and Poverty* (1974); *Poor People's Movements: Why They Succeed, How They Fail* (1977); *The New Class War: Reagan's Attack on the Welfare State and Its Consequences* (1982; revised, 1985); *The Mean Season: The Attack on the Welfare State* (1987); and *Why Americans Don't Vote* (1988).

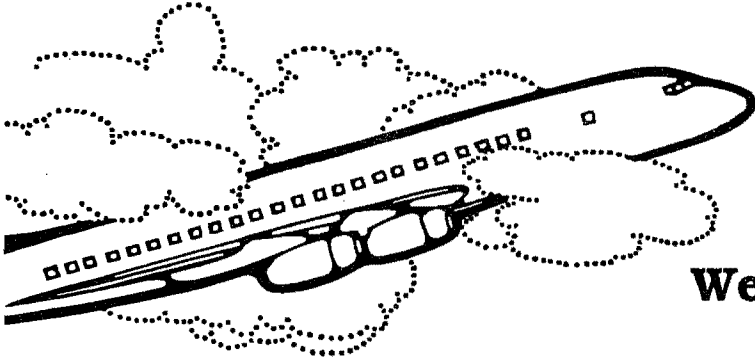
Professor Piven was a founder of the national welfare rights movement in the 1960s and the Human SERVE voter registration movement in the 1980s. She has served on the Board of Directors of the American Civil Liberties Union. For her writings in voter registration reform, she received the 1986 Award of the Eugene V. Debs Foundation. She has designated Human SERVE as the recipient of the honorarium she will receive from NCFR.

William Julius Wilson will deliver the Evelyn Duvall Distinguished Lecture at the annual conference on Tuesday, Nov. 19. He is a Lucy Flower University professor of sociology and public policy and director of the Study of Urban Inequality and Public Policy at the University of Chicago. A more detailed article on Dr. Wilson appears on page one of this issue.

Alexis Walker
1991 Program Chair

A travel agency

Odyssey



We are here to SERVE you...

Our convention division has over 14 years experience in handling group travel.

(612) 781-6583 (800) 543-3518 FAX: (612) 788-9355

3989 Central Ave. NE., Suite 101, Columbia Heights, MN 55421

Official NCFR

Conference Agency

Accept only the best!

Cofo is back!

The Consortium of Family Organizations offers a new and better Policy newsletter: ☐ Yes! I want COFO FAMILY POLICY REPORT!

THE COFO FAMILY POLICY REPORT

The Report reflects a new change from the former Coalition of Family Organizations. The four founding organizations--American Home Economics Association, American Association for Marriage and Family Therapy, Family Service America, and the National Council on Family Relations--welcome a new member--Family Resource Coalition--and a new name: The Consortium of Family Organizations.

The COFO FAMILY POLICY REPORT promotes a family perspective in public policy and human services, and will assist policymakers in evaluating legislation and social programs from this family perspective.

Publication dates: Spring, Summer, Fall, and Winter

A one-year subscription is \$12.00
but if you are a member NCFR
you can receive the POLICY REPORT
for just \$10.00!

☐ One year \$12 U.S. ☐ Two years \$24 U.S.
☐ One year NCFR member \$10 U.S. ☐ Two years NCFR member \$20 U.S.

Canadian and foreign orders add \$5.00 per year for additional postage.

Canadian residents add 7 percent GST.

Name _____
Address _____
City _____ State/Province _____ Zip/Post zone _____
Telephone () _____ NCFR ID Number _____
Payment*: Check enclosed _____ VISA/MasterCard _____
VISA/MasterCard number _____ Expiration date _____
Signature _____ Date _____

I will pay a 2.65% service charge on credit card orders.
U.S. funds drawn on U.S. banks only. Bank or postal money orders accepted.

National Council on Family Relations 3989 Central Av. NE Suite 550
Minneapolis, MN 55421 nl91

Student volunteers are needed to assist with a number of activities at the annual conference in Denver, CO. Areas where students typically have served NCFR well include the monitoring of sessions, assisting in the press room and hospitality room, registration and the overall operation of the meeting, and monitoring the Employment Service. Clearly, this help has been invaluable to the smooth and effective operation of the conference.

Once again we urge your participation in the conference, and invite you to participate in 8 hours of volunteer activities. In return, your student member registration fee of \$50 will be refunded.

Family Medical Leave Act reintroduced



Margaret Feldman
NCFR Washington Representative

NCFR's Washington Representative is now COFO coordinator. This position rotates among the five COFO organization to spread the work and responsibility. It will be a challenge for the Minneapolis office and me here in Washington, but we are off to a good start. Many COFO functions are already distributed among the organizations so that my job is keeping things on track. NCFR executive director Dr. Mary Jo Czaplewski has always arranged for Legi-Slate, a database of federal legislative information, which COFO organizations subscribe to as a group. NCFR will now be taking over the lead role for the COFO Data Collection Project because of the special interest of our members in research.

Data Project

COFO has been working on the Data Project for about two years. COFO hopes to serve as a catalyst to promote an organized family focus in federal data collections. A proposal is being developed, and foundation money will be sought. The project will work to find all current federal data collection agencies which have family data, talk with experts in the agencies to determine a structure leading toward cooperation among agencies, and then work toward implementation of the agreed upon structure.

A model is the current Interagency Forum on Aging-Related Statistics. This Forum meets four times a year and has found gaps in data collection, found ways different agencies could cooperate on data items, and worked to standardize definitions and categories.

A second part of the COFO proposal is to look into the possibility of organizing some sort of non-partisan, objective "think tank" to work with these family data and draw up status-of-the-family reports. Such a group could be available for informed data needed by Congress, the media, and the public.

In both aspects of the project, the needs of researchers, policy makers from all agencies and Congress would be considered and ways explored to make data more easily available.

Legislation

The major family thrust already underway in both the House and Senate as the new session begins, even in spite of the Gulf War, is the reintroduction of the Family and Medical Leave Act. (HR.2 and S.5 (Dodd). You will remember that this bill was passed by both the House and the Senate, but vetoed by the President. (Low numbers of bills show priorities by the leadership.)

NCFR is one of about 160 national organizations of all kinds who over the past four sessions are listed as supporting this bill. At a hearing on January 24th, Most Reverend James Malone of the Committee on Domestic Social Policy of the Catholic Church said FMLA was important as young women were struggling

with the decision of whether to have an abortion; Lawrence Perlman, Pres. and CEO of Control Data Corp. reported increased production by his female work force when hourly flexibility and leave were instituted; and Dr. T. Berry Brazelton reported the importance of his research on "bonding" as showing a necessity for leave at the time of birth or adoption of a baby. The main argument against the bill is that the government should not mandate benefits, even though present day experience shows that many businesses do not have an adequate leave policies.

The Women's Legal Defense Fund continues as the lead agency for this bill and is actively working with the staff of the leadership.

The Civil Rights Bill, vetoed by President Bush because it was a "quota" bill, is being reintroduced as H.R.1. Proponents point out that the wording of the bill explicitly states the bill does not constitute a quota bill.

Senator Bentsen (D-TX) has introduced S.4, Child Welfare and Preventive Services Act to amend Titles IV, V, and XIX of the Social Security Act to establish innovative child welfare and family support services to strengthen families and avoid placement in foster care. The bill will also promote the development of comprehensive substance abuse programs for pregnant women and caretaker relatives with children, and provide improved delivery of health services to low-income children. No lead advocacy organization has been designated for this bill. Hospital people, and doctors as well as child welfare organizations are interested.

Congressional Response to the Gulf War

The Gulf War is different from any previously fought war. Over half of the force is married, as opposed to 15% in the Viet Nam War. The Washington Post stated that 1.8 million children under 13 are dependents of military personnel. Intact families are being broken in very large numbers and single-parent and no-parent families being created.

As this report is being written at the end of February, at least two senators are preparing and introducing bills to assist families of military who have been deployed to the Gulf. Senator Kennedy has introduced S.281, which asks for \$20 million from the Department of Defence funds of which \$15 million will pay for additional counseling staff for non-profit organizations already working with the military, like the Red Cross. Additional money would enlarge services on bases to impacted families to make available "one-stop shopping" for the services they need now, such as food stamps and welfare assistance. Seven larger bases already have this service but additional money would allow smaller bases to expand services.

Senator Kohl (D-WI) has a bill which would order the military to take family composition into account in selecting personnel for deployment. According to present DOD regulations, all military persons who have a baby or dependent child are required to produce a child care plan but these are not always updated. The Kohl Bill will also deal with dependent elderly.

NCFR has signed on in support of these bills designed to strengthen families in the military.

Other Washington Activities

Implementation and evaluation of the Family Support Act, passed in 1988 continues to be an issue of interest and was the subject for the last Family Impact Seminar held on the Hill for staffers.

Increasingly, policy makers, business people, Congresspersons, media and the public at large, are speaking out in support of families and investment in human capital. Business men are looking at family benefits to improve productivity and worry that they will not have the educated and highly trained work force necessary for "Workforce 2000", the title of a Department of Labor report. Some are looking longingly at the German apprenticeship program that gives high school graduates the skills needed for entry into today's high tech world.

Business leaders and hospital administrators are also speaking out for national health. The vice president of a Fortune 500 company was quoted as saying "I think it's time for socialized medicine, don't you?"

The Washington Post of Feb. 1 ran a page wide article entitled, "1980s 'Terrible' for American Children". Many senators and representatives are working with their staffs and advocacy organizations toward incremental changes in programs to help the children.

Human Genome Project

The genome is all the genetic material in the cells of a particular

See Genome
on page 7

INVENTORY OF MARRIAGE AND FAMILY LITERATURE Online and Hard Copy

The only comprehensive annual index of professional literature in the family field.

Thousands of journal articles from over 500 professional journals cross-referenced by author, subject, and key-word-in-title.

Includes information on:

MARRIAGE AND FAMILY....

- * Trends
- * Organizations & Services
- * Therapy
- * Research
- * Education
- * Employment
- * Relationships

Send me _____ copies of the Inventory of Marriage and Family Literature!

	Non-Member	Member
_____ Volume 16 - 1989-90 data	\$124.95	\$ 45.00
_____ Volume 15 - 1988-89 data	\$119.95	\$ 45.00
_____ Volume 14 - 1987 data	\$ 75.00	\$ 35.00
_____ Volume 13 - 1986 data	\$ 49.95	\$ 29.00
_____ On-line User Guide - (tool for searching the online database)	\$ 40.00	\$ 40.00
Total	\$ _____	\$ _____

Name _____
Address _____
City _____ State _____ Zip _____
Phone (____) _____ NCFR Member # _____
VISA/Mastercard # _____ Exp. Date _____
Signature _____
(I agree to pay a 2.65% service charge on credit card orders)

All orders must include a check or money order payable to NCFR (U.S. funds drawn on U.S. banks only.) Postal money orders accepted. Canadian and Foreign orders add \$8 per item for shipping and handling. Canadian orders add an additional 7% GST.

National Council on Family Relations
3989 Central Avenue N.E., Ste. 550
Minneapolis, MN 55421
(612) 781-9331 • (612) 781-9348 FAX



Consider volunteering at conference



Patricia H. Dyk
S/NP Representative

Greetings! I hope this year has begun on a productive note for all students and new professionals. Although November seems like a long way off, I hope you are planning to attend the annual conference in Denver, CO. Terri Heath (S/NP rep-elect) is organizing some interesting and informative sessions to assist you in your professional development. As you will note, there are several ads in this issue that are pertinent to you and provide ways to cut the costs of attending the annual conference:

Volunteers at Annual Conference
This is an excellent opportunity for you to gain a better understanding of the

Meeting

May 1-5 - **Back to the Future**, 23rd annual conference of the American Association of Sex Educators, Counselors and Therapists, at the Marriott Pavilion Downtown, St. Louis, MO. Contact AASECT, 435 N. Michigan Ave., Suite 1717, Chicago, IL 60611-4067; 312-644-0828.

organization, network with students and professionals, and save money. By volunteering 8 hours of your time during the meeting in Denver, your conference fee will be refunded.

Student Housing for Annual Conference

I remember how helpful the student housing placement service was the first meeting I attended in 1986, in Dearborn, MI. No other female faculty or students were attending from my university, and I certainly didn't want to bear the room cost alone. My conference roommate (who has become a very good friend and colleague!) introduced me to students and faculty from her university which was instrumental in helping me to establish a national professional network.

Student room rates for the 1991 conference will be \$108 triple; (\$36 per student per night plus tax; and \$117 quad (\$29.25 per student per night plus tax).

Student Award Nominations

Students, please don't be shy about asking your advisory or favorite faculty member to nominate you for the NCFR Student Award. You must have been an NCFR member for two years and show potential for leadership in the field of family relations. Please call me if you have questions or need more details. Faculty member's nomination letters need to be sent to me by April 30, 1991.

Student/New Professional Questionnaire

A questionnaire is included in this issue of the **REPORT** providing the opportunity for you to indicate your interests in NCFR participation. During the next six months I will be contacting all who indicate an interest in serving as the S/NP representative to the Board. This year we hope to interview

prospective candidates (March election of 1992 for a 2-year term beginning Nov., 1992) at the annual conference, so please let me know if you would like to throw your hat into the ring.

I appreciate the response from many of you returning the S/NP Questionnaire indicating your desire to become more involved in NCFR. Also, let me encourage you to become a dues-paying member of at least one Section so that you can begin to establish a network with other professionals who share your career interests. Most Sections publish newsletters to inform you further about the annual conference, other seminars of

interest, new resources available, and opportunities for you to participate in the section.

Terri Heath (S/NP rep-elect) and I will be attending the mid-year Board meeting in April. If you have any concerns that you would like us to present to the Board, please let us know as soon as possible. Patricia H. Dyk, Ph.D., Student/New Professional Representative, Dept. of Sociology, 500 Garrigus Building, University of Kentucky, Lexington, KY 40546-0215; 606-257-3228.

NCFR STUDENT AWARD

FACULTY!!!!

Many of you have outstanding students with potential for becoming leaders in our field.

Why not consider nominating them for the

NCFR Student of the Year

The winner receives national recognition and a \$500 cash award!

Faculty member's nomination letter should be sent to:

Dr. Patricia H. Dyk
Dept. of Sociology
500 Garrigus Bldg.
Univ. of Kentucky
Lexington, KY 40546-0215

Deadline: April 30, 1991

For more information, call Tricia at 606-257-3228.

Genome from page 6

organism. Since 1988, the National Center for Human Genome Research of the National Institute of Health, and the Office of Health and Environmental Research of the U.S. Department of Energy (surprised?), have been collaborating in an effort to map the human genome and determine the DNA sequencing. The study of families carrying certain traits is basic to determining the location of adverse genes and, as knowledge is developed about these adverse genes, the need for counselors and ethicists to work with families will be crucial. The lead agencies will set aside at least 3 percent of their annual budgets for the support of scholarly activities that address the ethical, legal and social implications of the project. Some NCFR members may be interested in research and involvement in this field.

NCFR Policy Initiative

NCFR has moved into a new phase of interest in social policy with the election of the first vice president for public policy, Roger Rubin. Dr. Rubin chairs the Policy Committee which consists of Washington based NCFR members. At the organizational meeting of this committee, plans were worked out to identify and

differentiate the functions and duties of the Family Policy (formerly Family Action) Section chaired by Dr. Shirley Zimmerman, the V.P. for Policy, the Policy Committee and the Washington Representative. Results of this first meeting will be presented at the next Board meeting in April.

A major proposal is to initiate a FAMILY FAX NETWORK. If approved, state associations will be invited to join this network. When there is need for grassroots action in order to promote a bill which NCFR has been supporting, a FAX giving details will be sent to a contact person in the state who has agreed to take action appropriate for that state and contact at least five other people. This would give NCFR a direct method of showing its involvement in policies directed toward families.

WE'RE THANKFUL THAT THE WAR WAS SHORT FOR THE SAKE OF ALL FAMILIES, THEIRS AND OURS. NOW WE CAN GO BACK TO WORKING ON THE PROBLEMS OF GETTING ALONG TOGETHER BOTH HERE AND IN THE GULF.
Margaret Feldman, Ph.D.
NCFR Washington representative

STUDENT/NEW PROFESSIONAL QUESTIONNAIRE

Name: _____

Address: _____

Telephone Number: (Office) _____ (Home) _____

☐ I would like information about running for Student/New Professional Representative to Board of Directors

Are you planning to attend the 1991 Annual Conference in Denver?
☐ Yes ☐ No

Would you like to participate in the 1991 program? If so, indicate your interests.

☐ Student/New Professional Representative to Sections/Committees (Section: _____)

☐ Skills Exchange

☐ Display Presentation Presider (area: _____)
See page 4 of Call for Papers

☐ Annual conference student volunteer (8 hours in return for free conference registration)

☐ Helping with student-sponsored party

☐ Other

Return questionnaire (at once) to:

Patricia H. Dyk, Ph.D.
Dept. of Sociology
500 Garrigus Building
University of Kentucky
Lexington, KY 40546-0215
(606) 257-3228

Classified ads

Western Kentucky University Department Head Home Economics and Family Living

Applications and nominations are invited for the position of Head of Home Economics and Family Living beginning July, 1991. This is a 12-month position with faculty rank of associate or full professor. Salary dependent upon qualifications. The department consisting of 15 full-time faculty, offers undergraduate and graduate programs in Hotel/Restaurant Management, Dietetics, Interior Design, Textiles and Clothing, Child Development and Home Economics Education and serves approximately 400 majors/minors. Responsibilities include effective leadership in departmental planning, participation in instruction, research and service activities in Home Economics Administrators' Organizations or other professional organizations, and facilitating funding from business, industry and government. Qualifications include appropriate earned terminal degree, experience in unit administration and budgetary matters, demonstrated effectiveness in planning and management of human and material resources, and ability to further goals and objectives of department. Send letter of application, vita and three references to Office of Academic Affairs, Home Economics Department Head Search, Western Kentucky University, Bowling Green, KY 42101. Review of applications will begin on March 11, 1991. Women and minorities are encouraged to apply. An Affirmative Action, Equal Opportunity Employer.

Chair, Department of Child Development and Family Relations, East Carolina University. Available August 19, 1991. Responsibilities: Administration of the department including faculty and program development and evaluation, budget management, providing leadership regarding public policy issues related to children and families, teaching, conducting independent research, directing master's theses, and participating in service as appropriate. Qualifications: Ph.D. in Child Development and/or Family Relations or related area; successful record of teaching, research, and service suitable for tenure at time of appointment; administrative experience preferred; grantsmanship skills and active research program required. Screening or applications will begin April 15, 1991. Send letter of application, vita, and the names and addresses of five references to: Dr. Judy Bohannon, Chair, CDFR Search Committee, Department of Child Development and Family Relations, East Carolina University, Greenville, North Carolina 27858; 919-757-6908. Official transcripts will be required upon employment. East Carolina University is an AA/EEO Employer. Applicants must comply with the Immigration Reform and Control Act.

Human Development and Family Studies: Assistant/Associate Professor, nine-month tenure track position. Position requires doctorate in family studies or related field with specialization in family life span development, and family interaction and/or family theory. Responsibilities include

undergraduate and graduate teaching, directing graduate student research, and developing a record of obtaining grants and publishing. Application deadline is March 15, 1991 or until filled. Applications should include a letter of application, vita, five names of references, and recent publications. Send to Joyce M. Mercier, Ph.D., Chair, Search Committee, Department of Human Development and Family Studies, 58 N. LeBaron Hall, Iowa State University, Ames, Iowa 50011. FAX: 515-294-2502. Iowa State University is an equal opportunity, affirmative action employer.

Child and Family Studies, Tenure-track Position, Assistant Professor, August 1991. Qualifications: Applicants must have an earned doctorate in Family Studies or comparable program; demonstrated research expertise and evidence of ability to direct doctoral research; strong commitment to and experience in undergraduate and graduate teaching; and demonstrated effectiveness in working with colleagues and students. Applied interests and experience are especially desirable. Responsibilities: Duties include regular teaching load of undergraduate and graduate courses (normally two courses per semester) within the family science curriculum; committee assignments at department, college and university levels, undergraduate advising; service on master's and doctoral student committees; active professional participation in community services; and pursuit of individual research agenda. Deadline: April 1, 1991 (or

until filled). Applicants should send vita, 3 letters of recommendation, and 2- recent publications to: Dr. Greer Litton Fox, Chair, Faculty Search Committee Department of Child and Family Studies University of Tennessee, Knoxville, TN 37996-1900. UTK is an EEO/AA/Title IX/Section 504 Employer.

Family Studies/Ethnic Studies Assistant or associate professor. Tenure track. Doctorate required. Salary commensurate with experience. Joint responsibilities between Dept. of Family and Consumer Studies (FCS) and Ethnic Studies Program (ES), with tenure accruing in the former. Duties include teaching FCS and ES courses. Teaching and research interest related to minority American families (African American, Native American, Asian American, and Hispanic) are preferred. FCS, an interdisciplinary department within the College of Social and Behavioral Science, offers undergraduate and graduate degrees. ES is an interdisciplinary program which grants minors and reports to the Office of the Associate V-P for Diversity and Faculty Development. Starting date is September 15, 1991. Application deadline is April 15, 1991 or until position is filled. Send vita, 3 letters of reference, and copies of publications or other written work to: Dr. John Burton, Search Committee Chair, Family & Consumer Studies, 228 AEB, University of Utah, Salt Lake City, UT 84112. Women and minorities are strongly encouraged to apply. The University of Utah is an Equal Opportunity/Affirmative Action Employer.

The John and Kelly

HARTMAN CONFERENCE on CHILDREN and their FAMILIES

Social Competency in Childhood and Adolescence

A Program of Child and Family Agency of Southeastern CT, Inc.

June 5,6,7, 1991

at Connecticut College, New London, Connecticut

KEYNOTE SPEAKER

George W. Albee

FEATURED SPEAKERS

Martin Bloom
Steven J. Danish
Robert D. Felner
A. Chris Downs
Gary Peterson
Geoffrey K. Leigh
Darwin L. Thomas

Meet the Editors • Undergraduate/Graduate Course Credit Available
• Institutes • Workshops • Papers • Book Displays



Mix business and pleasure along the scenic shoreline of Connecticut! Beaches, boats, parks, and national tourist attractions are all located within a few miles of Connecticut College.

Sponsored by the *Journal of Primary Prevention*, the *Journal of Early Adolescence*, the *Journal of Adolescent Research*, the *Journal of Adolescence*, and Sage Publications.

For further information, please contact
Tom Gullotta or Millie Stanton,
(203) 443-2896
or FAX (203) 442-5909

Classified ads

Chair, Family Sciences Department: Associate Professor or above, tenure track. Ph.D. in home economics education, consumer sciences, child/human development, family studies, counselor education, family therapy or related area. Academic and administrative experience: teaching, planning, public relations, research, budgeting. Send vita, letter of application, three letters of reference to Dr. JoAnn Engelbrecht, Chairperson, Family Sciences Search Committee, P.O. Box 23029, Texas Woman's University, Denton, TX 76204. Screening begins March 1. Texas Woman's University is an Equal Opportunity/Affirmative Action Employer.

Family Science - The School of Family and Nutritional Sciences at the University of British Columbia requires a full-time, sessional lecturer to teach in the area of Family Science. The candidate will be expected to teach six 3.0 credit courses (e.g. courses having three 50 minute lectures per week for 13 weeks). Especially likely to include the Contemporary North American Family in Societal Context. Family Resource Management, Marital and Family Interaction in North America, and Family Research plus some of the following: Families in the Canadian Economy, Introduction to Family Science, Economic Roles of Women, the Development of Relationships, and Housing for the Family. The Appointment will be from September 1, 1991 until May 31, 1992. Salary: \$30,000. In accordance with Canadian Immigration requirements, priority will be given to Canadian citizens

and permanent residents.

The University of British Columbia is committed to the federal government's equity program and encourages applications from all qualified individuals. Preference will be given to candidates with the following qualifications: a Ph.D. plus experience teaching Family Science and Human Development courses. Please submit a resume, including the names of three references who may be contacted. Applications will be reviewed on or about March 15, 1991, but applications will be accepted until the position is filled.

Inquiries and resumes should be addressed to: Dr. Daniel Perlman, Director, School of Family and Nutritional Sciences, University of British Columbia, Vancouver, Canada, V6T 1W5; Phone: 604-228-6518; FAX 604-228-5143; BitNet: USERHDP@UBCMTSG.

Messiah College: Tenure-track faculty position in Human Development, starting in 1991-92. Responsible for teaching in areas chosen from human development, psychology or family studies, depending on qualifications. Ph.D. in Human Development or related field required. Messiah is a Christian liberal arts college seeking candidates committed to an evangelical expression of the Christian faith. Send letter of inquiry and resume to Dr. Ron Burwell, Chair, Behavioral Science Department, Messiah College, Grantham, PA 17027. Women and Minorities encouraged to apply. An Affirmative Action, Equal Opportunity Employer.

Family Relations Child Development: Assistant Professor Tenure-track position to begin Fall 1991. Doctorate preferred. Application Deadline: February 1, 1991, or until position is filled, but no later than August 1, 1991. Contact: Dr. E. Audrey Clark, Chair, Department of Home Economics, California State University, Northridge, Northridge, CA 91330, an equal employment opportunity/affirmative action Title IX, Section 504 institution.

May 26 - 29, 1991 - 15th Western Canadian Conference on Family Practice "Honoring our Past, Embracing our Future." Featuring: Augustus Napier and Barbara Pressman. To be held at The Banff Centre for Conferences, Banff, Alberta, set in the Canadian Rockies. The conference offers keynote plenary sessions and 11 workshops limited to 20-30 participants presented by family therapists from Canada and US. Contact Alix Hirabayashi, School of Social work, The University of British Columbia, 6201 Cecil Green Park Road, Vancouver, BC V6T 1W5; 604-228-2576.

Lecture

The School of Family Studies, University of Connecticut announces the 1991 Marie Ferguson Peters Lecture honoring Scholarship of Black Family Life. Black Families in the '90s: Possibilities and Expectations. Guest lecturer: Dr. Curtiss E. Porter, President and CEO, Urban League of SW Fairfield, County, Connecticut. Presented February 7, 1991.

Workshops

Workshop: "Reaching Children Through Play Therapy" with Drs. Carol & Byron Norton - April 5-6 in Seattle, WA; May 6-7 in Winnipeg, Manitoba; May 10-11 in Vancouver, BC; June 21-22 in San Francisco, CA. Call for future '91 & '92 dates. CEU's Pending. Contact: Family Psychological Consultants, 826-9th St., Greeley, CO 80631; 303-352-6790.

Upcoming Conference The Association for Play Therapy (APT) presents The 8th Annual International Play Therapy Conference October 4th-5th, 1991 in Breckenridge, Colorado with Pre-Conferences on Oct. 2nd-3rd. **Theme: PLAY The Language of the Child.** Contact: 1991 APT Conference, c/o Family Psychological Consultants, 826 Ninth St., Greeley, CO 80631; 303-352-6790.

Sourcebook ready

The chapters for the Sourcebook on Family Theories and Methods are being mailed to Plenum Press. The short application pieces which follow each theory chapter are being finalized. Over 50 students and colleagues gave generously of their time and expertise to let us know their reactions on content and readability. Pauline Boss, Bill Doherty, Ralph LaRossa, Walter Schumm, Suzanne Steinmetz.



University of Alberta
Edmonton

Dean Faculty of Home Economics

The University of Alberta is seeking an academic and administrative leader for the Faculty of Home Economics. The Dean is responsible to the Vice-President (Academic) for the supervision and administration of the academic programs, budgets, and all activities of the Faculty. The successful candidate will have appropriate scholarly and administrative experience and be committed to excellence in teaching and research.

The University of Alberta has an enrolment of over 29,000 full-time and part-time students. The Faculty of Home Economics comprises three departments: Clothing and Textiles, Family Studies, and Foods and Nutrition. The Faculty offers four-year undergraduate programs leading to the Bachelor of Science degree. Each Department has well-established Master's programs and graduate study at the doctoral level is available by special arrangement in cooperation with other departments at the University. Current enrolment is approximately 410

undergraduate students and 60 graduate students.

There are 25 continuing faculty members. Staff are actively engaged in research and excellent facilities are available. Faculty members work closely with members of related faculties.

The appointment will take effect on July 1, 1991 or when a candidate selected by the search committee and approved by the Board of Governors is available.

Written nominations or applications for the position, accompanied in the latter case by a resume of qualifications and experience, and the names of three referees, should be submitted by March 31, 1991, to:

Dr. J. Peter Meekison
Vice-President (Academic)
Third Floor, University Hall
University of Alberta
Edmonton, Alberta, Canada
T6G 2J9

The University of Alberta is committed to the principle of equity in employment. The University encourages applications from aboriginal persons, disabled persons, members of visible minorities, and women.



Published in cooperation with
National Council on Family Relations

New Perspectives on Family

Series Editor: Linda Thompson, University of Wisconsin, Madison

Books appearing in New Perspectives on Family are either single- or multiple-authored volumes or concisely edited books of original articles on focused topics within the broad field of marriage and family. Books can be reports of significant research, innovations in methodology, treatises on family theory, or syntheses of current knowledge in a subfield of the discipline. Each volume meets the highest academic standards and makes a substantial contribution to our knowledge of marriage and family.

AFTER MARRIAGE ENDS Economic Consequences for Midlife Women

by **LESLIE A. MORGAN**, University of Maryland
Since the late 1960's, the picture painted for women has been a bright one—one where women can become economically successful and where they have the same economic opportunities as men. But how bright is that economic future after divorce, separation, or death of a spouse. Using the National Longitudinal Study database, Morgan follows hundreds of women over a 15 year span to determine the long term economic similarities and differences on these women. By comparing the years before and after marriage, Leslie Morgan considers the occurrence, order, and timing of marital transitions, labor force participation, and financial well-being.

1991 (Winter) / 240 pages (tent.) / \$35.00 (c) (0-8039-3548-X)
\$16.95 (p) (0-8039-3549-8)

FAMILY VARIABLES Conceptualization, Measurement, and Use

edited by **THOMAS W. DRAPER**, Brigham Young University
& **ANASTASIOS C. MARCOS**, American College of Greece

Serious methodological problems face scholars who undertake research on the family unit. Most of the constructs that lead to family variables have been borrowed from other disciplines—many are transferred indiscriminately, many are hard to measure and test. Now, Draper and Marcos offer family researchers different perspectives on the identification, conceptualization, measurement, and testing of family variables. Contributors address conceptual issues in the study of families, describe the application of familiar techniques in family studies, and bring new or experimental methods to the reader's attention.

1990 (Winter) / 256 pages / \$35.00 (c) (0-8039-3111-5)

NCFR members receive a 20% discount when ordering. (Please indicate you are a member of NCFR when placing your order.)

© Sage Publications, Inc. The International Professional Publishers, 2455 Teller Road, Newbury Park, CA 91320

THE SECOND CHILD Family Transition and Adjustment

by **ROBERT B. STEWART, Jr.**, Oakland University
How does the birth of the second child impact on the family unit? What effect does it have on family relationships? How is the birth viewed by the firstborn child? These and other significant questions are explored in *The Second Child*. Stewart conducted extensive interviews with family members—both parents and the firstborn toddler—from the final trimester of the second pregnancy until the second child's first birthday. Interviews focused on how the birth of the second child affected relationships between other family members, their roles within the family, and their feelings about themselves.

1990 (Autumn) / 256 pages / \$35.00 (c) (0-8039-3519-6)
\$16.95 (p) (0-8039-3520-X)

SINGLE WOMEN/FAMILY TIES Life Histories of Older Women

by **KATHERINE R. ALLEN**, Virginia Polytechnic Institute
"The qualitative nature of this work is its strength. By not imposing the author's ideas onto the subjects, instead inviting them to voice their own history, the richness of these women's lives and choices comes into focus."

—Family Relations

1989 / 152 pages / \$35.00 (c) (0-8039-2804-1)
\$16.95 (p) (0-8039-2805-X)

FAMILIES AND ECONOMIC DISTRESS

Coping Strategies and Social Policy
edited by **PATRICIA VOYDANOFF & LINDA C. MAJKA**, both at the Center for Study of Family Development, University of Dayton
1988 / 312 pages / \$35.00 (c) (0-8039-2999-4)
\$16.95 (p) (0-8039-3000-3)

FAMILIES AND SOCIAL NETWORKS

edited by **ROBERT M. MILARDO**, University of Maine
1988 / 240 pages / \$35.00 (c) (0-8039-2643-X)
\$16.95 (p) (0-8039-2644-8)

WORKING WIVES, WORKING HUSBANDS

2nd Printing!

by **JOSEPH H. PLECK**, Wellesley College
1985 / 168 pages / \$35.00 (c) (0-8039-2489-5)
\$16.95 (p) (0-8039-2490-9)

Treasurer



Thomas Holman Ph.D. CFLE. (1) Associate professor of Family Science, Brigham Young University. (2) Associate professor of Family Living, University WI-Stout. (3) Past-president, UT Council on Family Relations; editorial board, *Family Relations*, Special Collections Collector, *Family Relations*; member, Theory and Research Methods Workshop, Family Discipline and Education and Enrichment Sections; president and program chair, UT Council on Family Relations; Board of Directors, WI Council on Family Relations; Student and New Professional representative, NCFR Publications committee. (4) President, Family Science Consortium; editorial board, *Family Science Review* and *Family Perspective*; Groves Conference on the Family; American Home Economics Association. (5) As treasurer of NCFR, I would press for fiscal responsibility and wise and prudent planning for future financial needs. I would pay particular attention to financial decisions that affect the ability of NCFR to meet the professional needs of as broad a spectrum of the membership as possible. As a member of the Board of Directors, I would represent the view that NCFR is a **multi-disciplinary and multi-paradigm organization** that is directed to serving the professional needs of a broad spectrum of family professionals in a variety of settings and occupations, and not just traditional social science researchers at large institutions.



Joe F. Pittman Jr. Ph.D. (1) Associate professor of Family and Child Development, Auburn University. (2) Assistant professor of Family and Consumer Studies, University of UT. (3) Board of Directors; vice-chair, Family Discipline Section; associate editor, *Family Relations*; Student Award winner, 1984. (4) Groves Conference; American Psychological Association. (5) A treasurer's most important commitment is to be diligent and thorough in record keeping, and responsible as a player in decision making. Part of being a responsible advisor, I believe, is being responsive to the membership, ensuring that those to be affected by financial decisions are aware of them and able to have a voice in their shaping. If elected, I will work to be a responsible and responsive treasurer. I am resolved to work toward maintaining a positive, supportive climate in the NCFR.

Nominating committee

David Baptiste Jr. (1) Director of Clinical Services, HCA Sun Valley Hospital, El Paso, TX. (2) Counseling psychologist, MN State University. (3) Vice president, Family Therapy Section; chair, Ethnic Minorities Section; Nomination committee of the Association of Councils; regional representative, region 6. (4) AAMFT, clinical member, Approved Supervisor, Fellow; APA; AACD. (5) As a member of the Nominating committee, I will make every effort to nominate election slates that allow for a broader representation of members than has been the case in the past. NCFR is rich with members who, if given the opportunity, will be happy to serve. Consequently, I see my role as a member of the Nominating committee, as serving NCFR by providing opportunity for a greater number of members to serve.



Brian K. Barber. (1) Director, Program for Adolescent Research, Center for Studies of the Family, and assistant professor of Sociology, Brigham Young University. (2) Assistant professor of Child and Family Studies, University of TN, Knoxville. (3) Member of Research and Theory and International Sections. (4) Society for Research on Adolescence and Society for Research in Child Development. (5) The purpose of the Nominating committee is to select slates of candidates for several general NCFR offices which have important decision-making responsibility. Priority criteria I would use in the selection process would be that the slate of candidates fairly represent the major constituencies within the NCFR membership, that individual candidates have demonstrated administrative and leadership experience, and that they are sufficiently well-known within NCFR to enhance their "electability." In accomplishing these goals, I would consult extensively with NCFR members in order to be adequately acquainted with potential candidates and thoroughly review their qualifications for the respective offices.



Patricia Bell-Scott Ph.D. (1) Associate professor, Human Development and Family Studies and Women's Studies, Storrs, CT. (2) Assistant EO and assistant to the president, MA Institute of Technology and adjunct research associate, Wellesley College Center for Research on Women. (3) Secretary-treasurer, Family Policy Section; Ethnic Minorities Section; Feminism and Family Studies Section; Family Discipline Section; Family and Health Section; Qualitative Family Science Network; SE Council on Family Relations; ad hoc reviewer, *Family Relations* and

Journal of Marriage and the Family. (4) American Sociological Association; division 35, American Psychological Association; Groves Conference on Marriage and the Family; National Women's Studies Association; Society for Research on Adolescence. (5) NCFR's ability to place family issues on the national agenda depends in large measure upon our ability to connect with and speak to the social, economic, and technological changes families now confront. A key aspect of my role as a member of the Nominating committee will be to facilitate the emergence of a visionary leadership sensitive to issues of diversity and capable of building organizational consensus around the critical issues of the 1990s.



Stephan Bollman CFLE. (1) Professor of Family Studies/Dept. of Human Development and Family Studies and director of K-State Family Center, KS State University. (2) Coordinator of Ph.D. in Home Economics and coordinator of Research Office, KS State University. (3) Member and chair, Osborne Award committee; member of Education and Enrichment, Family Discipline, Research and Theory Sections; Steering committee for Consortium of Family Science Dept. and co-chair of ad hoc CFLE committee; Affiliated Councils: state president, treasurer, board member, KS Council on Family Relations. (4) American Home Economics Association, Child Development and Family Relations and Research Sections; Center for the Family board of advisors; AHEA's official representative to NCFR; AHEA's Commission on Undergraduate Programs; editorial board, *Home Economics Research Journal*. (5) The Nominating committee should seek balance of age, gender, occupation, race, etc., for the different positions to be filled by election. I would seek individuals who are committed to NCFR goals, that support applied activities like the journal, *Family Relations*, the CFLE program, and the pre-conference Theory and Methods Workshop. It is essential that elected officials want input from the membership on major decisions. Networking of professionals from academic and applied human service programs needs to be promoted.



Judith Fischer Ph.D. (1) Professor of Human Development and Family Studies, TX Tech University. (2) Associate professor of Home and Family Life, TX

Tech University. (3) Presenter at annual conference; editorial board, *Family Relations*; reviewer, *Journal of Marriage and the Family*; member, Family Policy and Research and Theory Sections. (4) Groves Conference on Marriage and the Family; AHEA; International Society for the Study of Personal Relations; Society for Research on Adolescents. (5) If elected to the Nominating Committee, I will strive to locate (and convince to run) for office outstanding candidates. These candidates will be responsive to the diverse needs of the membership as well as to the enhancement and well-being of NCFR itself.



Catherine Gilliss. (1) Associate professor and director, Family Nurse Practitioner Program, University of CA-San Francisco. (2) Associate professor, School of Nursing, University of Portland. (3) Chair and vice chair, Family and Health Section; Board of Directors; Feminism and Family Studies Section; Nursing Focus Group; editorial board, *Family Relations*; contributor to NCFR Presidential Report, "2001: Preparing Families for the Future." (4) Fellow, American Academy of Nursing; Groves Conference; Society for Teachers of Family Medicine; American Nurses Association; Sigma Theta Tau. (5) The vitality of a voluntary organization such as NCFR is dependent upon leadership that is visionary yet respectful of past traditions. The Nominating committee must identify leaders with those qualities to serve our organization. Future ballots should offer diverse choices in gender, ethnicity, and disciplinary perspective.



James M. Harper Ph.D. (1) Associate dean, College of Family, Home, and Social Science and professor, Dept. of Family Sciences, Brigham Young University, Provo, UT. (2) Research director, Rocky Mountain Family Institute, Orem, UT, and private family therapy practice. (3) presenter at annual conferences; member, Family Therapy Section. (4) Chair, Elections committee, American Association for Marriage and Family Therapy; clinical member, approved supervisor, and fellow in American Association for Marriage and Family Therapy; board member and president-elect, UT Association for Marriage and Family Therapy; member,

See vitas
on page 12

Candidates share vitas, platforms

Here are biographical sketches for candidates for office in NCFR. In addition to races for national offices and the national nominating committee, elections are being held by the following Sections: Family Policy (formerly Family Action), International, Religion and Family Life, and Research and Theory. Photos are included where candidates have submitted them.

Biographical data is included on the following points:

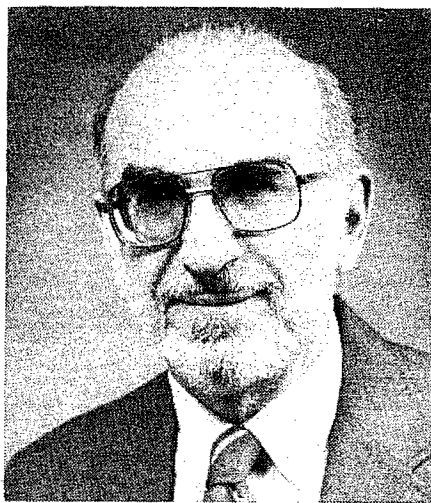
- (1) candidate's present professional position;
- (2) candidate's immediate past professional position;
- (3) past and present participation in NCFR activities;
- (4) Past and present related activities;
- (5) platform

Ballots will be sent by April 1, 1991, to NCFR members who have active status memberships. All ballots must be RETURNED TO NCFR HEADQUARTERS WITH POSTMARKS NO LATER THAN MAY 1, 1991.

President-elect



Patricia Kain Knaub, Ph.D. (1) Professor of Family Relations and Child Development and Dean, College of Home Economics and Agricultural Experiment Station, OK State University. (2) Professor of Human Development and the Family and associate dean, College of Home Economics, University of NE-Lincoln. (3) Board of Directors; Education and Enrichment Section chair; Osborne Award committee; Membership committee; Affiliated Councils Nomination committee; consultant to the Committee on Standards and Certification; reviewer, *Family Relations*, *Journal of Marriage and the Family*; president, NE Council on Family Relations. (4) American Home Economics Association; Association of Administrators of Home Economics. (5) NCFR's future success will largely depend upon the organization's ability to focus on divergent membership of family professionals on the overriding purpose of strengthening the knowledge base upon which families are understood and served. Endemic is the need for an organization which appreciates and supports both applied and basic research including its accurate and timely dissemination and application. As president, I would work diligently toward these goals.



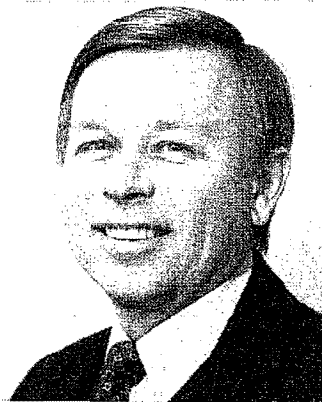
Hyman Rodman, Ph.D. (1) Excellence Foundation Professor of Child Development and Family Relations, University of NC at Greensboro. (2) Professor and senior research associate, Merrill-Palmer Institute. (3) Board of Directors; Nominating committee; associate editor, *Journal of Marriage and the Family*; Sections: chair, International; public policy committee, Family Policy; member and/or presenter, Research and Theory, Feminism and Family Studies, Theory and Methods workshop; Affiliated Councils: NC Family Life Council, presentations and keynote address. (4) American Sociological Association; Canadian Sociology and Anthropology Association; American Home Economics Association; Society for the Study of Social Problems; American Association for the Advancement of Science (Fellow). (5) I will carry out the constitutional duties of the office to the best of my ability, working cooperatively with committees, the Board, and the national office. I will work to enhance the professional contributions and status of NCFR, its special interest Sections, and the Affiliated Councils. I will support the current efforts of the CFLE Task Force to find ways of maintaining the strength and viability of the CFLE program. I will favor enhanced recognition and support for the varied publications of NCFR and for the critically important roles played by our editors and associate editors.

Program Vice President-elect



William J. Doherty. (1) Professor, Family Social Science Dept. and director of the Marriage and Family Therapy Program, University of MN. (2) Associate professor, Dept. of Family Medicine, University of OK Medical School. (3) Chair, Family and Health Section; Board of Directors; Reuben Hill Award committee; Family Therapy Section mission committee. (4) American Association for Marriage and Family Therapy; Society of Teachers of Family Medicine; American Psychological Association; Groves Conference; American Family Therapy Association. (5) My main

responsibility would be to provide leadership for the 1993 annual conference, including proposing a stimulating conference theme. I am considering two themes: a) "Families and Health," an area of growing interest in the family field; and b) "The Family Field as a Moral Enterprise," a theme that reflects the increasing awareness that we inevitably work from values and ethical positions about family life. In addition to conference leadership, I will exercise my Board responsibilities to help NCFR regain its equilibrium after a difficult period of change and turmoil. We need renewed coherence and energy for our important organizational mission.



Dennis Orthner. (1) Professor of Families and Children, School of Social Work, University of NC at Chapel Hill. (2) Professor of Family and Child Development and director, Center for Work and Family Issues, University of GA. (3) Board of Directors; Executive committee; Program committee; chair, pre-conference Theory and Methods Workshop; chair, Commission to Review the Structure of NCFR; vice-chair, Research and Theory Section; Nominating committee, Family Policy Section; Affiliated Councils: Board of Directors, Research committee, chair of Long Range Planning committee, FLC of NC. (4) American Sociological Association; Fellow, Inter-University Seminar on Annual Forces and Society; Society for Research on Adolescence. (5) The program of NCFR should reflect the diversity of interests and needs of our members. Our organization is multi-disciplinary and has a rich history of stimulating interaction between those involved in family research, theory, practice, teaching and policy. I believe our strength comes from our diverse traditions and the knowledge we have gained from one another over the years by attending NCFR conferences, and interacting with one another over the months and years that follow each meeting. With this premise, I believe the NCFR program should maximize opportunities for exchanging ideas, especially across traditional discipline and research-practice boundaries.

Secretary



Catherine S. Chilman. (1) Professor Emeritus, University WI-Milwaukee;

presently involved in scholarly writing and consulting on family issues. (2) Professor, Family Relations and Public Policies, Graduate School of Social Welfare, University of WI-Milwaukee. (3) Board of Directors; assistant editor, *Journal of Marriage and the Family*; Family Policy Section; paper presenter at conferences; reviewer, *Journal of Marriage and the Family*. (4) Fellow and member, American Psychological Association; National Association of Social Workers; NASW Board of Delegates; Groves Conference on Marriage and the Family. (5) The NCFR is an extremely important organization since it brings together the numerous disciplines with a strong interest in the many facets of the family scholarly and professional fields. In my view, it is essential that the organization remain active and gain further strength and that all major decisions be arrived at democratically with full membership participation to the maximum extent possible. Now that, most fortunately, NCFR is free of debt, there should be a careful cost-benefits reassessment proposed for programs of the future. Costs/benefits analyses should be qualitative as well as quantitative.



Marie W. Osmond, Ph.D. (1) Associate professor of Sociology, FL State University. (2) Assistant professor of Sociology, FL State University. (3) Vice-chair, Feminism and Family Studies Section; vice-chair, Research and Theory Section; chair, Theory and Methods Workshop; chair, Burgess Award committee; Nominating committee; Publications committee; Student Award committee; associate editor, *Journal of Marriage and the Family*, *Journal of Family Issues*, *NCFR Monograph Series*. (4) American Sociological Association, chair, Family Section; Council, Sex and Gender Section; Committee on the Status of Women in Sociology; Society for the Study of Social Problems, vice-chair, Family Division; Sociologists for the Study of Women in Society, secretary; associate editor, *Gender and Society*. (5) Being an inveterate note taker, even without official sanction, I am well-prepared for the position of secretary. Being involved in NCFR for all of my professional career and deeply committed to family social science, I agreed to run for this office primarily to strengthen the representation of feminist family scholars on the board. I sincerely believe that integrating gender and family studies is vital for renewing the enthusiasm of the membership and increasing the influence of NCFR both professionally and politically.

Treasurer



Thomas Holman Ph.D. CFLE. (1) Associate professor of Family Science, Brigham Young University. (2) Associate professor of Family Living, University of WI-Stout. (3) Past-president, UT Council on Family Relations; editorial board, *Family Relations*, Special Collections Collector, *Family Relations*; member, Theory and Research Methods Workshop, Family Discipline and Education and Enrichment Sections; president and program chair, UT Council on Family Relations; Board of Directors, WI Council on Family Relations; Student and New Professional representative, NCFR Publications committee. (4) President, Family Science Consortium; editorial board, *Family Science Review* and *Family Perspective*; Groves Conference on the Family; American Home Economics Association. (5) As treasurer of NCFR, I would press for fiscal responsibility and wise and prudent planning for future financial needs. I would pay particular attention to financial decisions that affect the ability of NCFR to meet the professional needs of as broad a spectrum of the membership as possible. As a member of the Board of Directors, I would represent the view that NCFR is a **multi-disciplinary and multi-paradigm organization** that is directed to serving the professional needs of a broad spectrum of family professionals in a variety of settings and occupations, and not just traditional social science researchers at large institutions.



Joe F. Pittman Jr. Ph.D. (1) Associate professor of Family and Child Development, Auburn University. (2) Assistant professor of Family and Consumer Studies, University of UT. (3) Board of Directors; vice-chair, Family Discipline Section; associate editor, *Family Relations*; Student Award winner, 1984. (4) Groves Conference; American Psychological Association. (5) A treasurer's most important commitment is to be diligent and thorough in record keeping, and responsible as a player in decision making. Part of being a responsible advisor, I believe, is being responsive to the membership, ensuring that those to be affected by financial decisions are aware of them and able to have a voice in their shaping. If elected, I will work to be a responsible and responsive treasurer. I am resolved to work toward maintaining a positive, supportive climate in the NCFR.

Nominating committee

David Baptiste Jr. (1) Director of Clinical Services, HCA Sun Valley Hospital, El Paso, TX. (2) Counseling psychologist, MN State University. (3) Vice president, Family Therapy Section; chair, Ethnic Minorities Section; Nomination committee of the Association of Councils; regional representative, region 6. (4) AAMFT, clinical member, Approved Supervisor, Fellow; APA; AACD. (5) As a member of the Nominating committee, I will make every effort to nominate election slates that allow for a broader representation of members than has been the case in the past. NCFR is rich with members who, if given the opportunity, will be happy to serve. Consequently, I see my role as a member of the Nominating committee, as serving NCFR by providing opportunity for a greater number of members to serve.



Brian K. Barber. (1) Director, Program for Adolescent Research, Center for Studies of the Family, and assistant professor of Sociology, Brigham Young University. (2) Assistant professor of Child and Family Studies, University of TN, Knoxville. (3) Member of Research and Theory and International Sections. (4) Society for Research on Adolescence and Society for Research in Child Development. (5) The purpose of the Nominating committee is to select slates of candidates for several general NCFR offices which have important decision-making responsibility. Priority criteria I would use in the selection process would be that the slate of candidates fairly represent the major constituencies within the NCFR membership, that individual candidates have demonstrated administrative and leadership experience, and that they are sufficiently well-known within NCFR to enhance their "electability." In accomplishing these goals, I would consult extensively with NCFR members in order to be adequately acquainted with potential candidates and thoroughly review their qualifications for the respective offices.



Patricia Bell-Scott Ph.D. (1) Associate professor, Human Development and Family Studies and Women's Studies, Storrs, CT. (2) Assistant EO and assistant to the president, MA Institute of Technology and adjunct research associate, Wellesley College Center for Research on Women. (3) Secretary-treasurer, Family Policy Section; Ethnic Minorities Section; Feminism and Family Studies Section; Family Discipline Section; Family and Health Section; Qualitative Family Science Network; SE Council on Family Relations; ad hoc reviewer, *Family Relations* and

Journal of Marriage and the Family. (4) American Sociological Association; division 35, American Psychological Association; Groves Conference on Marriage and the Family; National Women's Studies Association; Society for Research on Adolescence. (5) NCFR's ability to place family issues on the national agenda depends in large measure upon our ability to connect with and speak to the social, economic, and technological changes families now confront. A key aspect of my role as a member of the Nominating committee will be to facilitate the emergence of a visionary leadership sensitive to issues of diversity and capable of building organizational consensus around the critical issues of the 1990s.



Stephan Bollman CFLE. (1) Professor of Family Studies/Dept. of Human Development and Family Studies and director of K-State Family Center, KS State University. (2) Coordinator of Ph.D. in Home Economics and coordinator of Research Office, KS State University. (3) Member and chair, Osborne Award committee; member of Education and Enrichment, Family Discipline, Research and Theory Sections; Steering committee for Consortium of Family Science Dept. and co-chair of ad hoc CFLE committee; Affiliated Councils: state president, treasurer, board member, KS Council on Family Relations. (4) American Home Economics Association, Child Development and Family Relations and Research Sections; Center for the Family board of advisors; AHEA's official representative to NCFR; AHEA's Commission on Undergraduate Programs; editorial board, *Home Economics Research Journal*. (5) The Nominating committee should seek balance of age, gender, occupation, race, etc., for the different positions to be filled by election. I would seek individuals who are committed to NCFR goals, that support applied activities like the journal, *Family Relations*, the CFLE program, and the pre-conference Theory and Methods Workshop. It is essential that elected officials want input from the membership on major decisions. Networking of professionals from academic and applied human service programs needs to be promoted.

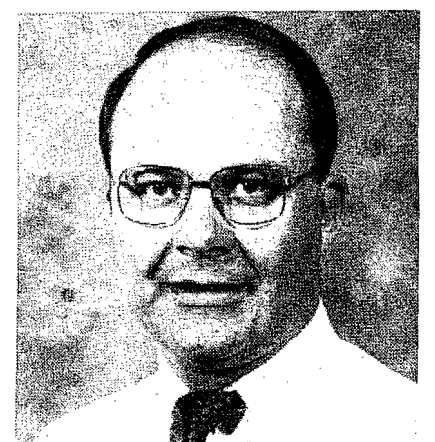


Judith Fischer Ph.D. (1) Professor of Human Development and Family Studies, TX Tech University. (2) Associate professor of Home and Family Life, TX

Tech University. (3) Presenter at annual conference; editorial board, *Family Relations*; reviewer, *Journal of Marriage and the Family*; member, Family Policy and Research and Theory Sections. (4) Groves Conference on Marriage and the Family; AHEA; International Society for the Study of Personal Relations; Society for Research on Adolescents. (5) If elected to the Nominating Committee, I will strive to locate (and convince to run) for office outstanding candidates. These candidates will be responsive to the diverse needs of the membership as well as to the enhancement and well-being of NCFR itself.



Catherine Gilliss. (1) Associate professor and director, Family Nurse Practitioner Program, University of CA-San Francisco. (2) Associate professor, School of Nursing, University of Portland. (3) Chair and vice chair, Family and Health Section; Board of Directors; Feminism and Family Studies Section; Nursing Focus Group; editorial board, *Family Relations*; contributor to NCFR Presidential Report, "2001: Preparing Families for the Future." (4) Fellow, American Academy of Nursing; Groves Conference; Society for Teachers of Family Medicine; American Nurses Association; Sigma Theta Tau. (5) The vitality of a voluntary organization such as NCFR is dependent upon leadership that is visionary yet respectful of past traditions. The Nominating committee must identify leaders with those qualities to serve our organization. Future ballots should offer diverse choices in gender, ethnicity, and disciplinary perspective.



James M. Harper Ph.D. (1) Associate dean, College of Family, Home, and Social Science and professor, Dept. of Family Sciences, Brigham Young University, Provo, UT. (2) Research director, Rocky Mountain Family Institute, Orem, UT, and private family therapy practice. (3) presenter at annual conferences; member, Family Therapy Section. (4) Chair, Elections committee, American Association for Marriage and Family Therapy; clinical member, approved supervisor, and fellow in American Association for Marriage and Family Therapy; board member and president-elect, UT Association for Marriage and Family Therapy; member,

See vitas
on page 12

Vitas from page 11

International Communication Association. (5) The purpose of the Nominating committee is to provide excellent candidates for the voting ballot of officers for NCFR. This task requires broad knowledge of the membership and the ability to seek input about potential candidates from many sources, including state/regional presidents and Section chairs. My experience as a member and chair of the AAMFT Elections committee has given me a valuable education to be able to understand the process and fulfill this assignment. My major goal would be to provide a ballot of highly qualified candidates that represent the needs and membership of the organization.



Patrick C. McKenry CFLE. (1) Professor, Dept. of Family Relations and Human Development, The OH State University. (2) Associate professor, Dept. of Family Relations and Human Development, The OH State University. (3) Chair, CFLE Continuing Education committee; member, Finance committee; chair, NCFR Film Competition; associate editor, *Family Relations*; member, OH Council on Family Relations. (4) Groves Conference on Marriage and the Family; American Public Health Association; American Sociological Association. (5) As a member of the Nominating committee, I would be interested in locating for leadership positions, those individuals representative of the many professional interests in the organization. These candidates for national office should have a strong commitment to the total mission of the NCFR, and a previous background of support for the organization at state, regional, and/or national levels should be clearly established. A sensitivity to minority issues and concerns should likewise be present. I would hope that the Nominating committee can devote quality time to undertaking a systematic search for strong and capable leadership.



Ollie Pocs Ph.D. (1) Professor of Sociology, IL State University. (2) Associate professor of Sociology, IL State University. (3) NCFR Exhibits coordinator; IL Council on Family Relations Board of Directors, Nominating committee, newsletter editor. (4) American Association of Sex Educators, Counselors and Therapists; American, Midwest and IL Sociological Societies. (5) Having served as president of the IL Council on Family Relations and through the work of several other organizations, I have been convinced

of the importance of an organization's officers. They serve as the ambassadors and as an important imprint of the whole organization. As a Nominating committee member, I would endeavor to search out candidates with some of the following qualities: a clear vision of the future based on the organization's history; innovative fiscal policy coupled with fiscal responsibility; attentive regard for membership, their preferences and numbers; and always an optimistic outlook for the future of NCFR.



Virginia Sibbison. (1) Executive director of Welfare Research, Inc., New York, NY. (2) Assistant professor, College of Human Development, PA State University. (3) Member, Research and Theory and Family Policy Sections; Fund Raising committee; Affiliated Councils: NY Council on Family Relations, member, president, treasurer. (4) Groves Conference on Marriage and the Family, member and treasurer; American Public Welfare Association; Orthopsychiatric Association; American Public Health Association. (5) The Nominating committee has a challenging role--the identification of individuals who 1) understand how a non-profit, membership organization functions in today's highly competitive arena; 2) can be helpful in the challenging and difficult process of building and managing a budget; 3) have insight into how to broaden the financial base of NCFR through either expansion of reimbursable services provided by the organization or by the garnering of additional funding streams (e.g., foundation or corporate support); and 4) will be able to aid in the long-range planning process by addressing where and how NCFR can maintain a "niche" for itself in the future. The Nominating committee can play a significant role in expanding the type of individuals serving the organization by the inclusion of individuals with a wide variety of backgrounds.



Dena Targ. (1) Associate professor and extension specialist, Dept. of Child Development and Family Studies, Purdue University. (2) -- (3) Member, Education and Enrichment, Research and Theory, and Feminism and Family Studies Sections; reviewer, *Family Relations* and *Journal of Marriage and the Family*; chair and member, Program committee, IN Council on Family Relations. (4) North Central Sociological Association, president and treasurer; American Sociological Association; Sociologists for Women in Society; American Home Economics

Association. (5) As a member of the Nominating committee of NCFR, I would endeavor to see that the diversity of NCFR membership, in content interests, approaches, work settings, and geographical location, is represented on the ballot. In addition, I would pay attention to the inclusion of women and minorities. I am especially sensitive to professional heterogeneity because I am both an applied and research-oriented professional. I belong to both the Education and Enrichment and Research and Theory Sections. Moreover, I have had experience as the president of the North Central Sociological Association, paying attention to diversity in appointing committee chairs.



Connor Walters Ph.D. (1) Assistant professor, Dept. of Family, Child and Consumer Sciences, FL State University. (2) Adjunct professor, Dept. of Child, Family and Consumer Studies. (3) Member, Research and Theory and Education and Enrichment Section; SE Council on Family Relations, program committee. (4) Society for Research in Child Development; Groves Conference on Marriage and the Family; Southern Association for Children Under Six; American Home Economics Association. (5) NCFR is an organization whose strength lies in its diversity--women and men, minority and majority who are educators, researchers, practitioners and students dedicated to improving the lives of families. My goal as a member of the Nominating committee is to insure that candidates presented for office are not only outstanding professionals, but are representative of the complex composition and interests of our membership.

Student/New Professional Representative



Linda A. Airsman. (1) Assistant professor of Sociology, Ferris State University, Big Rapids, MI. (2) Research analyst, UT Dept. of Social Services Division of Youth Corrections. (3) Feminism and Family Studies Section member. (4) American Sociological Association; Sociologists for Women in Society; Ferris State University Professional Women Association. (5) Top priority: Development of a long term plan for Student/New Professional affairs. The long term plan will be designed to communicate purpose, provide direction and an overall coherency to actions by the office.

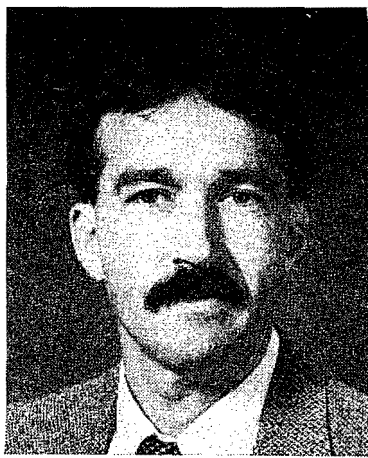
Carol A. Morgaine. (1) Assistant professor, Family Studies Dept., University of Alberta, Canada. (2) Teaching and research assistant, University of MN, and project director for Process Parenting, Chrysalis and MN Dept. of Human Services, Chemical Dependency Division. (3) MN Council on Family Relations, treasurer; presenter, annual conference. (4) National Association for the Education of Young Children, first and second vice president for MN chapter; Omicron Nu Honor Society; student representative on Child Abuse Certificate Faculty Interdisciplinary committee, University of MN; member, panel of experts for Higher Order Thinking Project, University of MN. (5) Having been a family practitioner for many years, I am eagerly beginning my career as scholar/researcher. If elected, I expect to expand current efforts to include diverse views from the under-represented voices of students/new professionals. I plan to seek ideas for accomplishing the desired ends from students and new professionals. My own ideas include creating a recruitment brochure to encourage student NCFR memberships, establish a regular "positions available" column in the REPORT, and solicit student/new professional conference presentations and articles for *Family Relations'* New Professional Section.

Family Policy Section

Chair



Elaine Anderson, Ph.D. (1) Associate professor, Dept. of Family and Community Development, University of MD. (2) Assistant professor, University of MD. (3) Vice-chair, Family Policy Section; 1991 Program Advisory committee; Public Policy committee; National Coalition on AIDS and Families, Steering committee; Publicity co-chair, annual conference; treasurer, DCFR; manuscript reviewer, *Journal of Marriage and the Family*, *Family Relations*, *Journal of Family Issues*. (4) American Psychological Association, Division of Family Psychology; Society for the Psychological Study of Social Issues. (5) I believe it is important to identify and develop a working relationship with the new Vice president for Public Policy, the Public Policy committee; and the NCFR's Washington representative. I would work to establish an agenda with these entities. I also would work to establish an expanded role for this Section's focus groups in Section activities. Finally, I would like to see the many members of this Section empowered to develop and implement activities for the Section. I would set as a final agenda, to involve more of our members to integrate family policy activities across the Sections.

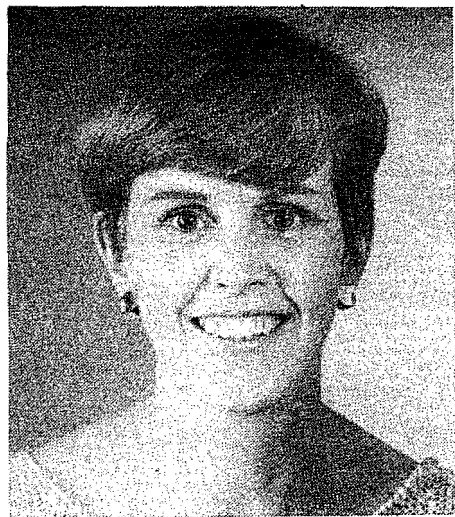


Kerry Daly, Ph.D. (1) Assistant professor, Family Studies, University of Guelph, Canada. (2) -- (3) Adoption focus group chair; president, Canadian Professionals Network; member, Qualitative Family Research Network. (4) American Sociological Association; Canadian Sociology and Anthropology Association. (5) My own interest in family policy is rooted in two research projects: One is a national study of adoption policy in Canada, and the other has to do with workplace policies that serve as barriers and supports to the fatherhood role. I believe that the Family Policy Section should serve as the nexus between theory, research and practice. The new conference format is compatible with this aim in so far as it provides an opportunity to hold symposia on critical family issues that would bring together those working in academic fields with those in government administration, family practice and corporate management. Policy issues that I would see as priorities are: aging, reproductive technologies, and the work-family interface.

Vice Chair



B. Kay Pasley (1) Professor, Human Development and Family Studies, CO State University, Ft. Collins. (2) Family Studies Dept., University of KY. (3) Co-chair, Remarriage and Stepparenting focus group; Student Awards committee; Reuben Hill Award committee; Nominating committee; Local Arrangements committee; Western Council on Family Relations, newsletter editor; executive board; chair, Family Policy Section; member, Family Policy, Research and Theory, Family Discipline, Feminism and Family Studies. (4) Families in the 90s: member, national steering committee; CO Families in the 90s, chair, steering committee; National Association of the Education of Young Children; Society for Research in Adolescence; Stepfamily Association of America. (5) Increasing the integration and application of family science research with issues of public policy would be an important goal of the Family Policy Section. Also, working with the chair to broaden the Section's membership and better meet members' needs and interests would be a second goal.



Denise Skinner (1) Professor, Family Science, University of WI-Stout. (2) Graduate research associate, Family Stress and Coping Project, University of MN. (3) Nominating committee; member, Family Policy and Education and Enrichment Sections; Work and Family focus group; presented papers at annual conferences; presider and discussant at Family Policy and Education and Enrichment sessions and past master lecturer; reviewed papers, for Family Policy Section; member, WI Council on Family Relations. (4) Member, Groves Conference on Marriage and the Family; American Home Economics Association, member and reviewer for *Journal of Home Economics*; WI Home Economics Association, Research Section chair. (5) I believe that the Vice Chair of Family Policy could assume significant responsibility in planning the Section's contributions to the annual conference programs. In addition to organizing and implementing the review process for submitted proposals, the Vice Chair could, in collaboration with the Chair, recruit notable policymakers, family advocates, etc., as plenary speakers or panelists. I would like to see the Family Policy Section become more visible within NCFR and on the program at annual conferences. Sponsoring plenary speakers would be one way to do this. Another effort that I would like to see the Section undertake is that of encouraging the NCFR membership to be more active individually as family advocates. Policy "alerts" or reminders sent to Section membership, which supplement policy information in the REPORT, might be one way of doing this. Finally, the vice chair's role is to support and assist the chair in administering the Section's activities throughout the year.

Secretary/Treasurer



Suzanna Smith, Ph.D. (1) Assistant professor, Human Development, Dept. of Home Economics, University of FL. (2) Research and teaching assistant, Dept. of Child and Family Development, University of GA, Athens. (3) Family Policy, International, Feminism and Family Studies, member; FFS mentoring committee; abstract reviewer; discussant; SE Council on Family Relations first vice president for finance; member long range planning committee; SCFR annual conference program chair; co-chair, student volunteers committee; NCFR annual conference program committee. (4)

American Sociological Association; National Association of Social Workers; Association for Women in Development. (5) In addition to fulfilling the expected duties of this office, I will work with other Section officers and members to define the direction of the Section, as policy becomes its explicit focus. My substantive contributions would be in the areas of rural economic change and development, and work, unemployment and job training. I have a particular interest in policies and programs that affect middle-aged and older women, women of color, and working class and low income families. My experience in social work, research, and extension will facilitate the translation of research and program results into information that can be used by policy makers and the public.

Kay Young-McChesney, Ph.D. (1) Assistant professor of Sociology, University of MO-St. Louis. (2) Assistant professor of psychiatry, University of Pittsburgh. (3) Student/New Professional representative to the Board of Directors; NCFR Student of the Year Award winner, 1985. (4) ASA; APHA; SSSP; SWS. (5) I will be happy to serve, if elected. However, I would warn you that I'm not particularly good at taking minutes of meetings.

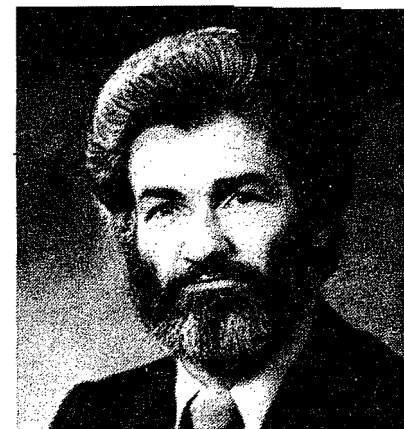
International Section

Chair



Helena Z. Lopata. (1) Professor of Sociology, Loyola University, Chicago. (2) Associate professor of Sociology, Roosevelt University. (3) Burgess Award; biographical presentation. (4) Family Research committee, Council; International Sociological Association; Distinguished Scholar Award; Family Division of Society for the Study of Social Problems; American Sociological Association, awards policy committee; Society for the Study of Symbolic Interaction; Gerontological Society of America, former vice president. (5) The increasing interdependence of the world requires us to understand as much as possible the societal differences. The family (in its numerous forms and variations) is the basic foundation of societal life, and thus needs special understanding. Besides, families, in their formation, presence and dissolution, are a fascinating subject of scholarly study. I hope to continue the good work of this Section in developing international conferences, the extensive bibliography of sources and the now expanding interest in qualitative research. I am especially interested in learning more, with the help of the Section, about the positive trends toward interdependence among family members and other similar primary relationships.

Vice Chair



John F. Peters, Ph.D. (1) Professor of Sociology and Anthropology, Wilfrid Laurier University, Waterloo, ONT, Canada. (2) At present position since 1973. (3) Presented papers in NCFR symposia, International Section; chaired sessions; Nominating committee, International Section. (4) Canadian Sociology and Anthropology Association, Family Research Section. (5) I would seek to have a greater visible presence of the International Section at NCFR. One method would be a symposium with speakers who integrate international family research and theory. We could have more small group thematic participation in which members present their papers. Cooperation with other Sections' symposia would be encouraged. A mailed list of our Section's members and their specific recent research would help us be more integrated.



Jacqueline Wiseman, Ph.D. (1) Professor of Sociology, University of CA, San Diego. (2) Professor of Sociology, San Francisco State University; visiting professor, Dartmouth, Yale. (3) Executive board; chair, Research and Theory sessions; Reuben Hill Award committee; Burgess Award Selection committee; editorial board, *Journal of Marriage and the Family*; associate editor, International Section, *Journal of Marriage and the Family*. (4) American Sociological Association; Groves Family Conference; Society for the Study of Symbolic Interaction; Society for the Study of Social Problems; Pacific Sociological Association. (5) The most important function for the International Section is to foster various types of exchanges--both informational and among members. In doing this, we become truly comparative researchers and thus broadened, our findings have more strength and significance. I would like to encourage exchange of bibliography, research data, and final reports. We need a mechanism whereby our members can, at minimal red tape and expense, become visiting scholars in the countries of other members for a reasonable period of time. Additionally, we should facilitate cross-cultural team research. Sub-committees to create a "clearing house" for information exchange, and to formulate a plan for scholarly visits and collaboration should be created.

Secretary/Treasurer

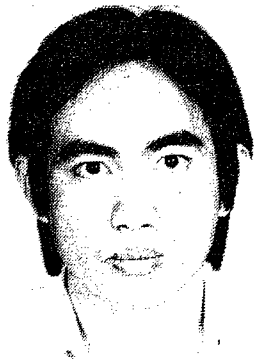


Alice Atkinson, Ph.D. (1) Assistant professor, Home Economics, University of IA. (2) Instructor, Home Economics, University of IA. (3) Affiliated Councils; Board of Directors. (4) American Home Economics Association; National Association for the Education of Young Children; National Family Day Care Association; Society for Research in Child Development. (5) My top priorities would be to 1) broaden the understanding of NCFR members in the U.S. of the concerns, knowledge, resources, and viewpoints of international researchers and teachers, and 2) facilitate participation of international members in NCFR at the annual conference and through publication and personal contacts. Ways to accomplish these goals might include sponsoring a social gathering during the annual conference, easing housing problems at the conference by matching international and U.S. roommates, facilitating communication through an electronic mail newsletter, and continued efforts to identify opportunities for travel to supply information about Section members and their activities.



John Lewis McAdoo, Ph.D. (1) Associate professor. (2)-- (3) Nominating committee; Ethnic Minorities, Research and Theory and International Sections, member. (4)-- (5) I plan to work diligently to increase the membership of the International Section and to raise the visibility of the Section within NCFR.

Student/New Professional representative



Irwanto, M.S. (1) Doctoral student in Family Studies, Purdue University; Fulbright-Hays scholarship recipient. (2) Lecturer and research associate at Atmajaya Catholic University, Jakarta,

Indonesia; drug prevention specialist for UNDP's sponsored project in INS. (3) -- (4) International Council of Psychologists, member; American Psychological Association, student affiliate; Indonesian Psychological Association, member. (5) Encourage international collaboration in research, publication, and education. Promote dialogue among students and new professionals on global issues through the International Section of NCFR.

Catherine Solheim (1) Assistant professor, Dept. of Family and Child Development, Auburn University. (2) Lake Co. Extension director, Home Economics and 4-H/Youth Development, MN Extension Service. (3) Strategic Planning committee; annual conference; Theory and Research workshop; International Section, member; Research and Theory Section, member; MN Council on Family Relations, family/parent education section secretary. (4) American Home Economics Association; International Federation for Home Economics; American Council on Consumer Interests; SE Regional Family Economics; Home Management Association. (5) As students and developing professionals, we are being socialized into the NCFR and the family field. But we cannot afford to be passive players in this process. We have a responsibility to be active agents of change and growth in both the organization and the field. As student/new professional representative, my goals would be 1) continue to develop and nurture a network of support among developing professionals as we learn a new culture, its customs, its rites of passage and 2) contribute to the organization by conveying our relatively new perspectives on crucial issues which will shape the future of the profession and the NCFR--our future.

Religion and Family Life Section Chair



Bron Ingoldsby, Ph.D. CFLE. (1) Professor of Family Science, Ricks College, ID. (2) Assistant professor of Family Studies, Kent State University, Kent, OH. (3) ID/MT Council on Family Relations, president; Religion and Family Life Section secretary/treasurer; Family Discipline Section, secretary/treasurer; chair of NCFR Filmstrip competition; student representative to NCFR annual conference committee. (4) Guest editor, *Family Science Review*; associate editor, *Journal of Comparative Family Studies*; vice president, ID/Ecuador Partners of the Americas; member, Student/Associate Involvement committee, AAMFT. (5) I am a charter member of the Religion and Family Life Section of NCFR and have not missed a Section business meeting since we started in 1984. I will continue to promote the research focus of our Section. I will resist any attempt by the Executive

Board to weaken the Sections by removing the Section presidents from the Board or having anyone other than the Section leaders decide which papers will be accepted for presentation at the NCFR annual conferences. The Sections are the lifeblood of the NCFR, and I will vigorously represent the interests of those who study the religion and family connection.

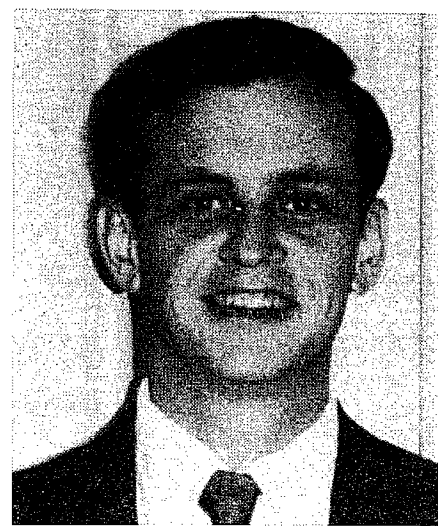


Darwin L. Thomas. (1) Professor of Sociology, Brigham Young University. (2) Assistant professor, Sociology, WA State University. (3) Theme section chair, "Death as a Family Crisis: War and Missing Persons;" president of Theory Construction and Research Methodology workshop; section chair, cross-cultural socialization research; invited inaugural address at creation of Religion and Family Life Section; organizer and moderator of panel, Research and Theory and Family Policy Sections. (4) American Sociological Association; Society for the Scientific Study of Religion; UT Council on Family Relations. (5) NCFR's strength lies in its ability to create meaningful relationships with other professional organizations--especially true in the interface between religion and family since multiple disciplines are interested in each social institution. Thus, my primary goal will be to develop linkages with such organizations (Society for the Scientific Study of Religion, for example). A second objective will be to increase the number of family/religion researchers' and practitioners' involvement in the Section activities. History of NCFR's first attempt at having a religion section (1950s) teaches that an imbalance of participants in either direction fails to sustain commitment to NCFR's work.

Vice Chair



Roger Ferris, Ed.D. (1) Pastor, licensed counselor, teacher of communication and family skills. (2) Same for 37 years. (3) Charter member, Religion and Family Life Section; local arrangements committee, Seattle annual conference. (4) Groves Conference; National Association of Marriage and Family Counselors, clinical member. (5) The Religion and Family Life Section is a stable member of the NCFR Section family. I would encourage continued development of the Section that would facilitate the integration of faith with the learning of family researchers and the creative use of the results where families live and mature. The Section should encourage more research in the positive effects of faith on the enrichment of total family life.

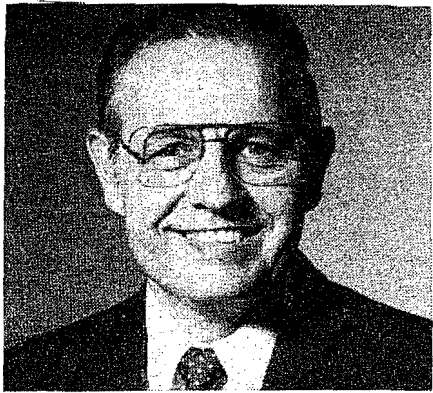


Ben Silliman, Ph.D., CFLE. (1) Assistant professor, Family and Child Studies, LA Tech University. (2) Learning skills specialist, KS State University. (3) Family Relations Council of LA, president; LA Council State Board; member, Religion and Family Life, Education and Enrichment Sections; Certified Family Life Educator; participant in CFLE groups. (4) Association of Couples in Marriage Enrichment; Family Resource Coalition; National Association for the Education of Young Children. (5) NCFR's Religion and Family Life Section is a unique setting for focusing on faith as a family strength, fostering preventive and therapeutic supports in the church, and examining the development of faith in family contexts. The Section has made positive steps to promote theory development, promotion and sharing of educational programs, and encouraging research on a variety of family and religion issues. These efforts need to be continued. Efforts to involve greater numbers of religious educators need to be initiated to expand participation in and the influence of the Section.

Secretary/Treasurer



Rosanne Farnden, M.A. (1) Marriage preparation coordinator, BC Council for the Family; sessional lecturer, School of Family and Nutritional Sciences, University of BC, Canada. (2) Youth coordinator, South Arm Church, Vancouver, BC, Canada. (3) Religion and Family Life, student/new professional representative; discussant, annual conference; staff member, BC affiliated council. (4) Canadian Home Economics Association; Canadian Association for Research in Home Economics. (5) In addition to maintaining accurate minutes of meetings and a sound accounting of financial standing, the secretary/treasurer is a member of the Section executive committee. Members of this committee must be committed to the continued growth and development of the Section. Key issues include membership recruitment, networking among members and increased submissions for the annual conference program. I am excited by the Section's decision to investigate the possibility of a multi-denominational forum to strengthen children and families. Such an effort will allow us to strengthen the Section and publicize the organization while using our expertise to serve the needs of families.



John B. Youngberg Ed.D., CFLE.

(1) Professor of Religious Education at Andrews University, Berrien Springs, MI; and director, Family Life International. (2) Same position for 17 years. (3) Certified Family Life Educator; presenter at annual conferences. (4) Founded and presents Marriage Commitment Seminars; member, Religious Education Association. (5) It is my desire to see the Religion and Family Life Section grow as a forum and means of basic research in the measurement of various dimensions of religiosity and its relation to the family. At the same time, curricular and field-based models of family religion should be actively promoted. Plans should be made to publish classic booklets summarizing measurement instruments, findings, and resources in the field. If elected as secretary/treasurer of the Section, I will continue the efforts of the past to maintain the RF Section in financial responsibility.

Research and Theory Section Chair



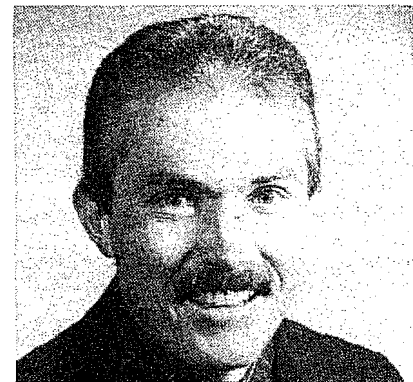
Maxine P. Atkinson, Ph.D.

(1) Associate professor and associate head, Dept. of Sociology, Anthropology, and Social Work, NC State University. (2) Assistant professor, NC State University. (3) Secretary/treasurer Research and Theory Section; Reuben Hill Award committee; editorial board, *Journal of Marriage and the Family*; Feminism and Family Studies, Ethnic Minorities, Research and Theory Sections, member; member, presenter, discussant at annual conference; pre-conference Theory and Methodology workshop. (4) Executive council, Southern Sociological Society; treasurer, Sociologists for Women in Society; nominating committee, Family Section, American Sociological Society. (5) I will strongly support the premise that research should be the central focus of not only this Section, but also of NCFR as an organization. In general, I define research as generating and disseminating knowledge. The numerous recent changes in NCFR have generated concern among our Section members as well as others. Research and Theory Section members have been very vocal about the new program format. How well the format serves us is an empirical question. We need to monitor this closely. Mechanisms must exist to adequately allow our input prior to institutionalization of major structural changes.



Catherine Surra, Ph.D. (1) Assistant professor, Child Development and Family Relationships, University of TX, Austin. (2) Associate professor of Family Studies, University of AZ. (3) Editorial board, *Journal of Marriage and the Family*; Research and Theory Section, Reuben Hill award committee and Nominating committee; Feminism and Family Studies, Student Award committee and Mentoring committee. (4) International Society for the Study of Personal Relationships; American Psychological Association; American Home Economics Association; Society for the Psychological Study of Social Issues; IA Network on Personal Relationships. (5) The Research and Theory Section has always been a vital contributor to its members and to NCFR. My goal is to build on that tradition. As Section chair, I would: (1) promote the involvement of scholars from different disciplines, of women, and of minority members; (2) seek feedback from Section members regarding program format changes implemented at the 1991 conference; (3) cooperate with the 1992 and 1993 program vice presidents to implement members' feedback; (4) work with other Section chairs to attract research-oriented plenary speakers of interest to many members; and (5) advocate Section goals on the Board of Directors and with NCFR's Executive Director and staff.

Vice chair



David Demo, Ph.D. (1) Associate professor, Dept. of Sociology, VA Tech. (2) Assistant professor, Dept. of Sociology, VA Tech. (3) Associate editor, *Journal of Marriage and the Family*; Reuben Hill Award committee; steering committee for National Symposium on the Well-Being of the Family. (4) American Sociological Association; Southern Sociological Society. (5) The Research and Theory section serves a central mission within NCFR. One of its main objectives is the encourage systematic empirical investigation of family relations, its correlates, and consequences. To this end, it is critical that we encourage research using a variety of methodological and theoretical perspectives. Research results can and should be communicated in a number of different presentation formats at our annual conferences, but it is essential that we maintain a peer review process for evaluating research and that we interpret and discuss research findings in terms of their implications for theory, future research, and practical applications.



Donna Sollie (1) Associate professor, Family and Child Development, Auburn University. (2) Associate professor, Human Development and Family Studies, TX Tech University. (3) Feminist teaching materials committee chair, Feminism and Family Studies Section; Research and Theory, Family Policy, Education and Enrichment Sections, member; presenter and presider, annual conference; editorial board, *Family Relations*; local arrangements and hospitality suite, annual conference; AL Council on Family Relations, Board member, awards committee; TX Council on Family Relations, program planning committee; SE Council on Family Relations. (4) International Society for the Study of Personal Relationships, board member, secretary/treasurer, membership committee; Groves Conference on Marriage and the Family; AAMFT. (5) Communications is the lifeblood of a successful organization. Through improved internal communications, we can build upon the strengths and diversity of researchers by maintaining an ongoing commitment to rigorous research and increasing active involvement in NCFR through such means as symposia. Through improved external communications, we can build the image of our discipline and make our research more accessible and comprehensible to those outside our field. As vice chair, I will work to strengthen both internal and external communications so that this Section can meet the needs of its members as well as helping bridge the gap between knowledge and application.

Secretary/treasurer



William Aquilino (1) Associate scientist, Center for Demography and Ecology, University of WI-Madison. (2) Senior study director, Institute for Survey Research, Temple University. (3) Research and Theory Section member; Feminism and Family Studies member. (4) Gerontological Society of America; American Association for Public Opinion Research; Institute on Aging and Adult Development, University of WI. (5) My goals as secretary/treasurer include: (1) working to enhance the quality of research presented in Research and Theory sessions at the annual conferences; (2) increasing NCFR members' interest in the Section, with an eye to increasing membership; and (3) insuring that the financial affairs of the Section are well-managed, and that funds are spent appropriately in furthering the aims of the Section. Achieving these goals will require close attention to the opinions

of Section members and of all who attend Research and Theory sessions at the annual conferences, as well as the willingness to work as a team with other Section officers and interested members.



F. Scott Christopher (1) Associate professor, Family Resource and Human Development, AZ State University. (2) Assistant professor, Child and Family Studies, University of NV-Reno. (3) Editorial board, *Family Relations*; reviewed abstracts for Feminism and Family Studies Section and for roundtable presentations for annual conferences. (4) International Society for the Study of Personal Relationships; IA Network for the Study of Personal Relationships; American Home Economics Association. (5) The Research and Theory Section of NCFR has a long tradition of promoting scholarship through the papers presented at the annual conference, through the pre-conference workshop, and through its publication efforts. I will work to support this continued effort if I am elected to the position of secretary/treasurer.

Divorce studied

The high level of divorce in many countries is still a relatively new phenomenon. The consequences present challenges for judicial procedures, professional practice, personal attitudes, and public policy. Many different kinds of responses have been made to these challenges, yet problems remain.

An opportunity to assess and work on the "Impasses of Divorce" will be provided May 12-15 at William Penn Hotel in Pittsburgh, PA, at a working conference organized by the Commission on Marriage and Interpersonal Relations of the International Union of Family Organizations. The event is offered in conjunction with the Association of Family and Conciliation Courts.

Janet Johnston of the Center for the Family in Transition will present a keynote address. Much of the conference work will be done in small groups, providing opportunities to exchange information and experiences in the international forum. A report of the proceedings will be published.

For more information contact IUFO, 28 Place St. Georges, 75009 Paris, France.

Conference

The 11th annual National Rural Families Conference will meet at KS State University, September 25-27, with the theme, "Children, Youth and Their Families."

Papers are due by April 15.

Formats include poster sessions, workshops and concurrent sessions. For more information contact co-directors Steve Bollman at 913-532-6984 or Charlie Griffin at 913-532-6953 or the KSU conference office at 800-432-8222 in KS or 800-255-2757 outside KS or write Family Center, Justin Hall KSU, Manhattan, KS 66506.

NCFR conference coordinator earns CMP

Cynthia Winter, NCFR annual conference coordinator and Affiliated Councils liaison, has earned her Certified Meeting Professional (CMP) designation.

The designation recognizes high standards of proficiency in meeting management demonstrated by substantial professional experience and superior examination performance.

Ms. Winter has been on the NCFR staff for 26 years. She has a bachelor's degree from MN Bible College. Last year she was one of 40 meeting planners in the U.S. selected to participate in a hotel training program through the American Society of Association Executives.

In addition to her NCFR responsibilities, Ms. Winter is the executive coordinator of the MN Christian Convention. She gives private piano lessons and has played at church and social functions for many years.

The CMP certification process is administered by the Convention Liaison Council, a coalition of 22 organizations representing the convention, meeting, trade



Cynthia Winter, CMP

show and exposition industry and travel and tourism industry. The first CMP exam was administered five years ago.

The program is governed by a 17-member Certification Board of Regents, appointed by the Convention Liaison Council. A psychometrician is hired by the Council to train the Board of Directors in

writing and administering examinations. Each of the directors is responsible for writing the questions in one portion of the exam.

Each examination includes 150 multiple choice questions on 25 functions that a meeting professional must perform under any of 17 conditions.

Ms. Winter participated in a study group with other Minneapolis-St. Paul area meeting planners before taking the three and a-half hour exam. Prior to sitting for the exam, she completed an application covering her experience in meeting planning.

A minimum of 75 points must be earned on the application before a meeting planner is qualified to sit for the CMP exam. A \$100 fee is charged for completing the application, and a \$240 fee is charged for the exam.

IMFL Volume 16 printed

Volume 16 of the hard copy **Inventory of Marriage and Family Literature** was printed March 15 and has been mailed to customers. It covers journal articles on family topics from September, 1989, through December 1990.

IMFL is the latest and most complete and comprehensive coverage of literature and research reported in the family field in one volume. Bibliographic citations can be searched through cross-referenced Key Word in Title Index, Author Index, and Subject Code Index.

For information on obtaining Volume 16 at very reasonable NCFR member prices, see the ad in this issue.

Your ballot will arrive in April

'91 Award nominations due

Call for Nominations for 1991 NCFR Awards!

DISTINGUISHED SERVICE TO FAMILIES AWARD

This award is given in recognition of those who have provided exceptional leadership and/or service to the cause of better family living. These contributions for "action" programs represent the importance of family relationships in the future rather than the past. **Who may be nominated:** National leaders in the family field, political figures, entertainers, volunteers who have played significant roles in helping families. **Nominees need not be NCFR members** to be eligible for this award, sponsored by the Association of Councils.

Mail nomination form and supporting documents to: T. Quentin Evans, 1007 Hilsamer Drive, North Manchester, IN 46962 (219-982-6300).

ERNEST G. OSBORNE AWARD

This award is presented in memory of Ernest G. Osborne, an outstanding family life educator, who served three terms as president of NCFR. This award is given to an NCFR member in recognition of excellence in the teaching of family relations. **Criteria for selection:** 1) Demonstrated excellence in the teaching of family relationships; 2) Membership in NCFR; 3) Current and probably future engagement in the teaching of family relationships; 4) Willingness to promote dissemination of knowledge through participation in professional meetings and/or to seek publication in the NCFR journals. The award is presented to one individual, but nominations are encouraged for teachers at **any level of education**. Send nomination forms and attach statement to indicate basis of nomination, listing names and addresses of three additional people to document nominee's qualifications. Mail to: Robert S. Pickett, Syracuse University, 603 Nottingham Rd., Syracuse, NY 13224 (315-443-4757).

MARIE F. PETERS ETHNIC MINORITIES OUTSTANDING ACHIEVEMENT AWARD

This award is presented in memory of Marie F. Peters, a distinguished scholar, researcher and practitioner, who served NCFR with distinction. This award is given to an NCFR member in recognition of excellence in contributions made in the area of Ethnic Minority Families.

Criteria for Selection: 1) Leadership; 2) Scholarship and/or service - research, publication, teaching and community service; 3) Contribution to the Ethnic Minorities Section; and 4) Contribution to the National Council on Family Relations.

The Award is presented to an individual, but nominations are encouraged in all areas identified above.

Send nomination form and attached statement to indicate basis of nomination, listing names and addresses of three additional people to document nominee's qualifications. Mail to: Alice E. Edwards, 444 North Capitol St. NW, #606, Washington, DC 20001 (202-624-8560).

STUDENT AWARD

This award is given to an NCFR graduate student member who has demonstrated excellence as a student with high potential for contributions to the field of family studies.

Criteria for selection: 1) A student currently enrolled in a Graduate Program whose work shows promise of a significant contribution to family studies. It is not assumed that research projects or other work be completed at the time of nomination; 2) Membership in NCFR for at least two years. Qualified students who are nominated will receive instructions for supplying other supporting credentials including: a) three additional letters of recommendation; b) brief (1-3 page) statement defining an important problem they see in the field of family studies and outlining possible steps toward its solution; c) a brief (1-3 page) description or summary of a personal program, research project, publication which they have done that is representative of the quality of their work and area of interest.

Nominations should be sent to Patricia Hyier Dyk, Department of Sociology, University of Kentucky, 500 Garrigus Building, Lexington, KY 40546-0215 (606-257-3228).

STUDENT/NEW PROFESSIONAL SMALL GRANT AWARD SPONSORED BY THE FEMINISM AND FAMILY STUDIES SECTION

The Feminism and Family Studies Section is sponsoring a new award which recognizes a research proposal that makes an outstanding contribution to feminist scholarship. The "Outstanding Research Proposal from a Feminist Perspective Award" is open to graduate students and new professionals (with up to 5 years post-doctoral work). A \$500 award is made. Proposals will be evaluated for the potential contribution to feminist scholarship and use of feminist frameworks.

Applications should include: a) an abstract of 100 words or less; b) a 5 page (maximum) proposal outlining the project's theoretical foundation, research methods, and potential contribution to feminist scholarship; and c) a half-page budget. Please submit five copies of your application.

The Award will be presented at the 1991 NCFR Annual Conference. A summary of the recipient's research results will be published in the *Feminism and Family Studies* Section newsletter.

Mail application form and supporting materials to Polly Fassinger, Department of Sociology, Concordia College, Moorhead, MN 56560 (218-299-3549).

NCFR AWARDS NOMINATION FORM

Instructions: Use **one** form for **each** person/organization you wish to nominate, and attach a form with documentation. Mail all materials to the chair designated for each award. Please duplicate this form if you wish to nominate more than one person or award.

Deadline for Nominations For All Awards: April 30, 1991

Name of Award for which you are nominating _____

Name of Nominee _____

Title _____
(if student, indicate program and institution)

Address _____

Phone Number _____

Names of 3 additional persons to document nominee's qualifications:
Name Address Phone

Signature of person nominating _____

Title and address of nominator _____

Phone number of nominator _____

In memoriam

David R. Mace

David R. Mace Ph.D., 83, 1961-62 NCFR president, died Dec. 1, 1990, in Black Mountain, NC.

He was born in Scotland and earned degrees from London, Cambridge and Manchester universities in England. He was a Methodist clergyman from 1930 to 1940. After founding the National Marriage Guidance Council in 1942, he served as its president until 1949.

He was professor of human relations at Drew University from 1949 to 1959. After serving with the American Association of Marriage Counselors (now AAMFT), he spent the following decade on the Bowman Gray faculty.

During his term as NCFR president, the first four sections (Research, Education, Counseling, and Special Emphases) were started.

In 1960, Mace and his wife, Vera, founded the Association of Couples for Marital Enrichment (ACME), now an international organization.

Mace was considered a major figure in the family field development for a half century. While he and Vera served as co-executives of what is now AAMFT, he contributed to family development and enrichment in such places as Samoa, Kenya, the Soviet Union, Sri Lanka and New Zealand. Recently the couple lived in retirement in Black Mountain, NC.

Mace wrote, or co-authored with Vera, 33 books, and authored approximately 1,500 professional and popular articles. He worked with the International Union of Family Organizations, the World Council of Churches, and other national governments. In 1984, the Maces received the AAMFT Leadership Award.

Survivors include his wife, Vera C.; daughters, E. Sheila Jagan of Mallorca, Spain, and Fiona Patterson, Harrisburg, PA; a sister; five grandchildren; and three

great-grandchildren.

Memorials may be sent to ACME, P.O. Box 10596, Winston-Salem, NC 27107.

Alice Mancill Nichols

Alice Mancill Nichols, 57, Tallahassee, FL, died Nov. 28, 1990, at Tallahassee Memorial Regional Medical Center. She was a long-time member of NCFR.

Services were held at Norwood Chapel Funeral Home, with eulogies given by her sons and by Dr. Sandra Halperin of Auburn and Kate Kerr of Tallahassee. Burial was in Fayette City Cemetery.

She was editorial assistant for *Family Therapy News*, formerly conducted her own business, Professional Office Services, and was executive secretary for the MI Interprofessional Association for Marriage, Divorce, and the Family; MI Association for Marriage and Family Therapy; and MI Society of Clinical Psychologists.

She was born in Chicago and raised in Tuscaloosa. She spent much of her adult life in MI and had lived in Tallahassee from 1973-1976 and since 1987.

She was a graduate of Tuscaloosa High School and earned a bachelor's degree and a Phi Beta Kappa key in only three years.

Survivors include her husband, Dr. William C. Nichols; a daughter, Camille Nichols of Atlanta; two sons, William Mancill Nichols, Atlanta, and David Nichols, Chicago; two sisters; five nephews and nieces; her mother-in-law; a sister-in-law and other relatives.

Memorials may be made to the University of Chicago Cancer Research Foundation, 1025 E. 57th St., Culver Hall, Rm. 405, Chicago, IL 60637.



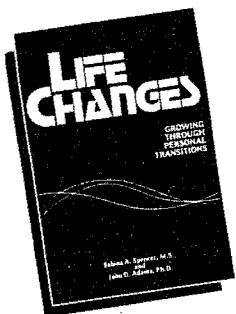
Feminism and Family Studies Awards

Michelle Clossick, right, was the recipient of the first annual "Outstanding Research Proposal from a Feminist Perspective Award." The Feminism and Family Studies Section presentation was made by Jessie Bernard during last November's annual conference in Seattle. --Photo by Wally Goddard.



Dr. Nazli Kibria, left, was awarded the "Outstanding Contribution to Feminist Scholarship Paper Award," from the Feminism and Family Studies Section during last November's NCFR annual conference. Making the presentation was Jessie Bernard. --Photo by Wally Goddard.

Extend Your Impact ... With These Resources for Clients



LIFE CHANGES: Growing Through Personal Transitions

Sabina A. Spencer, M.S. and John D. Adams, Ph.D.

Recessions, military actions, layoffs, mergers and acquisitions, plant closings — social and economic changes are unpredictable and inevitable. And personal transitions abound: births, deaths, retirement, divorce, relocation. *LIFE CHANGES* is the essential survival manual for understanding and dealing with change. Spencer and Adams are internationally renowned organization development consultants and workshop leaders. Their seven-step approach for handling transitions is used successfully around the world in universities, public agencies, and businesses large and small.

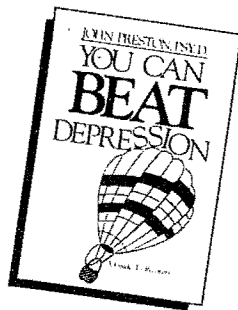
\$8.95 paperback 208 pages

YOU CAN BEAT DEPRESSION: A Guide to Recovery

John Preston, Psy.D.

Here's an easy-to-use resource for depressed clients and their loved ones. Concise, readable and easily accessible for people in need, this excellent book is an ideal adjunct to therapy. *YOU CAN BEAT DEPRESSION* helps readers assess the severity of their own conditions, differentiate among major types of depression, practice proven self-help procedures, understand and apply an integrative approach, and work cooperatively with a professional therapist. Clinical psychologist John Preston, as director of the depression clinic at a large medical center, has worked with thousands of depressed patients.

\$8.95 paperback 160 pages



Ask your local bookseller, or order direct: add \$2.25 shipping for first book, .25 for each additional book; CA residents add 6%.

WRITE FOR OUR FREE CATALOG!

Impact Publishers™
Post Office Box 1094
San Luis Obispo, California 93406

The next copy deadline for *REPORT* is May 15, 1991

CALL FOR PAPERS

Family Relations will be publishing a special collection of papers on the theme "Prevention Programs for Families and Children." This collection will include articles on primary as well as secondary prevention programs for families and children. Programs focusing on particular family structural types such as single parent families, premarital couples, newly married couples, families with adolescents, etc.; focusing on preventing particular behaviors such as teen sexuality/pregnancy, substance abuse, physical/sexual abuse, etc.; or doing innovative programming such as getting government and the private sector to work together in support of prevention programs, would be of special interest. Articles about small local programs as well as large national programs (such as Big Brothers/Big Sisters, Just Say No, etc.) that have proven successful are solicited. Papers should provide measures of effectiveness are particularly appropriate, and thought pieces on the philosophy and theory of programming for families and children or family program evaluation are also welcomed. The deadline for submitting articles is June 1, 1991. Instructions for authors are included in the January 1991 issue of *Family Relations*. Four copies of the manuscript and a nonrefundable \$15 processing fee should be sent to:

Thomas B. Holman
Department of Family Sciences
Brigham Young University
Provo, UT 84602
Checks must be payable to NCFR.

Inquiries about the special collection topic should go to Thomas B. Holman at the address above or by calling (801) 378-6704.

Sections prepare for conference events

Family and Health

As I write this column on February 14, my NCFR cells are in an anticipatory, not active, state. This is the time of year that Section chairs prepare themselves for an onslaught of program abstracts and corresponding flurry of activity around reviewing, communicating with authors, and planning the next annual conference. I am ready. Review checklists are drafted. Address lists are gathered. Seventeen brave reviewers are waiting (Thank you for volunteering!).

By the time you read this, the review team will be thoughtfully studying your proposals. In the next issue of **REPORT**, highlights of the 1991 Section program will be shared. I'll also address other issues needing our attention, such as Section by-laws. Stay tuned! Sandra K. Burge, Ph.D. Dept. of Family Practice, University of TX Health Science Center, 7703 Floyd Curl Dr., San Antonio, TX 78284.

Family Therapy

We will need a number of people to work at the 1991 conference, including session presiders and poster session representatives. If you are interested, please contact me.

As conference plans develop, NCFR Sections are allotted program spaces as follows, based on 1990 applications:

Section	%age of total Submissions
Family Therapy	7
Education and Enrichment	18
Ethnic Minorities	4
Family Policy	12
Family and Health Care	27
Family Discipline	1
Feminism and Family Studies	7
International	3
Religion and Family Life	3
Research and Theory	18

Section space allotments are based on the "number of section members and the number of proposals submitted to the section program committee for the preceding year's conference" and were made by the 1991 program chair.

Here are the minutes of the Section's most recent business meeting:

Minutes of the Family Therapy Section November 12, 1990 at the annual conference in Seattle, WA

1. Tony Jurich reported that the executive committee had decided to give two Family Therapy Faculty awards this year. The awards were presented to Robert Ryder and Karen Wampler during plenary sessions of the conference.
2. Sandy Stith presented the section financial report. The section has reserves of more than \$4000 and appears to be in a strong financial position.
3. The attending members voted to accept several changes in the by-laws.
4. Tony thanked section members for their support during his term of office.
5. Russ Crane began term as new chair of the section with Jennie Barr, Vice-chair, Karen Wampler, Secretary-Treasurer, Scot Allgood, Member at Large, and Rick Miller as Student/Young Professional member (continuing from last year's appointment until the 1991 meeting.) Russ thanked the outgoing members of the executive committee for their efforts in our behalf: Tony Jurich, Chair, Janice Linn, Vice-chair, Sandy Stith, Secretary-Treasurer, and Steve Anderson, Member at Large.

6. Russ proposed that the section establish an annual graduate student award to recognize outstanding achievement in research and other scholarly activity. Section members voted unanimously to accept this proposal.
7. Section members voted on their preferences for the sites of the 1995 and 1996 NCFR meetings for Russ to take to the Board Meeting. Russ reported that the 1992 meeting will be held in Orlando, 1993 in Baltimore and 1994 in Minneapolis.
8. Section members voted unanimously to oppose the new format for the conference. Members felt that this format would take away from the interactive nature of the family therapy oriented presentations. Russ will convey this sentiment to the program chair, Alexis Walker, and to the program committee.
9. Section members voted unanimously to oppose a fee increase for the annual meeting.
10. Nominations were solicited by Russ for people to be nominated to serve on the nominations committee. Jim Harper, Tony Jurich and Darren Adamson were nominated. These names were passed on to Brent Miller for inclusion on the ballot for the nominations committee. Brent will make the final decision on the final ten to twelve names to be on the ballot.
11. Members voted to continue having the section provide certificates of attendance for those participating in the workshops at the annual meeting.
12. Russ requested volunteers to work on the committees of the section including program, student award and the annual award.

Ask a friend to join the Section today!

Dr. Russell Crane, Section Chair, 258 TLRB-BYU, Provo, UT 84602; 801-378-3888 or 378-5623.

Feminism and Family Studies

I would like to open this report with an apology to all current and prospective members who were disappointed to find no FFS news in the last NCFR **REPORT**. It seems that the article I faxed to the NCFR headquarters was sent to another Twin Cities fax machine by mistake. Unfortunately, being a neophyte fax user at the time, I didn't realize the necessity of verifying fax transmissions with phone calls, and I didn't discover the error until after the newsletter was published. It wasn't until several weeks later that successful sleuthing by NCFR's Kathy Royce tracked down the missing fax. So, the report that appears here includes brief comments about FFS events at the 1990 annual conference.

The 1990 conference was among the most exciting I've attended in my decade of participation in NCFR. My enthusiasm can be attributed, in large part, to the prominence of the Feminism and Family Studies Section in the program. We sponsored five very well-executed and well-attended paper sessions, eleven posters, and two roundtables. (Session recorders will provide more detail about these sessions in a future Section newsletter.) We also sponsored a Distinguished Lecture by Dr. Pepper Schwartz of the University of WA, and were well represented in a plenary session presented by Dr. Karen Ann Polonko of Old Dominion University. Both of these distinguished lectures were characterized by passion and commitment, intellectual challenge, and well-placed humor. I feel safe in saying that the FFS members who were able to attend these special sessions as well as the paper, poster, and roundtable

sessions, were proud to be represented by scholars of such outstanding achievement. (Incidentally, these presentations are available on audio cassettes. Order forms were included in the last issue of **REPORT**.)

A highlight of the conference as a whole was the Special Fundraiser for the **Jessie Bernard Endowment Fund**. Jessie Bernard, Helena Lopata, and Matilda White Riley participated in a panel on the "History, Struggle, and Development of Women in Academe and Feminist Research." Harriet Presser of the University of MD served as moderator. The event was well-attended and enthusiastically received. (The last unofficial report shows the ticket sales were over \$5,000. The final count, along with an updated report on the contributions to the fund, will be presented in the next Section newsletter.) Please join me in extending sincere thanks to Rosemary Blieszner and her committee, Katherine Allen, Gloria Bid, Beth Emery, and Shelley MacDermid for their tireless efforts in making this event a great success.

While the fundraiser moved us closer to our endowment goal of \$10,000, we are still in need of contributions. If you have not yet contributed, please send your donations to NCFR, with a special notation that your contribution is to be directed to the **Jessie Bernard Endowment Fund**. We encourage you and your colleagues to follow the lead of several family studies programs across the nation (e.g., Purdue, VA Tech, MN, MD, and IL) that have established departmental goals of between \$100 and \$500.

Also, if you have good working relationships with publishers, we ask you to solicit corporate contributions from them. Sharon Panulla of Guilford Publications has already sent a \$500 contribution and Mitch Allen of Sage has pledged a major contribution. Spencer Carr of Westview Press has offered to donate books to the winner of the award for the Outstanding Contribution to Feminist Scholarship. (Rosemary and her committee developed a letter to send to publishers, which we will make available to you.) If you are willing to serve on the Endowment Fund Committee, please contact me as soon as possible.

The Endowment Fund was designed to support an annual award of \$500 to recognize the best research proposal from a feminist perspective submitted by a graduate student and/or new professional. The first award was presented in Seattle to Michelle Clossick.

A second (non-funded) award for the outstanding contribution to feminist scholarship in the form of a published or unpublished paper written by a graduate student and/or new professional was

presented to Nazli Kibria. Pictures of both award winners appear in this issue.

Polly Fassinger, chair of the Awards committee, and Colleen Murray, Marie Osmond, Maureen Perry-Jenkins, and Alexis Walker reviewed the proposals and papers and deserve our thanks for their efforts. Applications for the second annual awards are now open. The deadline for submission is April 30. (The submission form appears on page 16.) If you are willing to serve on the Awards committee, please contact me as soon as possible.

Our efforts to establish a mentoring network are proceeding at full speed. Alexis Walker, past-chair of the Mentoring committee, worked with her committee to develop procedures for implementing this valuable function. She has transferred the materials to Leigh Leslie, who has generously volunteered to serve as the new chair of the committee. If you are in need of mentoring (as most of us are at one time or another), or if you are willing to serve as a mentor, contact Leigh at the University of Maryland (Department of Family and Community Development, College Park, MD 20742). More information about the mentoring process will be presented in future Section newsletters.

Donna Sollie, chair of the Feminist Teaching committee, reported that she and her committee have been working with Carla Howery at ASA headquarters for assistance in compiling the teaching material portfolio. Many members have submitted syllabi and other course material but additional materials are welcome. Karen Polonko encouraged all of us at the Section business meeting to overcome any fears we may have about subjecting our course material to scrutiny and to send it to the committee. Additional information about this will appear in the next Section newsletter. Any ideas you have about integrating feminism into the classroom are needed! Please contact Donna Sollie, Family and Child Development, Auburn University, 203 Spidle Hall, Auburn, AL 36849-5604.

A Section newsletter will be published soon. If you would like to submit any items, contact Kristine Baber, Department of Family Studies, Pettee Hall, University of New Hampshire, Durham, NH 03824.

A review of proposals for the 1991 conference is underway. Volunteer reviewers were solicited at the 1990 business meeting. Presenters/speakers will be notified in late April about their proposals. The new program format looks especially promising.

In closing, I would like to extend a sincere thanks to Karen Polonko, outgoing chair, for her inspired leadership. We will continue to draw on her support to help our Section thrive, just as we

Notice to Canadian Residents From the NCFR Business Office

Effective January 1, 1991, NCFR had to begin collecting GST (Goods and Service Tax) from all Canadian Residents. NCFR was notified in December, 1990, that the GST must be collected on all items purchased by Canadian residents. This includes all fees charged by NCFR for everything from memberships and conference fees to publications. You will notice the following on all of our brochures and flyers for 1991: "Canadian Residents must add 7% GST."

At the time of this writing the GST had not officially been signed into law, but the Revenue Canada Excise Office in Winnipeg assured us that it would be going into effect. The GST will replace the Federal Sales Tax that had been in place in Canada prior to 1991.

NCFR has been unable to determine if there will be any delays in the delivery of our Canadian shipments due to any changes in procedures at the excise office to enforce this new tax. We do know that each state in the U.S. has been assigned to an excise office which is responsible for monitoring all U.S. businesses from that state. We will keep you informed on further information that we receive from Revenue Canada. Thank you for your patience during this time of transition.

Sheila M.J. Riebe
NCFR Business and Personnel Director

continue to call on Alexis Walker for her insight. Thanks also go to the 1990 Executive Committee: Marie Osmond, Vice Chair; Rosemary Blieszner, Secretary-Treasurer; Katherine Allen, Newsletter Editor; and Polly Fassinger and Kay Forest, Student/New Professional Representatives.

I'd like to welcome the members of the 1991 Executive Committee: Katherine Allen, Vice Chair; Polly Fassinger, Secretary-Treasurer; Kristine Baber, Newsletter Editor; and Vicki Loyer-Carlson and Maureen Perry-Jenkins, Student/New Professional Representatives. We look forward to a year of growth and achievements to continue the momentum we've built over the past few years. Constance Shehan, Department of Sociology, University of Florida, Gainesville, FL 32611; 904-392-0261 (W); 904-378-1262 (H).

International

A Global Perspective on Families

The global perspective fostered by the International Section is built through family scholars and practitioners who are aware of family issues in other nations. Some NCFR members are aware of family strengths, family policy, solutions to family problems that are evident in other nations. These stand as innovative models for the U.S.. Other NCFR members are well aware of the painful family reality of abject poverty, mass starvation and war. Also, many committed and concerned family practitioners are taking what is known about improving family life, and helping families in other nations.

Why do we need a global perspective? A lack of global vision would be very costly to families in other nations, and to families in the U.S.. First, our nation affects the family life in other countries. In development projects, in war, in supporting other governments, in having policies that affect immigration, in fostering or slowing the migration of industries in and out of the U.S., etc., we cannot help but profoundly affect the family life of other nations. In our global responsibilities, we would be wrong to ignore the daily lives of these families.

Second, the understanding of family life and experience is distorted if we examine only what is happening in a small portion of the world's population. We do not understand family problems, solutions, and pleasures of family life well if we have a narrow range of vision.

Third, the search for quality of life for U.S. families is clearly enhanced by a global perspective. Let us look to other cultures to learn how to reduce adolescent fertility, infant mortality, and the isolation and impoverishment of a portion of our elders.

Fourth, we also have much research-based knowledge and many innovative solutions to family problems to offer. So, let us welcome international colleagues to NCFR, sharing information with them as well as learning from them.

Those of you who are members of the International Section are aware of the issues we have tried to confront: the nature of marriage and role relations between men and women, the child-raising practices, the policies that sustain and support families, and the poverty and family challenges that limit family quality. We also try to link our members around common research interests, link people to resources for international work and plan an annual program that will help inform the NCFR membership about the global perspective on families. Our sessions were well-attended and thought-provoking. Our next newsletter will contain summaries of each of the International Section sessions. A small fraction of NCFR members are members of the International Section. We invite your membership in the Section and invite you to join with us. Only with more Section members and more

submissions of papers can NCFR's commitment to a global perspective on families be met. Join us if you have something to offer or something to gain.

Internationalizing Events

The American Forum for Global Education is sponsoring a "Retreat for the Future," a conference for global and international education at all levels (K through undergraduate education). The conference is in Hartford, Connecticut, May 31-June 2. Contact the American Forum at 45 John Street, Suite 1200, New York, NY 10038.

Another conference focusing on education is the **International Society for Intercultural Education Training and Research**, May 1-6, in Banff Springs, Alberta, Canada. Contact SIETAR, International Secretariat, 733 15th Street NW, Suite 900, Washington, DC 20005 for further information.

For those of you with interests in comparison of families, the **First International Symposium on Families: East and West** will be held July 25-28 at the University of Indianapolis and co-sponsored by the Yang Ming Medical College. Contact Dr. Phylis Lan Lin, Department of Behavioral Sciences, University of Indianapolis, Indianapolis, IN 46227, for further information.

The International Union of Family Organizations will be sponsoring two meetings in the U.S. May 12-15, the IUFO Commission meeting will focus on "Impasses of Divorce" in Pittsburgh. Information has been requested by Mary Jo Czaplewski. Contact her at the NCFR office or the organizers, IUFO, 28 place Saint-Georges, 75009 Paris, France, for further information.

There will be an **ISA-Committee on Family Research** seminar in Norway, July 29-August 3 that focuses on "What is Family?" Participants will begin in Oslo and travel to other places. Local families will be interviewed. Contact Irene Levin, Tidemandsgata 23, N=0260 Oslo, Norway or Jan Trost, Department of Sociology, Box 513, S-751, 20 Uppsala, Sweden for more information.

The International Institute of Sociology will have its International Congress in Kobe, Japan, August 5-9. The theme is "Ecology, World Resources and the Quality of Social Life." Contact Yoshinori Kamo, Department of Sociology, Louisiana State University, Baton Rouge, LA 70803 for more information, or write to Congress Central Office, Bureau of Sociological Research, Hyogo Kyoiku University, Yashiro-cho, Kato-gun, Hyogo-ken 673-14 Japan.

Refugees: A Particular Concern

As we have watched the war unfold, the untold story of new refugee families has been in the background. Refugees from war, hunger, persecution based on beliefs, and from political regimes are unwilling victims. About half of the world's refugees are children. Since this group is of special concern right now, some NCFR members may want to know about the humanitarian efforts underway to help these families and to aid civilian victims of the Gulf war. The following list of organizations receiving donations was taken from the **Orange County Times**, CA, Friday, January 18:

American Friends Service Committee
1501 Cherry St.
Philadelphia PA 19102

American Jewish World Service
1290 Ave. of the Americans
New York, NY 10104

American Near East Refugee Aid
1522 K St. NW
Suite 202
Washington, DC 20005

American Red Cross
Box 37243
Washington, DC 20013

Catholic Relief Services
Box 1720
Baltimore, MD 21297
ATTN: Persian Gulf Fund

Christian Children's Fund
203 E. Cary St.
Richmond, VA 10115

Direct Relief International
Box 30820
Santa Barbara, CA 93130

Lutheran World Relief
390 Park Ave. South
New York, NY 10016

Presiding Bishops' Fund for World Relief/Episcopal Church
815 2nd Ave.
New York, NY 10017

Save the Children
54 Wilton Rd.
Westport, CT 06880

World Vision Relief and Development
Box O
Pasadena, CA 91103

YMCA of the USA
101 N. Wacker Dr.
Chicago, IL 60606

Publication of this list is intended as a service to those NCFR members who may have a special interest in this issue.

Finally, A Look Ahead

In the short run, we look forward to an excellent meeting in Denver this November! Not only will the International Section be planning a program designed to foster a global perspective on families: other Sections will contain contributions that take an international point of view. It is important to recognize that international work - on religion and the family, on family policy, on health and the family, on women's position in society - is accepted throughout NCFR's Sections and activities!

The International Section is not a place to isolate or segregate international knowledge and practice. Rather, the Section is to promote cross-national research, facilitate communication among international scholars, share information on proposed and completed research projects and sponsor educational program, presentations and seminars at universities in different countries. We are glad to note that many Sections invite international scholarship and support international scholars and practitioners. This will contribute to an exciting annual conference!

Looking farther ahead, **1994 has been declared the Year of the Family** by the UN. Plans for a pre-conference workshop are in the works and suggestions from NCFR members about the nature and content of the workshop are invited. What particular topics would you want covered at such a workshop? How could you contribute? What would benefit you the most? Let me know of your interests.

Remember--Families are a global concern!

Karen Altergott, 525 Russell Street, 1269 Family Research Institute, Purdue University, West Lafayette, IN 47907-1269, USA. (FAX 317-494-0503; IRQ@PURCCVM.

Religion and Family Life National Initiative

Dr. Britton Wood is spearheading a National Initiative to encourage religious bodies to significantly "Strengthen Children and Their Families" by the year 2001. This thrust is being sponsored by the Religion and Family Life Section of NCFR. The initiative will constitute a challenge to major denominations across the U.S. to become part of a national effort.

Many members of the Section are Family Life representatives in many of the major denominations. Most religious bodies have staff members who work with family issues. Wood's and the Section's goal is to provide the horizontal linkage with each of these denominations. These activities can be compared to a neighborhood crime watch. Instead of each family working on its own to care for its own, Wood/R&FL can assist each group, share ideas and approaches, and include families who may not put forth efforts to strengthen their families and children.

Continued funding of this national initiative has been proposed by Wood. Each religious body will be challenged to provide funding for this networking by giving "one cent" per member. If responded to by enough denominations, an adequate budget can be available to: produce quality TV spots that emphasize the annual themes; provide support staff to communities, cities, counties to organize public and private sector family enrichment opportunities; promote the annual themes throughout the nations that underscore "strengthening children and their families," and provide family skill building approaches from a prevention perspective in order to disrupt the trend of dissolution of many families.

A questionnaire is being distributed to all R&FL members in their Winter, 1991, newsletter so that a broad spectrum of expert family representatives can be involved in this important venture. If you would like to be involved in this effort (whether you are R&FL member or not), please contact Dr. Britton Wood, 4055 Glenavon Court, Fort Worth, TX 76109; (817) 924-8509.

Section Activities

The new slate of officers for the 1991 through 1993 Religion and Family Life Section promises opportunities for growth of our Section. As you will find in another section of this March issue, the candidates for each office present us with excellent competence for leadership of our activities:

President:

Bron Ingoldsby and Darwin Thomas

Vice-president:

Roger Ferris and Ben Silliman

Secretary-treasurer:

Don Swenson and John Youngberg

Student/New Professional Representative:

Suzanne Smith

Please forward your votes so that each officer can be aware of our support for the next several years.

As this is being written, the proposals for Symposia and Poster Sessions as well as other presentation ideas have been received. These proposals are being forwarded to R&FL reviewers and will be presented for program approval when the NCFR Board and Program Committee meet in Minneapolis, MN on April 19-21. Topics that have been proposed focus on various aspects of poverty populations, family life satisfaction and marital quality, as well as subjects related to religious and clergy concerns.

Excitement centers around opportunities for several symposia and a proposal for supporting a R&FL National Initiative in a second Pre-Conference Seminar and Training Sessions. One invited symposia promises to direct our thoughts and actions in dealing with poverty across the nation; participants are as follows:

Symposia

"The Morality of Poverty:

Theological, Demographic, and Social Structural Perspectives"

Moderator will be:

Dr. Paula Dail, Iowa State University and Director of the Child Welfare Research and

See Sections on page 20

Sections
from page 19

Training Project; Chair of NCFR Focus Group on Families and Poverty.

Panel members will be:

Dr. Darwin L. Thomas, Brigham Young University; Editor of *Family Perspective*; Editor of *The Religion and Family Connection*, 1988.

Dr. Paul Glick, Arizona State University; Burgess Award for Outstanding Family Research, NCFR; author of "Demographic Pictures of Black Families" in *McAdoo's Black Families*, 1988.

Most Reverend Walter F. Sullivan, D.D., Roman Catholic Bishop of Richmond, VA; Vice-president, International Peace and Social Justice Organization; Past president, American Group of Bishops Concerned with Social Justice.

We are also anticipating that a Distinguished Round Table will be arranged with Bishop Walter Sullivan's comments on the church's role in addressing poverty and social justice issues. This will give many Conference participants the opportunity to initiate

further questions or react to the Symposia's presentation by Bishop Sullivan. We are most pleased to present this opportunity for all NCFR attendees!

Pre-conference and Training
Family Seminar

In continuation of the Religion and Family Life National Initiative begun at the 1990 R&FL Meeting in Seattle, Dr. Britton Wood will present a Pre-Conference and Training Family Seminar. The Seminar will begin on Thursday afternoon, continue all-day Friday, with the possibility of Saturday sessions. Dr. Wood will be joined by Ms. Bea Romer, general chairperson of arrangements. In this attention to the "Strengthening of Children and Families in the 90s," other NCFR members and faculty at Colorado universities are being asked to participate as Trainers and in other roles. Participants in the Seattle conference can complete their certification as a facilitator of Family Strengths by attending this Pre-Conference and Training Family Seminar. Connie Steele, Dept. of Child and Family Studies, College of Human Ecology, University of TN, Knoxville, TN 37996-1900; 615-974-4582.

Research and Theory

As I write this item in early February, I'm waiting to receive copies of the abstracts and proposals submitted for presentation at the 1991 annual conference in Denver. I noted in the December issue of *REPORT* that there are only two types of presentation formats for the conference. The first format is the "Display Presentation." These will be individual presentations that consist of an exhibit of material. Presenters will not read their presentations; rather, each presentation will be exhibited and presenters will be able to discuss their presentations directly with attendees.

Display presentations will be grouped in meeting rooms by topics. For example, all presentations on the topic of child abuse will be in a single room at the same time. These presentations may include presenters whose proposals were accepted by the Research and Theory Section, Family Policy Section, Family Therapy Section, and so on. Each session will have a presider who will coordinate session activities. Since there are no paper presentations, there will be no discussants at the sessions.

The second format will be symposia. They will involve presentations by 3 to 5 individuals and are designed to allow for presentations that might evaluate the state of knowledge in a particular field, new methodological advancements in an area of study, or discussions of a new cutting edge topic in the field of family studies. Tentative plans are for the Research and Theory Section to have approximately 9 display presentations and 3 symposia.

In addition, the Section will sponsor didactic session and two invited symposia. The first invited symposia is titled "Domestic Violence: The Current State of Research, Practice, and Intervention." Patricia Schene, from the American Association for the Protection of Children, Richard Krugman, Director of the Kemp National Center on Child Abuse and Neglect, and Deborah Daro of the National Committee for the Prevention of Child Abuse, have accepted invitations to be panelists. The second invited symposium will focus on poverty and families. Invitations have recently been extended to panelists.

Although we will not need discussants at this year's conference, I'm asking that Section members who would like to serve as presiders write to me in the next few weeks and identify an area or areas in which they feel comfortable participating.

Betty Menaghan, chair of the Reuben Hill Award Committee, will be selecting new members to the committee and beginning the process of selecting the 1991 award winner.

Richard Gelles, Section Chair, Family Violence Res. Prog., Univ. of RI, Kingston, RI 02881; 401-792-2587.

Child care
topic of
symposium

"Child Care in the 1990s: Trends and Consequences" is the theme of a national symposium June 19-20 at Wick Alumni Center at the University of NE-Lincoln.

NCFR is a co-sponsor along with the University of NE-Lincoln Depts. of Sociology and Human Development and Center on Children, Families and the Law and Woods Charitable Fund. Alan Booth, professor of Sociology at the University of NE-Lincoln, is organizing the event.

The symposium is designed for scholars who are teaching and doing research on family issues, graduate students with a major area of interest in the family, child care program administrators and planners, and legislative and policy specialists.

The basic object of the symposium is to present original research and to synthesize the most recent work on child care. Because much of the current work in the area has policy implications, one of the four major presenters will focus on policy issues and one of the discussants for each paper will be a policy specialist.

Graduate students may enroll in a three-week session at the University of NE-Lincoln, with the symposium as an integral part of the course. Scholarships are available for a number of students.

Group rate air fare will be available. Call Linda Dunn at 800-228-4395 outside Nebraska or 800-742-7334 in Nebraska.

The registration deadline is May 1. There is a \$20 fee for materials. Contact the National Symposium on Child Care, Dept. of Sociology, 711 Oldfather Hall, University of NE-Lincoln, Lincoln, NE 68588-0324 for more information.

Mail your
ballot
by May 1

NCFR Membership Application



Name _____ Address _____
City _____ State/Province _____ Zip/Postal Code _____
Home Phone () _____ Business Phone () _____

MEMBERSHIP TYPE:	U.S.	British Columbia Canada...	Foreign & Other Canada**	
Receive both Journals				
Individual	\$ 80	\$ 87	\$ 85	\$ _____
Student	45	52	50	\$ _____
Organization	110	117	115	\$ _____
2nd Family Member*	50	50	50	\$ _____
*2nd Family Members do not receive Journal copies; spouses receive copies.				TOTAL \$ _____

CHOOSE ONE OF THESE MEMBERSHIP TYPES ONLY IF YOU ARE RETIRED OR EMPLOYED PART-TIME:

Receive choice of one Journal: ☐ Journal of Marriage and the Family or ☐ Family Relations

Choose one:	U.S.	British Columbia Canada**	Foreign & Other Canada.**	
Retired	\$ 50	\$ 59	\$ 55	\$ _____
Employed part-time	50	59	55	\$ _____
Second journal at reduced cost of \$30				TOTAL \$ _____

SECTION MEMBERSHIP: (Cost is \$5 per section; \$3 per section for student members.) It is highly recommended that you choose membership in at least one section.

- | | | |
|--|--|--|
| <input type="checkbox"/> Family Therapy | <input type="checkbox"/> International | <input type="checkbox"/> Religion & Family Life |
| <input type="checkbox"/> Education | <input type="checkbox"/> Ethnic Minorities | <input type="checkbox"/> Family Discipline |
| <input type="checkbox"/> Family Policy | <input type="checkbox"/> Family & Health | <input type="checkbox"/> Feminism & Family Studies |
| <input type="checkbox"/> Research & Theory | | |

TOTAL FOR SECTIONS \$ _____

Residents of Virginia, Maryland and DC may choose to have their affiliated council dues go to (check one):

DC ☐ Maryland ☐ Virginia ☐

☐ C.O.F.O. Family Policy Report

\$10.00 Per Year \$ _____

CONTRIBUTION: (All contributions are tax deductible as allowed by law.)

Enclosed is my voluntary gift: \$200 ☐ \$100 ☐ \$50 ☐ Other \$ _____

Apply my gift to _____ general fund _____
special fund name

CONTRIBUTION TOTAL \$ _____

Payment made by: Check ☐ VISA/MasterCard ☐

VISA/MasterCard Number _____

Exp. Date _____

Signature _____ Date _____
(Signature required for credit card orders. I agree to pay a 2.65% service charge.)

**Foreign and Canadian orders: U.S. funds drawn on U.S. banks only • BC has an affiliated Council.

Please return form to: National Council on Family Relations
3989 Central Avenue N.E., Suite 550
Minneapolis, Minnesota 55421

Phone 612-781-9331 FAX 612-781-9348

1991 NL