

MARCH 1997

Report

The family...where the future touches now.

Volume 42, Number 1

Candidates Present Platforms

Here are the biographical sketches for candidates for office in NCFR. In addition to races for national offices and the national Nominating Committee, elections are being held by the following Sections: Family Policy, Family Therapy, Feminism and Family Studies, International, Religion and Family Life, and Research and Theory.

Photos are included where candidates have submitted them.

Biographical data includes:

- 1) Candidate's present professional position.
- 2) Candidate's immediate past professional position.
- 3) Past and present participation in NCFR activities.

- 4) Past and present related activities.
- 5) Platform.

Ballots will be sent by April 1, 1997, to all NCFR members with active membership status at that time. If you are not an ACTIVE member, you are not eligible to vote. If you have any questions about your membership status, please call Kathy toll free at 888-781-9331, ext. 21.

All ballots must be returned to NCFR headquarters with postmarks no later than May 1, 1997.

Members are also reminded that nominations for the 1998 election will be open beginning in June. Information on the positions open for election and a nominations form will be printed in the June issue of REPORT. Nominations will be taken until September, 1997, for the 1998 election.

AFTA Charter Member, Board Secretary; Collaborative Family Healthcare Coalition Co-director; Families, Systems & Health Chair, Editorial Board. 5) Increasing calls for collaboration and integration signal a striking new direction for health care, education, and other family services at the end of the century. NCFR has long provided a collaborative forum where scholars and professionals from many disciplines generate and share knowledge both basic and applied. Our strength is our ability to weave many voices into a sustained dialogue about families, with few constraints from guild or professional turf interests. NCFR can provide leadership to make family well-being more central to policy and practice by nurturing this tradition of collaborative scholarship and application.

Barbara H. Settles, Ph.D.

1) Professor of Individual and Family Studies, Policy Fellow of the Center for Community Development and Family Policy, joint appointment in Women's Studies, University of DE. 2) Associate Professor of Individual and Family Studies, University of DE; Assistant Professor of Home Economics and Sociology, Otterbein College. 3) Life Member; Chair, Theory and Research Methodology Workshop; Public Policy Committee, Vice-president for Public Policy, Public Policy Pre-conference Workshops; AID's Pre-conference Workshops; Annual Meeting Program

National president-elect

**Doherty****Settles**

William J. Doherty, Ph.D.

1) Professor, Department of Family Social Science, University of MN; Director of the Marriage and Family Therapy Program. 2) Associate Professor, Department of Family Medicine, University of OK. 3) Program Vice-president, Family and Health Section Chair, Nominating Committee, Co-founder of Men in Families Focus Group. 4) AAMFT Chair, Professional Practice Committee, Research Committee, Program Committee, clinical member, approved supervisor, fellow;

Inside...

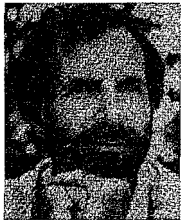
New Program	Page 8
Study Complete	Page 9
Mentoring	Page 10
TCRM	Page 11
Sections.....	Page 12
Awards.....	Page 13
Jobs	Page 25
Affiliate Connection	Page 26

Levine Opens Conference on Fatherhood, Motherhood

"Fatherhood and Motherhood in a Diverse and Changing World," is the theme of the 1997 NCFR annual conference, November 5-10 at the Hyatt Regency Crystal City in Arlington, VA.

Among the plenary speakers will be **James Levine, Ed.D.**, of the Families and Work Institute in New York City. He will speak on "Daddy Strategies for the 21st Century: Involving Men in Children's Lives." Levine is senior consultant and director of The Fatherhood Project at the Institute. Throughout his career, he has created new solutions to meet the needs of children and parents.

He began by teaching preschool for three years, and founded and directed Massachusetts's first comprehensive child care system in that state's second largest public housing project. Over 15 years ago he founded and directed the national School-Age Child Care Project at Wellesley College, which continues as the country's leading source of technical assistance on after school care.

**Levine**

Most recently Levine spent nine years as vice-president of Bank Street College of Education where he originally founded The Fatherhood Project. The Project is a national research and

education program that examines the future of fatherhood and develops ways to support men's involvement in child rearing. Three components are maintained: The Male Involvement Project, National Practitioners Network, and The Father-Friendly Business.

Project publications include **Getting Men Involved: Strategies for Early Childhood Programs and New Expectations: Community Strategies for Responsible Fatherhood.**

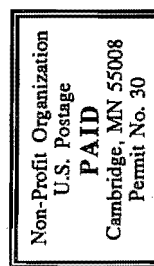
Levine has written seven books, contributed regularly to national magazines, and authors a monthly column on fatherhood for *Child* magazine.

His most recent book, written with Ed Pitt, is **New Expectations: Community Strategies for Responsible Fatherhood** (available through NCFR's catalog--page 14). His upcoming book, with Todd L. Pittinsky of Harvard Business School, is **Working Fathers: Strategies for Balancing Work and Family**. He recently co-produced a two-hour special for PBS entitled, "Family Man."

Levine has received several honors. He graduated Phi Beta Kappa, magna cum laude, from Amherst College, winning both Fulbright and Woodrow

See Levine on Page 2

See Elections on Page 16



NCFR
3989 Central Ave. N.E.
Suite #550
Minneapolis, MN 55421



TIME DATED MATERIAL
Please Deliver by March 20, 1997



President's Report



NCFR at a Crossroads

Greetings to all of the NCFR family and may your Spring be near. The winter of '97 will indeed be remembered. What such a deep winter allows is introspection, and I have, among other things, been thinking about NCFR, and where it is going at this time in history when "family" is at the center of academic and political debate. We are at a crossroads in NCFR; decisions made this year will set our future direction.

One of my goals as your President was to make sure that NCFR remains the central hub for family research and dissemination. To do this, however, we first have to know who we are, and where we are going. The "old saw" about research versus practice which many organizations struggle with is a dilemma for us, too. Is NCFR an organization for researchers or practitioners? The answer is "both."

Regardless of emphasis, the goal is rigor. Whether research or practice (or a combination thereof), the work presented by NCFR members should be based on sound inquiry or evaluation of practice. Members of NCFR should know the criteria. Worldwide, the *Journal of Marriage and the Family* is viewed as the premier source of research about families. Other NCFR endeavors are less positivist, but everything we do, from publications to conferences to training educators to increasing awareness about diversity in families should reflect the highest standards.

Currently, there are many from new quarters who want to join our ranks; that is good because NCFR wants new members. Our quandary is to decide where to direct our affiliations. The dilemma of research versus practice is raised again.

I would like to suggest this general principle for guiding who we are as an organization and where we are going: Those who join NCFR should demonstrate that they value both research and practice, even if they don't actually do both. They should be known for maintaining high standards so that their work can serve to inform others about families and their diversity, worldwide.

We have already set some standards in NCFR, for example for educators; let's maintain them. Gaining numbers in membership without maintaining scholarly integrity will drastically alter the mission of NCFR.

As a member of NCFR, you will receive a letter from me about an upcoming "each one reach one" campaign to recruit new members. With the above in mind, we hope you will reach at least one new researcher or practicing professional and ask them to join our ranks. As we launch this membership campaign, the following information may be useful to you.

♦**Why should every family researcher or family professional join NCFR?** NCFR provides a forum for every scholar or professional, regardless of discipline, to come together to share information about families and thus enrich their own work. NCFR is not the only national organization that is interdisciplinary, but it is the only one that focuses on the topic of families--and on research and application. Given the current trend toward interdisciplinary collaboration to solve particular societal problems--for example, problems concerning families, NCFR is the perfect place for scientists and professionals to come together to find the information and networking they need. While most will have other affiliations within their own discipline, NCFR provides a smaller, more sociable conference where cross-disciplinary discussions happen. It also provides a format where cross-generational mentoring happens. In no

other organization do I see so much going on between folks who represent differing experience and training. This is what is unique about NCFR.

♦**How can you be an NCFR ambassador?** Reach out to researchers and professionals who work with families even if they are from disciplines other than your own. Invite them to attend the annual conference this fall in Washington DC. Hand them our journals, our newsletter. Connect them to another NCFR member by electronic mail to get more information about their particular interest. Tell them about the different Sections, focus groups, and affiliated councils. If they are recently graduated, tell them about our mentoring programs and other student and new professional activities. Tell them we welcome a

multiplicity of viewpoints about families and the people in them.

We need your help if we are to reach our goal of a 10 percent increase in membership. Your help is critical because you know our standards. You are the best ambassador for bringing in new members that will keep NCFR the central hub for research and dissemination of information about families in the U.S., Canada and around the world.

I wish you well as you set out to find new members for NCFR. I look forward to meeting them--and you--in Washington DC.

Pauline Boss Ph.D.
1996-1997 NCFR President

Meetings

June 5-7: **National Health Care for the Homeless Conference**, Washington, DC. "A Decade of Caring" is the theme. The annual Health Care for the Homeless Policy Symposium will be held June 5 in conjunction with the conference. For conference information contact Maggie Castoires, 617-482-9485 or mcastoir@jsi.com. For policy symposium contact Polly Bullock at 615-226-2292.

June 9-18, 1997: **19th Annual Guelph Conference and Training Institute on Sexuality, "STDs and Sexuality," "Men and Sexuality."** Contact: Office of Open Learning, University of Guelph, Guelph, Ontario N1G 2W1; phone: (519) 767-5000; fax: (519) 767-1114; e-mail: info@openlrng.uoguelph.ca.

Levine from Page 1

Wilson Fellowships, and earned his doctorate at Harvard Graduate School of Education. He was just named by *Working Mother* magazine as one of the 25 men in America who have made the most difference in the lives of working mothers. He will be featured in the June issue of the publication.

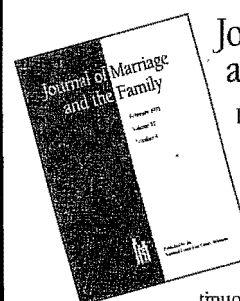
His first book, *Who Will Raise the Children? New Options for Fathers (and Mothers)*, won the 1976 Family Life Book Award of the Child Study Association of America. In 1984, *Esquire Magazine's* first "Register Edition" selected him as one of the "men and women under 40 who are changing the world." In 1990, *The New York Times* profiled his life.

Levine conducts seminars on DaddyStress/DaddySuccess for Fortune 500 companies and appears frequently on television, radio, and in the press as an expert on families and children. He has been a consultant for many organizations, including Apple Computer, Children's Television Workshop, the Ford Foundation, and IBM.

As a consultant to Vice-president Gore, Levine helped prepare President Clinton's 1995 Executive Order launching a new federal fatherhood initiative.

Students,
professionals,
&
professors
rely on
these
research
tools!

National Council on Family Relations
3989 Central Ave. N.E., Suite 550
Minneapolis, Minnesota 55421
(Toll free) 888-781-9331
(612) 781-9331 • FAX (612) 781-9348
Email: ncfr3989@ncfr.com
Web: www.ncfr.com



Journal of Marriage and the Family

Prestigious quarterly journal features original theory, research interpretation, and critical discussion of topics related to marriage and the family. During more than a half century of continuous publication, *Journal of*

Marriage and the Family has earned an international reputation as the premier research journal in the family field. Contributors include a wide range of family specialists.

Journal of Marriage and the Family articles are cited extensively in books, classroom texts, and in the media.

ISSN: 0022-2445 284 pages of original family and marriage research four times per year

Institution: U.S. \$95.00 Non-U.S. \$110.00
Individual: U.S. \$50.00 Non-U.S. \$65.00
Student: U.S. \$25.00 Non-U.S. \$40.00

Prices include shipping and handling. Canadian orders must add 7% GST tax 123-830-465.

Family Relations: Interdisciplinary Journal of Applied Family Studies

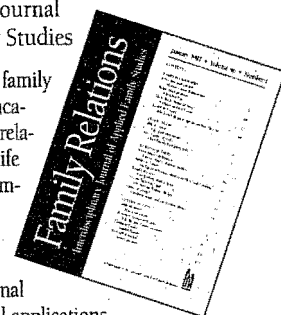
Scholarly journal for family practitioners and educators. Emphasis is on relationships across the life cycle. Relevant for family therapists, educators, and public policy makers. Articles include original research and practical applications. Published quarterly.

Family Relations articles are referenced in numerous articles, books, and research documents.

ISSN: 0197-6664 120 pages of research with practical applications four times a year.

Institution: U.S. \$85.00 Non-U.S. \$97.00
Individual: U.S. \$45.00 Non-U.S. \$57.00
Student: U.S. \$20.00 Non-U.S. \$32.00

Prices include shipping and handling. Canadian orders must add 7% GST tax 123-830-465.



REP397

REPORT

of The National Council on Family Relations

Executive Director: Mary Jo Czaplewski
Printing: Cambridge, MN

NCFR Report is published quarterly by the National Council on Family Relations, 3989 Central Ave. N.E., Suite 550, Minneapolis, MN 55421. Third class postage permit.

Subscription rate is \$5.00, included in annual membership dues. \$15.00 U.S. postage per year postpaid individual rate.

NEWS DEADLINES: February 1 for March issue; May 1 for June issue; August 1 for September issue; November 1 for December issue.



CFLE Directions



CFLEs Urged to Get Designation Recognized

The Certified Family Life Educator (CFLE) program has been in existence now for over ten years. Progress has been steady, but slow. The program has followed the evolution of the field of family life education. As awareness and understanding of unique family life education issues and perspectives have grown, so has interest in the CFLE program. We currently have over 650 active CFLEs. While this is a strong number, it is a small portion of the number of family life education professionals practicing today.

As Director of this program since 1989, I have given much thought to what needs to be done to increase the recognition of the CFLE designation and bring it to a point where it is widely recognized and valued. I have studied other certifying organizations to see what methods they have employed.

It has become clear that we have a lot of educating to do. Not only is the general public largely unaware of what family life education is, but professionals are unaware and confused as well!

A recent article in *USA Today* addressed the need for social workers to return to the "front lines" in light of the welfare reform law. In this February 14, 1997 article, John Ritter describes social workers: "they are employment specialists, education specialists, and family support specialists. They have to know a lot about a lot of things: substance abuse, day care, illiteracy, domestic violence, mental health providers, public transportation, and more."

Sounds like family life education to me! Yet, rarely do you read about or hear of discussions on filling positions such as these with family life educators.

Howard Barnes Ph.D. CFLE, East Carolina University, contacted me last summer about this issue. He is concerned that until we get the profession of family life education recognized nationally, we will have difficulty increasing the number of Certified Family Life Educators.

Barnes submitted the following article for the Winter issue of the CFLE newsletter, *Network*. I am reprinting it here because it raises excellent points about the family life education profession, and the need for all of us to take action toward increasing the visibility and value of certification.

Dawn Cassidy
Director of Certification

Getting Family Life Education Recognized at the State Level

*by Howard Barnes, Ph.D., CFLE
Department of Child Development and Family Relations
East Carolina University*

We have the interested students, we train them to work with families, and we send them out into the world. But where are the jobs or careers for them? What

will they do? Is the value of their professional training recognized?

I don't think our efforts receive the recognition they deserve, and that's why I challenged the folks attending the Education and Enrichment Section meeting and the CFLE reception at the NCFR annual conference in Kansas City to get involved at their state levels to gain greater recognition for our field.

If family life education is to be recognized as a profession, we will have to insist on being recognized. We can't stand around waiting and hoping that others will surely and eventually recognize the goodness of our efforts, and promote our profession for us.

Our field is mature enough, our numbers large enough, and what we offer society is important enough: It is time to insist on professional recognition.

The bottom line is that most of us are proud of our work and our profession, but I fear those of us who are educators or trainers may still be somewhat apologetic with our students regarding their future employment potential. I have been.

Many years ago when I committed to a career in serving families, professors told students we would have to "sell" ourselves and our skills to potential employers. We would have to educate employers as to what a family life educator or family service professional could provide, how such a professional would not only "fit" in their organization, but enhance its services.

Now, each semester as undergraduate students consider changing their major to family studies and they ask about job potential, I still talk about the need to educate other people about who we are and what we do. It's time we matured beyond that. We need to step forward and insist on the recognition we and our students deserve. How do we do that?

One way is to organize at the state level. Launch a coordinated effort within each state to develop one or more job definitions within the state employment act, the human resources commission code, state personnel act or whatever governmental body has the responsibility to officially define professional positions and state personnel policies and procedures.

Organizing is mysterious and foreign territory to many of us, and it is potentially controversial, but I think it is critical to our professional future. Why is this controversial? Some professional groups have developed large and powerful organizations including lobbying efforts. In some cases they have successfully narrowed position descriptions to assure that only students with their particular educational background can hold certain positions. Historically our students have managed to talk themselves into some of those

positions, but increasingly the positions are being limited to persons with specific forms of training, such as a degree in social work or education.

These organized groups have a stake in "protecting" their positions and may view our attempts to establish job classifications for our students as competition for limited state positions.

This type of territoriality is common-- expect it. Here's the bottom line: Our students do possess unique professional abilities, and they can contribute to state efforts to improve family life. States should be allowed to utilize their expertise to address the needs of residents.

We need to remember that changes in attitudes and problem foci in many fields, plus ongoing changes due to welfare and educational reform and growing emphasis on serving families, mean that our students are better equipped to address the responsibilities of many positions than those with other types of education and training. Again, the problem rests with state personnel procedures typically defining jobs and responsibilities from traditional or historical perspectives based on a time when family studies-trained professionals were not available: We need to continue to work for official recognition.

Why this focus at this time? Times are changing rapidly, and we need to change our approach. Several streams are converging. Some create opportunities, and others create greater urgency. The advent of welfare reform and new programs such as family preservation, offer new professional opportunities to our students. Momentum seems to be swinging toward a call for innovative ways to deliver services to whole families to replace the traditional "piece meal" approach.

On the other hand, there are new challenges. For example, in my state of North Carolina, our graduates have been able to accept a variety of positions defined in the state personnel act. However, the social work lobbyists recently convinced the legislature to pass a requirement that any persons hired into many of these positions must hold social work degrees from accredited programs. This effectively shuts the door to professional opportunities previously available to our students.

Here's what you can do:

❖ Find out if there are others in your state who are interested in working with you on this effort. Start by educating yourselves.

❖ Explore how state personnel procedures work in your state. While there may be similarities, each state will be different. What positions currently exist that our graduates might fill? Who has the authority to define positions? Who initiates new positions? Are they defined separately within each state agency or through a central personnel process?

❖ Start making as many contacts as you can with local legislators and career and appointed officials in state offices. Educate them. Talk about what we and our students can do, and how we will benefit the families in your state.

❖ You may need to educate elected officials about state personnel procedures. You will need to educate them about the need to define one or more positions related to the family professions. Social services may need family intervention specialists, and family development specialists, the department of education may need to define a family life educator position (some already have parent or family educators) or a family liaison position to help schools and school systems effectively collaborate with parents to improve education. The department of corrections may need several types of family intervention and liaison type positions. There are many possibilities.

❖ Prepare yourself--this is liable to be a very political process and may take a multi-year effort. Just asking questions may raise others' suspicions and anxieties and stir their territorial protectiveness.

❖ Finally, you can make sure that someone from your state group shares your experiences with others from other states. Report back to Dawn or me about your experiences. We can share them in the *Network* and at the NCFR conference in Washington, DC in November. We can compare notes and success stories and learn strategies from each other.

Please resist the temptation to say "Sounds like a good idea--I wish them luck." We need YOUR input. Each CFLE and family life education professional needs to participate in this effort to increase the awareness of the CFLE program.

We know our students leave school equipped to address the family context of many of the challenges manifest in our society. We know the citizens in our states could benefit from family-oriented service and education providers. We have some work to do to assure these needs come together in professional opportunities for our students.

Please contact me with your suggestions: Howard L. Barnes, Associate Professor, Department of Child Development and Family Relations, Human Environmental Sciences, East Carolina University, Greenville, NC 27858-4353 (919) 328-1349; Bitnet: HEBARNES@ECUVM1 Internet: HEBARNES@ECUVM.CIS.ECU.EDU

**NEXT CFLE REVIEW
DEADLINE:**

SEPTEMBER 3RD



Executive Review



Does NCFR's Future Include Parenting Educators?

When NCFR's board of directors met last April, 1996 for the purpose of setting out a vision and future direction for NCFR's entry into the 21st Century but three years hence, several goals articulated a desire that NCFR expand its reach to more potential members and to concentrate on inclusiveness in welcoming all family professionals, especially those practicing in diverse family fields. President, Pauline Boss buttressed these goals in her December presidential column with her vision to have "NCFR become the central hub for family knowledge and information [synthesis], dissemination, and assimilation."

The burgeoning national movement to professionalize parenting education presents such an appropriate opportunity to further that vision. NCFR has historically had various structures in place that include parenting educators. For example, the section structure includes the Research and Theory and Education and Enrichment sections. The Focus Group on Parenting Education has been active for several years. The Certified Family Life Education program also includes the core concept of parenting education for its professional designation. In addition both of NCFR's research journals have covered parenting education issues, and the annual conference has provided ample space for continuing education and cutting edge research on parenting education. (The 1996 conference had over 110 presentations that were focused on parenting education topics.)

According to the PEN coordinator, the proliferation of as many as 50,000 parenting education programs in the United States involving nearly 250,000 professionals, para professionals, and volunteers in providing classes, materials, and support services to millions of parents raised concern among leaders of the movement, that if parenting education is to achieve professional status and recognition as a legitimate discipline and field of study, some form of organization was immanent.

This was to enable networking, standard setting for professional practice, and professional growth for those engaged in "doing" parenting education.

To that end, an impressive and diverse group of parenting scholars and educators and organizations have been meeting since 1995 to consider the "future of parenting education". They recently have identified themselves as the PARENTING EDUCATION NETWORK (PEN). Many individuals involved in these discussions are already NCFR members. NCFR's own concern for helping to prepare parents for their awesome tasks of child rearing dates back to its very beginnings in 1938. For example, Ruth S. Cavan wrote about "Knowledge About Parent-Child Relationships in Vol. 3:4, 1941 of Marriage and Family Living (now the Journal of Marriage and the Family). In June 1996, NCFR was approached by representatives of this group to consider

its role as a possible source of organizational support for the network. Several meetings and communications were exchanged.

On December 20, 1996, I was invited by PEN to represent NCFR at a special meeting held at Wheelock College, Boston MA - the site of The Graduate Center for Parenting Studies - to describe NCFR's strengths to support this growing field and to suggest alternatives for maintaining their autonomy and recognition while advancing Parenting Education as a profession.

The meeting consisted of two phases. The first was an informational exchange in which NCFR and the Family Resource Coalition were asked to present their associations' strengths and alternatives for enhancing parenting education as a profession. Phase two consisted of a brainstorming session to build a realistic plan to best meet joint goals of PEN, NCFR and FRC as well as reflecting the current realities of the emerging field.

Just as NCFR is an association representing a very diverse group of family scholars and practitioners, so is the parenting education group. These educators come from over 40 different primary professions and organizations. This characteristic has been both an asset and a liability for NCFR. Would it be the same for PEN?

The outcome of the discussion was the conceptualization of PEN as a CONSORTIUM of many organizations already involved in furthering parenting education in some form. PEN leaders were charged with working out a unique relationship with each participating organization, respecting the wisdom and experience that has produced the organization's particular approach to meeting the needs of its own members. Through these relationships and through projects supplementing the work of NCFR, PEN would play a catalytic role in supporting parenting education practitioners, fostering a sense of identity and connection, and in affirming and advancing the field of parenting education.

PEN identified the following steps for achieving this consortium.

1. It is seeking approximately \$60,000.00 from private foundations for a pilot project to develop relationships with NCFR and other organizations, create a minimum organizational structure, a database, a newsletter and an internet link. The addition of other organizations would be based on the success of the pilot project.

2. Meetings with NCFR and FRC would continue including a presence of PEN at the NCFR board of director's meeting in November and on the conference program.

3. Continued investigation of the creation of a membership base for PEN including organizational as opposed to

individual membership; Creating a subscriber/member base for the Parenting Education Network News - edited by Elizabeth Crary, now available for circulation; Exploring possible joint membership of PEN with collaborating organizations such as NCFR; and exploring the roles of service providing organizations and other groups that are not professional associations.

The underlying principle of the above steps is to be inclusive. That is to embrace racial, ethnic, philosophical, structural, disciplinary and geographical diversity within the consortium. PEN organizers recognize that given the emergent nature of the field, it would be inefficient and premature to create an elaborate infra-structure of its own or to duplicate existing efforts of organizations such as NCFR.

NCFR's board of directors and a special committee will be working in the next few months to develop ways to maintain and strengthen its own parenting education networks already in existence, while examining the development of this new field and its relationship to NCFR. Thus far, NCFR has submitted a supporting letter to the PEN funding proposal; the board is organizing a task force to work with PEN leaders in developing a PEN/NCFR structure; the

PEN coordinator, Rae Simpson has been invited to discuss the issues with the board at its November meeting. PEN members have arranged to discuss the issues in a special forum at the annual conference, and several PEN proposals were submitted for the program.

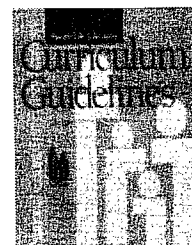
The key question with which NCFR must concern itself is, **how to contribute collaboratively to the consortium concept while continuing to maintain and expand NCFR's current core of parent education members?** In order to survive as a viable family professional organization beyond this 20th century, NCFR **MUST** reach out to other groups, work in collaborative relationships, and in coalitions around the core concepts of the family field. PARENTING is one of these concepts. How we respond to this opportunity could make a difference in NCFR's very nature and strengths in the next century.

NCFR is at a crossroad. That means there are several paths available. But at the end of each path there are different outcomes. Which road to the future will NCFR take? What will be the outcomes? Many people are involved in the discussion of what should be done. Let us hear from you with your suggestions, comments and needs. We welcome further discussion on this matter. Mary Jo Czaplewski Ph.D. CFLE Executive Director

FAMILY LIFE EDUCATION CURRICULUM GUIDELINES

REVISED AND EXPANDED!

Offers guidelines for developing or assessing family life education programs over the life span. A must-have for anyone involved in family life education program development or assessment.



Editor David J. Bredehoft, Ph.D., has revised and expanded the contents of the NCFR Family Life Education Curriculum Guidelines to include a number of excellent resources for anyone working in family life education. Contents include: *University and College Curriculum Guidelines, A Framework for Life-Span Family Life Education*, a K-12 sexuality curriculum guide, an evaluation guide, a parent education program guide, and family life education references and resources.

\$14.95 CFLE/NCFR member • \$17.95 Non-member

Contact the NCFR office for ordering information.



National Council on Family Relations

3989 Central Ave. N.E., #550 • Minneapolis, MN 55421
Toll Free: (888) 781-9331 • (612) 781-9331 • FAX (612) 781-9348
E-mail: ncfr3989@ncfr.com • Web: www.ncfr.com

REP397

Membership Memo



Recruitment Begins With YOU!

This edition of Membership Memo focuses on recruiting new members to NCFR. The viability of any professional society depends on sustained membership, and NCFR is no exception. If you value the contributions of resources and networking opportunities the NCFR makes to your professional life, now is the time to join the "Each One Reach One" campaign. Make it your goal to sign up at least one new or lapsed member.

Personal contacts are most effective for recruiting new members. A good method of selling NCFR to potential members is to make a telephone call or chat during a coffee break. Explain the membership benefits and how they help you in your work. Be sure to mention the journals and other publications, quarterly newsletter, Sections geared to special interests, state and regional affiliate councils, opportunity to become a CFLE, affiliate and national conferences with discounted registration fees for members, the home page on the Internet, networking and leadership opportunities—all found in a warm, friendly, approachable organization.

Here are some specific ideas for recruiting members in different settings:

Community Agency

Many organizations have annual recognition ceremonies to highlight special contributions and accomplishments of staff members. Instead of rewarding colleagues with plaques or paper weights, why not show appreciation for outstanding efforts by enrolling them as a member of NCFR? The Colleague member category costs about the same as a corporate gift, and certainly contributes far more to someone's professional development than an engraved letter opener!

Undergraduate Program

One way of introducing undergraduate students to the premier professional society in their field is to have them complete the provisional CFLE application as part of the requirements for a course on family life education or principles of human services. This exercise gives students the chance to check themselves on progress toward their professional goals and enables them to better understand the purpose of their major requirements. In addition, it provides instructors with opportunities to explain the value of belonging to NCFR and the specific benefit of a member discount on the CFLE application.

Graduate Program

Most departments recognize that by the second year of study, graduate students have made good progress toward degree completion and are highly committed to finishing their studies and assuming a professional career. That year, then, is the appropriate time to acknowledge students' accomplishments by sponsoring their membership in NCFR. Either the one journal or two journal student membership type is an affordable option. At your next department meeting, propose that the department enroll all second year graduate students in NCFR.

Retiring in 1997?

Often academic departments and other organizations honor their retirees with farewell parties and gifts. Let one of those gifts be recruitment of a new member of NCFR (which includes paying for the membership). If the retiree

accomplishes gaining a new member as one of the final items on the last "to do" list, and the retiree's colleagues recruit a new member to show support for the retiree's favorite organization, then NCFR will benefit from two new members as a result of one transition.

For more information...

Send me other ideas for recruiting new members to NCFR (and your success stories!) so that I can share them in future Membership Memos (rmb@vt.edu). See the NCFR home page or organizational news and membership information: <http://www.ncfr.com>.

Contact Kathy Collins Royce, membership manager at NCFR headquarters, for membership recruitment materials: kcroyce@ncfr.com or toll free at 888-781-9331 ext. 21 or FAX at 612-781-9348.
Rosemary Blieszner Ph.D.
NCFR Membership Vice-president

Contributors

Public Policy

Catherine S. Chilman,
Washington, DC.

For more information on contributing to NCFR, contact Mary Jo Czapski, NCFR, 3989 Central Ave. NE, Suite 550, Minneapolis, MN 55421; toll free 888-781-9331 ext. 17.

Family Relations Has New Name

Beginning in January, one of NCFR's journals has a new name: **Family Relations: Interdisciplinary Journal of Applied Family Studies**.

According to an editorial in the January issue written by Jeffrey Dwyer, current editor, the new name "...is intended to formally reflect the interdisciplinary content that has historically been present in the journal and the broad life-span perspective of family-related fields represented by FR's audience. The inclusion of the word 'interdisciplinary' and the deletion of 'and child,' are intended to aid in communicating to a wider audience, thus increasing the breadth of submissions in family-related areas and increasing the potential readership base."

This is the third name change for the journal. Initially it was called **Family Coordinator**.

May 15 is International Family Day.

Plan special activities honoring families in your communities and workplaces.

We've Expanded Our Product Line!

Midlife, Aging, & Families

Relationships, Marriage, Families, & Divorce

Midlife, Aging, & Families

Current Widowhood: Myths & Realities (B)
Helen Zuckerman
Provides an overview of the major themes that have characterized the study of widowhood in recent decades. Ann Martin Matthews, University of Guelph, Ontario states, "There is a richness and depth to the discussion which draws on a large body of research not only on widowhood but also on such related topics as late-life marriage, caregiving roles, friendship ties, employment patterns, and the changing roles of wife and mother." ISBN: 0-8039-7396-9. 251 pages. Paper.
XX0043 NCFR Member \$23.95 Non-member \$39.95

Families & Aging (B)

Family 2010 Series, Volume 4
Timothy H. Brubaker, CFLE, Issue Editor, Sharon J. Price, Series Editor
Addresses the impact of divorce, health, housing, ethnic/racial diversity, disabilities, economics, and caretaking on the elderly and their families. The 26 contributors stimulate interest in family policy, family-based problems, and offer suggestions for strengthening later life families' coping skills. Each two-page brief highlights trends, policy, programming, and assessment issues. Ideal for educators, students, policymakers, and grant writers. ISBN: 0-8161-176-5/0. 44 pages. Paper.
OP9607 NCFR Member \$15.95 Non-member \$20.95

Families in Later Life: Dilemmas and the Decisions (V)

Walter Schulz
Examines societal trends impacting families in later life, the complexities of family decision-making, and the dilemmas faced in making eldercare decisions. Approx. 20 min.
\$5V4 NCFR Member \$39.95 Non-member \$49.95

The Healthy Woman: Menopause and Other Things We Don't Talk About (B)

Susan Davis, M.D.
Finally a book that tells a woman everything she needs to know as she grows older! Dr. Davis emphasizes that by working with midlife and later life changes, women can ensure a good quality of life for themselves. Deeply rooted in clear, scientific fact, this important book gives information and guidance in a conversational format. Her flashes to osteoporosis, the material is up-to-date, frank, and Dr. Davis, an endocrinologist, blends the professional and the personal to provide a fundamental understanding of... ISBN: 0-87630-506-X. 160 pages. Paper.
XX0038 NCFR Member \$15.95

MIDLIFE: Why Do I Feel Like This? (A)

Janine Winickstein-Audoux, with music by Ken Medema
The special blend of music and dialogue creates a unique environment for those in the midlife journey. The 4 1/2 hours of information and guidance include topics such as men's issues, resistance to midlife change, self-knowledge, career changes, loss, menopause, and male and female sexual changes. ISBN: 0-8453-4002-4. 4 tapes.
XX0040 NCFR Member \$31.95/1st Non-member \$36.95/1st

Older Women: Surviving and Thriving (B/E/P)

Ruth H. Jewson
Older women often face feelings of powerlessness and loss of self-worth. This 12-session workshop teaches participants how to rebuild their self-esteem and value their experiences and identity. Includes discussions, exercises, and practical advice on loss of identity, sexuality, health, financial management, and community involvement.
ISBN: 0-87364-231-2. 130 pages. Paper.
XX0034 NCFR Member \$20.95 Non-member \$25.95

Psychotherapy With Older Adults, Second Edition (B)

Sal G. Knight
This best-selling book offers professionals and students a thorough account of therapy with older adults. Sensitively linking both research and experience, it provides a practical account of the "know" technique necessary to work with older adults in a therapeutic relationship. Includes a discussion of assessment... ISBN: 0-87630-506-X. 160 pages. Paper.
XX0033 NCFR Member \$15.95

NCFR Proudly Announces Its Latest Collection of Family Resources.

Over 150 products—43 NEW items—arranged by topic:

- Children, Adolescents, & Families • Diversity & Families •
- Family Life Education • Family Policy • Family Therapy •
- Grief, Death, & Loss • Health & Families •
- Midlife, Aging, & Families • Violence & Families •
- Work & Families • Relationships, Marriage, Families, & Divorce •

Obtain your **free** copy of our 35-page Catalog.
Special discount prices for NCFR members.



National Council on Family Relations
3989 Central Ave. NE, Suite 550
Minneapolis, MN 55421
Toll Free: 888-781-9331 • Phone: 612-781-9331
FAX: 612-781-9348 • E-mail: ncfr3989@ncfr.com
Visit our Website at www.ncfr.com

REP397



Family Policy Monitor



Budgets, Fathers, Spousing Important Topics

A new year, a new Congress, and a new Presidential term are all bringing excitement to the Washington scene. What will be the issues? As I write this, just before inauguration, we cannot know what legislation and policies will be enacted or fought over, and how the deficit will be affected, but the balanced budget amendment seems to be an issue for sure.

I am reporting on meetings I have attended in January, with Internet addresses for your follow up.

Balanced Budget Amendment

The first meeting was the coalition to oppose the Balanced Budget Constitutional Amendment, which is slated for early action in the 105th Congress. Supported by a set of well-reasoned papers produced by the reputable Center on Budget and Policy Priorities, the coalition is working to inform legislators and the public about the negative effect of an amendment to the Constitution.

A major objection is that a requirement for a balanced budget every year would be pro-cyclical in its effect during a time of downturn in the economy. When there is a downturn, revenues become less at the same time that need becomes greater. Analyses show that actions to cut spending and raise taxes from 1930 to 1933, similar to what would be required under a balanced budget amendment, just deepened the depression following the crash of 1929.

The proposed amendment also has requirements for super majority votes in Congress to raise taxes, but not for cutting programs as ways of bringing the budget into balance. A super majority means that a minority can stop prudent as well as imprudent action.

A major flaw in the arguments for the amendment is the assumption that families and states already have to live within their means, and therefore, the federal government should do likewise. This does not take into account that both families and states separate their operating budgets from their capital investments, which the federal government does not do.

The enforcement of the balanced budget provision is not specified in the amendment as written. This leaves open such questions as: Does the President gain more power? Do the courts intervene? Who can entirely anticipate the amount of revenue which will be collected in any one year, or the emergencies which occur, or the demands for entitlements? At what point is the budget out of balance? These and many questions remain to be answered.

What is needed is a balanced, principled approach to reducing the deficit, and ultimately the debt. If you want to know more so that you can talk intelligently with your congressperson, you may get information from the Center on Budget and Policy Priorities through Internet: center@center.cbpp.org

<http://www.cbpp.org> HN0026.

Girl Power!

Already by the middle of January, there have been three interesting meetings which exemplify the new TARGETED APPROACH to programs by HHS. The first was sponsored by Girls, Inc., a national youth organization devoted to helping each girl in America become strong, smart, and bold. The meeting featured a movie prepared by USA/Network, "The Member of the Wedding," to be shown later this year. The story is about the struggle of a teenage girl looking toward her future. Donna Shalala, secretary of HHS, told us this movie is part of Girl Power!, a national public education campaign sponsored by HHS to encourage and empower nine- to fourteen-year-old girls to make the most of their lives. Many organizations are involved in Girl Power! As part of the public/private partnership initiative. Get information by phoning the National Clearinghouse for Alcohol and Drug Information at 1-800-729-6686 or on the Web: <http://www.health.org>.

Early Childhood Public Engagement Campaign

The same concept of private/public partnership is being followed for the Early Childhood Public Engagement Campaign. Led by the Work and Families Institute of New York City, and Zero to Three: National Center for Infants, Toddlers, and Families, a large group of funders, advisors, and supporting organizations. NCFR is one of the main co-sponsors, are working together in an unprecedented public awareness and engagement campaign to focus on new and compelling evidence about the importance of the first three years of life for the brain development of the child. The four public policy goals of the campaign are:

- ❖informed parenthood
- ❖comprehensive preventive health care for mothers and young children
- ❖wider availability of high quality child care and early education
- ❖expansion of efforts to reverse current patterns of neglect.

Francisco Villarruel, Ph.D., MI State University, and director of NCFR's Media Awards Competition, and I attended the kickoff meeting here in Washington. Family life educators and developmental specialists will want to take advantage of materials prepared for the campaign, and we encourage all NCFR members to do their part in publicizing this effort. The first large media event will be an hour-long ABC Prime Time TV Special scheduled to air on April 28.

To get more information, contact the Work and Family Institute Web site: <http://www.iamyourchild.org> or electronically at emgalinsky@aol.com.

Fatherhood Initiative

The third meeting, held at HHS, featured NCFR members William Doherty and Martha Farrell Erickson presenting their report on "Responsible Fathering: An Overview and Conceptual Framework." Their goal was a synthesis of the current research and understanding of the social role of fathering. Their conceptual framework, based on a systemic ecological orientation, focuses on contextual factors in home and community and in employment which they find influence fathers more than mothers. Important among these is the relationship of the father to the mother, with the mother in many cases serving as the gatekeeper in allowing or encouraging access to the children. They are interested in factors that "help create and maintain a father-child bond." They explored resident and non-resident father behavior and identified four "domains" of responsible fathering: paternity, presence, economic support, and involvement.

Doherty and Erickson ended with implications for programs to promote responsible fathering. Programs need to involve a wide range of interventions, "reflecting the multifaceted influences on fathering." There is need for evaluation studies and for researchers to work with practitioners.

Interest in fathering has been growing in recent years, but a major impetus for study and concern came with Family Re-Union III, a national conference on family policy moderated by Vice-president Al Gore in July, 1994. To learn more, check FATHERNET at www.cyfc.umn.edu/Fathernet.

HUD Father Program

Henry Cisneros, when he was HUD secretary, used research developed by the Urban Institute to come up with new rules for public housing which were designed to keep families together. The new goals are to encourage work, responsibility, and marriage and are especially directed toward keeping fathers with their families. Rent rules have been changed to allow first and second earners who earn more to keep more, and not lose their homes. Lease policies that separated families have been loosened. Several cities have trained men to work in the projects and rewarded them for positive behavior, including being a role model. Hartford has had success with a 10-point contract for father's responsible behavior. These programs are extraordinarily hopeful in my mind, and have the potential for changing the climate in our center cities.

The new HUD secretary is Andrew Cuomo, who has been assistant secretary, and who will in all likelihood, continue the same positive policies.

New Resources on Fathers

Non-Custodial Parents' Participation in Their Children's Lives: Evidence from the Survey of Income and Program Participation (SIPP) Vol. I

Summary of SIPP Analysis Vol II Synthesis of the Literature.

These two volumes, prepared for HHS by Westat's Christine Nord and Nicholas Zill, are available in limited numbers from Linda Mellgram at HHS. For anyone interested in the effects of divorce on children and non-custodial parents (both fathers and mothers), these volumes are an excellent resource. They will soon be on Internet, but in the meantime, interested persons could call Linda at 202-690-6806 or 7507, or electronically at lindam@ssw.dhhs.gov.

Spousing: New Name for an Old Concept

The Doherty and Erickson paper pointed out the importance of the husband-wife relationship in determining the parent's relationship with the children. HUD is implicitly recognizing this with their new rules.

I have been promoting the word **spousing** to identify this husband-wife relationship, reflecting the parallel with parenting.

We talk about family-friendly workplaces as helping parenting. A good employer will also think about the needs of a husband and wife for spousing time and couples need to be encouraged to set aside time for the development of this important relationship. After the children are gone, the potential for continuing satisfaction and growth of both men and women will exit of spousing time through the years has prepared the way.

Conclusions

This report has focused on new HH and HUD initiatives which, to me, have been very encouraging in the way they are addressing problems in a rational manner beginning with reviews of the literature, developing theory, identifying promising practices, and moving to evaluation. If ideology can be kept at bay, there should be developing a body of practice which will actually help produce a happier, more productive society.

With this encouragement, let us hope that other research results can actually influence legislation and policies as well
Margaret Feldman
NCFR Washington Representative

NCFR Members
can SAVE up to 63%
on some items
in the New 1997
NCFR Resource Catalog
Call toll free
888-781-9331
for your copy.



S/NP Snippets



Contact Your Section S/NP Reps!

Below is a list of the current Student/New Profession (SNP) representatives for each of NCFR's Sections. Please feel free to contact them with questions or suggestions.

Education and Enrichment

Carol E. Mertens ('96-'97)
319-848-7057
carol-mertens@uiowa.edu

Ethnic Minorities

Ruben Viramontez Anguiano ('96-'97)
517-355-4052
viramont@pilot.msu.edu

Katia P. Goldfarb ('96-'97)
505-277-4575
goldfarb @unm.edu

Family and Health

Kathryn Hoehn Anderson ('95-'97)
715-836-4870
anderske@uwec.edu

Lori K. Kaplan ('96-'97)
312-753-7393
lorik@cicero.spc.uchicago.edu

Family Policy

Hallie Duke ('96-'97)
706-542-4905
hduke@fcs.uga.edu

Family Science

Maureen Blankemeyer ('96-'98)
330-672-9397
mblankem@kent.edu

Family Therapy

David Covey
603-889-0148

Feminism and Family Studies

Renate Houts ('96-'97)
330-672-3249
rhouts@kent.edu

Karen Wilcox ('96-'97)
540-231-5668
kwilcox@vt.edu

International Section

Jacki Fitzpatrick ('95-'97)
806-742-3000 ext. 263
q2jac@ttacs3.ttu.edu

Religion and Family Life

Stephen Smith ('96-'97)
317-477-5979
stephenc@vm.cc.purdue.edu

Research and Theory

Jennifer Kerpelman ('96-'97)
910-334-5307
jkerpel@erickson.uncg.edu

Student Awards Nominations Due April 15

Nominations are due by April 15 for the NCFR Student Award acknowledging a student member who has shown to be outstanding in the field of family science and exhibits promise toward making a significant contribution to the field as a professional. The annual award carries a cash value of \$1,000. Nominations for the Student Award must be submitted by a faculty member. Once nominated,

qualified students are asked to submit the following materials:

1. Three letters of recommendation. One recommendation may be submitted by the nominator, if desired.

2. Problem Statement. A brief statement defining an important problem you see in the field of family science and the steps outlining how you believe the problem could be resolved.

3. Summary of Representative Work. A brief description or summary of a program, research project, publication, etc., which you feel is representative of the quality of your work and of your area of interest.

Both the Problem Statement and Summary of Representative Work should be double spaced in 10 or 12 point type, on one side of the page with at least one-inch margins all around. You may use up to three full pages for each (3 for the statement and 3 for the summary). If you submit additional pages, the fourth and subsequent pages will be removed before the document is distributed to the reviewers.

Caution: Do not send entire manuscripts or copies of journal articles. They will not be included in your packet as it is sent to the committee. Do not send a copy of your vitae—it will not be forwarded to the award committee. In addition, your materials will be blind reviewed—all reference to your name, the name of your reference writers and your institution will be masked on your materials. It is best to keep these references to a minimum.

Do not be concerned with providing reference sections for your essays (i.e., do not use valuable space to list references). Citations in the text of the essays will be assumed to be authentic for the purposes of this exercise.

Prerequisites: All nominees must have been members of NCFR for at least two years. Your professor implicitly vouches for your student status by nominating you.

Ruth Hathaway Jewson Award

Another award open to students is the Ruth Hathaway Jewson Award given in honor of NCFR's second executive director (1956-1984). She guided the association through serene and turbulent times as the membership grew from 2,700 to 4,500 members and the staff increased from 2 to 10.

Jewson shepherded the expansion of *Journal of Marriage and Family Living* to *Journal of Marriage and the Family*, and coordinated acquisition of *Family Relations* in 1968.

She is a crusader for family life education in the schools, assisted in establishing NCFR's CFLE program and was the first recipient of NCFR's Distinguished Service to Families Award in 1974.

The purpose of the award is to support doctoral dissertation research, with the goal of funding the best dissertation proposal submitted by a doctoral candidate in the field of family studies.

The award will be presented at the 1998 annual conference in Milwaukee. The winner will receive up to \$2,500 to pay for research expenses plus a travel stipend of \$750 to defray expenses for attending the conference. Proposals are due by April 15.

Here's what to submit:

1. Title page: Candidate's name, signature and university affiliation; advisor's name, signature and university affiliation.

2. Vita: Academic program major; progress towards and performance in completing the doctoral degree requirements; experience relevant to the dissertation proposal; publications and/or presentations given at professional meetings; membership and activities in NCFR.

3. Letter of support from advisor: Neither the vita, letter of support, nor the title page are included in the 10-page limit for the proposal described below.

4. Research proposal is not to exceed 10 pages. It should contain: a short abstract of no more than 200 words; statement of the research

problem; review of the relevant literature; methodology and rationale for the research; how the research contributes to some aspect of family study or practice; budget accompanied with explanation; bibliography.

Applicants must be current members of NCFR.

The winner/academic advisor must notify NCFR when the winner's doctoral degree has been completed. The winner will be encouraged to submit a paper based on some aspect of the research when it is completed, for presentation at an appropriate forum during the next NCFR annual conference.

Proposals should be sent to NCFR headquarters marked "The Jewson Award Committee." Joan Aldous at the University of Notre Dame (219-631-5281) is the committee chair.
Karen Myers-Bowman Ph.D.
Child Development and Family Science
ND State University
Fargo, ND 58105
701-231-8742
myersbow@plains.nodak.edu

**Intergenerational
Week
is May 18-24.**

Teaching Family Science Conference Set

Time is fast approaching for the ninth annual Teaching Family Science Conference to be held in the greater Chicago area May 16-18. All who teach about families or who are interested in professional development issues in the field of family science are welcome.

This year's theme is "Teaching About Families from a Multi cultural Perspective." A module of invited multi cultural presentations includes Kathleen Galvin and Pam Cooper from the Family Institute at Northwestern University speaking on "Cross-Cultural Family Communication."

Elizabeth Norrell of Northern IL University will offer a video presentation on "Strategies for Enhancing Multi cultural Education," along with a syllabi review session for faculty wanting practical suggestions for multiculturalizing their current course syllabi.

Additional features include Shelley MacDermid of Purdue University on "Open Window, Closed Doors: Experience in Teaching About Multi cultural Families," and Mary Kay DeGenova, University of NH, presenting "Teaching About Families in Cultural Context," based on work from her new Spring 1997 text. A special Indian meal

one evening will be topped off with popcorn and a "late night theater" showing of the Indian film, "City of Joy."

The traditional "think tank" format of these sessions is highly participatory, encouraging considerable networking and cross-fertilization of ideas. In addition to the conference theme, proposals are welcome on any topic related to professional issues in family science such as teaching methodology, professional ethics, curriculum development and assessment. The call for papers and presentations is open until March 15, 1997.

Send your one-page double-spaced abstract to Mary Ann Hollinger, Academic Programs and Interdisciplinary Studies, Mount Vernon College, 2100 Foxhall Rd., Washington, DC 20007. E-mail: DPHMAH@aol.com; phone: 202-625-4569; FAX 202-338-1089.

Local arrangements chair is Deborah Gentry, Dept. of Family and Consumer Science, IL State University, Normal, IL 61790-5060; e-mail: dgentry@ilst.edu; phone: 309-438-7935; FAX 309-438-5037. Please contact her for registration materials. Registration and lodging must be paid by April 15, 1997.

NCFR Members Help Organize Early Childhood Campaign

NCFR has joined the lead association, Families and Work Institute, and national media experts, prominent entertainers, leading foundations, early childhood experts and over 40 organizations in launching an unprecedented public awareness campaign which focuses on the first three years of life and what families and communities can do to promote the healthy development and school readiness of young children in the United States.

On January 9, 1997, NCFR sent Drs. Francisco Villarruel and Margaret Feldman to Washington, DC for a special meeting of all national organizations who are co-sponsoring the campaign. At this meeting Dr. Villarruel reported on measures which NCFR plans to take to promote the campaign for the next three years. A task force will be appointed to work out further plans for NCFR and its affiliates. The National Governor's Conference is also supporting this campaign in each of their states under the leadership of Governor Miller of Nevada and Boynovich of Ohio. NCFR state affiliates may wish to work on this project through their governor's offices.

On March 10, two additional activities were announced:

April 16—National media launch and news conference, with coverage on the Today Show.

April 17—White Conference on Brain Research and Child Development (0-3 years).

Also planned is:

ABC special documentary entitled: I



Margaret Feldman and Francisco Villarruel represented NCFR at the Early Childhood Public Engagement Campaign on January 9.

am your Child - Monday, April 28, 8 p.m. EST.

Hosted by Tom Hanks, produced by Robert Reiner and Michelle Singer Reiner, starring Robin Williams, Mel Brooks, and others. This show will feature fetal development, brain development and the importance of family and community support systems in contributing to the growth of healthy children and future adults.

New Website: On February 15 a new website was launched to describe latest campaign progress, to list the national organizations, state and local coalitions and corporations involved in the campaign, and provide breaking information. Key into

<http://www.iamyourchild.org> for the latest weekly updates or call for a weekly update message at 212-465-2044 extension 321.

Newsweek April 21 issue: This will be a special issue on children's development and the role families and communities play in ensuring a healthy start in life.

A public relations Tool Kit: Coming in early March, the campaign will have available for all state and local coalitions, a tool kit for use in public relations. It will include news releases, media contact tips, news stories, and policy ideas for raising awareness of children's need to be

valued. It can be obtained either on website or by requesting it from Abb Farber, campaign coordinator at farberfwi@aol.com. Or you can call 212-465-2044 extension 221.

NCFR HOMEPAGE Link: Watch further information on NCFR's homepage and in the Report. A link be established to provide viewers with information from both sites.

The five goals of the national organizations joined together in their concerns about children and their families are being addressed by NCFR during coming three years are as follows: a). encourage NCFR members to become involved at their state and local levels To advance public knowledge of the importance of nurturing children in order to ensure their growth into healthy adults c). To provide advice to Families and Work Institute d). To secure resource from NCFR to advance this campaign into the 21st century e). To assist in documenting and evaluating a national effort focused on children and their families.

It is important for NCFR to be involved in this effort in order to provide a balanced viewpoint of the role of families in the development of children. Watch for more news on this in the Affiliate Connection and subsequent issues of Report. Let us hear what you are doing either as an individual, or a member of your state affiliate or some other organization. We welcome your ideas for further work in the campaign. **Mary Jo Czaplewski**
Executive Director

Fast Food Therapy

NEW!



THE 60-SECOND SHRINK 101 Strategies for Staying Sane in a Crazy World

Arnold A. Lazarus, Ph.D., and Clifford N. Lazarus, Ph.D.
Vital new resource provides concise answers to more than 100 of the most common mental health problems presented by clients today.

Written in plain language, and brief enough to be read in about a minute, each chapter addresses a key life issue, beginning with a vignette, followed by a discussion, the psychological implications, and suggestions for solutions. Just a few of the topics covered: faulty vs. realistic thinking; breaking bad habits; problem solving; goal setting; keys to a successful marriage; trust; effective communication; anxiety; depression; anger; moods; and a complete section discussing psychology, psychiatry and psychotherapy to help in pinpointing the best approach for particular problems.

Arnold Lazarus is Distinguished Professor of Psychology at Rutgers University and winner of the prestigious Cummings Foundation "Psyche" award for 1996. Clifford Lazarus, a clinical and neuro psychologist, is Director of Comprehensive Psychological Services in Princeton, New Jersey.

\$12.95 Softcover Available May, 1997

EVERY SESSION COUNTS

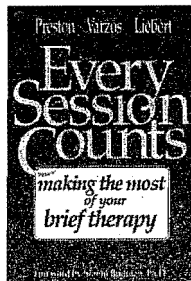
Making the Most of Your Brief Therapy

John Preston, Psy.D., Nicolette Varzos, Ph.D.,
Douglas Liebert, Ph.D. **\$9.95 Softcover 128 pages**

"Brief therapy" is the name of the game in health care today. Managed care systems and insurance companies demand short-term procedures for these tight-budget times. Here's an invaluable resource for therapists to provide to clients: this concise handbook helps you make the most of six-to-ten sessions.

"This book has lots of basic information and practical suggestions to help clients access services and to set and achieve realistic treatment goals."

— Michael F. Hoyt, Ph.D., Author, *Brief Therapy and Managed Care*



Impact Publishers®
Post Office Box 1094, Dept. NCR
San Luis Obispo, California 93406

Ask your bookseller, or to order call
1-800-246-7228
Write For Our Free Catalog!

I Am Your Child

A public engagement campaign on the importance of the first three years of life, involving parents, policymakers, educators, business leaders, and local, state, and national organizations.

Watch for:

- Toll-free number, written materials, video, CD-ROM, PSAs and a World Wide Web Site.
- ABC Television Special April 28, 8 p.m.
- Special edition of *Newsweek*

Join the campaign! For more information or to order our book, *Community Mobilization: Strategies to Support Young Children and Their Families*, contact:

Families and Work Institute
330 Seventh Avenue New York, NY 10001
Phone: (212) 465-2044 x. 321 Fax: (212) 465-8637
E-mail: Farberfwi@aol.com Website: <http://www.iamyourchild.org>

 **Families and Work Institute**

Family Organizations Have Broad, Diverse Goals

Prepared by Catherine Chilman Ph.D.

The recent proliferation and the growing impact that some national family organizations appear to have on family programs and policies at national, state, and local levels stimulated NCFR's Public Policy Committee to undertake a brief study of 25 of them. They were selected because they are in the public domain (not in private business), have "family" in their titles, or are known to have a general rather than narrowly specific family-related agenda.

Information was gathered from their own publications sent at our request, including brochures, newsletters, journals and books. The survey includes each organization's self-stated major characteristics, programs and policy principles, and goals and functions. Further resources were recently selected books and scholarly articles about the background, origins, goals, and activities of many of these organizations.

A few highlights of our overall findings are given here.

❖ There was a marked spurt in the formation of new national family organizations between 1970 and 1995. According to our presently available data, 18 new organizations were developed in this 25-year period.

In contrast, only seven had been founded in the 41 years between 1909 and 1950. No new national family organizations emerged during the 1950s and only one in the 1960s. In general, the major goals and activities of this early group of organizations were directed toward further development of the profession or discipline they represented and services to their members. (This included NCFR, 1938.)

Twelve of the 18 new organizations (1970-1995) were chiefly oriented toward advocacy and political action.

A second somewhat smaller, group of six organizations were directed towards the further growth or evaluation of new community-based, comprehensive, integrated, family-centered support and preservation services.

❖ Most of the nine politically active advocacy organizations (all founded between 1970-1995) described themselves as belonging to the conservative religious right and most of this group were evangelical Christians. A smaller politically active group (two in number) saw themselves having a moderate political position. Only one of the 12 political advocacy groups had a self-stated liberal agenda (Children's Defense Fund).

Only two of the national family organizations founded after 1970 emphasized professional and scholarly issues along with research (the Committee on Children, Youth and Families of the American Psychological Association (1985) and the Family Impact Seminar (1976)).

❖ Most of the politically active advocacy organizations tended to have

exceptionally large memberships, numbers of staff, publications, budgets and radio and T.V. shows. This was less typical of the generally less political organizations.

❖ All of the organizations studied viewed families as being in serious trouble and urgently in need of assistance. However, families were variously defined, troubles were identified quite differently, and the solutions to their problems were prescribed in strikingly different ways.

❖ The nine self-described conservative organizations tended to take strong stands against most forms of governmental intervention in respect to families, especially financial assistance to pregnant and parenting teens, sex and family planning education in the schools, prohibition of prayer and religious studies in the public schools, legalized abortion, no-fault divorce, homosexual marriages, high federal taxes, government supported child care centers, federal welfare programs, labor unions, and in many instances, affirmative action based on gender, race, and ethnicity. Most saw a return to the traditional two-parent married family with children as essential to alleviate many personal and societal problems. Some urged a joining of religious and political concerns and actions to bring about essential changes in programs and policies related to families (for example: the Christian Coalition or the Family Research Council).

❖ The other national "family" organizations in our study took less clear, or no strong public advocacy positions on most of these issues (for example: American Psychological Association, Family Resource Coalition, and NCFR). Organizations like these are more apt to emphasize such functions as research, development and strengthening of their discipline and dissemination of research findings.

❖ We questioned why these marked shifts in numbers, activities, and basic principles of national family organizations had occurred between 1970 and 1995. (1) Why had there been a rapid growth in politically active national family organizations, most of them conservative in their views? (2) Why had new family support and preservation organizations emerged?

Some answers to question 1 were found in a number of recent books and articles, most of them scholarly in nature. A brief selective synopsis reveals important and pertinent findings. They emphasize nationwide legislative, judicial, social, scientific, political, and economic changes from the 1960s through the present. These changes include the social and sexual revolutions of the '60s, development of new, efficient contraceptives, legalization of their use and of abortion, passage of the Equal Rights Amendment by Congress, the strong feminist movement, affirmative action legislation, rapid growth of sex and family planning education in the schools, restriction of religious practices in schools and other public places, increased federal taxes on middle and low income families, and decreased real wages for this group, the growing gay rights movement, changing

definitions of the family by social scientists, and the like. It can be readily seen that many of such developments might well be deeply disturbing to conservatives, especially, perhaps, Christian religious fundamentalist groups.

Question 2 asks why six new national organizations directed towards different methods of family support and preservation arose between 1970 and 1996. Some answers are found in the fostering of these organizations and their programs by both large private foundations and the Department of Health and Human Services. New family program methods arose because of two major factors:

(a) Increased pressure on families and a resulting rise in family instability and dysfunction including child abuse and neglect.

(b) The perceived need for more effective child and family assistance programs to replace those more traditional that were often marked by high costs, fragmentation and bureaucratization of services, frequent placement of children away from home, insensitivity to cultural diversities, and so on.

In our judgement, an increased understanding of the structures, positions, and activities of these various national organizations can be very helpful to NCFR members and their colleagues and students who are interested in programs and policies affecting families. A detailed report of this study will be available at NCFR headquarters at the request of members. Payment of the costs of printing, handling, and postage will be charged.

The report will include:

(a) summaries of the self-stated characteristics of each organization in terms of its founding, current location, leadership, structure, principles, goals, publications, and activities, and

(b) a review and analysis of major findings. These include a discussion of the variety and nature of national family organization trends over the years and at present as well as some of the probable reasons and effects of these trends. This section is based on findings in (a) above, and a study of a number of pertinent objective scholarly books and articles on the subject. References to both (a) and (b) sections are included in this report.

Organizations surveyed for this report are (in alphabetical order): American Association of Family and Consumer Sciences (1994)—the restructured American Home Economics Association (1909); American Association of Marriage and Family Therapy (1942); American Psychological Association Committee on Children, Youth and Families (1985); American Sociological Association—Family Division (1966); Association of Family Based Services (1996); Catholic Charities (1911); Center for the Study of Social Policy (1979); Children's Defense Fund (1972); Child Welfare League of America (1970); Christian Coalition (1989); Concerned Women of America (1979); Council on Families in America (1993); Democratic Leadership Council

(1985); Eagle Forum (1975); Focus on Families (1977); Family Research Council (1981); Family Resource Coalition (1981); Family service America (1911); Heritage Foundation (1985); Lutheran Office for Government Affairs (1945); National Association for Social Workers (1955); National Center for Service Integration (1991); National Council on Family Relations (1938); National Resource Center for Family Centered Practice (1981); Traditional Values Coalition (1981).

Organizations to be added later include the National Council of Churches and Jewish Family Organization.

Member News

NCFR member and Membership Vice-president Rosemary Blieszner and her family recently established a \$10,000 fund to help support a Montgomery County (Blacksburg, VA) program that offers teachers funding each year for innovative programs in the schools.

The donation, set up in an endowment, was made through the Community Foundation of the New River Valley.

Rosemary's husband, Steve Gerus, noted in an article in the Roanoke Times in December that donating to the Community Foundation meant they got to have "all the fun (of doing something for their community) without the hassle."

Their donation will aid the Star Grant system. Teachers apply for a grant to fund a special program that would not otherwise be available to students.

Former Family Relations' editor Mark Fine has been named the next editor of Journal of Social and Personal Relationships.

According to the executive committee of the International Network of Personal Relationships, Fine "is a broad and respected scholar who has published authoritative work on a wide variety of issues."

April 1 MAC Deadline

The deadline for submissions to NCFR's 29th annual Media Awards Competition is April 1.

Francisco A. Villarruel of MI State University is the competition director. Winning entries will be featured in the January 1998 issue of Family Relations.

For entry forms and more information contact Theresa at headquarters: toll free 888-781-9331 ext. 10.

Mentoring Program Makes Matches

The establishment of an NCFR "Mentoring Network" is underway. Requests for 1:1 mentoring that were made at the Open House during the annual conference last November (or after the conference) are being processed.

Those requesting and offering mentoring will be receiving letters or e-mail messages about potential mentoring connections in March. In addition, those seeking mentoring will be given the names of section representatives who may be able to help them find a suitable mentor and/or suggest other informal forms of mentoring experiences available. Representatives of some of the NCFR Sections and special committees are gathering information about NCFR mentoring opportunities currently available.

What follows is a brief report on what the representatives have shared to date.

- **Anne Stanberry**, Association of Councils president, is contacting the Affiliate presidents to ask about mentoring opportunities occurring at the regional and state levels.
- **Don Swenson**, chair of the Religion and Family Life Section, is finding out from the section members who is interested in providing mentoring.
- **Estella Martinez**, chair of the Action for Diversity committee, reports that they have a subcommittee working on developing mentoring supports.
- **Sandra Stith** is the mentoring coordinator for the Feminism and Family Studies Section. When she receives requests for mentoring, she contacts Section members who may be able to offer the type of mentoring requested, and then facilitates connections between mentors and mentees.
- **Velma Murry**, chair of the Ethnic Minorities Section, reports that the section has long been involved in informal mentoring. In addition, Norma Burgess, the previous chair, shared during the 1996 conference information about the role of mentorship with an emphasis on how to establish, nurture, and maintain a mentoring network.
- **Jennifer Kerpelman**, Student/New Professional representative of the Research and Theory Section, is assisting those seeking mentoring from a Research and Theory member, and is helping students and new professionals to obtain opportunities to participate in NCFR activities, such as reviewing proposals and presiding in sessions.
- **Mary Ann Hollinger**, vice-chair of the Family Science Section, reports that they are actively working to assist students and new professionals develop their professional identities. Students and professionals within this section are invited to share interests and find common linkages.
- **Sally Martin**, chair of the Education

and Enrichment Section, states that a good deal of informal mentoring is occurring within the Section. The Teaching Round Tables also have been a good forum for mentoring.

- **Karen Myers-Bowman**, Student/New Professional representative to the NCFR Board of Directors, has made the establishment of a mentoring network a priority. She is a resource for students and new professionals interested in mentoring connections. She also will assist students/new professionals with increasing their involvement in NCFR. During the S/NP meeting at the 1996 annual conference, Karen, Pam Choice (S/NP elect), and other S/NP Section representatives described numerous ways that students and new professionals can become involved in NCFR. In addition, Sharon Dwyer, the outgoing S/NP representative, has compiled a handbook for students and new professionals that is expected to be available soon.

It is clear that mentoring in NCFR takes many forms. Current mentoring opportunities range from establishing 1:1 mentoring relationships to participating in sessions that are designed to enhance professional development to being part of

a Section that meets specific needs and interests that the members have. Section and committee representatives are connecting with the membership committee so that a coordinated mentoring network can be established and developed throughout NCFR.

When seeking mentoring, it is useful to look first within the Sections, since most people join these Sections because they share common interests with the other members. Section and committee representatives will continue to dialogue about mentoring, and opportunities for all members to discuss and become involved in mentoring, will be provided at the next annual conference.

I thank everyone for your patience as we attempt to establish opportunities to connect with other NCFR members in ways that will maximize your benefits from this organization. If you have requested mentoring and do not receive a response by April, 1997 please contact Jennifer Kerpelman at 910-334-5307 or JLKERPEL@ERICKSON.EDU. Also, the membership committee would appreciate hearing your ideas about what you would like to see provided by the NCFR mentoring network.

Jennifer Kerpelman
HDFS Dept./228 Stone Bldg.
University of NC-Greensboro
Greensboro, NC 27412-5001

On the NET!

Access NCFR's Website at:
www.ncfr.com

It contains information on NCFR's publications, products, CFLE program, annual conference, committees, activities and events.

You may communicate with NCFR headquarters electronically at:

ncfr3989@ncfr.com

Some staff members also have E-mail addresses:

Mary Jo Czaplewski:
czaplewski@ncfr.com

Dawn Cassidy:
cassidy@ncfr.com

Doris Hareland:
HarelandD@ncfr.com

Brenda Hoffman:
HoffmanBJ@ncfr.com

John Pepper:
Pepperw@ncfr.com

Kathy Royce:
kcroyce@ncfr.com

Cindy Winter:
wintersc@ncfr.com

Fahs-Beck Fund Offers Grants

The Fahs-Beck Fund for Research and Experimentation, a donor-advisory fund established with the New York Community Trust, has announced two grant programs.

Doctoral Dissertation Grant Program: Grants of up to \$2,000 are available to help support doctoral dissertation expenses of students in the United States and Canada. Proposals must have clear relevance to major social problems affecting families or individuals or to interventions designed to assist individuals, couples, or families in their functioning and well-being. Proposals are considered two times a year with deadlines of May 15 and November 1. For application form and guidelines, write to: Doctoral Dissertation Grant Program, The Fahs-Beck Fund for Research and Experimentation, c/o Precision Business Services, 105 Twin Creek Drive, Kennett Square, PA 19348-2640.

Post-doctoral Grant Program: Grants of up to \$10,000--or \$15,000 if an experimental design is used--are available to evaluate innovative interventions designed to prevent or ameliorate major social, psychological, public health, or literacy problems. To be eligible for consideration the project must: 1) have an innovative service component that is provided by an appropriately accredited, certified, or otherwise vouched for service agency or institution of higher learning; 2) have a research component that is under the direction of a person with an earned doctorate in a relevant discipline and with relevant experience; and 3) be administered by a public or non-profit organization with tax exempt status and appropriate accreditation or certification that agrees to accept administrative responsibility for the

project and submit financial forms and reports as required to the Fund.

Funds are to be expended entirely for the research expenses of the project.

There is one cycle of funding a year with a deadline of May 15.

For a copy of the application form and guidelines write to: The Post-doctoral Grant Program, The Fahs-Beck Fund for Research and Experimentation, c/o Precision Business Services, 105 Twin Creek Drive, Kennett Square, PA 19348-2460.



JMF AND FR BACK ISSUE SALE

~~30%~~ ~~40%~~ **50% OFF**

*We Decided to Give You
Our Best Deal Ever!*

50% OFF Back Issues Prior to 1991
20% OFF Issues 1991-1994

Missing an Issue?
Need to replace a damaged copy?
Need a second copy of a favorite issue?

**Now is the perfect time to enhance
your personal library.**

Contact Kathy at NCFR Headquarters
TOLL FREE **1-888-781-9331** EXT. 21
612-781-9331 EXT. 21; KCROYCE@ncfr.com

OFFER DOES NOT INCLUDE BOOKS OR TOPIC PACKAGES

TCRM Workshop Proposals Due

You are invited to participate in the 27th annual Theory Construction and Research Methodology (TCRM) Workshop November 5-6, 1997 at the Hyatt Regency Crystal City in Crystal City, VA. The workshop precedes the NCFR annual conference. The theme for the NCFR Conference is "*Fatherhood and Motherhood in a Diverse and Changing World.*" Proposals reflecting this theme are encouraged. However, all proposals regardless of theme will receive equal consideration for inclusion in the program.

Submit your proposals by March 21, 1997 under the following types:
Regular Working Paper for Discussion
Brain Storming Papers
5-minute Project Update
Debate on a Significant Issue

Roles for Participants
Here are the special roles participants can perform in addition to

participating in the workshop discussion. 1997.

Presenter:
This may be a regular presentation, brainstorming paper, 5 minute update or debate.

Presider:
Presiders keep time and encourage broad discussion. Presiders are welcome to join the discussion. This is an important role so please check the box on the registration form and send it in by May 1, 1997.

Discussant:
TCRM discussants are the keys to our success. You need to give a written paper (3-5 pages) to the presenter(s) and chair by October 1, 1997. You should prepare and bring a short (1-2 pages) handout for the participants at the workshop (50 copies). To offer to be a discussant, indicate your areas of interest and expertise and submit the form along with your registration fee by May 1,

The procedure for the workshops has been proven to provide a dynamic and interesting program. Each discussant gives a 10-15 minute presentation/discussion of the paper(s) at the start of the session. The "presenter" responds to these comments, but is not supposed to present a formal rejoinder paper. Then the session is open to all.

Registration
The registration form, fees, and proposals should be sent to the chair: Barbara H. Settles/TCRM, 404 Dove Drive, Newark, DE 19713; settlesb@udel.edu; FAX: 302-368-5763; Phone: 302-368-0263.

For copies of the registration and application forms, please visit NCFR's website at www.ncfr.com.

TCRM Funds Projects

The TCRM Executive Committee requests proposals for developmental projects appropriate to the Royalty fund objectives. Proposals up to \$2500 can be considered and approved by the committee. Larger projects will be reviewed and recommended to the business meeting in November. Proposals will be reviewed following submission on March 1, June 1 and September 1, 1997. One hard copy with a cover letter and signatures of the prospective grantees is needed for our records.

Name of Fund: Theory Construction and Research Methodology Royalties Account.

Purpose: To support projects that advance theory construction and research methodology.

Rationale: Theoretical works often require seed moneys to reach the point they are attractive to a national publisher.

Restrictions: Funds will not be used for personal purposes or to supplement the operational account of TCRM. Funds will not be used to support other sections of NCFR or NCFR administration.

Please send proposals also by E-mail for circulation to our committee.
Barbara H. Settles
404 Dove Drive
Newark, DE 19713
E-mail <settlesb@udel.edu>
Home Phone: 302-368-0263
FAX: 302-368-5763
University of Delaware Phone: 302-831-2934.

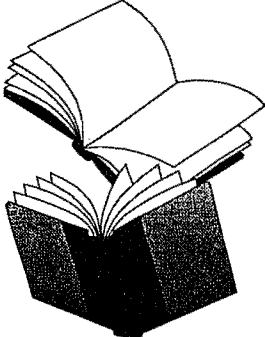
Minority Issues Conference Papers Due

Presentations are being accepted for the second biennial conference on Minority Issues in Prevention to be held February 5-6, 1998.

This conference provides a forum for professionals and students in the social sciences to present and discuss new programs, research, and policy initiatives to enhance the well-being of low-income and ethnic minority children, their families, and the communities in which they live.

In addition to faculty and other prevention research professionals, undergraduate juniors, seniors, and candidates for post doctoral fellowships who are interested in training in prevention research are encouraged to attend. Competitive scholarships to support student attendance are available.

Deadline for submission of proposals is September 1, 1997. For information on presentation formats and application for student travel support contact: Dr. Mark Roosa, (602) 727-6122; e-mail: Mark.Roosa@asu.edu.



Prices Are Falling on Some of Our Books.

We've slashed prices on these popular titles:

	Was	Member Price	Was	Non-Member Price
Family Health: Data to Policy	\$11.95	Now \$8.00	\$16.95	Now \$10.00
Families in Rural America	\$11.00	Now \$ 5.00	\$16.00	Now \$ 6.50
One World Many Families	\$16.95	Now \$ 8.50	\$21.95	Now \$10.50
2001: Preparing Families	\$ 8.00	Now \$ 4.00	\$13.00	Now \$ 6.00
2010: Families and Health Care	\$14.95	Now \$ 6.00	\$19.95	Now \$ 8.00
2010: Families and Adolescents	\$14.95	Now \$ 6.00	\$19.95	Now \$ 8.00
2010: Families and Violence	\$14.95	Now \$ 6.00	\$19.95	Now \$ 8.00
Work and Family Interface	\$31.95	Now \$16.50	\$36.95	Now \$19.50
Understanding Partner Violence	\$31.95	Now \$14.50	\$36.95	Now \$17.50
Parents and Adolescents	\$31.95	Now \$14.50	\$36.95	Now \$17.50
Initiatives for Families	\$14.95	Now \$ 8.50	\$19.95	Now \$10.00
Teaching Family Policy	\$18.95	Now \$ 9.00	\$23.95	Now \$11.00

This Sale Ends May 31, 1997.

To order: Call NCFR toll free at 888-781-9331, ext. 23;
E-mail: ncfr3989@ncfr.com;
or send your order and payment to NCFR, 3989 Central Ave. NE,
Suite 550, Minneapolis, MN 55421.

You Must Mention This Ad to Receive These Special Prices.

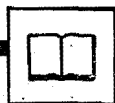
Rpt397



Section News



New Officers Welcomed, Awards Announced



In the last issue of **Report**, the **Education and Enrichment Section** congratulated the three recipients of our Student/New Professional Travel Award. Of the students who submitted proposals, Dawn Goettler, Lisa Mathews, and Suzanne Smith received the highest scores in the 1996 peer review process.

In this issue, I want to congratulate our newly elected Section officers: Howard Barnes, Chair-elect; Maxine Hammonds-Smith, Secretary/Treasurer/Newsletter Editor; and Carol Mertens, Student/New Professional Representative. Working with this group is a delight. They are responsive and responsible, committed and caring. All of us are diligently pursuing our Section's Plan of Work for 1997. Here are a few of the tasks underway:

1997 Pre-Conference Planning Group

Carol Rubino has provided leadership for a team including Linda Dannison, Esther Devall, Dana Murphy, Vickie Nelson, and Janet Shepard. This hard working group has planned an all-day pre-conference session with several options designed to meet the needs of our diverse membership. In addition, members of the Parenting Education Network (PEN) will explain their organization and lead a discussion during an informal lunch. Look for a detailed description of the Pre-conference in our early fall newsletter.

1998 Pre-Conference Planning Group

Rusty Dannison, Bob Keim, Shirley Klein, Dana Murphy, Vickie Nelson, and Lynette Olson generously volunteered to start planning for the 1998 pre-conference workshop. They will begin their work in earnest after the 1998 conference theme is identified this April and suggestions from the Focus Groups have been received.

Committee on the Use of Royalties

At the Section Business meeting, members completed a survey concerning the use of Royalty Funds and passed a motion to use \$1000 to initiate a special project. Carol Mertens, Joan Comeau, and Terry Olson are reviewing the survey results to identify a worthy project.

1997 Annual Conference Program

Our Section has received 113 proposals for the 1997 meeting. Howard Barnes is matching proposal content with reviewers' expertise prior to mailing the proposals out for review. Judging by the inquiries I received before the due date, members have submitted a varied and intriguing group of proposals. Howard and I appreciate the many Section members who agreed to serve as reviewers this year.

Section newsletters

Our Section provides financial support for two newsletters each year. One went out in January; a second will be published in early fall. We welcome

articles concerning the Focus Groups, tips for practitioners and educators, and other news of interest to the membership. Please FAX your suggestions to our versatile Section Officer, Maxine Hammonds-Smith, who has taken on three separate roles for Education and Enrichment (FAX: 713-313-7228; E-mail: maxinehs@aol.com).

Many members of Education and Enrichment are involved in the work of the Section. I appreciate the vast expertise as well as the time and energy individuals are committing to our professional endeavors. If you have suggestions or wish to join any of these efforts, please contact me at smartin@scs.unr.edu or call 702-784-6490.

Sally Martin, CFLE
Section Chair
Associate Professor/State Ext. Specialist
University of NV-Reno
Reno, NV 89557-0131



One of the highlights for many participants of the 1996 NCFR annual conference in Kansas City was the special lecture given by Harriet Lerner on Saturday afternoon. The **Family Therapy** and **Feminism and Family Studies** Sections co-sponsored this lecture entitled "Secrecy, Silence, and Truth Telling in Families." Many attendees also enjoyed the workshop co-sponsored with the **Ethnic Minorities** Section led by Ken Hardy and Norma Burgess.

Approximately 50 members of the **Family Therapy** Section attended the annual business meeting. Two student awards were given: Jonathan G. Sandberg received an award for his proposal entitled "Therapists Attitudes toward Assessment and Clinical Research in Marriage and Family Therapy;" Shannon B. Dermer received an award for her proposal entitled "Demonstrated Efficacy of Models of Marriage and Family Therapy: An Update of Gurman, Kniskern, and Pinsoff's Table" which was co-authored with Lee Johnson, Lorrie Gfeller-Strouts, and Jonathan Sandberg. Both students are from Kansas State University.

Scot Allgood, outgoing chair, recognized the outgoing officers and presented them with certificates: Janie Long, vice-chair; Karen Rosen, secretary/treasurer; Julie Serovich, member-at-large; Scott Woolley, student/new professional; Tony Jurich, liaison. In "taking the pulse" of the Section, Scot Allgood noted that 55 proposals were submitted for the 1996 conference, the largest number in 7 years.

Scot led discussions about the processes of changing the Section by-laws and selecting student/new professional awards. The membership needs to approve by-law changes which then need to be sent to the NCFR Board

of Directors. It was decided that the criteria used for selecting this year's student awards be put in writing and passed on to the next awards committee. Four Section members were nominated to the nominating committee to develop a slate of nominees for office: David Wright, Ken Hardy, Karen Wampler, and Charles Hendrix.

When Scot turned the meeting over to Janie Long, incoming chair, she introduced the other incoming officers: Karen Rosen, vice-chair; Suzanne Bartle-Haring, secretary/treasurer; Lydia Marck, member-at-large; David Covey, student/new professional; Colleen Peterson, liaison. Janie thanked Scot Allgood for his two years of service as Chair for the section. Tom Blume, Volker Thomas, Jim Harper, Thom Curtis, and Kathleen Briggs volunteered to review proposals for student awards.

Janie began her tenure as Chair by encouraging each person attending the meeting to bring someone with them to next year's meeting in Crystal City, VA to enhance attendance and participation in the operation of the Section. Since our co-sponsored special lecture was such a success this year, members were in favor of co-sponsoring a speaker for next year. Janie Long agreed to talk with the **Family Health** Section who had already expressed interest in such an arrangement. Members were invited to give their feedback about the speaker and topic.

Other suggestions about activities for next year included: a research methodology symposium or workshop; a round table or other event to facilitate new professional networking; discussants at the paper presentations rather than just presiders; and co-sponsoring an event with the **Research and Theory** Section. Janie suggested Section members talk among themselves to develop a solid plan. Tony Jurich reported on his plans as AAMFT president to link several organizations pertinent to MFT (i.e., AAMFT, NCFR, and AFTA) to further the production of quality outcome research in the field.

Post Conference Update

Section members voted to approve all by-law changes. During the spring Board meeting, Janie Long will make a motion to have them approved. Janie has successfully negotiated with the **Family Health** Section to co-sponsor Stuart Hauser, professor of Psychiatry at Harvard University, as a speaker for the 1997 annual conference. He has conducted a longitudinal study of early and mid-adult outcomes for a clinical sample of adolescents and their families. Speaking of the 1997 conference, 40 section members have volunteered to review proposals — outstanding!!
Karen K. Rosen
Virginia Tech, Northern Virginia Center
7054 Haycock Road
Falls Church, VA 22043
703-538-8461
krosen@vt.edu



NCFR's **Feminism and Family Studies Section** is seeking applicants for two awards to be given at the November, 1997, annual conference in Crystal City, VA. Applicants need not be members of NCFR, but we welcome new members to the Section and organization.

The Outstanding Research Proposal from a Feminist Perspective is given in honor of the late Jessie Bernard. Graduate students and new professionals (with up to five years' post-doctoral work) are encouraged to apply for this award of \$750 to fund feminist research. Proposals will be reviewed for their potential contribution to feminist scholarship and the use of feminist frameworks and methods.

Applications should include: a) an abstract of 100 words or less; b) a five-page (maximum) proposal outlining the project's purpose, theoretical foundation, research methods, and potential contribution to feminist scholarship, and c) a half-page budget. A summary of the recipient's research results will be published in the Section newsletter, and the recipient will be asked to present a report of their project and findings at the 1998 NCFR annual conference. The award will be presented at the 1997 meeting; recipients will receive \$400 toward their travel to the 1997 annual conference.

The Outstanding Contribution to Feminist Scholarship Paper Award is accompanied by a gift of complimentary books from Westview Press and a \$250 cash award. Applications for this award are open to all graduate students and new professionals (with up to five years' post-doctoral work).

Papers should demonstrate contribution to feminist scholarship and the use of feminist frameworks and methods. Applicants should be the sole author or first author of the paper; both published and unpublished papers will be considered, although the paper should be at near-submission status. A summary of the paper will be published in the Section newsletter, and the award will be presented at the 1997 NCFR annual conference. Recipients will receive \$400 toward their travel to the conference.

Authors should identify themselves only in a cover letter so that all entries can be reviewed anonymously. Letters of support are not required. To apply, send SIX copies of the proposal or paper by April 10, 1997 to: J. Elizabeth Norrell Ph.D., FFSS Awards Committee Chair, School of Family, Consumer, and Nutrition Studies, Northern IL University, DeKalb, IL 60115; 815-753-6339; FAX 815-753-1321; jenorrell@niu.edu.

NOMINATE YOUR COLLEAGUES FOR 1997/98/99 AWARDS!

The National Council on Family Relations, its Sections and Affiliated Councils present several awards to recognize excellence in the Family field. The **DEADLINE FOR APPLICATIONS IS APRIL 15, 1997** (exceptions are noted below).

Ernest G. Osborne Award (1997)...

Given to an individual for outstanding teaching in the Family Field. A check for \$1,000 and a plaque are awarded to the winner.

Marie Peters Award (1997)...

Recognizes distinguished scholars, researchers, and practitioners who have made a significant contribution in the area of Ethnic Minority families. The award is presented in memory of Marie F. Peters, a former Board member of NCFR and the Ethnic Minorities Section. The winner will present the Marie Peters Lecture during the 1997 Conference. A check for \$1,000 and a plaque are awarded to the winner.

NEW AWARD!!

Ruth Jewson Award (1998)...

To fund the best dissertation proposal submitted by a doctoral candidate. The award is in honor of **Ruth Hathaway Jewson**, NCFR's second Executive Director.

Fellowship Guidelines

Nominations will be accepted for the 1998 charter NCFR Fellows after the review committee is elected this Spring. Here are guidelines and policies for Fellowship Status:

Fellowship Status in NCFR is an honor awarded to relatively few members of NCFR who have made *outstanding* contributions to the field in the areas of scholarship, teaching, application, or professional service.

Examples of outstanding contributions: published scholarship that has reshaped the field of family relations; a history of innovative or influential workshop presentations; development and implementation of innovative interventions or programs, curricula for training professionals, or social policy relevant to family relations; and a consistent record of superior contributions to NCFR.

Applicants must: be nominated by another NCFR member; have received the terminal degree typical of professionals in the particular field of expertise from an accredited graduate or professional school (this criterion may be waived in special circumstances); have at least 5 years of professional experience after the receipt of the graduate or professional degree; be a member of NCFR for at least 5 continuous years at the time of nomination; have the endorsement of three individuals (including the nominator), at least two of whom are NCFR members, who describe the *outstanding* nature of the applicant's contributions.

The proposal, which will be used to decide the winner of the Award, should include the following:

- ◆ a statement of the research problem
- ◆ review of the relevant literature
- ◆ the methodology
- ◆ a rationale for the research
- ◆ a budget and budget explanation
- ◆ a bibliography
- ◆ a short abstract of not more than 200 words.

The above should not exceed ten pages. The title page for the proposal should include the candidate's name, signature and university affiliation along with the same information for the advisor. The candidate should also submit his/her vita and a letter of support from his/her advisor. The applicants' vitae should give some indication of their academic program, progress and performance; any experience relevant to their undertaking the dissertation research as well as any publications or presentations at meetings having to do with the field of the family. **Applicants must be members of NCFR.** Neither the vita, the letter of support nor the title page is to be included in the ten-page limit for the proposal. The winner/academic advisor must notify NCFR when the winner's doctoral degree has been completed. The winner will be encouraged to submit a paper based on some aspect of the research when it is completed for presentation at an appropriate forum at the next NCFR annual conference.

NCFR Student Award (1997)...

Given to an NCFR graduate student member who has demonstrated excellence as a student with high potential for contribution to the field of family studies. A plaque and check for \$1,000 are presented annually.

Criteria for selection: 1) A student currently enrolled in a Graduate Program whose work shows promise of significant contribution to family studies. Research projects or other work need not be completed at the time of nomination; 2) Membership in NCFR for at least 2 years. Qualified students who are nominated will need to supply other supporting credentials: a) additional letters of support; b) brief statement defining an important problem they see in the family studies field and outlining possible steps towards solution; c) brief summary of a personal program, research project, publication representing the quality of their work and area of interest.

Attention Focus Group Chairs!

All Focus Group reports are due at NCFR headquarters by May 1. If your report is not received by then, your group will **NOT** receive time and space on the NCFR annual conference program.

Contact Sue at NCFR: toll free 888-781-9331 ext. 11.

NCFR/Sage Student/New Professionals Book Award (1997)...

Awarded to an NCFR graduate student/new professional with a manuscript in progress which has not previously been published. This award is given for a scholarly manuscript judged to be worthy of publication as a monograph. Manuscripts are judged on the basis of their potential contribution to knowledge about marriage and family life. The winning manuscript is published in the Sage Publications Series *Understanding*

Applicants should send 2 copies of their manuscript, 1 copy of their curriculum vita, a cover letter indicating ideas being considered for improving the manuscript, certifying that eligibility requirements are met, and the name and address of a current (or former) academic advisor to **Margaret N. Zusky**, Senior Editor, Sage Publications, 31 St. James Ave., Suite 510, Boston MA 02116. Phone: 617-753-7505; Fax: 617-753-7510; E-mail: mzusky@aol.com. **Deadline for submission is March 1, 1997.**

Families. A \$500 check from Sage Publications is also presented. The award is sponsored by **Sage Publications, Inc., and NCFR**.

Distinguished Service to Families Award (1999)...

Note: This award is now given biennially in odd-numbered years. Given in recognition of exceptional leadership and/or service to improve family living. The contributions in "action" programs represent the importance of family relationships in the future rather than the past. If the award winner is in the Policy field, the award is given in honor of **Dr. Harold Feldman**. If the recipient is in a health field, it is in honor of **Dr. Fred Bozett**.

Who may be nominated: National leaders in the family field, political figures, entertainers, volunteers who have played significant roles in helping families. **Nominees need not be NCFR members** to be eligible. A check for \$1,000 and a plaque are awarded.

NOMINATION FORM 1997/1999 National Council on Family Relations Awards

DEADLINE FOR NOMINATIONS: April 15, 1997
(exceptions are noted in the descriptions).

Instructions: Use one form for each person/organization you wish to nominate. **Attach all documentation including letters of recommendation and other supporting materials with this application form.** Send to NCFR Awards, 3989 Central Ave. NE, #550, Minneapolis, MN 55421 by **April 15, 1997**. Duplicate this form if you wish to nominate more than one person. Contact NCFR toll-free: 888-781-9331; phone: 612-781-9331; fax: 612-781-9348; e-mail: ncfr3989@ncfr.com; website: www.ncfr.com with questions.

Check the Award for which you are nominating a candidate:

- | | |
|--|---|
| <input type="checkbox"/> Ernest G. Osborne Award | <input type="checkbox"/> NCFR Student Award |
| <input type="checkbox"/> Marie Peters Award | <input type="checkbox"/> 1999 Distinguished Service to Families Award |
| <input type="checkbox"/> Ruth Jewson Award | |

Name of Nominee _____

Employer _____
(if student, indicate program and institution)

Address _____

Phone (____) _____ E-mail: _____

Names of 3 additional persons to document nominee's qualifications (include documentation with this form):

Name _____

Address _____

Phone (____) _____ E-mail: _____

Name _____

Address _____

Phone (____) _____ E-mail: _____

Name _____

Address _____

Phone (____) _____ E-mail: _____

Your Name (please print) _____

Your phone (____) _____ E-mail: _____



Conference Comments



You Can Help Keep Conference Fees Down

I am excited about the 1997 NCFR Annual Conference!! We have just sent 643 proposals to the Program Committee for review -- an increase of 109 proposals from last year - our highest number of submissions in history! Most of the proposals addressed the theme, *Fatherhood and Motherhood in a Diverse and Changing World*. It has been my observation that the number of proposals is proportionate to the final attendance at the conference. If this trend is true this year, we could easily have 1,350 - 1,400 attendees!

NCFR always aims to keep the Conference affordable for all. However, costs increase each year, and many universities and other employers have cut training and travel budgets during the past five years. This means that now many attendees must pay their own expenses. At the same time, hotel prices have steadily increased. It is now a "sellers' market," and hotel occupancy continues to run as high as 90%. This means NCFR can apply very little leverage to get lower prices. That's why NCFR has made special efforts to keep conference registration fees as low as possible.

Did you realize that NCFR has kept the same registration fees for 3 years, even though the total overall budget is increasing by 3.1% next year. Many conference costs such as postage, printing, rental of microphones, and exhibits, and food have risen by an average of 13.8%! At the same time, we have been forced to cut costs in other ways, such as eliminating the Roster of Attendees so that we can break even on the Conference.

One way we hope to keep our fees low is by organizing an active group of **Conference Sponsors**. You or your university or department or company now have the opportunity to sponsor plenary speakers, host receptions, or provide conference scholarships.

All sponsors will be prominently listed in the printed *Conference Program*, the *Program Update*, and the *NCFR Report*. All your donations are tax deductible as allowed by law.

Sponsorship is an excellent opportunity for you to help keep conference registration fees as low as possible and thereby allow many more people to attend. Use the form on this page to participate, or call **Cindy Winter, CMP**, toll free at 888-781-9331, Ext. 15 (e-mail: wintersc@ncfr.com), with any questions.

Thank you for your continued support of NCFR.
Cindy Winter CMP
Conference Coordinator

CONFERENCE SPONSORSHIP PROJECTS

You can contribute any amount toward a project. It is not necessary to donate to an entire category.

<input type="checkbox"/> Plenary Speaker Honorarium	\$1,600	<input type="checkbox"/> Hospitality Room	\$1,000
<input type="checkbox"/> Plenary Speaker Travel	\$1,000	<input type="checkbox"/> CFLE Reception	\$1,000
<input type="checkbox"/> Coffee break (beverages)	\$ 750	<input type="checkbox"/> Roster of Attendees	\$1,500
<input type="checkbox"/> Coffee break (with light pastries)	\$1,500	<input type="checkbox"/> Scholarships for Attendees (includes registration; travel; and hotel)	\$1,500
<input type="checkbox"/> Newcomers Reception	\$2,500	<input type="checkbox"/> Sound equipment rental for Plenaries & RUPS	\$2,000
<input type="checkbox"/> Mentoring Reception	\$1,000	<input type="checkbox"/> General support	
<input type="checkbox"/> Mentoring Coffee Break	\$ 500		
<input type="checkbox"/> Opening Reception	\$3,500		

I would like to help NCFR as a Conference Sponsor

Name _____
Address _____
City _____ State/Province/Country _____ Zip/Postal Code _____
Phone _____ Fax _____ E-Mail _____

_____ **Amount Enclosed.** I have checked the area(s) in which I would like to be a sponsor or contribute.

Method of payment:

☐ Check (checks payable to **National Council on Family Relations**. U.S. funds drawn on U.S. banks only.)

☐ VISA ☐ MasterCard Card Number _____ Exp. Date _____

Signature _____

Mail to NCFR Annual Conference, 3989 Central Ave. NE, Suite 550, Minneapolis, MN 55421. Toll Free: 888-781-9331. Phone: 612-781-9331; Fax: 612-781-9348; E-mail: ncfr3989@ncfr.com
Web Site: www.ncfr.com

Stay in Contact With Colleagues



The Updated Roster of 1996 Conference Attendees is now Available.

On-site registrants included. Names, addresses, phone, e-mail, employer, and NCFR Section membership of attendees.

Cost: \$4.00 (includes postage and handling)

Credit card orders available by phone or fax.

NCFR, 3989 Central Ave. NE, Suite 550, Minneapolis, MN 55421.
Toll Free: 888-781-9331
Phone: 612-781-9331
Fax: 612-781-9348

Fatherhood and Motherhood in a Diverse and Changing World

National Council on Family Relations 59th Annual Conference

Conference: Nov. 7-10, 1997
Pre-conference Workshops: Nov. 5-6, 1997

Hyatt Regency Crystal City, Arlington, VA

Program Vice President: **Ralph La Rossa**, Georgia State Univ.

Plenary Speakers

Patricia Hill Collins, Ph.D.
Univ. of Cincinnati

Martha Farrell Erickson, Ph.D.
Minnesota Children, Youth, and Families Consortium, St. Paul, MN

James Levine, Ed.D.
Families and Work Institute
New York, NY

Plus

Research Updates for Practitioners
Symposia ♦ Panels ♦ Workshops

Posters ♦ Papers

Practical Round Table discussions

Exhibits ♦ Networking ♦ Receptions

and more!

Fees

Registration: NCFR Member: \$140; Nonmember Professional: \$220;
NCFR Student Member: \$65; Nonmember Student: \$95.
Contact NCFR for other rates.

Sleeping Rooms at Hyatt:
\$110 per night plus tax.



Contact: **National Council on Family Relations**
3989 Central Ave. NE, #550, Minneapolis, MN 55421
Phone: 612-781-9331; Toll Free: 888-781-9331; Fax: 612-781-9348
E-mail: ncfr3989@ncfr.com; Web Site: www.ncfr.com

Arlington Awaits You!

We're making preparations for your visit to Arlington, VA, for NCFR's 1997 annual conference, November 5-10. Attending the event makes it easy to visit Washington, DC. After all, you're just next door.

Staying in Arlington means you're only minutes from many of the most popular attractions: the White House, U.S. Capitol building, Mount Vernon, the Smithsonian, and countless other places. Washington's National Airport is actually in Arlington.

Our great location is only the beginning: Arlington is filled with history--Arlington National Cemetery, the Pentagon, the U.S. Marine Corps Memorial Iwo Jima. Arlington also boasts nearly 400 restaurants.

Arlington County, an urban area of about 26 square miles, is both a residential community and an employment center. It was selected in 1994 by Money magazine as one of the 15 safest localities in the U.S. It also is very "green", with over 1,100 acres of parklands. In fact, Arlington is crisscrossed by more than 100 miles of jogging, hiking, and biking trails, and nationally recognized rose gardens: Bring your walking shoes!

If you like to shop, get ready for great expectations. Arlington offers world-class shopping with large, exclusive indoor shopping areas featuring such major retailers as Macy's and Nordstrom.

The Crystal City Underground houses 120 stores and provides access to Metrorail, one of the finest subway systems in the world. Also in Crystal City is the Fashion Centre at Pentagon City, featuring 150 stores. Both shopping areas are easily accessible from the conference location at the Crystal City Hyatt Regency, site of the 1997 NCFR annual conference.

We're excited about your upcoming visit to Northern Virginia, and look forward to making this conference one you'll truly remember as a favorite. Marilyn Faris Scholl CFLE Hospitality Chair 1997 NCFR annual conference 703-358-7216

Meeting

June 11-13, 1997: Boys Town's 1997 Annual Professional Child Care Conference, "Integrated Behavioral Health Care: A Complete Continuum." Contact: National Resource and Training Center, Boys Town Center, 14100 Crawford Street, Boys Town, NE 68010.

HAVE YOU WRITTEN A NEW BOOK? DON'T BE SHY - SHARE IT WITH YOUR COLLEAGUES

Take Advantage of the NCFR Annual Conference Exhibits to Market Your Book!

Conference attendees are professionals who are always looking for new materials. "The exhibits are one of the major reasons I attend the NCFR conference," say many attendees. Why not have a copy of your book included in the exhibit? It's a great marketing venue.

Contact your publisher and request to have your book displayed at NCFR - or encourage him/her to reserve an exhibit booth. Return this form to the NCFR office by September 1, 1997, and NCFR will send exhibit information to your publisher representative.

Book Title _____

Author(s) _____

Date of Publication _____

Publisher _____

Representative to Contact _____

Have you already spoken to your Rep? ☐ yes ☐ no

Address _____

City _____ State/Province _____

Zip/Postal Code _____

Phone _____ Fax _____

E-mail _____

Your Name _____

Phone _____ Fax _____

E-mail _____

Mail or Fax this form to NCFR Annual Conference by September 1, 1997, 3989 Central Ave. NE, Suite #550, Minneapolis, MN 55421. Phone: 612-781-9331, Ext. 15 • Toll Free: 888-781-9331 • Fax: 612-781-9348
E-mail: wintersc@ncfr.com • Web Site: www.ncfr.com

Future NCFR Conference Dates

- 1997 - November 5-10
Hyatt Regency Crystal City
(Washington DC)
Ralph LaRossa, GA State Univ.
Program Vice-president
- 1998 - November 12-17
Hyatt Regency Milwaukee, WI
- 1999 - November 9-14
Hyatt Regency Irvine
(Los Angeles, CA)
- 2000 - November 7-13
Minneapolis (MN) Hilton & Towers

Meetings

July 9-12, 1998: Head Start's Fourth National Research Conference, "A Research Agenda for Children and Families in an Era of Rapid Change." Washington, DC. Contact: Dr. Faith Lamb Parker, Project Director, Columbia Sch. of Public Health, CPFH, 60 Haven Ave., B3, New York, NY 10032; (212) 304-5251, fax: (212) 544-1911.

July 5-9, 1998: The 28th ICSW International Conference of Social Welfare, "Promoting Human Well-Being: Addressing the Forces Shaping Society," International Congress Center, Jerusalem, Israel. Contact: ICSW Conference Secretariat, POB 50006, Tel Aviv 61500, Israel; fax: 972 3 5175674 or 972 3 5140077; tel: 972 3 5140000.

ASSIST AT THE NCFR CONFERENCE AND HAVE YOUR REGISTRATION REFUNDED!

Students have a unique opportunity to gain hands-on experience about running the NCFR Annual Conference. Those who work eight hours will qualify to receive a refund of the registration fee. (Checks are mailed two weeks after the Conference). **PRIORITY IS GIVEN TO NCFR STUDENT MEMBERS.** Jobs will be assigned on a first-come, first-placed basis. Accommodations for physical limitations will be made whenever possible. The number of positions is limited.

You will receive notification as to the status, position, and scheduled times you are to work by **October 1, 1997**. You must return the **acknowledgment form** to Suzanne Randolph by **October 10**. If you do not return the form, your name will be removed from the list, and the assignment will be given to another student.

What are the Responsibilities of a Student Assistant?

- Check in at the Student Assistance desk approximately 20 minutes before your assigned work time.
- Be at your assigned position 15 minutes early.
- Be willing to do any tasks necessary for the smooth operation of your assigned project and the conference as a whole. (Note: Some positions may include moving boxes and audio-visual equipment.)
- Acquaint yourself with the conference program BEFORE coming to the conference so that you are able to answer questions.
- Turn in your signed work form to the Student Assistance desk by Monday noon, Nov. 10 to receive your refund.

STUDENT ASSISTANTS FORM DEADLINE: SEPTEMBER 1, 1997

Name _____

School _____

Address _____

City _____ State/Province _____

Zip/Postal Code _____

Phone: Day (____) _____ Night (____) _____

Please check the areas in which you are willing to work:

☐ Registration ☐ Employment matching service ☐ Special events set-up

☐ Local information ☐ Workshop registration ☐ Exhibits

☐ Liaison for emergencies, AV set-up, door monitors (need access to a car)

☐ No preference

Please rank your preferred **TIMES** (1 is top priority). Place an **X** by the times when you are **UNABLE** to work because of other commitments. A total of 8 hours is required; you must work a minimum of 4 hours at a time. We will attempt to place you in your preferred times, but it may be necessary to place you at other times.

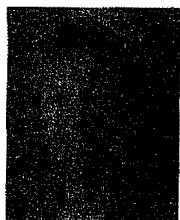
Wed., Nov. 5	<input type="checkbox"/> morning	<input type="checkbox"/> afternoon	<input type="checkbox"/> evening
Thur., Nov. 6	<input type="checkbox"/> morning	<input type="checkbox"/> afternoon	<input type="checkbox"/> evening
Fri., Nov. 7	<input type="checkbox"/> morning	<input type="checkbox"/> afternoon	<input type="checkbox"/> evening
Sat., Nov. 8	<input type="checkbox"/> morning	<input type="checkbox"/> afternoon	<input type="checkbox"/> evening
Sun., Nov. 9	<input type="checkbox"/> morning	<input type="checkbox"/> afternoon	<input type="checkbox"/> evening
Mon., Nov. 10	<input type="checkbox"/> morning	<input type="checkbox"/> afternoon	

Return the completed form by **September 1, 1997** to: Suzanne Randolph, Family Studies, Univ of Maryland, College Park, MD 22015. Phone: 301-405-4012.
E-mail: SR22@UMAIL.UMD.EDU

Elections from Page 1

Chair; Public Relations Committee; Secretary, Research and Theory Section; Vice-chair, Family Action Section; Chair, Social Policy Committee; Task Force on Aging; Membership Committee. 4) Groves Conference on Marriage and the Family, Life Member, President, Conference Chair; American Sociological Association, Fellow, International Sociological Association, Committee for Family Research, President, Conference Chair; Family Science Association, Secretary/Treasurer; American Association for Family and Consumer Sciences, Delaware President, Section Chair, 75th Anniversary Leadership Award; American Association of University Professors, National Council, Local Chapter President. 5) Inclusiveness, diversity and quick response to family issues are important priorities to building a stronger NCFR. NCFR has nurtured interdisciplinary and family science interchange and has been successful in responding to the changing needs of the professionals and families. My leadership would be to enlarge our vision for the future of the organization and to pursue our responsibilities to represent best practice and findings to the academic and policy arenas at local, national, and international levels. Careful planning and evaluation of our projects will allow us to be even more responsive to members and the larger community of family programs.

Program Vice-president-elect



Allen



Gershenfeld

Katherine R. Allen, Ph.D., CFLE

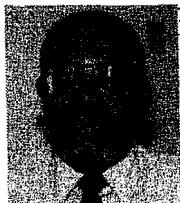
1) Professor, Family and Child Development, VA Polytechnic Institute and State University. 2) Associate Professor, Family Sciences, TX Woman's University. 3) Board of Directors; Nominating and Action for Diversity Committees; Feminism and Family Studies Section Chair, Vice Chair, Newsletter Editor, Student Award Chair; Qualitative Family Research Network Co-chair and Treasurer; Reuben Hill Award Committee; Deputy Editor, *Journal of Marriage and the Family*; Editorial Board, *Family Relations*; NCFR Student/New Professional Representative; 1984 NCFR Student of the Year Award; TX Council on Family Relations Program Vice-president, Secretary, Student Award Chair; member, Ethnic Minorities, Family Policy, Feminism and Family Studies, Research and Theory Sections. 4) Family Science Association; Gerontological Society of America; International Network on Personal Relationships; International Society for the Study of Personal Relationships; National Women's Studies Association. 5) Family practitioners are well-aware of the differences dividing us as individuals and scholars. I envision an Annual Conference in which we move beyond cataloging difference and toward utilizing empirical knowledge and personal experience to invigorate family studies. This can be accomplished by combining critical analysis and reflexive

understanding about the families in which we live and those we seek to understand, celebrate, and change. If elected, I would work to coordinate our expertise in bringing together multicultural and multidisciplinary groups across pedagogical, methodological, and theoretical borders to generate new ideas and strategies for a respectful intellectual community about families.

Matti Gershenfeld, Ed.D.

1) President, Couples Learning Center; Adjunct Professor Graduate School, Temple University. 2) See above. 3) Past Board of Directors; Chair, Local Arrangements 50th Anniversary; Chair, 40th Anniversary; President, Association of Affiliated Councils; President, PA Council; Founding Chair, Midlife Focus Group; Program Committee, Annual Conference; Program Chair, Education and Enrichment Section; Membership Committee; Presenter at more than 15 conferences. 4) American Psychological Association: Fellow; Chair, Continuing Education Division 35 (Women); Pennsylvania Psychological Association: Fellow; Chair, Continuing Education; Chair, Blue Ribbon Continuing Education Future Committee; International Council of Psychologists: Ambassador; Chair, Continuing Education Committee; American Association of Marriage and Family Therapists: Fellow; International Interdisciplinary Conference on Women: Co-chaired first conference; Executive Committee. 5) I think being Program Chair is the most exciting job in NCFR; I'd like to do it building on the goals enunciated. These might be keynoters and also "perspective" panels with participants from different disciplines and different cultures. Other ideas include: advance conference "publicity" via a provocative topic on talk shows (have appeared frequently, know people); rise to the challenge of educating the new Congress with a partner, at a meeting in Washington (separate funding); expand networking activities; have a "Hyde Park Corner" (with popcorn) to hear "outrageous" marriage and family ideas--for fun and to include "other types."

Secretary



Baptiste



Benson

David A. Baptiste, Ph.D.

1) Senior Therapist, River's Bend RTC, Las Cruces, NM, and Private Practice. 2) Associate Director, Southwest Counseling Center, Las Cruces, NM. 3) Membership Committee; Vice Chair, Family Therapy Section; Ethnic Minorities Board representative before Section status; Affiliated Councils, Nominating Committee; Regional Representative, Region VI; President, NCMFR; *Family Relations*, Editorial Board. 4) AAMFT; APA; ACA; Groves Conference on Marriage and the Family. 5) Currently a major concern for NCFR is how to retain its members, especially those who joined as students. As a current member of the Membership Committee, I am aware of the need for and efforts to recruit new members and to retain current ones, especially ethnic minority members. I endorse and support these efforts but also am acutely aware of the need to improve the quality of the organizational experiences for current

members. Accordingly, if elected I will work to improve the quality of the organizational experiences for current members, e.g., increased opportunities for members to participate in the organization.

Mark J. Benson, Ph.D.

1) Associate Professor, Department of Family and Child Development, VA Tech. 2) Child and Family Therapist, University Hospitals, University of MN, Minneapolis. 3) Parent Education Focus Group Co-Chair; Lifespan Development Focus Group Chair; Individual/Family Conference Proposal Committee, Chair. 4) Society for Research in Child Development; Society for Research on Adolescence; American Psychological Association. 5) Diversity is the unique strength of NCFR. Effective communication within NCFR can improve lives of families by drawing from its diversity of disciplines, professions, and individuals. The secretary is a pivotal role in communicating information, promoting interaction, and fostering participation. As secretary, I will refine record keeping and communication systems to broaden participation and decision making. I will aim to foster exchange among mentors, students, new professionals, instructors, therapists, researchers, and family life educators. Some specific means for fostering exchange include: extending presentation formats, expanding awards for NCFR members, providing opportunities for students, and promoting collaboration among the sections.

Treasurer



Gilbert



Meredith

Kathleen Gilbert, Ph.D.

1) Associate Professor of Applied Health Science, IN University, Bloomington. 2) Assistant Professor of Applied Health Science, IN University, Bloomington. 3) Chair, Families and Grief Focus Group; Chair, Family Science Section Publications Committee; Chair, Family Science Section; IN Council on Family Relations President; Member, Board of Directors; Secretary. 4) Association for Death Education and Counseling, Family Science Association. 5) I believe the Treasurer of NCFR must work to maintain the financial security of this organization while also being responsive to the needs of the membership. Sound financial management is important to our continued existence and the Treasurer must maintain a positive working relationship with the Board and its committees, central office, and the membership of NCFR to facilitate this. Members of NCFR need to be kept abreast of the financial status of our organization and their input of budgetary matters is important. I believe I have the necessary skills to perform the responsibilities of this position.

Bill Meredith, Ph.D., CFLE

1) Associate Dean, College of Human Resources and Family Sciences,

50 YEARS



Summer Institute
in Survey Research Techniques

PRESENTS A COURSE IN
EVENT HISTORY ANALYSIS

June 9-20, 1997

at the

Institute for Social Research • University of Michigan
Instructed by Jay Teachman, Washington State University

The emphasis of this course is on "regression-like" or hazard-rate models, in which the rate of an event occurring varies according to a set of explanatory variables. Topics will include data structure, life tables, censoring, discrete-time methods, parametric and nonparametric models, time varying covariates, and unobserved heterogeneity.

For more information on this and other courses and workshops contact:

Dr. James M. Lepkowski, Director
Summer Institute, Survey Research Center
Institute for Social Research, University of Michigan
P.O. Box 1248, Ann Arbor, MI 48106-1248
Telephone: (313) 764-6595
Fax: (313) 764-8263
Email: summers@isr.umich.edu
Website: <http://www.isr.umich.edu/src/si/>

Professor of Family and Consumer Sciences, University of NE. 2) Interim Dean, College of Human Resources and Family Sciences, University of NE. 3) NCFR Membership Vice-president; Board of Directors; Chair, Family Science Section; Chair, CFLE Certification Committee; CFLE Program Review Committee; Membership Committee; Mentoring committee. 4) American Association of Family and Consumer Sciences; National Association of Social Workers; American Association of Higher Education. 5) As Treasurer I wish to work at stabilizing expenses while increasing revenues for NCFR. I would particularly like to target improved revenues from increased membership and from the CFLE program. I would also plan to implement the recommendations of the Long Range Planning Committee to ensure the financial future of NCFR. As Treasurer I would actively monitor operational finances as well as investments and review policies and procedures to increase efficiency. I have had considerable experience working with and monitoring budgets during five years as a department chair of a large department and as an interim dean. I have also been responsible for nearly five million dollars in grants and contracts.

Fellowship Committee



Acock



Bengston



Bradbard



Cunningham



Grotevant



Laner



Lewis



Rubin

Alan C. Acock, Ph.D.

1) Professor and Chair of the Department of Human Development and Family Sciences, OR State University. 2) Professor of Sociology, Rural Sociology, and Director of the Center for Life Course Policy, LA State University. 3) Chair, Theory and Research Methodology Workshop; member of the Task Force on the Future of Electronic Publishing; member of the Feminism and Family Studies Section; and member of the Research and Theory Section. 4) NCFR, American Sociological Association. 5) I want to get the Fellowship Committee off to a good start. Being on a committee for fellowships is an important responsibility and involves being fair to the diversity of backgrounds in NCFR. It would be an honor to serve in this capacity.

Vern L. Bengston, Ph.D.

1) Director, Social and Behavioral Sciences Division, GRI AARP/University Professor of Gerontology, University of Southern CA; Professor of Sociology. 2) Director, Gerontology Research Institute, University of Southern CA. 3) Reuben Hill Award, 1982 and 1988; NCFR monographs, editorial board; Research and Theory Section member. 4) American Sociological Association, chair of section on Aging; Gerontological Society of America, president, Behavioral and Social Sciences Section chair; American Psychological Association, Division 20, Adult Development and Aging, member of Council. 5) As we approach the end of the century, NCFR faces a paradox. Perhaps never before have so many politicians and pundits bemoaned the "decline of the family," at the same time. Perhaps never before has so much research demonstrated how important families are to individuals' well-being. NCFR needs assertive leadership in order to get this message out beyond the halls of academe. NCFR needs to grow in membership in order to increase its influence. NCFR needs to take a more assertive stance in promoting both basic research and policy applications regarding families.

Marilyn Bradbard, Ph.D.

1) Professor and Head, Department of Human Development and Family Studies (formerly Family and Child Development), Auburn University, Auburn, AL. 2) Associate Professor, Family and Child Development, Auburn University, Auburn, AL. 3) NCFR Member; Reviewer Conference Program; Ad hoc Reviewer, **Family Relations**; Member, Conference Local Arrangements Committee and Co-chair, Hospitality Committee; Program Committee and Affiliated Councils Program Chair; Chair, AL Council on Family Relations Research Committee. 4) International Society for the Study of Personal Relationships; Society for Research in Child Development; National Association for the Education of Young Children; Co-editor, **Family Science Review**. 5) NCFR has a rich history of welcoming under its auspices a wide range of family professionals—researchers, teachers, practitioners, and social policy makers. In my view, this openness to such diverse world views on family scholarship is one of NCFR's most admirable features. As a member of the Fellowship Committee I would have the unique opportunity of reviewing applications and honoring individuals who have had the greatest long-term impact on our field. My goal would be to review carefully those applicants and to identify those who have distinguished themselves across a wide range of NCFR's sections and missions.

Jo Lynn Cunningham, Ph.D.

1) Professor of Child and Family Studies, The University of TN, Knoxville. 2) Assistant Professor, College of Human Ecology, MI State University. 3) Chair, Nominating Committee; Employment Services Committee; Secretary, Religion and Family Life Section; Research and Theory Section Nominating Committee; Reuben Hill Award Committee; President, Secretary, TN Council. 4) American Association of Family and Consumer Sciences; Groves Conference on Marriage and the Family, Board of Directors; National Association for the Education of Young Children; Society for Human Ecology, Board of Directors;

World Future Society. 5) NCFR is an important resource for enhancing the professional development of its members, the profession as a whole, and the contributions of the profession to the larger society. Identifying ways for achieving this potential at all three of these levels is an important task for the organization. Implementing the new fellowship program provides a means of honoring past contributions by members from the diverse areas represented in the organization, of giving present recognition for these outstanding accomplishments, and of denoting a special group of professionals who represent a unique resource for enhancing the work of NCFR in the future.

Harold D. Grotevant, Ph.D.

1) Professor of Family Social Science, University of MN. 2) Professor of Human Ecology (Child Development and Family Relationships) and Psychology, University of TX at Austin. 3) Chair, Adoption Focus Group; Program Chair, Texas Council on Family Relations; ad hoc reviewer, **JMF** and **Family Relations**. 4) Society for Research in Child Development, Society for Research on Adolescence, American Psychological Association, International Society for the Study of Behavior Development, International Society for the Study of Personal Relationships. 5) The recently-developed Fellows program for NCFR will provide an opportunity to recognize the expertise and excellence of members who have made outstanding contributions to the family field. I would be pleased to work with this committee as it gets established so that it is successfully launched. As a Fellow of APA, I would bring my experience with how the process works in other professional organizations.

Mary Riege Laner, Ph.D.

1) Professor of Sociology and Women's Studies, AZ State University. 2) Associate Professor, AZ State University. 3) NCFR member; conference presenter. 4) Pacific Sociological Association, member, Vice-president, Secretary-Treasurer; Associate Editor, **Family Relations**; Associate Editor, **Deviant Behavior: An Interdisciplinary Journal**. 5) Reviewing and acting on applications for honorary fellow status in the NCFR is a very important task, as is recommending persons for honorary fellow status to the Board for their final approval. Those whom we choose are (and will be even more) highly visible persons in the academic and larger communities. We must be certain that those we recommend are chosen with special attention to equal opportunity guidelines.

Edith A. Lewis, Ph.D.

1) Associate Professor of Social Work and Women's Studies, University of MI. 2) Assistant Professor of Social Work. 3) Ethnic Minorities Section: Chair, Chair-elect, Secretary/Treasurer; Feminism and Family Studies Section: Nominations Committee; Action for Diversity Committee; Research and Theory Section member; MI Affiliated Council Board of Directors; Affiliated Councils, Future Conferences Task Forces; NCFR Nominating Committee. 4) Groves Conference on Marriage and the Family; Council on Social Work Education (Commission on the Status of Women); Center for Social Policy Studies, University of Ghana; Editorial Boards, **Family Issues**, **Michigan Family Relations Journal**, **Research in Clinical Social Work Practice**. 5) I believe that my long-term membership

and involvement in NCFR enhance my ability to serve with distinction in this new organizational initiative. I am committed to the recognition of national and international scholars from all disciplines that contribute to research and scholarship on families. This exciting new award will, in my opinion, enhance the visibility of the organization as well as reward outstanding scholars for their accomplishments.

Patrick D. McKenry, Ph. D., CFLE

1) Professor, Department of Family Relations and Human Development and Department of Black Studies, The OH State University. 2) Visiting Professor, Department of Maternal and Child Health, University of NC-Chapel Hill. 3) Chair, Family Life Certification Committee; Editorial Board, **Family Relations**; Program Committee, NCFR Annual Conference; Finance Committee; Chair, Media Awards Committee. 4) American Sociological Association, Groves Conference on Marriage and the Family. 5) In the granting of "fellow" status, a broad definition of contributions to the field should be considered and clearly stated criteria employed to ensure a fair and systematic selection process. Standards for "fellow" status should reflect outstanding and sustained contributions so that the title is seen as a prestigious award.

Roger Rubin, Ph.D.

1) Associate Professor of Family Studies and Director, Family Research Center, University of MD-College Park. 2) Assistant Professor, Child Development and Family Relations, University of TN. 3) Secretary/Treasurer of Association of Councils; Public Policy Vice-president; Chair, Public Policy Committee; Board of Directors; Publications Committee; Chair, Task Force on Income Maintenance; Membership Committee; Founding member, Family Action Section; Regional Planning Commission; Associate Editor, **Family Relations**; Local Planning Committee; Program Committee; Student Award Committee; President, Treasurer, Program Committee and Nominating Committee of DC Metropolitan Area Council on Family Relations. 4) President, Board member, Secretary, Associate Program Chair, Finance Committee, Program Committee, Groves Conference on Marriage and the Family; Public member, Commission on Supervision, American Association for Marriage and Family Therapy. 5) I have been an active participant and office holder in NCFR for over 25 years. I would bring my experience to the newly formed NCFR Fellowship Committee. My commitment to issues of diversity, family life education, and public policy would be reflected in my contributions and decisions as the committee formulates its agenda.

continued on Page 18

DEADLINE

for the
next REPORT
May 15, 1997

Student New/Professional Representative-elect to the Board



Hughes



Kimberly

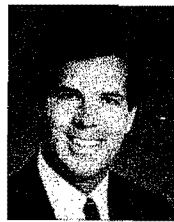
Debra K. Hughes, Ph.D., CFLE

1) Assistant Professor of Family Studies and Social Work, Miami University, Oxford, OH. 2) Project Administrator, Development of Commitment in Heterosexual Relationships, National Institutes of Mental Health Grant, Principal Investigator, Dr. Catherine Surra. 3) Student/New Professional Representative, Research and Theory Section; Member Research and Theory Section; Participant in S/NP Roundtables; Annual Conference Presenter; Faculty Advisor for Miami University Council on Family Relations, University Affiliate; Presenter at OH Council on Family Relations Annual Conference. 4) American Association of University Women; American Psychological Association; International Society for the Study of Personal Relationships; International Network on Personal Relationships; Ohio Council on Family Relations. 5) I would begin my service with a survey of S/NP's needs and interests. I propose four major goals: a) development of incentives for increasing S/NP involvement in research, teaching, clinical, and policy representation; b) propose a S/NP newsletter that features articles on bridging academic and professional development; c) implement a formal mentorship program between students and professionals, initiated at the Annual Conference, and accompanied by a formal session addressing issues like research, publishing, and survival in academic or other professional environments; and d) explore a move toward separate sections for students and new professionals.

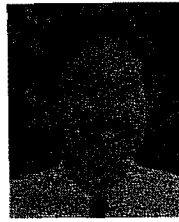
Judy A. Kimberly, Ph.D., CFLE

1) Program Evaluation Administrator, OH Department of Mental Health; Adjunct Assistant Professor of Family Relations and Human Development, The OH State University. 3) CFLE; Sections: Feminism and Family Studies, Family Health; Affiliated Councils: TX Council, OH Council. 4) OH Program Evaluators Group; Midwest Research Association. 5) As the Student/New Professional Representative to the Board of NCFR I would focus my energies in four areas: a) enhancing professional development through the expansion of current conference sessions, networking opportunities, and mentoring programs; b) organizing discussions of extramural funding opportunities via pre-conference workshops, skills exchanges, and internet communications; c) expanding the opportunities for involvement within NCFR for current S/NP members while seeking new S/NP members; and d) augmenting communication between students and new professionals, as well as S/NPs and the NCFR Board. In short, broadening the perspectives of students and new professionals through empowerment with information and opportunities to serve will be my goals as the S/NP Representative.

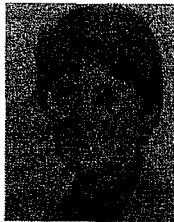
National Nominating Committee



Bower



Daly



Elliott



Henry



Jurich



Murray



Pleck



Prater



Stith



Thompson



Wood

Donald W. Bower, Ph.D.

1) Leader - Resource Management & Human Development Cooperative Extension Service, The University of GA. 2) Human Development Specialist, Cooperative Extension Service, The University of GA. 3) Member; Association of Councils: Board of Directors; Southeastern Council: President, Annual Meeting Chairman, Treasurer; Georgia Council: President. 4) American Association of Family & Consumer Sciences; Council of Administrators of Family & Consumer Sciences; National Association for the Education of Young Children; National Council on Aging; Sexuality Information & Education Council of the U.S. 5) I believe it is important for the members of the Nominating Committee to represent a broad spectrum of the membership, from perspectives of content, practice focus, geographical region, and related considerations. In order for all NCFR members to develop commitment to the organization, they need to have the opportunity to serve the organization in various leadership roles.

Kerry Daly, Ph.D.

1) Associate Professor, Department of Family Studies, University of Guelph, Canada. 2) -- 3) Research and Theory,

Family Policy Sections member; Membership Committee; Qualitative Family Research Network member, Steering Committee; Adoption Focus Group Chair; Canadian Professionals Network, president. 4) Canadian Sociology and Anthropology Association (CSAA), American Sociology Association (ASA), Adoption Council of Canada (ACC), North American Council on Adoptable Children (NACAC). 5) I am committed to working on strategies to develop NCFR membership and support efforts to broaden the international scope of the organization.

Barbara A. Elliott, Ph.D.

1) Associate Professor, Department of Family Medicine and Director, Clinical Research; School of Medicine, University of MN-Duluth. 2) Director of Behavioral Science Research; Duluth Family Practice Residency Program. 3) Board of Directors; Conference Program Planning Committee; Chair, Family and Health Section; Chair, National Program Advisory Committee; Editor, **Families and Health Care** (Vision 2010 series); Chair, Health Forum, International Year of the Family; Photographic Exhibit "Many Faces of Absolute Poverty" at 1991 conference; Newsletter Editor, Family and Health Section; International Year of the Family Program Planning Committee; Member of Sections: Family and Health, International, Research and Theory, Religion and Family Life, Public Policy; Member: MN Council on Family Relations; Multiple presentations in symposia, paper, and poster sessions. 4) Society of Teachers of Family Medicine; North American Primary Care Research Group; International Red Cross; Social Science and Medicine. 5) NCFR is the premier professional organization addressing families and children. To a large extent, its future strength will depend on its leadership. If selected, I will work to see that nominated officers include members who are willing to commit their time, skills and energy to help bring NCFR into the future and who represent the diversity (in disciplines, professional interests, race and ethnicity, and gender) that make up NCFR.

Carolyn S. Henry, Ph.D., CFLE

1) Interim Head and Associate Professor, Dept. of Family Relations and Child Development, OK State University. 2) Assistant Professor, Dept. of Family Relations and Child Development, OK State University. 3) Association of Councils Program-chair; Co-chair, Rural Families Focus Group; Editorial Board, Family Relations; OK Council on Family Relations, President, Treasurer, Awards Committee; TN Council on Family Relations, Treasurer. 4) American Association for Marriage and Family Therapy, Clinical Member; Society for Research on Adolescence, American Association of Family and Consumer Sciences. 5) As a member of the National Nominating Committee, I would assure a broad and diverse representation of the NCFR membership and constituent groups among the candidates for offices. Such diversity would include members with primary interests in theory, research, and practice (including family life education and family therapy); the range of NCFR Sections and Focus Groups; and demographic variation among members (ethnicity, gender, age, stage in professional career, and geography). Such representation among candidates can enhance the ability of NCFR to address family issues among professionals in a variety of settings.

Joan A. Jurich, Ph.D.

1) Associate Professor of Family Studies, Purdue University. 3) NCFR Secretary; Osborne Award Recipient; Chair, Sexuality Focus Group; NCFR Representative to the National Coalition for Human Sexuality; Young Professionals Representative, Research and Theory Section; Member, Feminism and Family Studies, Education and Enrichment, Family and Health Sections; Osborne Award Committee; Outstanding Student Award Committee; Editorial Board, **Journal of Marriage and the Family**; Reviewer, **Family Relations**; President, Board of Directors, Newsletter Editor, IN Affiliated Council. 4) American Association of Sex Educators, Counselors, and Therapists; International Network on Personal Relationships; North Central Sociological Association; Society for Research on Adolescents. 5) To foster the continued growth of NCFR I believe the Board needs leaders with both vision and the ability to make that vision a reality. Further, although one of NCFR's greatest strengths is its diversity I believe its leaders must strive to cultivate and integrate its diverse features more fully. Therefore, I would seek nominees who: a) are forward-thinking and creative; b) recognize the unique contributions of and foster synergism among practice, research, and theory; c) value and would maximize the participation of all sections in organizational activities; and d) are committed to increasing the multicultural representation on the Board and in the membership.

Colleen I. Murray, Ph.D.

1) Associate Professor, Department of Human Development and Family Studies, and the Interdisciplinary Doctoral Program in Social Psychology, University of NV, Reno. 2) Visiting Assistant Professor, School of Family Ecology, University of Akron. 3) Member; Reuben Hill Award Committee Reviewer for **Journal of Marriage and the Family**; Research Paper and Proposal Awards Committee, Feminism and Family Studies Section; Vice-chair and Secretary/Treasurer, Family Science Section; Chair, Sexuality Focus Group; Member of Research and Theory, Family and Health, Education and Enrichment, International, Family Science, and Feminism and Family Studies Sections; Member-at-large, OH Council on Family Relations. 4) Society for Research on Adolescence; Association for Death Education and Counseling; Groves Conference on Marriage and the Family; Society for the Scientific Study of Sexuality; International Society for the Study of Personal Relationships. 5) If elected to the Nominating Committee, my major goal would be to identify a slate of candidates who reflect the many areas of diversity present in NCFR; who have commitment, energy and vision to devote to the organization; and who are committed to facilitating NCFR ties to diverse national and international organizations which also address issues of families and their members. It is through the efforts of these individuals that we can encourage continued growth and vitality of NCFR, as well as enhance understanding and well-being of families from a more inclusive international perspective. In addition I would encourage identification and elimination of subtle barriers which may be discouraging other competent members from becoming more active in NCFR.

Joseph H. Pleck, Ph.D.

1) Professor of Human Development and Family Studies, Department of Human and Community Development, University of IL at Urbana-Champaign. 2) Senior Research Associate, Center for Research on Women, Wellesley College. 3) Research and Theory Section, Men in Families Focus Group. 4) American Psychological Association, Society for Research on Child Development, Society for Research on Adolescence. 5) NCFR in recent years has been a vigorous and flexible organization, and I'd like to see it continue in that direction. I would work to see that candidates for NCFR offices and committees represent the breadth and diversity of our field.

Loretta Pinkard Prater, Ph.D.

1) Associate Professor of Human Ecology and Director of Special Programs, College of Education and Applied Professional Studies, University of TN at Chattanooga. 2) Central Administrative Staff of Chattanooga Public Schools, Director of the Drug Free Schools Program. 3) Panel moderator for a session of Southeastern Council on Family Relations; Discussant for NCFR session in Portland, OR; Session presider for NCFR meeting in Philadelphia, PA; Session presenter at NCFR meeting in Atlanta, GA; Reviewer of proposals for NCFR session; Member of sections dealing with ethnic minorities, education, and women's issues. 4) American Association of Family and Consumer Sciences, National Association for the Education of the Young Child, National Institute for the Development of the Black Child, National Education Association, Chattanooga Association of Professionals in Family and Consumer Sciences. 5) I feel that NCFR is an organization focused on quality leadership in our profession. To ensure that this occurs, we must continue to utilize the talents of dynamic persons with vision and a commitment to improving conditions for individuals and families. Because we compete with other organizations for members, it is also vital that our leaders employ creative strategies to recruit and retain members. I would like to be a part of the process to facilitate our reaching these goals.

Sandra Stith, Ph.D.

1) Associate Professor and Director of the Marriage and Family Therapy program, Department of Family and Child Development, VA Tech, Falls Church, VA. 2) Assistant Professor, Department of Family and Child Development, VA Tech. 3) Member; Associate Editor, **Family Relations**; Family Therapy Section Secretary/Treasurer, Nominating Committee Chair; Feminism and Family Studies Section Chair of Mentoring Committee; Qualitative Family Research Network Secretary/Treasurer; Local Arrangements Committee Member. 4) American Association for Marriage and Family Therapy; Member, Commission on Accreditation for Family Therapy Education. 5) NCFR has been one of my two primary professional homes for over ten years. I very much appreciate the opportunities for professional and personal development which I have received from the organization. The future leadership of the organization is, to a great extent, in the hands of the Nominating Committee. I see this as an important responsibility and am committed to assisting in the development of a slate of competent, committed individuals who represent diverse interests within the organization.

Aaron Thompson, Ph.D., CFLE

1) Assistant Professor, Human Development and Family Studies, University of MO-Columbia. 2) Assistant Professor, Sociology, Eastern KY University. 3) Membership Chair, Ethnic Minorities Section; Task Force on Diversity; Member, Reuben Hill Award Committee; Reviewer, **Family Relations** and **Journal of Marriage and the Family**. 4) American Sociological Association; Society for Applied Sociology. 5) To consistently promote the best candidate for the job NCFR needs done, but always keeping in mind that NCFR is a diverse organization that needs representation in leadership positions that shows that diversity.

Britton Wood, Ph.D., CFLE, LMFT

1) Marriage and Family Consultant, Britton Wood and Associates. 2) Family and Single Adult Minister. 3) President, Association of Councils, Local Arrangements Chair, CFLE Task Force, Continuing Education Committee, Fund Development Chair, Pre-conference Workshop presenter, Roundtable presenter, Membership Committee, Distinguished Service to Families Award Committee, contributor, **Family Relations**; TX Council President, Program Chair, Fund Development Chair, Board Member, Pre-conference presenter and keynote speaker at annual conference, recipient of Moore-Bowman Award for outstanding work in Texas in Marriage and Family Work. 4) Currently Co-President, Association for Couples in Marriage Enrichment; certified marriage enrichment leader (with spouse), Texas A.C.M.E. Co-President, Training Chair, Hope for Home Program of Texas Baptist Christian Life Commission, Designer and Coordinator of International Marriage Enrichment Conference, May 1996. 5) As a practitioner who appreciates reliable research, I want to see NCFR provide a positive tension between research and practical application of that research. NCFR has the unique role in the family field to keep the bridge between the two open and full of traffic going both ways. The practitioners need the researchers and the reverse is true as well. The Board representation needs to reflect the diversity of interests of the membership. I want to help facilitate that process.

Family Policy Section Chair



Koepke



Solheim

Leslie A. Koepke, Ph.D.

1) Professor, Family Studies and Department Chair, Human Development, Family Living and Community Educational Services, University of WI-Stout, Menomonie. 2) Project Director, Florida V-TECS, Tallahassee. 3) Vice-chair, Secretary of Family Policy Section; Regular Presider, Discussant, Paper Reviewer for Family Policy Section; Co-chair, Work/Family Focus Group; MN Council on Family Relations; Round table Chair, Annual Conference. 4) Groves Conference on Marriage and the Family; Co-chair of 1995 Groves Conference; National Association for the Education of Young Children. 5) The Family Policy Section serves several purposes: to provide discussion about what constitutes family

policy; to educate others (students, colleagues, policy makers) about how family policy can be developed, implemented and evaluated to strengthen family well being; and to provide a forum for family policy researchers to develop family policy theory and research methodologies. As Section Chair I would support these purposes through: working with Section Chairs to sponsor joint forums for discussion on family policy; dissemination of information on policy development and evaluation via curricula, pre-conferences, and focus groups; and through development of family policy theory and research methods.

Catherine Solheim, Ph.D.

1) Associate Professor, Department of Family and Child Development, Auburn University. 2) MN Extension Service, Lake County Director. 3) Member; Membership Long Range Planning Committee; Student/New Professional Representative; Member International Section, Student/New Professional Representative; Member Family Policy Section; Member, Research and Theory Section and Feminism and Family Studies Section; Member Southeastern Council on Family Relations, Newsletter Editor. 4) Society for the Psychological Study of Social Issues, American Association of Family and Consumer Sciences, International Federation for Home Economics, American Council on Consumer Interests, Kappa Omicron Nu. 5) The Family Policy Section of NCFR is growing and enthusiastic. I am especially impressed by the large number of students and new professionals who are interested in policy issues related to the family. To capture that enthusiasm, I would continue to build on the Section's current goals such as implementing the Student Policy Internship and continuing the excellent pre-conference policy skills workshop. I would also seek ways to actively involve Section members in projects that would bring a family perspective to the policy making process. Working closely with the NCFR Public Policy Vice-president and our NCFR representatives in Washington and the United Nations, I would encourage members to collaboratively write white papers on policy issues and publish them on the NCFR web site, increasing the organization's visibility as a resource for decision-makers and practitioners.

Family Policy Section Vice-chair



Bowers

Susan Bowers, Ph.D.

1) Assistant Professor, School of Family, Consumer, and Nutrition Sciences, Northern IL University, DeKalb. 2) Graduate Student, College of Human Ecology, The OH State University, Columbus. 3) Board Member, IL Council on Family Relations, present; Member, IL Council on Family Relations Public Policy Committee, present; Chair, Employment Service at NCFR Conference, Minneapolis; Member, NCFR Men in Families Pre-conference Planning Committee; Student Representative, OH Council on Family Relations; Member, Family Policy, Research and Theory, Family Science, Feminism Sections. 4)

Public Policy Committee, IL Association for the Education of Young Children; Gerontological Society of America; American Psychological Association. 5) As Vice-chair for the Policy section, I would focus on supporting activities between the section and the several new programs which the policy section has in the works. These programs, such as the new policy internship for students, offer an opportunity to increase the visibility of the section within NCFR. In addition, as Vice-chair, I would assist the Chair in maintaining/increasing section membership, creating liaisons between Public Policy and other sections of NCFR, and recognizing diversity in thought and practice throughout the conference program and section activities.

Lisa Hutchens, Ph.D.

1) Assistant Professor, Child and Family Studies, Northern IL University. 2) Graduate Student, University of GA. 3) Secretary/Treasurer, Family Policy Section; Member, Religion and Family Life Section; Member, Southeastern Council. 4) NAEYC, Child Care Action Campaign; Voices for Illinois Children. 5) The activities of the Family Policy section provide a unique opportunity for family scholars to broaden their knowledge about families, as well as think about ways their work can be applied outside of academia. As Vice-chair of the Family Policy section, I would work hard to continue efforts to educate and inspire our colleagues regarding family policy issues. I would also encourage and work towards more discussion about and collaboration on family policy issues, in particular theory and research, among section members and ways to disseminate information among NCFR members and the public at large.

Family Policy Section Secretary/Treasurer



Smith

Hallie Duke, MS

1) Graduate Assistant. 2) Graduate Assistant. 3) Member, Family Policy Section; Student/New Professional Representative of Family Policy Section. 4) Society for Research in Child Development. 5) Today's political climate is creating many changes for families of all kinds. As a continuing member of the Family Policy section, I believe it is critical for family scientists to participate in the policy arena. By continuing to be active in the Family Policy section and by participating in its leadership, I hope to facilitate NCFR members' understanding and access to the critical information that will get them involved. As the Secretary/Treasurer of the section, my goal would be to support the section's membership in their interest and involvement in advocacy and policy work.

Stephen C. Smith

1) Ph.D. student in Family Studies, Purdue University. 2) Student. 3) S/NP representative, Religion and Family Life Section. 4) — 5) As Section secretary/treasurer, I will assist the

continued on Page 20

Elections from Page 19

Section chair in whatever duties are needed. I will be very accessible to Section members and willing to provide information as needed. I see recruiting new members as an important part of my responsibilities and will seek to motivate others in doing so also.

Family Policy Section Student/New Professional Representative



Kirby

Jacqueline J. Kirby, M.S.

1) Extension Associate, Human Development and Family Life, The OH State University. 2) Patient Account Coordinator, Columbus Community Hospital. 3) Member NCFR, Family Policy, Family Science, and Research and Theory Sections. 4) President-elect, OH Extension Professional Association; Family Resource Coalition of OH; OH Association of Family Based Services; National Network for Family Resiliency. 5) If elected Family Policy Section Student/New Professional, I will strive to accomplish the following objectives: a) increase recruitment of students to the Family Policy Section, b) increase awareness within NCFR of Family Policy Section Student/New Professional contributions to research and practice, c) coordinate mentoring opportunities for students/new professionals, and d) coordinate professional development opportunities to take place at NCFR, specifically targeted to students and new professionals interested in family policy.

Lisa A. Riley, Ph.D.

1) Assistant Professor, Sociology, Creighton University. 2) Graduate student, research assistant, University of Notre Dame. 3) Paper presentations at conference; member, Family Policy Section; Committee for the Ruth Jewson Dissertation Award. 4) American Sociological Association; Society for Applied Sociology; Society for the Study of Social Problems. 5) I will encourage researchers, especially students and new professionals, to focus on the family policy implications of their work. By focusing on how research can be utilized—at the local, state, national, and international levels—we can affect the quality of family lives. It is essential that research findings are reported not only in our journals, but to those in positions to implement changes and help families in every country. Additionally, new professionals and students face financial and other barriers. I will enhance my commitment to finding grants and funding opportunities for us. Thank you for your consideration.

Family Therapy Section Nominating Committee



Hardy



Killian



Russell



Serovich

D. Russell Crane, Ph.D.

1) Professor and Program Director, Marriage and Family Therapy Programs, Brigham Young University. 2) Visiting Professor, the Tizard Center and Senior Member of Keynes College, University of Kent at Canterbury, England; Family Therapy Trainer, District Psychology Service, Canterbury and Thanet Community Healthcare Trust, National Health Service of Great Britain. 3) Chair, Family Therapy Section; Chair, Membership Committee and Member of the Advisory Committee, Family Therapy Section; Member, Membership Committee; Member, Pre-conference Workshop Committee, Family Therapy Section; Member, Board of Directors, UT Council on Family Relations. 4) AAMFT Fellow, Approved Supervisor and Clinical Member; Association for Family Therapy (Great Britain). 5) I see the role of the Nominating Committee to be that of seeking out and inviting members of the section to participate in the sections governance. Participation in section activities is opened to all section members, either by self nomination or recommendations from others. The more members are willing to step forward and participate, the stronger the section will be. Please contact me and express your interest in running for any of the section offices.

Kenneth V. Hardy, Ph.D.

1) Associate Professor of Marriage and Family Therapy, Syracuse University. 2) Chair, Department of Child and Family Studies, Syracuse University. 3) Membership Committee; Vice Chair, Family Discipline Section; Family Therapy Section; Ethnic Minority Section. 4) American Association of Marriage and Family Therapy; American Family Therapy Academy; American Association of Marriage and Family Therapy Licensing Boards. 5) I would like to work on behalf of the section to identify leaders who will ensure our continued growth and viability. If elected I will be committed to endorsing slates that reflect experienced, visionary leadership and diversity. Furthermore, I will assist in recruiting individuals who have a willingness to forge strong collaborative relationships with other sections of our organization.

Charles C. Hendrix, Ph.D.

1) Associate Professor and Director, Marriage and Family Therapy Specialization, OK State University. 3) President, OK Council on Family Relations. 4) American Association for Marriage and Family Therapy, Clinical Member and Approved Supervisor; Commission on Accreditation for Marriage and Family Therapy Education, Site Visitor; OK Association for Marriage and Family Therapy, Board Member, President. 5) I will attempt to increase participation in Family Therapy Section elections through actively seeking qualified candidates from a variety of backgrounds, including education, geographic region, ethnicity, and gender.

Kyle D. Killian, A.B.D.

1) Instructor, Department of Human Services, Onondaga Community College, Syracuse, NY; Therapist, Oberlin, OH. 2) Couple and family therapist, Onondaga Pastoral Counseling Center; Resident Coordinator, International Living Center, Syracuse University, Syracuse, NY. 3) Editor, Newsletter, Family Therapy Section; Member of Ethnic Minorities and Family Therapy Sections; Reviewer of conference abstracts for the Family Therapy and Ethnic Minorities Sections; Presenter/presider at past six annual conferences of NCFR. 4) American Association for Marriage and Family Therapy, Clinical Member; New York Association for Marriage and Family Therapy. 5) As a student, new professional, and editor of the section newsletter, I have acquired a working knowledge of how the Family Therapy Section functions and the experiences/qualifications which lead to effective leadership within the various offices of the section. I am motivated to see our section and NCFR as a whole continue their journey towards inclusiveness in its membership. I believe it is important to foster growth in our members by honoring their achievements and providing opportunities for both mentoring and leadership. As part of the nominating committee, I will actively pursue these goals. Thank you for your consideration.

Candye S. Russell, Ph.D.

1) Vera Mowery McAninch Professor of Family Studies and Human Services, KS State University, Manhattan. 2) Professor, Human Development and Family Studies, KS State University, Manhattan. 3) Personnel Committee; Research and Theory Section; Family Therapy Section. 4) AAMFT Secretary, Ethics Committee, Elections Committee; Board Member, Association of Marital and Family Therapy Regulatory Boards; Editorial Advisory Boards for *Journal of Marital and Family Therapy*, *American Journal of Orthopsychiatry*. 5) NCFR is unique in that it actively nurtures dialog among researchers and practitioners and encourages us to think about the broader implications of our work. There may be no more appreciative forum for the presentation of small scale family therapy process and outcome studies than that provided by NCFR. The researcher/practitioner identity is nurtured, and locally collected data generates excitement. Our Section also does an outstanding job of encouraging and mentoring new professionals and including them in the "business" of the organization. This encouraging, supportive atmosphere is something our membership values. I would want us to elect leaders who know how to encourage connection and collaboration among our membership.

Julianne M. Serovich, Ph.D.

1) Assistant Professor and Director of the Marriage and Family Therapy Program, The OH State University. 2) Assistant Professor of Marriage and Family Therapy, TX Tech University. 3) Family Therapy Section, Member-at-Large; Chair, Family Therapy Section Award Committee; Associate Editor, *Family Relations*; Reviewer for NCFR Family Therapy Section conference submissions; Reviewer for NCFR Family Health Section conference submissions and New Professional Award. 4) American Association for Marriage and Family Therapy, OH Association for Marriage and Family Therapy. 5)

Nominating committees are important as they are responsible for producing a slate of potential candidates for key offices. In order for the Family Therapy Section of NCFR to continue to grow and succeed, principal positions in the section must be occupied by dedicated, capable, and dependable persons. These qualifications are, however, only minimal. Frequently overlooked is the need for persons who represent diverse backgrounds and interests. It is with the focus of promoting diversity in the leadership of the Family Therapy Section that I would perform my committee duties.

Karen S. Wampler, Ph.D.

1) Professor of Marriage and Family Therapy, TX Tech University. 2) Associate Professor, University of GA. 3) Reuben Hill Award Committee; Publications Committee; Search Committee for *Family Relations* editor; Secretary and Vice-Chair, Family Therapy Section. 4) AAMFT, SRCD, AFTA. 5) My goal is to bring new professionals into active participation in NCFR and to help keep NCFR as a primary organization for those interested in marriage and family therapy research.

Feminism and Family Studies Section Chair



Crosbie-Burnett



Sollie

Margaret Crosbie-Burnett, Ph.D.

1) Associate Professor and Chair, Dept. Of Educational and Psychological Studies, University of Miami, Coral Gables, FL. 2) — 3) Chair, Focus Group on Remarriage and Stepfamilies; Chair, Theory Construction and Research Methods Workshop; secretary/treasurer, Feminism and Family Studies Section; Review Board, *Family Relations*; Publication Committee; conference presenter. 4) American Psychological Association; American Counseling Association; American Educational Research Association; Groves Conference. 5) As a Counseling Psychologist, I would continue the feminist tradition of attention to interpersonal processes between members of our Section, and also to relations between our Section and other units within NCFR. I would also continue the tradition within FFSS of all types of diversity. My research in heterosexual and gay and lesbian stepfamilies, gay's and lesbians' families of origin, post-divorce families, and the interface between families and schools has stretched traditional approaches to family studies. Perhaps most importantly, I would try to increase the gender and racial/ethnic diversity of our Section.

Donna L. Sollie, Ph.D.

1) Full Professor, Human Development and Family Studies, Auburn University. 2) Associate Professor, Family and Child Development, Auburn University. 3) Nominating Committee; Research and Theory Section Nominating Committee, Vice-chair; Feminism and Family Studies Section Chair, Feminist Teaching Committee; Member of Research and Theory, Feminism and Family Studies, Family Action, Education and Enrichment Sections; Presenter and presider at annual meetings; *Family Relations* Editorial Board; Local

Arrangements and Hospitality Suite; Alabama Council on Family Relations Board Member, Awards Committee; Texas Council on Family Relations Program Planning Committee, Southeastern Council on Family Relations. 4) International Society for the Study of Personal Relationships, Board Member, Secretary/Treasurer, Membership Committee; Groves Conference on Marriage and the Family; AAMFT. 5) The Feminism and Family Studies Section has played a key role in bringing feminist perspectives to our scholarly understanding of families. The sense of connection and purpose that has provided the underpinnings of the section from its beginnings has remained at its core, nurturing our intellectual growth both individually and collectively. Our challenge is to maintain our connectedness as feminism becomes more diverse, and to remain committed to the critical importance of feminist voices for family scholarship.

Feminism and Family Studies Section Vice-chair



MacDermid



Secombe

Shelley MacDermid, Ph.D.

1) Associate Professor of Child Development and Family Studies and Director, Center for Families, Purdue University. 2) Head of the Graduate Program in Child Development and Family Studies. 3) Editorial boards, **Journal of Marriage and the Family**, **Family Relations**; Chair, Technology Task Force; Member, Reuben Hill Award Committee; Sections: Co-chair, Focus Group on Individual Development in the Context of the Family, Research and Theory; Secretary/Treasurer, Chair of Award Review Committee, Feminism and Family Studies; Member, Endowment and Mentoring Committees; Mentor, Mentoring Program; Review national conference submissions for Family Policy, Research and Theory, and Feminism and Family Studies sections; Affiliated Councils: President, President-elect, Past President, Program Co-chair, Program Committee Member, Indiana Council; Faculty Advisor, Purdue University Council. 4) Alliance of Work Life Professionals; Society for Research in Child Development; Groves Conference on Marriage and the Family; Teaching Family Science Network; Academy of Management. 5) Our section has brought great innovation to NCFR conferences by inviting speakers, developing innovative formats, and collaborating with other sections in exciting forums. These sessions are memorable and continue to influence the field (e.g., "Impassioned Teaching"). As Vice Chair, I would work with the Chair to continue this innovativeness. I also would work to grow our endowment to fund both FFSS awards at the same level. Finally, I want to nurture new models of mentoring that improve resources available to our student and new professional members as well as to more advanced scholars.

Karen Secombe, Ph.D.

1) Associate Professor, Department of Sociology, University of FL. 2) Assistant Professor, Department of Sociology, University of FL. 3)

Membership Committee; Nominations Committee; Deputy Editor, **Journal of Family Issues**. 4) American Sociological Association, Member of Family Sociology and Medical Sociology Sections; Pacific Sociological Association; Gerontological Society of America; Associate Editor, **Journal of Health and Social Behavior**. 5) A little over ten years ago I circulated a petition to assist in getting the required number of signatures to create this wonderful section. While most people I approached gladly signed the petition, I remember one gentleman who refused, saying, "Why do we need a section on feminism?" My explanation about the importance of feminist scholarship for family studies fell on deaf ears. Despite his unwillingness, our section not only materialized, but has flourished! We have a large and spirited section—even our business meetings are exciting events. I would be very proud to continue the hard work done by others before me to ensure that our section remains alive, vibrant, and visible.

Feminism and Family Studies Section Secretary/Treasurer



Fine



Knudson-Martin

Dr. Mark A. Fine

1) Professor and Chair of the Department of Human Development and Family Studies, University of MO-Columbia. 2) Professor of Psychology, University of Dayton. 3) Editor, **Family Relations**; Associate Editor, **Journal of Marriage and the Family**; Publications Committee; Reuben Hill Award Committee; Member of Theory Construction and Research Methodology Ad-Hoc Committee on Royalty Account; Deputy Editor, **Journal of Family Issues**; Volunteer Mentor, Mentorship Program. 4) International Network on Personal Relationships; International Society for the Study of Personal Relationships; Society for Research in Child Development; American Psychological Association; Stepfamily Association of America. 5) In addition to being a thorough and reliable recorder of meeting minutes and a careful steward of Section funds, I am committed to furthering the interests of the Section. I have been energized professionally by the Section and would like to help others who have not been involved in the Section to receive a similar benefit. Above all, I will work to strengthen feminist scholarship, pedagogy, and practice in and outside of NCFR.

Carmen Knudson-Martin

1) Associate Professor and Director of the Marriage and Family Therapy Program at MT State University. 2) -- 3) Currently newsletter editor of the Feminism and Family Studies Section. 4) American Association of Marital and Family Therapy; Groves Conference on Marriage and the Family; American Counseling Association. 5) In many ways families are the front lines for feminism; where ideals are translated in practice. While some folks see interests in feminism and interests in families as incompatible, our growing section provides an important professional home

for those of us who are committed to both. The Section offers an important forum for high quality feminist scholarship and support and has helped to shape the dialogue within NCFR and other institutions. I would welcome the opportunity to contribute to the Feminism and Family Studies section as it expands this important role.

Feminism and Family Studies Section Newsletter Editor



Carolan



Marks

Marsha T. Carolan, Ph.D.

1) Assistant Professor, Department of Family and Child Ecology, MI State University. 2) Family Therapist and Clinical Supervisor, New River Valley Communities Services Board, Field Study Coordinator, Human Service Program, VA Tech. 3) Jewson Award Committee, Family Therapy Section Awards Committee, Student/New Professional Awards Committee, Feminism and Family Studies Section Reviewer, Discussant, Presenter. 4) Approved Supervisor, American Association for Marriage and Family Therapy, Southern Gerontological Society, Kappa Omicron Nu. 5) Membership in the feminist section has been a steady source of inspiration and connection for me since I joined NCFR as a graduate student five years ago. My personal and professional life has been devoted to achieving equity for women and children in their individual and family lives, and no other professional affiliation has contributed to my work as this section has. As editor of the newsletter, I will have the opportunity to give back a little of the warmth, scholarship, and connection that I have experienced in this section. My plans for the newsletter include using it as a forum for highlighting emergent feminist literature and research and as a means of increasing networking within our section.

Stephen R. Marks

1) Professor of Sociology, University of ME. 2) -- 3) Nominating Committee. 4) American Sociological Association, International Society for the Study of Personal Relationships (ISSPR), INPR. 5) As Newsletter Editor, I will try to balance information about upcoming NCFR events with exchanges of insight about feminist issues and news of projects on the part of our members. For myself, feminism remains a source of nourishment, enrichment, and personal growth. Because of this, I am continually surprised and saddened by the "I-am-not-a-feminist-but..." mentality, through which otherwise thoughtful people see a need to distance themselves from feminism. I want people to take pride in calling themselves feminists. The newsletter might foster some stimulating exchanges about how a feminist identity might become a more positive one in the public mind.

Feminism and Family Studies Section Student/New Professional Representative



Catlett



Gilbreth



O'Shea



Parson



Raymond

Beth S. Catlett, M.S.

1) Doctoral Candidate, Department of Family Relations and Human Development, The OH State University. 2) Program Director/Counselor, Continuing Education for Women, George Washington University. 3) NCFR, Feminism and Family Studies Section, Research and Theory Section member; OCFR member; Qualitative Family Research Network. 4) National Women's Studies Association; American Sociological Association. 5) For me, the Feminism and Family Studies Section has been an invaluable point of entry, and I want to make it an intellectual home for its members. To do so, we must recognize the section as a significant point of identification for us as feminist family scholars. As it has for me, the section can serve as a base from which to foster and build connections between feminist-inspired approaches and more conventional family science. To begin to accomplish this goal, I would focus on creating ways in which to develop dialogue and collaborations across the NCFR population.

Joan G. Gilbreth, M.S.

1) Doctoral Student, Sociology, University of NE-Lincoln; Graduate Teaching Assistantship. 2) Project Coordinator, Nebraska Family Wellness Project; University of NE-Lincoln, Cooperative Extension Division. 3) Member, Feminism and Family Studies Section. 4) Midwest Sociological Society; Kappa Omicron Nu; American Association of Family and Consumer Sciences; NE Association of Family and Consumer Sciences. 5) It is more critical than ever that feminist perspectives be used in Family Studies, if we are to adequately address the multiple family issues of this time in history. The members of the FFS Section bring incredible insight and innovation to this effort. My goal as a S/NP Representative would be twofold: a) to strengthen ties between students/new professionals and established members, thereby fostering

continued on Page 22

from Page 21

each others' growth in the Section and in the field, and b) to actively seek the inclusion and participation of women and men of color in this section.

Roxanne L. Hill, MFT

1) Research Assistant, Career Service Task Force, Syracuse University; Doctoral candidate, marriage and family therapy program, Syracuse University. 2) Assistant to the Director of Career Development, College for Human Development, Syracuse University. 3) Member, Feminist and Family Studies Section; Member, Ethnic Minorities Section. 4) American Association of Marital and Family Therapy. 5) Having recently returned to graduate studies for a Ph.D. program in MFT, I have an informed view of the needs of both students and new professionals. I am committed to the advancement and integration of feminism through the family science field, and the council. Furthermore, my educational, social service, clinical, and administrative experiences prepare me to excel as the Student/New Professional Representative. These experiences have prepared me to effectively communicate ideas, problem-solve, and contribute through teamwork. If elected, I will take great pride in carrying our social justice concerns to the broader NCFR membership.

Kaitilin O'Shea

1) Doctoral Candidate, Department of Individual and Family Studies, University of DE. 2) Health Education Department Chair, Redland Middle School, Rockville, MD. 3) Symposium Author and Discussant; Round Table Presenter. 4) Eastern Sociological Society, Society for Research on Adolescents, Society for the Scientific Study of Sex. 5) As an active student member for the past four years, I have become familiar with NCFR and its workings from "the ground floor and up." As I transition into a new professional position in the near future, I would like to have the opportunity to serve the Feminism and Family Studies Section encouraging an actively growing membership at present. It is through the Feminism and Family Studies Section that NCFR has expanded its visions of the diversity of family structures, processes, and policies. I plan to encourage our new students, especially, in having their voices heard through conference participation and professional development in NCFR.

Maya C. Parson, B.A.

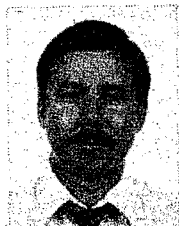
1) Research Analyst, Qualitative Family Planning Evaluation Project, Department of Social and Health Services, WA State. 2) Research Assistant, Family Studies Program, The Evergreen State College, Olympia, WA; Co-author with Stephanie Coontz, "Complicating the Contested Terrain of Work/Family Intersections" Signs (22), 2, 1997. 3) NCFR and Feminism and Family Studies Section member. 4) American Sociological Association. 5) As a young feminist scholar concerned with broadening FFS's outreach and efficacy both theoretically and on a practical level, I would strive for greater race, class, age, and gender representative, making particular efforts to reach community college students, undergraduates, and those not bound for graduate school. As S/NP Representative, I would aim to draw in

and give a hand up to younger members from a variety of academic and non-academic settings. My interdisciplinary education has shown me the value of diversity and I believe there is great potential for FFS to strengthen its appeal and impact by broadening its representation.

Meghan Raymond

1&2) Fourth-year graduate student, University of Arizona, Department of Family Studies Ph.D. program; departmental positions: Graduate Student-Faculty Representative; Vice-president of the University of Arizona Family Studies student organization. 3) NCFR member; Feminism and Family Studies Section; Recipient of the 1995 Jessie Bernard Research Proposal Award; research presented at a Distinguished Round table; Reviewer, Feminism and Family Studies Section conference submission and Jessie Bernard Awards; Sexuality Focus Group. 4) APA Psychology of Women Division, National Women's Studies Association, Society for Research on Adolescence, Society for Research in Child Development. 5) At the 1996 Feminism and Family Studies Section meeting, it was announced that we have become the 4th largest section of NCFR. It will be increasingly important, therefore, for the S/NP representatives to collaborate as historians in documenting the distinctive past contributions that have ensured FFS's success, and as hospitality chairs to continue the tradition of a welcoming, warm, and exciting section meeting at the 1998 conference. Additionally, I believe it essential to recognize and encourage the valuable participation of other S/NP members. This goal would include enhancing networks between members (e.g., through the FFS listserve) to facilitate both supportive personal connections and professional feminist alliances.

International Section Chair



Ingoldsby

Bron Ingoldsby, Ph.D., CFLE

1) Chair, Family Science and Home Economics Department, Ricks College. 2) Professor and Chair, Family Science Department, Ricks College. 3) Chair, Religion and Family Life Section; President, Idaho/Montana Council on Family Relations; Secretary/Treasurer, the Religion and Family Life and the Family Science Sections. 4) Associate Editor, *Journal of Comparative Family Studies and Family Science Review*; President, Idaho/Ecuador Chapter of Partners of the Americas; Board member, Silver Sage Girl Scout Council. 5) I am a charter member of the International Section, joining at what was also my first NCFR conference in 1977. I have been active in the section since that time, only missing one or two section business meetings in the last 20 years. My own research has been in the area of the family in Latin America, and I am the senior editor/author of the textbook *Families in Multicultural Perspective*. If elected to the Board, I will strongly push for a more international focus within NCFR, including a name change and holding some conferences outside of the USA.

International Section Vice-chair



Lavee



Schvaneveldt

Yoav Lavee, Ph.D.

1) Senior Lecturer and Director, Graduate Studies, School of Social Work, Faculty of Social Welfare & Health Studies, University of Haifa, Israel. 2) Lecturer and Director, Graduate Program in Family Studies, School of Social Work, University of Haifa. 3) Member: International, Research and Theory, Family Therapy, and Family and Health Sections; active participation in NCFR annual meetings and Theory Construction and Research Methodology Workshops; Planning Committee, International Year of the Family workshop; Reuben Hill Award Committee; National Nominating Committee; Editorial Board, *Journal of Marriage and the Family* and reviewer for *Family Relations*. 4) Clinical member, AAMFT; Israeli Association for Marriage and Family Therapy (Executive Board); Israeli Association for Sex Therapy (Board of Directors); Israeli Psychological Association. 5) As Vice Chair I will work in cooperation with other Section officers to: a) strengthen NCFR's commitment to international family scholarship; b) develop professional ties between NCFR and related family organizations around the world; c) promote NCFR members' involvement with cross-national research; d) advance co-sponsorship of sessions at the annual meetings between the International Section and other Sections, in order to increase visibility and awareness of international and cross-national research; and e) encourage international student membership and active participation in NCFR.

Jay D. Schvaneveldt, Ph.D.

1) Professor, Department of Family and Human Development, Utah State University, Logan, UT. 2) Fulbright Professor, College of Health Sciences and University of Bahrain, Manama, Bahrain; Professor and Head, Department Family and Human Development, UT State University, Logan. 3) Program Vice-president; Chair, Research and Theory, Family Science Sections; Chair, Reuben Hill Research and Theory Award; Secretary, Affiliated Councils; UT Council on Family Relations; NCFR Board member for several years; active member of NCFR. 4) Fulbright Association-Life Member, American Sociological Association, American Association of Family and Consumer Sciences. 5) The International Section is the key force in NCFR to reach out to the international community of family scholars. As the "world shrinks" and we become more of a world community, it is critical that NCFR provides leadership and a scholarly home for students of the family from diverse nations of the world. My teaching, research, and program evaluation in ten different nations gives me a world perspective, a contextual understanding, and the international connections to provide needed leadership for the International Section of NCFR.

International Section Secretary/Treasurer



Hamon

Raeann R. Kunkle Hamon, Ph.D., CFLE

1) Associate Professor, Family Studies and Gerontology; Chairperson, the Behavioral Science Department, Messiah College. 2) Assistant Professor, Family Studies and Gerontology, Messiah College. 3) Member, International Section and Feminism and Family Studies Section; PA/DE CFR; Board Member and President of PA/DE Council on Family Relations. 4) Caribbean Studies Association; Gerontological Society of America; International Network of Interpersonal Relations. 5) I would welcome the opportunity to contribute to and become more involved with the International Section. As Secretary/Treasurer, I would do my best to maintain accurate financial and secretarial records. In addition, I would hope to assist in providing the supports necessary to foster a strong section within NCFR.

International Section Student/New Professional Representative

Xiaolin Xie

1) Assistant Professor, Psychology and Human Ecology, Cameron University. 2) Ph.D. student, Family and Consumer Sciences Department, University of NE-Lincoln. 3) International Section. 4) -- 5) My goals as an International Section Student/New Professional Representative are: a) to introduce NCFR to students and professionals in some Asian countries, like Singapore and China; b) to create workshops on making transitions as international students, e.g., how to deal with loneliness and re-establish a support network; c) to create workshops on parenting issues, such as the balance between maintaining relationships with the mainstream and keeping ethnic identity; and d) to create workshops on career development issues, such as teaching skills, the transition to a faculty position, and faculty-student relations.

Religion and Family Life Section Chair



Morris



Tiesel

Michael Lane Morris, Ph.D., CFLE

1) Assistant Professor, Department of Child and Family Studies, University of TN, Knoxville. 2) Director, Institutional Advancement, West Coast Christian College, Fresno, CA. 3) Member, Religion and Family Life Section and Education and Enrichment Section; Certified Family Life Educator. 4) Associate Member, American Association of Marriage and Family Therapist; Licensed Clergy. 5) Since

Research and Theory Section Chair



Amato



Christopher

Paul R. Amato

1) Professor of Sociology, University of NE-Lincoln. 2) Research Fellow, Australian Institute of Family Studies. 3) Editorial Board, **Journal of Marriage and the Family**; Publications Committee; Reuben Hill Award Committee. 4) American Sociological Association; Population Association of America; Midwest Sociological Association. 5) The NCFR journals and the NCFR national conference are the world's premier sources of information on family research and theory. Nevertheless, the Research and Theory Section can do more to make our organization even stronger. Our continuing goals should be to welcome new theoretical and methodological approaches, encourage greater student involvement, make the public better aware of our research, and forge stronger ties with international researchers. At the same time, we must protect the high standards of rigor in method and theory that underlie our discipline.

F. Scott Christopher, Ph.D.

1) Associate Professor of Family Studies, AZ State University. 2) Assistant Professor of Family Studies, AZ State University; Assistant Professor of Family Studies, University of NV-Reno. 3) Secretary/Treasurer of the Research and Theory Section; **Family Relations** Editorial Board member for past three editors; Ad hoc reviewer for **Journal of Marriage and the Family**; Reviewer for conference submissions for the Research and Theory, Feminism and Family Studies Sections. 4) Associate Editor, **Journal of Sex Research**; International Society for the Study of Personal Relationships; International Network for the Study of Personal Relationships. 5) I envision the Research and Theory Section Chair as fulfilling a range of roles in service to section members. First, Annual Conference presentations need to include high quality quantitative research that represents the diversity of Family Science topics. To this end, I would facilitate a thorough, but fair review of submissions by section members. Second, I would support sponsoring keynote speakers at the Annual Conference who represent the interests of the section. Third, I would work with award/committee chairs to ensure the timely recognition of scholars who advance our field. Finally, I will represent section interests to the Board.

continued on Page 24

ATTENTION MEMBERS!

Now you can reach
NCFR
on a Toll-free Line:
1-888-781-9331

U.S. and Canadian Calls Only.

1990, the Religion section of NCFR has been the venue for presenting my research papers and posters concerning stress in clergy families. My vision for the Religion Section includes fostering and encouraging deeper and broader based discussions of the importance of this dynamic reciprocal relationship through examinations of the social constructs of fathering, mothering, grandparenting, and childhood. A few of the qualitative and quantitative research inquiries that I feel the Religion Section should address include: How have the social constructs of grandparenting, parenting, and childhood been positively and negatively influenced by religion over time, within gender, within religious affiliation, and within educational, economic, and ethnic class? What relevant service does religion provide for guiding and shaping the formulation and development of proactive, positive family role paradigms that lead to family strength and well-being? How should the contemporary messages from religious education and family life education be converged to formulate prevention and intervention programs and legislative policies that socialize family member character (e.g., morals and values), competence (e.g., self-esteem and self-concept) and control (e.g., discipline) regarding content issues of sexuality, chemical abuse, domestic violence, literature and the arts, technology, work/family, etc.? As a relatively new NCFR professional, I am excited about the opportunity to solicit and encourage student and new professional involvement in the Religion Section. The scholarship tradition of this section has placed it in a unique vantage point to foster fresh, new voices in addressing the salient issues of families living in contemporary times.

Judy Watson Tiesel, Ph.D.

1) Private practice in therapy, consultation and family research; Adjunct faculty at Saint Mary's University, Minneapolis and Bethel Seminary, St. Paul, MN. 2) Psychologist, Family and Children's Service of greater Minneapolis. 3) Vice Chair and Student/New Professional Representative to Religion and Family Life Section; Research and Theory Section; Family Therapy Section; Feminism and Family Studies Section. 4) Board of Directors, MN Association of Marital and Family Therapists; American Association for Marriage and Family Therapy; Kappa Omicron Nu; Licensed Marriage and Family Therapist; Licensed Psychologist. 5) Through my involvement as a section member and officer, I have seen our group struggle with identity issues and the section's mission. We must continue the struggle in order to reflect the diversity of religious beliefs both within the section and within NCFR. I believe within-section communication contributes to our identity, and collaboration with other sections contributes to our mission by highlighting how spirituality is woven through the family. The momentum we've gained through emphasizing scholarly research and collaborating with other sections must be maintained, or we risk diffusion of focus.

Have you recruited
a member lately?

Call Kathy toll free at 888-781-9331 ext. 21 for brochures and other materials.

Let's all help NCFR grow into the next century!

Religion and Family Life Section Vice-chair



Dahl



Smith

Carla M. Dahl, Ph.D.

1) Associate Professor, Marriage and Family Studies, Bethel Theological Seminary, St. Paul, MN. 2) Adjunct Associate Professor, Saint Mary's University; Dahl and Martin Counseling Resources. 3) Membership in and submission of proposals through Religion and Family Life and Feminism Sections; Participation in Section meetings, symposia, and TCRM workshops. 4)–5) I would like the section to focus on the following emphases: increased clarity regarding the mission of the section; increased sense of investment in the section on the part of its members; and increased collaboration with other sections. Since I see spirituality as a core element in the family, linkages between our work and that of other sections seem both natural and important.

Suzanne R. Smith

1) Instructor, Child and Family Development, University of GA. 2) Graduate Student. 3) Religion and Family Life Section Secretary/Treasurer; NCFR Technology Task Force; Southeastern Council on Family Relations. 4) National Association for the Education of Young Children (NAEYC). 5) I feel there are two primary goals for this section: a) increasing membership, and b) increasing the number of proposal submissions for the Annual Conference. Publicizing this section at the Annual Conference, in the NCFR Report, and within departments and communities are ways to encourage membership. Many are unaware of the diversity of our section, and the exciting things being done by its members. Spending time in business meetings networking with others with similar interests and producing a quarterly section newsletter will stimulate ideas for quality proposal submissions. While scholarship is a driving force, it's also important to have some fun.

Religion and Family Life Section Secretary/Treasurer



Coulter

John Conger Ph.D.

1) Chair, Dept. of Family and Consumer Sciences, David Lipscomb University. 2) Assistant Professor, Family and Consumer Sciences, David Lipscomb University. 3) Past president, TN Council on Family Relations; member: Religion and Family Life, Education and Enrichment Sections; member, Work and Family, Midlife Family and Men in Families focus groups. 4) American Association of Family and Consumer Sciences; National Association for the Education of Young Children. 5) It would be a privilege to serve this Section in this way. I am available and willing to carry out the

responsibilities of this office. I have served as a past president of an affiliated council, and have been a member of the Section for a number of years. I will do my part to see that it continues to thrive and serve Section members.

Fred W. Coulter, M. Div.

1) Ph.D. Student, The University of TN, Knoxville. 2) Minister, First Congregational Church, United Church of Christ, Ledyard, CT. 3) – 4) Ordained Minister, United Church of Christ. 5) My 15 years' experience in the parish ministry heightened my awareness of the need for research and the application of theory to family life in religious communities. As the secretary/treasurer, I bring an "old" professional perspective to the section. I will continue the mission of the section to help family members broaden and deepen the understanding of their faith in the context of contemporary society.

Religion and Family Life Section Student/New Professional Representative



Fox

Curtis A. Fox, M.S., CFLE

1) Ph.D. Candidate, Department of Child and Family Studies, University of TN, Knoxville/Graduate Teaching Associate. 2) – 3) Participated in Family and Health, Ethnic Minority, and Religion and Family Life Sections. 4) American Association of Marriage and Family Therapists, Society for Research on Adolescents. 5) Religion plays a very important role in the lives of many families. This issue is the main emphasis of my present doctoral research and a significant interest of mine. As the Student/New Professional Representative of the Religion and Family Life Section, I will pursue the following goals: a) support the goals of the Section, b) encourage greater participation among students, c) harness research efforts studying religiosity, and d) be an active voice for students' concerns. My interest in reaching out to my peers and my administrative skills may serve to make this task both enjoyable and successful. I welcome the opportunity to serve.

Dave Sager, M.A.

1) Ph.D. candidate, Family Relations, OK State University. 2) Master's degree, Marriage and Family Therapy, Abilene Christian University. 3) Conference presenter, reviewer; member: Religion and Family Life, Education and Enrichment, and Family Therapy Sections; member, secretary, OK Council on Family Relations. 4) OK Association of Marriage and Family Therapy. 5) I have been a participant in the Religion and Family Life Section for the past three years, but I am eager to make a greater contribution to the advancement of this Section. My hope is to increase the enrollment and participation of the members of this Section through advertisement, recruitment, and incentives. The ultimate goal of this dream is to increase the amount and quality of research and practice in the area of religion and family life.

from Page 23

Research and Theory Section Vice-chair



Lloyd



Sanchez

Sally A. Lloyd

1) Professor of Family Studies and Social Work, and Associate Dean of Education and Allied Professions, Miami University. 2) Associate Professor of Family and Consumer Studies, University of UT. 3) Member, Reuben Hill Award Committee; Member, Research and Theory Nominating Committee; Editorial Board of *Family Relations*; Abstract reviewer, Research and Theory and Feminism and Family Studies Sections; Member, Awards Committee, Feminism and Family Studies Section. 4) Co-organizer of the 1997 International Network for Personal Relationships Conference; Member of the editorial board for the *Journal of Social and Personal Relationships*; Member of International Society for the Study of Personal Relationships, International Network for Personal Relationships. 5) --

Laura Sanchez, Ph.D.

1) Assistant Professor of Sociology, Tulane University. 2) Assistant Professor of Sociology, University of NE-Lincoln. 3) NCFR Theory and Research Section Member; Ad hoc reviewer, *Journal of Marriage and the Family* and *Journal of Family Issues*. 4) American Sociological Association, Population Association of America, Sociologists for Women in Society, Midwest Sociological Society. 5) I will serve the Research and Theory section by a) assisting the Chair with Executive Committee, Annual Program Committee, and Board of Directors duties, b) encouraging interdisciplinary professional connections to promote dialogue among NCFR scholars about research and theory innovations relevant to family studies and therapies, c) developing more public forums at annual meetings to discuss controversial national-agenda family topics, such as gay/lesbian marriage, ebionics in our school systems, and the politics of international adoption, and d) working with the S/NP Representative to recruit new professionals and students from a broadened array of family-related disciplines.

Research and Theory Section Secretary/Treasurer



Manning



Wright

Wendy Manning, Ph.D.

1) Assistant Professor, Department of Sociology, Bowling Green State University. 2) Past doctoral Fellow, PA State University. 3) Member, Research and Theory Section. 4) American Sociological Association, Population Association of America. 5) I will work with the other members of the Research

and Theory Section to continue the tradition of high quality annual meeting sessions and promote membership in NCFR and the Research and Theory Section. I am particularly interested in encouraging membership and active participation of new professionals and students. I will work with the section members to develop more links between the Research and Theory Section and policy development and evaluation.

David W. Wright Ph.D.

1) Associate Professor, KS State University. 2) Doctoral Student, University of GA. 3) NCFR member; Chair, Mentoring Task Force; member, Publications Committee; member, Membership Committee; Chair, Family Therapy Section and member of NCFR Board of Directors; member, Nominating Committee; Past-president, KS Council on Family Relations; Juror, Reuben Hill Award; Juror, Distinguished Service to Families Award; active participant at NCFR conferences. 4) American Association for Marriage and Family Therapy, Kappa Omicron Nu. 5) As a long-time member of the Research and Theory Section, I view it as an honor to be nominated for this office. Since the section is vital and active, I view my roles as especially important. In my role as secretary I will ensure that accurate records are kept of meetings. In my role as treasurer I will ensure that the section's resources are well accounted for and used appropriately.

Research and Theory Section Student/New Professional Representative



Minton



Lacy

Carmelle Minton

1) Instructor of Human Development and Family Studies, University of MO-Columbia. 2) Graduate Student/Research Assistance of Human Development and Family Studies, University of NC at Greensboro. 3) Member of NCFR; Research and Theory Section; Task Force on Future Conferences; Southeastern Council on Family Relations; NC Council on Family Relations. 4) Association of Family and Conciliation Courts. 5) Long term NCFR members state that NCFR is like a professional family and that section involvement can help to develop this atmosphere. It is my goal to increase that feeling of a professional family among the students and new professionals. To this end, I would work to raise the participation of this group by increasing interest in the activities of the section and opportunities for their involvement. By doing so, I hope that the turn-over rates of student members will decrease, and the Research and Theory section will hold a special place for new/young members. I believe all of this will foster collaboration, a collegial atmosphere, and an association that will benefit the section, NCFR, and the family field.

Naomi L. Lacy, MA

1) Ph.D. Candidate, Department of Sociology, University of NE-Lincoln. 2) Masters Candidate, Department of Sociology, University of NE-Lincoln. 3) Section membership in Research and

Theory and Feminism and Family Studies. 4) American Sociological Association family section. 5) I am interested in promoting participation of students and new professionals in the section. I believe that participation in section activities allows student/new professionals a chance to develop important mentoring relationships. But beyond simple participation, I am

interested in increasing opportunities for interdisciplinary discussions of both research and theory. I have been impressed at the interdisciplinary nature of the section and the resultant opportunities and believe that increased opportunities to talk with each other would benefit the student/new professional.

House Appropriations Panels

Here are the key House Appropriations Panels in the 105th Congress:

Agriculture and Rural Development

Republicans:

Joe Skeen (NM) Chair
James T. Walsh (NY)
Jay Dickey (AR)
Jack Kingston (GA)
George Nethercutt (WA)
Henry Bonilla (TX)
Tom Latham (IA)

Democrats

Marcy Kaptur (OH) Ranking member
Vic Fazio (CA)
Jose Serrano (NY)
Rosa DeLauro (CT)

Commerce, Justice, State, and the Judiciary

Republicans

Harold Rogers (KY) Chair
Jim Kolbe (AZ)
Charles H. Taylor (NC)
Ralph Regula (OH)
Michael Forbes (NY)
Tom Latham (IA)

Democrats

Alan B. Mollohan (WV) Ranking
David E. Skaggs (CO)
Julian C. Dixon (CA)

Labor-HHS-Education

Republicans

John Edward Porter (IL) Chair
C.W. Bill Young (FL)
Henry Bonilla (TX)
Ernest Jim Istook Jr. (OK)
Dan Miller (FL)
Jay Dickey (AR)
Roger Wicker (MI)
Anne Northup (KY)

Democrats

David R. Obey (MN) Ranking
Louis Stokes (OH)
Steny H. Hoyer (MD)
Nancy Pelosi (CA)
Nita Lowey (NY)
Rosa DeLauro (CT)

VA/HUD/Independent Agencies

Republicans

Jerry Lewis (CA) Chair
Tom DeLay (TX)
James T. Walsh (NY)
David L. Hobson (OH)
Joe Knollenberg (MI)
Rodney Frelinghuysen (NJ)
Mark W. Neumann (WI)
Roger Wicker (MI)

Democrats

Louis Stokes (OH) Ranking
Alan B. Mollohan (WV)
Marcy Kaptur (OH)
Carrie P. Meek (FL)
David E. Price (NC)

**REACH PARENTS THROUGH THE
"Mom & Me -
PREGNANCY TO THREE"
PARENTING SERIES**

Funded by Local
and International
Kiwanis

ORDER TODAY!

Curriculum includes:
Leader's Guide
Participant Book
Support Material

\$75.00/ea.

- ◆ Easy Reader Style - 4th grade reading level.
- ◆ Multi-cultural Illustrations.
- ◆ Development from prenatal to 3 years of age.
- ◆ Self-esteem, daily care, discipline, nutrition, toilet teaching, etc.!
- ◆ Lessons are activity-oriented using a variety of teaching methods.
- ◆ Curriculum is based on a successful parenting series, which has been taught for 4 years.
- ◆ Focus group tested/peer reviewed.

Please send _____ (qty.) of the "Mom & Me - Pregnancy to Three" Parenting Series. Enclosed is a check/money order made out to MSU Extension Kalamazoo County for \$ _____ (\$75.00 ea./postage included).

Send the Curriculum(s) to:
Name: _____
Organization: _____
Address: _____ City: _____
State: _____ Zip: _____ Phone #: _____

Mail completed form & check/money order ONLY to: MSU Extension, 302 County Administration Building, 201 West Kalamazoo Avenue, Kalamazoo MI 49007.

For more information, call: (616) 384-8062.

Open Positions

Cornell University, Child Development Senior Extension Associate:

The Department of Human Development and Family Studies seeks a person knowledgeable about child development, with particular reference to issues of child care and related support for families. The person in this position will plan, implement, and evaluate educational programs for families, and staff development opportunities for agencies concerned with children and families. Program areas include child care, successful development in early and middle childhood, parent education, and/or family resource programming. Qualifications include Ph.D., or Master's and significant experience, strong background in child development and child care issues, and successful experience in program and staff development, training, and technical assistance. Contact: Ms. Juleene Conner, Department of Human Development and Family Studies, NG14 MVR Hall, Cornell University, Ithaca, NY 14853; phone: 607-255-0849; e-mail address: jac6@cornell.edu. **Deadline is April 18, 1997.**

Human Development and Family Studies: The Department of Human Development and Family

Studies of Iowa State University, invites applications for a tenure-track Assistant/Associate Professor position in Diversity in Human Development and Family Studies. This position presents an opportunity to develop and teach undergraduate and graduate course work in a college and department that addresses the diversity and changing nature of American families and children. Support will also be provided to develop a research program in the newly developing Center for Family Policy. Applicants must have a Ph.D., potential for significant research scholarship, and evidence of quality teaching. Applicants must demonstrate expertise, background, and experiences in multi-ethnic and cross cultural aspects of family and children in a diverse society. Credentials could include academic expertise in any of the department program areas: family studies, child development, early childhood education, early childhood special education, life span development, family housing and resource management, or marriage and family therapy. Applications from culturally and linguistically diverse individuals are encouraged. Applications will be accepted until the position is filled. **Review of applications will begin March 17, 1997, and the position will be available August 16, 1997.** To insure full consideration submit letter of application, curriculum vita, samples of scholarly work, and a least three letters of recommendation to Dr. Mary Jane Brotherson, 1086 LeBaron, Department of Human Development and Family Studies, Iowa State University, Ames, IA, 50011-1120. Phone: 515-294-8275; E-mail: mjbrot@iastate.edu; FAX 515-294-2502. Equal Opportunity and Affirmative Action Employer.

Family Studies and Community Studies: Assistant Professor, Research, Teaching, and Outreach, full-

time, nine-month, position available August 1997, the University of Illinois at Urbana-Champaign. Ph.D. in family or community studies, anthropology, sociology, psychology, or related field. Expertise in U.S. families required. Possible areas of research include: families and community, ethnic/racial minorities, and family or marital dynamics. Minority candidates are especially encouraged to apply. To receive full consideration, application must be received by February 28, 1997. Send letter of application, including a statement about teaching, research, and outreach interests, vitae, and three letters of recommendation to: HCD Business Office-Search #5378, attn: S. Salamon, 905 S. Goodwin Ave., Urbana, IL 61801. Contact: Sonya Salamon, 217-333-3829; E-mail: ssalamon@uiuc.edu. The UI is an AA/EOE.

Assistant Professor: The Illinois School of Professional

Psychology/Chicago campus seeks an assistant professor with experience and training in family/marital/couples therapy in cross-cultural settings. Faculty position requires excellent teaching and supervisory skills, and a minimum of two years of post-doctoral clinical and teaching and/or supervisory experience relevant to above areas. Faculty are expected to teach and advise Master's and Doctoral students, lead small therapy seminar groups, and supervise final doctoral research projects. Position to begin September 1, 1997. Submit cover letter addressing areas of strength, resume, and three letters of reference to Marc Lubin, Ph.D., Dean, Illinois School of Professional Psychology/Chicago Campus, 20 S. Clark St., Third Floor, Chicago, IL 60603. The School is an Equal Opportunity Employer. Women and applicants from diverse cultural backgrounds are encouraged to apply. **Deadline for applications: April 30, 1997.**

Are You Publishing A Book in 1997?

Would you like to tap purchasers of 500,000 textbooks annually?

Advertise in NCFR publications, and reach the family marketplace that will sell your books!

Contact Brenda:
toll free 888-781-9331
ext. 18.

In Memoriam

Social anthropologist, **Robert Norman Rapoport**, a member of NCFR since 1976, died November 4, 1996, in Hampstead, England. He was 72 years old.

He was born on November 1, 1924, in Brockton, MA, and educated at the Public Latin School in Boston, earned a master's in social anthropology from the University of Chicago, and a doctorate at the Dept. of Social Relations at Harvard. He served as lieutenant with the OSS in China during World War II before attending college.



Rapoport

His first academic post was at Cornell University as an assistant professor of sociology and anthropology. He also held posts at Harvard, Boston College and North-eastern. He then moved to England to become research director in the Social Rehabilitation Unit at Belmont Hospital in Surrey in 1954. He spent the 1960s working in both England and the U.S., and became the senior social scientist at the Tavistock Institute between 1965 and 1973.

Dr. Rapoport's anthropology began with a study of the Navaho Indians.

He and his wife, Rhona Sofer Rapoport, were co-founders and co-directors of the Institute of Family and Environmental Research. They began to concentrate on the study of the family,

and pioneered that study in Britain.

Their book, *Dual-Career Families*, became a classic volume on husbands, and work. Also among the port titles are *Community as* or: *New Perspectives on a* erapeutic Community; *Working* couples, *Women and Top Jobs: The* Next Move, and *Sex, Career and* Family.

Rapoport also published books on the role of the family and the community in bringing up children. In the 1980s, he returned to the field of mental health in New York, helping to develop innovative work in children's difficulties.

While a visiting professor at Surrey University, he resumed research into the issue of values.

Rapoport also was interested in the impact of globalization and the need to prepare children to survive in an increasingly chaotic world. He organized an international symposium in Budapest in 1994 and was nearing completion of a book entitled *Families as Educators for Global Citizenship* when he died.

During a paper presentation at the Budapest symposium, a participant termed Rapoport's keynote as a "profoundly political document." This was Rapoport's reaction: "As I have always thought of myself as relatively apolitical, in a vaguely liberal way of many social scientists, this came as a surprise with a bit of distress mixed with a large amount of pleasure: After reflection I felt pleased that I was able to overcome my natural trained-in neutrality and take a stand on something important. It was a mark of maturity."

Survivors include his wife, Rhona, a daughter, Lorna; a son, Al, and two grandchildren, Tayo and Iola.

Council from Page 28

round tables, and poster sessions followed.

SCFR's highest award, the Distinguished Service to Families Award, was presented to Dr. Sharon Price, College of Family and Consumer Sciences, the University of GA. Some of her accomplishments include: NCFR presidency, AAMFT supervisor, NCFR Osborne Teaching Award, editorial boards of seven journals, and author of more than 50 articles, book chapters, and books.

Outgoing SCFR president Dr. Don Bower of the University of GA presented the gavel to incoming president Dr. Denise Donnelly of GA State University. **Don Bower**
SCFR Past President

NORTHWEST

New officers in the Northwest Council on Family Relations are: Gretchen Zunkel, University of WA, president; Linda Ladd, Cooperative Extension, Washington County, OR, secretary/treasurer; and Marilyn Flick, North Eugene High School, Eugene, OR, Membership/Public Relations. **Jim White**
NWCFR Past President
604-822-4683

Berry College

SCHOOL OF EDUCATION AND HUMAN SCIENCES

FAMILY AND CONSUMER SCIENCES ASSISTANT PROFESSOR

BERRY COLLEGE, located on 28,000 acres in the scenic northwest Georgia mountains next to Rome, Ga., is an independent, coeducational college with approximately 2,000 undergraduate and graduate students and a comprehensive curriculum that stresses academic excellence, practical work experience, and an interdenominational religion-in-life program. Bachelor of science, bachelor of arts, bachelor of music, master of business administration, master of education, and education specialist degrees are offered at Berry. Rome is located midway between Atlanta, Ga., and Chattanooga, Tenn.

POSITION: Family and Consumer Sciences Assistant Professor (tenure track position).

QUALIFICATIONS: Doctorate in child and family development (family sciences) preferred. Preference given to those with demonstrated excellence in undergraduate teaching.

RESPONSIBILITIES: The successful candidate will teach undergraduate courses in child and family development, family life education, and family services. Scholarly publications expected.

SALARY: Competitive, contingent on qualifications and experience.

THE PROGRAM: Family and Consumer Sciences.

APPOINTMENT DATE: August 1997.

APPLICATION DEADLINE: Applications will be accepted until the position is filled.

APPLICATION PROCEDURE: Send letter of application, vitae, three letters of reference, and all transcripts to:

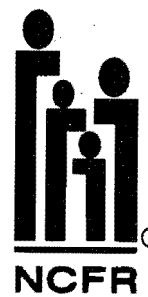
Dr. David L. Pollock, Coordinator
Family and Consumer Sciences
P.O. Box 495011
Mount Berry, Georgia 30149-5011

Equal Opportunity Employer

Association of Councils of the National Council on Family Relations

Affiliate

Connection



September 1996

Volume 4, No. 3

Dreaming and Planning

"Some people dream; others plan."

Dreaming prepares us to plan. After dreaming about the Association of Councils (AC), we have begun the process of planning --for the next conference and the next few years. I say "years" because our goals encompass a great number of items, and they will not all be accomplished in one year. However, we must have a plan and begin to work on it.



Stanberry

Libby Blume, past AC president and chair of the Task Force on the Association of Councils, has taken the myriad comments and concerns from task force members and put together a list of recommendations which will now be studied. The final recommendations will be explained in my next column.

Thanks to task force members Edith A. Lewis, Judy Rommel, Kathy Collins Royce, Roger Rubin, John Toulaitos, and James M. White who gave such thoughtful comments to Libby and to Libby who did a masterful job of making sense of what all the members had to say. The AC will be following up on recommendations made by the task force.

The AC by-laws say that the AC will provide elected representatives of the Affiliate Councils with a forum and mechanism for exchanging ideas and experiences and seek concrete methods to strengthen marriage and family relationships through our association with NCFR.

Specifically, we work to directly involve the members of local, state, and regional councils in the planning and implementation of educational research and clinical and action-oriented programs directed toward marital and family relationships.

Our plan is to continue publishing news from affiliates in the Affiliate Connection, ably edited by Jim Ponzetti, president-elect, who has great ideas for the publication. We will include summaries of taped sessions at the Kansas City annual conference in the column, "Taking the Conference Home," that Judith Myers-Walls began last year. Indeed, this was a good idea that deserves continuation. We are working on having a more visible section on NCFR's website.

At the 1996 conference in Kansas City, participants at the Leadership Training session shared wonderful ideas in response to Affiliate presidents' concerns. Distribution of the responses is in process.

At the 1997 conference to be held in Washington, DC, we will sponsor a Leadership Training session and business meeting as well as co-sponsor the pre-conference session, "On the Hill," with the Public Policy committee and the Family Policy Section.

We are sponsoring or co-sponsoring a number of sessions at the 1997 conference. Program chair Carolyn Henry will report to you her plans. Fourteen AC proposals were received for the conference. In addition, we are thinking ahead to the 1998 conference that Judith Myers-Walls is planning.

The AC executive committee is concerned about communication--between and among the executive committee members, Affiliate leaders, NCFR staff, and NCFR Board of Directors. We are exploring ways to facilitate communication.

We also are putting into place a structure for organizing/re-activating Affiliate groups. New York, California, and Maryland have expressed interest in become active, and we must provide support to these and any other groups who wish to be more active.

Another idea that we are contemplating is setting up regional coalitions of Affiliates. At the meeting in Kansas City, much discussion centered around distance and communication and how some of us are closer to other Affiliates' meetings than our own. We will take action on this idea.

The AC goals and objectives are in place. Our action plan is in process. We are dreaming, but as some of my friends like to say, "we're putting some feet to our dreams!"

Anne M. Stanberry Ph.D. CFLE
President, Association of Councils

Meeting

June 30 - July 3, 1997: Adult Faith Resources conference, "Mapping Adult Faith Journeys," Franciscan Renewal Center, Phoenix, AZ. Contact: Adult Faith Resources, 9709 Rich Road, Minneapolis, MN 55437-2025; (612) 835-1579.

After the Conference

Notes on Three Sessions

Often, the notion of "taking the NCFR conference home," implies acquisition of and eventual integration of the immense amount of data generated from the annual conference. Why not? Researchers and practitioners share their work in so many ways that are potentially relevant to our work "back home." Later I will mention some of them.

For me, there is an additional, but more elusive and less definable element of NCFR's annual conference that provides instruction, courage, and motivation for my daily work. This element is the stories of people that were shared with me--the disappointments, the successes, the strengths, the ambitions--and a thousand other things too often considered "unimportant" or "unrelated" to major issues. I propose that our mutual stories are the soul of NCFR, and they are important.

For next year, pick a spot for coffee and conversation and listen. That may be an important hour as you face the later challenges of your own life and work.

Here is some information on three presentations that were made in Kansas City (they are available on videotape; contact NCFR headquarters toll free at 888-781-9331 for ordering information):

Mobilizing for Family Health: Let's Do It Together, John Rolland, MD; Darryl Ross Goetz; Barbara Holder; and others.

The panels of parents, who have experienced a family member's health problems, and family professionals joined with Dr. Rolland and seminar participants in giving a holistic picture of the need for families, family professionals, and health care professionals to work as equal partners in a collaborative process. Suggestions for building collaboration with families were given. To be effective influencing policies, NCFR must become a three-tier organization with a strong grassroots level. Reviewers suggest this videotape could be useful for those thinking about health care issues, family systems, and policymaking.

Intimate and Interpersonal Violence, Richard Gelles.

In the Research Update for Practitioners (RUPS) presentation, Dr. Gelles indicated that even as large a

problem as family violence is, there is still a low base rate for family violence behaviors. This is an asset because if a social problems seems too big, too overwhelming, policymaking can become paralyzed. Gelles said risk and protective factors that are identified through research are entry points for practitioners. He suggested stages of change that range from precontemplation to maintenance. Intervention in family violence cases depends on the family's conditions; there are no simple answers, but interventions can be effective if used appropriately. Review suggest this presentation would be helpful for both family violence content and public policy work.

Secrecy and Truth-telling with Harri Lerner. (Audiotape only available.)

Truth-telling is multi-faceted; telling the truth is not always best. Rather than being products of our context, we shape our context. Therefore, Lerner's main point was the need to create an emotional climate so that family members can listen to each other. Maturity, Lerner suggested, is talking to people rather than talking about them. The skill involved with truth-telling is knowing how and when to tell what to whom. While anxiety and reactivity are contagious, so is calmness. She suggested that we must think clearly and objectively, keeping a calm presence in a highly emotional situation. Timing and tact make truth-telling possible. Reviewers suggest this presentation is useful for Affiliates or other groups to hear and discuss the many issues involved in truth-telling and secrecy.

J. Phillip Stanberry Ph.D. CFLE

???

Does your Affiliate have news and photographs to share in the Affiliate Connection? Do you have a Council newsletter

Send them to Kathy Collins Royce, Association of Councils liaison, at NCFR, 3989 Central Ave. NE, Suite 550, Minneapolis, MN 55421; toll free 888-781-9331; FAX 612-781-9348; KCROYCE@ncfr.com.

Affiliate Connection

From the Experts Become Active Politically

Lane Powell of Alabama said at the Association of Councils Leadership Training Session in Kansas City that we can't have an influence on public policy without being politically active.

Who else, she suggested, is more capable of shaping family policy than those of us who work with families and do research with families?

A study conducted by the Kettering Foundation suggested that policymakers think public input is important, but they do not seek it out. The study also found that the input legislators want varies, and that media coverage is often inaccurate.

NCFR Executive Director Mary Jo Czaplewski reported that speakers at a COSSA meeting reinforced the idea that we have 96 freshmen congresspersons who are focused on pleasing their state and local constituents and balancing the budget by 2002.

The speakers suggested that many of these representatives know very little about Washington or social science research on families. Therefore, it is up to us, the grassroots tier of NCFR, to educate our representatives with good research-based information to help in the policymaking process. Staff members of Congresspersons are the "20-something crowd," and how we deliver our message will make a difference.

So, as members of the Association of Councils and the umbrella organization, NCFR, where are we? What is our charge?

We must become politically active. We must share our information, based on sound research, with our legislators. We must build a supportive political climate.

Does your Affiliate group have a public policy chair? Have you divided your Affiliate membership into Congressional districts so that you know who needs to contact which legislator? Do you have a telephone tree or listserv e-mail group for dissemination of public policy information? Have you formed a coalition of organizations in your area who have similar goals? Have you written your governor to volunteer to be on a task force or committee dealing with family issues? Are you participating at the local level as states and counties plan and implement welfare reform and other policies that have implications for families? Do you take every opportunity for media coverage—to slip in sound knowledge with people on the street's reaction to, for example, the snacking doll that eats children's hair?

Are you making plans to join your colleagues at NCFR at the pre-conference session, "On the Hill"?

It is through our leadership at the Affiliate level that we can promote family well-being and the implementation of family sensitive policies. Let us use our expertise to shape family policy. Let us become more politically active.
Anne M. Stanberry Ph.D. CFLE
President, Association of Councils

Send Your Nominations for "Caring for Families"

This is the first issue of the Affiliate Connection since I was elected president-elect for the Association of Councils (AC) last fall. I must admit it snuck up on me! Although I previously served as president of both a state and a regional affiliate, the transition to leadership at the national level has been a humbling experience.

Ponzetti I have had the good fortune of being surrounded by helpful, experienced colleagues who realize the extent of time necessary to promote the Association of Councils. They have already encouraged and consoled my feelings of being overwhelmed, and this is just the first issue!

I want to thank some colleagues that are especially supportive of my efforts and activities as president-elect. Kathy Collins Royce at NCFR headquarters is invaluable to the Association of Councils in ways so many of us take for granted. Thank you, Kathy, for your hard work and cheerful disposition.

Anne Stanberry, current AC president, is another hard worker and great thinker. I already realize she will be a hard act to follow.

Libby Blume, past AC president, has charted the future course of the Association through her stellar leadership of the Task Force for the Future of the Association of Councils convened by Michael Sporkowski. Thank you, Libby.

I hope Anne and I can bring many of the recommendations put forth by you and the Task Force to fruition in the months ahead. I also want to thank John Toulitos who has done so much over the years for the Association. He was instrumental in my writing this column because he is the one who encouraged me to run for office. A better friend and mentor are rare. Thank you, John. I hope I contribute the same energy and enthusiasm you have for the Association.

Finally, I must recognize all the members of various regional, state, local, and student councils who persistently promote NCFR across the country and beyond. Thank you!

During the Leadership Training session sponsored by AC at the beginning of the annual conference in Kansas City, I had the opportunity to converse with many individuals about the direction of AC. In talking about the focus, I was particularly attracted to a phrase that went like this: "The Association of Councils—Caring for those who care about families."

I plan to use that phrase as a theme for the Association to recognize and plan to profile a person or organization that is caring for families in some special way in each Affiliate Connection. However, in order for this to work, I need your suggestions or nominations of people or

organizations to profile. I know they are out there. I just need you to let me know who they are so that we can recognize their efforts on behalf of families.

I also encourage all affiliate councils to continue to share news of your particular group by sending a short note or photographs or your newsletter to me or to Kathy Royce (FAX 612-781-9348) at headquarters. With your help, the Affiliate Connection will remain an important way for us to stay in touch and support one another during the year.

Jim Ponzetti
President-elect, Association of Councils

UW - MADISON

After several organizational meetings in Spring, 1995, the **University of WI-Madison Council on Family Relations** marked its official "kick-off" during the 1995-96 academic year.

Beginning in September, 1995, the group met on a regular basis through May, 1996. Membership has grown from 13 to 56 paid members.

Officers are: Patricia Herman, president; Susanne Barry, vice-president; Kristen Draper Linney, secretary; James Lambert, information specialist; and Michele Obremski, publicity chair.

The focus of last year's activities was to publicize the group and recruit new members while also establishing an ongoing program of professional development for members. Most meetings included a professional development component consisting of presentations by members and invited guests on topics of interest to the members.

Topics included: What To Do With a Child and Family Studies Degree; Accessing Family Professional Resources on the Internet; Tips for Presenting and Getting the Most Out of NCFR Conferences; Ethics and Sensitivity in Working With Families; The Role of Volunteer Experiences in Professional Development; and Preparing for the GRE. Professional development was also supported through members sharing information about events and opportunities related to working with families.

In addition, the Council participated in an outreach activity, supporting a "Family Fun Night," sponsored by the South Madison Community Center. Council members worked with organizers to provide activities for children and their parents. The event was well-attended and enjoyed by the families and the Council participants.

Persons interested in more information about the Council may contact Patricia Herman at 608-262-6752; herman@students.wisc.edu or James Lambert at 608-265-8224; jlambert@ssc.wisc.edu.
James Lambert

Affiliates Urged to Help Launch "I Am Your Child" Campaign

Affiliates at the state, local, and regional levels are encouraged to join NCFR in the launching of a three-year campaign to raise national attention to the importance of the role of families and communities in order to ensure their children's healthy growth to adulthood. (See related article on Page 8.)

Each state has a lead organization to bring together the various groups concerned with children and family issues. It is imperative that NCFR affiliates lend their family perspective to what could be construed as an early childhood or child care campaign.

You may find out more about this campaign which will be publicly launched April 16. On April 28, a special ABC documentary, "I Am Your Child," hosted by Tom Hanks. It is scheduled to be aired at 8 p.m. (Check your local listings for the time in your area.)

Key in to the new website established by the Families and Work Institute of New York, the lead national organization with whom NCFR is collaborating: <http://www.iamyourchild.org> to get the latest breaking news. If you don't have computer access, contact Amy Farber at 212-465-0244 ext. 221.

This is a three-year effort to change the way America thinks about its children and to make changes that will propel us into the 21st century with new ways of nurturing them to ensure their optimal growth and development into adulthood.
Mary Jo Czaplewski Ph.D. CFLE
NCFR Executive Director

BRITISH COLUMBIA

International Family Day activities are being planned by the **British Columbia Council for the Family**. The observance will be made on May 15.

"Connect with Kindness" is the theme, and the Council is asking people to connect with at least one family member that day. Suggestions for "connections" include telephone calls, lunch, dinner, an E-mail, a visit, taking a walk together, doing a chore or task, or leaving an answering machine message.

Family members are asked to call and register their "connection" with the Council, and be eligible to win prizes.

BC Council also will promote activities for Intergenerational Week, May 18 to 24 in the province. The observation was started in the U.S. in 1991.

The special week is promoted year round through a news bulletin highlighting intergenerational activities in the province, development of a kit of resources for organizations, a poster, bookmark, buttons, and balloons.
Carol Matusicky
BC Council Executive Director
604-660-0675

Affiliate Connection

ALABAMA

Alabama Council on Family Relations is involved in several state projects.

A child nutrition focus group was co-sponsored in September by ACFR and the Birmingham District Dietetic Association to discuss possible impact of the welfare reform bill on child nutrition in Alabama.

The concern for basic needs of young children and their parents resulted in a letter from the ACFR Board to Governor James, urging that he appoint a special task force of professionals in child and family sciences (such as ACFR members) to review the impact of the projected changes in welfare stipulations and to develop new plans and resources for dealing creatively with family needs.

Board members also arranged a meeting Rep. Jim Carns and Birmingham Senator Jabbo Waggoner.

Dept. of Human Resources Assistant Commissioner Greg Hoyt gave a long response to the ACFR letter, in which he concluded, "The Personal Responsibility and Work Opportunity Reconciliation Act of 1996 requires states to conduct an extensive public review process and public hearings. We feel this requirement, which we fully support, will provide sufficient public input."

ACFR members disagree.

The affiliate also will hold its annual meeting in March in Birmingham. The breakfast meeting and program on public policy advocacy is set for 7:45 to 9 a.m. on Friday, March 14, during the annual state meeting of the AL Association of Family and Consumer Sciences.

ACFR President Lane Powell will share her presentation from the NCFR Leadership Training AC session and will discuss what ACFR can do to advocate for children and families in AL.

The ACFR Executive Board has decided to develop a resource-sharing emphasis among their members by creating a website directory.

Members who wish to participate are asked to fill out an information questionnaire that would let others know their specialties and interests. If they take referrals in counseling, are willing to serve as a resource person or program consultant, or want to be available for E-mail conversations, the website will provide the linkage.

Persons wishing to become part of the Resource Directory are invited to join ACFR. A new brochure will highlight this membership benefit.

Lane Powell
ACFR President
205-870-2843

ILLINOIS

The **Illinois Council on Family Relations** invites you to their 1997 annual conference on "Families and Service Providers: Partners for the Journey."

The event will be held April 18 and 19 at Robert Allerton Park in Monticello,

IL, just outside Champaign-Urbana.

Conference fees are \$73 for the full conference, plus very reasonable lodging (highest rate is \$48 for a single). For additional information contact Dr. Jeanne Snyder, Northern IL University, Gilbert Hall, DeKalb, IL 60135; 815-753-1543.

Both professional and student member involvement is encouraged in the ICFR. Students are invited to present seminars and/or poster sessions at the conference. The conference is an excellent networking opportunity for everyone.

Members are working on establishing a home page and a student chat room via E-mail to help students interact from campus to campus.

Students and professionals serve on the Board and interact throughout the year.

Nancy L. Gartner
ICFR President
815-223-2540

INDIANA

The Indiana Consortium of Family Organizations (COFO) is one of the groups in which the **Indiana Council on Family Relations** participates.

Two more organizations have joined recently: the Center for Families at Purdue University and the Institute for Family and Social Responsibility at Indiana University. They join ICFR, the IN Association for Marriage and Family Therapy, Family Services Council of IN, and the IN Association of Family and Consumer Sciences.

COFO is considering the initiation of Family Impact Seminars or briefings for legislators around family issues.

Shelley MacDermid
ICFR President
765-494-6026

MINNESOTA

Minnesota Council on Family Relations will hold its spring conference April 18 in Roseville. The Intergenerational Dialogue is on welfare reform in Minnesota--"Whose Families?? Whose Children?? How Do We Do It??"

The goal of the Dialogue is to examine the new welfare policies in Minnesota and how the state's families and communities can deal with the significant changes. This will be looked at from an intergenerational perspective from a diverse group of Minnesotans representing five generations.

Facilitating the activity is its creator, Dr. James Gambone. He has conducted 27 Dialogues over the past four years and is the author of **Together for Tomorrow: Building Community Through Intergenerational Dialogue**.

Each generation has its own perspective on what is happening, but we typically assume that we share similar views. When we listen to different generations, we find the assumptions which have guided us may be very different from older, younger and much younger generations. After we have listened to different generations respectfully, we will work together to

develop creative alternatives to changing legislation and welfare reform.

Registration and continental breakfast begins at 8:15 a.m. The Dialogue starts promptly at 9 a.m. and ends at 3:45 p.m. Sue Harrington, Lois Yellowthunder, and Mary Jo Czaplewski co-chair the planning committee. Additional committee members include Sue Stoner and Sue Meyers.

MCFR hosted a very successful fall conference on "Families: Understanding and Nurturing Their Spiritual Health," in December. Almost 300 persons participated.

Dr. Richard Fowler gave the keynote address, "Spiritual Development in the Family." He used insights from developmental psychology to help participants understand how individuals and families construct their views of spirituality throughout the lifespan. Using a framework derived from Buddhist, Native American, Jewish, and Christian traditions, Dr. Fowler explained how the spiritual themes of centering, compassion, peace of mind, health, and gratitude are woven into the developmental levels of family life.

Conference participants were enthusiastic in their evaluations of the keynote and their choices among the 21 afternoon breakout sessions.

The conference committee included Mary Kay Ashley, Ted Bowman, Bob Brancale, Dawn Cassidy, Sue Chafee, Joan Comeau, Dianne Millis, Ron Pitzer, Kurt Wical, and co-chairs Christa Treichel and Lowell Johnson.
Lowell Johnson
MCFR President
612-653-3115

OHIO

Evaluations have been tabulated for the Fall 1996 tenth annual Conference on the Family jointly sponsored by **Ohio Council on Family Relations**, the OH Division of the American Association for Marriage and Family Therapy, OH Association for Family-based Services, and OH Section of the American Association of Sex Educators, Counselors, and Therapists.

Theme of the meeting was "Relations Between Adolescents and Parents." The evaluations cited the conference as the "best yet."

Keynote speakers were Dr. Steven Gavazzi, assistant professor, and Dr. Barbara Newman, professor, of Family Relations and Human Development, College of Human Ecology, The OH State University.

Gavazzi addressed "Prevention and Intervention Strategies with Adolescents and Their Families," and Newman spoke on "Parent-Adolescent Interaction: Research Update." Twelve concurrent sessions and seven poster presentations were resourced by professionals from across the state.

The OCFR will elect new officers in March. Ballots will be distributed in the March state newsletter. Also featured in the issue will be computer resources for professionals, current professional inservices in OH, officer update,

university/college update, and research updates.

Ann K. Smith
OCFR President
614-454-0144

PA/DE

The Board of the **Pennsylvania/Delaware Council on Family Relations** is again in the midst of planning an annual conference. The theme for 1997 is "Healthy Families: A Challenge for the Year 2000."

The event is set for Saturday, September 27 on the Messiah College campus in Grantham, PA. Dr. Pauline Boss, professor in the Family and Social Science Dept. at the University of MN, and current NCFR president, and Dr. Barbara Settles, professor in the Dept. of Human Development and Family Studies, University of DE, will keynote.

Currently the Council is seeking additional persons interested in contributing to the program through workshops or roundtables. Submit a short proposal by April 30 to Raeann R. Hamon, Behavioral Science Dept., Messiah College, Grantham, PA 17027

The Nominating Committee, chaired by Dr. Cynthia Drenovsky of Shippensburg University, is seeking candidates for president, vice-president, secretary, and treasurer. Persons may nominate themselves or others by contacting her at the Dept. of Sociology/Anthropology, Shippensburg University, Shippensburg, PA 17257; 717-532-5646; E-mail: ckdren@ark.ship.edu.

Since NCFR's 1997 annual conference is in Crystal City, VA, the PA/DE Council plans to have strong participation. Members intend to coordinate a time when all state members can dine together. Watch for more information in the state newsletter.

Raeann R. Hamon
P/DCFR President
771-766-2511 ext. 2850

SOUTHEASTERN

Southeastern Council on Family Relations held its annual conference February 28-March 1 at the University NC-Chapel Hill campus. The theme was "Toward a More Caring Society: Families as the Source of Strong Leaders and Communities."

Co-sponsors were the **Family Council of North Carolina**, an NCFR affiliate; and the Jordan Institute for Families.

Dr. Don Draayer of Search Institute in Minneapolis, MN, provided the opening plenary session, discussing Search's research on developing assets for stronger communities. Dr. William Damon of Brown University delivered the second general address on research concerning the family's contribution to the moral development of individuals and communities. Respondent panels to both presenters led lively discussions that included all attendees.

Concurrent sessions of papers,

see Council on Page